

New Braunfels

Independent School District

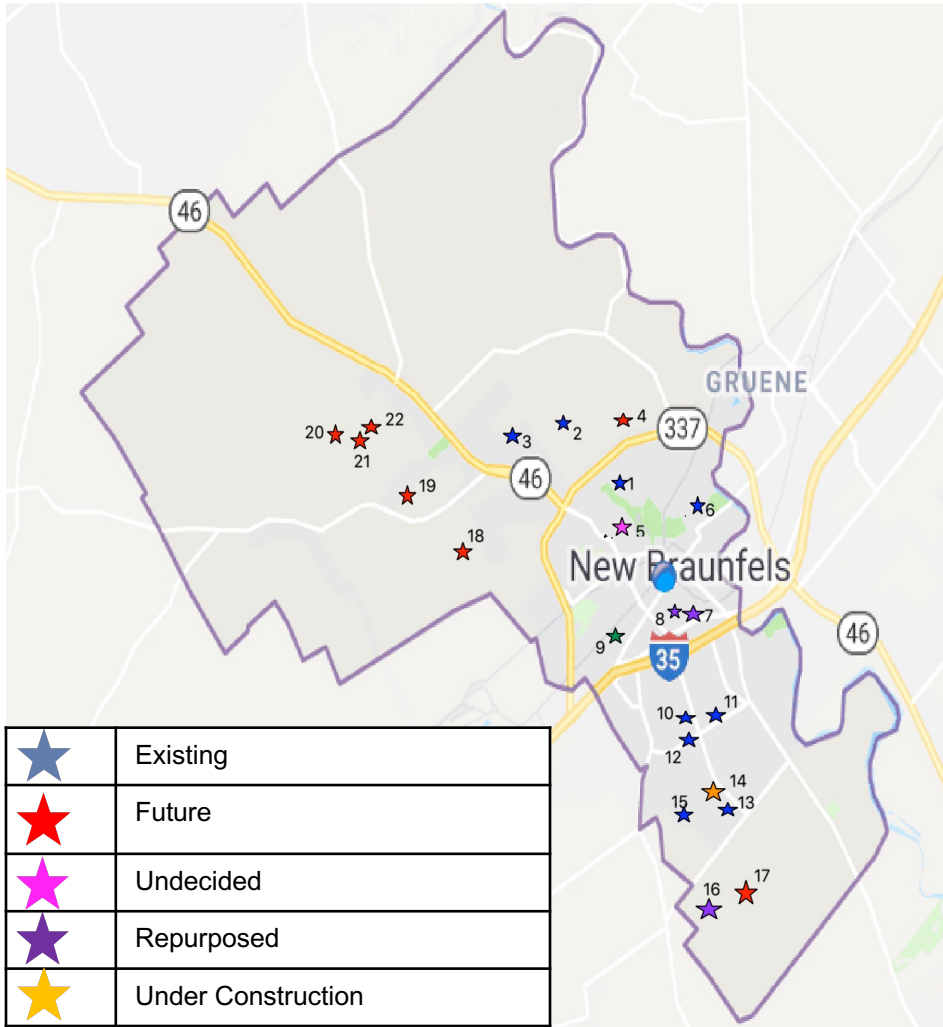
Bond Planning (2021)






NBISD Facilities

Potential Projects

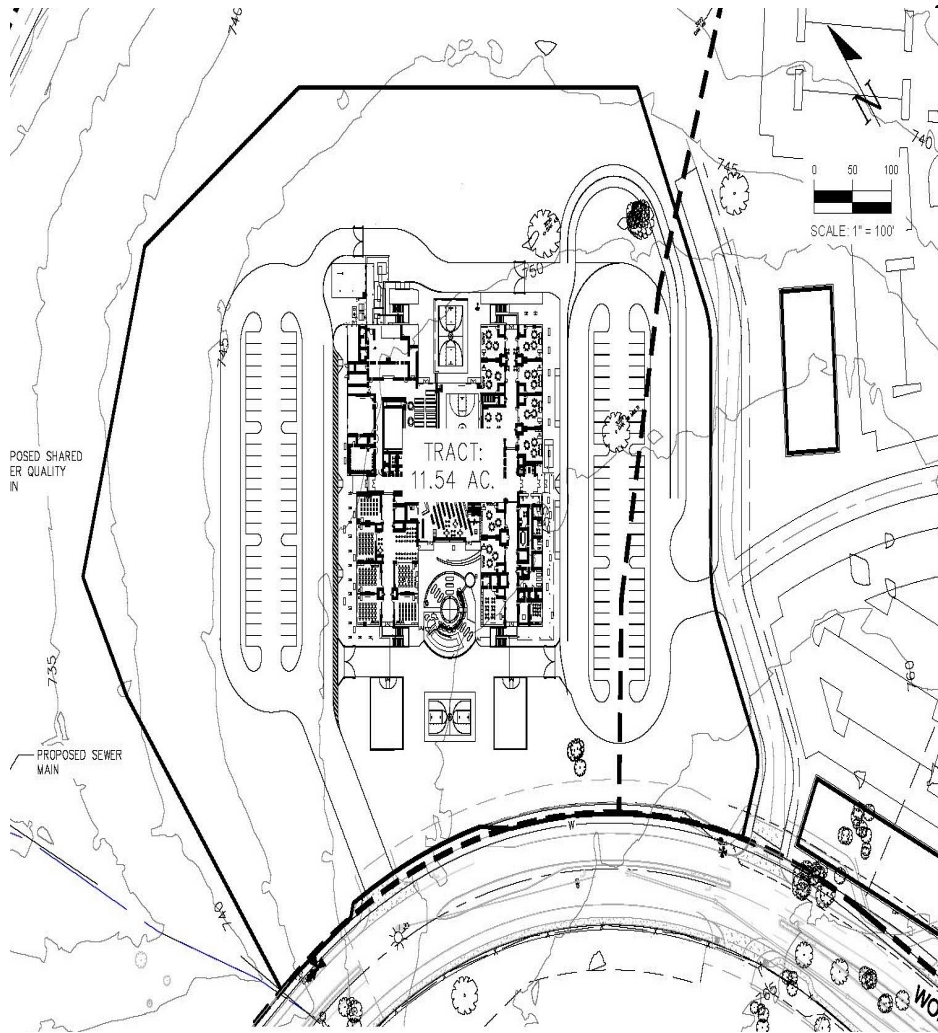
June 2, 2021





	Existing
	Future
	Undecided
	Repurposed
	Under Construction

- 1 - New Braunfels High School
- 2 - Veramendi Elementary
- 3 - Oak Run Middle School
- 4 - Future Elementary School (Veramendi)
- 5 - Seele Elementary
- 6 - Lamar Elementary
- 7 - NBHS Ninth Grade Center (Future Elementary)
- 8 - Carl Schurz Elementary
- 9 - Lone Star Early Childhood Center
- 10 - Walnut Springs Elementary
- 11 - Memorial Elementary
- 12 - County Line Elementary
- 13 - Klein Road Elementary
- 14 - Future New Braunfels Middle School
- 15 - Voss Farms Elementary
- 16 - New Braunfels Middle School (Future 9th Grade/HS)
- 17 - Future Elementary School (Legend Pond)
- 18 - Future Elementary School (WestPointe Drive)
- 19 - Future Elementary School (Mission Valley Road)
- 20 - Future Elementary School (Brandt)
- 21 - Future (3rd) Middle School (Brandt)
- 22 - Future (3rd) High School (Brandt)

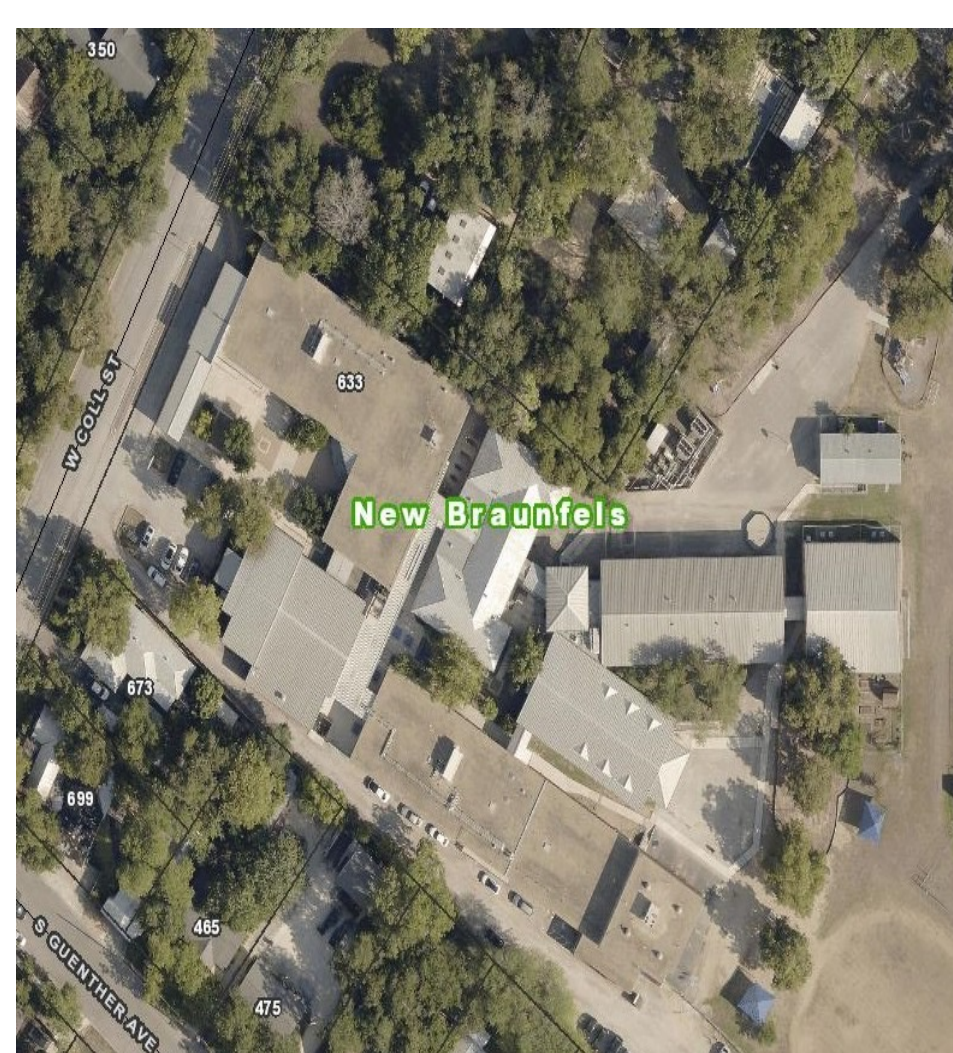


NBISD Property (#4)

Future Elementary School (Veramendi II)

Acres: 11.5 acres total (Note: This campus will have off site detention and water quality ponds.)

Anticipated Long Term Use: Second Veramendi Elementary School (900 student, two-story). Potentially replace Lamar Elementary School by the 2027-28 school year. Attendance zone will be the same as the current Lamar School.



Carl Schurz Elementary

633 W Coll St, New Braunfels, TX 78130

Total Square Footage: 59,989 sq'

Acres: 7.5 acres total

Building:

1935 (original) - 6,595 sq'

1950 (classroom addition-G wing) - 6,500 sq'

1962 (café addition) - 5,100 sq'

1979 (B, D office, gym additions) - 27,061 sq'

1990 (4 classroom addition) - 5,169 sq'

2004 (library/stage additions) - 8,124 sq'

1988 (portable) - 1,440 sq'

2018 Bond Projects:

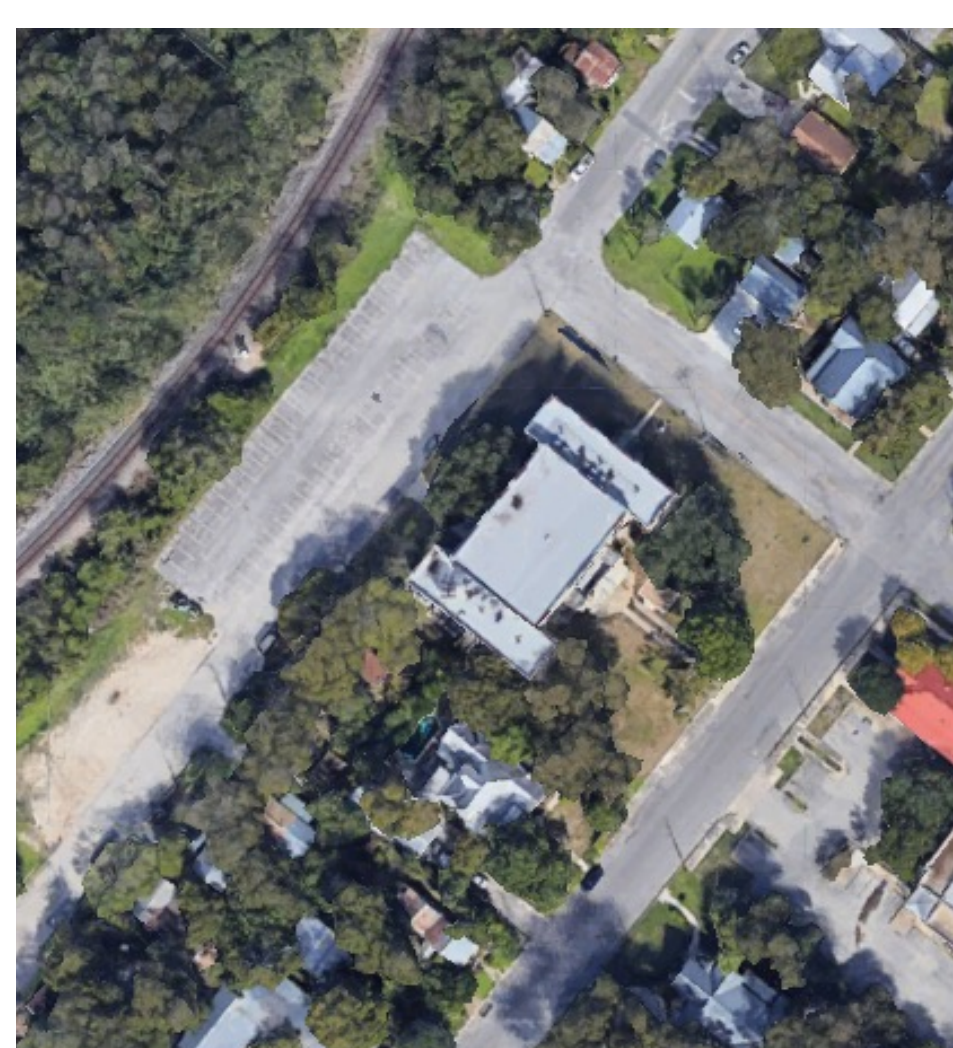
Completed: Security upgrades

Current Use: K-5 Elementary Campus

(Will be replaced in 2023-24 school year by new 900 occupancy elementary school to be built on the current 9th Grade Center site)

Anticipated Long Term Use: Repurposed for SOC/DAEP/Gateway programs

Building Issues: Age (general), structural issues in the 1935 section.



Education Center

430 W Mill St, New Braunfels, TX 78130

Academy Street Gym

EC Annex (old tax office)

Acres: 1.7 acres total

Buildings:

1913 (Education Building) - 29,579 sq'

1936 (Academy Street Gym) – 9,399 sq'

1900 (EC Annex) - 2,040 sq'

Current Uses:

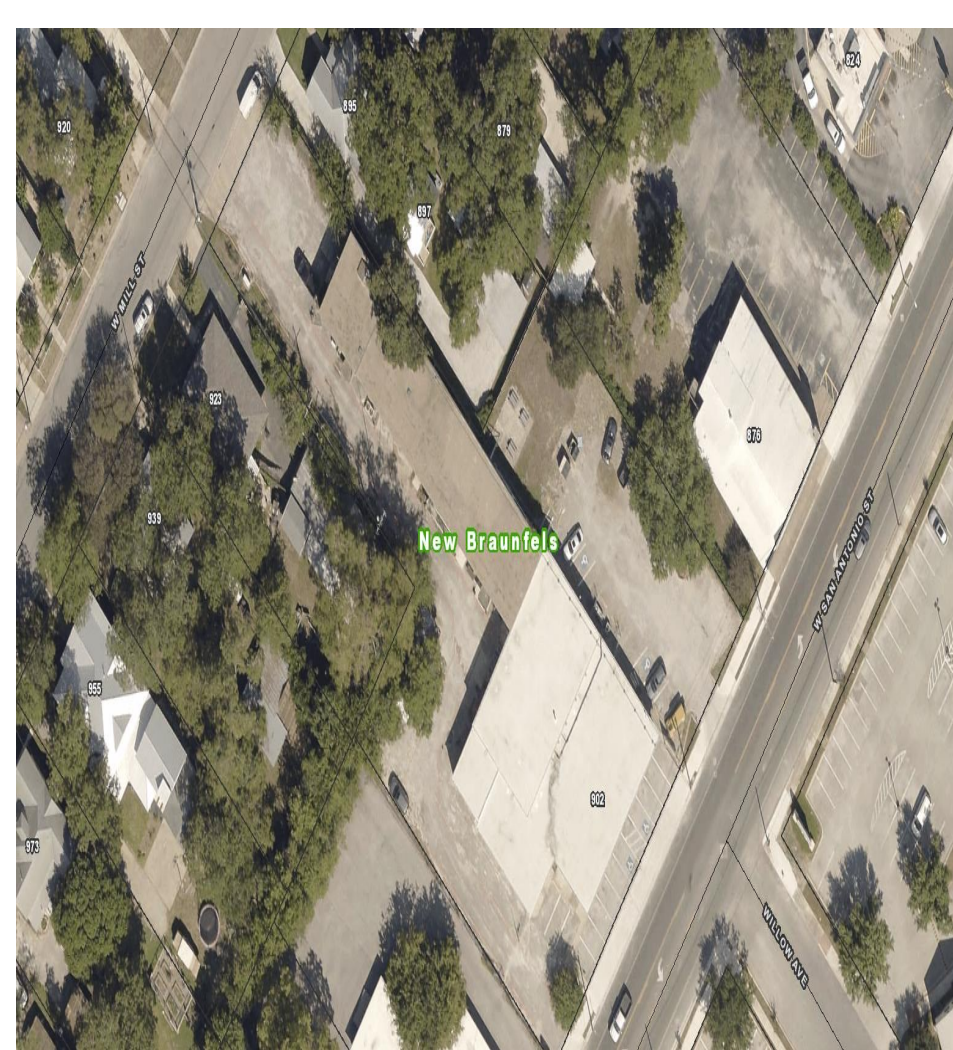
Education Building: Staff training, overflow meeting area, basement used to house district network equipment.

Academy Street Gym: Hourly rental, overflow student functions (HS/MS).

EC Annex: Stores items used for homeless and other at risk students.

Anticipated Long Term Use: None

Building Issues: Age (general), historical, parking, some structural concerns with the ED Center



NBISD Learning Center

902 W San Antonio St, New Braunfels, TX 78130

Total Square Footage: 15,300 sq'

Acres: .5 acres total

Building:

Originally a retail building - 15,300 sq'
1994 (Acquired by NBISD)

Current Use: DAEP and Gateway programs.

(Also is the primary hub for the NBISD/NBU fiber Wide Area Network)

Anticipated Long Term Use: Discussions regarding demolition of the existing structure and building a new district network operations center (MDF with staff offices).

Anticipated Short Term Use: Continue to house DAEP, Gateway program, and network equipment until they can be relocated (at least 2023).

Building Issues: Major structural issues (tilt wall).

Questions