

New Braunfels ISD

PLANNING FOR THE FUTURE

NBISD Bond Committee 2021

April 6, 2021

Introduction

Program Participation

Oak Run MS BOYS – 224 Athletes
Oak Run MS GIRLS – 173 Athletes

New Braunfels MS BOYS – 253 Athletes
New Braunfels MS GIRLS 161 Athletes

New Braunfels HS BOYS – 509 Athletes
New Braunfels HS GIRLS – 256 Athletes

NBISD BOYS – 986 Athletes
NBISD GIRLS – 590 Athletes

TOTAL IN ATHLETICS - 1,576

NB ATHLETICS VISION

Costs

STADIUM IMPROVEMENTS

\$10 – 25 Million

STATS:

COST – \$2,600,000

COMPLETED – 2016

CAPACITY – Exist.

Press Box
Replacement

3,680 sf.



NEW DISTRICT STADIUM

\$40 – 70 Million + Land

STATS:

COST – \$40,000,000

COMPLETED – 2019

CAPACITY – 8,000

COMMUNITY ROOM

2 LEVEL PRESS BOX

FIELDHOUSE



Campus vs. District Wide

IDENTITY AND OWNERSHIP

CAMPUS

VS.

DISTRICT WIDE

**HOME FIELD
ADVANTAGE**

**NEUTRAL
FACILITY**

FIELD UTILIZATION

CAMPUS

VS.

DISTRICT WIDE

DAILY

**THURSDAY-
SATUDAY**

SEATING CAPACITY

CAMPUS

VS.

DISTRICT WIDE

RIGHT SIZED

BIG GAME

COMMUNITY AND DISTRICT NEEDS

CAMPUS

VS.

DISTRICT WIDE

**CAMPUS
AMENITIES**

SHARED PARKING FOR
COMMUNITY ROOM
PERFORMING ARTS
NATATORIUM

COSTS

CAMPUS

VS.

DISTRICT WIDE

**BUILD AND
MAINTAIN EACH
CAMPUS**

**ONE STADIUM
SERVES UP TO
SIX CAMPUSES**

TRAVEL

CAMPUS

VS.

DISTRICT WIDE

**HOME FIELD
ADVANTAGE**

INCONVENIENCE

TEAM
BAND
BOOSTER

Existing Facilities



UNICORN STADIUM
New Braunfels ISD

First Constructed: 1960's

Capacity: 9132



UNICORN STADIUM
New Braunfels ISD

First Constructed: 1960's

Capacity: 9132



UNICORN STADIUM:

Built in 1960's

Concessions,
Restrooms, Visitor
bleachers replaced and
other upgrades - 2017



UNICORN STADIUM:

- Press box 20+ years old
- Limited size compared to surrounding stadiums
- Does not accommodate video board equipment



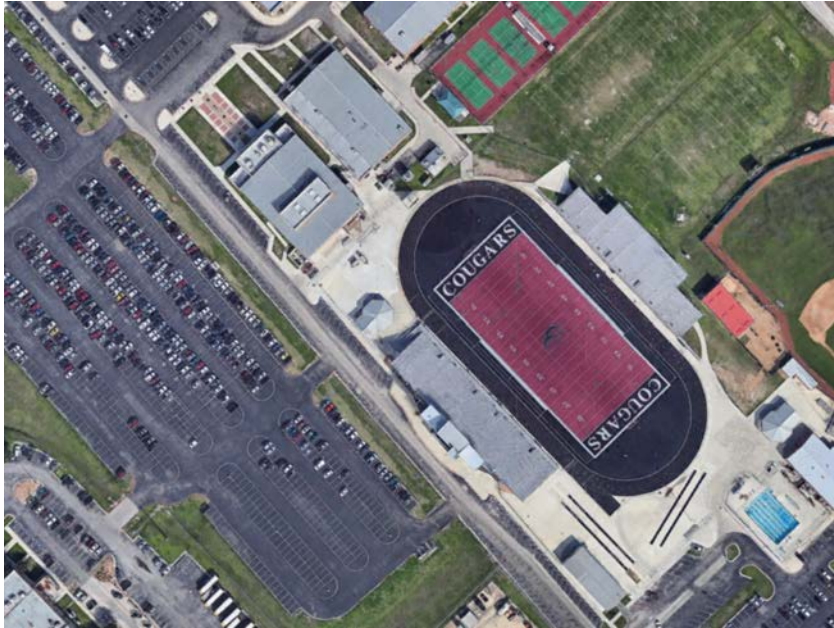
NEW BRAUNFELS
MIDDLE SCHOOL



NEW BRAUNFELS
MIDDLE SCHOOL

Surrounding Stadiums

SURROUNDING STADIUMS



COUGAR STADIUM
Comal ISD



RANGER STADIUM
Comal ISD

SEATING CAPCITIES RANGE FROM 7,000 – 9,000 SEATS



RANGER STADIUM PRESSBOX



COUGAR STADIUM PRESS BOX

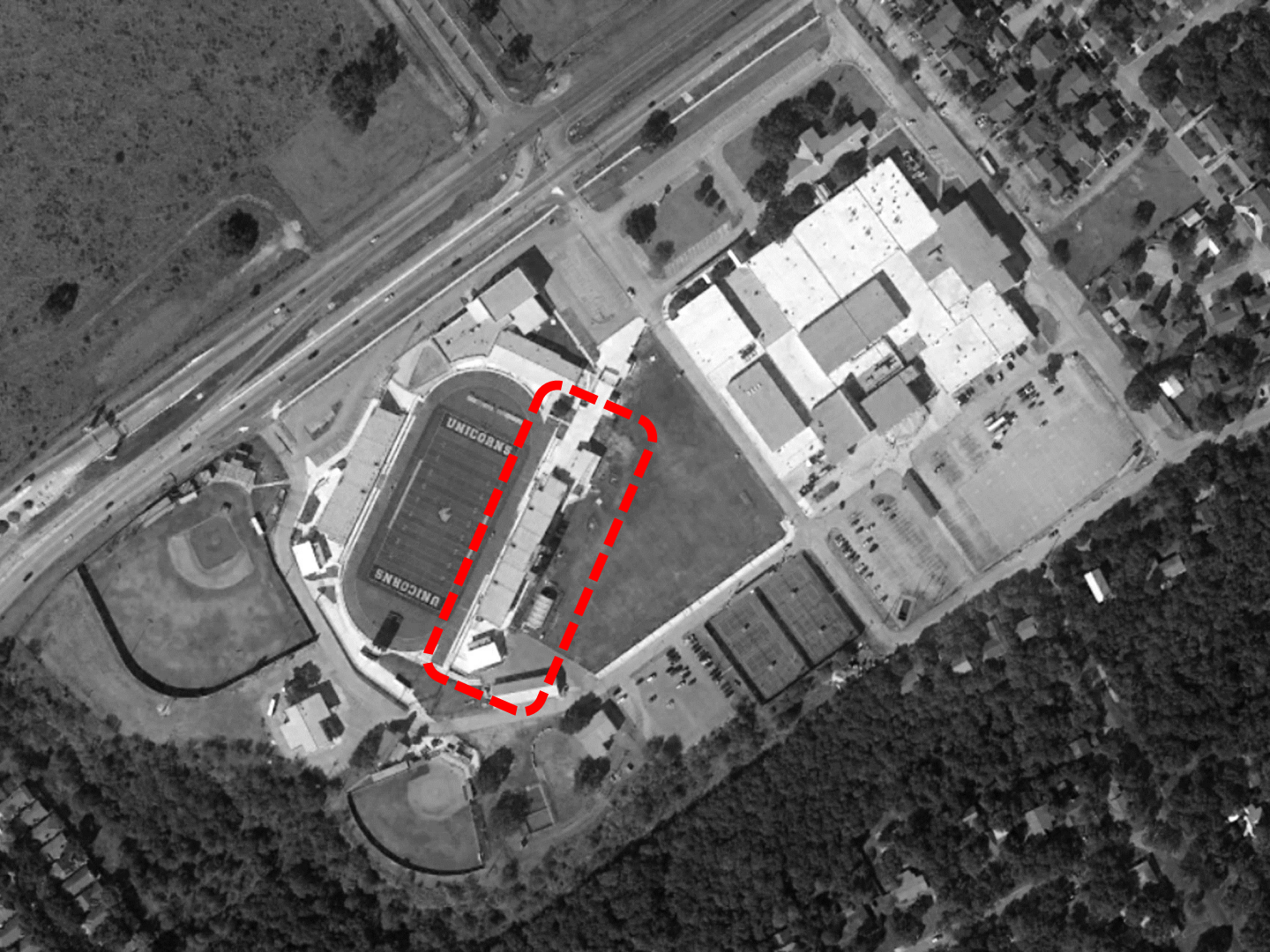


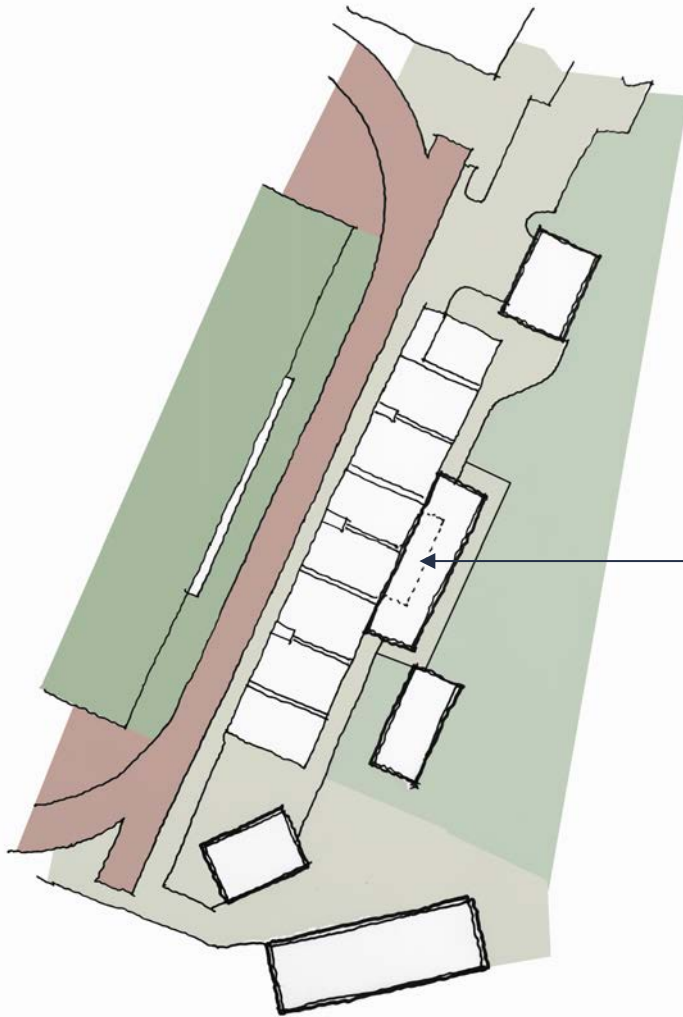
MATADOR STADIUM, SEGUIN

What if?

NEW BRAUNFELS HIGH SCHOOL







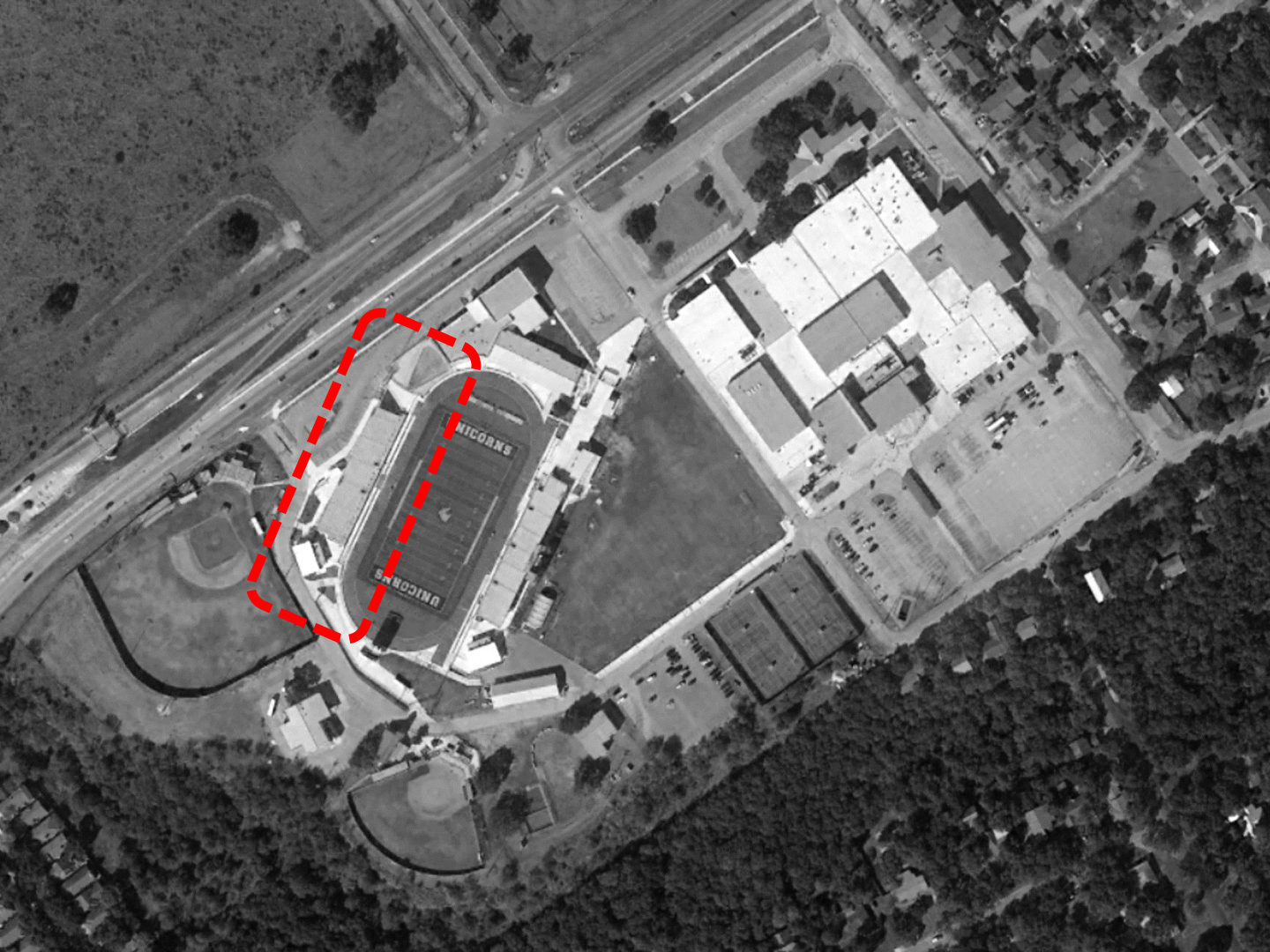
Pros

- Home seating capacity unaffected

Cons

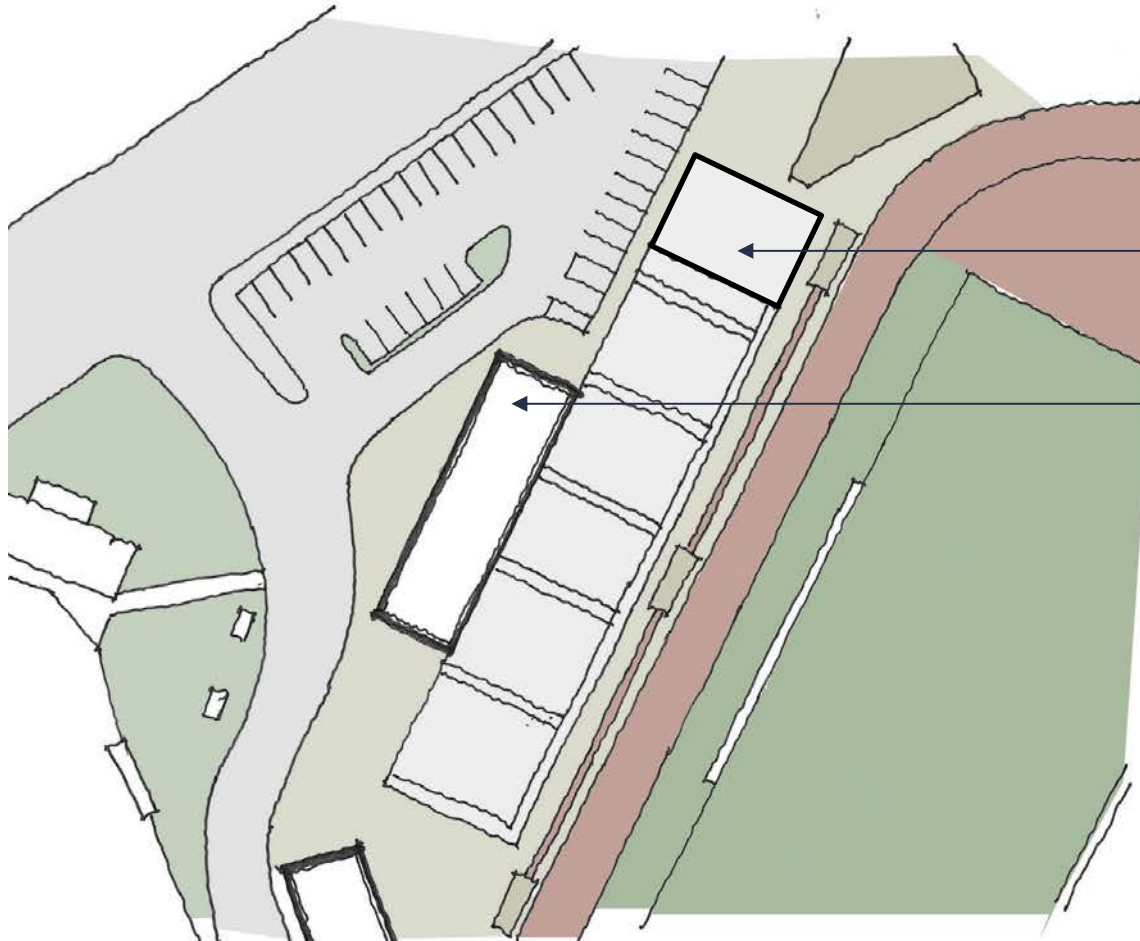
- Maintains west orientation
- Could impact storage building
- Press box offline during construction

PRESS BOX RENOVATION ADDITION
OR REPLACEMENT





12 PARKING SPACES
DISPLACED



INCREASED SEATING

PRESS BOX

Pros

- East orientation

Cons

- Reduces parking
- Additional bleachers needed to increase home side capacity

What if?

LONG CREEK HIGH SCHOOL



1,280 TOTAL PARKING

1:4 - 5,120

1:5 - 6,400

1:6 - 7,680

1:7 - 8,960

1:8 - 10,240



1,280 TOTAL PARKING

1:4 - 5,120

1:5 - 6,400

1:6 - 7,680

1:7 - 8,960

1:8 - 10,240





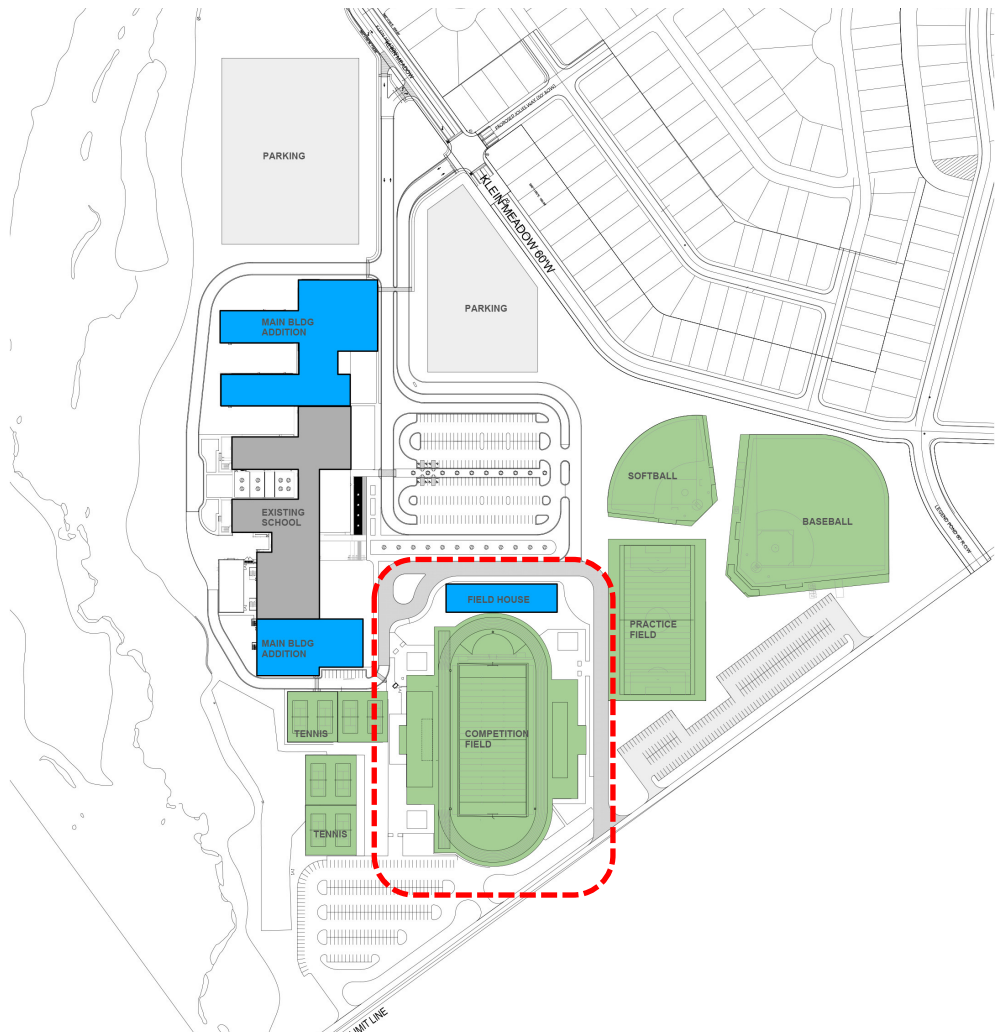
vs.



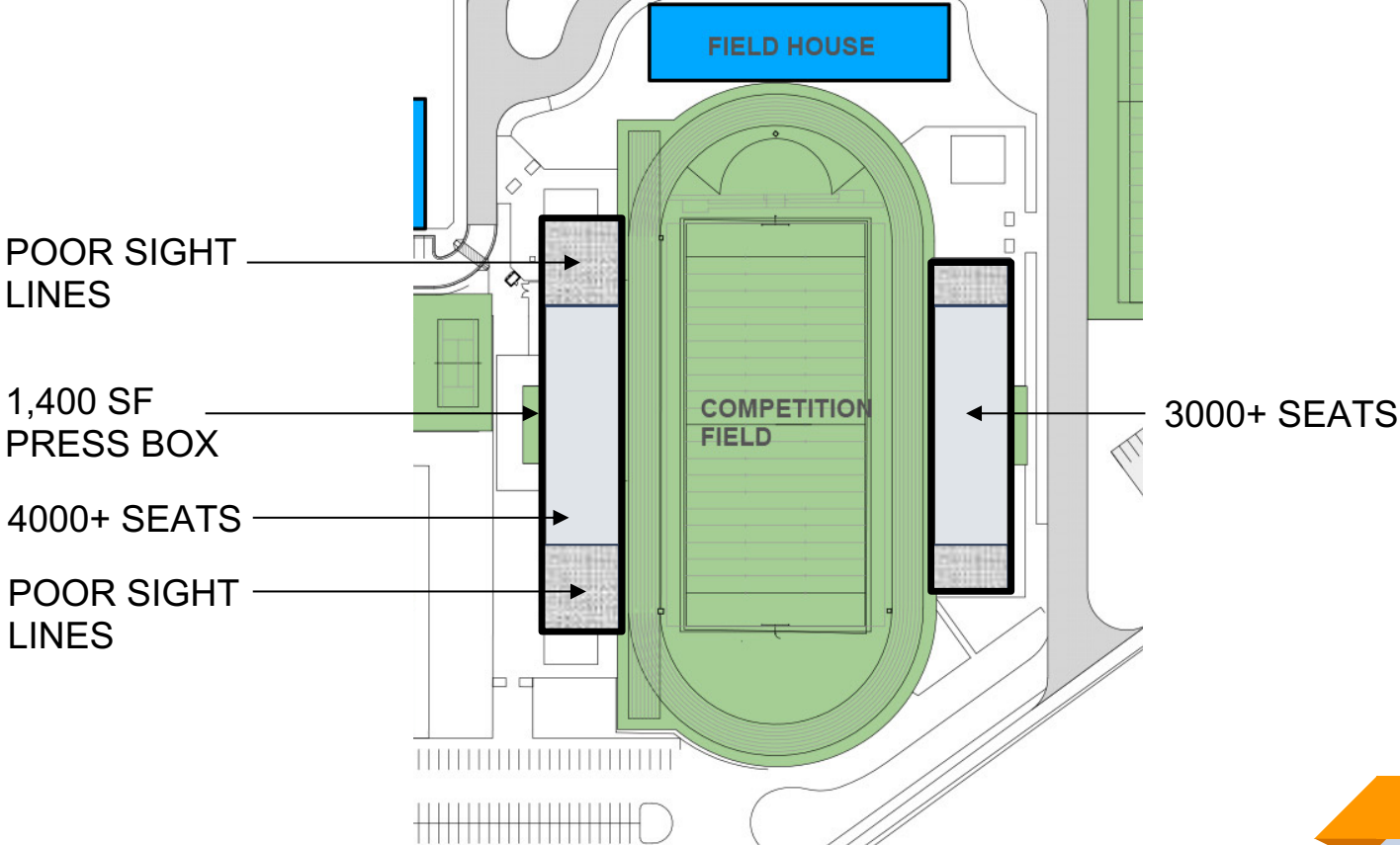


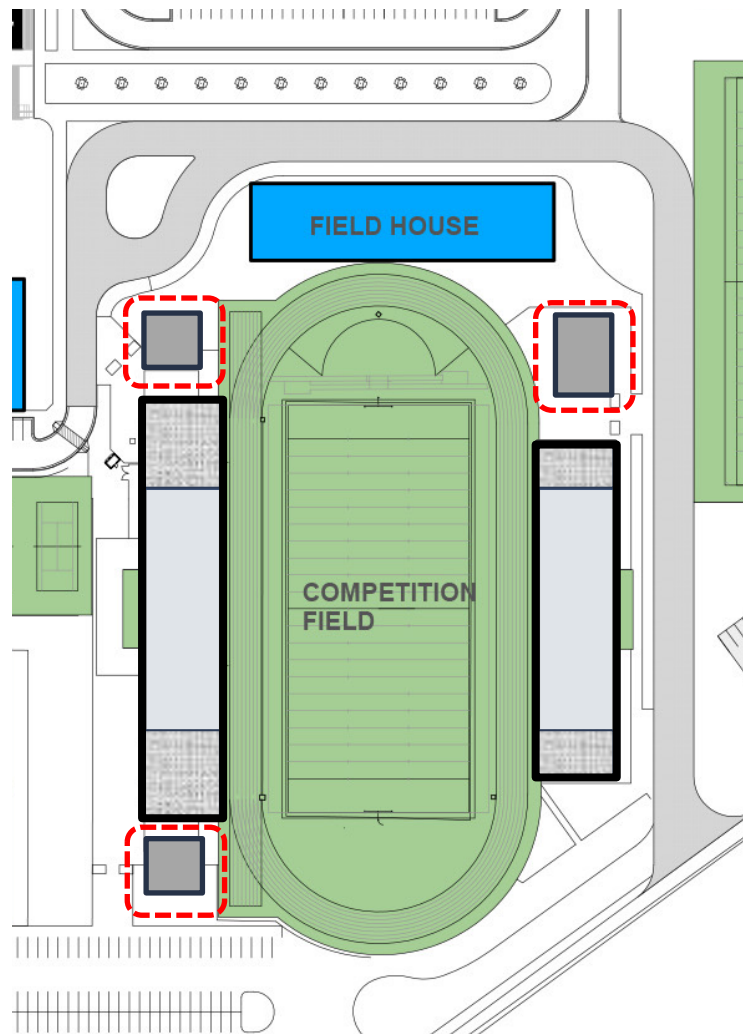






7000+ TOTAL SEATS





72 WOMEN'S TOILETS
37 MEN'S TOILETS
3 CONCESSIONS

District High School Stadium Trends

Press Box Hospitality

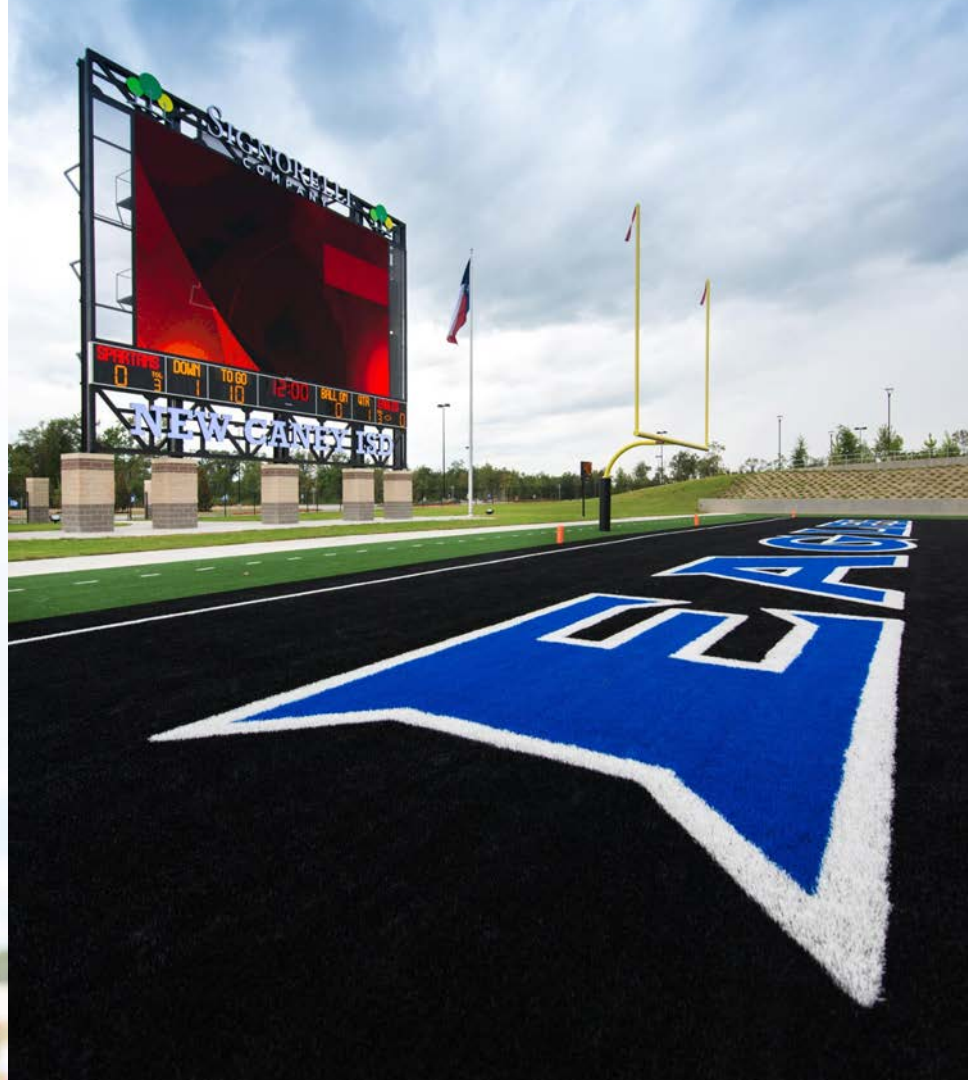














Destination Seating



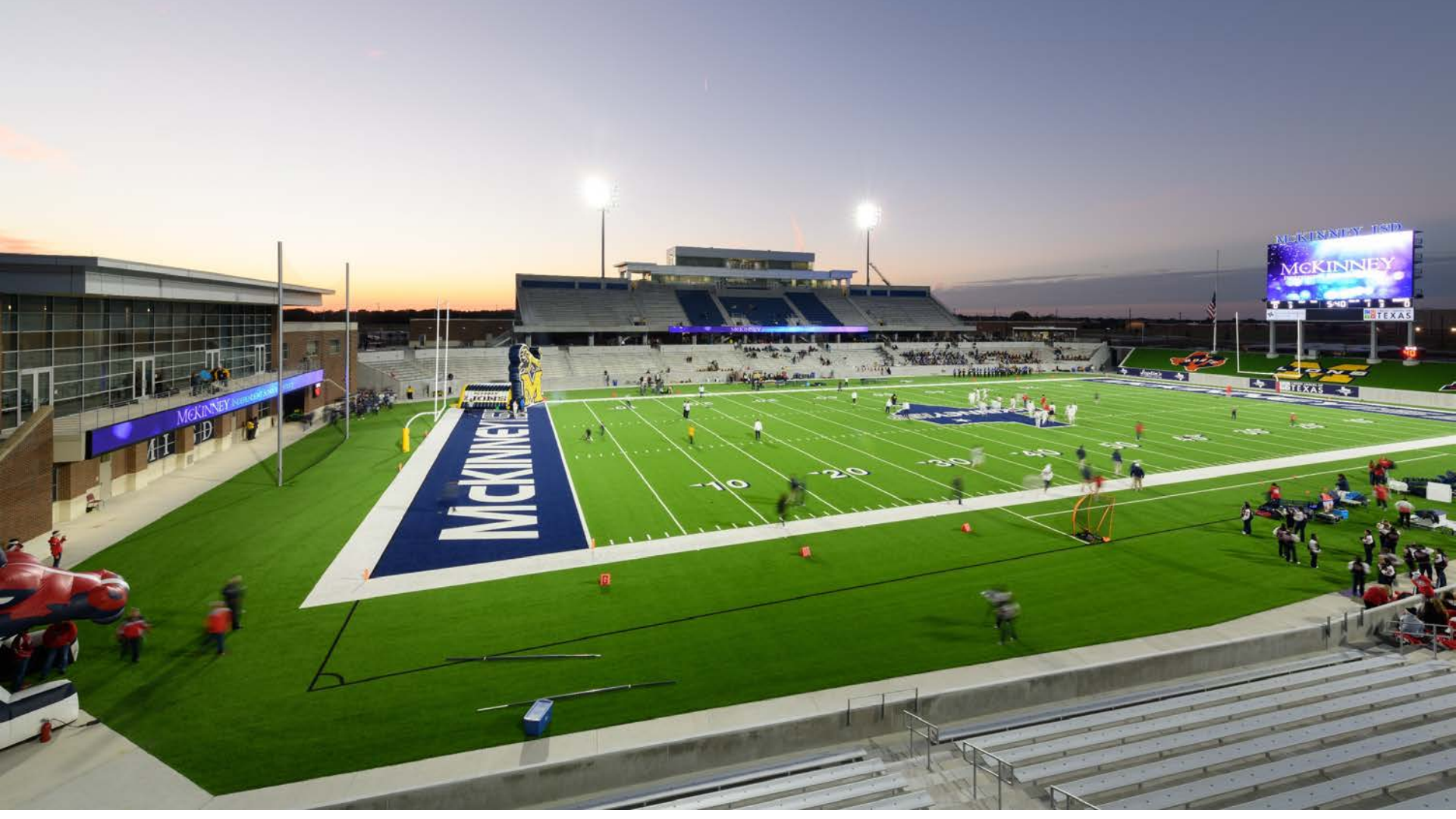
PLANET FORD STADIUM







Football / Soccer Focused



MCKINNEY ISD
MCKINNEY
TEXAS

MCKINNEY
AT D





FREEDOM FIELD
ALLEN, TX

FREEDOM FIELD

Q1	Q2	Q3	Q4	OT
0	0	0	0	0
0	0	0	0	0

G

Community Spaces



RANDALL REED CENTER

NO PARKING FIRE LANE TOW AWAY ZONE







ALVINISD
EST. 1925

TSA



CTE Center
Bell Schedule

first	7:20-8:06
second	8:13-8:58
third	9:05-9:50
academy	9:57-10:27
fourth	10:34-11:19
fifth	11:26-12:11
sixth	12:56-1:41
seventh	1:48-2:35

Activity
Bell Schedule

first	7:20-8:08
first	8:12-9:00
	9:02

WHS

RESPECT
DEDICATED
PREPARING
TRUSTWORTHY
INTEGRITY



Locker rooms









Fine Arts Integration







Lighting Customization



4201

FIRE LANE NO PARKING

FIRE LANE NO PARKING



PLANET
Ford
STADIUM

TICKETING

NEW CONCESSION

NEW CONCESSION



FREEDOM
FIELD
ALVIN ISD

WEST GATE



FREEDOM
FIELD
ALVIN ISD

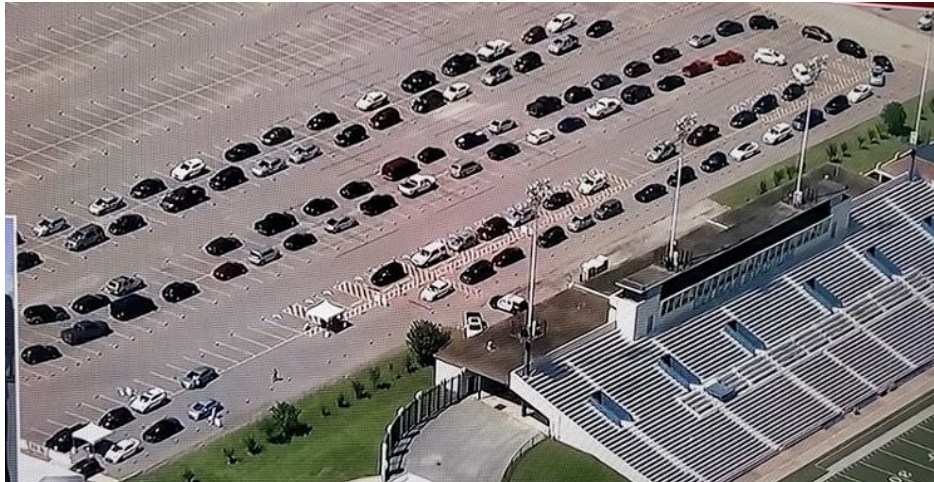
WEST GATE

SPONSORSHIP BANNER WITH TEAM PHOTOS



Multi-purpose Facilities





NEXT STEPS