



An inquiry into **the nature of the self**: beliefs and values; personal, physical, mental, social and spiritual health; human relationships including families, friends, communities, and cultures; rights and responsibilities; **what it means to be human**.

Sept 5 – Oct 7

Central Idea: Our senses help us discover the world around us.

Key Concepts: form, function, connection
Related Concepts: environment, senses, communication, observation, healthy, unhealthy

Learner Profile: thinkers, reflective, risk-takers, communicators, balanced

An inquiry into:

- the five senses (**form**)
- purposes of the senses (**function**)
- how we use our senses to express and experience our world (**connection**)



An inquiry into orientation in place and time; personal histories; homes and journeys; the discoveries, explorations, and migrations of humankind; the relationships between and the interconnectedness of individuals and civilizations, from local and global perspectives.



An inquiry into **the ways in which we discover and express ideas, feelings, nature, culture, beliefs and values; the ways in which we reflect on, extend and enjoy our creativity; our appreciation for the aesthetic**.

visiting numerous times

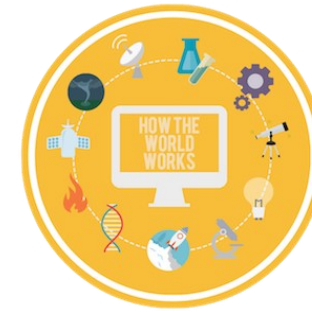
Central Idea: People can express themselves through different forms of art.

Key Concepts: form, connection, perspective
Related Concepts: similarities, differences, individuality, self-expression

Learner Profile: open-minded, thinkers, communicators, risk-takers, reflective

An inquiry into:

- different forms of art (**form**)
- the ways we express ourselves (**connection**)
- the feelings of artists (**perspective**)
- the creation of art (**form**)



An inquiry into **the natural world and its laws**; the interaction between the natural world (physical and biological) and human societies; how humans use their understanding of scientific principles; the impact of scientific and technological advances on society and the environment.

Oct 10 – Nov 4

Central Idea: Observations will lead to an understanding of patterns and cycles.

Key Concepts: form, connection, causation
Related Concepts: cycles, sequences, patterns, interdependence, relationships

Learner Profile: knowledgeable, inquirers, thinkers

An inquiry into:

- characteristics of patterns and cycles (**form**)
- patterns are everywhere (**connection**)
- what causes patterns and cycles to change (**causation**)



An inquiry into the interconnectedness of human-made systems and communities; the structure and function of organizations; societal decision-making; economic activities and their impact on humankind and the environment.



An inquiry into the rights and responsibilities in the struggle to share finite resources with other people and with other living things; **communities and the relationship within and between them**; access to equal opportunities; peace and conflict resolution.

Feb 6 – Mar 3

Central Idea: Habitats need different things.

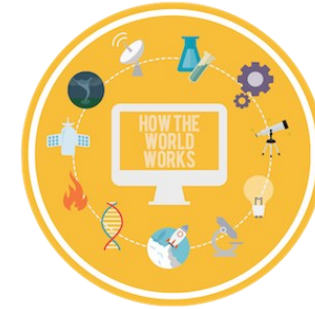
Key Concepts: form, responsibility, change
Related Concepts: habitats, organisms, relationships

Learner Profile: knowledgeable, caring, principled

An inquiry into:

- habitats and their characteristics (**form**)
- my responsibility to nature (**responsibility**)
- how characteristics of habitats change (**change**)

Pre-Kindergarten 3



An inquiry into the nature of the self; beliefs and values; **personal, physical, mental, social,** and spiritual health; **human relationships including families, friends, communities and cultures; rights and responsibilities;** what it means to be human.

An inquiry into orientation in place and time; personal histories; homes and journeys; the discoveries, explorations, and migrations of humankind; the relationships between and the interconnectedness of individuals and civilizations, from local and global perspectives.

An inquiry into **the ways in which we discover and express ideas, feelings, nature, culture, beliefs and values; the ways we reflect on, extend and enjoy our creativity;** our appreciation for the aesthetic.

An inquiry into the natural world and its laws; the interaction between the natural world (physical and biological) and human societies; how humans use their understanding of scientific principles; the impact of scientific and technological advances on society and the environment.

An inquiry into **the interconnectedness of human-made systems and communities; the structure and function of organizations; societal decision-making; economic activities and their impact on humankind and the environment.**

An inquiry into **rights and responsibilities in the struggle to share finite resources with other people and with other living things;** communities and the relationships within and between them; access to equal opportunities; peace and conflict resolution.

Oct 24 – Dec 15

Sept 6 – Oct 21

Jan 4 - Mar 9

Mar 22 - May 19

Central Idea: Homes reflect personal identity and local culture.

Central Idea: People can learn and express themselves through creativity and play.

Central Idea: Food goes through changes.

Central Idea: Interdependent living things make up an ecosystem.

Key Concepts: form, function, connection
Related Concepts: relationships, structure, emotions, communities

Key Concepts: change, causation, perspective
Related Concepts: exploration, discovery, imagination, creativity, expression

Key Concepts: change, form
Related Concepts: systems, life cycles, production, interdependence, communities, sustainability, healthy living

Key Concepts: causation, connection, responsibility
Related Concepts: systems, cycles, interdependence, adaptation, sustainability, resources

Learner Profile: caring, open-minded, knowledgeable

Learner Profile: inquirers, open-minded, balanced

Learner Profile: communicators, knowledgeable, risk takers, inquirers

Learner Profile: caring, reflective, thinkers, principled

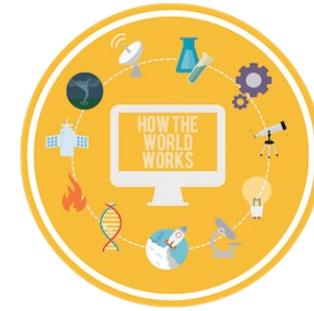
An inquiry into:
• attributes of a home (**function**)
• differences between a house and a home (**form**)
• emotions within a home (**connection**)

An inquiry into:
• creativity through play (**causation**)
• real versus imaginary (**perspective**)
• idea development during play (**change**)

An inquiry into:
• the changes food goes through (**change**)
• the production of food (**form**)
• the roles people play in food production (**form**)

An inquiry into:
• the food chain (**causation**)
• relationships between different forms of sea life (**connection**)
• the care of our ocean (**responsibility**)

Pre-Kindergarten 4



An inquiry into the nature of the self; beliefs and values; personal, physical, mental, social and spiritual health; **human relationships including families, friends, communities, and cultures; rights and responsibilities**; what it means to be human.

An inquiry into orientation in place and time; personal histories; homes and journeys; the discoveries, explorations, and migrations of humankind; the relationships between and the interconnectedness of individuals and civilizations, from local and global perspectives.

An inquiry into **the ways in which we discover and express ideas, feelings, nature, culture, beliefs and values; the ways in which we reflect on, extend and enjoy our creativity**; our appreciation for the aesthetic.

An inquiry into the natural world and its laws; **the interaction between the natural world (physical and biological) and human societies**; how humans use their understanding of scientific principles; the impact of scientific and technological advances on society and the environment.

An inquiry into the interconnectedness of human-made systems and communities; the structure and function of organizations; societal decision-making; economic activities and their impact on humankind and the environment.

An inquiry into **the rights and responsibilities in the struggle to share finite resources with other people and with other living things**; communities and the relationship within and between them; access to equal opportunities; peace and conflict resolution.

Aug 16 – Sept 30

Oct 10 – Dec 16

Jan 3 – Mar 10

Mar 21 - May 25

Central idea: People live, work, and play in communities.

Key Concepts: form, responsibility, causation

Related Concepts: structure, needs, wants, contributions

Learner Profile: caring, balanced

An inquiry into:

- the structure and needs of a community (**form**)
- the responsibilities and contributions of community members (**responsibility**)
- needs and wants (**causation**)

Central idea: Celebrations and traditions may help unify people.

Key Concepts: form, perspective
Related Concepts: relationships, culture, beliefs, values, patterns

Learner Profile: open-minded, reflective, communicators

An inquiry into:

- an exploration of the history and geography of celebrations and traditions (**form**)
- the recurrent nature of traditions (**form**)
- the similarities and differences across cultures (**perspective**)

Central idea: Inquiry leads to exploration and discovery.

Key Concepts: form, function, connection
Related Concepts: cycles, curiosity, problem, solution

Learner Profile: inquirers, risk-takers, knowledgeable

An inquiry into:

- the importance of questions (**form**)
- the solar system (**function**)
- patterns and cycles (**connection**)

Central idea: People's choices may change the environment.

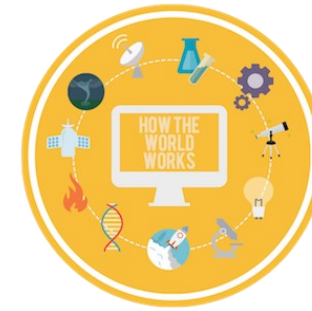
Key Concepts: connection, change, responsibility
Related Concepts: impact, resources, consequences

Learner Profile: caring, principled, thinkers

An inquiry into:

- changes in the environment (**change**)
- the responsibility toward living things (**responsibility**)
- the connection between living things (**connection**)

Kindergarten



An inquiry into the nature of the self; **beliefs and values**; personal, physical, mental, social and spiritual health; **human relationships including** families, friends, communities, and **cultures**; rights and responsibilities; what it means to be human.

An inquiry into **orientation in place and time**; personal histories; **homes and journeys**; the discoveries, **explorations, and migrations of humankind**; the relationships between and the interconnectedness of individuals and civilizations, from local and global perspectives.

An inquiry into **the ways in which we discover and express ideas**, feelings, nature, **culture, beliefs, and values**; **the ways in which we reflect on, extend, and enjoy our creativity**; our appreciation for the aesthetic.

An inquiry into the natural world and its laws; the interaction between the natural world (physical and biological) and human societies; **how humans use their understanding of scientific principles**; the impact of scientific and advances on society and the environment.

An inquiry into **the interconnectedness of human-made systems and communities**; the structure and function of organizations; societal decision-making; **economic activities and their impact on humankind** and the environment.

An inquiry into **the rights and responsibilities in the struggle to share finite resources with other people and with other living things**; **communities and the relationship within and between them**; access to equal opportunities; peace and conflict resolution.

Feb 13 – Mar 10

Sept 19 – Oct 21

continual investigation

Jan 3 – Jan 27

Mar 27 - Apr 28

Nov 1 – Dec 9

Central idea: A country's symbols may represent the values and principles of its people and/or government.

Central idea: The need for change may cause people to immigrate.

Central idea: A culture can express its beliefs and values through literature.

Central idea: Observation can assist in formulating questions and ideas that may solve problems.

Central idea: Economic systems create structures for distribution of resources.

Central idea: Consequences result from ongoing development.

Key Concepts: form, causation, connection

Key Concepts: function, causation perspective

Key Concepts: connection, perspective

Key Concepts: perspective, change connection

Key Concepts: form, function, connection

Key Concepts: responsibility, change causation

Related Concepts: history, symbolism relationships

Related Concepts: immigration, opportunity, cultures

Related Concepts: communication, purpose, theme

Related Concepts: inference, observation, conclusion

Related Concepts: business, economics

Related Concepts: ecology, environment, conservation

Learner Profile: balanced, reflective

Learner Profile: communicators, knowledgeable

Learner Profile: communicators, inquirers, open-minded, risk-takers

Learner Profile: thinkers, reflective

Learner Profile: balance, reflective

Learner Profile: knowledgeable, open-minded, caring, principled

An inquiry into:

- how symbols provide meaning (**form**)
- the history and significance of symbols (**causation**)
- how art and music reflect the heritage of a country (**connection**)

An inquiry into:

- the life of indigenous people before immigration (**function**)
- causes of immigration (**causation**)
- why immigration continues today (**perspective**)

An inquiry into:

- the meanings or lessons learned or portrayed in various forms of literature (**connection**)
- how literature around the world portrays and preserves cultural values and beliefs (**perspective**)
- similarities and differences between literature from different cultures (**perspective**)

An inquiry into:

- observations may vary from person to person (**perspective**)
- similarities/differences between free exploration and systematic observation (**change**)
- creating solutions from gathered data (**connection**)

An inquiry into:

- the definitions of economic elements (**form**)
- types of resources businesses use to operate (**function**)
- the fundamentals of running a business (**connection**)

An inquiry into:

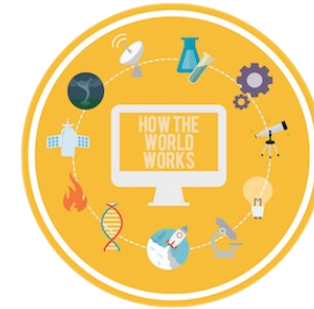
- promoting global responsibility (**responsibility**)
- how development changes the environment (**change**)
- causes of development (**causation**)

Upper Primary/Cycle B 2022-2023



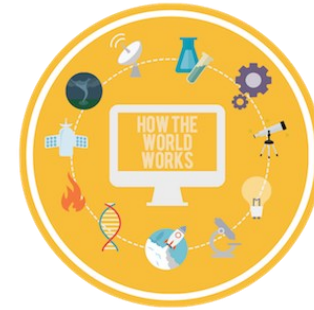
<p>An inquiry into the nature of the self; beliefs and values; personal, physical, mental, social and spiritual health; human relationships including families, friends, communities, and cultures; rights and responsibilities; what it means to be human.</p>	<p>An inquiry into orientation in place and time; personal histories; homes and journeys; the discoveries, explorations and migrations of humankind; the relationships between and the interconnectedness of individuals and civilizations, from local and global perspectives.</p>	<p>An inquiry into the ways in which we discover and express ideas, feelings, nature, culture, beliefs and values; the ways in which we reflect on, extend and enjoy our creativity; our appreciation for the aesthetic.</p>	<p>An inquiry into the natural world and its laws; the interaction between the natural world (physical and biological) and human societies; how humans use their understanding of scientific principles; the impact of scientific and technological advances on society and the environment.</p>	<p>An inquiry into the interconnectedness of human-made systems and communities; the structure and function of organizations; societal decision-making; economic activities and their impact on humankind and the environment.</p>	<p>An inquiry into the rights and responsibilities in the struggle to share finite resources with other people and with other living things; communities and the relationship within and between them; access to equal opportunities; peace and conflict resolution.</p>
<p>continual investigation</p>	<p>Oct 17 – Nov 18</p>	<p>Jan 30 – Mar 31</p>	<p>Nov 28 – Jan 27</p>	<p>Apr 3 – May 12</p>	<p>Aug 29 – Oct 14</p>
<p>Central idea: Self-understanding contributes to responsible choices.</p>	<p>Central idea: Culture enriches communities.</p>	<p>Central idea: Literature and informational text create connections to convey important lessons to the reader and listener.</p>	<p>Central idea: Change in weather and climate shape daily lives.</p>	<p>Central idea: Marketplaces depend on the ability to produce goods and supply services that can be exchanged.</p>	<p>Central idea: Children around the world deserve equal access to resources.</p>
<p>Key Concepts: form, function, connection Related Concepts: self-understanding, choices, mindfulness</p>	<p>Key Concepts: form, change, responsibility Related Concepts: contributions, civic virtues, compromise</p>	<p>Key Concepts: perspective, form Related Concepts: literature, lessons, genre</p>	<p>Key Concepts: form, causation, connection Related Concepts: weather, systems, climate</p>	<p>Key Concepts: form, function, connection Related Concepts: markets, business, interdependence, economics</p>	<p>Key Concepts: causation, connection, form Related Concepts: education, equity, rights, resources</p>
<p>Learner Profile: caring, balanced, inquirers, communicators</p>	<p>Learner Profile: thinkers, principled, knowledgeable</p>	<p>Learner Profile: open-minded, reflective</p>	<p>Learner Profile: inquirers, thinkers, communicators, reflective</p>	<p>Learner Profile: knowledgeable, principled, risk-takers</p>	<p>Learner Profile: reflective, inquirers, thinkers, caring</p>
<p>An inquiry into:</p> <ul style="list-style-type: none"> • choices (form) • well-being (function) • impact of my choices (connection) 	<p>An inquiry into:</p> <ul style="list-style-type: none"> • what is culture (form) • contributions that change a community (change) • responsibilities of a community (responsibility) 	<p>An inquiry into:</p> <ul style="list-style-type: none"> • how literature facilitates understanding of lessons (form) • how stories help us understand other people and their perspectives (perspective) • the comparison of fictional and factual story elements (form) 	<p>An inquiry into:</p> <ul style="list-style-type: none"> • measuring and predicting weather (form) • the impact of and response to extreme weather events (causation) • sources of climate change and its impact (connection) 	<p>An inquiry into:</p> <ul style="list-style-type: none"> • money comes in various forms (form) • marketplaces are different around the world (function) • imports and exports can be exchanged in different ways (connection) 	<p>An inquiry into:</p> <ul style="list-style-type: none"> • the access and right to various resources (causation) • the power of education and reading (connection) • the world in spatial terms (form)

Third Grade 2022-2023



<p>An inquiry into the nature of the self; beliefs and values; personal, physical, mental, social and spiritual health; human relationships including families, friends, communities, and cultures; rights and responsibilities; what it means to be human.</p>	<p>An inquiry into orientation in place and time; personal histories; homes and journeys; the discoveries, explorations and migrations of humankind; the relationships between and the interconnectedness of individuals and civilizations, from local and global perspectives.</p>	<p>An inquiry into the ways in which we discover and express ideas, feelings, nature, culture, beliefs and values; the ways in which we reflect on, extend and enjoy our creativity; our appreciation for the aesthetic.</p>	<p>An inquiry into the natural world and its laws; the interaction between the natural world (physical and biological) and human societies; how humans use their understanding of scientific principles; the impact of scientific and technological advances on society and the environment.</p>	<p>An inquiry into the interconnectedness of human-made systems and communities; the structure and function of organizations; societal decision-making; economic activities and their impact on humankind and the environment.</p>	<p>An inquiry into the rights and responsibilities in the struggle to share finite resources with other people and with other living things; communities and the relationship within and between them; access to equal opportunities; peace and conflict resolution.</p>
<p>Nov 28 – Jan 27</p>	<p>Jan 30 – Mar 31</p>	<p>Apr 3 – May 12</p>	<p>continual investigation</p>	<p>Aug 29 – Oct 14</p>	<p>Oct 17 – Nov 18</p>
<p>Central idea: Awareness encourages responsible action.</p>	<p>Central idea: Resources may stimulate growth in an area.</p>	<p>Central idea: Poetry reflects culture and self.</p>	<p>Central idea: Relationships change the natural world.</p>	<p>Central idea: Types of government may determine the rights and responsibilities of its citizens.</p>	<p>Central idea: Cooperation and conflict shape how humans interact with each other.</p>
<p>Key Concepts: function, change, responsibility Related Concepts: awareness, choices, leadership, action</p>	<p>Key Concepts: causation, change, form Related Concepts: growth, resources, population</p>	<p>Key Concepts: form, connection, perspective Related Concepts: expression, genre, patterns, judgement</p>	<p>Key Concepts: change, connection, causation Related Concepts: relationships, action, systems</p>	<p>Key Concepts: function, connection, responsibility Related Concepts: government, systems, freedom, rights, philanthropy</p>	<p>Key Concepts: causation, function, perspective Related Concepts: conflict, culture, cooperation, exploration, respect</p>
<p>Learner Profile: principled, risk-takers, communicators, knowledgeable, open-minded</p>	<p>Learner Profile: balance</p>	<p>Learner Profile: thinkers, knowledgeable communicators, reflective</p>	<p>Learner Profile: thinkers, inquirers, knowledgeable, reflective, caring</p>	<p>Learner Profile: balanced, inquirers, principled</p>	<p>Learner Profile: communicators, open-minded</p>
<p>An inquiry into:</p> <ul style="list-style-type: none"> • how awareness motivates people (function) • how personal choices and actions can change society (change) • responsibilities of a leader (responsibility) 	<p>An inquiry into:</p> <ul style="list-style-type: none"> • why population changes (causation) • how humans impact resources (change) • impact of growth (form) 	<p>An inquiry into:</p> <ul style="list-style-type: none"> • structure of poems (form) • how perspective informs writing (perspective) • connections and cultural perspectives (connection) 	<p>An inquiry into:</p> <ul style="list-style-type: none"> • interacting systems (connection) • universal and inevitable changes (change) • relationships and consequences of actions (causation) 	<p>An inquiry into:</p> <ul style="list-style-type: none"> • types of government (function) • the connection government has to oneself (connection) • rights and responsibilities of citizens (responsibility) 	<p>An inquiry into:</p> <ul style="list-style-type: none"> • the motives people explore (interact) (function) • causes and effects of conflict (causation) • the benefits and challenges of exploration (perspective)

Fourth / Multi-Age 2022-2023



An inquiry into the nature of the self; beliefs and values; personal, physical, mental, social and spiritual health; human relationships including families, friends, communities, and cultures; **rights and responsibilities; what it means to be human.**

An inquiry into orientation in place and time; **personal histories**; homes and journeys; the discoveries, explorations and migrations of humankind; **the relationships between and the interconnectedness of individuals and civilizations, from local and global perspectives.**

An inquiry into the ways in which we discover and express ideas, feelings, nature, culture, beliefs and values; the ways in which we reflect on, extend and enjoy our creativity; our appreciation for the aesthetic.

An inquiry into the natural world and its laws; **the interaction between the natural world (physical and biological) and human societies; how humans use their understanding of scientific principles**; the impact of scientific and technological advances on society and the environment.

An inquiry into the interconnectedness of human-made systems and communities; the structure and function of organizations; **societal decision-making; economic activities and their impact on humankind and the environment.**

An inquiry into the rights and responsibilities in the struggle to share finite resources with other people and with other living things; **communities and the relationship within and between them**; access to equal opportunities; peace and conflict resolution.

Aug 22 – Oct 14

Feb 6 – Mar 10

continual investigation

revisiting numerous times

Oct 17 – Nov 18

Mar 21 – Apr 24

Central idea: Human rights and responsibilities connect, help, and protect people.

Central idea: Diversity creates new opportunities and ideas.

Central idea: Exhibition

Central idea: Inquiry nurtures curiosity and an understanding of how the world works.

Central idea: Taking risks and imagining new possibilities encourages change and growth.

Central idea: Disasters compel people to take action.

Key Concepts: form, function, connection
Related Concepts: equality, fairness, respect, tolerance, rights

Key Concepts: function, perspective, responsibility
Related Concepts: diversity, culture, prejudice, identity

Key Concepts:
Related Concepts:

Key Concepts: form, connection, causation
Related Concepts: curiosity, discovery, biodiversity, processes

Key Concepts: connection, causation, change
Related Concepts: growth, conflict, values, government, beliefs, resources, revolution

Key Concepts: causation, connection, responsibility
Related Concepts: impact, action, natural disasters

Learner Profile: open-minded, caring, principled, communicators

Learner Profile: communicators, thinkers, reflective, knowledgeable, open-minded

Learner Profile:

Learner Profile: knowledgeable, thinkers, inquirers, reflective, risk-takers, open-minded

Learner Profile: inquirers, thinkers, knowledgeable, reflective

Learner Profile: balanced, caring, principled, communicators

An inquiry into:

- the role and importance of human rights (**form**)
- how our rights are protected (**function**)
- the relationship between rights and responsibilities (**connection**)

An inquiry into:

- how culture is shared wherever people go (**function**)
- points of view on cultural diversity (**perspective**)
- breaking down cultural barriers (**responsibility**)

An inquiry into:

An inquiry into:

- science as a way of understanding the natural world (**connection**)
- the scientific and design processes (**form**)
- how curiosity drives a person to work on the unknown, the hidden, and undiscovered (**causation**)

An inquiry into:

- how beliefs and values contribute to the actions of communities (**connection**)
- causes of conflict (**causation**)
- changes in society and government because of a conflict (**change**)

An inquiry into:

- causes of natural disasters (**causation**)
- the interconnectedness of our global society (**connection**)
- ways to take initiative (**responsibility**)

Fifth Grade 2022-2023