



BRAWERMAN ELEMENTARY SCHOOL *of* WILSHIRE BOULEVARD TEMPLE

FALL 2022

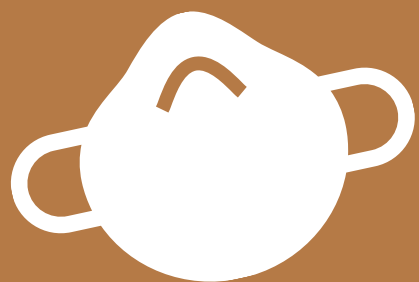
COVID-19 HEALTH AND SAFETY MEASURES

We will be implementing the following protocols for returning to campus.

Antigen Self Test



- All students and faculty are required to take an antigen test upon returning to campus.
- The test must be taken the day before the return to campus. Results must be submitted [HERE](#) by 4PM.

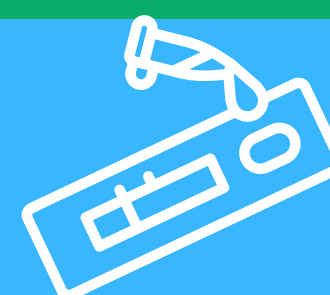


Masking

Students, faculty, and staff are strongly encouraged to follow LA County Department of Public Health's guidance and wear high-quality masks (3-ply surgical masks, KN95, KF94, or N95 masks) when indoors while on campus.

Masks will be available for students who need them. If a certain type of mask is preferred, please send it to school with your child each day.

Covid Testing



- We will no longer administer weekly on-site testing when the school year begins. If conditions change (i.e. case rates dramatically increase), then testing protocols may be modified.
- Antigen tests may be required for return to campus, including after extended breaks, overnight trips, or an exposure.
- At-home antigen tests are highly recommended after travel, large group gatherings, exposure, etc.
- Free antigen tests are available at <https://www.covid.gov/tests>.



Vaccine Requirement

All students in Kindergarten through Grade 6 are required to be fully vaccinated against COVID-19. If you have not already done so, please submit your child's COVID-19 vaccination card to westhealth@brawerman.org or easthealth@brawerman.org as appropriate.

If Sick, Stay Home!



- If a student is not feeling well, they should stay home.
- If a student develops symptoms at school, they will be sent to the health office. Students with Covid related symptoms will be sent home.