



MERCY ACADEMY

Welcome to Mercy Academy!

At Mercy, we believe in empowering young women by unlocking their fullest potential and developing their unique gifts and talents. You'll find that our core values are the driving force behind our educational philosophy and ties that bind us together as a Mercy community. Our students graduate with a sense of pride, purpose and principled leadership. They are confident leaders who are inspired by faith and have the courage to shine their light in the pursuit of social justice and service.

We are also proud to employ Mercy educators who are providing comprehensive and rigorous instruction to meet the needs of every student. They do this within a trusting and caring environment where every individual feels valued, appreciated and loved.

Students are engaged at high levels across our curriculum through real-world, performance-based tasks. We are confident in this type of learning, as it provides them with the necessary skills to excel in their pursuits toward college and future careers. Mercy teachers and students are consistently engaged in learning opportunities that stretch their thinking in complex ways, allowing them to become creators, innovators and problem-solvers as opposed to just consumers of information.

You will find that Mercy is a place that is continuously growing and changing. A commitment to student and teacher learning is an expectation at Mercy. With this at the heart of our work, we focus our professional development around three big ideas: student learning, a culture of collaboration and developing results.

Like our founder Catherine McAuley, we at Mercy Academy "strive to do ordinary things extraordinarily well". That is our Mercy way!

In Mercy,

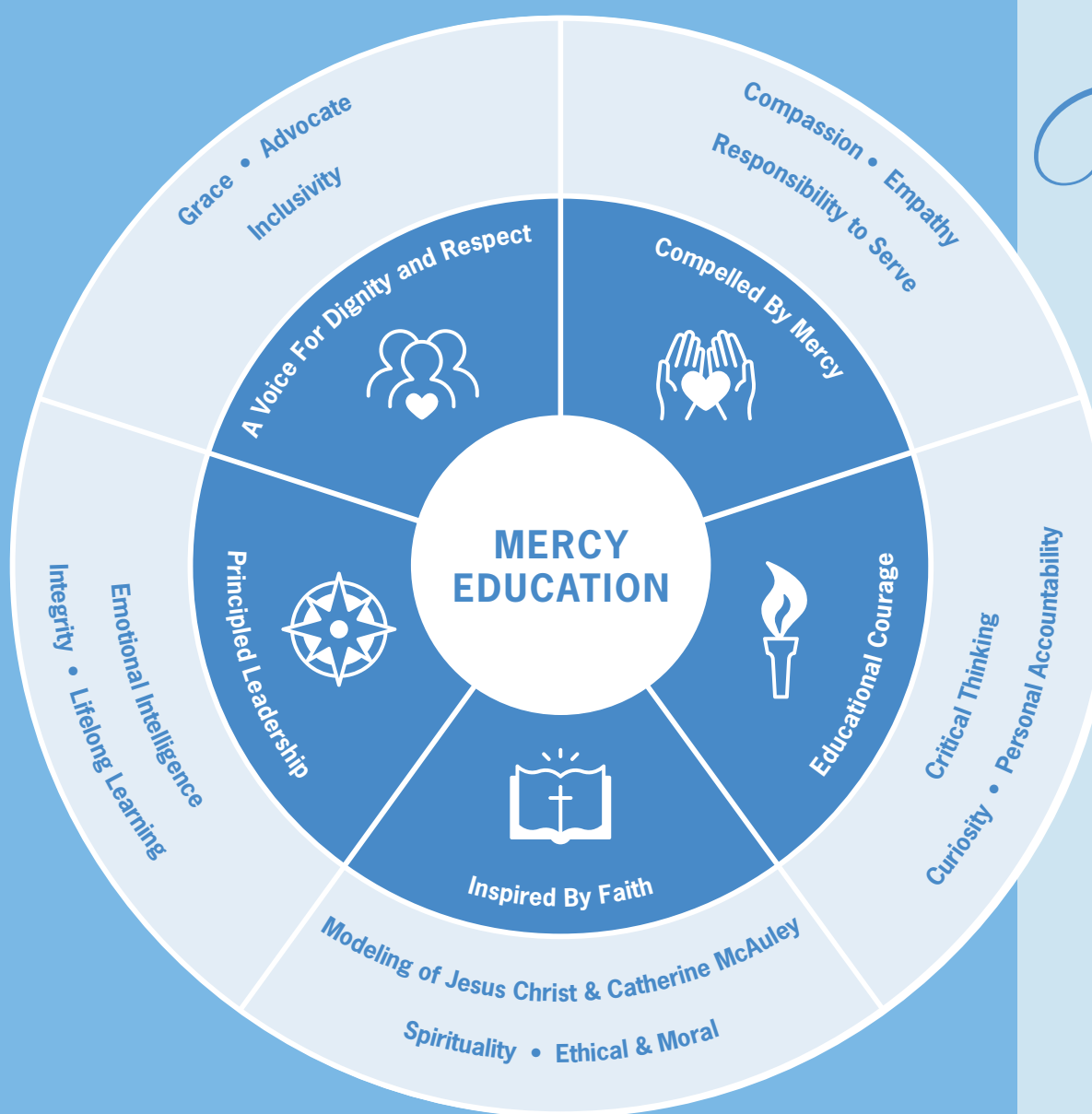


Becky Montague
Becky Montague,
President



Dr. Cynthia Smith-Ough
Dr. Cynthia Smith-Ough
Principal

CHARACTERISTICS OF A MERCY GRADUATE



OUR⁺ Mission

The Academy of Our Lady of Mercy, founded on the vision of Catherine McAuley and sponsored by the Sisters of Mercy, exists to serve young women by:

- † Providing a quality Catholic education within a caring faith community;
- † Offering an academic curriculum which provides opportunities for all learners to excel;
- † Empowering young women to be responsible leaders in service to others;
- † Offering the opportunity to build a sense of community with students of diverse abilities and backgrounds;
- † Providing academic and real-life experiences that prepare them for life and work in an age of rapid change.

QUICK Facts

510
Total Enrollment

Graduates in the Class of 2022 accepted to **129** colleges and universities



86%
of student-body identifies as Catholic

11:1

Student to Teacher Ratio

30
Bus Stops

\$14,500,000
Awarded in College Scholarships for the Class of 2022



78
Different Grade Schools

45
Zip Codes

16
Average Class Size

No work of charity can be more productive to the good of society than the careful instruction of young women.

— Catherine McAuley, Founder of the Sisters of Mercy



Why MERCY?

Mercy Academy is a Catholic high school that welcomes young ladies of all faith backgrounds. We believe in educating and empowering young women to be successful well beyond their four years of high school. Each student is encouraged to be herself and share her unique views to contribute to classroom collaboration. Our **caring teachers, innovative approach to learning, small class sizes, beautiful campus** and **Christ-centered values** are what set Mercy apart from other schools in the Louisville area.

CARING TEACHERS: Our dedicated teachers love coming to Mercy every day to shape student-learning. They invigorate students to challenge themselves academically and achieve their full potential. Students describe their teachers as "compassionate, friendly, connected, approachable, helpful" and "like they could almost be their friends."

PERFORMANCE-BASED LEARNING: Mercy's innovative approach to learning allows our students to demonstrate their knowledge through hands-on tasks that relate to real-world situations. At the heart of performance-based learning is collaboration between students, as well as between students and teachers. Our students are taught to be critical thinkers who can showcase their knowledge, rather than just reiterate facts and figures, and Mercy provides them with a safe space to self-reflect and continuously improve.

SMALL SCHOOL, BIG OPPORTUNITIES: With a student population of 500, Mercy is able to offer an individualized experience in the classroom while also providing extensive extra-curricular, leadership, travel and athletic opportunities. Our average class size is 16, allowing each student access to resources like digital dissection tables and 3-D printers, and instruction from MIT and Harvard-graduated teachers. Students compete in state, national and international competitions, and take advantage of all Mercy has to offer.

24-ACRE CAMPUS: Mercy's beautiful 24-acre campus is centrally located and provides students with amazing amenities, such as on-site athletic facilities and parking, a STEM Innovation Center that inspires creativity, an achievement center for daily tutoring, a wellness center for breaks from technology, a beautiful chapel to encourage prayer, and so much more. Additionally, our building is designed with carpet in the hallways and classrooms, comfortable furniture and coffee/tea in our learning commons to make each student feel like she is at home.

CHRIST-CENTERED VALUES: Teaching our students to be ethical adults who are accepting, empathetic and compassionate to all is an important part of our focus. By following the values of Jesus and continuing the mission of the Sisters of Mercy, we know that our students will be prepared to enter an ever-changing world with integrity and courage.



Why ALL-GIRLS?

Did you know that graduates of all-girls' schools are six times more likely to consider majoring in math, science and technology and three times more likely to consider engineering compared to girls who attended coed schools?

All-girls' schools are places where girls take center stage. Girls occupy every seat in student council, every spot in the underwater research team, and every position in the math honor society. In fact, every aspect of an all-girls' school – from the classroom to the athletic field to the academic program – is designed for girls. By subtracting boys, an all-girls' education will add opportunities for your student.



Whether she wants to be an astronaut, ambassador, author or attorney, your student needs to know – not just think, but really know, deep down – that there's nothing that can stand in her way. That's the incredibly important message Mercy sends to our students each and every day. We believe this message provides powerful, relevant advantages and creates the best environment for girls to learn, grow and develop.

Learn more about all-girls' schools and our partnership with the International Coalition for Girls' Schools at girlsschools.org.



MERCY'S HOUSE System!

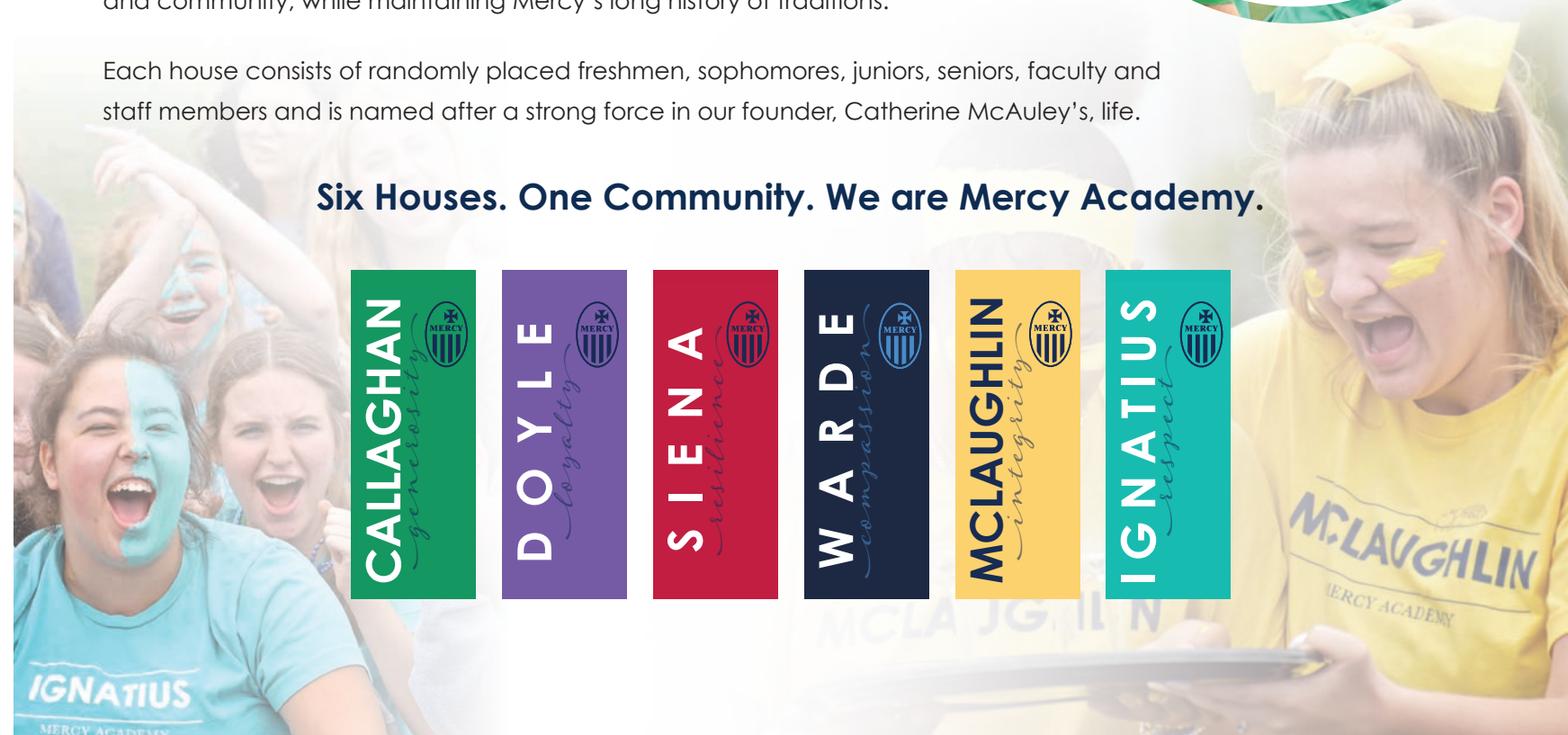
When a student comes into Mercy, she joins a class of young women her age who experience and learn the Mercy traditions alongside of her. These classmates play an integral role in her time at Mercy, but we also know that nurturing relationships across the entire student-body and with faculty and staff members is equally as important for experiencing Mercy to its fullest.

Every Monday, Tuesday, Wednesday and Friday, 15-60 minutes is dedicated for house time. During this time, students gather with their houses to complete various activities that fall under one of four identified categories: education, competition, student business or wellness. House time helps students build relationships, school spirit and community, while maintaining Mercy's long history of traditions.

Each house consists of randomly placed freshmen, sophomores, juniors, seniors, faculty and staff members and is named after a strong force in our founder, Catherine McAuley's, life.



Six Houses. One Community. We are Mercy Academy.



ACADEMIC *Levels*

At Mercy, we develop each student to her greatest potential by providing her with an environment for maximum growth, at a level commensurate with her individual abilities. We offer six academic course levels to benefit students from all levels of learning.

ADVANCED PLACEMENT (AP)	College-level course for students with high abilities and strong desires for challenging work with the potential to earn college credit hours.
DUAL CREDIT (DC)	Advanced coursework that allows students to simultaneously earn high school and college credit through exposure to intellectually demanding tasks and instruction.
ADVANCED	Independent and fast-paced classroom that focuses on conceptualization and critical thinking skills.
HONORS I	Rigorous college-prep curriculum that challenges students considering advanced or AP coursework in the future.
HONORS 2	Individualized college-prep curriculum that challenges students to meet the demands of the 21 st century by focusing on collaboration and problem solving.
ACADEMIC	Highly structured and individualized classroom experience that emphasizes content mastery.



ADVANCED PLACEMENT (AP) CLASSES

Mercy is proud to offer 20 AP classes students can begin taking as early as their sophomore year for the opportunity to earn college credit.

- Art & Design
- Biology
- Calculus AB
- Calculus BC
- Chemistry
- Computer Science Principles
- English Language & Composition
- English Literature & Composition
- French Language & Culture
- Macroeconomics
- Microeconomics
- Music Theory
- Physics 1
- Physics C
- Psychology
- Spanish Language & Culture
- Spanish Literature & Culture
- Statistics
- US Government & Politics
- US History

DUAL CREDIT (DC) CLASSES

Mercy is proud to offer 11 DC classes students can begin taking their junior year to earn college credit.

- Advanced Accounting
- Basic Public Speaking
- Biology
- College Algebra
- English 101
- English 102
- French 3
- Introduction to Law
- Pre-Calculus
- Spanish 3
- Spanish 4

MERCY SCHOLARS

Mercy Scholars is an opportunity for gifted students to continue their studies outside the classroom. The program requires students to maintain a 3.8 GPA and take a minimum of three AP classes. Scholars have opportunities to participate in academic competitions outside of Mercy, research independent topics they are passionate about, and present their findings, explore local museums, participate in round-table discussions, etc. To learn more about Mercy Scholars, please contact Mrs. Abby Kremer at akremer@mercyjaguars.com.

STUDENTS WITH ACCOMMODATIONS

Any student with a learning, medical or physical need has the option to have a custom accommodation plan while at Mercy. By having a structured strategy in place, Mercy is able to help meet the individual needs of each student, supporting her in reaching her full academic and personal potential.

A psychoeducational assessment completed within the last three years is required for an academic accommodation plan. These assessments provide our counselors with the necessary information for developing the unique success plan. Some common accommodations include extended time or quiet space for testing, access to an e-reader, printed materials, etc.

Students with any type of accommodation will work with Mrs. Stephanie McGarry all four years. For more information, please contact Mrs. McGarry at smcgarry@mercyjaguars.com or call (502) 671-2010 ext. 2321.

ACADEMIC SERVICES PROGRAM

This after-school program provides additional academic support to struggling learners in an encouraging and structured environment. Teachers or counselors may refer identified students to our academic interventionist for individualized learning plans. These incorporate personalized learning goals and tutoring services. Parental permission and support are necessary for acceptance into this program. To learn more, please contact Mr. Matt Schaab at mschaab@mercyjaguars.com.



ACT PROGRESS OF A MERCY Student

8TH GRADE YEAR:

Take the high school placement test. Results provide Mercy with data to project an ACT score for your student.



FRESHMAN YEAR:

MAP testing. Results show areas that need academic growth.

SOPHOMORE YEAR:

Full-length practice ACT. Option to participate in TorchPrep ACT Bootcamp – guarantees an increase in your score or you get a refund.



JUNIOR YEAR:

Full-length practice ACT. Option to participate in TorchPrep ACT Bootcamp – guarantees an increase in your score or you get a refund.

SENIOR YEAR:

On average, Mercy students exceed their projected ACT score by three or more points.

STEM PROGRAM

As the nation's first all-girls accredited **STEM** school, Mercy prepares students for an in-demand, male-dominated **STEM** job market by exposing them to content that most do not experience until college.



STEM PROGRAM HIGHLIGHTS:

- Compose independent biology research projects, and travel internationally to perform experiments in the field.
- Conduct forensic investigations, simulate infectious disease testing, and practice genetic screening with DNA equipment.
- Create and program autonomous vehicles capable of executing hypothetical search and rescue missions.
- Debate privacy law while designing, building, and coding fully functional drones.
- Design, develop, and create 3-D-printed therapeutic toys in consultation with pediatric occupational therapists.
- Detect and defend against cybersecurity threats in a secure environment by using a custom-designed-and-built cyber range.
- Explore biomaterials and medical advances by replicating surgical procedures.
- Learn human anatomy, clinical diagnosis and forensic pathology using Mercy's state-of-the-art *Anatomage* digital dissection table.
- Serve as mentors in the community, teaching middle school girls about STEM principles.
- Study next generation prosthetics using 3-D bio-printers and design software.
- Uncover never-before-seen waterways and marine wildlife utilizing submersible robots.

STEM Partners:

- | | | |
|---|--|--|
| <ul style="list-style-type: none"> • Air Force Association • Advanced Renewable Materials Biochemical Engineering Lab • Army Corps of Engineers • Bellarmine University • Bowman Field Air+Space Academy • Dow Corning • Falls of the Ohio State Park • GE Aviation | <ul style="list-style-type: none"> • General Electric Appliances • Girl Scouts of Kentuckiana • J.B. Speed School of Engineering • Kentucky Girls STEM Collaborative • Kentucky Science Center • LMPD Crime Scene Unit • Louisville Gas & Electric • Louisville Metro Office of Performance Improvement & Innovation | <ul style="list-style-type: none"> • Mammoth Cave National Park • McGrath Institute at the University of Notre Dame • Metropolitan Sewer District • National Park Service • Norton Healthcare • University of Kentucky • University of Louisville • UofL Health • Western Kentucky University |
|---|--|--|

FINE Arts

Mercy's **FINE ARTS** department fosters the growth of creative minds with all levels of experience. Our exceptional teachers work one-on-one with each student to improve her skills in 2-D and 3-D art, ceramics, graphic design, theatre arts, choral music and creative writing.

ART PROGRAM HIGHLIGHTS:

- | | |
|--|--|
| <ul style="list-style-type: none"> • Attend and perform at the International Thespian Festival as the designated Kentucky Chapter Select. • Collaborate with classmates to create a permanent mural in the school. • Compete in the annual Derby Art Museum contest, and display winning artwork in public exhibits. • Compose 10-minute original plays to be performed and published by Actors Theatre of Louisville. | <ul style="list-style-type: none"> • Contribute to theatre productions with behind-the-scenes work in set design, costumes and makeup. • Create musical arrangements and accompaniments for theatre and vocal performances. • Participate in a state-wide a cappella competition, and work alongside professional artists. • Perform a self-written and self-directed play at the acclaimed Edinburgh Fringe Festival in Scotland. |
|--|--|





INDOOR:

- Chapel
- STEM Innovation Center
- Sister Prisca Achievement Center
- Wellness Center
- Theatre
- Mac Lab
- Dance Studio
- Two Gymnasiums
- Fitness & Weight Room
- Athletic Training Room
- Softball Batting Cages
- Archery Range

OUTDOOR:

- 24 Acres
- On-Campus Parking
- Brand-New Synthetic Turf Field
- Eight-Lane Rubberized Track
- Bermuda Grass Training Field
- One-Mile Running Course
- Six Tennis Courts
- Softball Field
- Softball Batting Cages
- Home & Away Locker Rooms
- Outdoor Dining
- Outdoor Learning Areas

Facilities

MERCY IS PROUD TO OFFER 15 SPORTS OVER THREE ATHLETIC SEASONS:



Spring:
Lacrosse
Softball
Tennis
Track & Field

Last year, Mercy had **78** multi-sport athletes!



Fall:
Cross Country
Field Hockey
Golf
Soccer
Volleyball

Winter:
Archery
Basketball
Bowling
Cheerleading
Dance
Swimming



MERCY Involvement

Involvement is an integral part of the Mercy experience. Participating in clubs and/or athletic teams allows for students to connect with their classmates outside the classroom. With so many options, there are opportunities for every student, and if there is a club a student would like to start, she can do that too.

Clubs:

- Alive in Mercy
- American Sign Language
- Ambassadors
- Asian Culture Club
- Big Sis/Little Sis
- Book Club
- Class Officers
- Culinary Club
- Diversity Club
- Fashion Club
- Future Business Leaders of America
- Future Problem Solving
- Glee Club
- Governor's Cup
- Growing in Faith Together (GIFT)
- Intramural Sports
- International Thespian Society
- Jags Animal Care Society
- Jaguar Comics
- Knitting & Crocheting
- KUNA
- KYA
- Liturgy Planning Committee
- Make Mercy Real
- Mercy Environmental Ambassadors
- Mercy Scholars
- Mock Trial
- Mu Alpha Theta (Math Honor Society)
- National Art Honor Society
- National Business Honor Society
- National English Honor Society
- National French Honor Society
- National Honor Society
- National Science Honor Society
- National Spanish Honor Society
- Outdoor Club
- Peer Leaders
- Pep Club
- Photography Club
- Quick Recall
- Retreat Leaders
- Rho Kappa (Social Studies Honor Society)
- Student Council
- Table Top Club
- Theatre Productions
- TikTok Club
- Underwater Research Team
- Walk Committee



Oh, the Places You'll Go!



TRAVEL Opportunities

Mercy offers many opportunities for our students to become global learners. Travel experiences are offered for those interested in pursuing studies, service, athletics, art and fun experiences outside of Louisville.

SENIOR NEW YORK TRIP

Mercy seniors are invited to spend a jam-packed weekend in New York with their classmates to kick off their final year together at Mercy. They visit the Statue of Liberty, Times Square, NBC Studios, 9/11 Museum, St. Patrick's Cathedral and more. It's a trip that they continue to talk about for years after they have graduated.

ARGENTINA EXCHANGE PROGRAM

Students interested in the Spanish language and culture are invited to participate in this once-in-a-lifetime experience where they host a student from Argentina for a month and then go to live with her in Buenos Aires for a month. During this direct exchange, students attend our sister school, Santa Ethnea, and explore the city with their host, where they form unbreakable bonds and lifelong memories.

IRELAND & ENGLAND

Students are invited to explore Ireland and England for an 11-day European adventure. They visit the Blarney Castle, Ring of Kerry, St. Patrick's Cathedral, Shakespeare's birthplace, Big Ben and so much more. This is a perfect trip for those looking to be inspired by architecture, countryside and art, all while exploring the beauty of Europe.

COSTA RICA RESEARCH TRIP

Mercy students have the opportunity to embark on a 10-day, scientific adventure to Costa Rica. There, they design and implement their own unique research projects, all while exploring their beautiful surroundings. This in-depth and hands-on research opportunity is encouraged for those interested in continuing their studies in the field, working side-by-side with professional scientists.

SCOTLAND - THEATRE INTERNATIONAL EXPERIENCE

Students involved in Mercy's theatre department are invited to participate in the world-renowned Fringe Festival in Edinburgh, Scotland. This is the world's largest international theatre festival with the American High School Theatre Festival, and Mercy is proud to have been selected to perform for the second time! Students experience the transformation of the whole city to a stage. Visitors can view performances everywhere from playgrounds to conference rooms and from city parts to churches, as 3,000 different performers showcase their talents.

STUDENT Success

GUIDANCE COUNSELORS & THERAPY DOG

Mercy's counseling department is structured to assist students in all stages of their high school development beginning with a full-time freshman transition counselor. First-year students meet with this counselor throughout the year to learn helpful organizational tools and study skills, as well as obtain any wellness support they need. As a sophomore, students are then assigned a counselor who will support their academic and wellness needs for the remainder of their time at Mercy. By having a consistent counselor, students are able to cultivate rapport and connection with a trained adult over the course of three years.

The counseling team also includes a full-time college and career advising counselor who helps students reach their academic and professional goals beyond Mercy. She helps students explore options for admission to and enrollment at colleges/universities across the state, region and nation, while also providing guidance for career exploration and readiness.



Ryder is Mercy's hypoallergenic, certified therapy dog. He is part of our counseling team, and students are encouraged to pet him as a way to relieve stress, calm nerves, and bring them happiness.

SISTER PRISCA ACHIEVEMENT CENTER (PAC)

The PAC provides support to all students in every subject area and at any academic level. It is staffed with expert interventionists and is designed to model collegiate learning and growth resource labs. The PAC is equipped with modern resources to meet the unique needs of each learner. Last year alone, the PAC completed 1,255 appointments with students to help them succeed in their coursework. It is open before and during school every day, and all students are encouraged to visit during their study blocks.



WELLNESS CENTER

The Wellness Center is a tech-free space designed for short-term stress-reducing practices. Over the past few years, it has become increasingly apparent that students struggle with anxiety, stress and other factors which can keep them from focusing in the classroom. In response to this, Mercy designed a wellness center to allow students a space for stress management and self-meditation. This relaxing space offers many types of resources for mindfulness, self-reflection and self-coping skills.

SERVICE-LEARNING AND LEADERSHIP PROGRAM

With Mother Catherine McAuley as their model, Mercy students are transformed into empowered, active citizens, leaders and life-long servants of Christ through our nationally recognized, four-year service-learning and leadership program. Students are called to be leaders who act for justice in our community through **direct action**, by addressing immediate needs in our community, and **social action**, by addressing root causes of injustice to bring about long-term systemic change.

FRESHMAN YEAR, students participate in four days of immersion experiences designed to uncover causes and potential solutions to issues that plague our society.



AS SOPHOMORES, they partner with local agencies over eight weeks to learn the stories of those most vulnerable in our community in order to better understand how their needs can be directly addressed. Students learn that forming relationships is the foundation of true justice work.

JUNIORS learn about the complex nature of systems, social analysis and the difficulties of systemic change. They tour local agencies focused on an area of injustice to examine how they approach the root causes of the issue. Then, students meet with legislators in Frankfort to discuss how to bring about the long-term change necessary for our community to thrive.



OUR SENIORS are equipped with all of the tools needed to create a lasting impact in the community by developing and implementing action plans specifically focused on the Critical Concerns of the Sisters of Mercy: immigration, racism, nonviolence, earth and women. Through a collaborative approach, students practice real-world leadership skills in strategic planning, needs assessment, marketing and financial planning to create a semester-long service project.



RETREATS

Our retreat program provides each student with a unique opportunity to share her faith in a trusting Christian community. She enriches her awareness of God, self, family and relationships.

Freshman year, all students participate in retreat as a part of their Freshman Activities Days. Each freshman reflects on who she is at this moment in time, past influences and who she hopes to become as a "Mercy girl".

Sophomores focus on their gifts, skills, talents and passions. They learn how these are their God-given superpowers and, with these gifts, they play a part in changing the world for the better.

Juniors explore the "home" and "family" they have made for themselves through their valued relationships. Each student learns how her values are intertwined with her family of origin and the broader global family.

Senior year, students consider their relationship with God as they think about entering into the adult world. Each senior looks at her relationship to God, the challenges and obstacles of this kind of relationship, and how her relationship with God is lived out as a Woman of Mercy.



TUITION AND FEES

TUITION PAYMENT PLANS

Tuition is \$14,200 for the 2022-2023 school year.

**Tuition and fees for 2023-2024 will be released in March of 2023.*

# Of Payments	Date	Payment Amount	FACTS Annual Fee
1	July 5	\$14,200	\$0
2	July 5 February 5	\$7,100	\$0
3	July 5 October 5 February 5	\$4,734	\$50
11	Choose 5 th or 20 th of the month June-April	\$1,291	\$50

*Please Note: There is no interest charged on any of our tuition payment plans.

FEES FOR THE 2022-2023 SCHOOL YEAR

Registration Fee	\$150
Athletic Fee (Athletes Only) – Paid once each year	\$150
Books – Purchased online through MBS or iTunes	

IPAD DIGITAL LEARNING ENVIRONMENT

Mercy requires all students to purchase an iPad through the school during their first year. The cost of the iPad is as follows:

iPad with four-year AppleCare Protection	\$558
Deposit paid at registration	(\$100)
Balance: paid with tuition payments	\$458

- 1 Payment: add \$458 to payment
- 2 Payments: add \$229 to each tuition payment
- 3 Payments: add \$152.67 to each tuition payment
- 11 Payments: add \$41.64 to each tuition payment

*After the iPad balance is paid in full, the student owns her iPad.

FINANCIAL AID AND SCHOLARSHIPS

SISTERS' DISCOUNT

Families with more than one student attending Mercy at the same time receive \$2,000 off the oldest student's tuition.

NEED-BASED AID

Tuition Grant Money:

This pool of money comes from the Mercy Fund and special fundraising events.

Mercy Day Scholarships:

Incoming and current students can apply for one of our 41 Mercy Day Scholarships. They are awarded in May for the upcoming school year and are based on financial need.

MERIT-BASED SCHOLARSHIPS

Placement Test Scholars:

Students who obtain high scores on the high school placement test are eligible to receive a four-year renewable scholarship.

- 1st place: \$3,000
- 2nd place: \$2,500
- 3rd place: \$2,000
- All students in the 90th percentile: \$1,000

HOW TO APPLY FOR FINANCIAL AID:

- 1 Complete the FACTS financial aid form at mercyacademy.com/tuition.
- 2 Register your student to attend Mercy Academy.
- 3 Receive your financial aid notification via email in March.

If you have any questions, please contact Emily McCullough, Director of Admissions, at emccullough@mercyjaguars.com.

Steps to ENROLLMENT

1 SCHEDULE A SHADOW VISIT

Visiting Mercy is a great way for a student to experience our family-like atmosphere in a spacious and modern campus. During a shadow visit, she will meet students and see our uniquely designed classrooms, STEM innovation center, state-of-the-art theatre, on-campus athletic facilities and more. Eighth graders are invited to shadow in the fall and seventh graders in the spring. Scan this QR code to schedule your visit.



2 ATTEND OPEN HOUSE

Join us at our Open House on **Sunday, November 13** between **1:00 and 4:00 p.m.** This is a wonderful opportunity to see our campus, meet current students, and speak with our faculty, administrators and coaches.

3 TAKE THE HIGH SCHOOL PLACEMENT TEST

All eighth graders who wish to attend Mercy take the placement test on **Saturday, December 11** at **9:00 a.m.** Students should come to Mercy with two #2 pencils for the test.

4 RECEIVE AN ACCEPTANCE LETTER

After Mercy receives the placement test scores and information from middle schools, a letter regarding acceptance is mailed on **Tuesday, February 7.**

5 REGISTER TO BE A JAGUAR!



MEET OUR ADMISSIONS TEAM!

Email admissions@mercyjaguars.com
or call **(502) 671-2010** with any admissions questions.

Emily McCullough

Director of Admissions

Emily is available to guide each Future Jaguar family through their entire enrollment process. She answers any questions about tuition and financial aid, the registration process and the overall transition to high school.

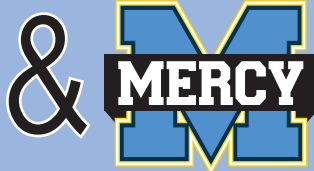


Paige Stewart

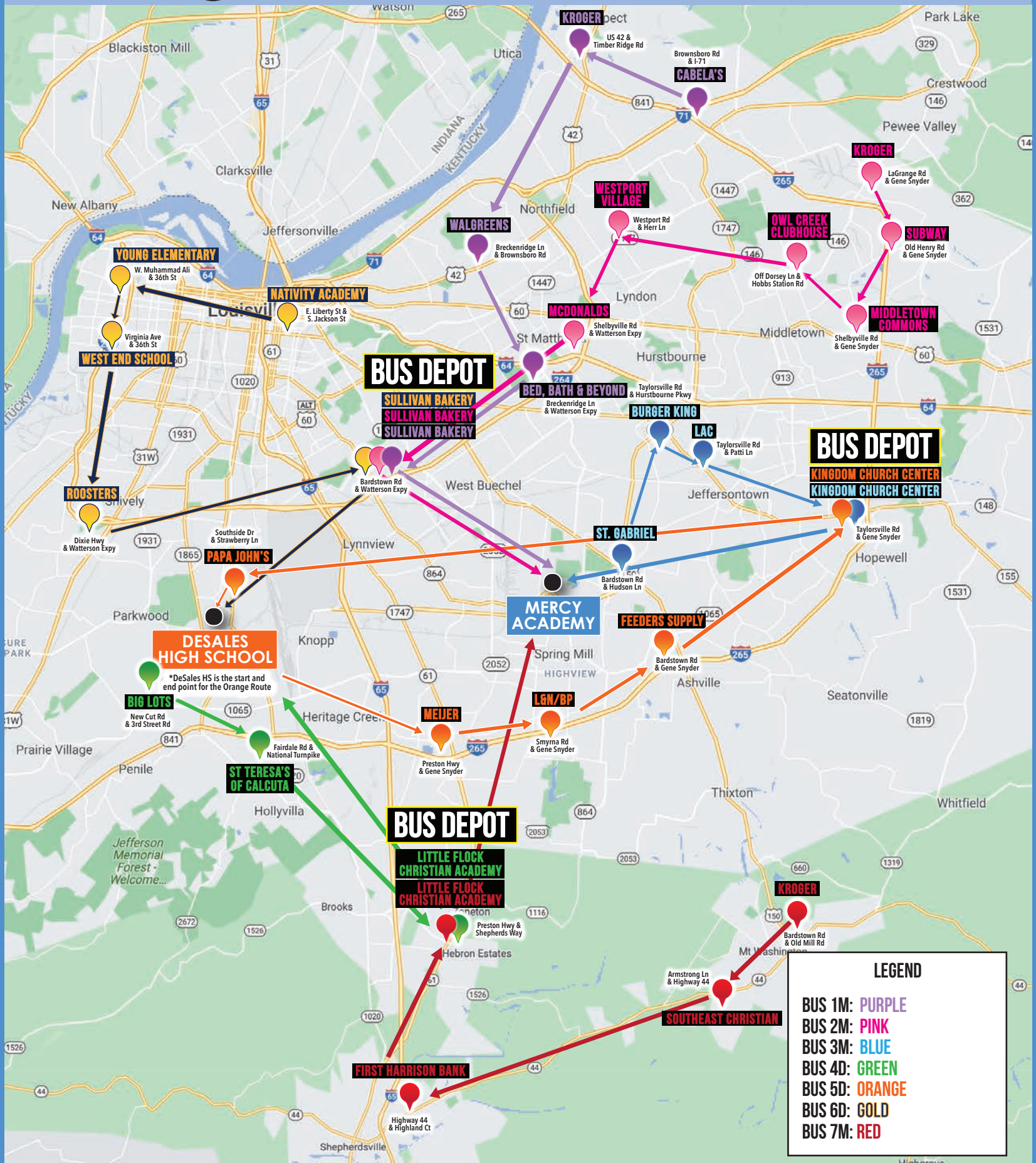
Enrollment Coordinator

Paige works with each Future Jaguar student to help her know if Mercy is the right fit. She introduces the Future Jaguar to current students and teachers, as well as answers any questions she may have about her Mercy experience.





EXPRESS



*TO FIND THE ADDRESSES FOR EACH STOP, PLEASE VISIT MERCYACADEMY.COM/BUS OR DESALESHIGHSCHOOL.COM/TRANSPORTATION