



# JUNIOR HIGH SCHOOL

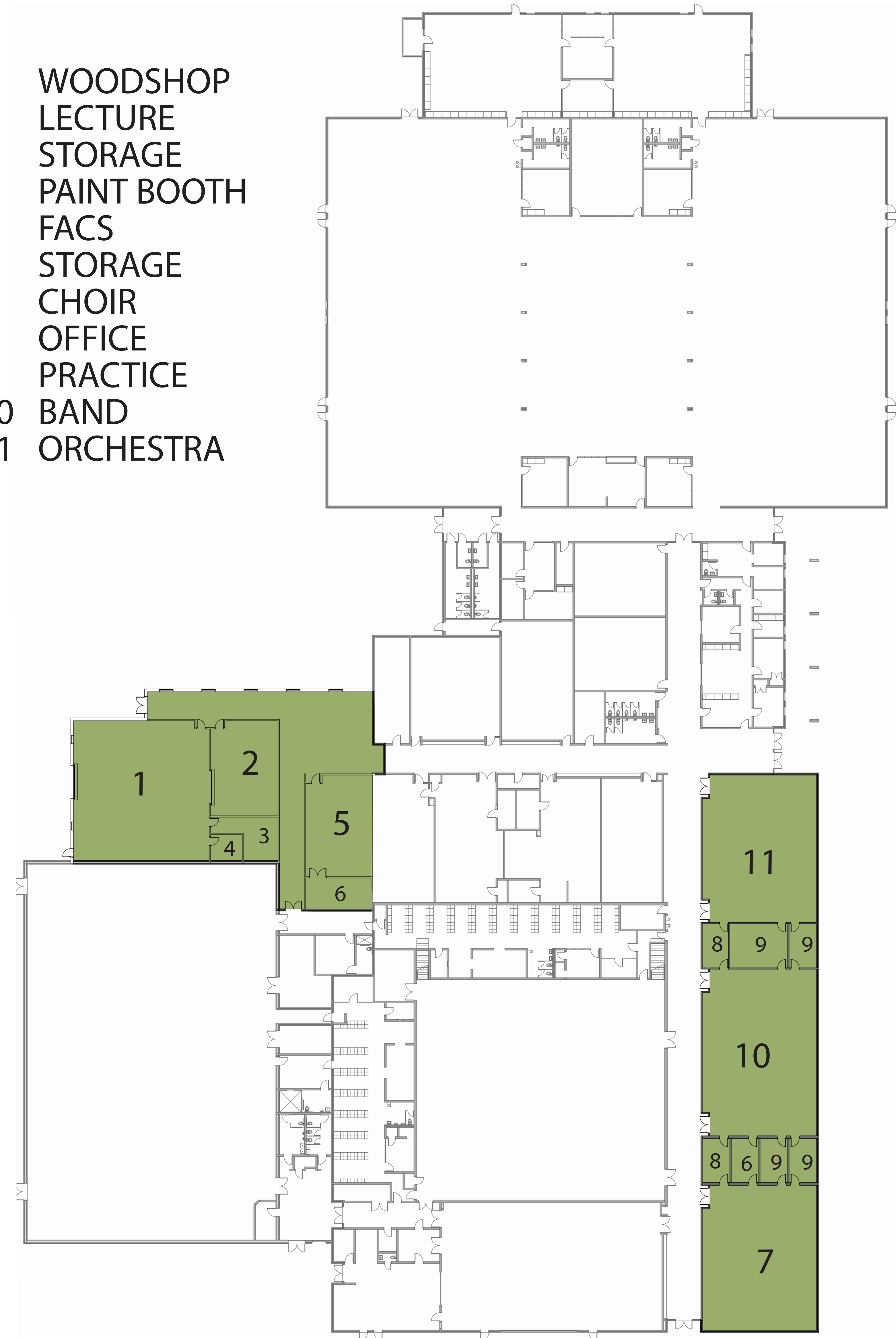
MUSIC ROOM



EXTERIOR



- 1 WOODSHOP
- 2 LECTURE
- 3 STORAGE
- 4 PAINT BOOTH
- 5 FACS
- 6 STORAGE
- 7 CHOIR
- 8 OFFICE
- 9 PRACTICE
- 10 BAND
- 11 ORCHESTRA



1" = 20'-0" ⌚