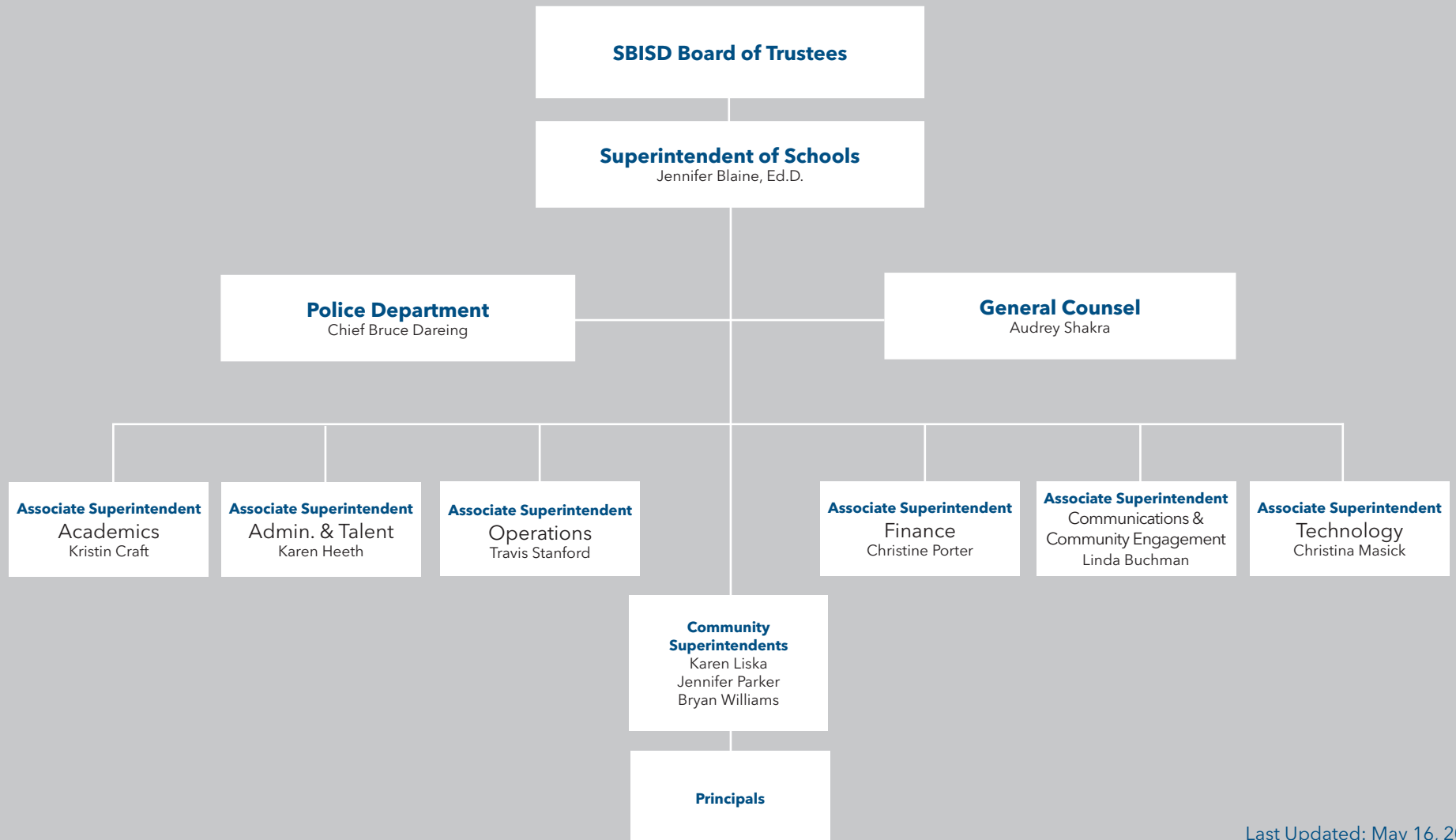




## Spring Branch Independent School District





## Spring Branch Independent School District ACADEMICS

### Superintendent of Schools

Jennifer Blaine, Ed.D.

### Community Superintendents

Karen Liska, Jennifer Parker & Bryan Williams

### Associate Superintendent Academics

Kristin Craft, Ed.D.

### Executive Director of Curriculum & Instruction

Annie Wolfe, Ed.D.

### Executive Director of Assessment & Compliance

Keith Haffey, Ed.D.

### Executive Director of Student Support Services

Lance Stallworth, Ed.D.

### Executive Director of Postsecondary Outcomes, Counseling & Responsive Services

Tyra Walker

**Advanced  
Academic Studies**  
Tracy Scholz

**Educational Technology**  
Ashley May

**Research & Evaluation**  
Mike Thomas

**Career & Technical  
Education**  
Christina Rice-Immumwen

**Guidance & Counseling**  
Vacant

**Multilingual**  
Aylin Martinez

**Library & Media Services**  
Lisa Stultz

**Student  
Evaluation & Assessment**  
Nikki Jansky

**Intervention Services**  
Julie Baggerly

**Mathematics**  
Stacey Weirich

**Fine Arts**  
Houston Hayes

**Grants**  
Julie Hodson

**Special Education**  
DeaAnn Baker

**Science**  
Rhoda Goldberg

**Health Fitness**  
Leslie Wylie

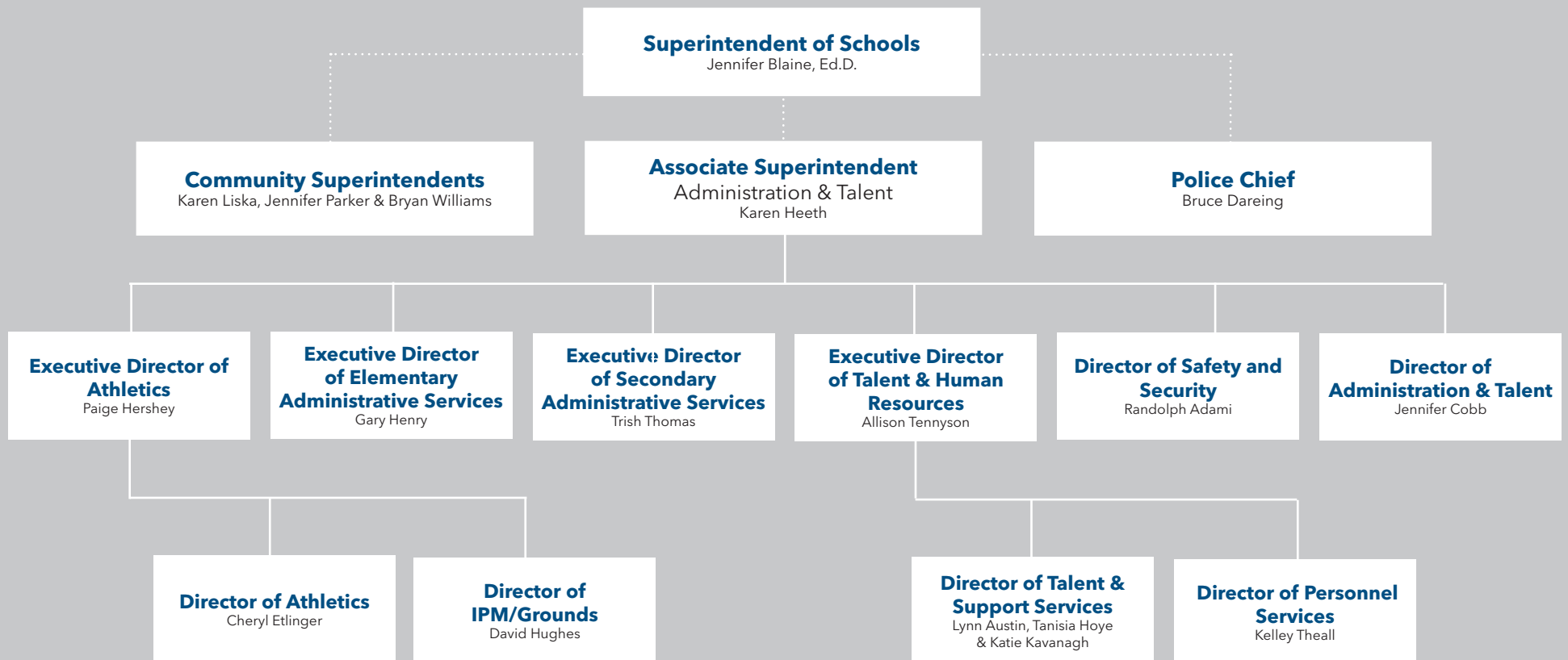
**Secondary Programming**  
Terry Estes

**Humanities**  
Joyce Evans

**PreK & Early Childhood**  
April Falcon-Blanco



## Spring Branch Independent School District ADMINISTRATION & TALENT





**Spring Branch Independent School District**  
**COMMUNICATIONS AND**  
**COMMUNITY ENGAGEMENT**

**Superintendent of Schools**

Jennifer Blaine, Ed.D.

**Associate Superintendent**

Communications & Community Engagement

Linda Buchman

**Director of Communications**

Melissa Wiland

**Director of Community Engagement**

Abby Walker



## Spring Branch Independent School District FINANCIAL SERVICES

### Superintendent of Schools

Jennifer Blaine, Ed.D.

### Associate Superintendent

Finance  
Christine Porter

**Director of Purchasing  
& Central Warehouse**  
Rick Gay

**Controller**  
David Bender

**Director of Accounting**  
Tera Harris

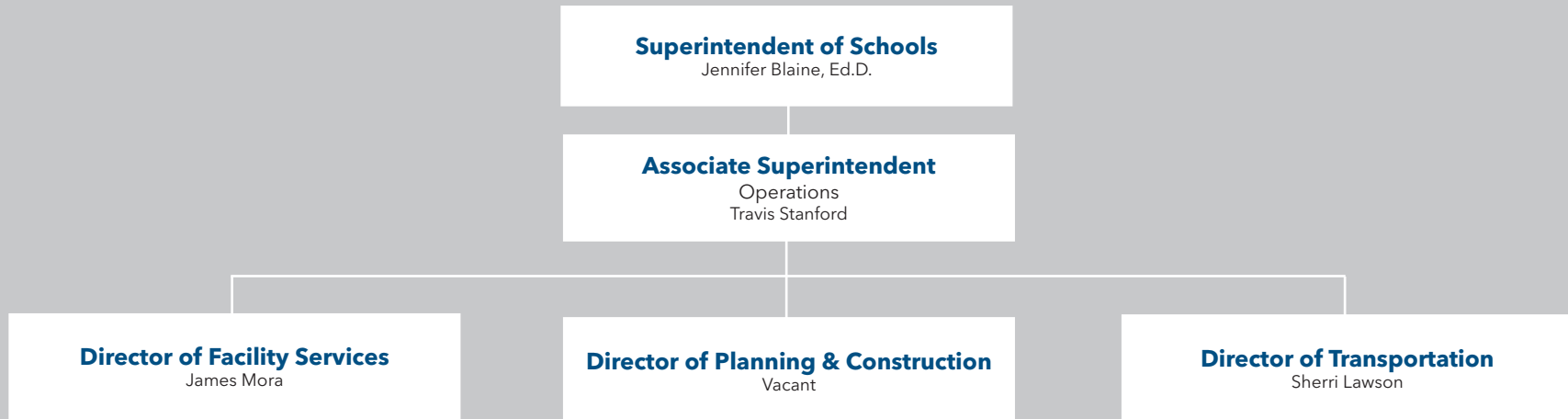
**Director of Child  
Nutrition Services**  
Michael Francis

**Director of External  
Funding & Compliance**  
Lawanda Coffee

**Tax Assessor Collector**  
Elizabeth Ruiz



## Spring Branch Independent School District OPERATIONS





## Spring Branch Independent School District TECHNOLOGY

