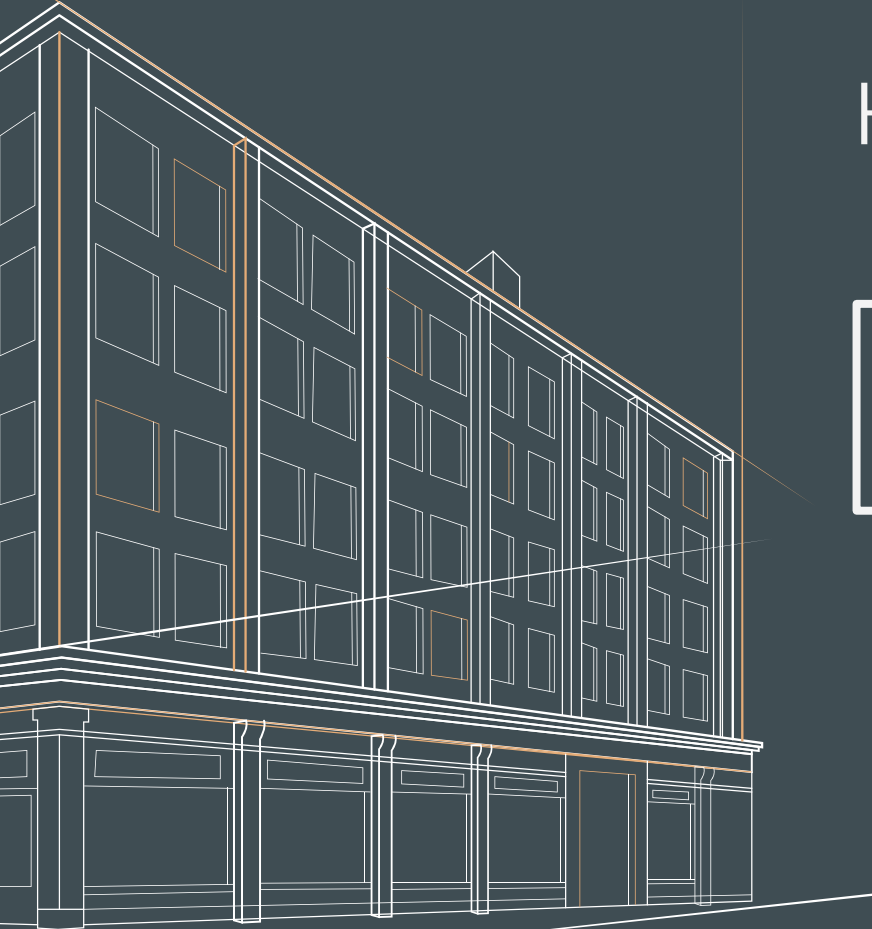
The background features a dark blue field with various geometric elements in orange and white. These include circles of different sizes, some filled with a grid of dots, hexagons, and triangles. Some shapes are solid, while others are outlines. Dotted lines and thin white lines also crisscross the space. The overall aesthetic is modern and technical.

# District 80 Facilities Plan June 2022

# District 80 Historical Data

James J. Giles School was originally constructed in 1929 and has been expanded six times with the construction of additions in 1949, 1953, 1959, 1961, 1965 and finally in 2001.

John V. Leigh School was originally constructed in 1956 and has been expanded six times with the construction of additions in 1958, 1959, 1963, 1967, 1997 and finally in 2006.



# District 80

## Funding Sources



# Bond Proceeds

Year	Project	Location	Status	Budget	Actual Cost
FY22	Asbestos Abatement 2021	Giles and Leigh	Complete	\$100,000	<b>\$94,854.85</b>
FY22	A/C in computer room	Giles	Needs to be installed	\$6,000	
FY22	In-house frequency drive replacement/HVAC repair	Giles and Leigh	Complete	\$15,000	<b>\$9,160.00</b>
FY22	BAS HVAC Controls Upgrade	Giles and Leigh	Complete	\$188,732	<b>\$174,866.43</b>
FY22	Chiller Phase I	Giles and Leigh	Complete	\$70,000	<b>\$46,847.36</b>
FY23	Asbestos Abatement 2022	Giles and Leigh	Scheduled July 22	\$100,000	
FY23	RPZ Installation	Giles and Leigh	Preparing prints	\$12,000	
FY24	Plumbing Replacement	Giles and Leigh	Planning stage	\$200,000	
FY24	Leigh Preschool Phase 1 and 2	Leigh	Pre-planning stage	\$400,000	

# Site and Construction Capital Outlay

Year	Project	Location	Status	Budget	Actual Cost
FY22	Science/STEAM Labs renovation	Giles	Complete	\$30,000	<b>\$30,000</b>
FY22	Wall between 211/213	Leigh	Complete	\$2,000	<b>\$4,000</b>
FY22	Miscellaneous Exterior Repairs	Giles and Leigh	Complete	\$25,000	<b>\$25,000</b>
FY22	Sealcoating	Giles and Leigh	Complete	\$22,950	<b>\$22,950</b>
FY23	Classroom Updates	Giles and Leigh	Beginning Study	\$200,000	
FY23	Building Beautification	Giles and Leigh	Beginning Study	\$20,000	
FY23	NE Exterior Wall Repair	Giles	Planning stage	\$10,000	
FY23	Media Center renovation	Giles	Began work	\$40,000	

# Site and Construction Capital Outlay

Year	Project	Location	Status	Budget	Actual Cost
FY23	Leigh Office Door	Leigh	Planning stage	\$2,000	
FY23	Giles Office renovation	Giles	Planning stage	\$5,000	
FY23	Lunchroom Ceiling	Leigh	Planning stage	\$4,000	
FY23	Lunchroom LED Lighting	Leigh	Planning stage		<b>ComEd Reimbursement</b>
FY23	Limestone facade panels	Leigh	Planning stage		
FY24	ADA Washrooms/Locker Area	Giles	Pre-planning stage		
FY24	Nurse Station/ Washroom	Leigh	Pre-planning stage		
FY24	Lunchroom Bathrooms	Leigh	Pre-planning stage		

# Life Safety

Year	Project	Location	Status	Budget	Actual Cost
FY22	Fire Alarm Modifications	Giles and Leigh	Complete	\$21,753	<b>\$21,753</b>
FY23	Plumbing Replacement	Giles and Leigh	Planning		
FY	Chillers Phase 2	Giles	Pre-planning stage		
FY	Miscellaneous Life Safety	Giles and Leigh	Planning stage	\$100,000	
FY	Plans for Miscellaneous Life Safety Plumbing replacement	Giles and Leigh	Planning stage	\$40,000	
FY	Chiller Phase 3	Giles and Leigh	Pre-planning stage		
FY	Chiller Phase 4	Leigh and Leigh	Pre-planning stage		

# Grants and Donations

	Year	Project	Location	Status	Budget	Actual Cost
Maintenance Grant	FY20	Door project	Giles and Leigh	Complete	\$50,000 Match	<b>\$43,000</b>
Donation	FY22	STEAM/Science Lab Materials	Giles	Complete	SF Donation	<b>\$0.00</b>
Maintenance Grant	FY22	Chillers - phase 1	Giles and Leigh	Complete	\$50,000 Match	<b>\$50,000</b>
Donation	FY22	Electronic Signage	Giles and Leigh	Complete	NPT Donation	
Donation	FY22	Secure Entrance	Leigh	Complete	NSF Donation	
Donations	FY23	Secure Gates	Giles and Leigh	Planning Stage	Possible donation	
ESSER Grant	FY23	Media Center Furniture	Giles	Ordered	\$50,000	<b>\$51,000</b>
Donation	FY24	Preschool Playground	Leigh	Pre-Planning	Possible donation	





# Questions

