

How to Spot Symptoms of **Acute Flaccid Myelitis** in Your Child.

Acute flaccid myelitis, or AFM, is an uncommon but serious condition that affects the nervous system.

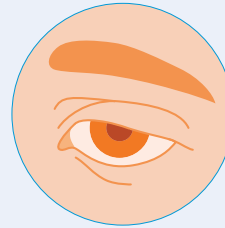
Seek medical care right away if your child has any of these symptoms.

The Most Common Symptom of AFM

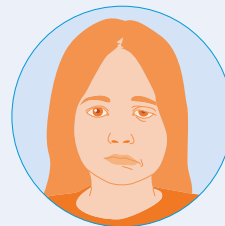


Sudden arm or leg weakness

Some People May Experience



Difficulty moving the eyes or drooping eyelids



Facial droop



Difficulty swallowing or slurred speech

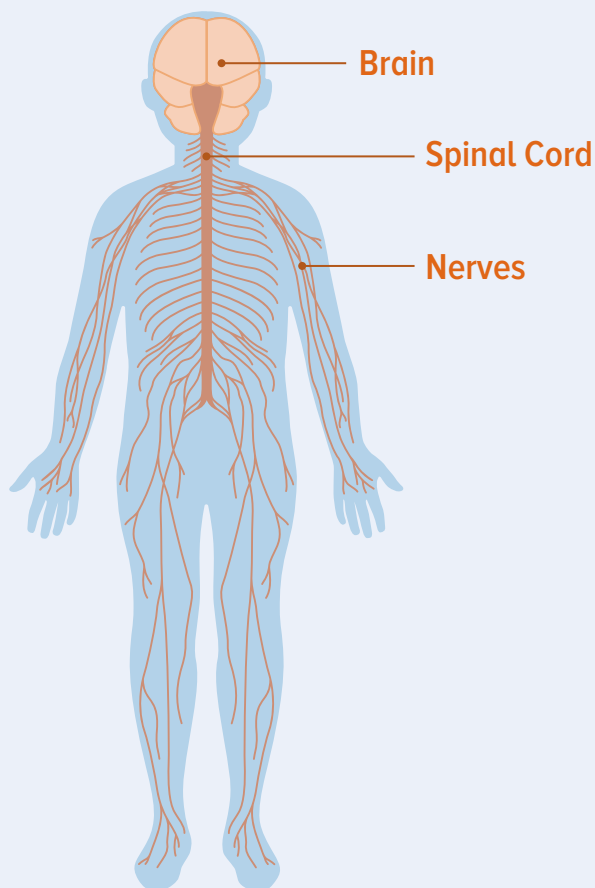


Pain in the arms or legs



Pain in the neck or back

The Nervous System



Centers for Disease Control and Prevention
National Center for Immunization and Respiratory Diseases

www.cdc.gov/acute-flaccid-myelitis