

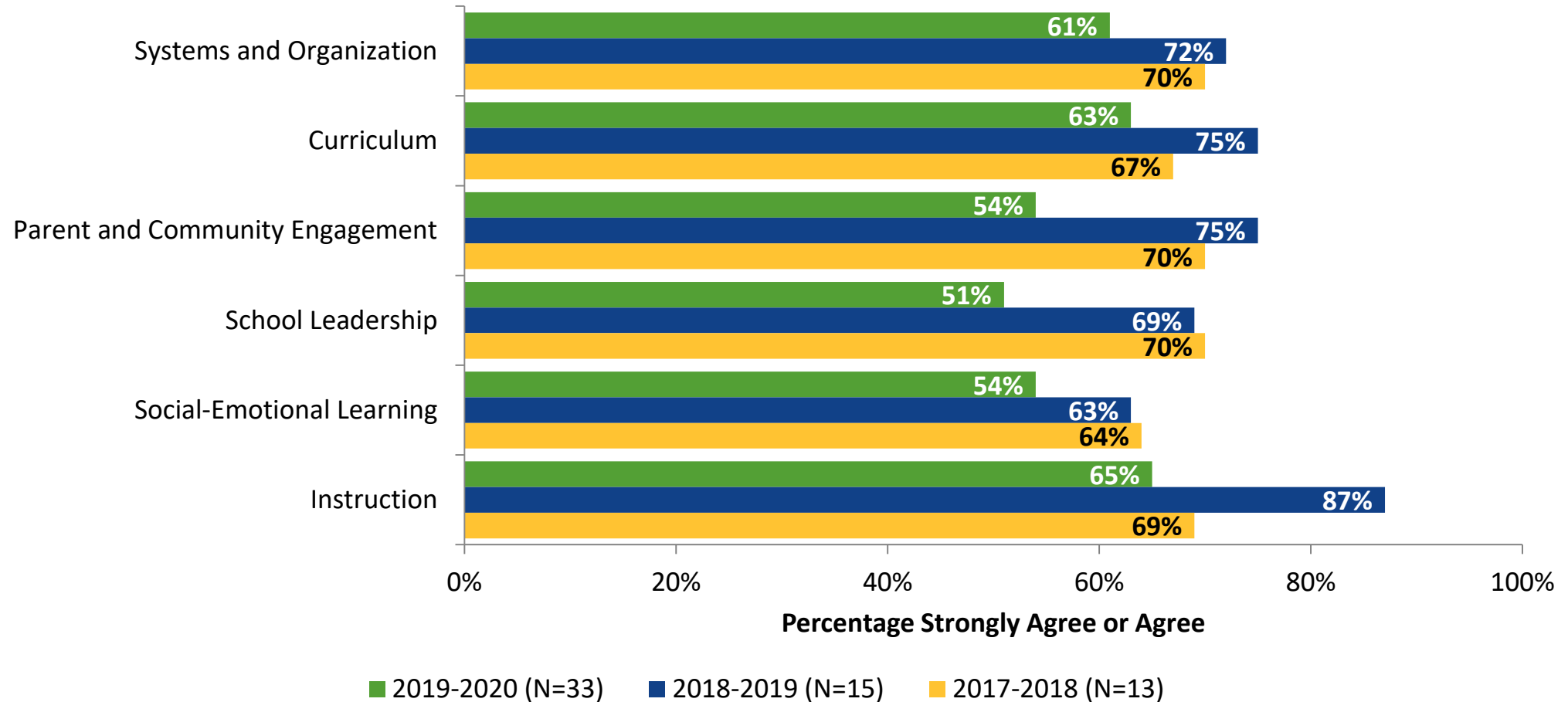
# DTSDE Survey for Parents: Cecil H. Parker Elementary School

## Results

School Year: 2019-2020



# DTSDE Tenets: Comparison Over Time



Answer options: Strongly Disagree, Disagree, Agree, Strongly Agree, Don't Know  
Note: This graph shows Strongly Agree or Agree responses for all items within each dimension.

# Highest Ranking Indicators

---

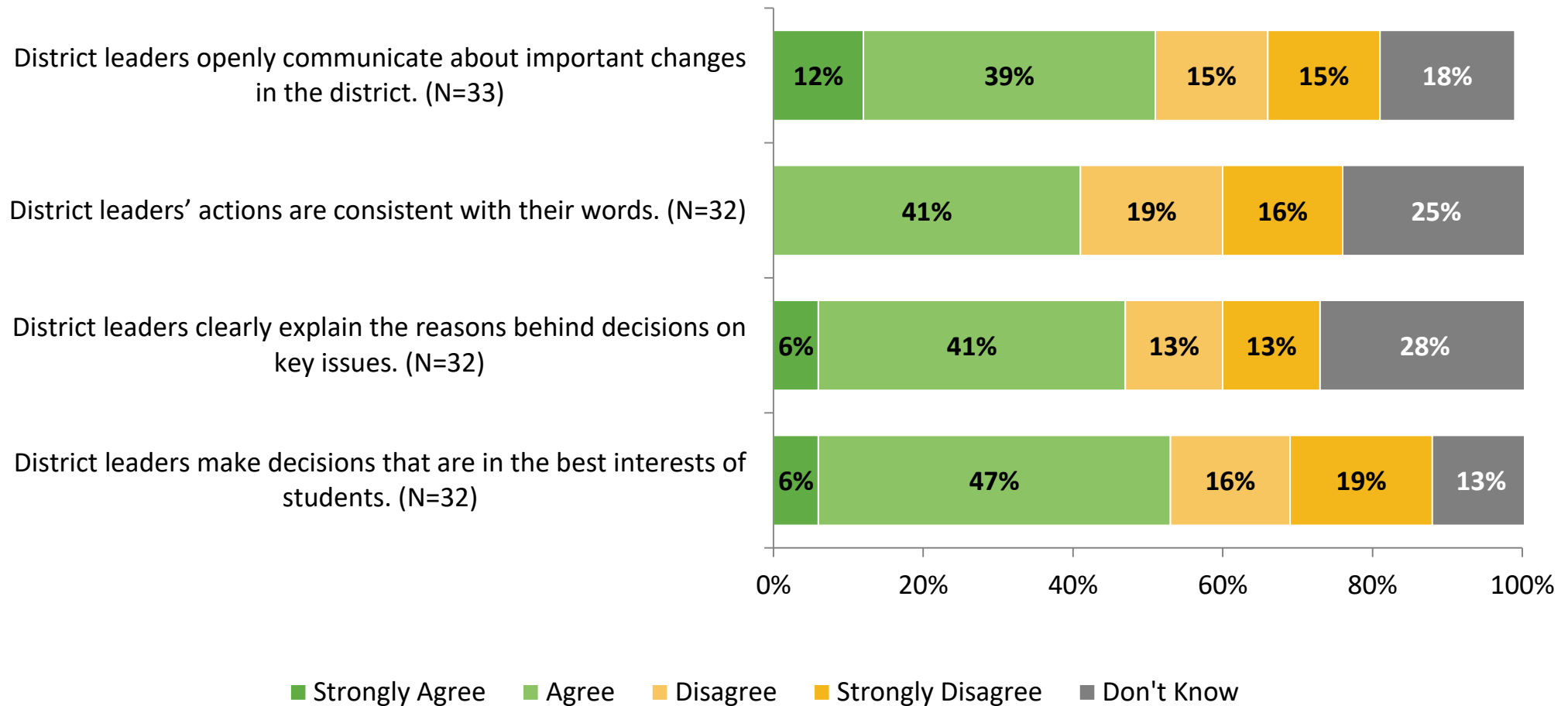
Survey Item	Percentage Strongly Agree or Agree (%)	DTSDE Tenet
My child has access to computers and the Internet at school for learning.	91%	Systems and Organization
I feel welcome in my child's school.	79%	Parent and Community Engagement
My child is accepted in this school.	76%	Social-Emotional Learning
Teachers provide useful information about how to help my child do well in school.	76%	Instruction
My child is provided with the necessary learning materials.	73%	Systems and Organization

# Lowest Ranking Indicators

Survey Item	Percentage Strongly Disagree or Disagree (%)	DTSDE Tenet
Students do not threaten and/or bully each other.	70%	Social-Emotional Learning
This school offers my child a variety of extracurricular activities.	48%	School Leadership
Staff members are open about school issues and decisions that impact my family.	42%	Parent and Community Engagement
My child is being prepared to do well in the next grade or after graduation.	39%	Curriculum
I understand how grades are assigned.	39%	Curriculum

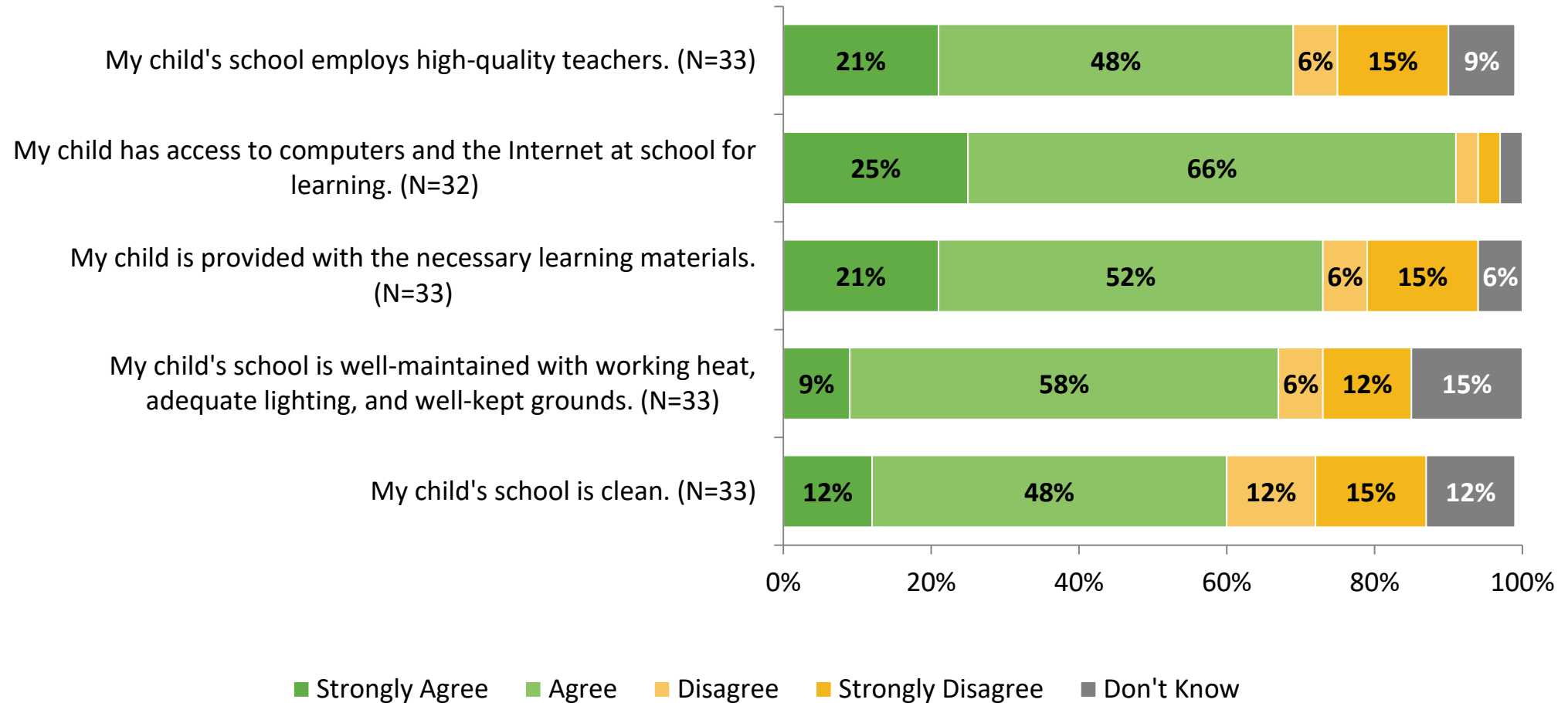
# Systems and Organization

How strongly do you agree or disagree with the following statements?



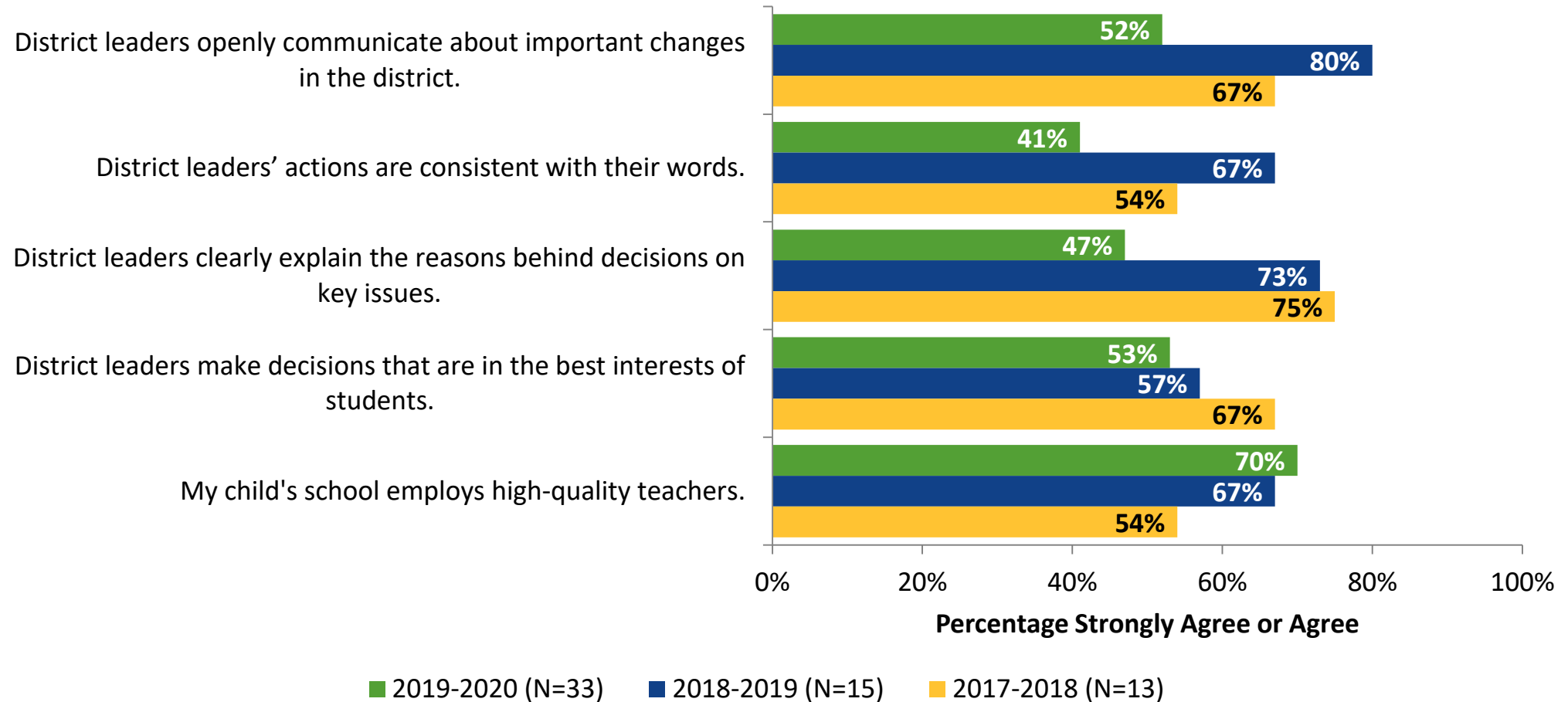
# Systems and Organization (Continued)

How strongly do you agree or disagree with the following statements?



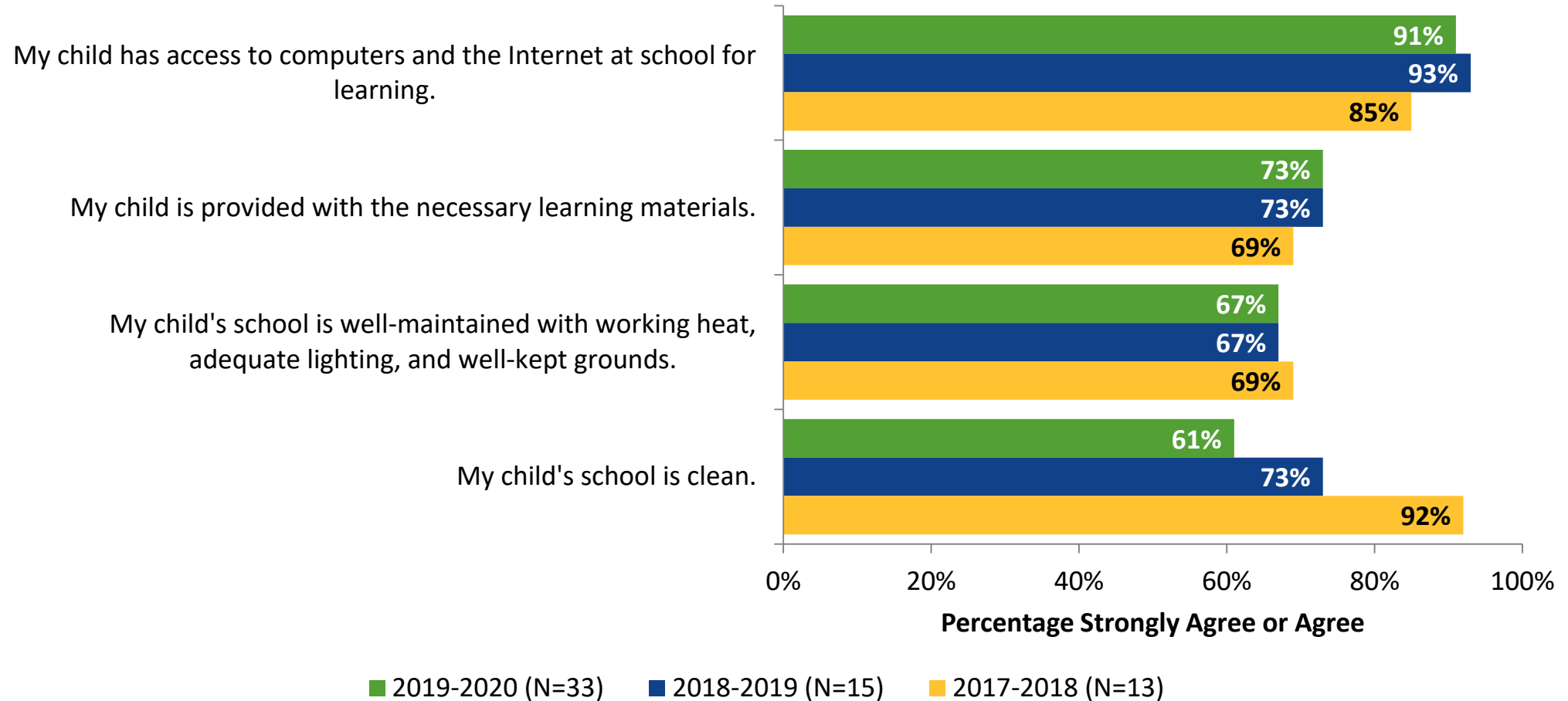
# Systems and Organization: Comparison Over Time

How strongly do you agree or disagree with the following statements?



# Systems and Organization: Comparison Over Time (Continued)

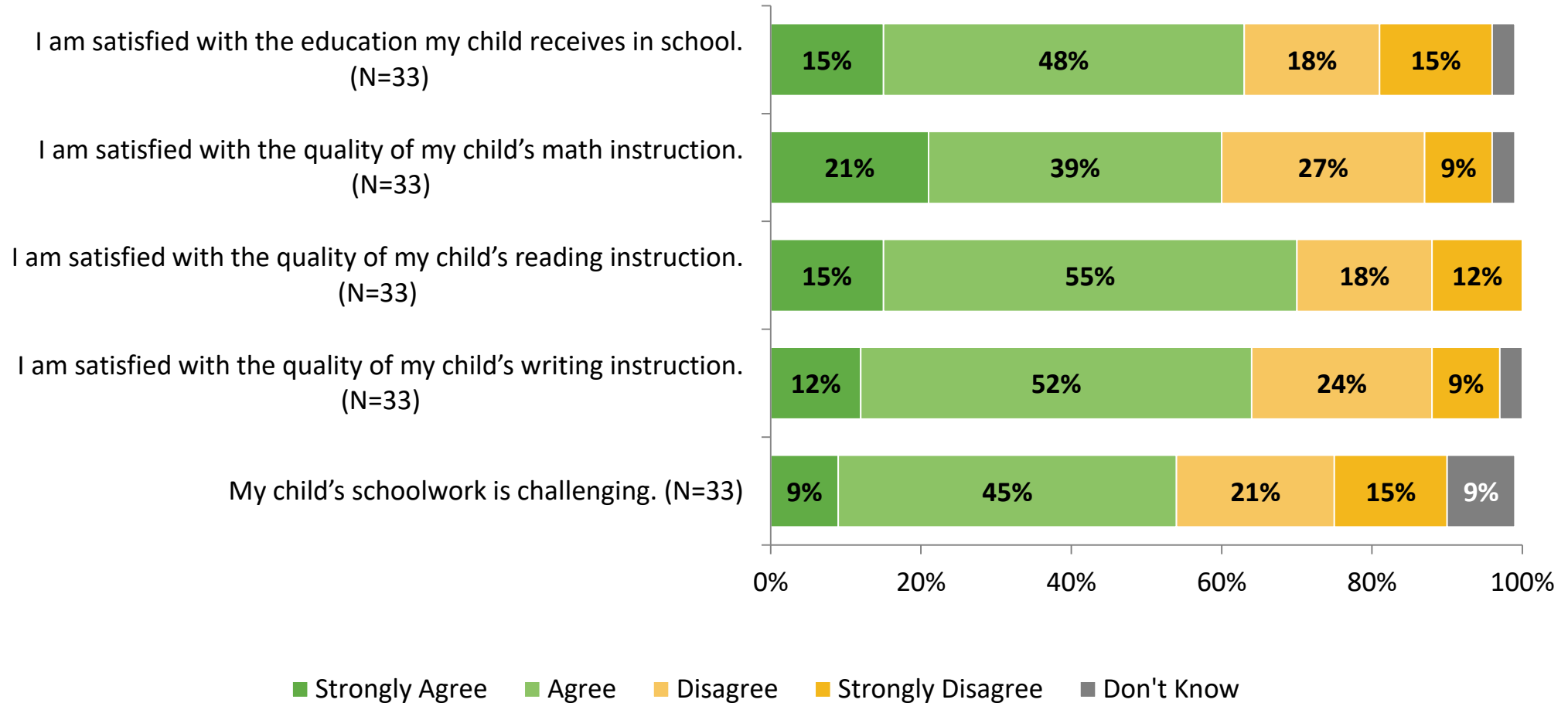
How strongly do you agree or disagree with the following statements?





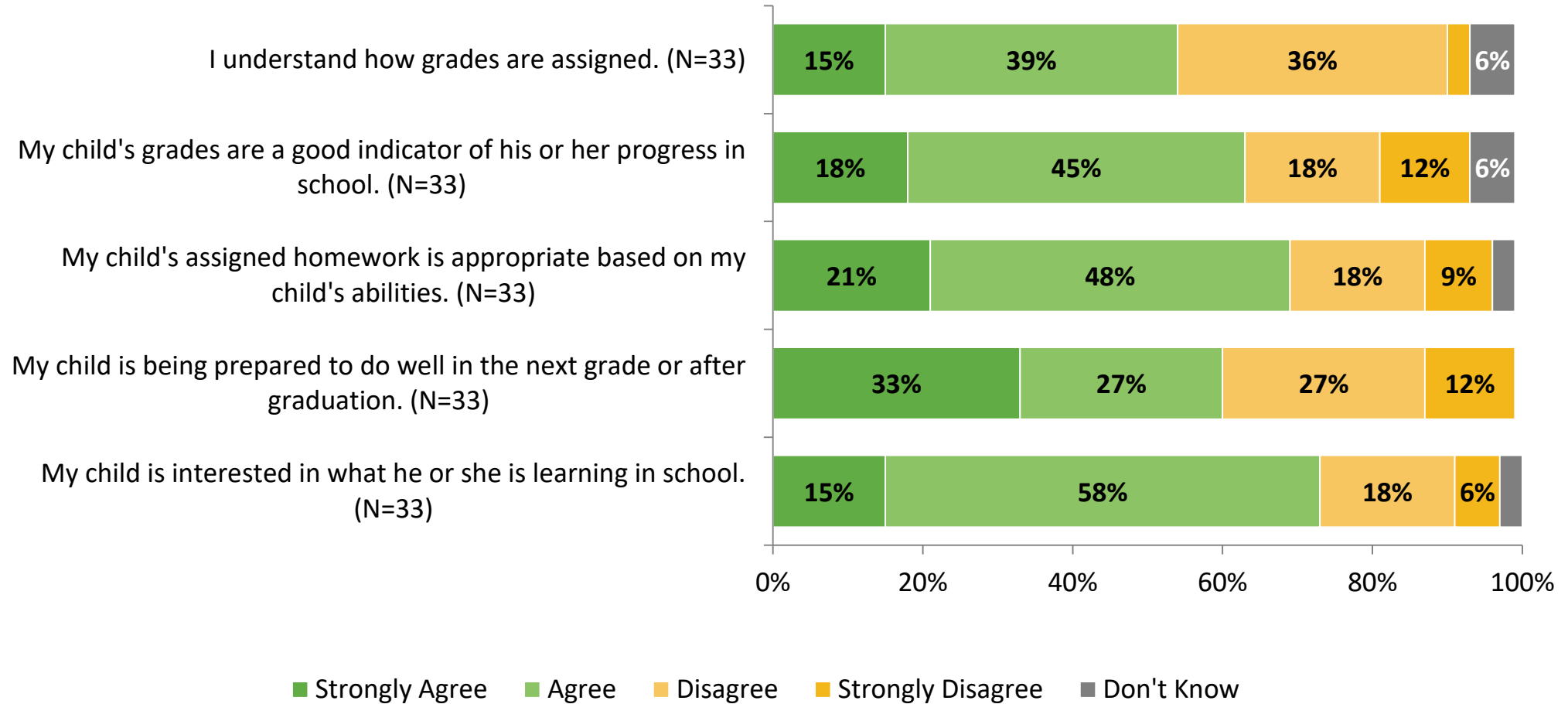
# Curriculum

How strongly do you agree or disagree with the following statements?



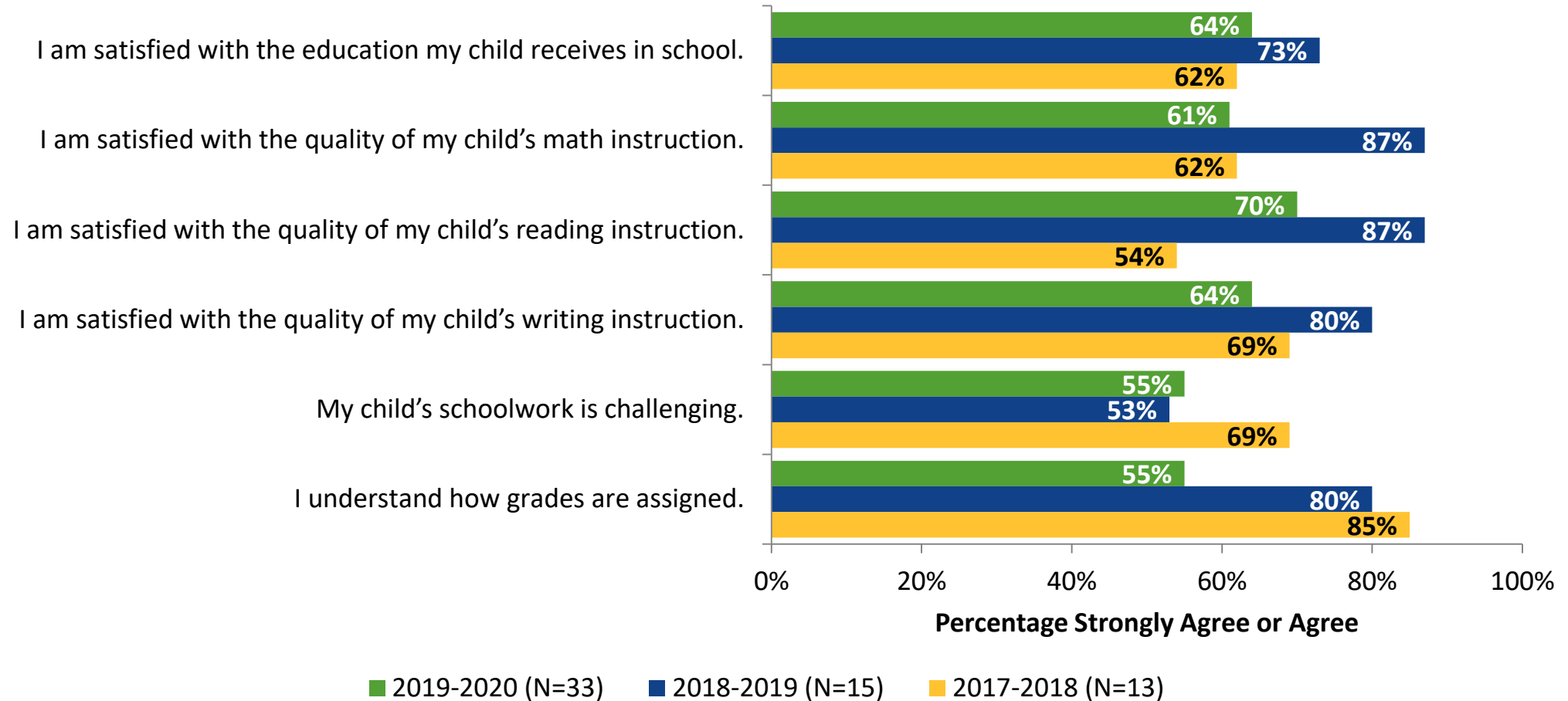
# Curriculum (Continued)

How strongly do you agree or disagree with the following statements?



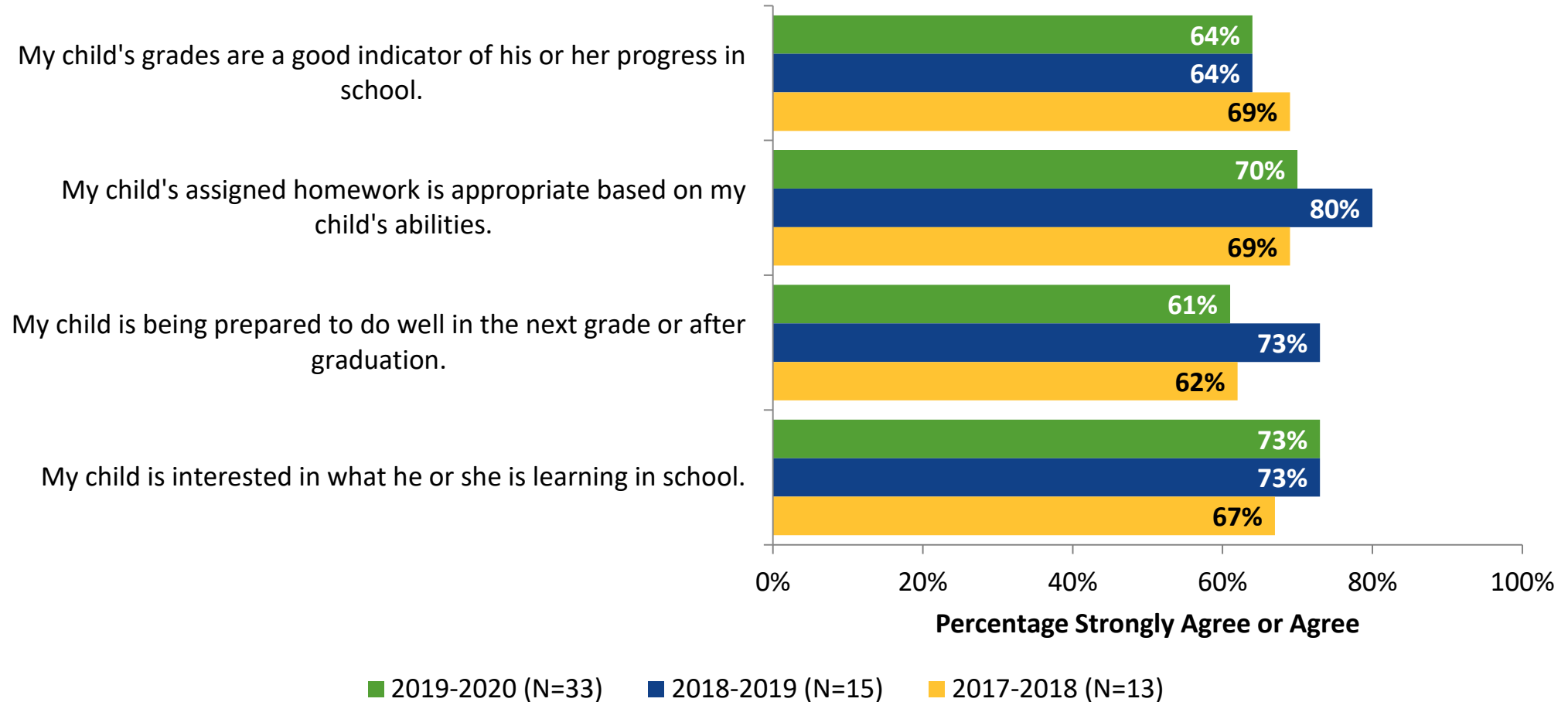
# Curriculum: Comparison Over Time

How strongly do you agree or disagree with the following statements?



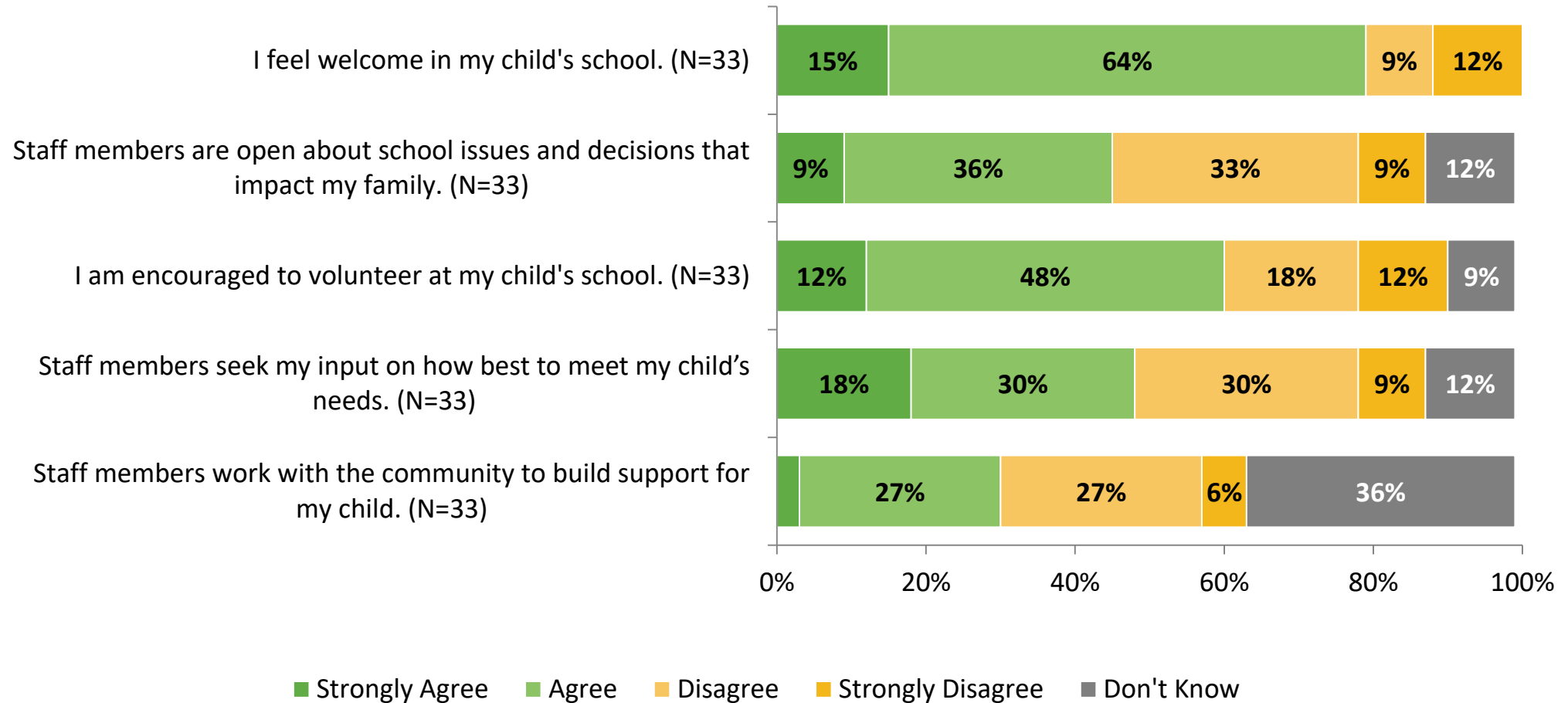
# Curriculum: Comparison Over Time (Continued)

How strongly do you agree or disagree with the following statements?



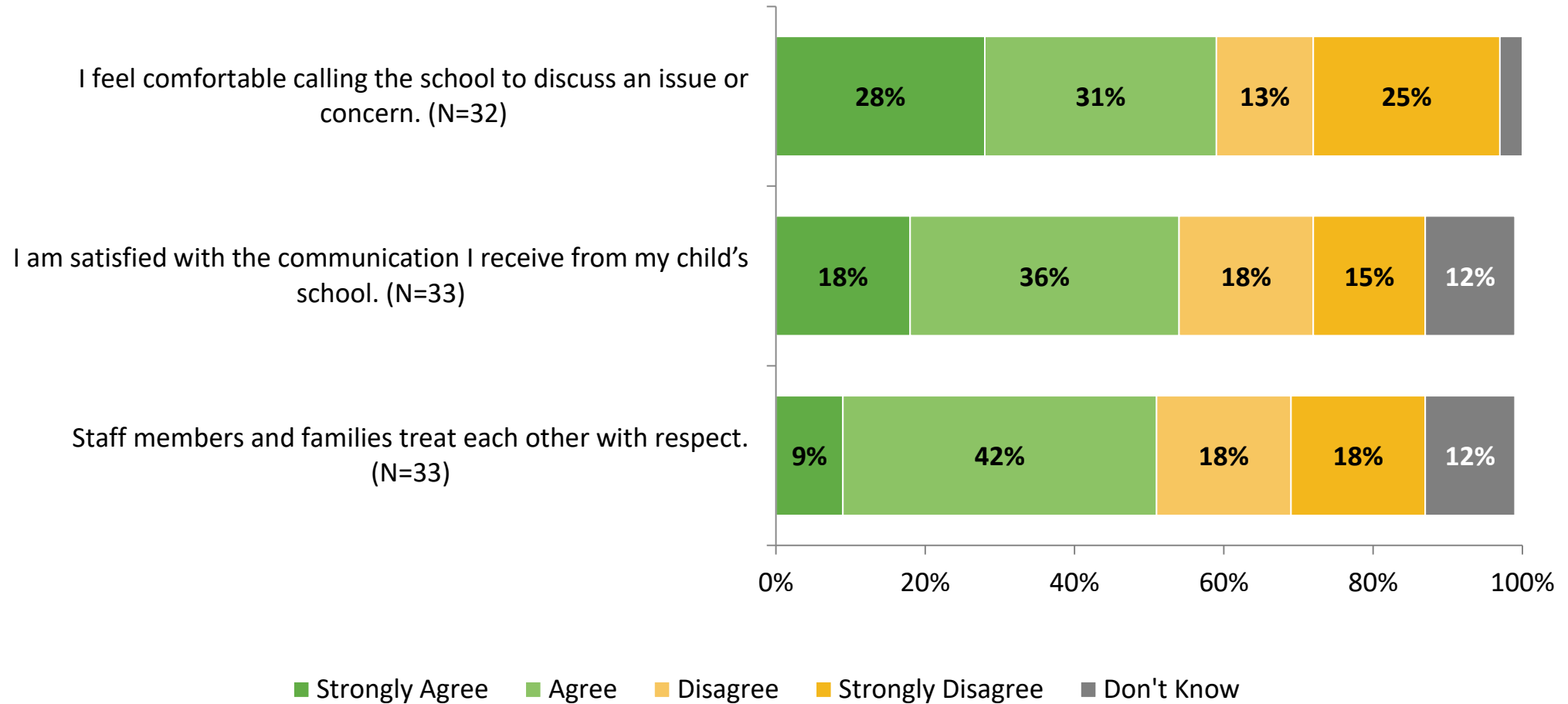
# Parent and Community Engagement

How strongly do you agree or disagree with the following statements?



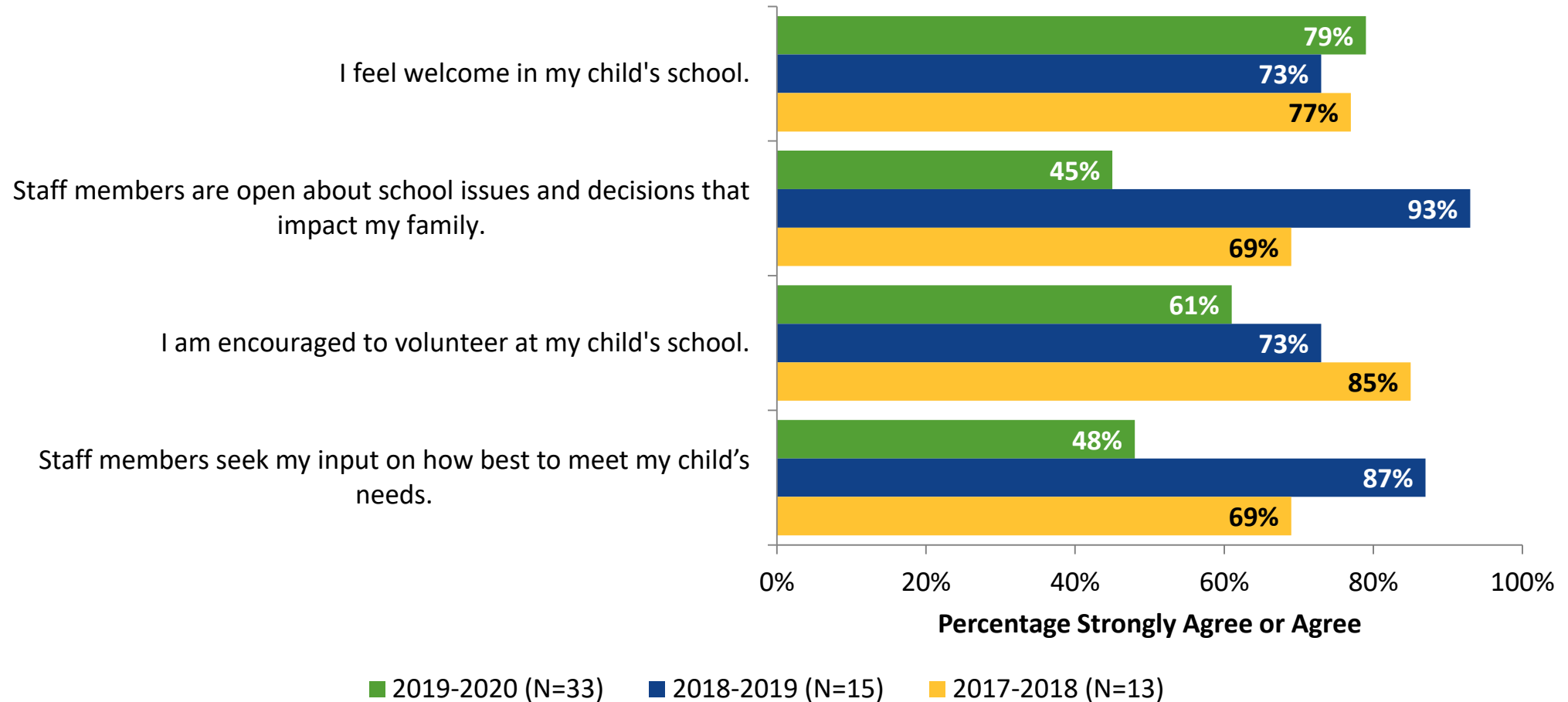
# Parent and Community Engagement (Continued)

How strongly do you agree or disagree with the following statements?



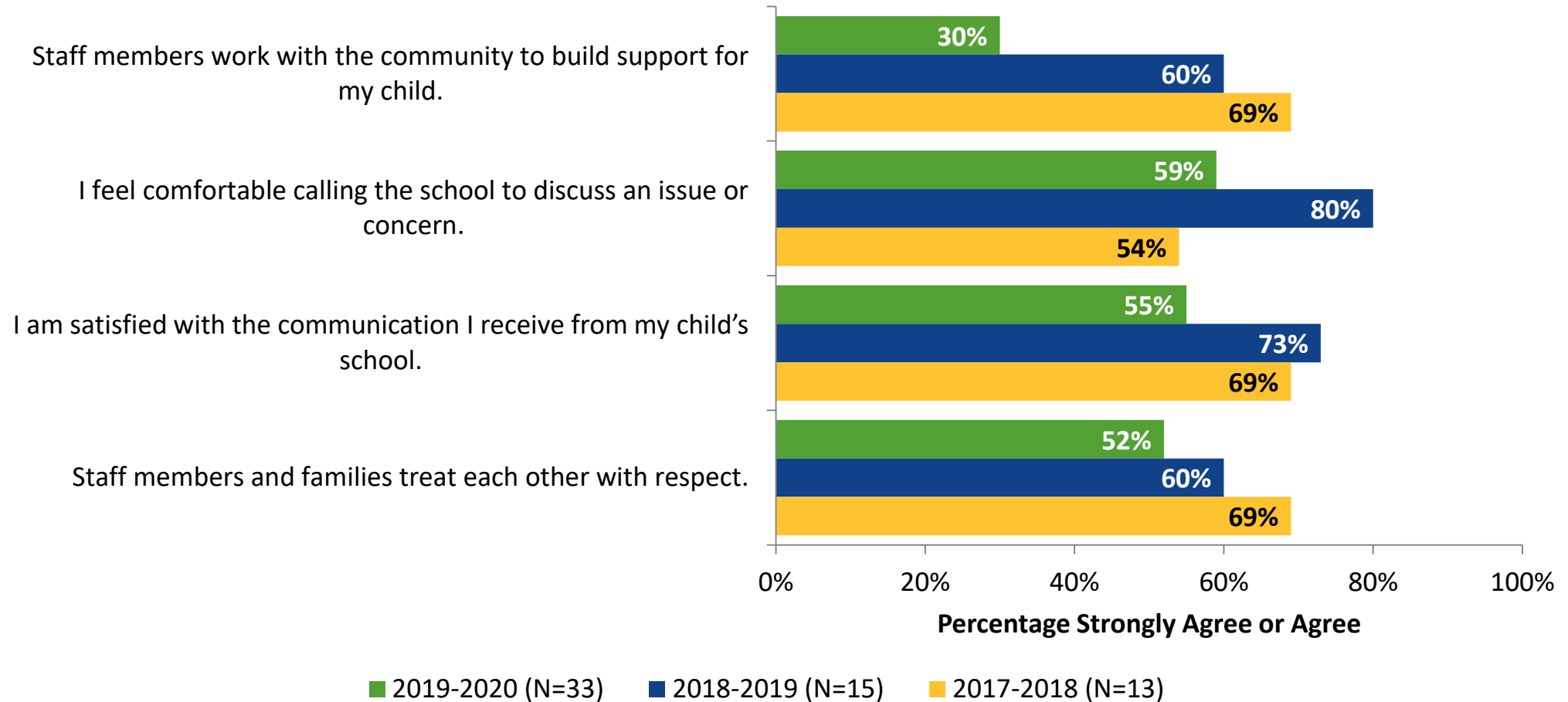
# Parent and Community Engagement: Comparison Over Time

How strongly do you agree or disagree with the following statements?



## Parent and Community Engagement: Comparison Over Time (Continued)

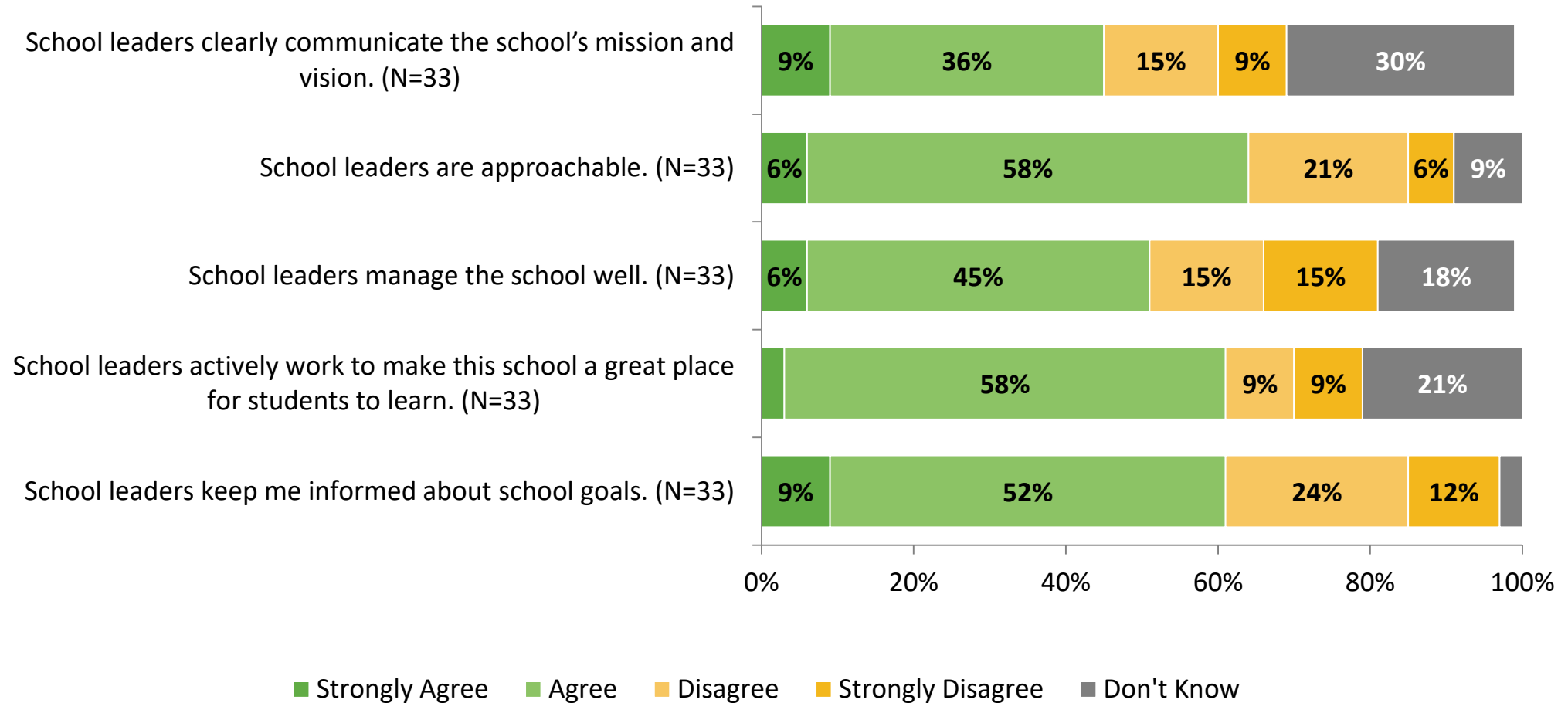
How strongly do you agree or disagree with the following statements?





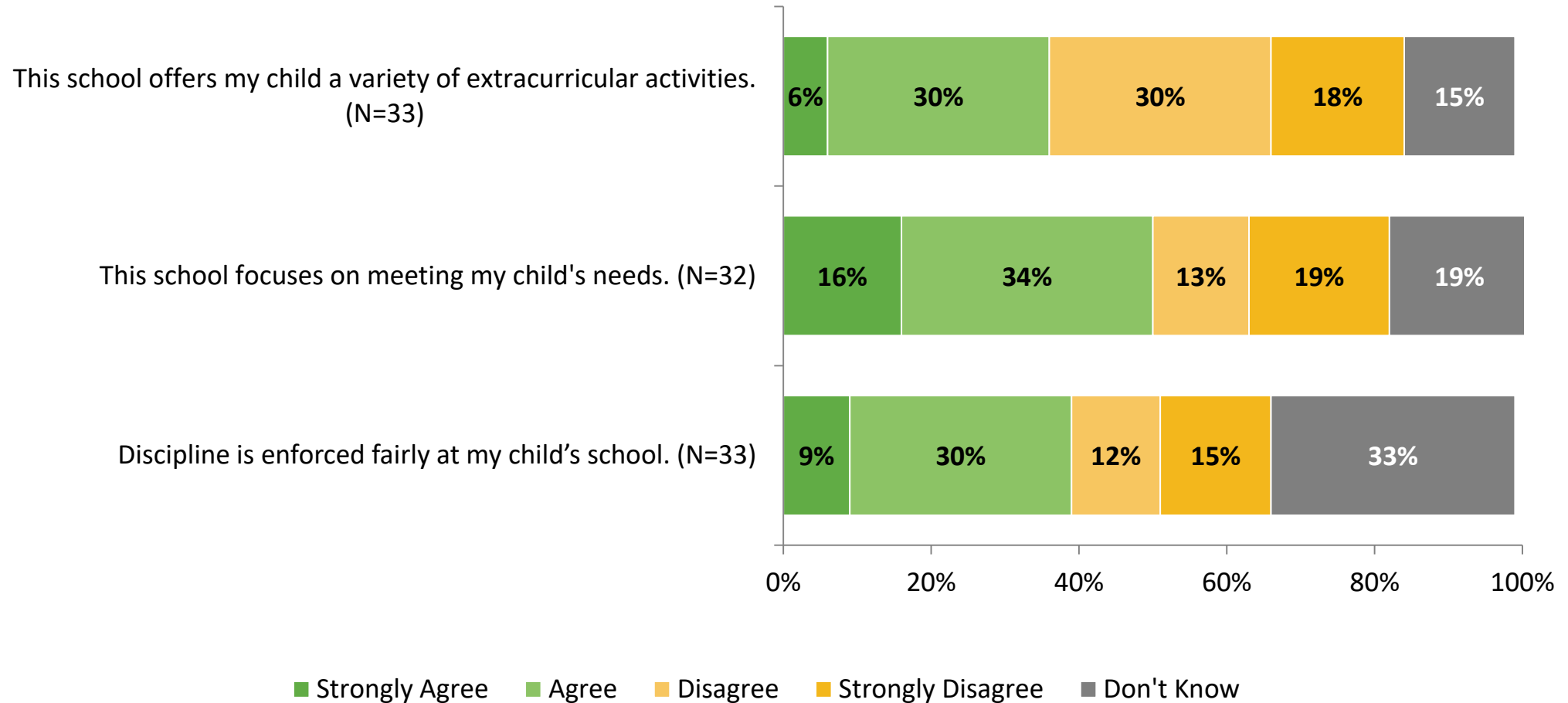
# School Leadership

How strongly do you agree or disagree with the following statements?



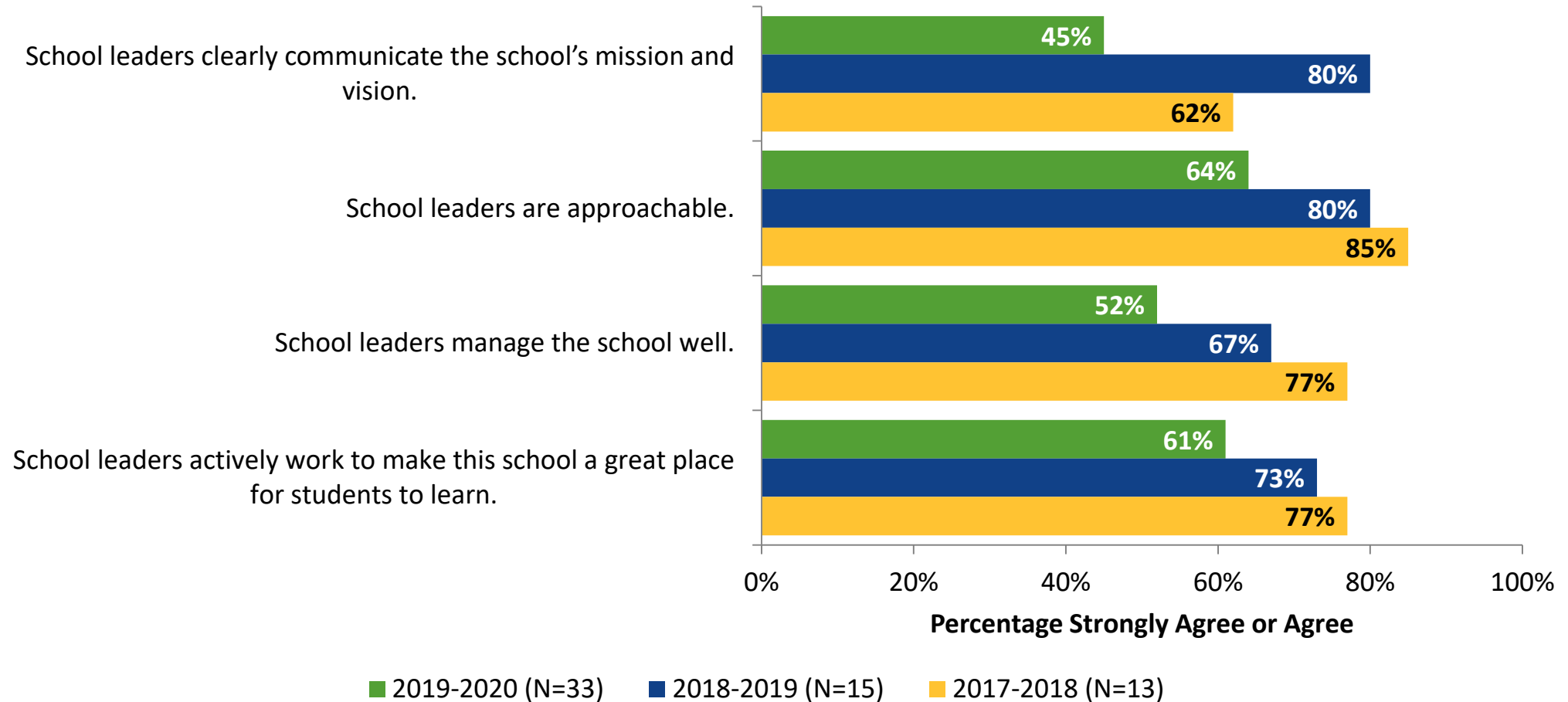
# School Leadership (Continued)

How strongly do you agree or disagree with the following statements?



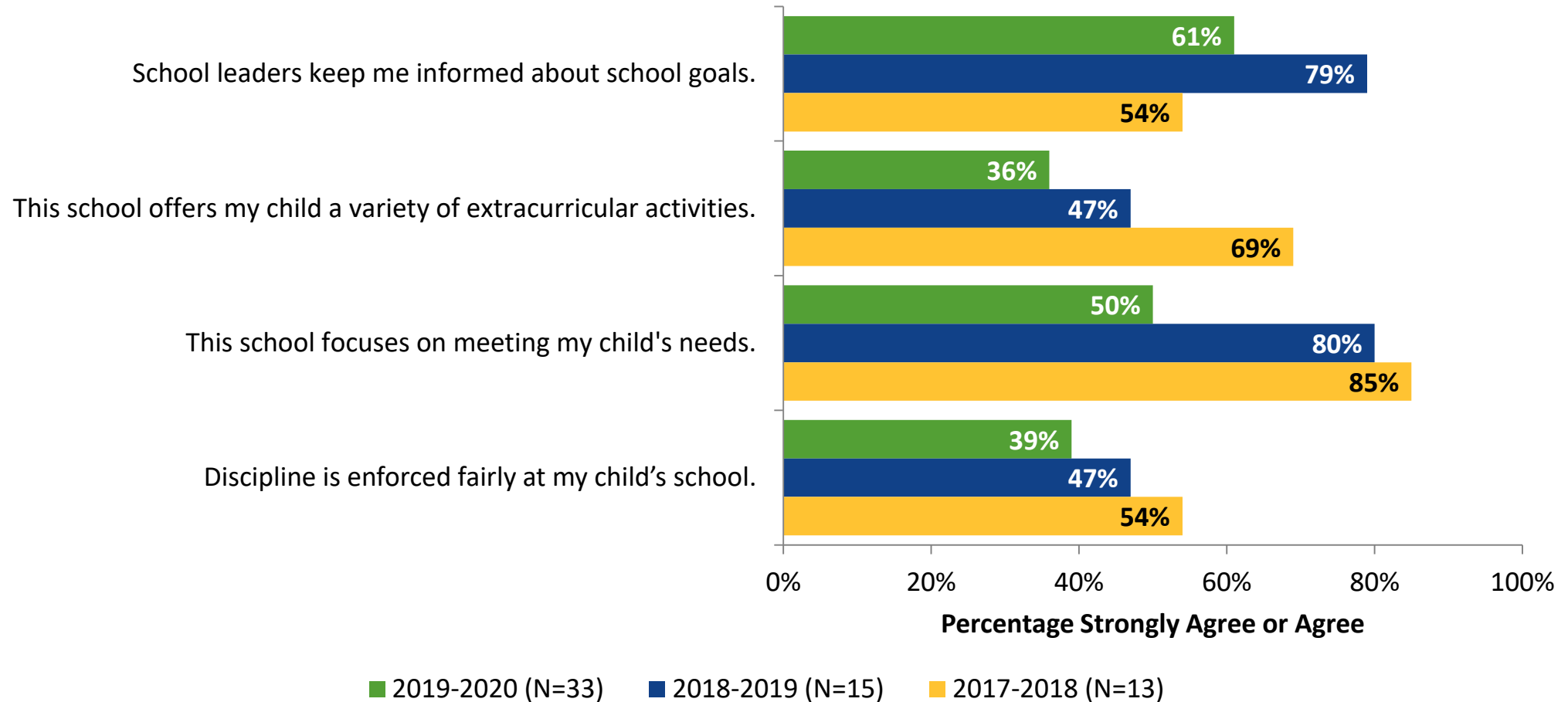
# School Leadership: Comparison Over Time

How strongly do you agree or disagree with the following statements?



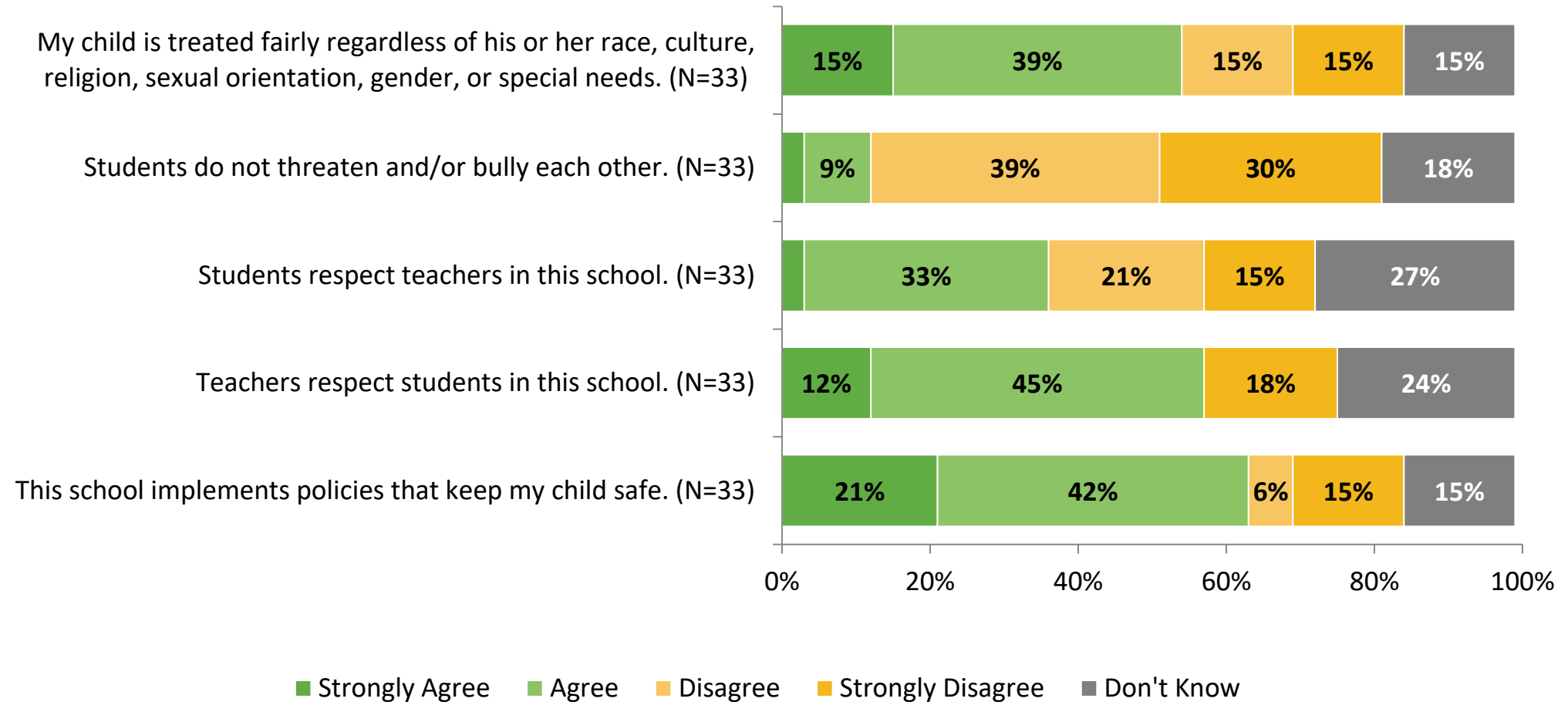
# School Leadership: Comparison Over Time (Continued)

How strongly do you agree or disagree with the following statements?



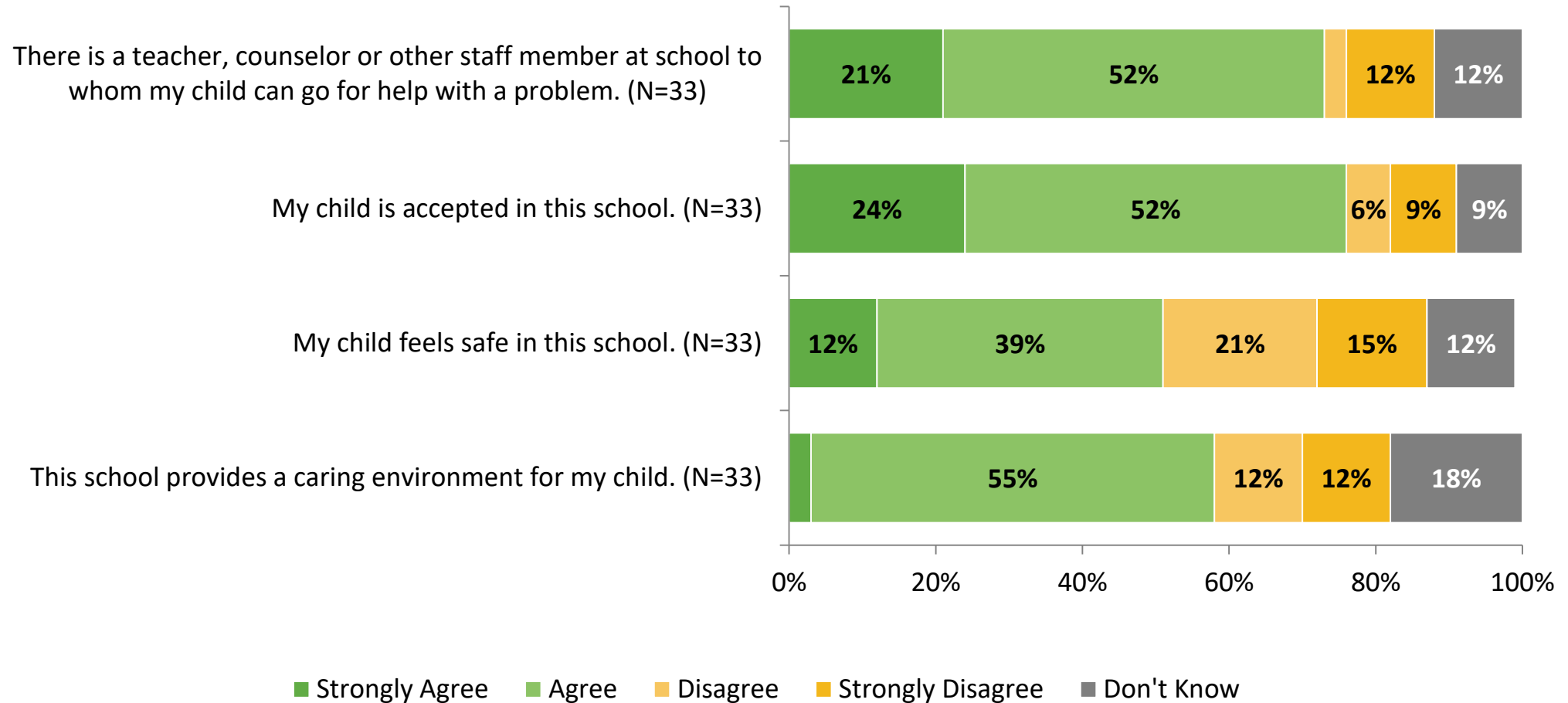
# Social-Emotional Learning

How strongly do you agree or disagree with the following statements?



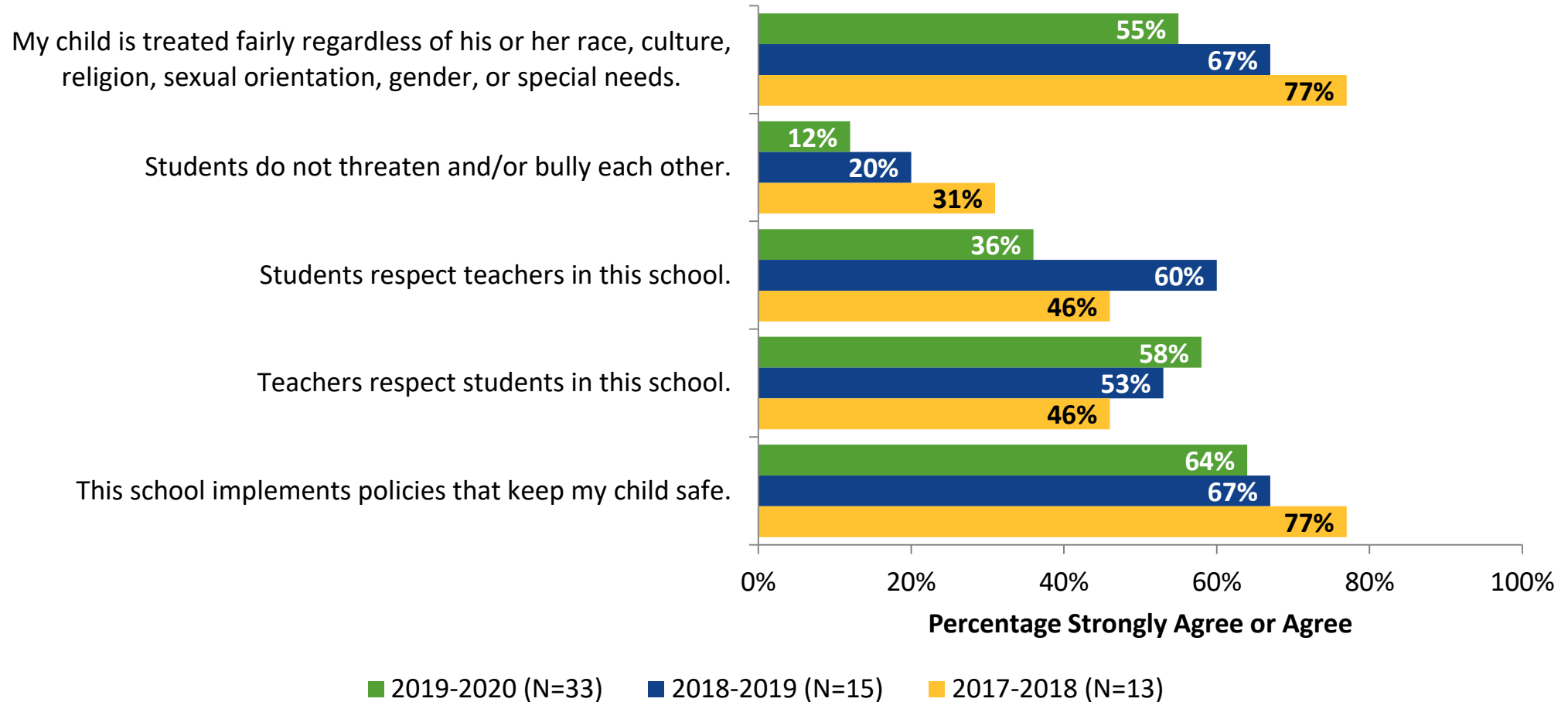
# Social-Emotional Learning (Continued)

How strongly do you agree or disagree with the following statements?



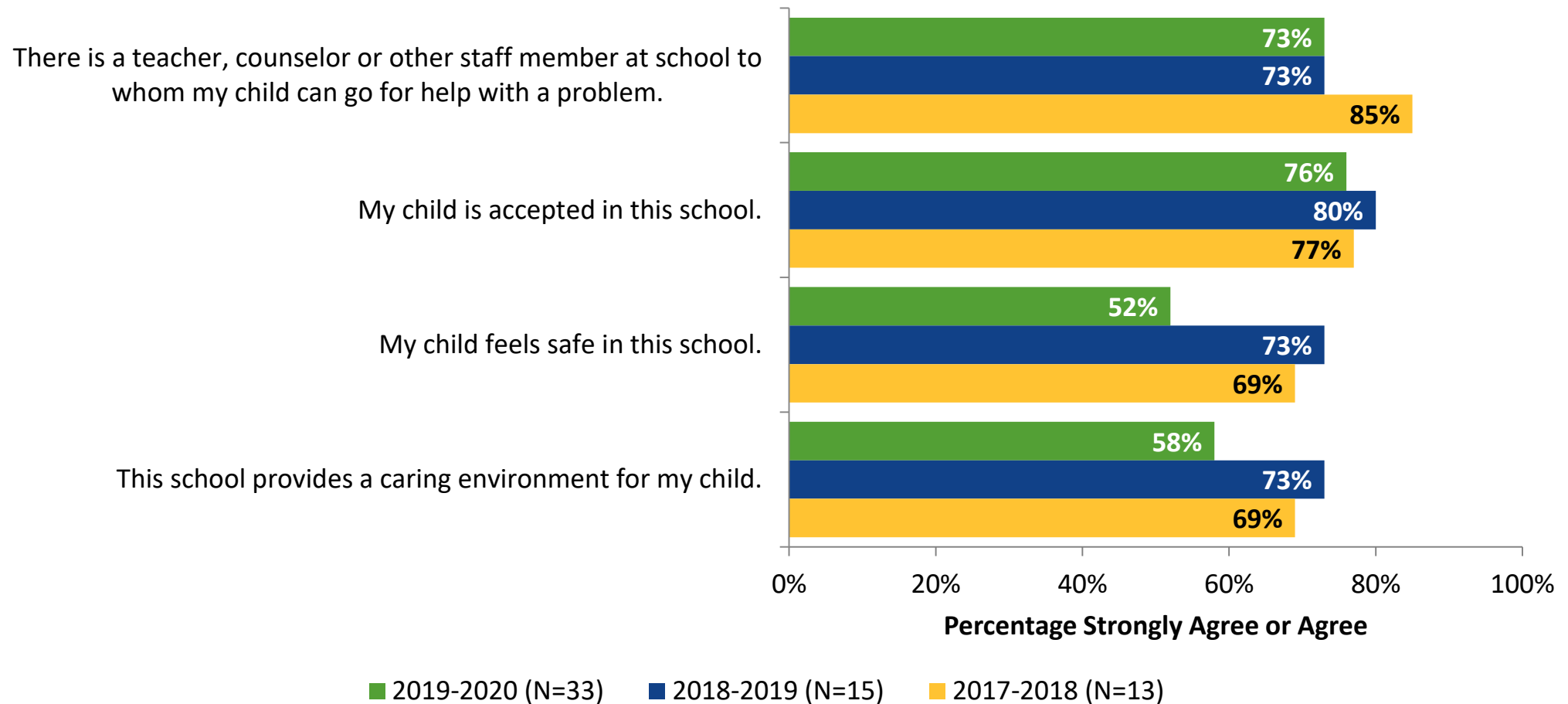
# Social-Emotional Learning: Comparison Over Time

How strongly do you agree or disagree with the following statements?



# Social-Emotional Learning: Comparison Over Time (Continued)

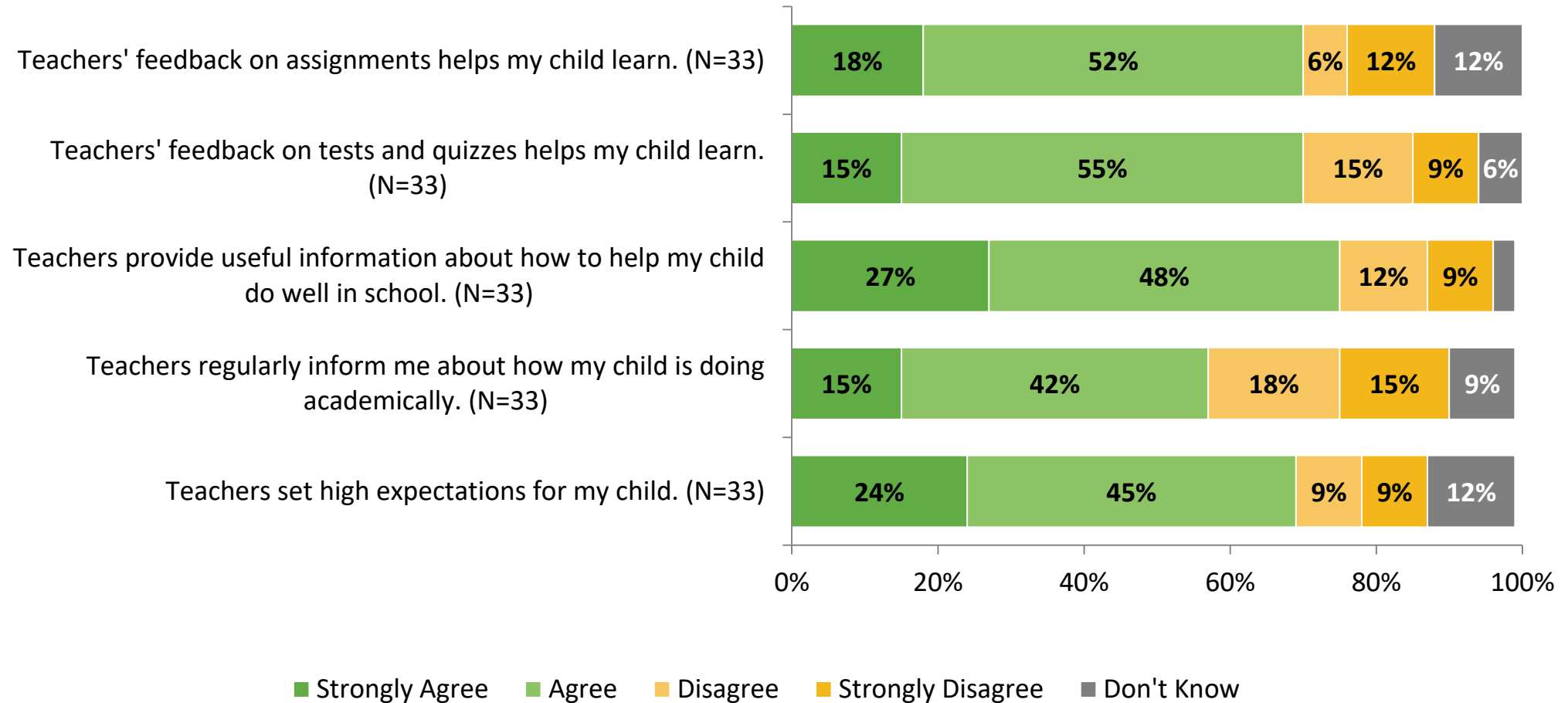
How strongly do you agree or disagree with the following statements?





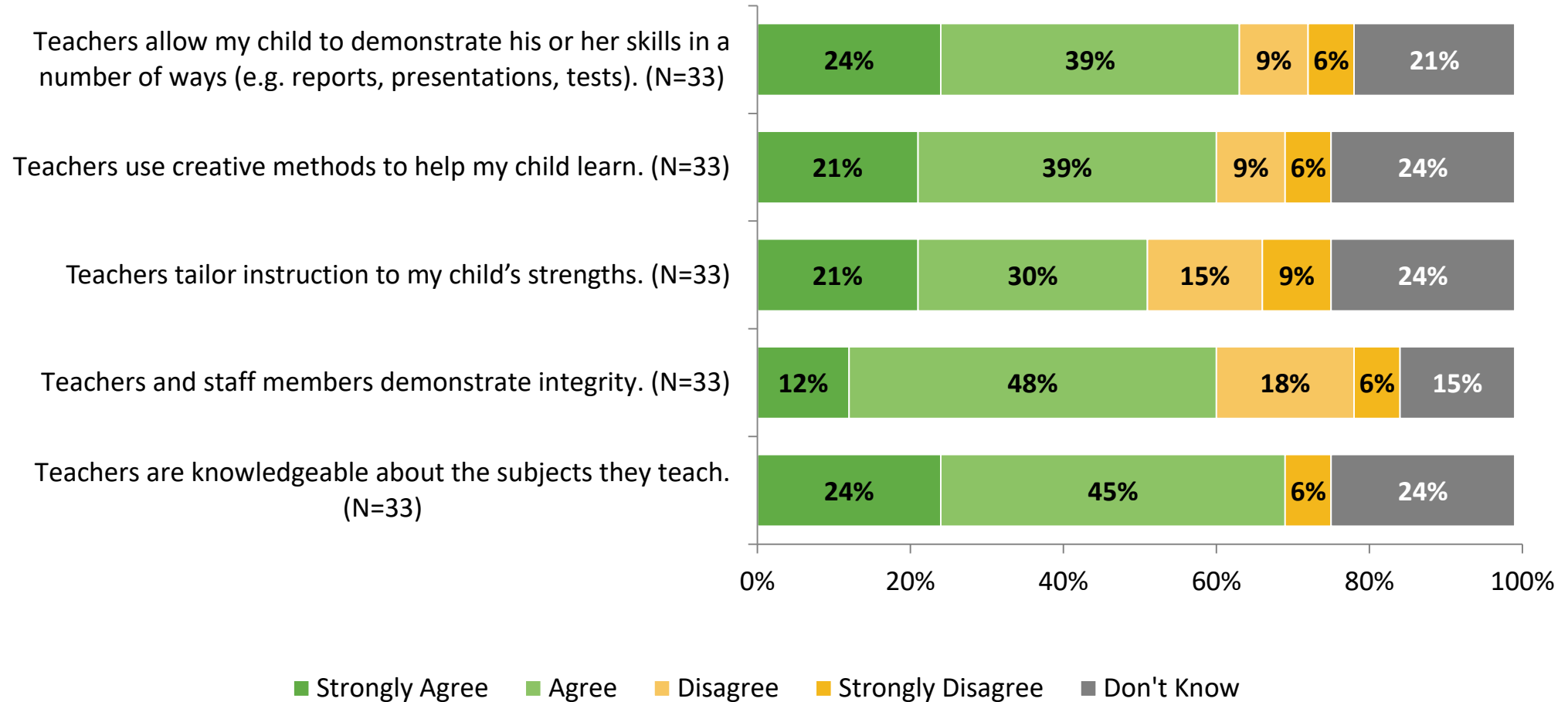
# Instruction

How strongly do you agree or disagree with the following statements?



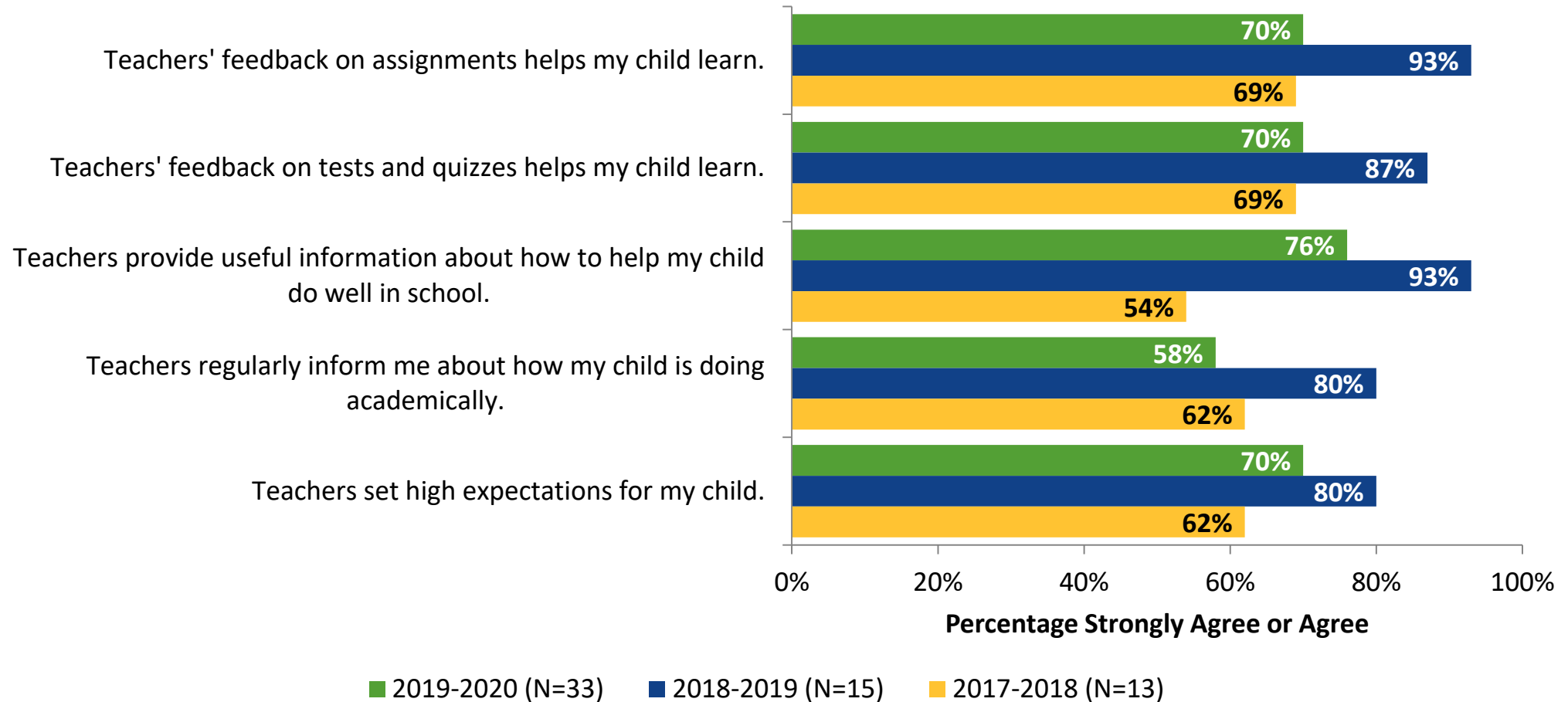
# Instruction (Continued)

How strongly do you agree or disagree with the following statements?



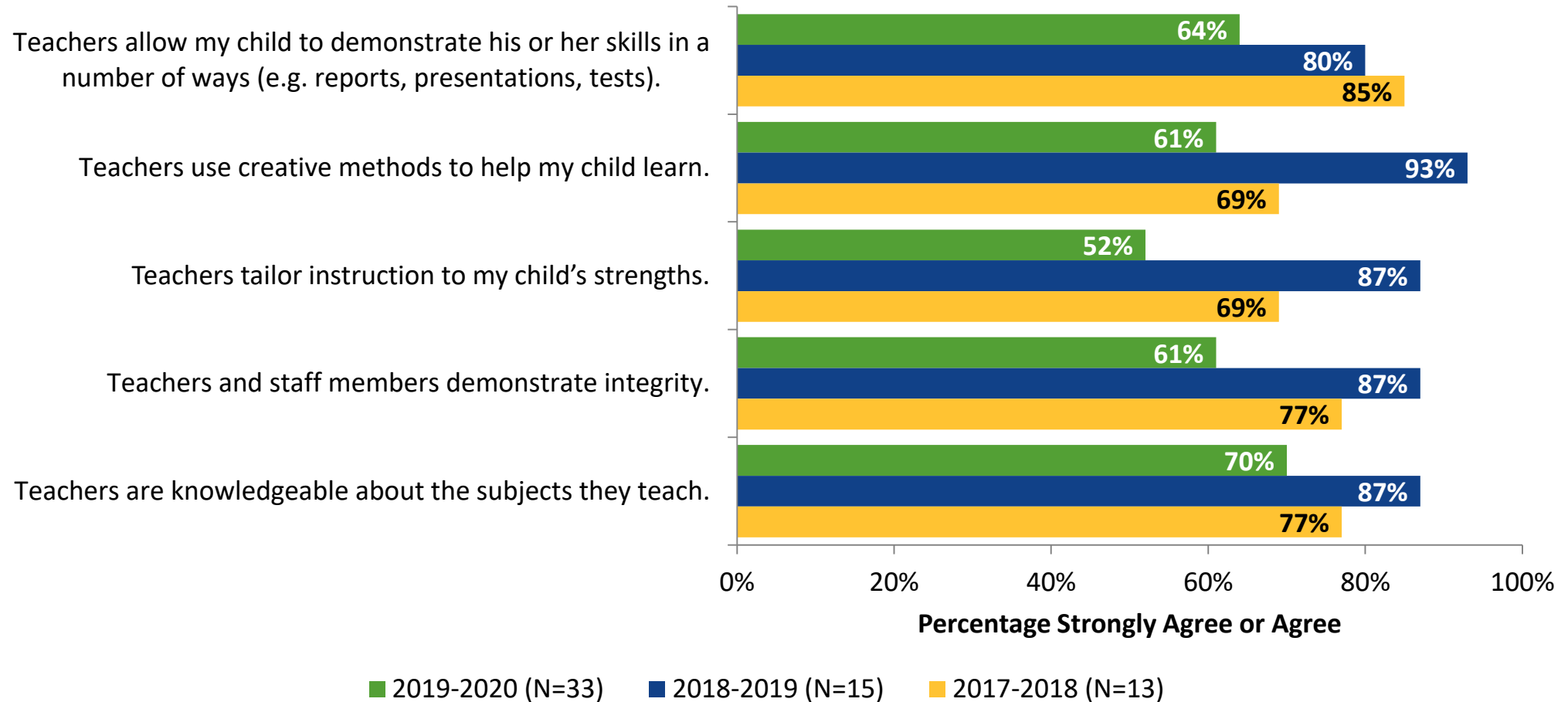
# Instruction: Comparison Over Time

How strongly do you agree or disagree with the following statements?



# Instruction: Comparison Over Time (Continued)

How strongly do you agree or disagree with the following statements?





---

Follow us on Twitter: @k12insight  
[www.k12insight.com](http://www.k12insight.com)