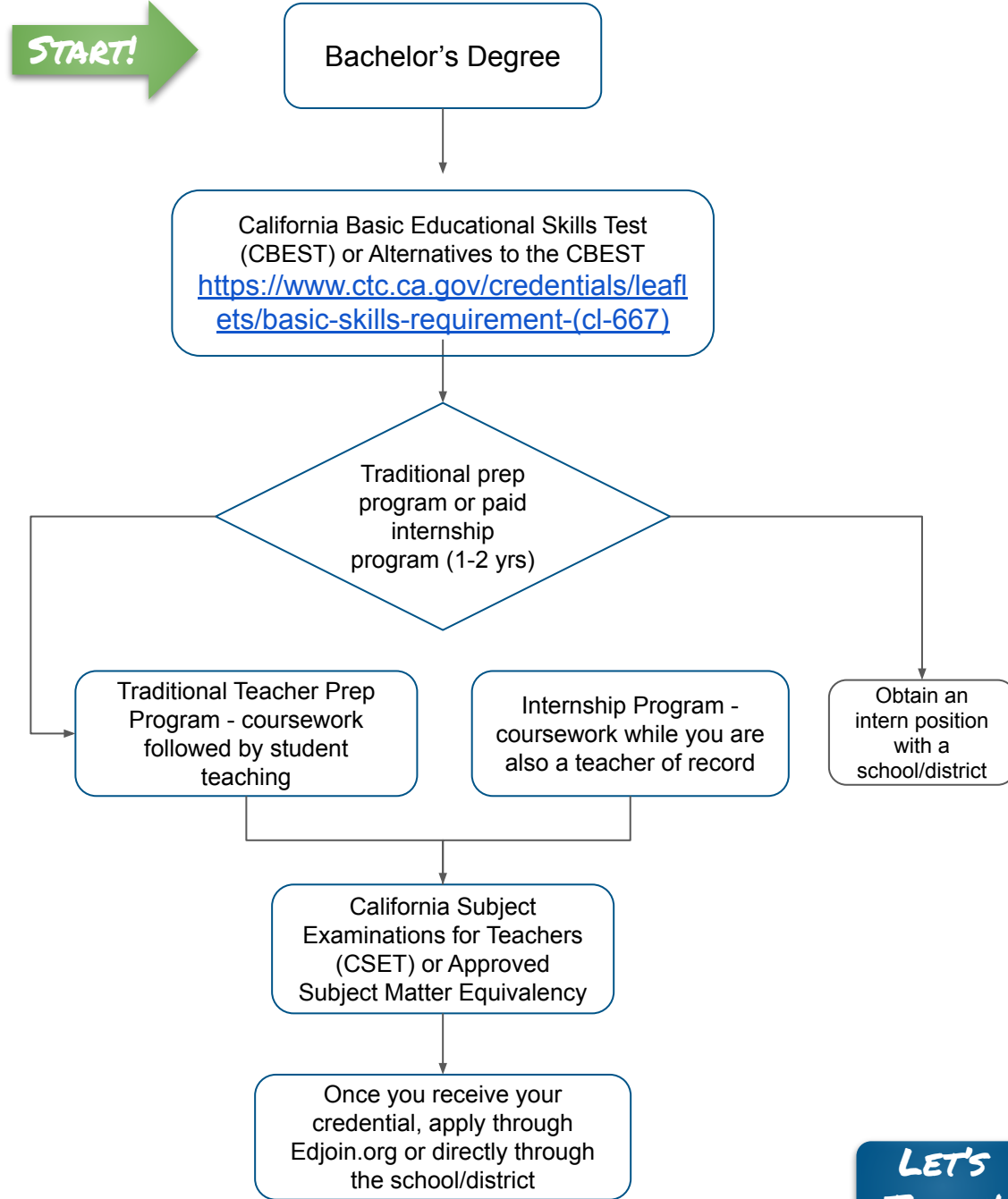




There are many pathways to becoming an educator.
Here's a quick guide to earning your...

Special Education Credential - CA

Holder conducts educational assessments related to student's access to the academic core curriculum and progress towards meeting instructional academic goals, provide instruction, and Special Education support. Specialties include Mild/Moderate, Moderate/Severe, Deaf and Hard of Hearing, Visual Impairment, Physical and Health Impairments, Early Childhood Special Education, and Language and Academic Development.



LET'S TEACH!

TIPS!

Videos to help you prepare for a teaching career at bit.ly/EDUcareervideos

If your degree is from outside the US, you'll need a U.S. Constitution course or equivalency exam.

Traditional - potential access to federal financial aid

Internship - paycheck, benefits, and retirement but no fed aid \$

SDCOE Special Education Internship program info at www.sdcoe.net/teacherprep

Certificate of Clearance (fingerprinting) is required before student teaching or beginning an internship.

Information about California educator credentialing assessments at ctcexams.nesinc.com

Some candidates may be required to take the Reading Instruction Competency Assessment (RICA). SDCOE has CBEST, CSET, and RICA [test prep!](#)

The school/district will let you know what level of clearance and type of fingerprints are required. SDCOE has fingerprinting services on our main campus and in San Marcos. www.sdcoe.net/credentials

For Complete Credential Information and Details See ctc.ca.gov/credentials