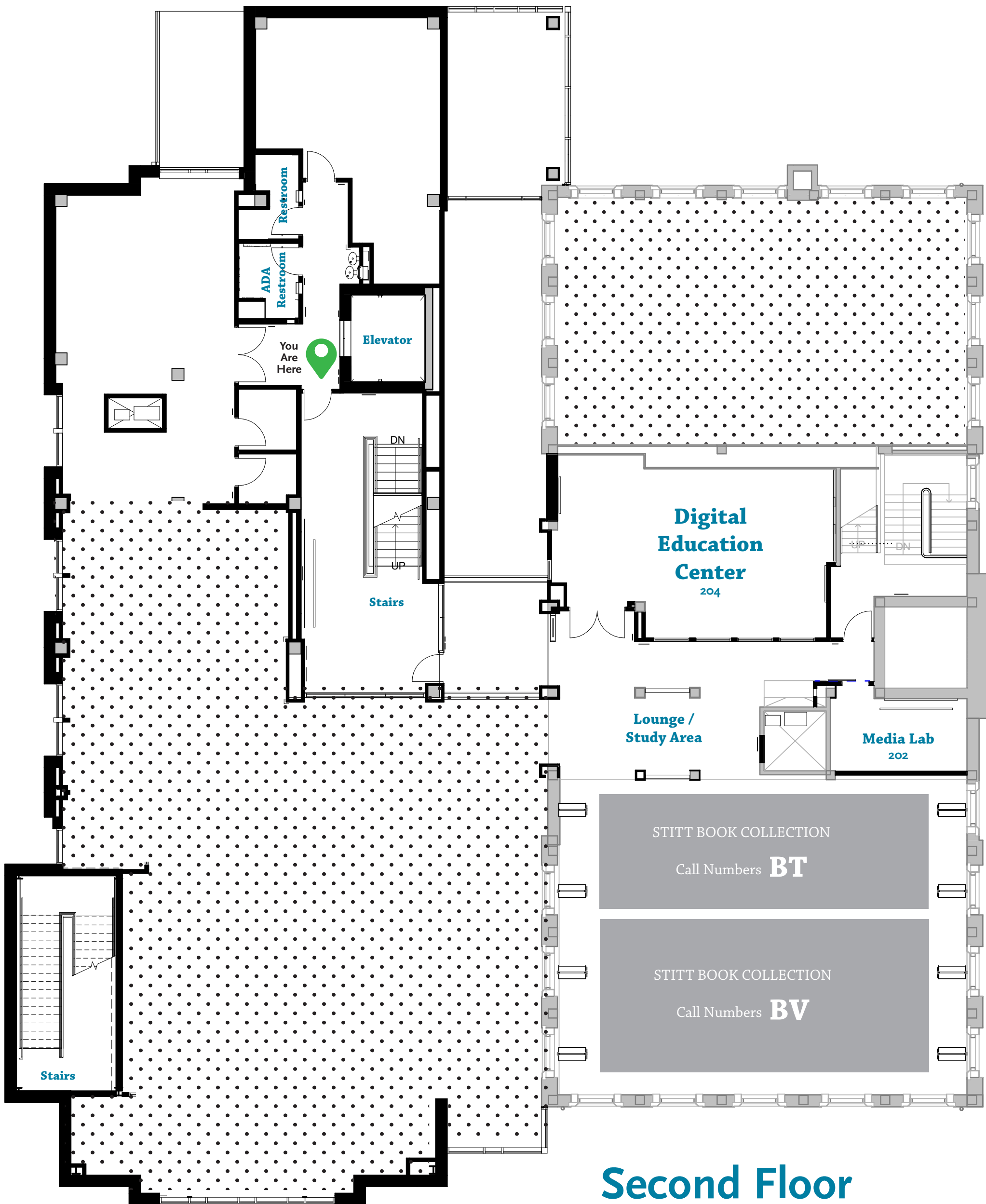



First Floor




Flowers Terrace



**Library
Director's Office**
307



The diagram shows a cross-section of an elevator shaft. At the top, there is a pulley system with a rope running over it. The rope is attached to a counterweight on the right and the elevator car on the left. The elevator car is a rectangular box with a door on the right side. The shaft is lined with a guide rail system. The word "Elevator" is written in blue text inside the car.



Restroom

The floor plan shows a section of the second floor. At the top, there is a small room with two rectangular tables. Below this, a large area is labeled "Group Study 308" in blue text. To the left of this area is a vertical corridor with a door labeled "I". Below the Group Study area is another large area labeled "ADA Carrel 326" in blue text. To the right of the ADA Carrel area is a curved wall and a door. At the bottom, there is a horizontal corridor with a door.

ADA Carrel
326

Carrel
325

Carrel
324

Carrel
323

Carrel
322

STITT BOOK COLLECTION
Call Numbers

BL – BR

STITT BOOK COLLECTION
Call Numbers
A –BJ


A -BJ

Carrel
319


Carrel
318

Carrel
317

Carrel
316



Carrel
315



**ADA
Carrel
321**

STITT BOOK COLLECTION

Call Numbers **BR**

Call Numbers **BR**

STITT BOOK COLLECTION

Call Numbers **BS**

Call Numbers **BS**

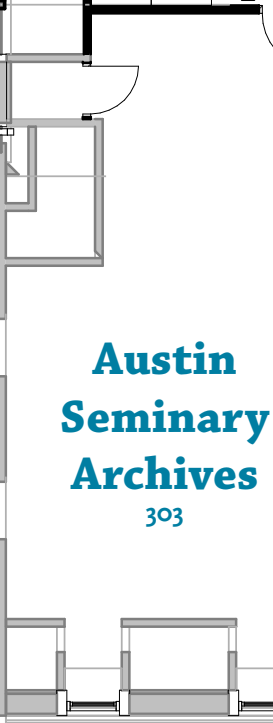
Stairs

Diagram illustrating the ADA Unisex Restroom stall layout, showing the placement of grab bars and the toilet.



Archival Storage

The floor plan shows a large rectangular space divided into two main areas by a vertical wall. On the left is the **Austin Seminary Archives** (303), and on the right is the **Archives Collection** (304). The plan includes various rooms, corridors, and a central vertical corridor. The text is in a blue serif font.



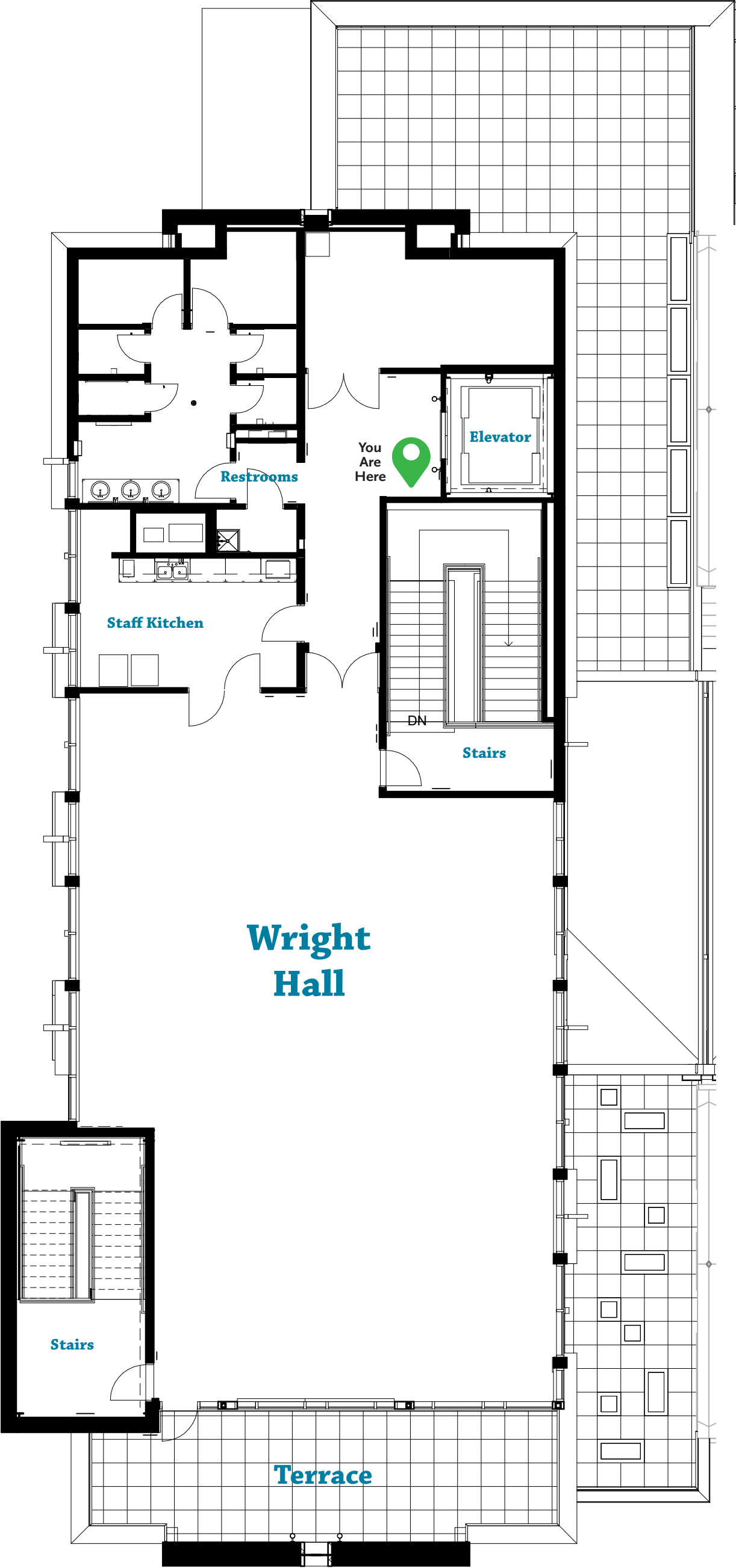
**Austin
Seminary
Archives**

303

**Visiting Professor
Office**
309

**Archives
Conference
Room**
310

Third Floor



Fourth Floor