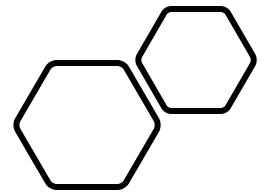
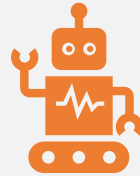


Wakulla Innovative Educational Approach

Distance & Remote Learning through your WCSB school-site



CANVAS : LEARNING MANAGEMENT SYSTEM



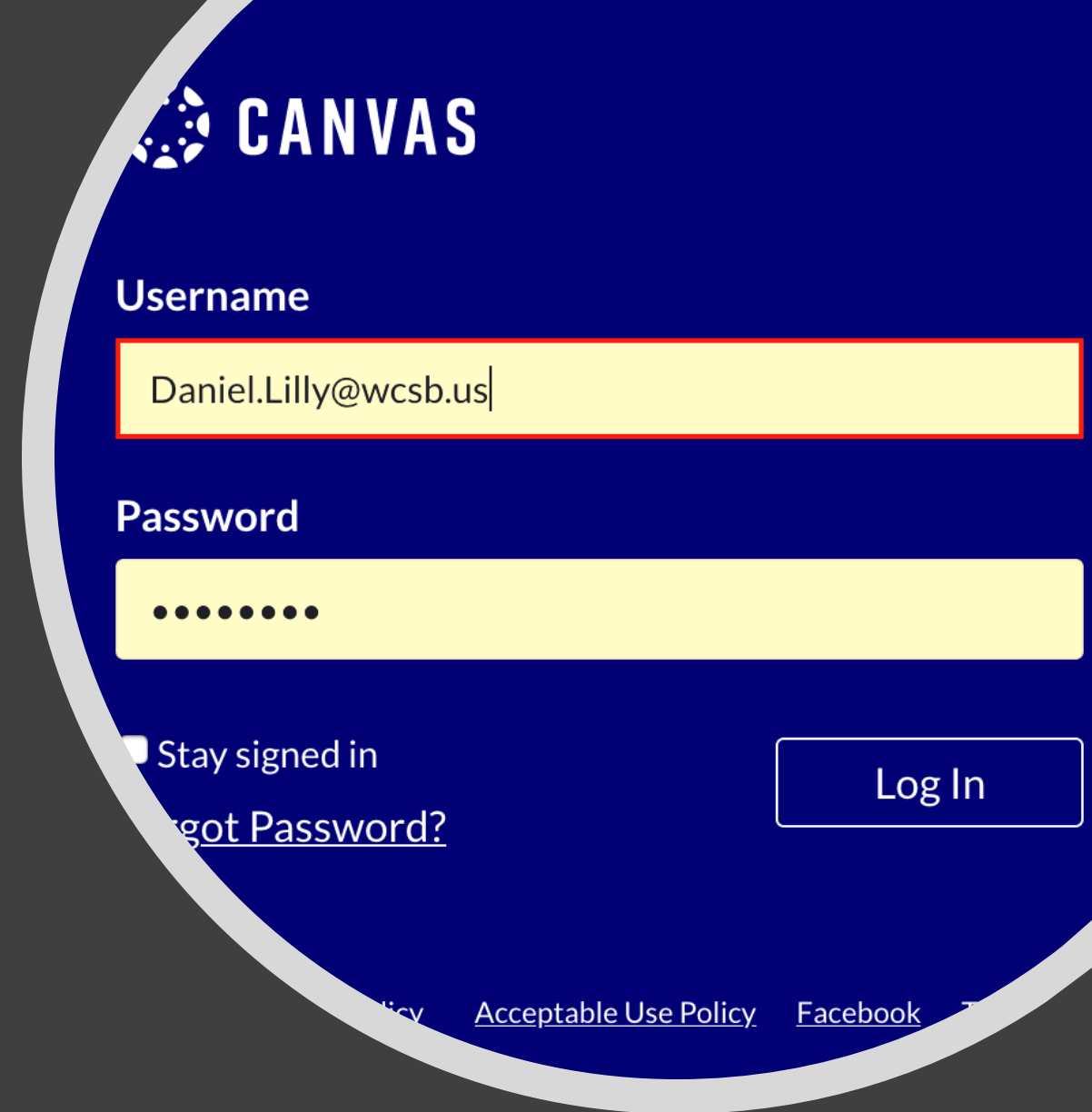
A Learning Management System (LMS) is a [software application](#) for the administration, documentation, tracking, reporting, automation and delivery of [educational](#) courses, training programs, or learning and development programs.



This differs from Focus, our Student Information System (SIS), in that it is specifically designed to be a platform that can provide new content and be the link between teacher and student.

Our LMS: Canvas

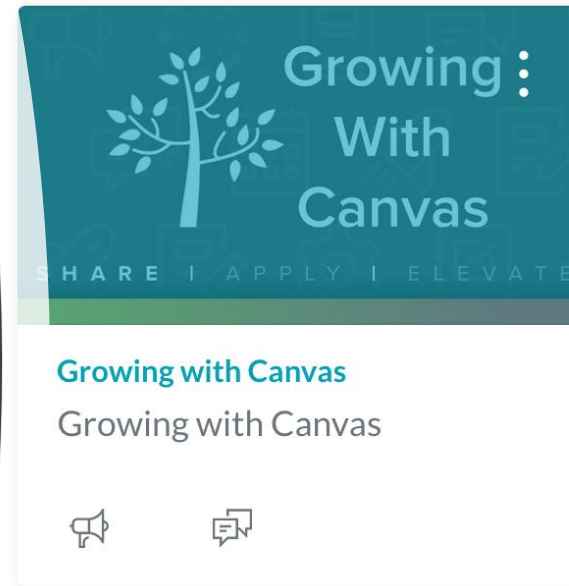
- Canvas is easy to use.
- Canvas is web-based and accessible via any device that can browse the internet.
- Canvas allows students to download and upload content for offline work.
- Works with WCSB single sign-on through ClassLink.



Canvas For Your Student

- Every student will have their own Canvas account with their own courses they've been scheduled for at their school site.
- Instruction in each course is aligned to state standards and is on the same pacing district-wide.
- The Wakulla Innovative Educational Approach is implemented at each school site and allows parents and students flexibility

Dashboard

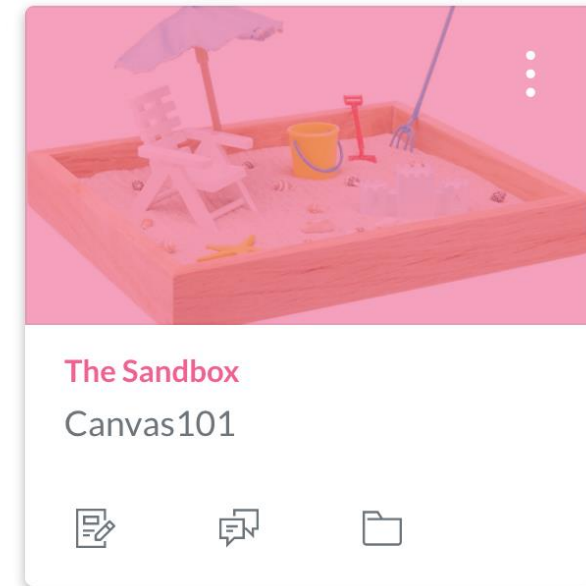


Growing With Canvas
SHARE | APPLY | ELEVATE

Growing with Canvas
Growing with Canvas

🔔 🗨️

This card features a teal background with a white tree icon on the left. The text 'Growing With Canvas' is in white, with 'SHARE | APPLY | ELEVATE' in smaller white letters below it. The course title 'Growing with Canvas' and its ID 'Growing with Canvas' are in blue and black text. At the bottom, there are two icons: a bell and a speech bubble.



The Sandbox
Canvas101

📄 🗨️ 📁

This card has a pink background with an illustration of a sandbox containing a white chair, a blue umbrella, a yellow bucket, and a red shovel. The course title 'The Sandbox' and its ID 'Canvas101' are in pink and black text. At the bottom, there are three icons: a document, a speech bubble, and a folder.



English 1: Master Shell
1001310

🔔

This card has a red background with an illustration of wooden blocks spelling out 'LEARN'. The course title 'English 1: Master Shell' and its ID '1001310' are in red and black text. At the bottom, there is one icon: a bell.

Wakulla Innovative and Brick and Mortar School Year 20-21

- Canvas will be implemented district-wide to varying extent during the 20-21 school year. But is the platform for WIEA students.
- For questions about scheduling or offerings contact your student's school of enrollment. Elective offerings are limited at this time.
- WIEA students will begin working on new standards for the 20-21 school-year on August 27th.
- Each student at the elementary level will have one primary teacher that will be the point of contact for your student.
- At the secondary level teachers are assigned by period.

FOR
QUESTIONS
OR
CONCERNS
ABOUT
DISTANCE
LEARNING:

For scheduling, extra-curriculars, and media concerns be sure to contact your student's school site. For information about contacts and your child's school:

The district website is: wakullaschooldistrict.org

For questions about device dispersal and hardware & technology.

Contact the IT Help Desk :

Hours of Operation: 8:00 A.M. to 4:00 P.M. Monday- Friday

850-926-0112

helpdesk@wcsb.us

Daniel Lilly
Coordinator of Distance Learning
Wakulla County Schools
Daniel.Lilly@wcsb.us
850-926-0065 ext.9507