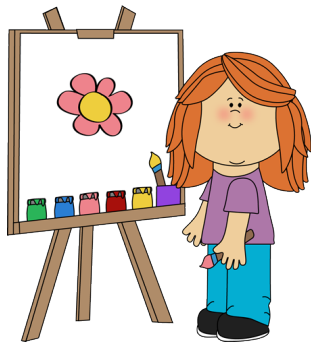


How do I apply for my child?

- Role models are chosen through a lottery system. Applications may be found on the PCPS website.
- VPI students are chosen for a limited number of openings through the Virginia Preschool Initiative. Applications for screening may be found on the PCPS website.



PCPS Student Services

1033 Poquoson
Avenue
Poquoson, VA
23662
757-868-3050

I.P.O.P.

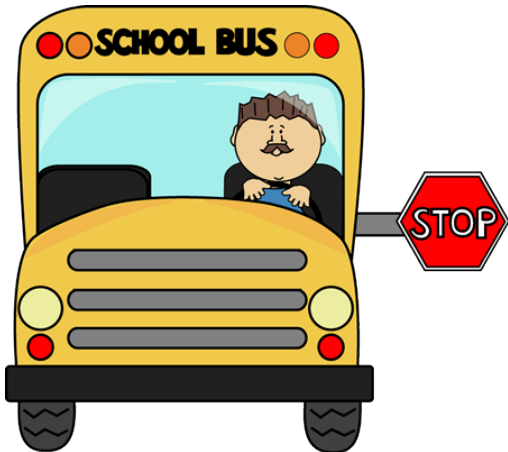
Integrated Poquoson Outreach Preschool



**Poquoson City
Public Schools**

What is I.P.O.P.?

- I.P.O.P. stands for Integrated Poquoson Outreach Pre-school.
- A preschool program, for residents of Poquoson, that serves children with special needs and their typically developing peers.
- Transportation is provided for all participating students.



What types of children attend I.P.O.P.?

- Children ages 2 -5 years old with identified disabilities and an IEP that indicates preschool placement.
- Children ages 3 and 4 years old may apply to attend as a role model student. These students are chosen by lottery. They attend 1/2 day, 4-5 days per week.
- Children who are 4 years old on September 30th of the starting school year may attend based on academic readiness needs. This program is through the Virginia Preschool Initiative (VPI) and requires screening testing. These children attend 1/2 day, 5 days per week.



What is the cost of tuition?

- Children with an IEP attend at no cost to the parent.
- Role model students are charged tuition of \$500.00 per semester which is due in August and January
- Children who attend as part of the VPI program attend at no cost to the