



# 2022-2023 SAFE RETURN TO SCHOOL

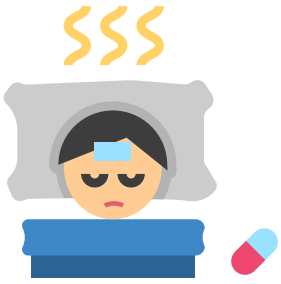


# COVID-19 Updates for 2022-2023



## What we know now:

- COVID-19 is here to stay
- Currently, COVID is more common, but less severe
- We have learned how to live with COVID and schools can manage the disease with support from our community
- SMFCSD will continue to monitor COVID-19 and we will adjust and update families as needed



# Stay Home When Sick

To help protect students and staff at school, it is important to continue to control the spread of COVID-19 in our community. Students and staff are asked to stay home if they feel sick or if they are experiencing symptoms. This is a crucial preventative measure in maintaining safety for everyone.

Anyone presenting symptoms of COVID-19 infection will be advised not to return to school until they have tested and met the CDPH criteria to return to school:

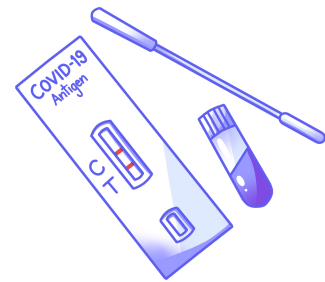
1. At least 24 hours have passed since resolution of fever without the use of fever-reducing medications; and
2. Other symptoms have improved; and
3. They have a negative test for COVID-19, OR a healthcare provider has provided documentation that the symptoms are typical of their underlying chronic condition OR a healthcare provider has confirmed an alternative named diagnosis. SMFCSD nursing staff will be available to provide support and consultation.
4. Please make sure that your current contact information is up to date so you can be reached quickly if your child is not feeling well

# Vaccinations



COVID-19 vaccinations are encouraged for ALL SMFCSD students. Vaccines continue to be the top safety strategy to slow the spread of the COVID-19 virus. Resources and information regarding vaccines may be viewed at: [SMC HEALTH](#).

# Self-Test at Home



Routine COVID-19 testing remains a key mitigation layer to detect and limit transmission in school communities. SMFCSD will provide COVID-19 rapid antigen test kits for students and families to self-screen at home for COVID19 symptoms prior to coming to school.

Pooled testing will no longer be offered at school, so please test if your child is at home and continue to monitor your household for anyone who may be symptomatic. If your child experiences symptoms such as: coughing, difficulty breathing, sore throat, etc., please stay home.

# Our Commitment to Health & Safety

---

## Face Masks



- Although not required, masks are strongly encouraged indoors.
- Face masks will be available to students or staff who request to wear a mask at school.
- The San Mateo-Foster City School District will align with any changes to the mask protocols as determined by local health and safety orders.



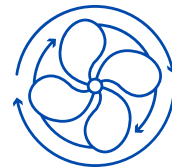


VOLUNTEERS

# Volunteers at School

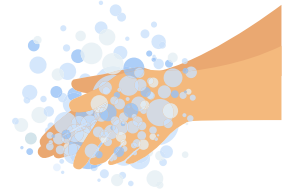
SMFCSD is glad to welcome volunteers and service providers to school. All classroom volunteers will be asked to affirm their vaccination status prior to entering a classroom or provide a negative test result. Schools will continue to emphasize the importance of staying home when sick. Anyone, including visitors, who has symptoms of infectious illness, such as flu or COVID-19, should stay home.

## Ventilation



Effective ventilation and filtration can reduce the long-range airborne transmission of COVID-19 and other respiratory Infections in the air by over 90 percent. SMFCSD continues to focus on HVAC improvements to allow for improved air quality districtwide. Ventilation will be optimized by exploring outdoor learning options when possible.

# Hygiene/Handwashing



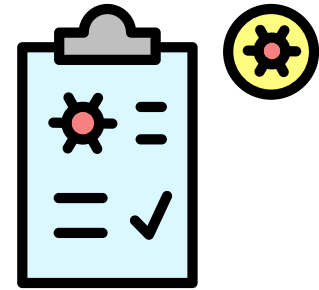
Schools will promote proper hand hygiene including hand washing with soap and water for at least 20 seconds, avoiding contact with one's eyes, nose, and mouth, and covering coughs and sneezes among students and staff will help to maintain a healthy school environment.

# Cleaning



Regular cleaning measures will help to ensure the health and well-being of staff and students. Classrooms and common areas will be cleaned daily and additional deep cleaning and disinfecting will be utilized as needed.

# Case Reporting



The current COVID-19 positivity rate in San Mateo County is under 15%. Students and staff are asked to stay home if they are sick or symptomatic and notify their school office. This is a crucial preventative measure in maintaining safety at school.

Schools will notify close contacts when they are informed that someone in the school community has tested positive. The contact tracing process is different in 2022-2023 and schools will generate a schoolwide letter. Parents with questions about the close contact letters are encouraged to contact Suzi Riley Coordinator of Student Health with the SMFCSD Student Services Department via email at [sriley@smfcsd.net](mailto:sriley@smfcsd.net). For information on positive case data, visit the San Mateo County dashboard.

[For more information visit: CA Safe Schools for ALL](#)