

Catlin Gabel 2021-2022

# SUMMER IMPACT REPORT

*Gratitude & Celebration*



## Greetings From Campus!



In this past school year, 762 donors contributed over \$2.1 million in gifts allowing the school to continue to flourish during a year of great challenge and uncertainty. This is the first time in recent memory that we have reached 100% of our goal by mid-June. On behalf of the Catlin Gabel School, thank you for your generous support.

This was a remarkable year in many ways. What most stands out to me is the adaptability and resilience of every member of our community. I have witnessed so much growth, perseverance, and herculean efforts to not only get through the year—but to do so while being mindful of balance and setting a healthy example for our students.

Whether you gave to the Catlin Gabel Fund, established a legacy endowment, or supported any number of special projects, your gifts directly benefited our people, programs, and campus. Your investment in Catlin Gabel helped enhance the arts, athletics, professional development for faculty, plus the health and safety of our students and campus.

This publication highlights a report of your generosity. You made a difference, and we hope you will continue to support Catlin Gabel's mission to inspire and empower young people to learn, grow, and make a positive change in the world.

Sincerely,

*Nicole Rinetti-Clawson*

**"You made a difference,  
and we hope  
you will  
continue  
to support  
Catlin Gabel's  
mission to  
inspire and  
empower  
young people  
to learn, grow,  
and make a  
positive change  
in the world."**

# CG Fund Annual Donors

We are a community that strives to see each student for who they are and who they can become. We approach each day and every class, rehearsal, lab, and practice with the belief that, given access to the right resources, all students have the ability to thrive. To support this ideal, we take a leap of faith every year knowing that the revenue raised from tuition and the draw from our endowment will not cover all of the school's fundamental expenses. We count on the Catlin Gabel Fund to fill the gap. Name any aspect of school life, and you can be assured that donors to the Catlin Gabel Fund help make it possible every year.

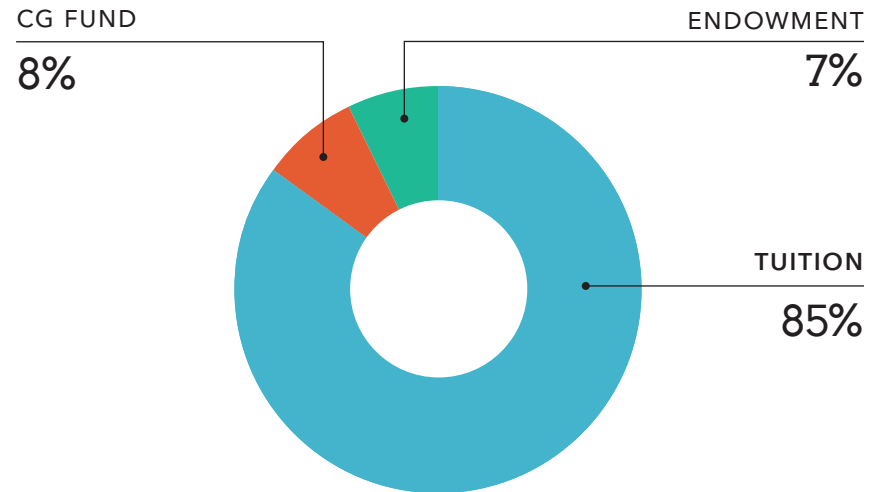
TRUSTEES	19	\$ 289,041
CURRENT PARENTS / GUARDIANS	385	\$ 868,580
GRANDPARENTS	79	\$ 199,297
ALUMNI	123	\$ 294,635
EMPLOYEES AND FRIENDS	156	\$ 160,977
ORGANIZATIONS	59	\$ 289,879
	762	\$ 2,102,408
TOTAL DONORS *		TOTAL GIFTS *

\* These numbers are based on data as of June 16, 2022

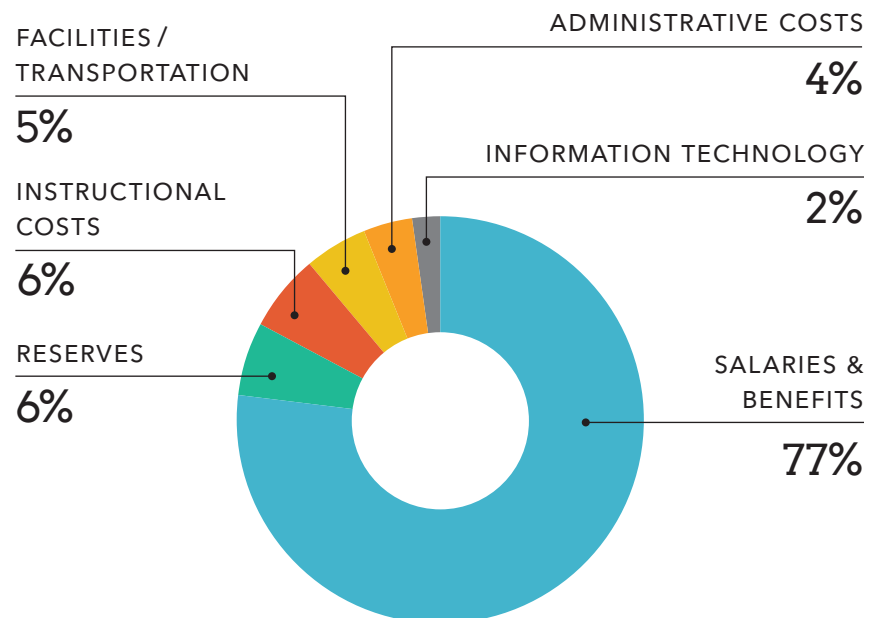
## CG Fund At-A-Glance

Our most sincere thanks to you for continuing to prioritize the values of Catlin Gabel's progressive education and providing a space for our students to thrive. Reaching our annual goal within the school year is no small feat and we certainly couldn't have done it without our community. Thank you for providing this unprecedented support. You can see in these graphs a breakdown of the many ways you supported the school.

### Where the Dollars Came From



### Where the Dollars Went





*Thank you for  
your commitment  
to the school!*

