

# Ridge View Elementary School

Project Update | Kennewick School District



May 31, 2022

# Kennewick School District - Ridge View Elementary School

| Project               | 2021                       |     |                            |                   |                            |     | 2022 |     |                            |                       |     |         |              |     |      |     |     |     | 2023 |     |     |       |     |      |      |     |      |            |         |               |
|-----------------------|----------------------------|-----|----------------------------|-------------------|----------------------------|-----|------|-----|----------------------------|-----------------------|-----|---------|--------------|-----|------|-----|-----|-----|------|-----|-----|-------|-----|------|------|-----|------|------------|---------|---------------|
|                       | JULY                       | AUG | SEPT                       | OCT               | NOV                        | DEC | JAN  | FEB | MAR                        | APRIL                 | MAY | JUNE    | JULY         | AUG | SEPT | OCT | NOV | DEC | JAN  | FEB | MAR | APRIL | MAY | JUNE | JULY | AUG | SEPT | OCT        | NOV     | DEC           |
| Ridge View Elementary |                            |     |                            |                   |                            |     |      |     |                            |                       |     |         |              |     |      |     |     |     |      |     |     |       |     |      |      |     |      |            |         |               |
|                       | ES                         | SD  | DD                         | CD                |                            |     | CR   | AHJ | BID                        | 15 MONTH CONSTRUCTION |     |         |              |     |      |     |     |     |      |     |     |       |     |      |      |     |      |            |         |               |
| D-Form Milestones     | D-1                        |     |                            | Value Engineering |                            |     |      |     | D-5/D-6                    |                       |     | D-7/D-8 | D-9/D-10     |     |      |     |     |     |      |     |     |       |     |      |      |     |      | Punch List | Move In | D-11/D-12 (1) |
| School Board Reviews  | ES 1st Read<br>ES 2nd Read |     | SD 1st Read<br>SD 2nd Read |                   | DD 1st Read<br>DD 2nd Read |     |      |     | CD 1st Read<br>CD 2nd Read |                       |     |         | OSPI Funding |     |      |     |     |     |      |     |     |       |     |      |      |     |      |            |         |               |

General Notes:

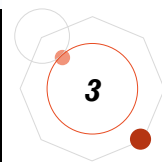
- 1) Do not open bids prior to receiving D-8.
- 2) Do not award the General Contract prior to receiving D-10.
- 3) OSPI funds are guaranteed with D-10.
- 4) 8 Weeks ADVISED between OSPI Fund Release to Opening Bids.



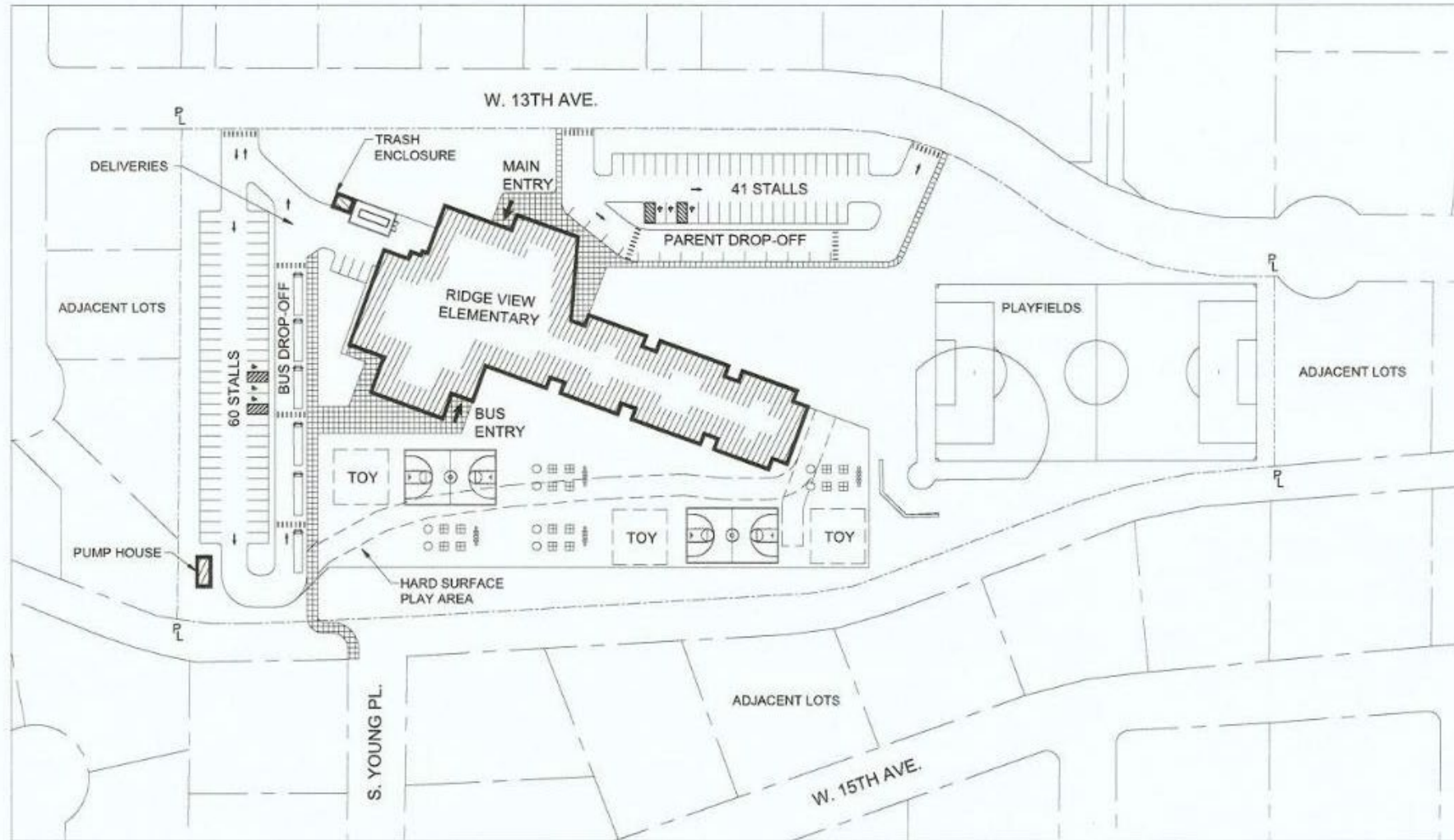




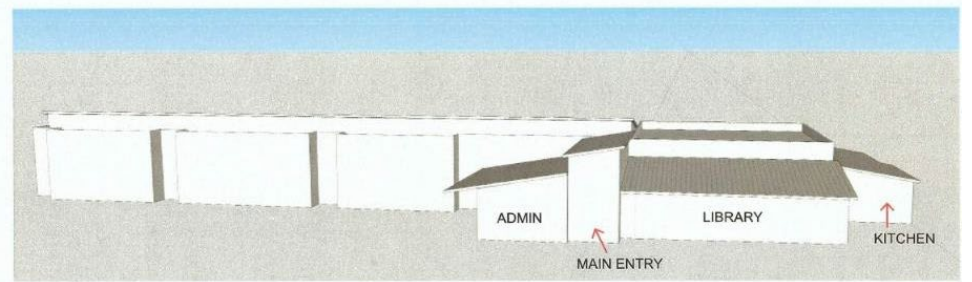
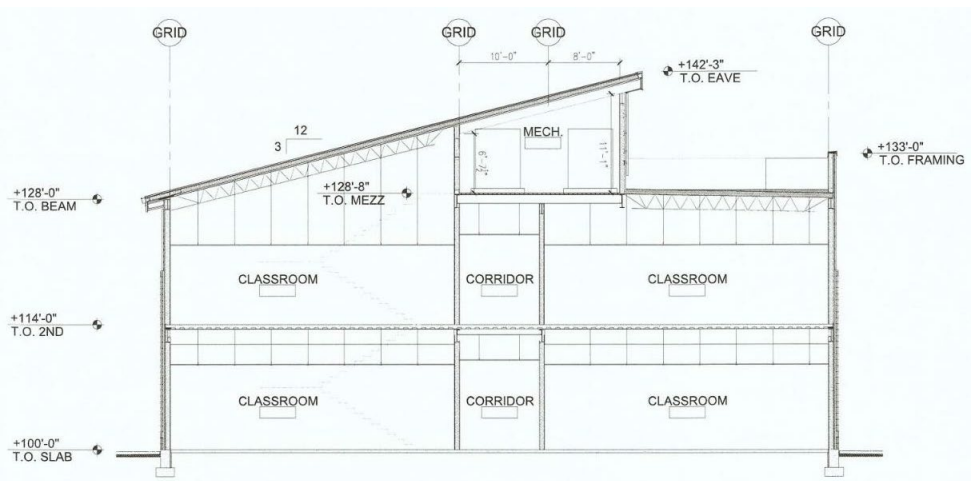
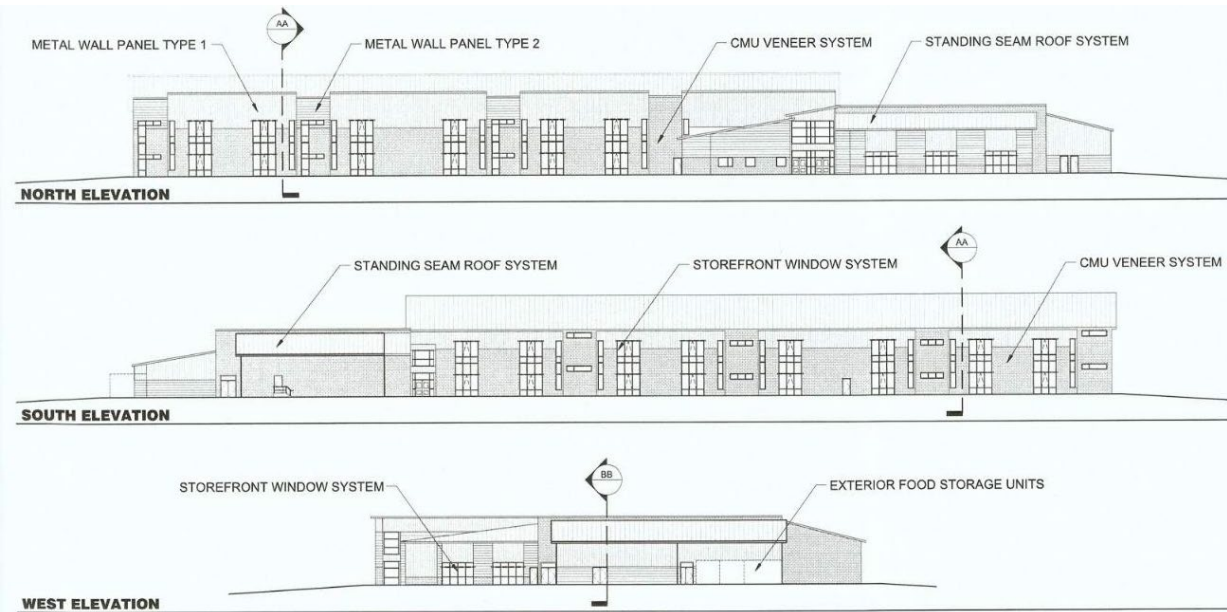
# Project Location



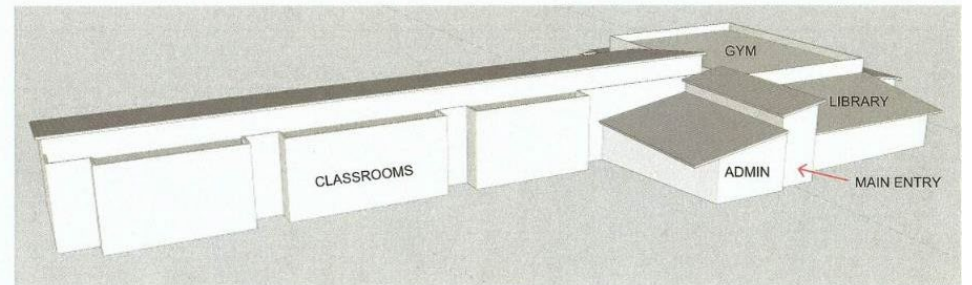




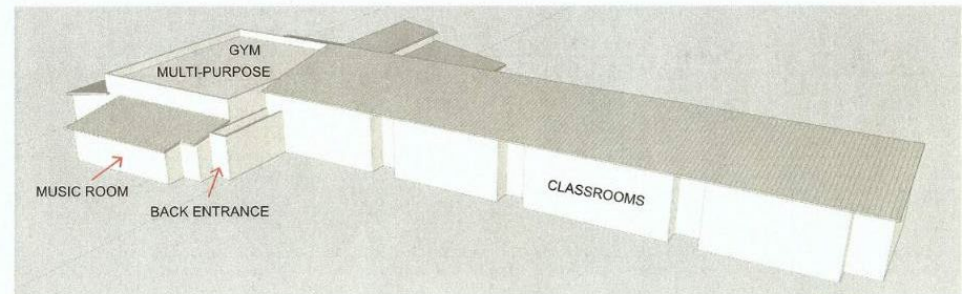
# Early Concept



Front Entrance



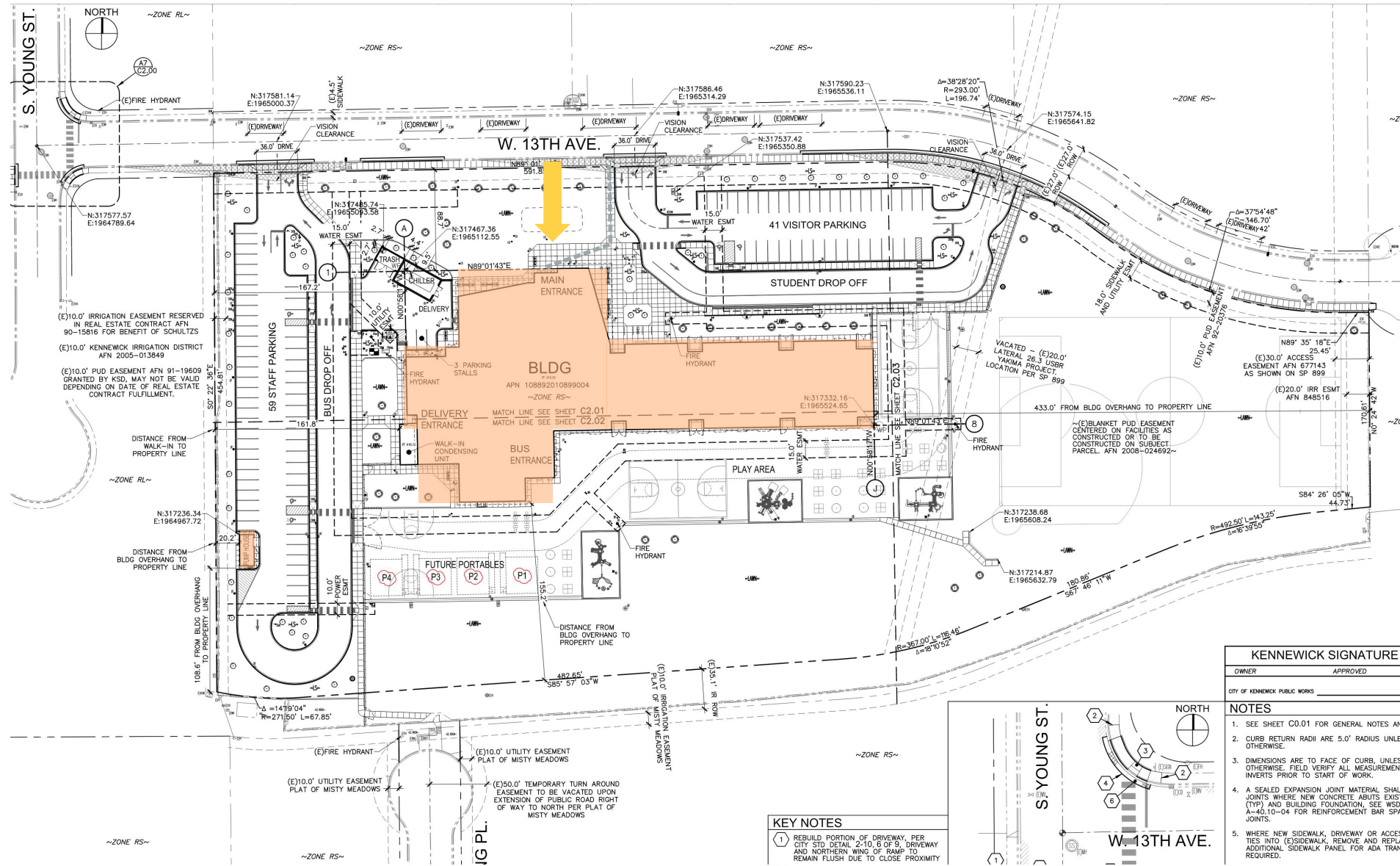
Classroom Wing



Back Entrance

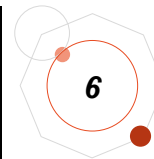
# Early Concept





# Final Design

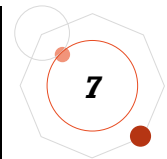
North ↑



Existing RVE: 44,473 square feet  
New RVE: 61,200 square feet



# Final Design

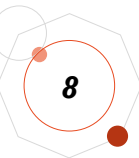






# Final Design

North ↑







View From  
South Young Place

# Final Design





Looking Southwest



Looking South

# Final Design



# Thank you!

# Questions?