

Brownsville Independent School District
Records Management & Recycling
Pounds Recycled by Month

Loc	Campus / Department	July 2021	August 2021	September 2021	October 2021	November 2021	December 2021	January 2022	February 2022	March 2022	April 2022	May 2022	June 2022	Total
001	Hanna HS	1,650	1,900	1,600	1,600	1,500	1,000	1,800	1,400	1,600	2,000	1,450	1,350	18,850
007	Lopez HS	1,300	3,300	2,400	2,200	1,900	1,200	2,050	2,200	1,700	2,000	2,700	2,100	25,050
003	Pace HS	1,400	2,100	3,200	1,850	2,200	1,050	3,000	3,350	1,750	2,400	2,700	1,950	26,950
002	Porter HS	1,950	4,050	3,900	3,250	3,900	2,050	3,550	2,450	3,150	2,750	2,900	3,250	37,150
004	Rivera HS	1,150	3,500	3,650	2,250	2,700	2,050	2,900	3,000	2,750	3,850	4,150	3,750	35,700
009	Veterans HS	2,400	2,850	2,850	2,150	2,900	1,450	3,500	2,800	1,950	3,000	2,800	1,550	30,200
Total pounds - High Schools		9,850	17,700	17,600	13,300	15,100	8,800	16,800	15,200	12,900	16,000	16,700	13,950	173,900

Loc	Campus / Department	July 2021	August 2021	September 2021	October 2021	November 2021	December 2021	January 2022	February 2022	March 2022	April 2022	May 2022	June 2022	Total
008	B'ville Early College HS*	700	800	600	400	800	250	450	450	600	1,200	750	700	7,700
033	B'ville Academic Center	500	1,550	1,300	1,450	1,400	1,000	1,650	1,600	1,400	1,550	2,250	1,300	16,950
006	B'ville Learning Academy	550	1,200	1,050	1,000	1,200	550	750	1,050	1,000	1,000	750	600	10,700
127	Lincoln Park School	400	750	700	800	700	200	1,000	950	900	1,650	950	1,150	10,150
Total pounds - Alternative Schools		2,150	4,300	3,650	3,650	4,100	2,000	3,850	4,050	3,900	5,400	4,700	3,750	45,500

Loc	Campus / Department	July 2021	August 2021	September 2021	October 2021	November 2021	December 2021	January 2022	February 2022	March 2022	April 2022	May 2022	June 2022	Total
048	Besteiro MS	800	1,700	1,500	1,000	750	250	1,050	650	700	850	800	1,200	11,250
043	Faulk MS	550	1,950	2,800	1,700	2,250	1,600	2,150	2,600	2,000	2,900	2,200	1,750	24,450
053	Garcia MS	1,250	2,100	2,100	1,800	2,050	1,300	2,100	1,550	2,250	2,300	2,900	2,000	23,700
051	Lucio MS	450	1,450	2,450	1,400	1,650	1,250	1,700	2,200	1,500	2,900	1,900	1,400	20,250
055	Manzano MS	1,050	1,750	1,050	1,650	1,800	1,100	1,900	2,400	1,800	2,400	2,800	1,750	21,450
045	Oliveira MS	1,100	1,450	2,800	2,100	2,250	2,000	2,100	1,500	1,700	2,200	2,200	2,350	23,750
046	Perkins MS	800	1,950	2,400	1,500	1,450	600	2,250	1,700	1,800	2,700	1,900	1,050	20,100
044	Stell MS	725	2,025	1,500	1,700	1,400	1,100	1,950	1,000	1,450	2,200	2,250	1,500	18,800
054	Stillman MS	1,150	2,350	2,200	2,200	2,025	1,000	2,350	2,400	2,200	2,600	3,000	1,300	24,775
047	Vela MS	700	2,100	1,600	800	1,200	800	1,100	1,100	1,150	1,000	1,200	1,300	14,050
Total pounds - Middle Schools		8,575	18,825	20,400	15,850	16,825	11,000	18,650	17,100	16,550	22,050	21,150	15,600	202,575

Loc	Hanna Cluster	July 2021	August 2021	September 2021	October 2021	November 2021	December 2021	January 2022	February 2022	March 2022	April 2022	May 2022	June 2022	Total
128	Burns ES	550	1,700	1,700	1,050	1,500	1,200	950	1,500	1,400	1,000	1,500	975	15,025
123	Egly ES	775	3,050	2,800	2,600	2,450	1,600	2,100	2,500	1,700	1,750	2,400	1,250	24,975
134	Hudson ES	950	1,850	2,000	1,750	1,850	1,600	1,750	1,900	2,200	2,550	2,200	1,250	21,850
137	Paredes ES	250	2,700	2,050	1,800	1,950	1,250	1,950	1,550	850	1,750	2,150	1,400	19,650
121	Perez ES	1,950	2,350	2,200	1,800	2,250	1,800	2,400	1,900	1,600	2,900	3,400	2,150	26,700

Loc	Pace Cluster	July 2021	August 2021	September 2021	October 2021	November 2021	December 2021	January 2022	February 2022	March 2022	April 2022	May 2022	June 2022	Total
135	Benavides ES	1,150	2,350	2,450	1,700	1,850	1,400	2,200	2,400	2,200	2,700	2,800	1,050	24,250
106	Garden Park ES	950	1,550	1,800	1,450	1,700	650	1,000	1,100	1,050	1,300	1,800	550	14,900
143	Keller ES	900	2,700	2,500	2,000	1,625	1,000	1,850	1,600	1,800	2,450	2,400	1,400	22,225
104	Martin ES	550	2,450	2,000	1,350	2,050	1,000	1,950	800	1,250	2,500	1,650	1,300	18,850
139	Ortiz ES	750	2,650	1,850	1,100	1,450	850	1,000	1,300	1,300	1,500	1,300	1,200	16,250
110	Russell ES	1,850	3,500	2,600	1,450	2,200	1,100	1,800	2,200	2,300	1,900	1,550	1,750	24,200

Loc	Rivera Cluster	July 2021	August 2021	September 2021	October 2021	November 2021	December 2021	January 2022	February 2022	March 2022	April 2022	May 2022	June 2022	Total
144	Breeden ES	1,950	2,150	3,000	1,900	1,650	1,400	2,000	1,600	1,650	2,200	1,800	1,250	22,550
136	Champion ES	550	2,250	1,700	1,550	2,650	1,200	2,050	1,500	1,500	2,050	1,800	900	19,700
138	Gallegos ES	550	1,750	1,450	1,500	1,650	1,200	1,450	1,400	1,300	2,150	1,600	750	16,750
130	Gonzalez ES	350	2,700	2,100	2,250	1,850	1,100	1,900	1,550	1,350	1,500	2,500	1,750	20,900
141	Pena ES	800	2,300	1,900	1,550	1,400	1,200	1,900	1,550	1,750	2,100	2,500	1,700	20,650
126	Vermillion ES	1,900	2,400	2,150	1,850	1,750	1,300	2,300	2,300	2,300	2,450	2,200	800	23,700

Loc	Lopez Cluster	July 2021	August 2021	September 2021	October 2021	November 2021	December 2021	January 2022	February 2022	March 2022	April 2022	May 2022	June 2022	Total
133	Aiken ES	1,650	2,250	2,400	1,500	2,450	1,800	1,700	1,600	1,400	2,800	1,700	1,600	22,850
140	Brite ES	650	1,550	1,800	1,050	1,350	850	1,850	1,350	1,100	2,200	1,400	1,000	16,150
105	El Jardin ES	350	1,500	3,400	1,650	600	750	750	1,200	950	1,250	1,000	1,000	14,400
124	Garza ES	350	1,650	700	700	700	750	1,250	850	950	1,500	1,450	1,300	12,150
129	Morningside ES	600	3,900	2,200	1,500	2,050	1,200	1,600	1,700	1,050	2,800	2,000	950	21,550
122	Palm Grove ES	550	1,600	1,150	1,250	1,000	550	1,400	1,400	950	1,350	1,300	1,150	13,650
131	Southmost ES	1,050	2,050	2,200	1,050	1,700	850	1,950	1,950	1,650	2,700	1,800	1,650	20,600

**Brownsville Independent School District
Records Management & Recycling
Pounds Recycled by Month**

Loc	Porter Cluster	July 2021	August 2021	September 2021	October 2021	November 2021	December 2021	January 2022	February 2022	March 2022	April 2022	May 2022	June 2022	Total
101	Canales ES	500	1,300	2,000	1,200	550	1,050	1,200	1,500	1,000	1,850	1,850	1,300	15,300
115	Castaneda ES	1,700	2,150	1,800	1,900	2,100	1,400	1,550	1,500	1,500	1,900	1,800	1,750	21,050
102	Cromack ES	500	800	250	550	550	200	800	500	650	600	1,150	1,150	7,700
120	Del Castillo ES	1,050	1,900	800	450	600	400	650	750	800	550	400	1,200	9,550
108	Putegnat ES	900	2,350	1,550	1,150	1,550	900	450	1,500	1,500	1,650	1,500	750	15,750
111	Sharp ES	900	1,700	1,500	1,600	1,900	1,000	2,400	2,600	1,800	2,800	2,900	1,650	22,750
112	Skinner ES	525	1,950	850	900	1,000	700	950	950	800	1,100	1,200	500	11,425

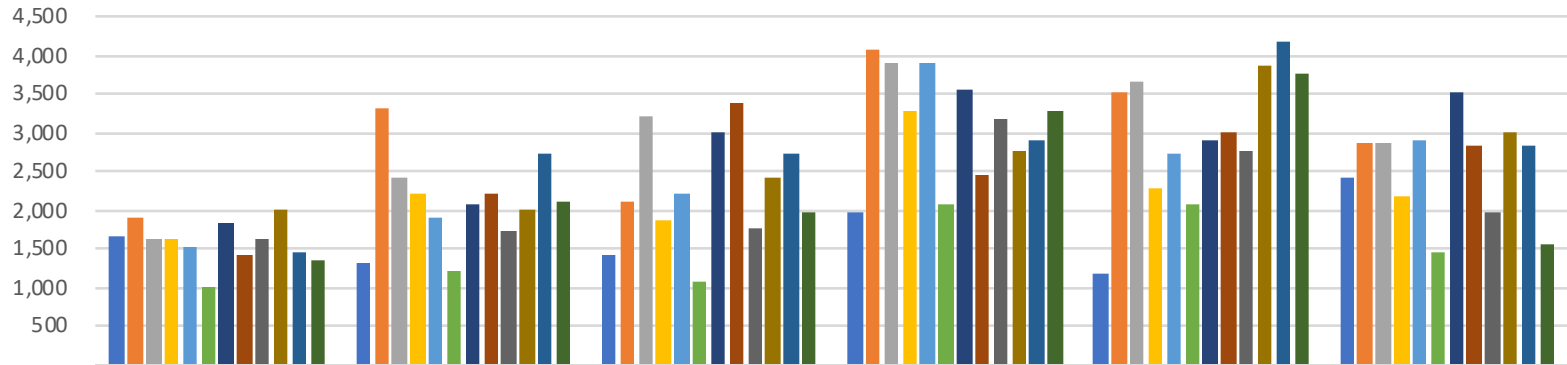
Loc	Veterans Memorial Cluster	July 2021	August 2021	September 2021	October 2021	November 2021	December 2021	January 2022	February 2022	March 2022	April 2022	May 2022	June 2022	Total
142	Pullam ES	1,050	2,450	2,200	1,100	1,850	1,400	2,100	2,300	1,800	2,800	2,200	800	22,050
117	Villa Nueva ES	800	1,550	1,500	1,150	1,225	700	1,150	900	850	850	1,350	50	12,075
132	Yturria ES	1,600	3,050	2,800	2,200	2,025	1,200	1,650	2,300	1,700	1,850	2,200	900	23,475
Total pounds - Elementary Schools		31,450	74,100	65,350	49,550	55,025	36,550	53,950	53,500	47,950	65,300	62,750	40,125	635,600

Loc	Campus / Department	July 2021	August 2021	September 2021	October 2021	November 2021	December 2021	January 2022	February 2022	March 2022	April 2022	May 2022	June 2022	Total
882	Admin. Bldg. / Food Service	1,450	1,750	1,150	800	1,050	550	275	800	1,400	1,000	1,250	750	12,225
888	Aquatic Center	750	1,050	750	350	550	250	850	500	400	450	700	600	7,200
870	Central Complex (CAB)	550	1,450	1,450	1,450	550	600	1,250	1,050	1,100	1,700	1,300	1,900	14,350
912	Maintenance	900	1,200	1,500	1,300	1,100	950	1,300	1,600	2,000	1,600	1,600	2,000	17,050
915	Palo Alto (Records / Whse)	1,500	1,550	2,000	1,400	1,150	1,100	1,450	1,600	2,000	1,600	1,550	2,000	18,900
890	Special Services	1,300	1,350	1,200	1,200	950	1,100	1,300	1,250	1,100	2,000	2,150	2,100	17,000
918	Technology Services	100	200	150	125	125	150	450	300	325	1,000	375	200	3,500
914	Transportation	1,200	800	1,350	1,150	700	800	1,200	1,000	1,300	1,200	1,100	1,250	13,050
Total pounds - Administration		7,750	9,350	9,550	7,775	6,175	5,500	8,075	8,100	9,625	10,550	10,025	10,800	103,275

Total BISD pounds recycled:		59,775	124,275	116,550	90,125	97,225	63,850	101,325	97,950	90,925	119,300	115,325	84,225	1,160,850
<i>Conversion to tons</i>		<i>29.89</i>	<i>62.14</i>	<i>58.28</i>	<i>45.06</i>	<i>48.61</i>	<i>31.93</i>	<i>50.66</i>	<i>48.98</i>	<i>45.46</i>	<i>59.65</i>	<i>57.66</i>	<i>42.11</i>	<i>580.43</i>

Brownsville Independent School District Records Management & Recycling Department

Pounds Recycled by Month - Early College High Schools

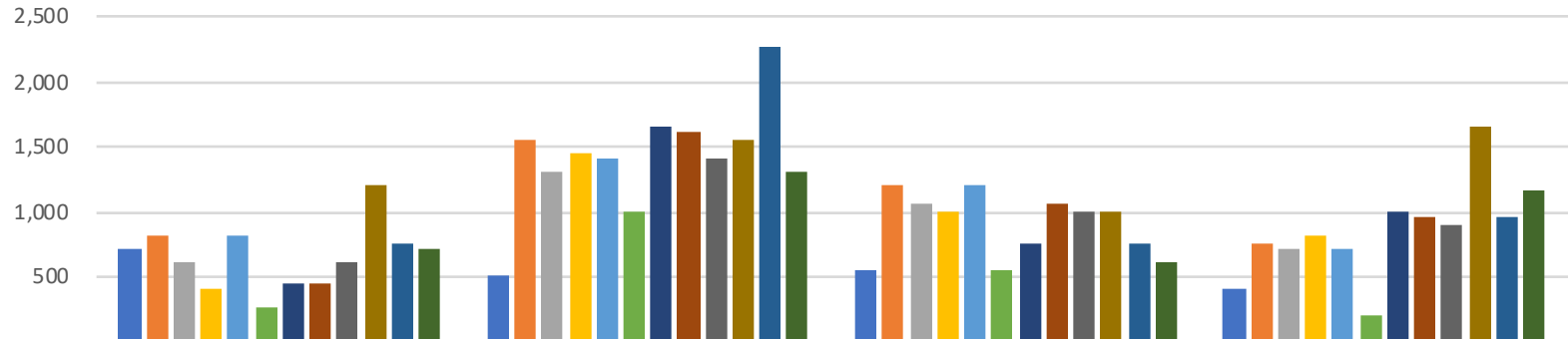


	Hanna HS 001	Lopez HS 007	Pace HS 003	Porter HS 002	Rivera HS 004	Veterans HS 009
July 2021	1,650	1,300	1,400	1,950	1,150	2,400
August 2021	1,900	3,300	2,100	4,050	3,500	2,850
September 2021	1,600	2,400	3,200	3,900	3,650	2,850
October 2021	1,600	2,200	1,850	3,250	2,250	2,150
November 2021	1,500	1,900	2,200	3,900	2,700	2,900
December 2021	1,000	1,200	1,050	2,050	2,050	1,450
January 2022	1,800	2,050	3,000	3,550	2,900	3,500
February 2022	1,400	2,200	3,350	2,450	3,000	2,800
March 2022	1,600	1,700	1,750	3,150	2,750	1,950
April 2022	2,000	2,000	2,400	2,750	3,850	3,000
May 2022	1,450	2,700	2,700	2,900	4,150	2,800
June 2022	1,350	2,100	1,950	3,250	3,750	1,550

- July 2021
- August 2021
- September 2021
- October 2021
- November 2021
- December 2021
- January 2022
- February 2022
- March 2022
- April 2022
- May 2022
- June 2022

Brownsville Independent School District Records Management & Recycling Department

Pounds Recycled by Month - Alternative Schools



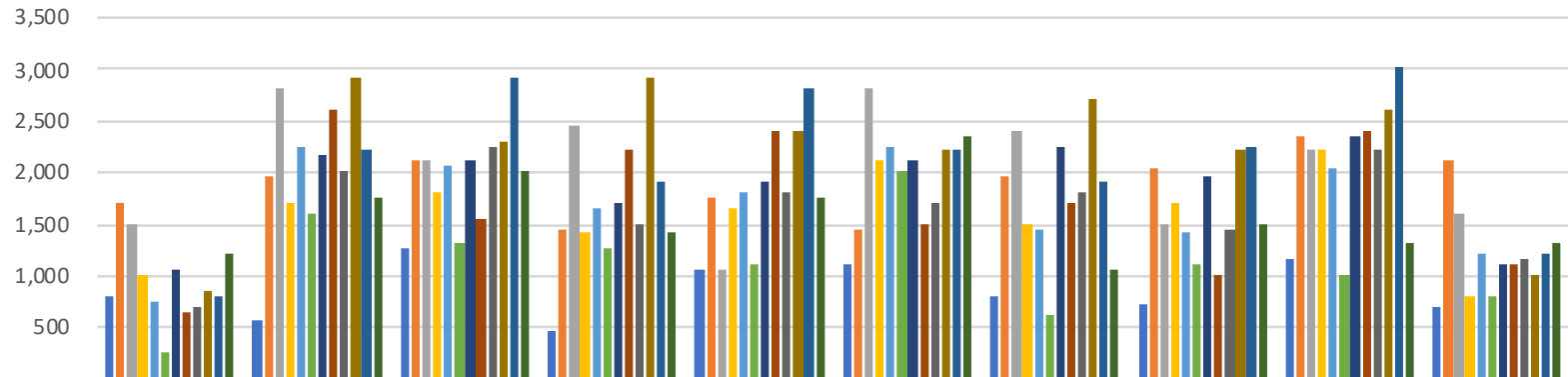
	B'ville Early College HS* 008	B'ville Academic Center 033	B'ville Learning Academy 006	Lincoln Park School 127
July 2021	700	500	550	400
August 2021	800	1,550	1,200	750
September 2021	600	1,300	1,050	700
October 2021	400	1,450	1,000	800
November 2021	800	1,400	1,200	700
December 2021	250	1,000	550	200
January 2022	450	1,650	750	1,000
February 2022	450	1,600	1,050	950
March 2022	600	1,400	1,000	900
April 2022	1,200	1,550	1,000	1,650
May 2022	750	2,250	750	950
June 2022	700	1,300	600	1,150

- July 2021
- August 2021
- September 2021
- October 2021
- November 2021
- December 2021
- January 2022
- February 2022
- March 2022
- April 2022
- May 2022
- June 2022

008 Brownsville ECHS was placed in the Alternative Schools Category because of its student population

Brownsville Independent School District Records Management & Recycling Department

Pounds Recycled by Month - Middle Schools

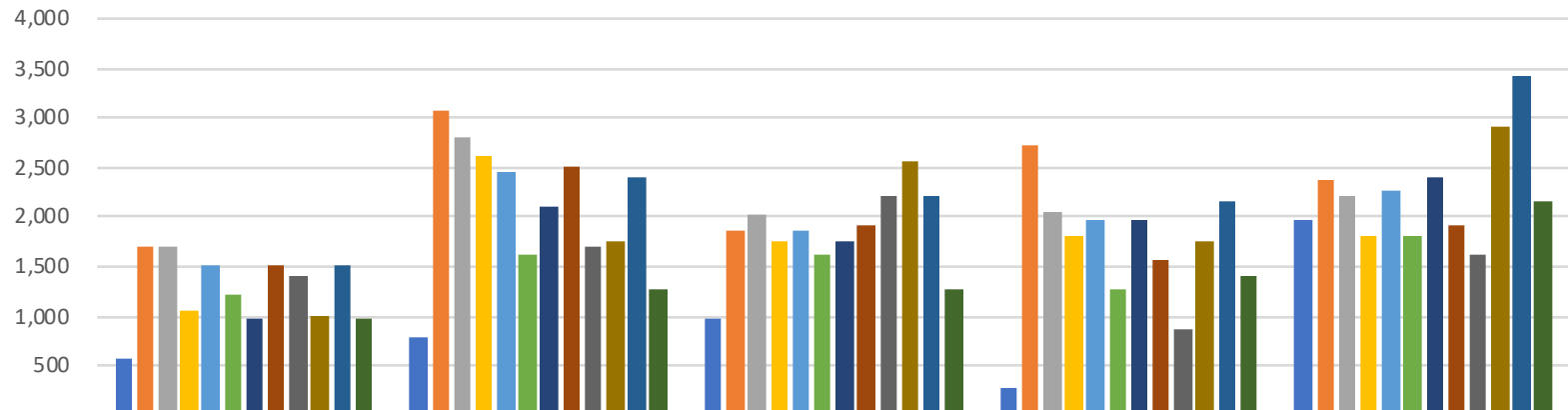


	Besteiro MS 048	Faulk MS 043	Garcia MS 053	Lucio MS 051	Manzano MS 055	Oliveira MS 045	Perkins MS 046	Stell MS 044	Stillman MS 054	Vela MS 047
July 2021	800	550	1,250	450	1,050	1,100	800	725	1,150	700
August 2021	1,700	1,950	2,100	1,450	1,750	1,450	1,950	2,025	2,350	2,100
September 2021	1,500	2,800	2,100	2,450	1,050	2,800	2,400	1,500	2,200	1,600
October 2021	1,000	1,700	1,800	1,400	1,650	2,100	1,500	1,700	2,200	800
November 2021	750	2,250	2,050	1,650	1,800	2,250	1,450	1,400	2,025	1,200
December 2021	250	1,600	1,300	1,250	1,100	2,000	600	1,100	1,000	800
January 2022	1,050	2,150	2,100	1,700	1,900	2,100	2,250	1,950	2,350	1,100
February 2022	650	2,600	1,550	2,200	2,400	1,500	1,700	1,000	2,400	1,100
March 2022	700	2,000	2,250	1,500	1,800	1,700	1,800	1,450	2,200	1,150
April 2022	850	2,900	2,300	2,900	2,400	2,200	2,700	2,200	2,600	1,000
May 2022	800	2,200	2,900	1,900	2,800	2,200	1,900	2,250	3,000	1,200
June 2022	1,200	1,750	2,000	1,400	1,750	2,350	1,050	1,500	1,300	1,300

- July 2021
- August 2021
- September 2021
- October 2021
- November 2021
- December 2021
- January 2022
- February 2022
- March 2022
- April 2022
- May 2022
- June 2022

Brownsville Independent School District Records Management & Recycling Department

Pounds Recycled by Month - Hanna ECHS Cluster

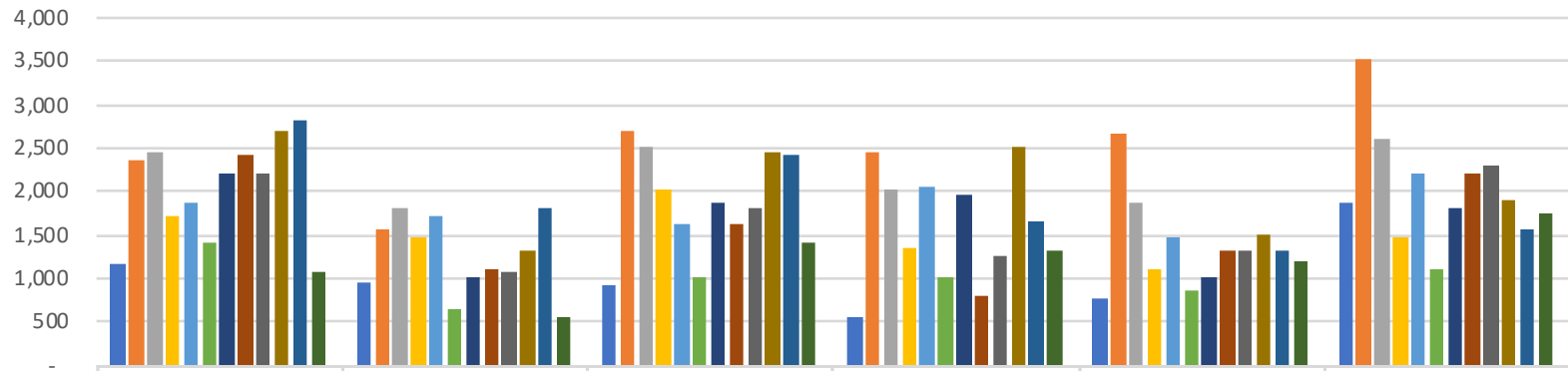


	Burns ES	Egly ES	Hudson ES	Paredes ES	Perez ES
July 2021	550	775	950	250	1,950
August 2021	1,700	3,050	1,850	2,700	2,350
September 2021	1,700	2,800	2,000	2,050	2,200
October 2021	1,050	2,600	1,750	1,800	1,800
November 2021	1,500	2,450	1,850	1,950	2,250
December 2021	1,200	1,600	1,600	1,250	1,800
January 2022	950	2,100	1,750	1,950	2,400
February 2022	1,500	2,500	1,900	1,550	1,900
March 2022	1,400	1,700	2,200	850	1,600
April 2022	1,000	1,750	2,550	1,750	2,900
May 2022	1,500	2,400	2,200	2,150	3,400
June 2022	975	1,250	1,250	1,400	2,150

- July 2021
- August 2021
- September 2021
- October 2021
- November 2021
- December 2021
- January 2022
- February 2022
- March 2022
- April 2022
- May 2022
- June 2022

Brownsville Independent School District Records Management & Recycling Department

Pounds Recycled by Month - Pace ECHS Cluster

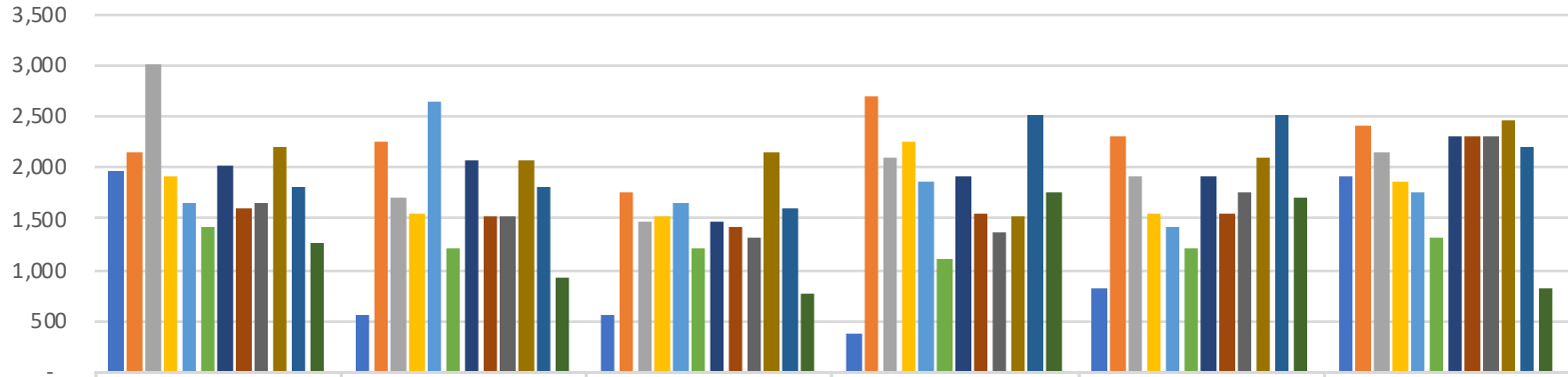


	Benavides ES	Garden Park ES	Keller ES	Martin ES	Ortiz ES	Russell ES
July 2021	135	106	143	104	139	110
August 2021	1,150	950	900	550	750	1,850
September 2021	2,350	1,550	2,700	2,450	2,650	3,500
October 2021	2,450	1,800	2,500	2,000	1,850	2,600
November 2021	1,700	1,450	2,000	1,350	1,100	1,450
December 2021	1,850	1,700	1,625	2,050	1,450	2,200
January 2022	1,400	650	1,000	1,000	850	1,100
February 2022	2,200	1,000	1,850	1,950	1,000	1,800
March 2022	2,400	1,100	1,600	800	1,300	2,200
April 2022	2,200	1,050	1,800	1,250	1,300	2,300
May 2022	2,700	1,300	2,450	2,500	1,500	1,900
June 2022	2,800	1,800	2,400	1,650	1,300	1,550
July 2022	1,050	550	1,400	1,300	1,200	1,750

- July 2021
- August 2021
- September 2021
- October 2021
- November 2021
- December 2021
- January 2022
- February 2022
- March 2022
- April 2022
- May 2022
- June 2022

Brownsville Independent School District Records Management & Recycling Department

Pounds Recycled by Month - Rivera ECHS Cluster

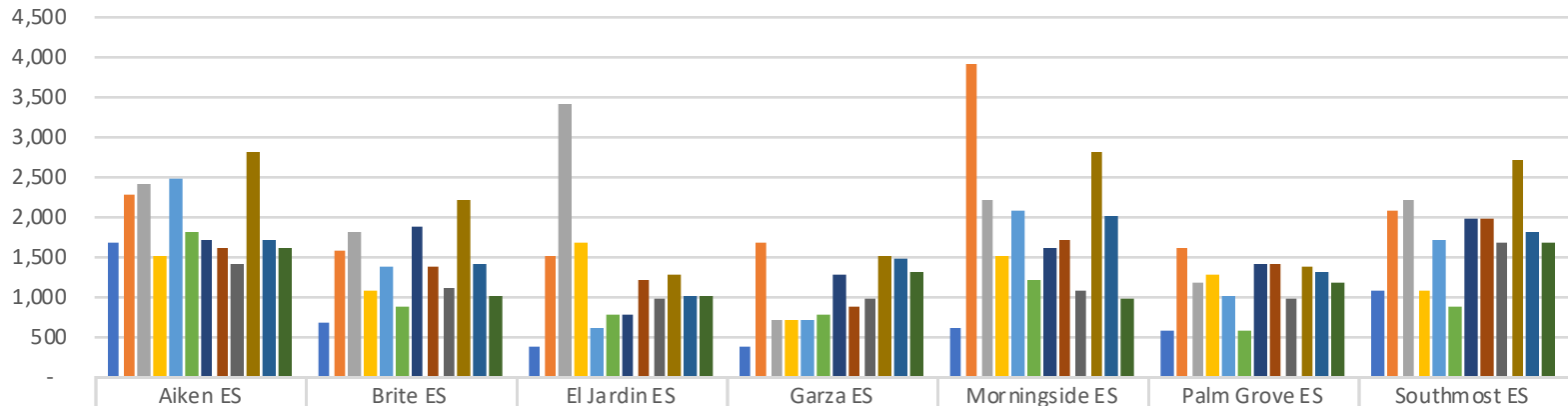


	Breeden ES	Champion ES	Gallegos ES	Gonzalez ES	Pena ES	Vermillion ES
	144	136	138	130	141	126
July 2021	1,950	550	550	350	800	1,900
August 2021	2,150	2,250	1,750	2,700	2,300	2,400
September 2021	3,000	1,700	1,450	2,100	1,900	2,150
October 2021	1,900	1,550	1,500	2,250	1,550	1,850
November 2021	1,650	2,650	1,650	1,850	1,400	1,750
December 2021	1,400	1,200	1,200	1,100	1,200	1,300
January 2022	2,000	2,050	1,450	1,900	1,900	2,300
February 2022	1,600	1,500	1,400	1,550	1,550	2,300
March 2022	1,650	1,500	1,300	1,350	1,750	2,300
April 2022	2,200	2,050	2,150	1,500	2,100	2,450
May 2022	1,800	1,800	1,600	2,500	2,500	2,200
June 2022	1,250	900	750	1,750	1,700	800

- July 2021
- August 2021
- September 2021
- October 2021
- November 2021
- December 2021
- January 2022
- February 2022
- March 2022
- April 2022
- May 2022
- June 2022

Brownsville Independent School District Records Management & Recycling Department

Pounds Recycled by Month - Lopez ECHS Cluster

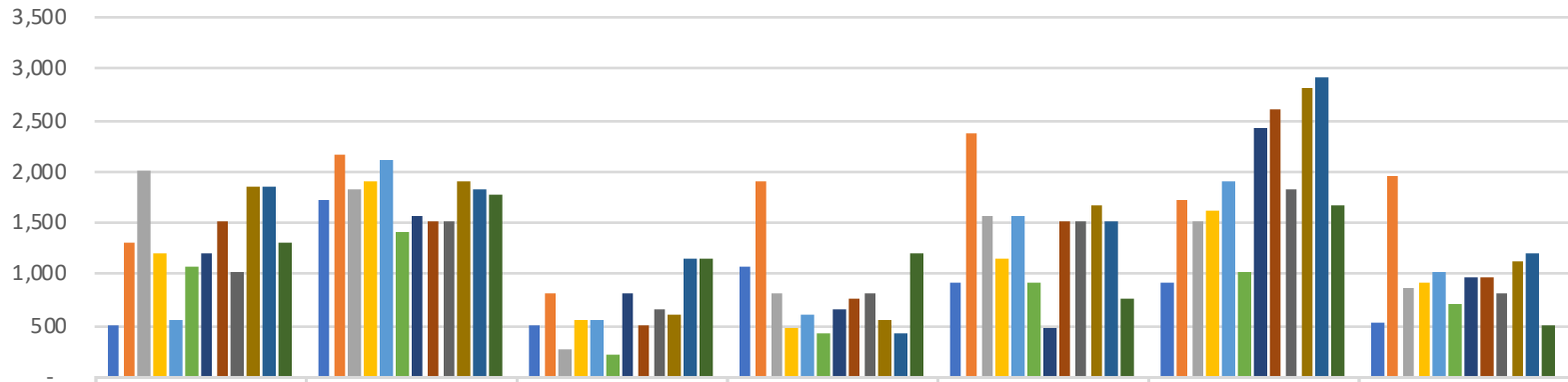


	Aiken ES	Brite ES	El Jardin ES	Garza ES	Morningside ES	Palm Grove ES	Southmost ES
July 2021	1,650	650	350	350	600	550	1,050
August 2021	2,250	1,550	1,500	1,650	3,900	1,600	2,050
September 2021	2,400	1,800	3,400	700	2,200	1,150	2,200
October 2021	1,500	1,050	1,650	700	1,500	1,250	1,050
November 2021	2,450	1,350	600	700	2,050	1,000	1,700
December 2021	1,800	850	750	750	1,200	550	850
January 2022	1,700	1,850	750	1,250	1,600	1,400	1,950
February 2022	1,600	1,350	1,200	850	1,700	1,400	1,950
March 2022	1,400	1,100	950	950	1,050	950	1,650
April 2022	2,800	2,200	1,250	1,500	2,800	1,350	2,700
May 2022	1,700	1,400	1,000	1,450	2,000	1,300	1,800
June 2022	1,600	1,000	1,000	1,300	950	1,150	1,650

- July 2021
- August 2021
- September 2021
- October 2021
- November 2021
- December 2021
- January 2022
- February 2022
- March 2022
- April 2022
- May 2022
- June 2022

Brownsville Independent School District Records Management & Recycling Department

Pounds Recycled by Month - Porter ECHS Cluster

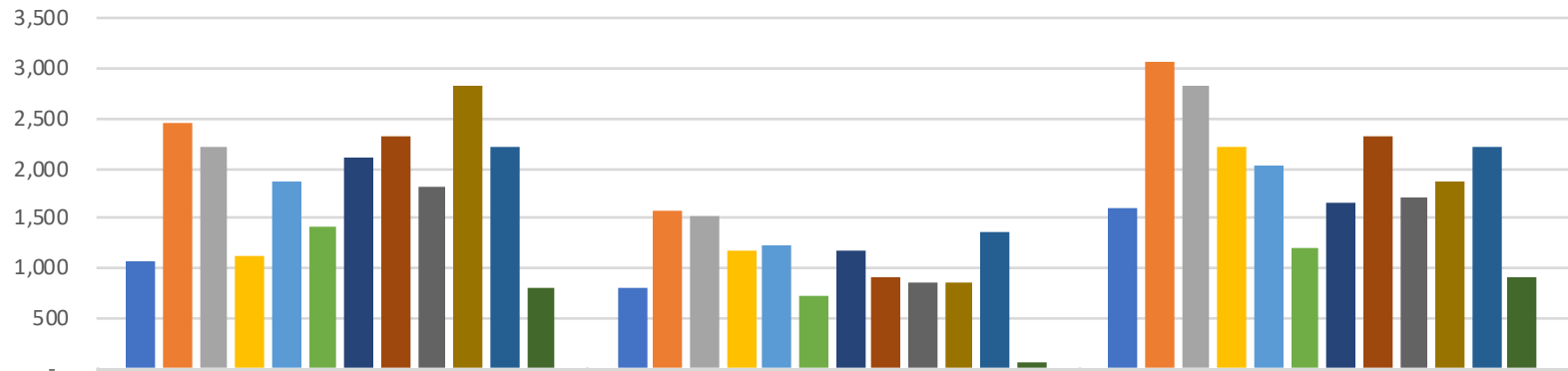


	Canales ES	Castaneda ES	Cromack ES	Del Castillo ES	Putegnat ES	Sharp ES	Skinner ES
July 2021	500	1,700	500	1,050	900	900	525
August 2021	1,300	2,150	800	1,900	2,350	1,700	1,950
September 2021	2,000	1,800	250	800	1,550	1,500	850
October 2021	1,200	1,900	550	450	1,150	1,600	900
November 2021	550	2,100	550	600	1,550	1,900	1,000
December 2021	1,050	1,400	200	400	900	1,000	700
January 2022	1,200	1,550	800	650	450	2,400	950
February 2022	1,500	1,500	500	750	1,500	2,600	950
March 2022	1,000	1,500	650	800	1,500	1,800	800
April 2022	1,850	1,900	600	550	1,650	2,800	1,100
May 2022	1,850	1,800	1,150	400	1,500	2,900	1,200
June 2022	1,300	1,750	1,150	1,200	750	1,650	500

- July 2021
- August 2021
- September 2021
- October 2021
- November 2021
- December 2021
- January 2022
- February 2022
- March 2022
- April 2022
- May 2022
- June 2022

Brownsville Independent School District Records Management & Recycling Department

Pounds Recycled by Month - Veterans Memorial ECHS Cluster

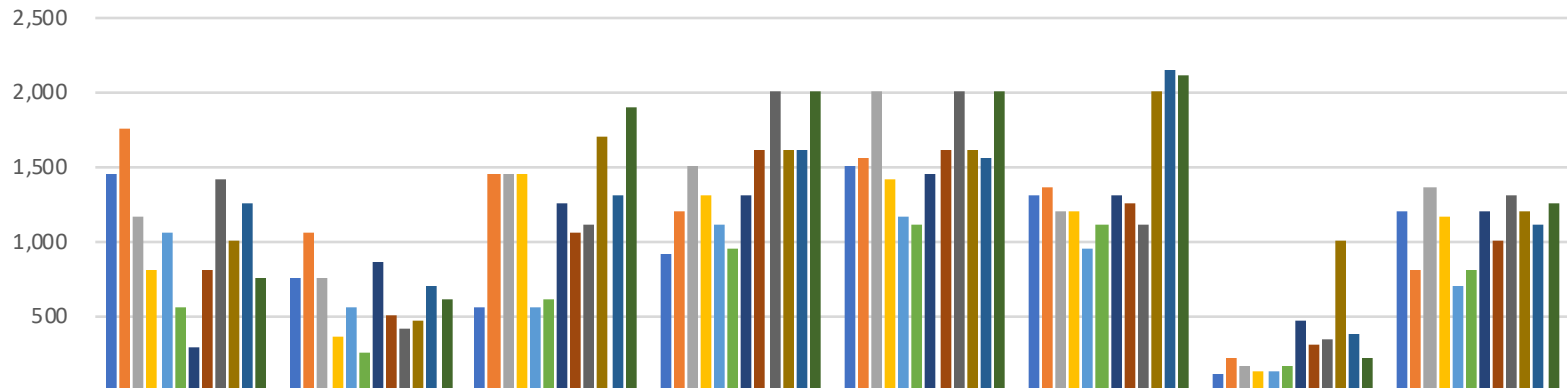


	Pullam ES	Villa Nueva ES	Yturria ES
July 2021	1,050	800	1,600
August 2021	2,450	1,550	3,050
September 2021	2,200	1,500	2,800
October 2021	1,100	1,150	2,200
November 2021	1,850	1,225	2,025
December 2021	1,400	700	1,200
January 2022	2,100	1,150	1,650
February 2022	2,300	900	2,300
March 2022	1,800	850	1,700
April 2022	2,800	850	1,850
May 2022	2,200	1,350	2,200
June 2022	800	50	900

■ July 2021
 ■ August 2021
 ■ September 2021
 ■ October 2021
 ■ November 2021
 ■ December 2021
■ January 2022
 ■ February 2022
 ■ March 2022
 ■ April 2022
 ■ May 2022
 ■ June 2022

Brownsville Independent School District Records Management & Recycling Department

Pounds Recycled by Month - Administrative Buildings



	Admin. Bldg. / Food Service	Aquatic Center	Central Complex (CAB)	Maintenance	Palo Alto (Records / Whse)	Special Services	Technology Services	Transportation
July 2021	1,450	750	550	900	1,500	1,300	100	1,200
August 2021	1,750	1,050	1,450	1,200	1,550	1,350	200	800
September 2021	1,150	750	1,450	1,500	2,000	1,200	150	1,350
October 2021	800	350	1,450	1,300	1,400	1,200	125	1,150
November 2021	1,050	550	550	1,100	1,150	950	125	700
December 2021	550	250	600	950	1,100	1,100	150	800
January 2022	275	850	1,250	1,300	1,450	1,300	450	1,200
February 2022	800	500	1,050	1,600	1,600	1,250	300	1,000
March 2022	1,400	400	1,100	2,000	2,000	1,100	325	1,300
April 2022	1,000	450	1,700	1,600	1,600	2,000	1,000	1,200
May 2022	1,250	700	1,300	1,600	1,550	2,150	375	1,100
June 2022	750	600	1,900	2,000	2,000	2,100	200	1,250

■ July 2021
 ■ August 2021
 ■ September 2021
 ■ October 2021
 ■ November 2021
 ■ December 2021
■ January 2022
 ■ February 2022
 ■ March 2022
 ■ April 2022
 ■ May 2022
 ■ June 2022