



2021-22 Space Center Student Morning Drop Off



- Gym doors open at 8:15AM each morning
 - Walkers, Bike-riders, and Car-riders report to the commons before school.
 - Students will have their student ID on before they enter the building.
 - Students who need to purchase breakfast will be able to do so from 8:15-8:40.
- Any student arriving after 8:40 must enter through the front office doors, accessible in the bus (small) parking lot.

Big Parking Lot- Car Rider Morning Drop Off



Morning Traffic Flow

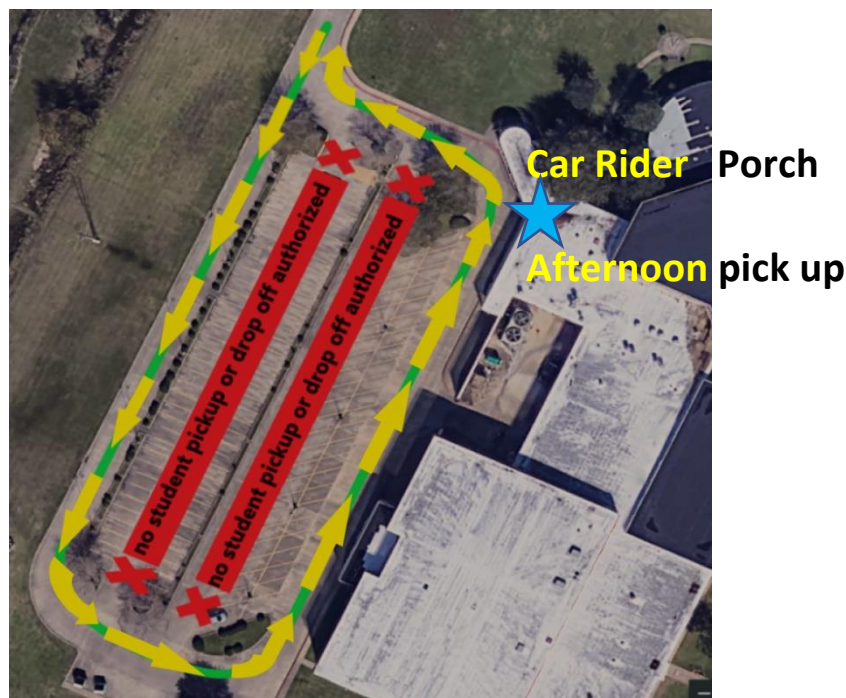
- Please follow the yellow arrows around the perimeter of the big lot to drop off/ pick up your student.
- Do not park in a parking spot to let your student out, this slows down the flow of traffic and prevents teachers from having a parking space.



2021-22 Space Center Student Afternoon Pick Up

Big Parking Lot- Car Rider Afternoon Pick Up

- Space Center will have a staggered release at the end of the school day.
 - Walkers and Bike-riders will release at 4:05, walk down the sidewalk to cross the street with the crossing guard at the stop light on Saturn Lane.
 - Car Riders will be released at 4:07 and will report to the Car Rider Porch for afternoon pick up.



Afternoon Traffic Flow

- Please follow the yellow arrows around the perimeter of the big lot to drop off/pick up your student.
- Do not park. Students will not be allowed to walk out into the parking lot to meet you. This to keep them safe. Many students run out into the parking lot without looking, coming close to being hit by a car.
- If you are checking your student out early, please park in the bus parking (small lot) which is located along Saturn Lane. Please be aware that buses lining up will make entering/leaving the small lot difficult from 3:30-4:15.