

ClearTouch Panel Cheat Sheet

Pens, Remote, Pen Tips (You should have a box behind the panel with the following items. 2 pens, remote, extra HDMI cable, and a small bag with extra pen tips)



Power

1. Press the Power Button to turn the panel on.
2. The panel will boot up. The Clear Touch logo will appear on the screen.
3. Depending on your configuration, either the Android Home Screen will appear, or the Windows Login Screen will Appear.

[REDACTED]



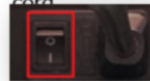
The indicator light will be solid red when the panel is turned off.



The indicator light will be solid white when the panel is on.

The indicator light will alternate red and white when in sleep mode. Simply tap on the screen to wake it up.

If there is no indicator light, check the master Power Switch located underneath the panel, next to the power cord.

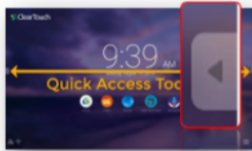


Inputs

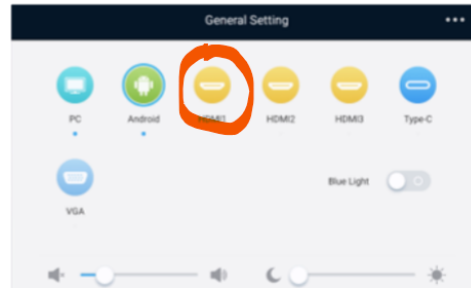
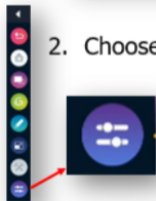
Switching Inputs

Your new Clear Touch Panel has several inputs. This means that you can easily switch from PC to Android, or to any other connected device.

1. Click the Android Quick Access Toolbar located on either side of the Panel.
3. Tap the desired input (PC or Android). Notice the slider for master volume.



2. Choose Settings (Last icon on the bottom).



Note: Call up the General Setting Window by "swiping" up from the bottom middle of the screen (right above the Clear Touch Logo on the frame).

(Default input is set to extended display - this allows you to click and drag the application over to the panel - this way you can work on your teacher computer and the students can see something else on the panel) Think of the panel as a 2nd monitor.

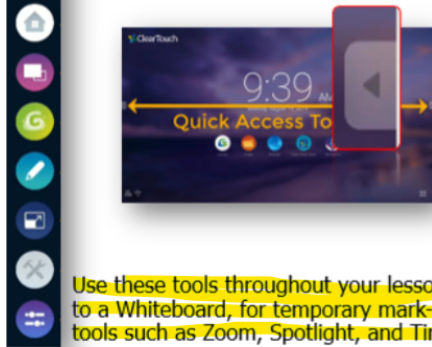
Note

The Panel allows multiple students to touch the panel at one time.

Quick Access Toolbar

Android Quick Access Toolbar

Located on either side of the Clear Touch Panel screen, the Android Quick Access Toolbar is always available, no matter where you are.



Use these tools throughout your lesson for quick access to a Whiteboard, for temporary mark-ups, and additional tools such as Zoom, Spotlight, and Timer.

Tool	Use
	Quick Access Toolbar Located on either side of the panel, click to expand.
	Back (Android OS Only) Clicking this returns you to the previous screen.
	Home Returns you to the Home Screen on Android.
	App Selector (Android OS Only) Allows you to view or close any apps running on Android.
	Canvas App (Android) Opens a basic whiteboard App on Android.
	Annotation Easily mark-up anything displayed on the Clear Touch screen.
	Freeze & Zoom Freezes the screen so you can Zoom in (pinch/zoom gestures).
	Toolbox Access additional tools, such as a Spotlight and Timer.
	General Settings Window (Input Selector) Brings up the window to change input.

****The Canvas App is a simple whiteboard application similar to SMART Notebook.***

You can still use SMART Notebook with the panel

Remote Control and Cleaning the Panel

Remote Control

- Use the **Red Button** to disable touch and any physical buttons.
- The **Green Button** will lock the power, home, setting and volume buttons on the panel
- The **Yellow Button** turns on Sidney and LA time clocks.
- The **Blue Button** takes a screen shot of whatever is on the screen so you can pinch and zoom in.



Cleaning the CTI Panel

- Use a microfiber cloth and use a glass cleaner or mild cleaning solution to clean the Clear Touch Interactive® Digital Display Screen.
- Apply solution onto a clean soft cloth, then wipe the surface. Use a circular motion to avoid smudges and streaks.
- Do NOT apply the cleaning solution directly onto the Clear Touch Interactive® Digital Display screen as this may damage the unit.
- Do NOT use any chemical solvents such as Acidic, Alkali solutions, ammonia, or bleach.