

# South/West Park Elementary School

Grades K-5  
CDS Code 39-75499-6042881

Ramona Soto, Principal  
rasoto@tusd.net

500 West Mount Diablo Road  
Tracy, CA 95376  
(209) 830-3335

<https://southwestpark.tracy.k12.ca.us/>



## SARC

2020-21

School  
Accountability  
Report Card  
Published in 2021-22

## Tracy Unified School District

1875 West Lowell Avenue Tracy, CA 95376 ▪ [www.tracy.k12.ca.us](http://www.tracy.k12.ca.us)

Brian Stephens, Superintendent ▪ [bstephens@tusd.net](mailto:bstephens@tusd.net) ▪ (209) 830-3200



## Principal's Message

Dear students and parents,

Welcome to South/West Park Elementary School—the magnet school for Bilingual Education and the Gifted and Talented Education (GATE) program. We are also a schoolwide Title I project. Students receive specialized instructional programs within their homeroom classroom, as well as daily opportunities to interact and learn with students from other programs.

The School Accountability Report Card (SARC) is our opportunity to share important information about our school with you. It is issued annually and provides a variety of information about South/West Park School. We hope you enjoy learning about our school and encourage you to call either campus if you would like more information.

Visit South/West Park Elementary School's website at <https://southwestpark.tracy.k12.ca.us/> or on Facebook at [www.facebook.com/SouthWestParkElementarySchool](https://www.facebook.com/SouthWestParkElementarySchool) for school updates, events around campus and special announcements.

Sincerely,

Ramona Soto, Principal

## School Mission Statement

The mission of South/West Park School is to educate, motivate and support all students to be successful lifelong learners and productive citizens.

## School Description

South/West Park Elementary School serves as the magnet school for Bilingual Education and the GATE program. We are also a schoolwide Title I project.

We provide students specialized instructional programs within their homeroom classroom, as well as daily opportunities to interact and learn with students from other programs.

## Parental Involvement

Our school has a very active School Site Council that serves as an advisory committee to categorical programs. Elected parents represent the various programs at our school (GATE, Bilingual Education, Title I). We also have an active parent-teacher organization, the South/West Park Parent Club, which supports schoolwide activities. In addition to these two schoolwide parent committees, we have program-specific parent-advisory committees for the state preschool, and the bilingual and GATE programs.

For more information on how to become involved at the school, please contact Principal Ramona Soto at (209) 830-3335.

## School Safety

The school safety plan is incorporated into the school plan and includes activities that support student and staff safety as well as activities that promote a respectful, caring environment. The plan includes information related to emergency procedures as well as curriculum and discipline information related to school safety.

On a schoolwide survey of school safety conducted in the spring, we exceed the goal of 75% for school safety. We have an average of 85% in agreement with safety. This is an increase in the percentage satisfaction from last school year.

The school safety plan was last reviewed, updated and discussed with the school faculty in March 2022.



## School Accountability Report Card

In accordance with state and federal requirements, the School Accountability Report Card (SARC) is put forth annually by all public schools as a tool for parents and interested parties to stay informed of the school's progress, test scores and achievements.

## District Mission Statement

Tracy Unified School District prepares our diverse student population to be college and career ready for the 21st century by providing a quality-learning environment in safe, modern facilities equipped with the latest technological tools. Our culturally proficient world-class staff empowers students to reach their fullest potential and prepares students to solve real-world problems by utilizing best instructional practices and collaborating with the community, businesses and institutions of higher learning.

## District Vision Statement

All students in Tracy Unified School District will become lifelong learners, responsible citizens, and leaders in the 21st century.

## Board of Trustees

Simran Kaur, *President*

Steve Abercrombie, *Vice President*

Ana Blanco, *Board Clerk*

Lori Souza, *Member*

Ameni Alexander, *Member*

Nathalia Hughes Erskine, *Member*

Zachary Hoffert, *Member*

## Enrollment by Student Group

### Demographics

#### 2020-21 School Year

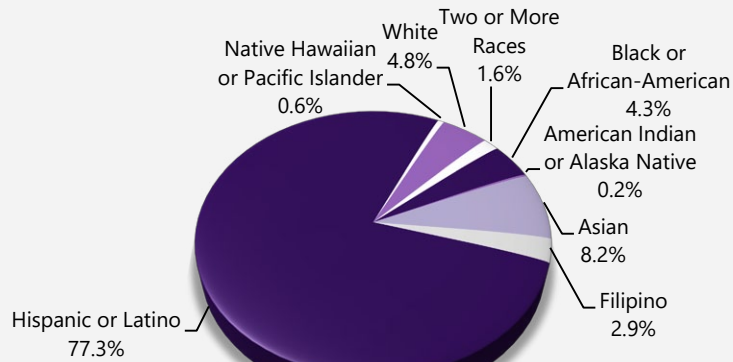
<b>Female</b>	50.90%
<b>Male</b>	49.10%
<b>Non-Binary</b>	0.00%
<b>English learners</b>	63.30%
<b>Foster youth</b>	0.00%
<b>Homeless</b>	8.80%
<b>Migrant</b>	0.50%
<b>Socioeconomically Disadvantaged</b>	76.30%
<b>Students with Disabilities</b>	6.70%

## Enrollment by Student Group

The total enrollment at the school was 807 students for the 2020-21 school year. The pie chart displays the percentage of students enrolled in each group.

### Demographics

2020-21 School Year



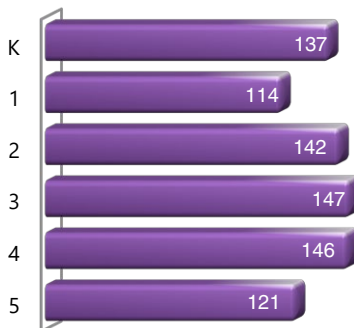
## Class Size Distribution

The bar graph displays the three-year data for average class size, and the table displays the three-year data for the number of classrooms by size. The number of classes indicates how many classrooms fall into each size category (a range of total students per classroom). At the secondary school level, this information is reported by subject area rather than grade level.

## Enrollment by Grade

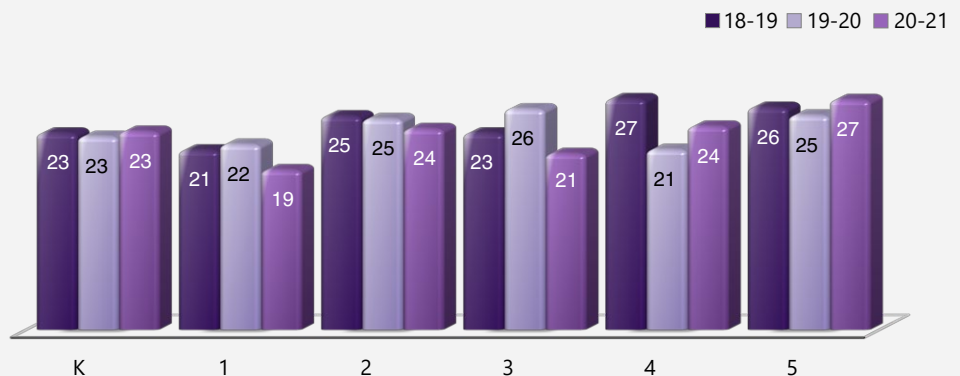
The bar graph displays the total number of students enrolled in each grade for the 2020-21 school year.

### 2020-21 Enrollment by Grade



### Average Class Size

Three-Year Data



### Number of Classrooms by Size

Three-Year Data

	2018-19			2019-20			2020-21		
Grade	Number of Students								
	1-20	21-32	33+	1-20	21-32	33+	1-20	21-32	33+
K	3	4		2	3		2	3	
1	4	2		1	5		6		
2	1	5		2	4		3	3	
3	2	4			6		3	3	
4	1	5.5		2.5	4		2	3.5	
5		5.5		1.5	5			4.5	





## Suspensions and Expulsions

This table shows the school, district, and state suspension and expulsion rates collected between July through June, each full school year respectively.

Suspensions and Expulsions		Two-Year Data				
	South/West Park ES		Tracy USD		California	
	18-19	20-21	18-19	20-21	18-19	20-21
<b>Suspension rates</b>	10.4%	0.1%	9.3%	0.1%	3.5%	0.2%
<b>Expulsion rates</b>	0.0%	0.0%	0.5%	0.0%	0.1%	0.0%

Note: Data collected during the 2020–21 school year may not be comparable to earlier years of this collection due to differences in learning mode instruction in response to the COVID-19 pandemic.

This table shows the school, district, and state suspension and expulsion rates collected between July through February, partial school year due to the COVID-19 pandemic.

Suspensions and Expulsions		2019-20 School Year		
	South/West Park ES	Tracy USD	California	
	19-20	19-20	19-20	
<b>Suspension rates</b>	7.4%	5.5%	2.5%	
<b>Expulsion rates</b>	0.0%	0.4%	0.1%	

Note: The 2019–20 suspensions and expulsions rate data are not comparable to other year data because the 2019–20 school year is a partial school year due to the COVID-19 crisis. As such, it would be inappropriate to make any comparisons in rates of suspensions and expulsions in the 2019–20 school year compared to other school years.

## Suspensions and Expulsions by Student Group

Suspensions and Expulsions by Student Group		2020-21 School Year	
Student Group	Suspensions Rate	Expulsions Rate	
<b>All Students</b>	0.10%	0.00%	
<b>Female</b>	0.00%	0.00%	
<b>Male</b>	0.20%	0.00%	
<b>Non-Binary</b>	0.00%	0.00%	
<b>American Indian or Alaska Native</b>	0.00%	0.00%	
<b>Asian</b>	0.00%	0.00%	
<b>Black or African American</b>	0.00%	0.00%	
<b>Filipino</b>	0.00%	0.00%	
<b>Hispanic or Latino</b>	0.20%	0.00%	
<b>Native Hawaiian or Pacific Islander</b>	0.00%	0.00%	
<b>Two or More Races</b>	0.00%	0.00%	
<b>White</b>	0.00%	0.00%	
<b>English Learners</b>	0.20%	0.00%	
<b>Foster Youth</b>	0.00%	0.00%	
<b>Homeless</b>	0.00%	0.00%	
<b>Socioeconomically Disadvantaged</b>	0.20%	0.00%	
<b>Students Receiving Migrant Education Services</b>	0.00%	0.00%	
<b>Students with Disabilities</b>	1.40%	0.00%	

## Professional Development

Tracy Unified School District requires new teachers to participate in the Tracy Teacher Induction Program (TTIP). This involves six full days of pre-service and four days of follow-up during the year. At this time, teachers are introduced to the district and their site and receive training on classroom management, content organization, and lesson design. All activities are based on the California Standards for the Teaching Profession (CSTP). Throughout the year in TTIP, teachers are additionally supported in the classroom on a regular basis by a staff-development specialist. New teachers who qualify for the Beginning Teacher Support and Assessment (BTSA) program to clear their preliminary credentials will be assigned a BTSA support provider and will work through the modules of the Formative Assessment for California Teachers (FACT).

The district offers professional-development opportunities for all staff members throughout the school year. Two full days are provided before the school year starts.

Every Monday, students are released early from school at 1:30 p.m. to allow teachers to participate in professional-development opportunities. These sessions are divided throughout the year to allow teachers to participate in site staff development, district staff development and teacher collaboration time.

South/West Park has five Next Generation Science Standards (NGSS) instructional coaches who facilitate lesson study groups with our teachers.

### Professional Development Days

Number of school days dedicated to staff development and continuous improvement

<b>2019-20</b>	3
<b>2020-21</b>	5
<b>2021-22</b>	5



## Types of Services Funded

About 55% of the district's income is spent on employee salaries, and 22% is spent on employee benefits. Books and supplies account for 9% of the district's spending, an additional 9% is dedicated to services and operating costs, 1% is used for capital outlay, and 2% is spent on another district outgo. Expenditures are expected to exceed revenues by approximately 8%.

All our K-3 classes comply with the California Class Size Reduction program limits. We offer a Bilingual Education and a GATE program at South/West Park Elementary School. We provide special programs at our high schools that include Agricultural Career Technical Education, a Space and Engineering Academy, a Medical and Health Services Academy.

## California Physical Fitness Test

Each spring, all students in grades 5, 7 and 9 are required to participate in the California Physical Fitness Test (PFT). The Fitnessgram is the designated PFT for students in California public schools put forth by the State Board of Education. The PFT measures six key fitness areas:

1. Aerobic Capacity
2. Body Composition
3. Flexibility
4. Abdominal Strength and Endurance
5. Upper Body Strength and Endurance
6. Trunk Extensor Strength and Flexibility

Encouraging and assisting students in establishing lifelong habits of regular physical activity is the primary goal of the Fitnessgram. The table shows the percentage of students meeting the fitness standards of being in the "healthy fitness zone" for the most recent testing period. For more detailed information on the California PFT, please visit [www.cde.ca.gov/ta/tg/pf](http://www.cde.ca.gov/ta/tg/pf).

### California Physical Fitness Test

2020-21 School Year

Percentage of Students Meeting Fitness Standards	South/West Park ES
	Grade 5
<b>Four of six standards</b>	◆
<b>Five of six standards</b>	◆
<b>Six of six standards</b>	◆

## Chronic Absenteeism by Student Group

### Chronic Absenteeism by Student Group

2020-21 School Year

Student Group	Cumulative Enrollment	Chronic Absenteeism Eligible Enrollment	Chronic Absenteeism Count	Chronic Absenteeism Rate
<b>All Students</b>	862	834	50	6.00%
<b>Female</b>	443	427	21	4.90%
<b>Male</b>	419	407	29	7.10%
<b>American Indian or Alaska Native</b>	2	2	0	0.00%
<b>Asian</b>	67	67	0	0.00%
<b>Black or African American</b>	39	37	9	24.30%
<b>Filipino</b>	23	23	0	0.00%
<b>Hispanic or Latino</b>	666	645	33	5.10%
<b>Native Hawaiian or Pacific Islander</b>	6	5	0	0.00%
<b>Two or More Races</b>	14	14	5	35.70%
<b>White</b>	45	41	3	7.30%
<b>English Learners</b>	542	534	20	3.70%
<b>Foster Youth</b>	3	1	0	0.00%
<b>Homeless</b>	82	80	4	5.00%
<b>Socioeconomically Disadvantaged</b>	668	647	46	7.10%
<b>Students Receiving Migrant Education Services</b>	4	4	0	0.00%
<b>Students with Disabilities</b>	70	65	2	3.10%

◆ The 2020-21 data are not available. Due to the COVID-19 crisis, the Physical Fitness Test was suspended.

## California School Dashboard

The California School Dashboard (Dashboard) <https://www.caschooldashboard.org/> reflects California's new accountability and continuous improvement system and provides information about how LEAs and schools are meeting the needs of California's diverse student population. The Dashboard contains reports that display the performance of LEAs, schools, and student groups on a set of state and local measures to assist in identifying strengths, challenges, and areas in need of improvement.



## SARC Reporting in the 2020–21 School Year Only

Where the most viable option, LEAs were required to administer the statewide summative assessment in ELA and mathematics. Where a statewide summative assessment was not the most viable option for the LEA (or for one or more grade-level[s] within the LEA) due to the pandemic, LEAs were allowed to report results from a different assessment that met the criteria established by the State Board of Education (SBE) on March 16, 2021. The assessments were required to be:

- Aligned with CA CCSS for ELA and mathematics;
- Available to students in grades 3 through 8, and grade 11; and
- Uniformly administered across a grade, grade span, school, or district to all eligible students.

## Options

The CAAs could only be administered in-person following health and safety requirements. If it was not viable for the LEA to administer the CAAs in person with health and safety guidelines in place, the LEA was directed to not administer the tests. There were no other assessment options available for the CAAs. Schools administered the Smarter Balanced Summative Assessments for ELA and mathematics, other assessments that meet the SBE criteria, or a combination of both, and they could only choose one of the following:

- Smarter Balanced ELA and mathematics summative assessments;
- Other assessments meeting the SBE criteria; or
- Combination of Smarter Balanced ELA and mathematics summative assessments and other assessments.

## CAASPP Test Results in Science for All Students (grades 5, 8 and high school)

The table below shows the percent of students meeting or exceeding the State standard on the CAASPP – California Science Test (CAST) and the California Alternate Assessment for Science (CAA for Science) for grades 5, 8, and once in high school (i.e., grade 10, 11 or 12).

Percentage of Students Meeting or Exceeding State Standard					Two-Year Data	
	South/West Park ES		Tracy USD		California	
Subject	19-20	20-21	19-20	20-21	19-20	20-21
Science	■	24.17%	■	22.22%	■	28.72%

## CAASPP Test Results in ELA and Mathematics for All Students taking and completing a state-administered assessment

The table below shows the percent of students meeting or exceeding the State standards on the California Assessment of Student Performance and Progress (CAASPP) Smarter Balanced Summative Assessments and California Alternate Assessments (CAAs) for English language arts/literacy (ELA) and mathematics for grades 3-8 and 11.

Percentage of Students Meeting or Exceeding State Standard					Two-Year Data	
	South/West Park ES		Tracy USD		California	
Subject	19-20	20-21	19-20	20-21	19-20	20-21
English language arts/literacy	■	*	■	*	■	*
Mathematics	■	*	■	*	■	*

■ Data for 2019–20 are not available due to the COVID-19 pandemic and resulting summative test suspension. The Executive Order N-30-20 was issued which waived the assessment, accountability, and reporting requirements for the 2019–20 school year.

\* Data for 2020–21 are not comparable to other year data due to the COVID-19 pandemic during the 2020–21 school year. Where the CAASPP assessments in ELA and/or mathematics is not the most viable option, the LEAs were allowed to administer local assessments. Therefore, the 2020–21 data between school years for the school, district, state are not an accurate comparison. As such, it is inappropriate to compare results of the 2020–21 school year to other school years.

## Statewide Assessments

**Statewide assessments** (i.e., California Assessment of Student Performance and Progress [CAASPP] System includes the Smarter Balanced Summative Assessments for students in the general education population and the California Alternate Assessments [CAAs] for English language arts/literacy [ELA] and mathematics given in grades three through eight and grade eleven. Only eligible students may participate in the administration of the CAAs. CAAs items are aligned with alternate achievement standards, which are linked with the Common Core State Standards [CCSS] for students with the most significant cognitive disabilities).

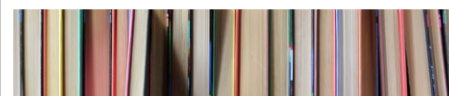
The CAASPP System encompasses the following assessments and student participation requirements:

1. **Smarter Balanced Summative Assessments and CAAs for ELA** in grades three through eight and grade eleven.
2. **Smarter Balanced Summative Assessments and CAAs for mathematics** in grades three through eight and grade eleven.
3. **California Science Test (CAST) and CAAs for Science** in grades five, eight, and once in high school (i.e., grade ten, eleven, or twelve).



## Note

Due to the COVID-19 pandemic, California Governor Gavin Newsom issued Executive Order N-30-20 which waived the requirement for statewide testing for the 2019–20 school year. Also due to the COVID-19 pandemic, the U.S. Department of Education approved a waiver of the requirement for statewide testing for the 2019–20 school year, as specified on the CDE Every Student Succeeds Act web page at <https://www.cde.ca.gov/re/es/>.



## CAASPP Test Results by Student Group: Science (grade 5)

### Percentage of Students Meeting or Exceeding State Standards

2020-21 School Year

Science					
Group	Total Enrollment	Number Tested	Percentage Tested	Percentage Not Tested	Percentage Met or Exceeded
All students	122	120	98.36%	1.64%	24.17%
Female	63	63	100.00%	0.00%	20.63%
Male	59	57	96.61%	3.39%	28.07%
American Indian or Alaska Native	❖	❖	❖	❖	❖
Asian	15	15	100.00%	0.00%	73.33%
Black or African American	❖	❖	❖	❖	❖
Filipino	❖	❖	❖	❖	❖
Hispanic or Latino	86	84	97.67%	2.33%	9.52%
Native Hawaiian or Pacific Islander	❖	❖	❖	❖	❖
Two or more races	❖	❖	❖	❖	❖
White	❖	❖	❖	❖	❖
English Learners	59	59	100.00%	0.00%	0.00%
Foster Youth	❖	❖	❖	❖	❖
Homeless	14	14	100.00%	0.00%	14.29%
Military	❖	❖	❖	❖	❖
Socioeconomically disadvantaged	86	84	97.67%	2.33%	13.10%
Students receiving Migrant Education services	❖	❖	❖	❖	❖
Students with Disabilities	❖	❖	❖	❖	❖

❖ Inclusion and exclusion rules are different for the SARC than for other public assessment reports. Scores are not shown when the number of students tested is ten or less, either because the number of students in this category is too small for statistical accuracy or to protect student privacy.





CAASPP Test Results by Student Group: English Language Arts (grades 3-5)  
For students taking and completing a state-administered assessment.

Percentage of Students Meeting or Exceeding State Standards

2020-21 School Year

English Language Arts

Group	Total Enrollment	Number Tested	Percentage Tested	Percentage Not Tested	Percentage Met or Exceeded
<b>All students</b>	408	396	97.06%	2.94%	26.84%
<b>Female</b>	220	215	97.73%	2.27%	29.30%
<b>Male</b>	188	181	96.28%	3.72%	23.89%
<b>American Indian or Alaska Native</b>	❖	❖	❖	❖	❖
<b>Asian</b>	38	38	100.00%	0.00%	71.05%
<b>Black or African American</b>	21	21	100.00%	0.00%	38.10%
<b>Filipino</b>	17	17	100.00%	0.00%	76.47%
<b>Hispanic or Latino</b>	298	287	96.31%	3.69%	15.73%
<b>Native Hawaiian or Pacific Islander</b>	❖	❖	❖	❖	❖
<b>Two or more races</b>	❖	❖	❖	❖	❖
<b>White</b>	23	22	95.65%	4.35%	45.45%
<b>English Learners</b>	229	222	96.94%	3.06%	5.43%
<b>Foster Youth</b>	❖	❖	❖	❖	❖
<b>Homeless</b>	60	54	90.00%	10.00%	11.11%
<b>Military</b>	❖	❖	❖	❖	❖
<b>Socioeconomically disadvantaged</b>	296	287	96.96%	3.04%	17.83%
<b>Students receiving Migrant Education services</b>	❖	❖	❖	❖	❖
<b>Students with Disabilities</b>	22	21	95.45%	4.55%	9.52%

❖ Inclusion and exclusion rules are different for the SARC than for other public assessment reports. Scores are not shown when the number of students tested is ten or less, either because the number of students in this category is too small for statistical accuracy or to protect student privacy.



## CAASPP Test Results by Student Group: Mathematics (grades 3-5) For students taking and completing a state-administered assessment.

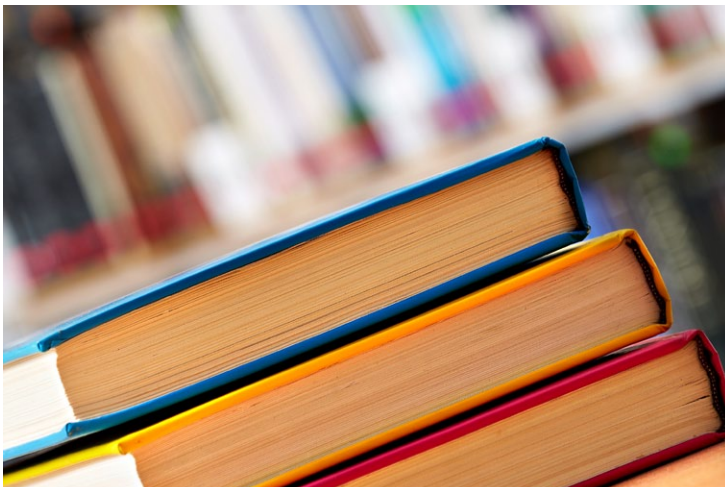
### Percentage of Students Meeting or Exceeding State Standards

2020-21 School Year

#### Mathematics

Group	Total Enrollment	Number Tested	Percentage Tested	Percentage Not Tested	Percentage Met or Exceeded
<b>All students</b>	408	395	96.81%	3.19%	22.78%
<b>Female</b>	220	215	97.73%	2.27%	21.86%
<b>Male</b>	188	180	95.74%	4.26%	23.89%
<b>American Indian or Alaska Native</b>	❖	❖	❖	❖	❖
<b>Asian</b>	38	38	100.00%	0.00%	65.79%
<b>Black or African American</b>	21	21	100.00%	0.00%	42.86%
<b>Filipino</b>	17	17	100.00%	0.00%	82.35%
<b>Hispanic or Latino</b>	298	286	95.97%	4.03%	9.79%
<b>Native Hawaiian or Pacific Islander</b>	❖	❖	❖	❖	❖
<b>Two or more races</b>	❖	❖	❖	❖	❖
<b>White</b>	23	22	95.65%	4.35%	36.36%
<b>English Learners</b>	229	221	96.51%	3.49%	3.62%
<b>Foster Youth</b>	❖	❖	❖	❖	❖
<b>Homeless</b>	60	56	93.33%	6.67%	14.29%
<b>Military</b>	❖	❖	❖	❖	❖
<b>Socioeconomically disadvantaged</b>	296	285	96.28%	3.72%	12.28%
<b>Students receiving Migrant Education services</b>	❖	❖	❖	❖	❖
<b>Students with Disabilities</b>	22	21	95.45%	4.55%	4.76%

❖ Inclusion and exclusion rules are different for the SARC than for other public assessment reports. Scores are not shown when the number of students tested is ten or less, either because the number of students in this category is too small for statistical accuracy or to protect student privacy.



## School Facility Good Repair Status

The table shows the results of the school's most recent inspection using the Facility Inspection Tool (FIT) or equivalent school form. This inspection determines the school facility's good repair status using ratings of good condition, fair condition or poor condition. The overall summary of facility conditions uses ratings of exemplary, good, fair or poor.

School Facility Good Repair Status		2021-22 School Year
Items Inspected	Repair Status	
<b>Systems:</b> Gas leaks, sewer, mechanical systems (heating, ventilation and HVAC)	Good	
<b>Interior:</b> Interior surfaces (floors, ceilings, walls and window casings)	Good	
<b>Cleanliness:</b> Pest/vermin control, overall cleanliness	Good	
<b>Electrical:</b> Electrical systems	Good	
<b>Restrooms/fountains:</b> Restrooms, sinks and drinking fountains	Good	
<b>Safety:</b> Fire safety, emergency systems, hazardous materials	Good	
<b>Structural:</b> Structural condition, roofs	Good	
<b>External:</b> Windows/doors/gates/fences, playgrounds/school grounds	Good	
<b>Overall summary of facility conditions</b>	Exemplary	
<b>Date of the most recent school site inspection</b>	7/30/2021	

## Deficiencies and Repairs

The table lists the repairs required for all deficiencies found during the site inspection. Regardless of each item's repair status, all deficiencies are listed.

Deficiencies and Repairs		2021-22 School Year
Items Inspected	Deficiencies and Action Taken or Planned	Date of Action
<b>Interior</b>	In room A210 floor is rising by cubbies. Work order submitted.	October 2021
<b>Restrooms/fountains</b>	Room E103 fountain is off. Room J101 no water. Boys' & girls' restroom by J Building is missing tile. Boys' restroom middle sink doesn't have end sticks. Work order submitted.	October 2021

## School Facilities

### General

The Tracy Unified School District takes great effort to ensure that all schools are clean, safe and functional. To assist in this effort, the district uses a facility-survey instrument developed by the State of California Office of Public-School Construction. The results of this survey are available at the district office located at 1875 West Lowell Avenue in Tracy, California.

Below is more specific information on the condition of South/West Park Elementary School for the 2021-22 school year and the efforts made to ensure that students are provided with a clean, safe and functional learning environment.

### Age of School/Buildings

Half of the campus (old south campus) was replaced with a two-story building. The remaining campus, serving students in Pre-K-2, has 27 classrooms, a multipurpose room, library, administration building, kitchen and storage building. The campus was built in stages between 1997-98 (10 relocatable classrooms), 2000-01 (12 classrooms, the library, administration offices and kitchen), 2002-03 (relocatable restroom facilities and storage facilities) and in 2016 a new classroom building was built, which included admin offices, classrooms, a library and a computer lab. Additional amenities were also added, such as classrooms with learning walls, new projectors/technology, and both intrusion and fire alarm systems have been updated.

*Continued on sidebar*

## School Facilities

*Continued from left*

### Maintenance and Repair

District maintenance staff ensures that the repairs necessary to keep the school in good repair and working order are completed in a timely manner. A work-order process is used to ensure efficient service and that emergency repairs are given the highest priority.

### Cleaning Process and Schedule

The district governing board has adopted cleaning standards for all schools in the district. A summary of these standards is available at the district office. The principal works daily with the custodial staff to develop cleaning schedules to ensure a clean and safe school.

### Deferred Maintenance Budget

In accordance with Chapter 12, Statutes of 2009 (SBX3 4), the district has elected to use the flexibility clause. The clause allows the district to use the state deferred maintenance contribution as well as the district's matching share contribution toward "any educational purpose." The district has elected to commit deferred maintenance funding to cover general fund expenditures.





## Quality of Textbooks

The following table outlines the criteria required for choosing textbooks and instructional materials.

Quality of Textbooks	
2021-22 School Year	
Criteria	Yes/No
<b>Are the textbooks adopted from the most recent state-approved or local governing-board-approved list?</b>	No ✖
✖ Science instructional materials, K-12, are currently going through an instructional materials adoption using the CA NGSS Toolkit for IM Evaluation; to be completed in February 2022 and to be in students' hands in the 2022-23 school year.	

## Textbooks and Instructional Materials

Textbook-selection committee members are volunteers from each school site, balanced by grade band (K-2, 3-5, 6-8 and 9-12). They receive ongoing training in standards related to that content area before an adoption cycle begins. After extensive review and piloting, the textbook-selection committee members vote to recommend one text to the district's Curriculum Council. The council, which consists of members from each school site and includes some site administrators, reviews the recommendation and then recommends instructional materials (IM) to the school board.

Our most recent public hearing to adopt a resolution on the sufficiency of instructional materials was in September 2021. The district chose its most recently adopted textbooks (K-5 history/social sciences) using the state-approved list. The textbook content fits within the curriculum framework adopted by the California State Board of Education (SBE). Tracy Unified School District (TUSD) is in the process of evaluating and selecting instructional materials for science in grades K-12.

### Textbooks and Instructional Materials List

2021-22 School Year

Subject	Textbook	Adopted
<b>Reading/language arts</b>	<i>Wonders (TK-5 tradition)</i>	2017
<b>Mathematics</b>	My Math, McGraw-Hill (K-5 traditional)	2014
<b>Science</b>	<i>Science, CA Edition (K-5)</i>	2007
<b>History/social science</b>	<i>My World Interactive (K-5)</i>	2019

## Availability of Textbooks and Instructional Materials

The following lists the percentage of pupils who lack their own assigned textbooks and instructional materials.

### Percentage of Students Lacking Materials by Subject

2021-22 School Year

South/West Park ES	Percentage Lacking
<b>Reading/language arts</b>	0%
<b>Mathematics</b>	0%
<b>Science</b>	0%
<b>History/social science</b>	0%
<b>Visual and performing arts</b>	✖
<b>Foreign language</b>	✖
<b>Health</b>	✖

## Public Internet Access

Internet access is available at public libraries and other locations that are publicly accessible (e.g., the California State Library). Access to the internet at libraries and public locations is generally provided on a first-come, first-served basis. Other use restrictions include the hours of operation, the length of time that a workstation may be used (depending on availability), the types of software programs available at a workstation, and the ability to print documents.

## Currency of Textbooks

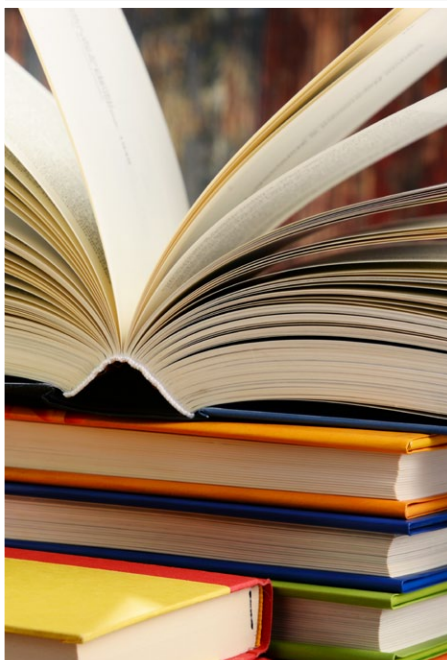
This table displays the date when the most recent hearing was held to adopt a resolution on the sufficiency of instructional materials.

### Currency of Textbooks

2021-22 School Year

<b>Data collection date</b>	9/28/2021
-----------------------------	-----------

✖ Not applicable.





## Teacher Preparation and Placement

The teacher data displayed in this SARC is from the 2020-21 school year. This table displays the number and percent of teacher authorization/assignment as well as the total number and percent of teaching positions at the school, district, and state levels. For questions concerning the assignment of teachers outside their subject area of competence or the credential status of teachers, visit the California Commission on Teacher Credentialing website at <https://www.ctc.ca.gov/>.

Teacher Preparation and Placement				2020-21 School Year		
Authorization/Assignment	School Number	School Percent	District Number	District Percent	State Number	State Percent
<b>Fully (Preliminary or Clear) Credentialed for Subject and Student Placement (properly assigned)</b>	34.1	100.0%	549.4	79.2%	228,366.1	83.1%
<b>Intern Credential Holders Properly Assigned</b>	0.0	0.0%	31.0	4.5%	4,205.9	1.5%
<b>Teachers Without Credentials and Misassignments ("ineffective" under ESSA)</b>	0.0	0.0%	27.0	3.9%	11,216.7	4.1%
<b>Credentialed Teachers Assigned Out-of-Field ("out-of-field" under ESSA)</b>	0.0	0.0%	29.4	4.2%	12,115.8	4.4%
<b>Unknown</b>	0.0	0.0%	57.1	8.2%	18,854.3	6.9%
<b>Total Teaching Positions</b>	34.1	100.0%	694.2	100.0%	274,759.1	100.0%

## Teachers Without Credentials and Misassignments (considered "ineffective" under ESSA)

For questions concerning the permits, waivers, and misassignment of teachers, visit the California Commission on Teacher Credentialing website at <https://www.ctc.ca.gov/>.

**Permits/waivers:** Teachers that are issued limited emergency permits by the California Commission on Teacher Credentialing that authorize them to temporarily teach courses and student groups they are assigned to without possessing the appropriate credential.

**Teacher Misassignments:** The assignment of employees to teaching or pupil services positions for which the employee does not hold the required certificate, credential, or other statutory authorization.

**Vacant Teacher Positions:** The total number of the school's vacant teacher positions.

Teachers Without Credentials and Misassignments		2020-21 School Year
Authorization/Assignment	South/West Park ES	
<b>Permits and Waivers</b>	0.0	
<b>Misassignments</b>	0.0	
<b>Vacant Positions</b>	0.0	
<b>Total Teachers Without Credentials and Misassignments</b>	0.0	

Note: The data in these tables is based on Full Time Equivalent (FTE) status. One FTE equals one staff member working full time; one FTE could also represent two staff members who each work 50 percent of full time. Additionally, an assignment is defined as a position that an educator is assigned to based on setting, subject, and grade level. An authorization is defined as the services that an educator is authorized to provide to students.

The data source is the California State Assignment Accountability System (CalSAAS) provided by the Commission on Teacher Credentialing. For information on the CalSAAS, visit the CALPADS web page at <https://www.cde.ca.gov/ds/sp/cl/calpadsup-dflash201.asp>.

For more information on the definitions listed above, refer to the Updated Teacher Equity Definitions web page at <https://www.cde.ca.gov/pd/ee/teacherequitydefinitions.asp>.

## Teacher Preparation and Placement

**Fully (Preliminary or Clear) Credentialed for Subject and Student Placement (properly assigned):** The teacher possesses a California preliminary or clear credential issued by the California Commission on Teacher Credentialing which permits them to teach the subject and grade levels that they are assigned.

**Intern Credential Holders Properly Assigned:** The teacher possess a California intern credential issued by the California Commission on Teacher Credentialing which permits them to teach the subject and grade levels that they are assigned.

**Teachers Without Credentials and Misassignments ("ineffective" under Every Student Succeeds Act [ESSA]):** An ineffective teacher is any of the following:

- An individual whose assignment is legally authorized by an emergency permit that does not require possession of a full teaching license; or
- A teacher who holds a teaching credential but does not possess a permit or authorization that temporarily allows them to teach outside of their credentialed area (misassigned); or
- An individual who holds no credential, permit, or authorization to teach in California.
- "Ineffective" includes the following limited term emergency permits:
  - Provisional Internship Permits;
  - Short-Term Staff Permits;
  - Variable Term Waivers; and
  - Substitute permits or Teaching Permits for Statutory Leave (TSPL) holders serving as the teacher of record.

**Credentialed Teachers Assigned Out-of-Field ("out-of-field" under ESSA):** A credentialed teacher who has not yet demonstrated subject matter competence in the subject area(s) or for the student population to which he or she is assigned. Under this definition, the following limited permits will be considered out of field:

- General Education Limited Assignment Permit (GELAP)
- Special Education Limited Assignment Permit (SELAP)
- Short-Term Waivers
- Emergency English Learner or Bilingual Authorization Permits
- Local Assignment Options

**Unknown:** These are instances where either information about the course assignment or the teacher is either missing or has been identified as incorrect. Therefore, an accurate assignment status cannot be currently made.



## Credentialed Teachers Assigned Out-of-Field (considered "out-of-field" under ESSA)

**Credentialed Teachers Authorized on a Permit or Waiver:** Teachers that are issued limited emergency permits by the California Commission on Teacher Credentialing that authorize them to temporarily teach courses and student groups they are assigned to without possessing the appropriate credential.

**Local Assignment Options:** Means if an employing agency is unable to assign a teacher or other certificated employee with an appropriate credential, it can assign any fully-credentialed teacher outside of their area of credential authorization if the local educational agency abides by requirements in California Education Code and those required by the California Commission on Teacher Credentialing.

For more information on the definitions listed above, refer to the California Commission on Teacher Credentialing's Administrator's Assignment Manual at <https://www.ctc.ca.gov/credentials/manuals>.

### Credentialed Teachers Assigned Out-of-Field

2020-21 School Year

Indicator	South/West Park ES
<b>Credentialed Teachers Authorized on a Permit or Waiver</b>	0.0
<b>Local Assignment Options</b>	0.0
<b>Total Out-of-Field Teachers</b>	0.0

## Academic Counselors and School Support Staff

This table displays information about academic counselors and support staff at the school and their full-time equivalent (FTE).

### Ratio of Pupils to Academic Counselors and School Support Staff Data

2019-20 School Year

	Ratio
<b>Pupils to Academic counselors</b>	✧
<b>Support Staff</b>	<b>FTE</b>
<b>Counselor (academic, social/behavioral or career development)</b>	0.00
<b>Library media teacher (librarian)</b>	1.00
<b>Library media services staff (paraprofessional)</b>	0.00
<b>Psychologist</b>	0.50
<b>Social worker</b>	0.00
<b>Nurse</b>	0.06
<b>Speech/language/hearing specialist</b>	1.00
<b>Resource specialist (nonteaching)</b>	0.00
✧ Not applicable.	

## Class Assignments

**Misassignments for English Learners:** The assignment of employees to teaching or pupil services positions with English Learners for which the employee does not hold the required certificate, credential, or other statutory authorization.

**No credential, permit or authorization to teach:** The teacher does not possess any type of authorization, permit, waiver, or certificate issued by the California Commission on Teacher Credentialing to teach in California schools.

Misassignment and vacant teacher position data should be available in the district's personnel office.

### Class Assignments

2020-21 School Year

Indicator	South/West Park ES
<b>Misassignments for English Learners (a percentage of all the classes with English learners taught by teachers that are misassigned)</b>	0.0%
<b>No credential, permit or authorization to teach (a percentage of all the classes taught by teachers with no record of an authorization to teach)</b>	0.0%

The data source is the California State Assignment Accountability System (CalSAAS) provided by the Commission on Teacher Credentialing. For information on the CalSAAS, visit the CALPADS web page at <https://www.cde.ca.gov/ds/sp/cl/calpadsup-dflash201.asp>.

For more information on the definitions listed above, refer to the Updated Teacher Equity Definitions web page at <https://www.cde.ca.gov/pd/ee/teacherequitydefinitions.asp>.



## Financial Data

The financial data displayed in this SARC is from the 2019-20 fiscal year. The most current fiscal information available provided by the state is always two years behind the current school year and one year behind most other data included in this report. For detailed information on school expenditures for all districts in California, see the California Department of Education (CDE) Current Expense of Education & Per-pupil Spending web page at [www.cde.ca.gov/ds/fd/ec](http://www.cde.ca.gov/ds/fd/ec). For information on teacher salaries for all districts in California, see the CDE Certificated Salaries & Benefits web page at [www.cde.ca.gov/ds/fd/cs](http://www.cde.ca.gov/ds/fd/cs). To look up expenditures and salaries for a specific school district, see the Ed-Data website at [www.ed-data.org](http://www.ed-data.org).

## District Financial Data

This table displays district teacher and administrative salary information and compares the figures to the state averages for districts of the same type and size based on the salary schedule. Note: The district salary data does not include benefits.

Salary Data			2019-20 Fiscal Year
	Tracy USD	Similar Sized District	
<b>Beginning teacher salary</b>	\$52,219	\$52,562	
<b>Midrange teacher salary</b>	\$76,968	\$83,575	
<b>Highest teacher salary</b>	\$101,195	\$104,166	
<b>Average elementary school principal salary</b>	\$135,269	\$131,875	
<b>Average middle school principal salary</b>	\$143,044	\$137,852	
<b>Average high school principal salary</b>	\$155,819	\$150,626	
<b>Superintendent salary</b>	\$240,699	\$260,243	
<b>Teacher salaries: percentage of budget</b>	36%	34%	
<b>Administrative salaries: percentage of budget</b>	5%	5%	

## Financial Data Comparison

This table displays the school's per-pupil expenditures from unrestricted sources and the school's average teacher salary and compares it to the district and state data.

Financial Data Comparison			2019-20 Fiscal Year
	Expenditures Per Pupil From Unrestricted Sources	Annual Average Teacher Salary	
<b>South/West Park ES</b>	\$6,671	\$80,218	
<b>Tracy USD</b>	\$6,777	\$72,386	
<b>California</b>	\$8,444	\$86,376	
<b>School and district: percentage difference</b>	-1.6%	+10.8%	
<b>School and California: percentage difference</b>	-21.0%	-7.1%	

## School Financial Data

The following table displays the school's average teacher salary and a breakdown of the school's expenditures per pupil from unrestricted and restricted sources.

School Financial Data	
2019-20 Fiscal Year	
<b>Total expenditures per pupil</b>	\$7,069
<b>Expenditures per pupil from restricted sources</b>	\$398
<b>Expenditures per pupil from unrestricted sources</b>	\$6,671
<b>Annual average teacher salary</b>	\$80,218



## Expenditures Per Pupil

Supplemental/restricted expenditures come from money whose use is controlled by law or by a donor. Money that is designated for specific purposes by the district or governing board is not considered restricted. Basic/unrestricted expenditures are from money whose use, except for general guidelines, is not controlled by law or by a donor.

# South/West Park Elementary School

Data for this year's SARC was provided by the California Department of Education and school and district offices. For additional information on California schools and districts and comparisons of the school to the district, the county and the state, please visit DataQuest at <http://dq.cde.ca.gov/dataquest>. DataQuest is an online resource that provides reports for accountability, test data, enrollment, graduates, dropouts, course enrollments, staffing and data regarding English learners. Per Education Code Section 35256, each school district shall make hard copies of its annually updated report card available, upon request, on or before February 1.

All data accurate as of January 2022.

## School Accountability Report Card

PUBLISHED BY:



School  
Innovations  
& Achievement

[www.sia-us.com](http://www.sia-us.com) | 800.487.9234



## ADDENDUM

LEA-Level CAASPP Test Results by Student Group: English Language Arts (grades 3-8 and 11)  
For students taking and completing a state-administered assessment.

### Percentage of Students Meeting or Exceeding State Standards

2020-21 School Year

#### English Language Arts

Group	Total Enrollment	Number Tested	Percentage Tested	Percentage Not Tested	Percentage Met or Exceeded
<b>LEAwide</b>	7,101	6,579	92.65%	7.35%	36.87%
<b>Female</b>	3,484	3,230	92.71%	7.29%	42.71%
<b>Male</b>	3,612	3,345	92.61%	7.39%	31.28%
<b>American Indian or Alaska Native</b>	28	26	92.86%	7.14%	34.62%
<b>Asian</b>	920	881	95.76%	4.24%	49.26%
<b>Black or African American</b>	388	337	86.86%	13.14%	30.45%
<b>Filipino</b>	357	351	98.32%	1.68%	59.14%
<b>Hispanic or Latino</b>	3,882	3,592	92.53%	7.47%	28.22%
<b>Native Hawaiian or Pacific Islander</b>	93	82	88.17%	11.83%	32.93%
<b>Two or more races</b>	291	263	90.38%	9.62%	45.80%
<b>White</b>	1,142	1,047	91.68%	8.32%	48.80%
<b>English Learners</b>	1,924	1,794	93.24%	6.76%	8.50%
<b>Foster Youth</b>	42	36	85.71%	14.29%	22.22%
<b>Homeless</b>	792	708	89.39%	10.61%	18.98%
<b>Military</b>	342	309	90.35%	9.65%	32.35%
<b>Socioeconomically disadvantaged</b>	4,221	3,870	91.68%	8.32%	27.44%
<b>Students receiving Migrant Education services</b>	--	--	--	--	--
<b>Students with Disabilities</b>	1,004	866	86.25%	13.75%	8.45%

Note: N/T values indicate that the schools in this LEA did not test students using the CAASPP for ELA.

Note: Double dashes (--) appear in the table when the number of students is ten or less, either because the number of students in this category is too small for statistical accuracy or to protect student privacy.



*"The future belongs  
to the educated."*



## ADDENDUM

LEA-Level CAASPP Test Results by Student Group: Mathematics (grades 3-8 and 11)  
For students taking and completing a state-administered assessment.

Percentage of Students Meeting or Exceeding State Standards					2020-21 School Year
Mathematics					
Group	Total Enrollment	Number Tested	Percentage Tested	Percentage Not Tested	Percentage Met or Exceeded
<b>LEAwide</b>	7,100	6,516	91.77%	8.23%	21.76%
<b>Female</b>	3,483	3,201	91.90%	8.10%	21.20%
<b>Male</b>	3,612	3,311	91.67%	8.33%	22.32%
<b>American Indian or Alaska Native</b>	28	26	92.86%	7.14%	7.69%
<b>Asian</b>	920	878	95.43%	4.57%	38.54%
<b>Black or African American</b>	388	334	86.08%	13.92%	16.77%
<b>Filipino</b>	357	350	98.04%	1.96%	41.67%
<b>Hispanic or Latino</b>	3,881	3,556	91.63%	8.37%	13.89%
<b>Native Hawaiian or Pacific Islander</b>	93	81	87.10%	12.90%	16.25%
<b>Two or more races</b>	291	263	90.38%	9.62%	27.38%
<b>White</b>	1,142	1,028	90.02%	9.98%	28.75%
<b>English Learners</b>	1,924	1,777	92.36%	7.64%	4.69%
<b>Foster Youth</b>	41	36	87.80%	12.20%	13.89%
<b>Homeless</b>	792	704	88.89%	11.11%	11.97%
<b>Military</b>	342	306	89.47%	10.53%	13.11%
<b>Socioeconomically disadvantaged</b>	4,220	3,830	90.76%	9.24%	15.05%
<b>Students receiving Migrant Education services</b>	--	--	--	--	--
<b>Students with Disabilities</b>	1,004	855	85.16%	14.84%	6.67%

Note: N/T values indicate that the schools in this LEA did not test students using the CAASPP for Mathematics.

Note: Double dashes (--) appear in the table when the number of students is ten or less, either because the number of students in this category is too small for statistical accuracy or to protect student privacy.

