



# BOWDITCH MIDDLE SCHOOL

## CAMPUS IMPROVEMENTS

05.26.2022





EACH COLOR  
REPRESENTS A SINGLE  
STRUCTURAL ENTITY





PROJECT BUDGET  
DEEMED TO ONLY ALLOW  
FOR APPROPRIATE 1/2  
CAMPUS REPLACEMENT.





BUBBLE DIAGRAMS ARE CIRCULAR TO REPRESENT LOCATION AND ARE NOT TO BE CONSIDERED AS FINAL BUILDING GEOMETRY

- MEASURE X BUILD
- MEASURE X RENOVATE
- MEASURE T BUILD
- MEASURE T RENOVATE
- COURTYARD SITE WORK













- LEGEND**
- BUILDINGS TO BE REMAIN
  - DRAMA BLDG + SCIENCE BLDG
  - PROPOSED GYM / LOCKERS
  - EXISTING LUNCH SHELTER
  - CLASSROOM AT (E) BLDG TO REMAIN
  - POTENTIAL NEW CLASSROOM BUILDING
  - POTENTIAL COUNSELING OFFICES AND STAFF ROC
  - POTENTIAL NEW LIBRARY BUILDING

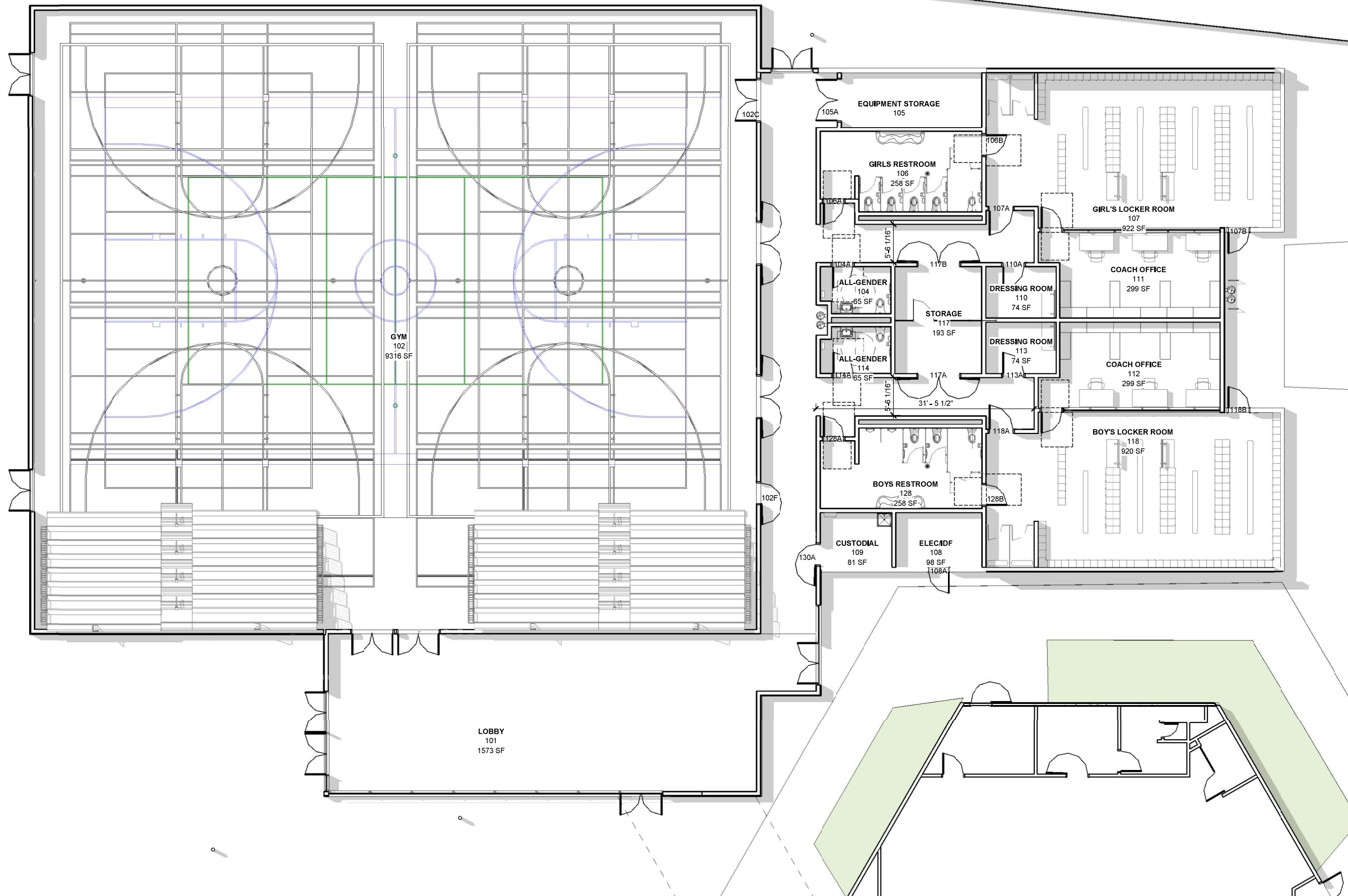




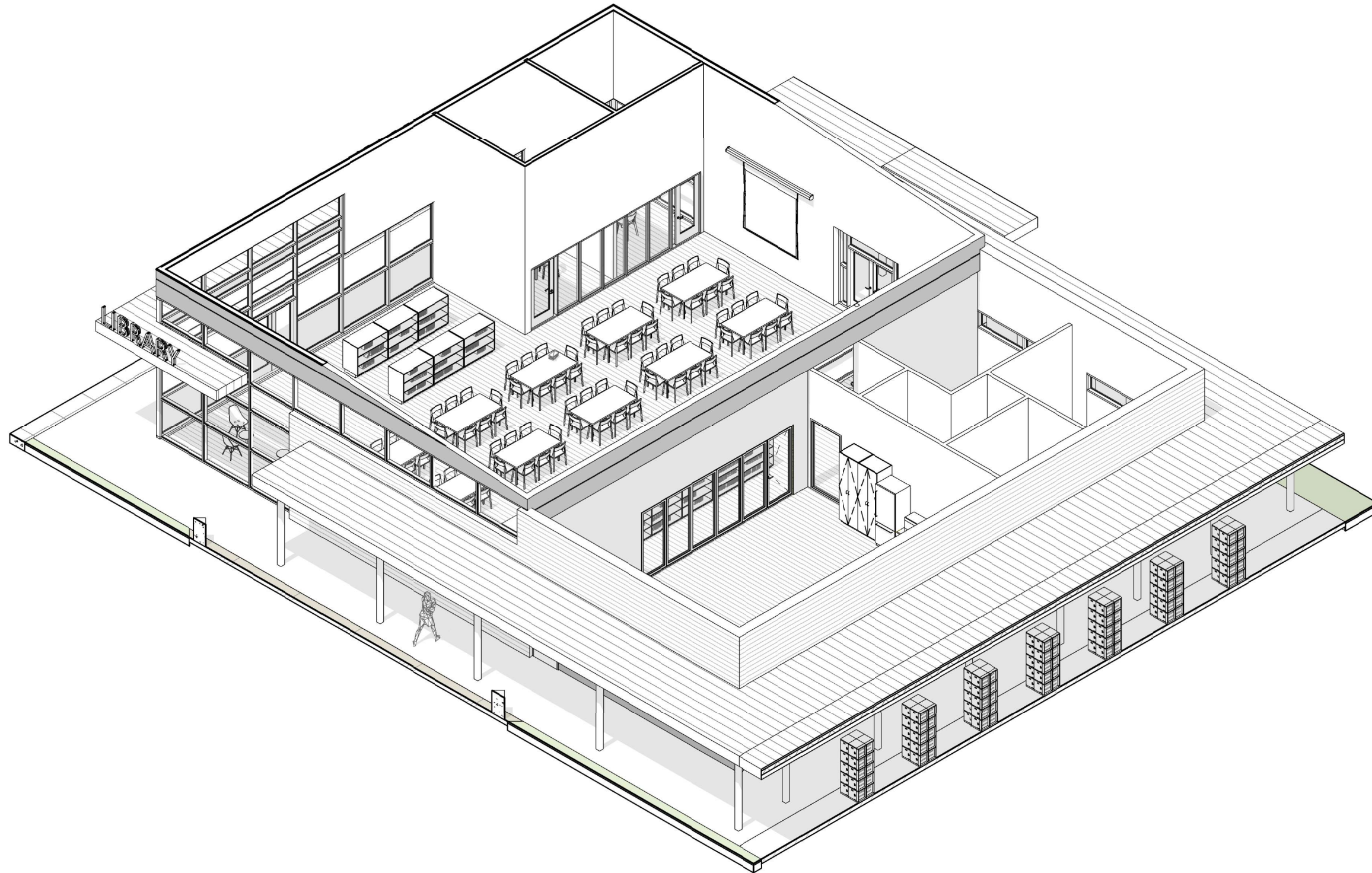




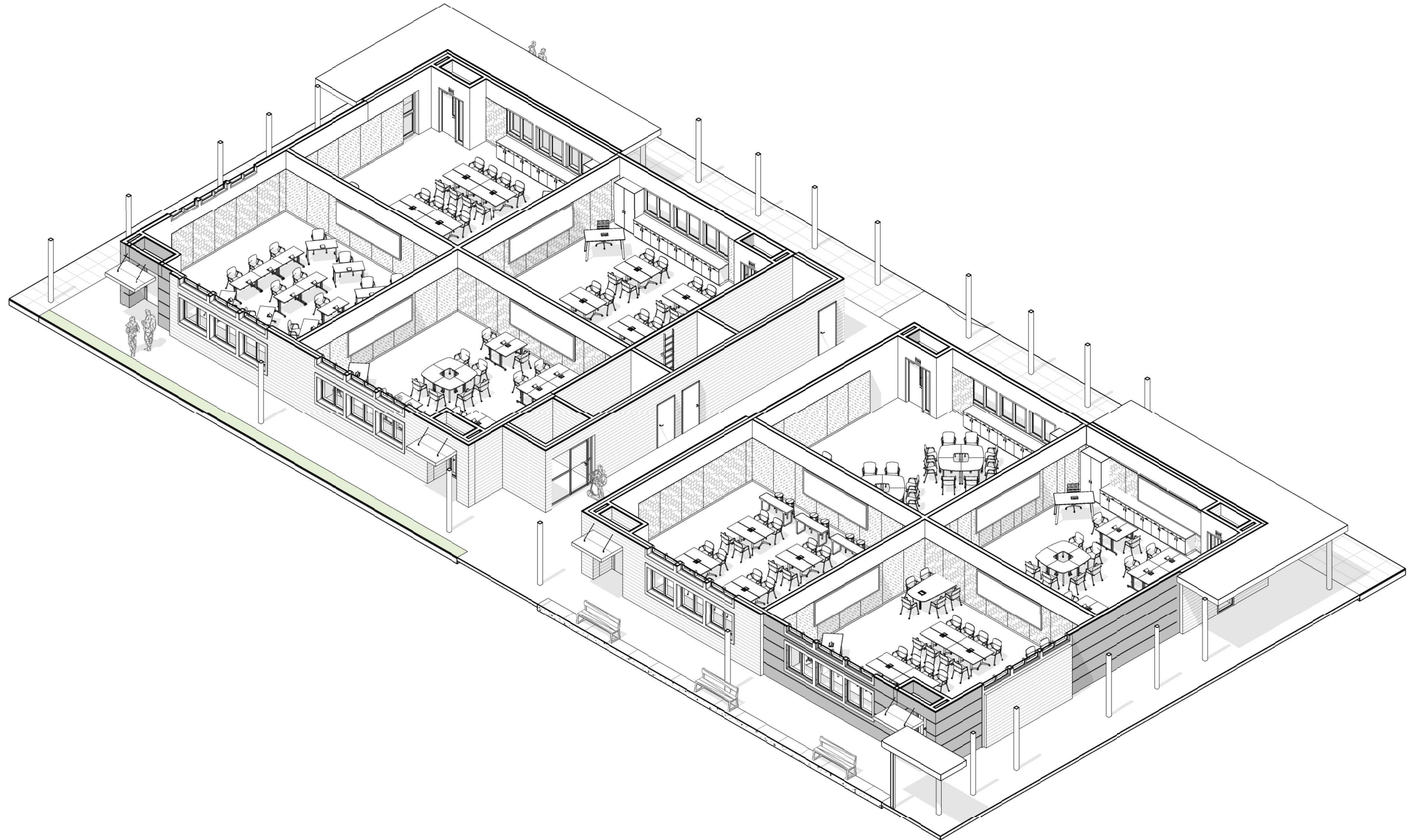








































Pewter  
Standing Seam  
Metal Roof



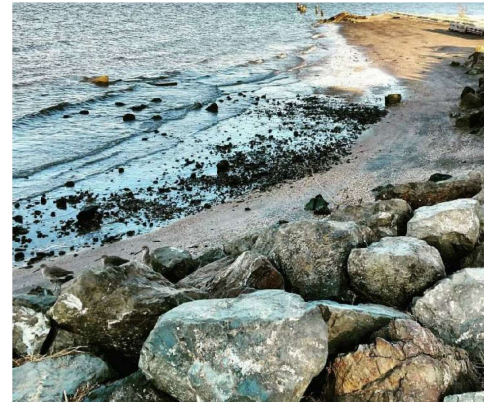
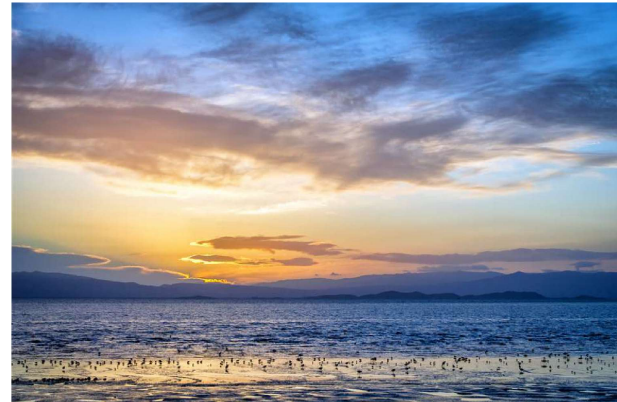
Sterling  
1591  
Field Color

Lucerne  
AF-530  
Accent Color

Buckland Blue  
HC-151  
Accent Color

Firefly  
299  
Hollow Metal  
Doors & Frames,  
Trim

Rocky Coast  
1595  
Hollow Metal  
Doors & Frames,  
Trim





# Construction Cost Projection

*Total Measures 'X' and 'T' Budgets:*

*\$87 Million (approx.) TOTAL Project Budgets*

*April, 2021 Measure 'T' Construction Cost Projection*

*\$52-\$53 Million*

*February, 2022 Initial Update*

*Approximately \$65 Million Construction Cost Projection*

*Construction Inflation Factors For Consideration:*

- Dramatic Inflation in Past 12 Months*
- Assumptions for Heightened Inflation for Coming 12-36 Months*

*Cost Management Approach*

- Compress Schedule When Possible*
- Utilize 'Bid Alternates'*



# Construction Schedule Projection

## Measure 'X' – Science and Drama

*Start Summer 2022*

*Completion December 2023*

## Measure 'T' – Academic Improvements + Gym + Sitework

*Start Summer 2023*

*Completion Dates:*

*Buildings: December 2024*

*Site + Fields: Summer 2025*