

Permanent Improvement Update

Green Local Schools



Board of Education Meeting
June 28, 2021

Permanent Improvement Fixed Costs

Personnel	25%	Debt payment	18%
Bus leases	4%	Technology	8%
Auditor fees	2%	Curriculum	6%
Fixed Costs	63%		
Emergency Carryover	10%		

Repairs, tiered projects, maintenance supplies and equipment = **27%** or **\$817,800/year** (approx)



Parking Lots

BULLDO**STRONG**

GHS / Stadium Lot

BEFORE



AFTER



GHS / Stadium Lot

BEFORE



AFTER



GHS / Stadium Lot

BEFORE



AFTER



GHS / Stadium Lot

BEFORE



AFTER



GHS Parking Lot (Catch Basin - Add)

BEFORE



AFTER



GHS Parking Lot (Catch Basin - Add)

BEFORE



AFTER



Stadium Fieldhouse

BEFORE



AFTER STORM



Stadium Fieldhouse

AFTER STORM



NEW LIGHTED SIGN



Stadium Fieldhouse

BEFORE



NEW





General Maintenance

BULLDO**STRONG**

Hot Water Plumbing (GHS)

BEFORE



AFTER



Sewage Line Repair

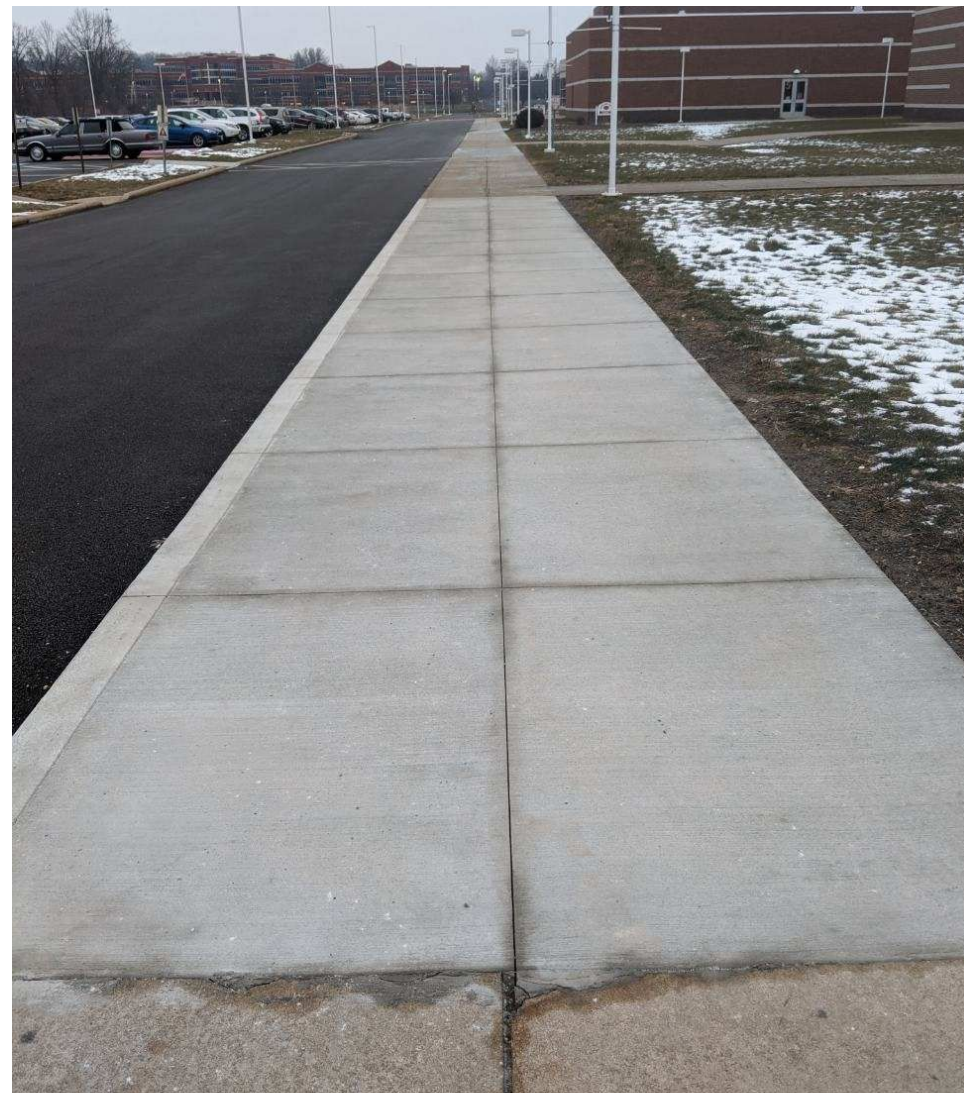


Sidewalk Replacement

BEFORE



NEW



Maintenance Equipment

Mower



Pickup Truck





Transportation

BULLDO**STRONG**

Transportation Vehicles

BUSES



VAN





Health

BULLDO**STRONG**

Hand Sanitizers (All Classrooms & Buses)



Higher Density Air Filters

CHANGES

MERV 10 to **MERV 13**

Semi-annually to **Quarterly**





VICTORY
INNOVATIONS CO

Electrostatic Sprayers

Hand Held



Backpack









Safety/Security

BULLDO**STRONG**



SROs



Deputy Todd Hart - GHS

Deputy Elisha Menefee - GMS

Deputy Tim Paul - GIS

Deputy Roger Morgan - GPS

Deputy Todd Buck - GWD



Vestibule Improvements (GIS)



Open Door Alarms

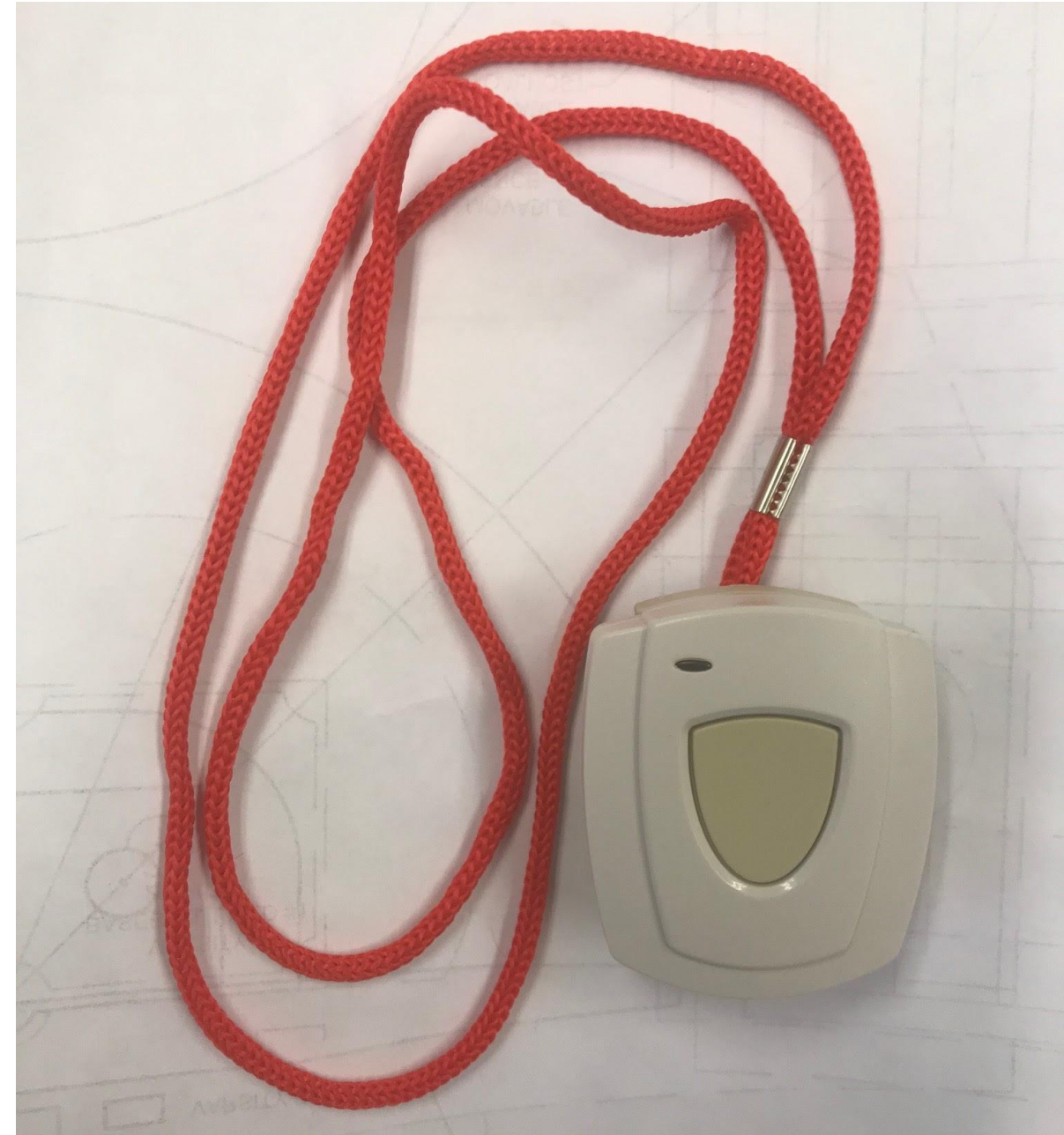
- All school building access doors
- Audible alarm
- Principal & SRO notification
- By-Pass card readers at selected doors

A photograph of a white warning sign with red and black text. The sign is mounted on a wall, and the background shows a dark, possibly outdoor, setting with some lights visible in the distance.

DO NOT OPEN
THIS DOOR FOR ANYONE
...even for someone you know.

Distress Pendants

- Issued to majority of building staffs
- Contacts building principal(s) & SRO
- To be activated for **medical emergencies, physical altercations beyond staff control or when a threat of bodily harm exists**



EMERGENCY Buttons

- 80+ in district school buildings
- Alerts to SCS & GFD dispatch, all building SROs, all district administrators
- Activates outdoor strobes
- SCS & GFD - heightened response
- To be activated **under CONFIRMED THREAT OF IMMINENT DANGER (LIFE OR DEATH)**
- Monitored by security cameras
- False reporting is a felony

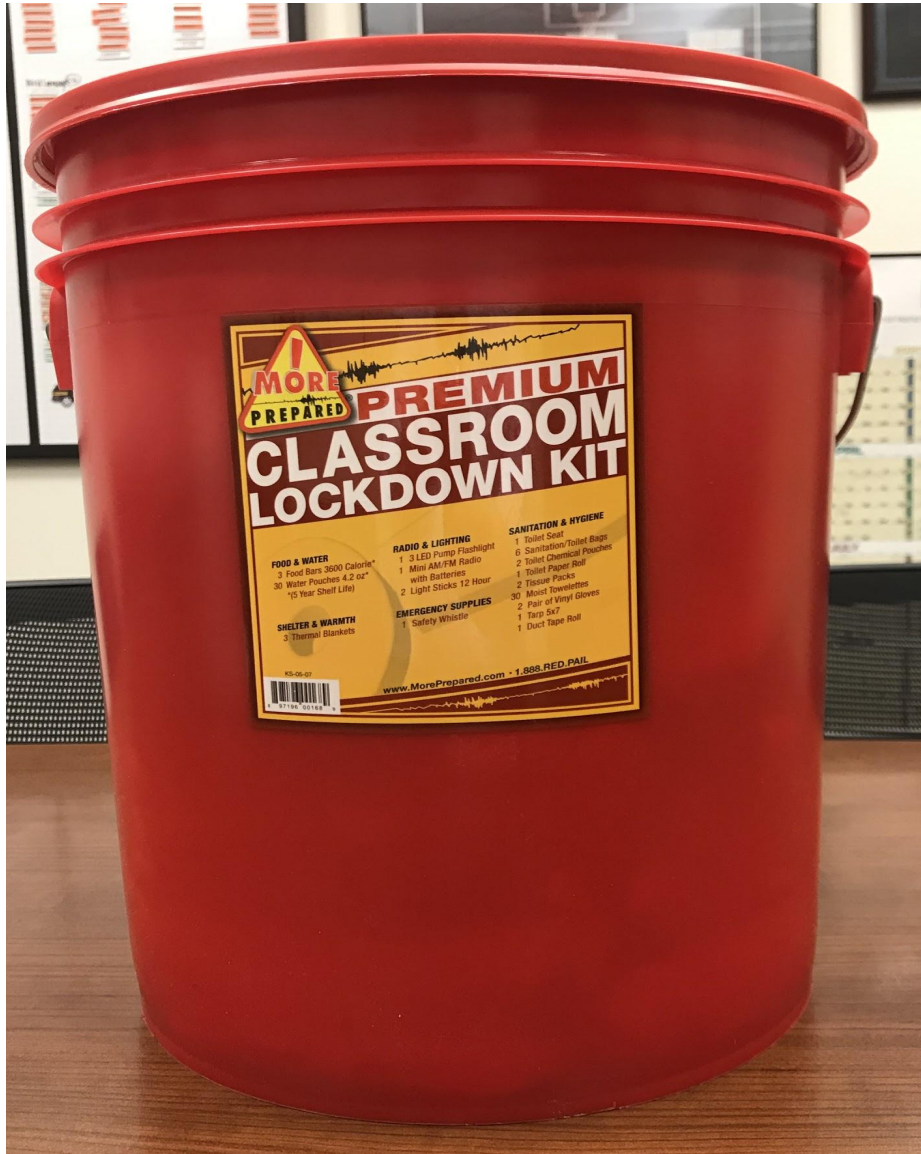


Radios

- (43) School buses
- (79) Handhelds
- Digital System
- Communication between buildings
- Building Communication with buses



Lockdown Kits



Lockdown Kit Contents

3 - 3600 Calorie Food Bars

30 - Water Pouches - 4.2 oz

3 - Emergency Thermal Blankets

1 - Mini AM/FM Radio w/ Batts

1 - Pump LED Flashlight

2 - 12 Hour Light Sticks

1 - Toilet Seat and Lid

1 - Toilet Paper Roll

6 - Sanitation Bags

2 - Toilet Chemical Pouches

2 - Pairs of Vinyl Gloves

30 - Moist Towelettes

2 - Tissue Packs

1 - Blue Vinyl Tarp - 5' x 7'

1 - Duct Tape - 10 yd

1 - Safety Whistle

1 - Glass Breaking Tool

1 - Trauma Kit

Trauma Kits



Eric Fledderjohann - CEO

Dr Austin Wellock - President



Trauma Kits

Qty (300) Aid-in Case *Lite**

2- Tourniquets
2 - Hemostatic Agents
1 - Chest Seal
1 - 4 x 4 Gauze Pad
1 - Trauma Pad
2- Nitrate Gloves
1 - Tape
1- Trauma Shears

Staff Training

*Supplied in each Lockdown Kit

Qty (5) Aid-in Case *Plus*

6 - Tourniquets
6 - Hemostatic Agents
6 - Chest Seal
6 - 4 x 4 Gauze Pad
6 - Trauma Pad
12- Nitrate Gloves
6 - Tape
6 - Trauma Shears

Staff Training

Safety/Security Bollards (GHS)

BEFORE



AFTER



Safety/Security Bollards (GMS)

BEFORE



AFTER





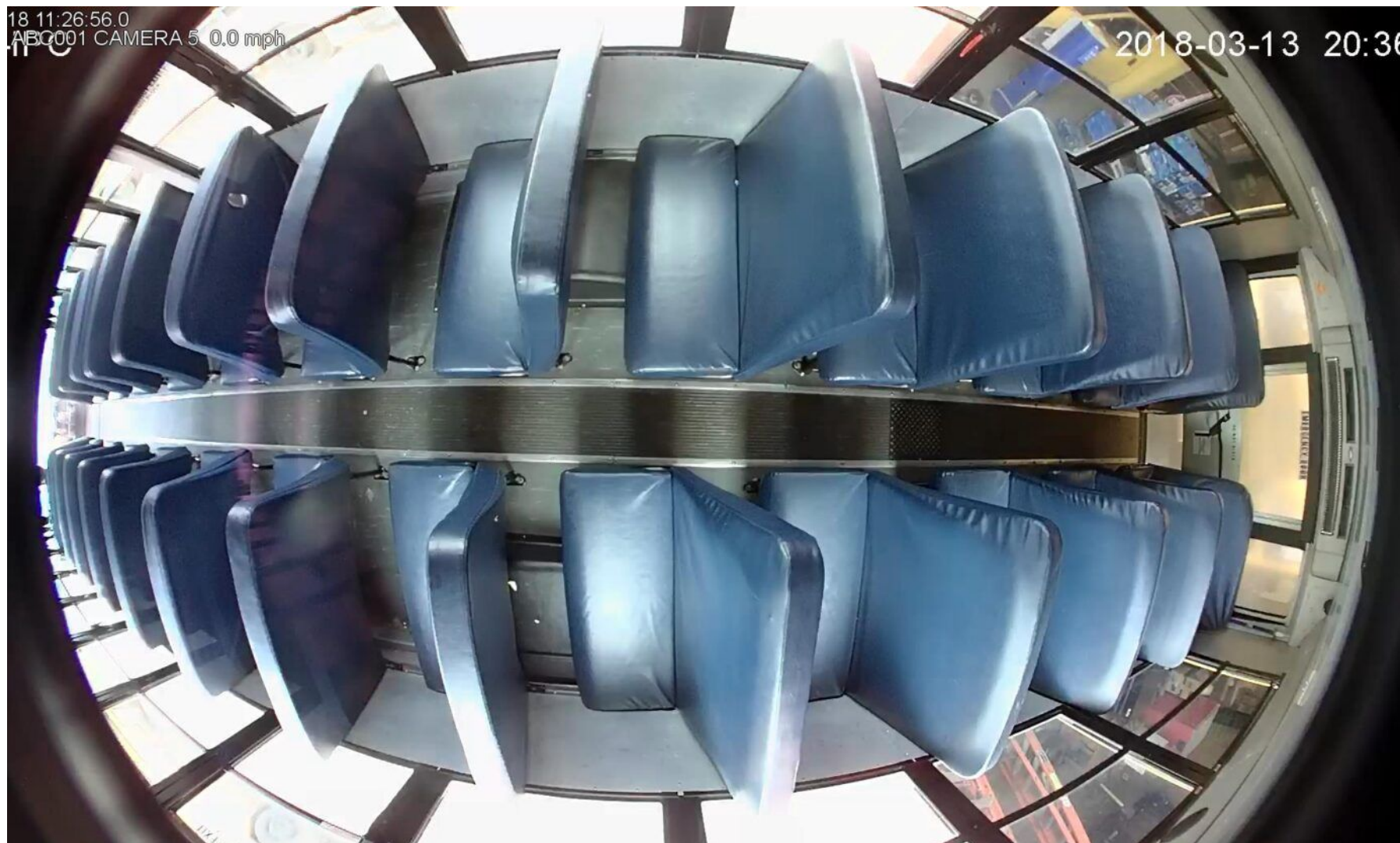
Bus Cameras

Installed on all buses

(5) Interior Cameras
- includes Shield Cam

(2) Stop Arm Cameras

1080p HD



Stop-Arm Violations

Frequency on the rise

National problem

Deputies & Troopers- tailing buses

28 violations in one day

Newswire Commercial Photo





3

BRK

BUS 709

0

13.5V

03/04/2008

03:31:08 PM

HS198 Camera

07/12/2019 07:12:10 Stop Arm Brake



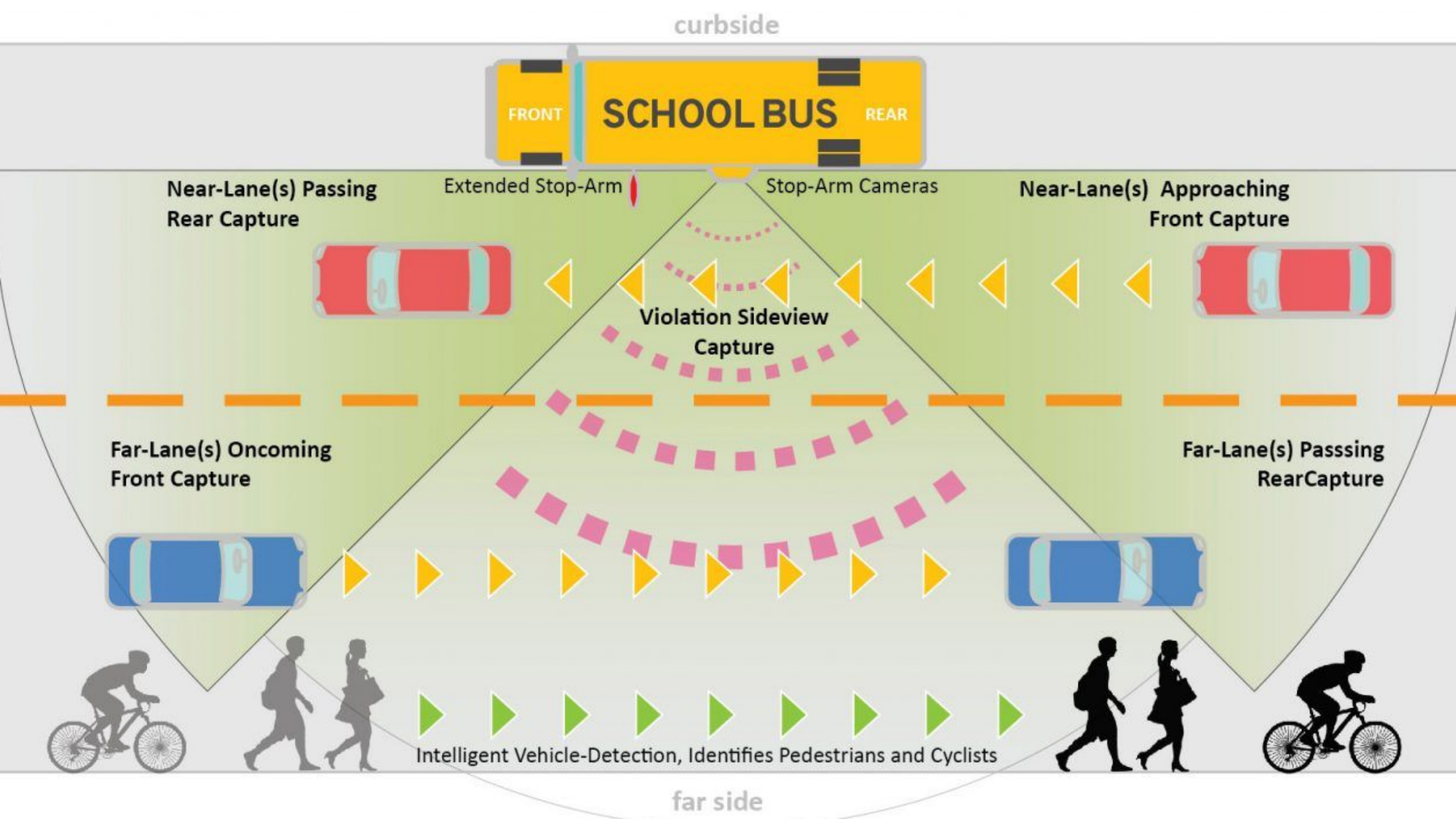
Bus Cameras

“STOP ARM” CAMERAS

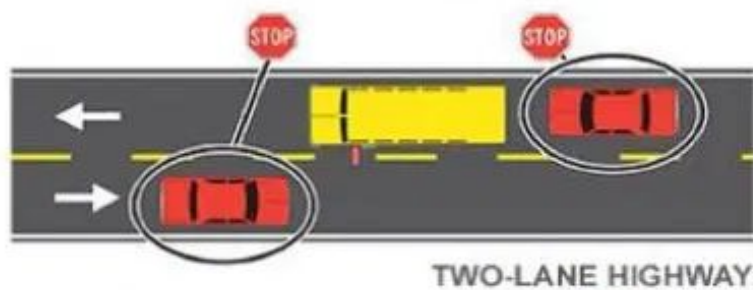


CAPTURED LICENSE PLATE

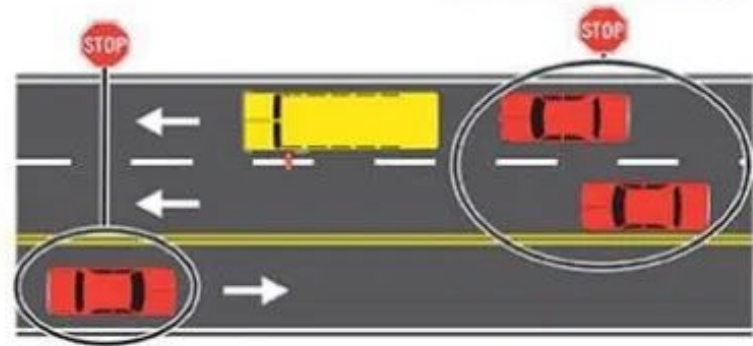




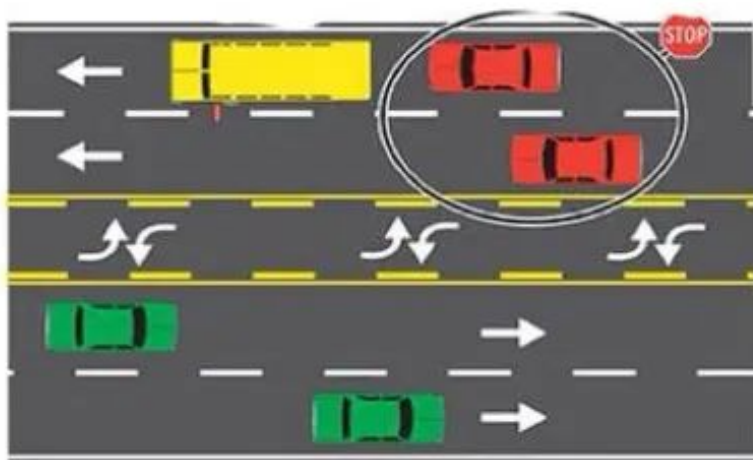
When to stop for a school bus in Ohio



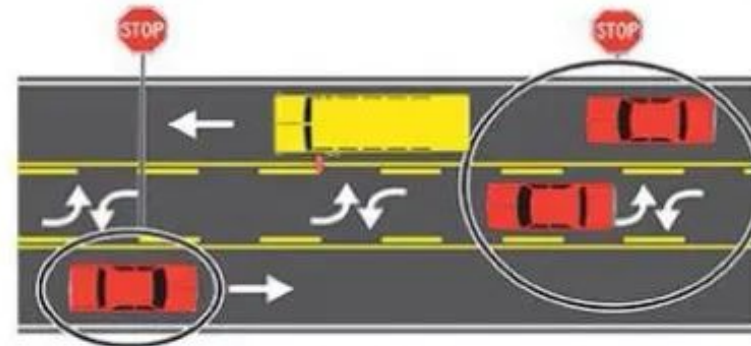
TWO-LANE HIGHWAY



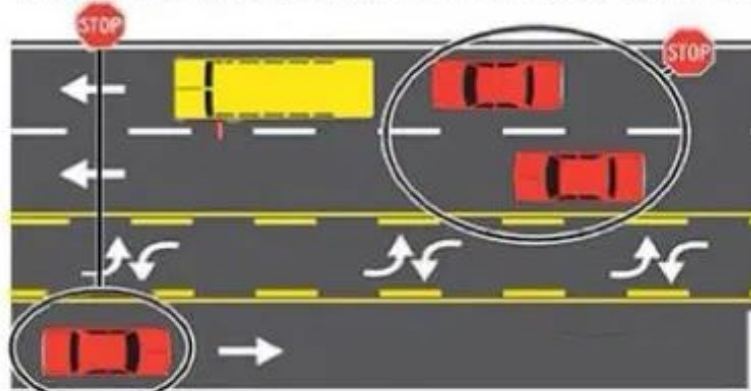
THREE-LANE HIGHWAY



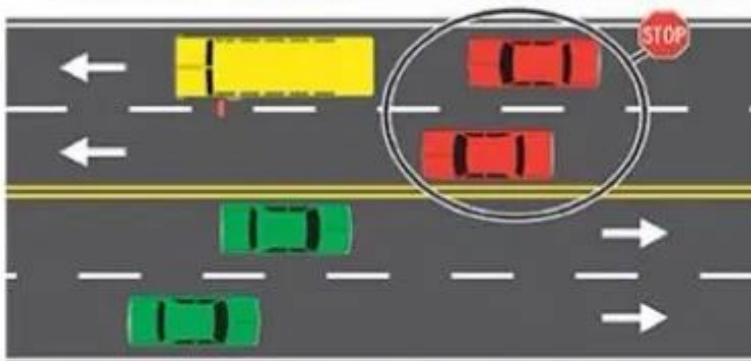
FOUR-LANE HIGHWAY WITH CENTER TURN LANE



TWO-LANE HIGHWAY WITH CENTER TURN LANE



THREE-LANE HIGHWAY WITH CENTER TURN LANE



FOUR-LANE HIGHWAY



Safety/Security Levy

- Bus Cameras (Fleet) - incl Stop-Arm Cams
- Atlas - PA/Security System (GPS)
- Electrostatic Sprayers
- Hand Sanitizer (All Classrooms)
- (4) additional SROs (GMS/GIS/GPS/GWD)
- Vestibule Upgrades (GWD/GIS/GHS)
- Vape Detectors (GHS & GMS)
- (2) Family Support Specialists (FSS)
- (1) Mental Health Consultant

Grants

- Trauma Stabilization Kits (District)
- Camera additions/upgrades (GHS & GPS)
- ID key card access system (GPS)
- Distress Pendants (District)
- Emergency Sheriff Buttons (District)
- Open Door Alarms (District)
- GPS System / Digital Route Sheets (Buses)
- Radio Upgrades
- School Bus #14 (Partial)

2021-22 PI Priorities

Tier 1

Demolition & repaving existing Bus Garage, Add'l Soccer field, Weight training equipment, School buses, Seal & paint GMS/GIS/STAD lots, Replacement of select school buildings (TBD), Roof replacement/repair (GHS), Atlas PA/Security system (GPS & GWD)

Tier 2

Replace Bus/Maintenance garages, Replace main gym scoreboards, GHS / GPS / GWD parking lots (Surface Treatment), Access road for softball field 1 & 2, Replace HVAC (RTU's) at GHS,

Tier 3

School van, Add'l baseball field, GIS boiler replacement

- In Progress

BULLDO**STRONG**