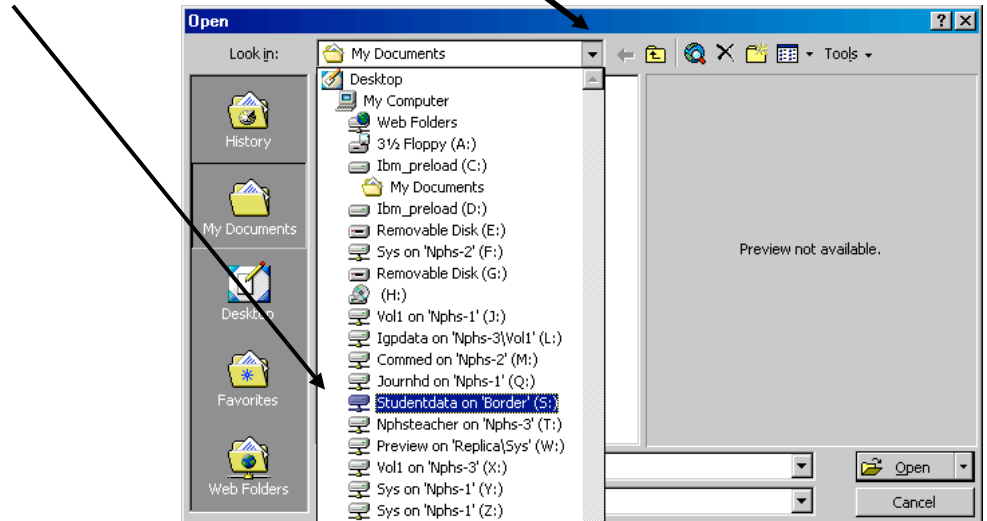


How To Access Student Portfolios

1. Start PowerPoint, Click **Open Existing Presentation** & Click **OK**
2. A new window will open... Click the **Down Arrow** by the "look in" box.
3. Choose **StudentData on 'Border' (S:)**



4. Now Open the appropriate folder depending on the graduation year of the student you are looking for, and then Open the folder of the student you are looking for.... Open their Electronic Portfolio Folder and you will see **Electronic Portfolio Presentation**. Open the presentation...
5. On the Menu Bar at Top Of Screen Click **Slide Show, View Show**....
6. Now Ready to Evaluate... Use Space Bar or Mouse Click to Advance Slides

