


ADDENDUM TO BID DOCUMENTS

 Pleasanton Unified School District	ADDENDUM 02
	Project: Staff Parking / Ballfield Fence at Foothill High School Project (2021-22.13)
	Date: April 20, 2022

The following clarifications are provided based on questions received or changes in District requirements and must be added/considered when completing your submittal:

Acknowledgement of receipt of this **ADDENDUM** is required in the bid form. Please clearly note the addendum date and number.

CHANGES TO SPECIFICATION AND DRAWINGS

1. **Subject:** Added Removal Note R13

Reference: A1.1

Attachment: A1.1

Description of Change: Replace sheet A1.1 in its entirety

2. **Subject:** Revision to Access and Construction Notes and Gate and Hardware Schedule

Reference: A1.3

Attachment: A1.3

Description of Change: Replace sheet A1.3 in its entirety

3. **Subject:** Revision to Access and Construction Notes and Gate and Hardware Schedule

Reference: A1.4

Attachment: A1.4

Description of Change: Replace sheet A1.4 in its entirety

4. Subject: Add Sheet A8.1 Typical Fencing Details

Reference: A8.1

Attachment: A8.1

Description of Change: Add sheet A8.1 Typical Fence Details

5. Subject: Revised Specification Section 32 31 32 Vehicular Slide Gate Operator

Reference: 32 31 32

Attachment: 32 31 32

Description of Change: Replace Specification Section 32 31 32 Vehicular Slide Gate Operator in it entirety

QUESTIONS:

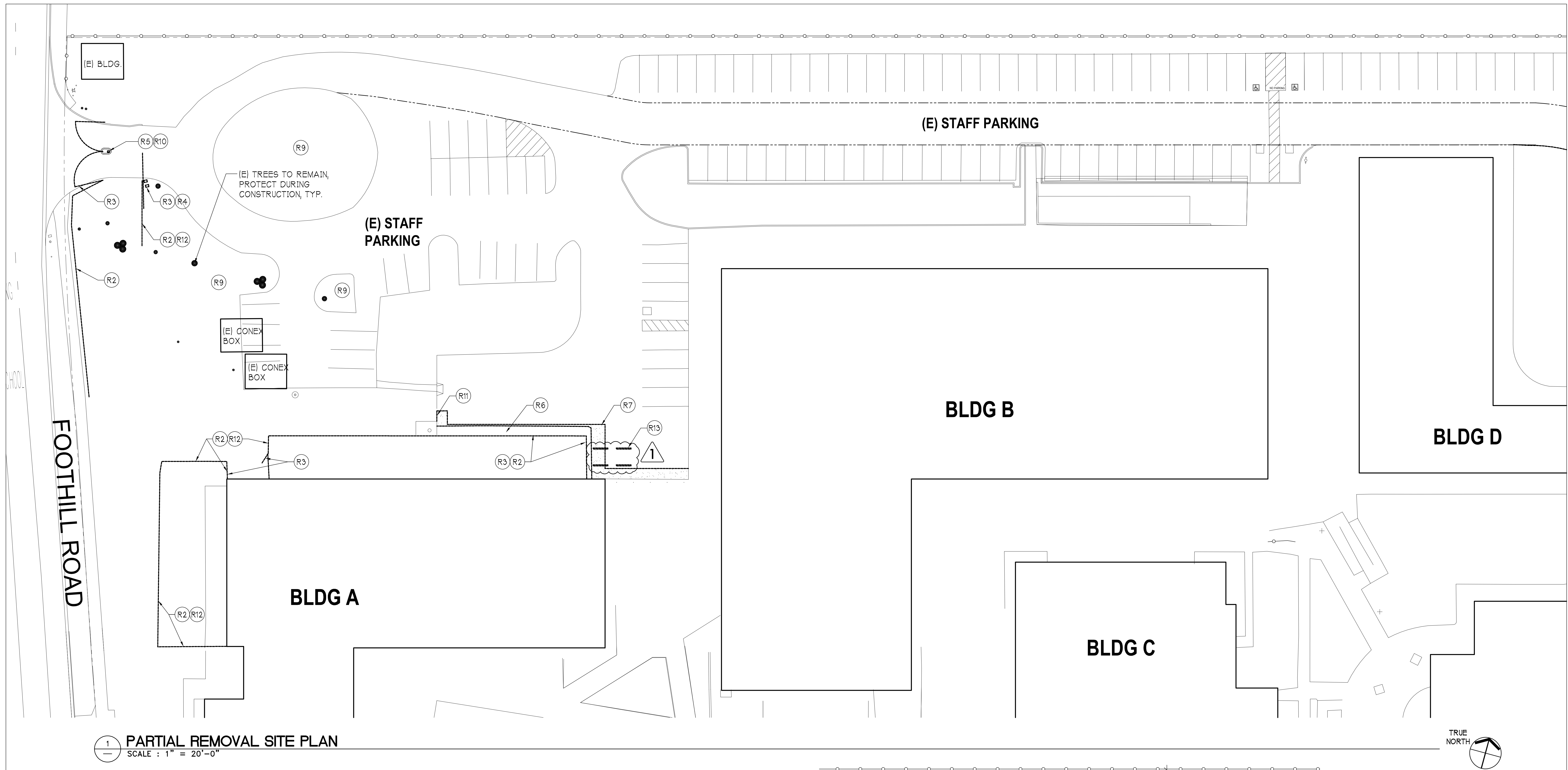
1. Use the following link to upload your bid to Google Forms:

1. https://docs.google.com/forms/d/1_5d_GdZXqBszkGlvchBzegoiYOsA6yyvWAYUwG9j3r4

2. Bid Opening Information: The Bids will be submitted no later than 2:00 PM and the Bid Opening will be conducted at 2:30 pm on April 26, 2022.

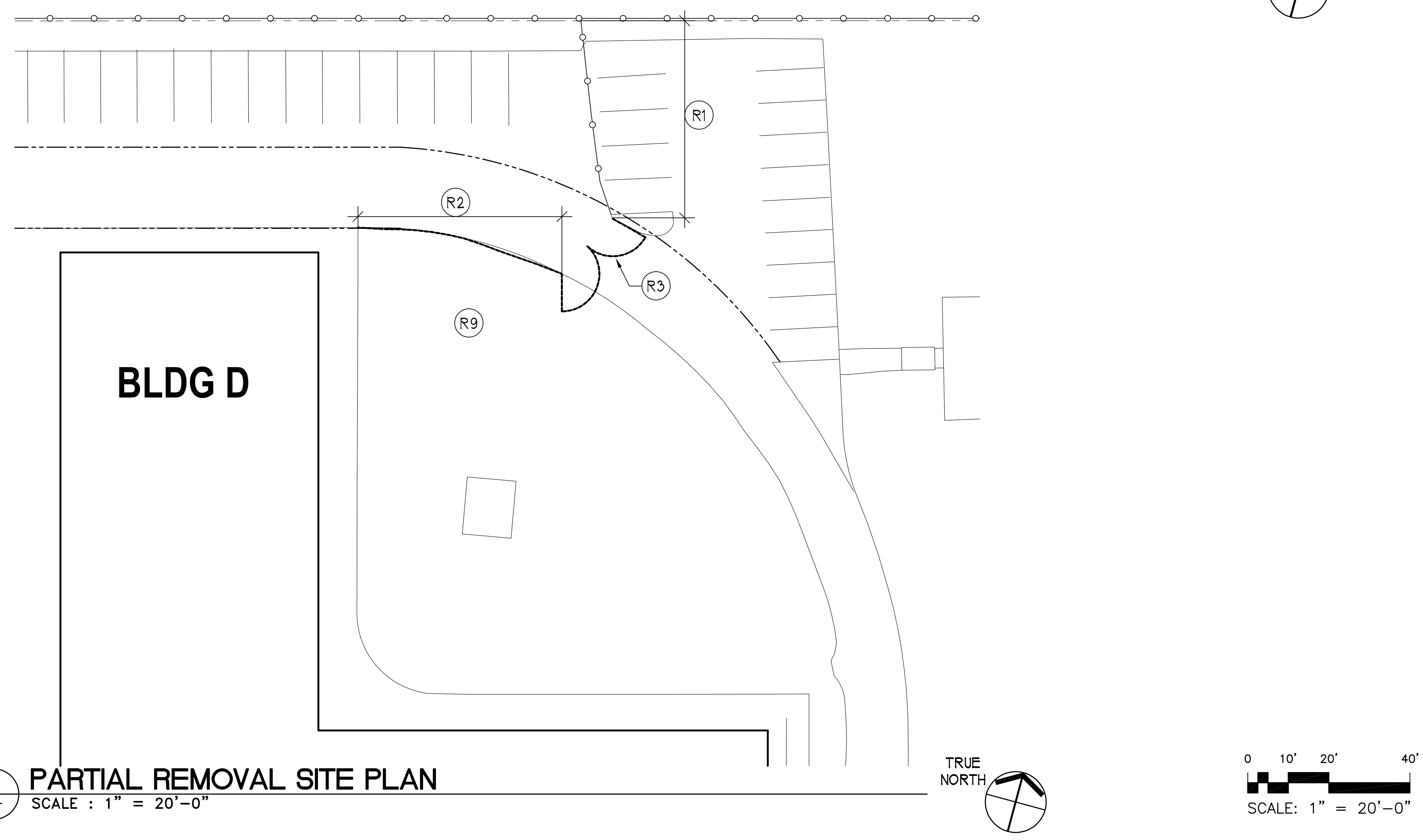
1. Meeting ID [https:// meet.google.com/avd-owfs-vnu](https://meet.google.com/avd-owfs-vnu)
2. Phone Numbers (US) +1 669-232-3342
3. PIN: 746 083 907#

END OF ADDENDUM 01



1 PARTIAL REMOVAL SITE PLAN
SCALE : 1" = 20'-0"

LEGEND	GENERAL NOTES	REMOVAL NOTES
<div><div><div></div><div>EXISTING PROPERTY LINE LINE</div></div><div><div></div><div>EXISTING FENCE TO REMAIN</div></div><div><div></div><div>ITEM TO BE REMOVED</div></div><div><div></div><div>(E) 20'-0" WIDE FIRE ACCESS</div></div><div><div></div><div>AC PAVING TO BE REMOVED, S.C.D.</div></div></div>	<div>A. PROVIDE ANY AND ALL REMOVAL WORK NECESSARY TO ALLOW FOR INSTALLATION AND/OR CONSTRUCTION OF WORK TO BE PROVIDED</div> <div>B. RETAIN AND REINSTALL ALL (E) SIGNAGE AT FENCES AND GATES. VERIFY LOCATION WITH DISTRICT.</div> <div>C. SALVAGE AND RETURN ANY PADLOCKS AND CHAINS THAT ARE REMOVED TO DISTRICT.</div> <div>D. PROVIDE NEW FENCE AND GATES AS INDICATED. WORK SHALL INCLUDE ALL FOOTINGS, MATERIALS, HARDWARE, ETC. NECESSARY FOR COMPLETE INSTALLATION. IRRIGATION AND UTILITY LOCATIONS SHOWN ARE ESTIMATED AND NEITHER VERIFIED NOR COMPLETE. CONTRACTOR MUST ENGAGE THE SERVICES OF AN UNDERGROUND LOCATOR TO PERFORM A COMPLETE SURVEY OF EFFECTED AREAS PRIOR TO FENCE LAYOUT.</div> <div>F. CONTRACTOR TO CONFIRM FIELD CONDITIONS AND POSSIBLE OBSTRUCTIONS AT (E) BUILDING FOOTINGS, BEFORE SETTING LOCATIONS OF FENCE POSTS. SUBMIT SHOP DRAWINGS FOR PROPOSED FENCE POST LAYOUT, FOR REVIEW BY ARCHITECT AND OWNER.</div> <div>G. CONTRACTOR IS TO LAY OUT LOCATION OF NEW FENCE AND GATES PRIOR TO STARTING CONSTRUCTION. CONFIRM LAYOUT WITH DISTRICT.</div> <div>H. ALL GATES MARKED FIRE DEPT. ACCESS MUST PROVIDE MIN 20'-0" CLEAR PASSAGE FOR FIRE DEPARTMENT EQUIPMENT. POSTS, HINGES, HARDWARE, ETC MAY NOT ENCROACH. GATES SHOULD SWING 180°.</div> <div>I. REFER TO SPECIFICATIONS FOR ADDITIONAL INFORMATION AND GATE HARDWARE.</div> <div>J. PEDESTRIAN GATES ARE TO PROVIDE MINIMUM CLEAR OPENING OF 32 INCHES. WHERE A GATE IS BEING REPLACED IN AN EXISTING OPENING, VERIFY EXISTING OPENING IS SUFFICIENT TO ACCOMMODATE NEW CLOSER, GATE AND HARDWARE AND STILL PROVIDE 32 INCH ACCESSIBLE CLEARANCE.</div> <div>K. PROVIDE DOUBLE LOOP AND 12" CHAIN WELDED TO GATE POST AT GATES WHERE PADLOCKS ARE SCHEDULED.</div> <div>L. VERIFY SIZE OF EXISTING GATES TO BE REPLACED IN FIELD. EXISTING GATE POSTS ARE TO REMAIN, UNO.</div> <div>M. WHERE EXISTING FENCES AND GATES ARE MODIFIED, PAINT AREA OF WORK TO MATCH EXISTING FINISH. SEE SPECIFICATIONS FOR ADDITIONAL INFORMATION.</div>	<div>(R1) (E) FENCE TO REMAIN, PROTECT DURING CONSTRUCTION.</div> <div>(R2) REMOVE PORTION OF (E) FENCE AS INDICATED.</div> <div>(R3) REMOVE (E) GATE AND POSTS.</div> <div>(R4) REMOVE (E) GATE OPERATOR/MOTOR, UNDERGROUND POWER & CONDUIT TO REMAIN.</div> <div>(R5) REMOVE (E) KEYPAD, (E) POST AND ELECTRICAL CONDUIT TO REMAIN.</div> <div>(R6) REMOVE PORTION OF (E) CONC. WALK, S.C.D.</div> <div>(R7) REMOVE PORTION OF (E) AC PAVING FOR INSTALLATION OF CONC. WALK, S.C.D.</div> <div>(R8) (E) AC PAVING TO REMAIN</div> <div>(R9) (E) LANDSCAPE AREA</div> <div>(R10) (E) CONC. ISLAND AND BOLLARD TO REMAIN. PROTECT DURING CONSTRUCTION</div> <div>(R11) SAWCUT AND REMOVE PORTION OF (E) CONC CURB TO ALLOW FOR CONCRETE WALK INSTALLATION</div> <div>(R12) REMOVE (E) CONC. MOW STRIP AND FOOTING TO ALLOW FOR PLACEMENT OF NEW FENCE, FOOTINGS AND MOW STRIP</div> <div>(R13) REMOVE AND RETAIN (E) BIKE RACKS FOR REINSTALLATION, TYP OF 4.</div>



2 PARTIAL REMOVAL SITE PLAN
SCALE : 1" = 20'-0"

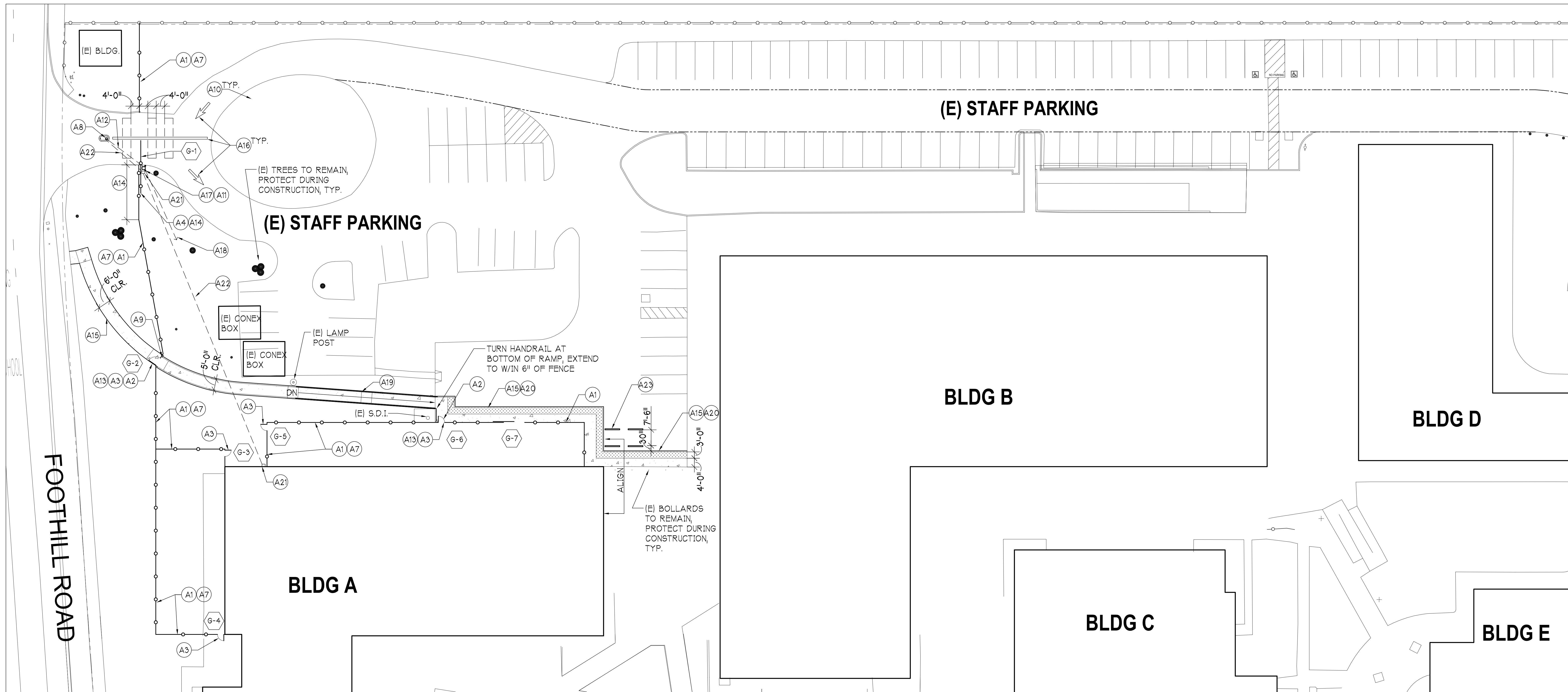
**PLEASANTON
UNIFIED SCHOOL
DISTRICT
FOOTHILL H.S.
PH. 2 FENCING**
PLEASANTON, CA

JOB NO. 70124.02
DRAWN -
CHECKED
JOB CAPTAIN
DATE
100% CD 03/28/2022
1 ADDENDUM # 04/11/2022

DRAWING TITLE
**ENLARGED
FENCING REMOVAL
SITE PLAN
N/W CORNER**

SCALE AS NOTED

A1.1
COPYRIGHT © 2018 HKIT ARCHITECTS



1 PARTIAL CONSTRUCTION SITE PLAN
SCALE : 1" = 20'-0"

LEGEND	
	GATE WITH GATE NUMBER SEE GATE SCHEDULE
	EXISTING PROPERTY LINE LINE
	EXISTING FENCE TO REMAIN
	FENCE, SEE KEYNOTES AND SPECS
	APPROX. LOCATION OF UNDERGROUND ELECTRICAL WIRES AND CONDUIT
	(E) 20'-0" WIDE FIRE ACCESS
	CONCRETE WALK, S.C.D.
	TRUNCATED DOMES, S.C.D.

GENERAL NOTES

A. PROVIDE ANY AND ALL REMOVAL WORK NECESSARY TO ALLOW FOR INSTALLATION AND/OR CONSTRUCTION OF WORK TO BE PROVIDED.

B. RETAIN AND REINSTALL ALL (E) SIGNAGE AT FENCES AND GATES. VERIFY LOCATION WITH DISTRICT.

C. SALVAGE AND RETURN ANY PADLOCKS AND CHAINS THAT ARE REMOVED TO DISTRICT.

D. PROVIDE NEW FENCE AND GATES AS INDICATED. WORK SHALL INCLUDE ALL FOOTINGS, MATERIALS, HARDWARE, ETC. NECESSARY FOR COMPLETE INSTALLATION.

E. IRRIGATION AND UTILITY LOCATIONS SHOWN ARE ESTIMATED AND NEITHER VERIFIED NOR COMPLETE. CONTRACTOR MUST ENGAGE THE SERVICES OF AN UNDERGROUND LOCATOR TO PERFORM A COMPLETE SURVEY OF EFFECTED AREAS PRIOR TO FENCE LAYOUT.

F. CONTRACTOR TO CONFIRM FIELD CONDITIONS AND POSSIBLE OBSTRUCTIONS AT (E) BUILDING FOOTINGS, BEFORE SETTING LOCATIONS OF FENCE POSTS. SUBMIT SHOP DRAWINGS FOR PROPOSED FENCE POST LAYOUT, FOR REVIEW BY ARCHITECT AND OWNER.

G. CONTRACTOR IS TO LAY OUT LOCATION OF NEW FENCE AND GATES PRIOR TO STARTING CONSTRUCTION. CONFIRM LAYOUT WITH DISTRICT.

H. ALL GATES MARKED FIRE DEPT. ACCESS MUST PROVIDE MIN. 20'-0" CLEAR PASSAGE FOR FIRE DEPARTMENT EQUIPMENT. POSTS, RINGS, HARDWARE, ETC. MAY NOT ENCR OACH GATES SHOULD SWING 180°.

I. REFER TO SPECIFICATIONS FOR ADDITIONAL INFORMATION AND GATE HARDWARE.

J. PEDESTRIAN GATES ARE TO PROVIDE MINIMUM CLEAR OPENING OF 32 INCHES. WHERE A GATE IS BEING REPLACED IN AN EXISTING OPENING, VERIFY EXISTING OPENING IS SUFFICIENT TO ACCOMMODATE NEW CLOSER, GATE AND HARDWARE AND STILL PROVIDE 32 INCH ACCESSIBLE CLEARANCE.

K. PROVIDE DOUBLE LOOP AND 12" CHAIN WELDED TO GATE POST AT GATES WHERE PADLOCKS ARE SCHEDULED.

L. VERIFY SIZE OF EXISTING GATES TO BE REPLACED IN FIELD. EXISTING GATE POSTS ARE TO REMAIN, UNO.

M. WHERE EXISTING FENCES AND GATES ARE MODIFIED, PAINT AREA OF WORK TO MATCH EXISTING FINISH. SEE SPECIFICATIONS FOR ADDITIONAL INFORMATION.

N. FOR FENCE POSTS AT (E) CONC. FTGS. SEE DET. 14/A8.1

O. FOR TYP. FENCE CONNECTIONS AT BUILDING, SEE DET. 15 & 16/A8.1

ACCESS AND CONSTRUCTION NOTES

(A1) PROVIDE 6' H. STEEL PICKET FENCE, SEE DET. 14/A8.1 & SEE SPECS.

(A2) PROVIDE 5'-0" LEVEL LANDING AT EACH SIDE OF GATE. SEE DET. 13/A8.1

(A3) PROVIDE STEEL PICKET SWING GATES AND HARDWARE, SEE GATE SCHEDULE.

(A4) PROVIDE STEEL PICKET ROLLING TRAFFIC GATE AND OPERATOR, SEE GATE SCHEDULE. SEE DET. 17/A8.1 FOR GATE TRACK.

(A5) PROVIDE 6' H. CHAIN LINK FENCE, SEE DET. 11/A8.1 AND SEE SPECS.

(A6) PROVIDE CHAIN LINK ACCESS GATE AND HARDWARE, SEE GATE SCHEDULE.

(A7) PROVIDE CONC. MOW STRIP AT FENCE CROSSING LANDSCAPE AREA. FENCE POST FOOTINGS TO BE 3'-0" FROM STRIP, SEE DET. 27/A8.1

(A8) CONTRACTOR TO PROVIDE ELECTRIC ENTRY KEYPAD AND DOUBLE BOX ON (E) POST, SEE SPECIFICATIONS. PROVIDE POWER AND LOW VOLTAGE WIRING FOR KEYPAD AND CARD READER. OWNER WILL PROVIDE AND INSTALL CARD READER.

(A9) PROVIDE 12" SIGN, SEE DET. 18/A8.1

(A10) PROVIDE VEHICLE DETECTION LOOPS AT TRAFFIC GATE. SEE SPECIFICATIONS. MINIMIZE SAWCUT AREA TO AC PAVING, PATCH BACK FLUSH WITH (E) WHERE REMOVED OR DAMAGED. VERIFY PLACEMENT WITH MANUFACTURER.

(A11) PROVIDE STEEL BOLLARDS AS SHOWN. SEE DET. 9/A8.1

(A12) PROVIDE CONDUIT FOR POWER FROM KEY PAD & CARD READER TO GATE CONTROL BOX. MINIMIZE SAWCUT AREA TO CONCRETE AND AC PAVING. PATCH BACK CONCRETE AND AC PAVING FLUSH WITH (E) WHERE REMOVED OR DAMAGED. REPAIR OR REPLACE ANY DAMAGE TO LANDSCAPING. CONDUIT IS TO BE BURIED W/ A MIN. 24" COVER TO TOP. EXTEND CONC. ISLAND AS REQUIRED TO PROTECT CONDUIT.

(A13) PROVIDE METAL SECURITY PANEL AT GATE AND FENCE WHERE PANIC HARDWARE IS INSTALLED. SEE DET. 14/A8.1

(A14) PROVIDE METAL MESH AT ROLLING TRAFFIC GATE AND ADJACENT FENCE, SEE SPECIFICATIONS.

(A15) PROVIDE CONC. PATHWAY, S.C.D.

(A16) PAINT TRAFFIC DIRECTION ARROWS AND STRIPES, SEE SPECIFICATIONS.

(A17) PROVIDE GATE OPERATOR/MOTOR ON CONC. PAD. SEE SPECIFICATIONS.

(A18) CONNECT POWER FOR GATE OPERATOR TO (E) SUPPLY AT BUILDING. REUSE (E) CONDUIT, VERIFY EXACT LOCATION WITH FIELD.

(A19) PROVIDE CONC. RAMP AND HANDRAILS, MAX SLOPE 1:12. S.C.D. AND SEE DET. 5/A8.1

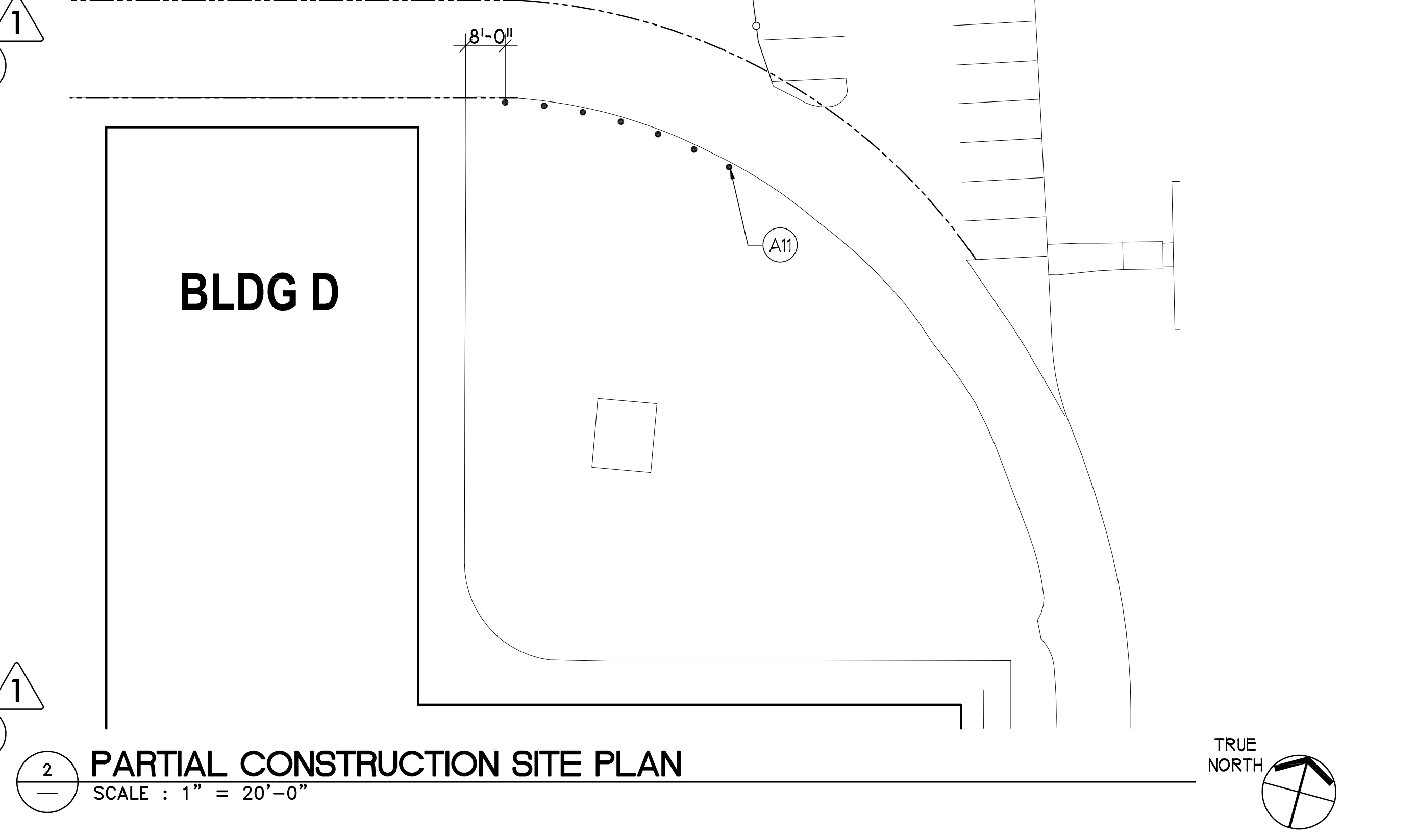
(A20) PROVIDE 1" CONDUIT FOR LOW VOLTAGE WIRING FROM KEY PAD & CARD READER MINIMIZE SAWCUT AREA TO CONCRETE AND AC PAVING. PATCH BACK CONCRETE AND AC PAVING FLUSH WITH (E) WHERE REMOVED OR DAMAGED. REPAIR OR REPLACE ANY DAMAGE TO LANDSCAPING. CONDUIT IS TO BE BURIED W/ A MIN. 24" COVER TO TOP.

(A21) PROVIDE 6' H. CHAIN LINK FENCE, SEE DET. 11/A8.1 AND SEE SPECS.

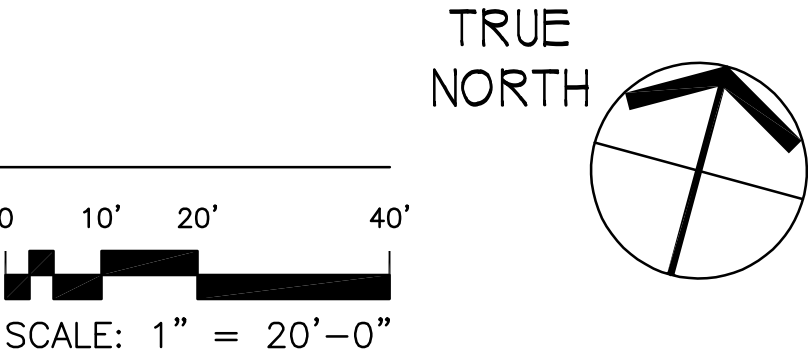
(A22) PROVIDE 5'-0" LEVEL LANDING AT EACH SIDE OF GATE. SEE DET. 13/A8.1

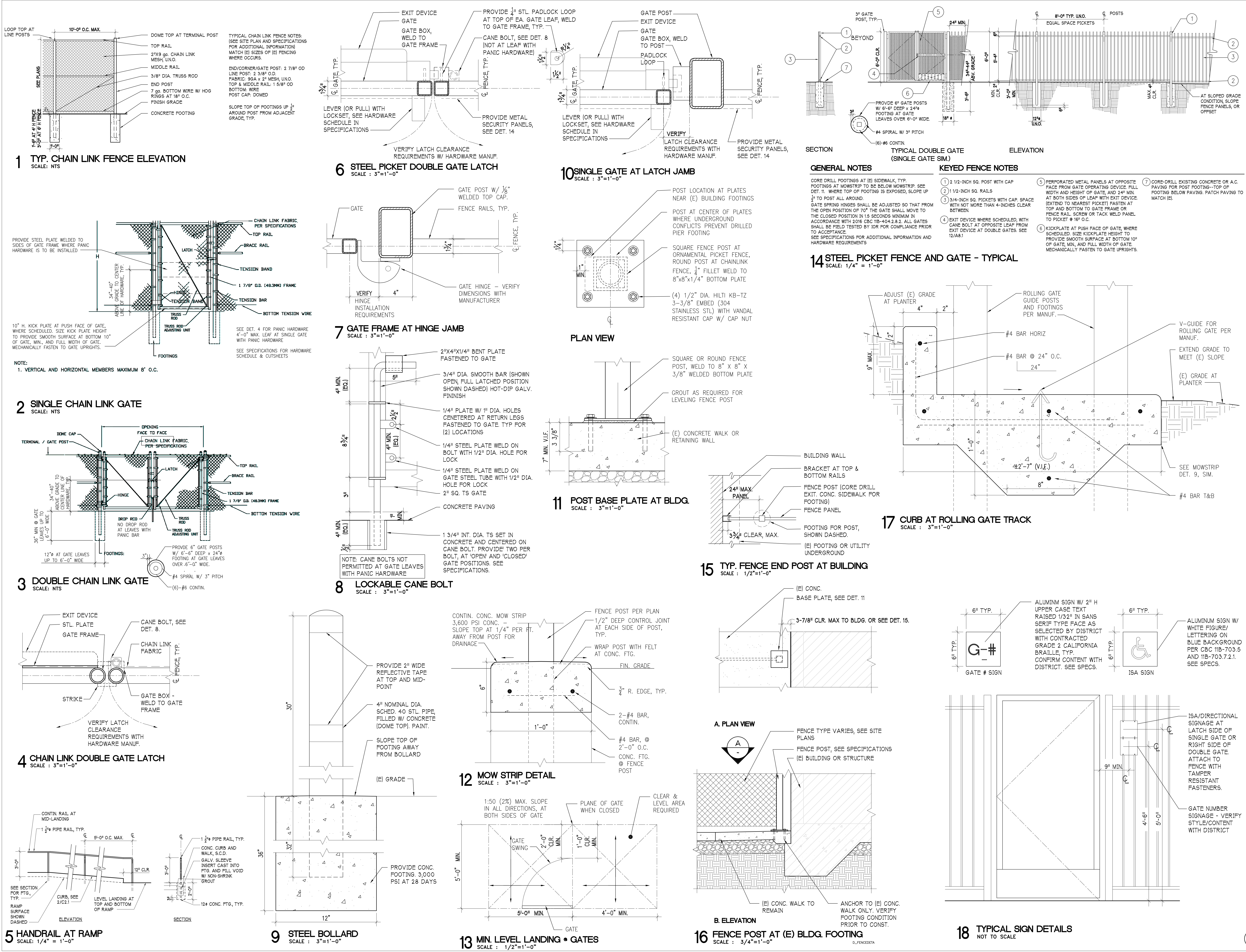
(A23) REINSTALL (E) BIKE RACKS (TYP. OF 4). PROVIDE ANCHOR BOLT AT EACH FASTENING LOCATION, EMBED MIN 6" INTO PAVING, EPOXY SET.

GATE NOTES											
1. PROVIDE GATE NUMBER SIGN AT EACH GATE. VERIFY CONTENT WITH DISTRICT. SEE DET. 18/A8.1											
2. FOR TYPICAL CHAIN LINK FENCE AND GATE SEE DETAILS 2-4/A8.1											
3. FOR TYPICAL STEEL PICKET FENCE AND GATES, SEE DETAILS 6, 7 AND 10/A8.1											
4. FOR LANDINGS AT PEDESTRIAN GATES WITH PANIC HARDWARE, SEE DET. 13/A8.1											
5. VERIFY EXACT LOCATION OF GATES IN FIELD.											
6. REINSTALL (E) SIGNAGE AT GATES BEING REPLACED.											
GATE AND HARDWARE SCHEDULE											
GATE NO.	NOMINAL GATE OPENING SIZE	TYPE	GATE MAT. FIN.	CLR.	FRAME MAT. FIN.	HWDR CLR.	SCHED.	REMARKS			
G-1	25'-0"x6'-0"	ROLL	STL.	PWDR.	BLK.	STL.	POWR.	BLK.	S1	REPLACE (E) ROLLING GATE & OPERATOR/ CARD READER	
G-2	4'-0"x6'-0"	SNGL.	STL.	PWDR.	BLK.	STL.	POWR.	BLK.	S2	PROVIDE PANIC HWDR.	
G-3	3'-0"x6'-0"	SNGL.	STL.	PWDR.	BLK.	STL.	POWR.	BLK.	S3		
G-4	3'-0"x6'-0"	SNGL.	STL.	PWDR.	BLK.	STL.	POWR.	BLK.	S2		
G-5	3'-0"x6'-0"	SNGL.	STL.	PWDR.	BLK.	STL.	POWR.	BLK.	S3		
G-6	4'-0"x6'-0"	SNGL.	STL.	PWDR.	BLK.	STL.	POWR.	BLK.	S2	PROVIDE PANIC HWDR.	
G-7	10'-0"x6'-0"	ROLL	STL.	PWDR.	BLK.	STL.	POWR.	BLK.	S4		
G-8	NOT USED										
G-9	4'-0"x6'-0"	SNGL.	CL.	MANUF.	-	CL.	MANUF.	-	C1	PROVIDE PANIC HWDR.	
G-10	3'-0"x6'-0"	SNGL.	CL.	MANUF.	-	CL.	MANUF.	-	C2		
G-11	3'-0"x6'-0"	SNGL.	CL.	MANUF.	-	CL.	MANUF.	-	C2		
G-12	12'-0"x6'-0"	SNGL.	CL.	MANUF.	-	CL.	MANUF.	-	C2		
G-13	NOT USED										
G-14	3'-0"x6'-0"	SNGL.	CL.	MANUF.	-	CL.	MANUF.	-	C2		
G-15	3'-0"x6'-0"	SNGL.	CL.	MANUF.	-	CL.	MANUF.	-	C2		
G-16	3'-0"x6'-0"	SNGL.	CL.	MANUF.	-	CL.	MANUF.	-	C2		



2 PARTIAL CONSTRUCTION SITE PLAN
SCALE : 1" = 20'-0"





SECTION 32 31 32

VEHICULAR SLIDE GATE OPERATOR

PART 1 GENERAL

1.1 RELATED DOCUMENTS

- A. Drawings and general provisions of the Contract, including General and Supplementary Conditions and Division 01 Specification Sections, apply to this Section.

1.2 SECTION INCLUDES

- A. Electric gate operators.
 - 1. DoorKing Model 9000.
- B. Parking gates and operators.
- C. Sensors and controls.
- D. *Keypad with Fire Department Override (Contractor Furnished and Contractor Installed).*
- E. *Card Reader (Owner Furnished and Owner Installed).*

1.3 RELATED SECTIONS

- A. Division 03 Section “Cast-in-Place Concrete”.
- B. Division 32 Section Decorative Metal Fences Gates and Hardware.
- C. Electrical Work. Reuse existing wiring to replace existing rolling gate, operator and card reader (Owner Furnished and Installed). Field verify existing conditions for compliance with replacement work indicated.

1.4 REFERENCES

- A. Underwriters Laboratories (UL): UL 325 – Standard for Safety for Door, Drapery, Gate, Louver, and Window Operators and Systems.
- B. Canadian Standards Association (CSA): CSA C22.2 No. 247.
- C. Underwriters Laboratories (UL): UL 991 – Standard for Tests for Safety Related Controls Employing Solid-State Devices.
- D. American Society Testing Materials (ASTM): ASTM F2200 – Standard Specification for Automated Vehicular Gate Construction.
- E. National Electrical Manufacturers Association (NEMA): NEMA ICS 6 – Industrial Control Systems: Enclosures.

1.5 SUBMITTALS

- A. Product Data: Manufacturer’s data sheets on each product to be used, including:

VEHICULAR SLIDE GATE OPERATOR 32 31 32 - 1

1. Preparation instructions and recommendations.
 2. Storage and handling requirements.
 3. Installation methods.
- B. Shop Drawings: Submit shop drawings showing layout, profiles, and product components, including anchorage, edge connections, and accessories.
1. Operation, installation, and maintenance manuals including wire diagrams.
 2. Risers, layouts, and special wiring diagrams showing any changes to standard drawings.
- 1.6 DELIVERY, STORAGE, AND HANDLING
- A. Deliver, store, and handle materials and products in strict compliance with manufacturer's instructions and industry standards.
- B. Store products indoors in manufacturer's original containers and packaging with labels clearly identifying product name and manufacturer. Protect from damage.
- 1.7 QUALITY ASSURANCE
- A. Manufacturer Qualifications: Substantial transformation and final assembly shall occur in the United States of America per Section 1605 of the ARRA-09.
- B. Installer Qualifications: Installation performed by factory authorized dealer contractor specifically trained in gate operator systems of the type found within this section.
1. Provide documentation of maintenance and repair service availability for emergency conditions.
 2. Provide quarterly maintenance for one year following Substantial Completion of the Project.
- 1.8 WARRANTY
- A. Manufacturer's standard five year warranty.

PART 2 PRODUCTS

2.1 MANUFACTURERS

- A. Acceptable Manufacturer: DoorKing, Inc.; 120 S. Glasgow Ave; Inglewood, CA 90301; Toll-Free Tel: 800-826-7493; Tel: 310-645-0023; Fax: 310-641-1586; Email: ghendrix@doorking.com; Web: doorking.com or approved equal.

2.2 SLIDING GATE OPERATORS

- A. Microprocessor based solid-state control board interacting with card readers (*Owner Furnished Owner Installed*), RF transmitters, access control systems, ticket machines, other activating devices as required, external devices (photo-eyes, contact edges) for entrapment protection and vehicle (loop) sensing systems. Control board shall include built-in close timer (1-25 seconds), built-in ports for two (2) plug-in loop detectors, partial open input, programming switches to set various operating modes, inherent magnetic pulse obstruction sensing reverse system. System shall employ Fail-Safe operation upon primary (AC) power outage.

VEHICULAR SLIDE GATE OPERATOR 32 31 32 - 2

1. Compliance: Compliant to UL 325, UL 991 and CSA C22.2 No. 247 and listed by Intertek Testing Laboratories NA, Inc. (ETL), a Nationally Recognized Testing Laboratory.
 - a. This model is intended for use in Class I, II, III and IV vehicular slide gate applications.
2. Warranty: Five (5) year manufacturer's standard warranty.
3. Maximum Gate Length:
 - a. 35-feet with 1 HP motor.
4. Maximum Gate Weight:
 - a. 1500 Lbs. with 1 HP motor.
5. Operator speed: approximately 11-inches per second.
6. Enclosure: polyethylene, 0.125 inch (3.175 mm) 390 texture gray.
7. Configuration: Right hand mount; rear mounting configurations.
8. Mounting: Pad or post mount.
9. Electrical Power Requirements: 115/208/230/460/575 VAC.
10. Motor: Continuous Duty Motor.
 - a. 1 HP.
11. Dead Bolt Lock: Solenoid dead bolt engages if an attempt is made to force the gate open.
12. Fail-Safe Operation: Upon loss of primary (AC) power, system shall automatically be transferred to a fail-safe mode allowing the gate to be pushed open without the use of special knowledge, keys or other releasing mechanisms.
13. Primary Reduction: Adjustable clutch, single cog belt drive train.
14. Pulling Medium: #40 roller chain
15. Magnetic Limit Switches: Automatic setting with no mechanical switches to set, wear out or break.
16. Operating Switches: Built-in power (on-off), reset and operating switches.
17. Convenience Outlets: Two (2) 115 VAC for accessory transformers.
18. Entrapment Protection
 - a. Photo-electric eye (non-contact sensor).
19. Accessories: Provide the optional accessories listed below.
 - a. Fail-Secure Lock Kit – requires a key lock to open the gate upon primary (AC) power loss.
 - b. Plug-in loop detectors.
 - c. Photo-electric beams – reverses direction of gate if the light beam is obstructed.
 - d. Backup power inverter – allows system to remain operation upon loss of primary (AC) power.

2.3 *KEYPAD WITH FIRE DEPARTMENT OVERRIDE*

VEHICULAR SLIDE GATE OPERATOR 32 31 32 - 3

- A. *Contractor Furnished and Contractor Installed. Verify override requirements with Fire District.*

2.4 CARD READER

- A. *Owner Furnished and Owner Installed.*

PART 3 - EXECUTION

3.1 INSTALLATION

- A. It is preferred that this product be installed by a qualified technician who is certified by the Institute of Door Dealer Education and Accreditation (IDEA) as a Certified Automatic Gate Operator Installer (CAGOI).
- B. Model 9000 shall be mounted, firmly secured, plumb and level, as required.
- C. Wiring shall be uniform and in accordance with national electric codes and manufacturer's instructions.
- D. All splices shall be in easily accessible junction boxes or on terminal boards.
- E. All cable runs in all junction boxes shall be tagged and identified.
- F. Coordinate all work with other effected trades and contractors.

3.2 SYSTEM INITIALIZING AND PROGRAMMING

- A. System shall be turned on and adjustment made to meet requirements of specifications and on-site conditions.
- B. System shall function as specified.

3.3 SYSTEM TEST PROCEDURES

- A. System shall be completely tested to assure that all components and accessories are hooked-up and in working order.
- B. System shall be pre-tested by contractor and certified to function in accordance with plans and specifications.
- C. System shall be tested in presence of owner's representative.

3.4 OWNER INSTRUCTIONS

- A. Installation contractor shall conduct up to (1) hour of instruction in use and operation of the system to designated owner representatives, within (30) days of acceptance.
- B. Installation contractor shall conduct up to (1) hour of technical training, in troubleshooting and service of the system, to designated owner representatives within (90) days of system acceptance.

3.5 MANUALS AND DRAWINGS

VEHICULAR SLIDE GATE OPERATOR 32 31 32 - 4

- A. Contractor shall provide owner with (2) copies of standard factory prepared operation, installation and maintenance manuals. Manuals shall include typical wiring diagrams.
- B. Contractor shall provide owner with (2) copies of any risers, layouts, and special wiring diagrams showing any changes to standard drawings, if required on project.

3.6 MAINTENANCE

- A. The manufacturer recommends periodic maintenance at 1, 3 and 12 month intervals as described in the installation and maintenance manual.
- B. External reversing devices should be checked at least once a month.

END OF SECTION