

# Westridge Middle School

## Construction Report 07/15/2022

### This Week

June 11<sup>th</sup> – June 15<sup>th</sup>

- Continued hanging and finishing drywall in 2<sup>nd</sup> floor bathroom and office area
- Began framing and ceiling grid on 1<sup>st</sup> floor area
- Poured new sidewalk as well as slab in courtyard
- Poured concrete footing as part of the 2<sup>nd</sup> floor addition



Poured new sidewalk and slab in courtyard area

### Next Week

June 18<sup>th</sup> – June 22<sup>nd</sup>

- Continue MEP installation in 2<sup>nd</sup> floor bathroom
- Pour new slab in 2<sup>nd</sup> floor addition area
- Continue hanging and finishing drywall in 2<sup>nd</sup> floor conference room and offices



Poured footing in 2<sup>nd</sup> floor addition

# Westridge Middle School

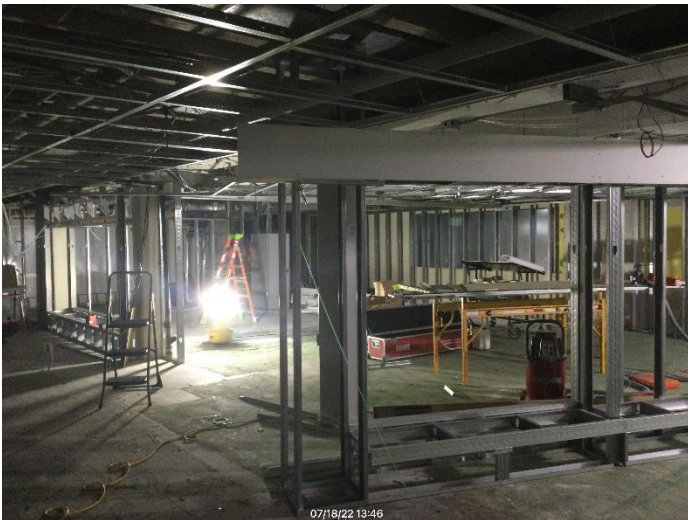
## Construction Report 07/15/2022



Finishing drywall and doorframe installation  
in 2<sup>nd</sup> floor offices



Continuing drywall installation in 2<sup>nd</sup> floor  
bathrooms



Continuing wall framing in 1<sup>st</sup> floor area



Installation of corridor ceiling grid in 1<sup>st</sup> floor  
area



# Westridge Middle School

## Construction Report 06/17/2022

### This Week

June 13<sup>th</sup> – June 17<sup>th</sup>

- Finished demolition in level 2 bathroom
- Finished demolition of level 1
- Finished demolition of level 2 offices and classrooms
- Began framing on level 2 bathroom and offices



Demolition of front entranceway

### Next Week

June 20<sup>th</sup> – June 25<sup>th</sup>

- Continue wall framing in all areas
- Begin overhead MEP on level 2
- Begin rough grading for level 2 addition and courtyard



Level 1 demolition

# Westridge Middle School

## Construction Report 06/17/2022



Level 1 wall framing



Framing of new office space



Grading in east courtyard



Demolition of old offices