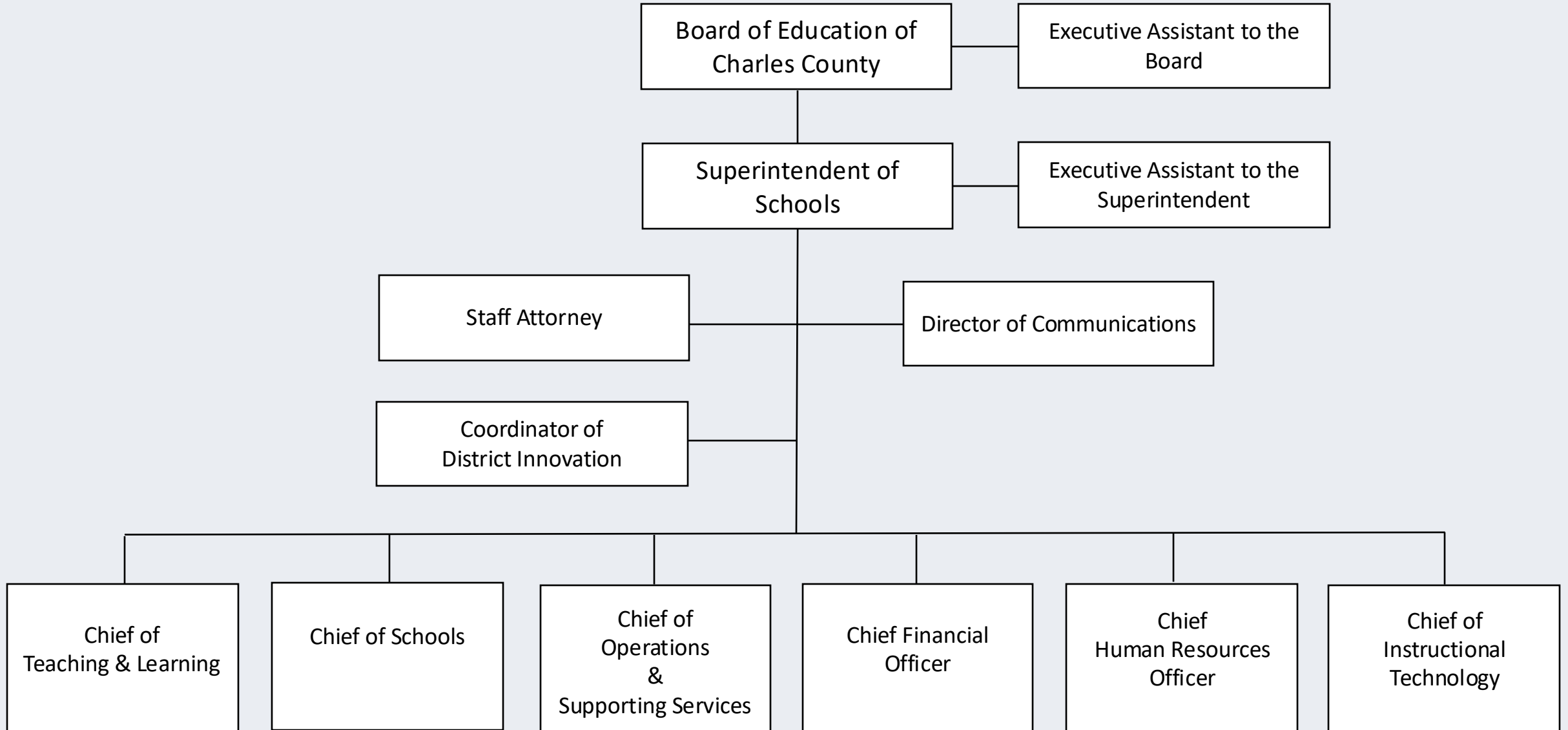


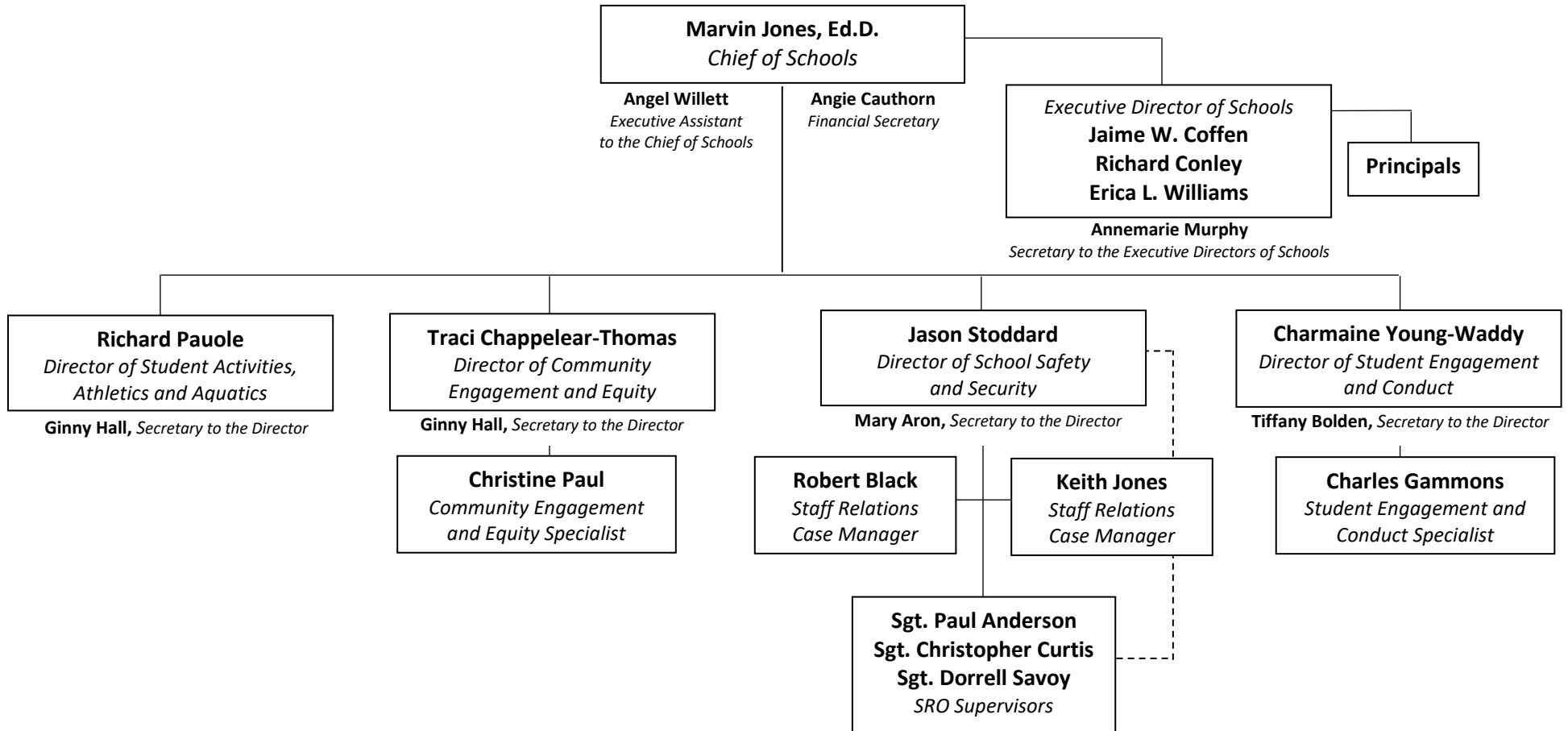


Charles County Public Schools Organizational Chart

SY 2024-2025



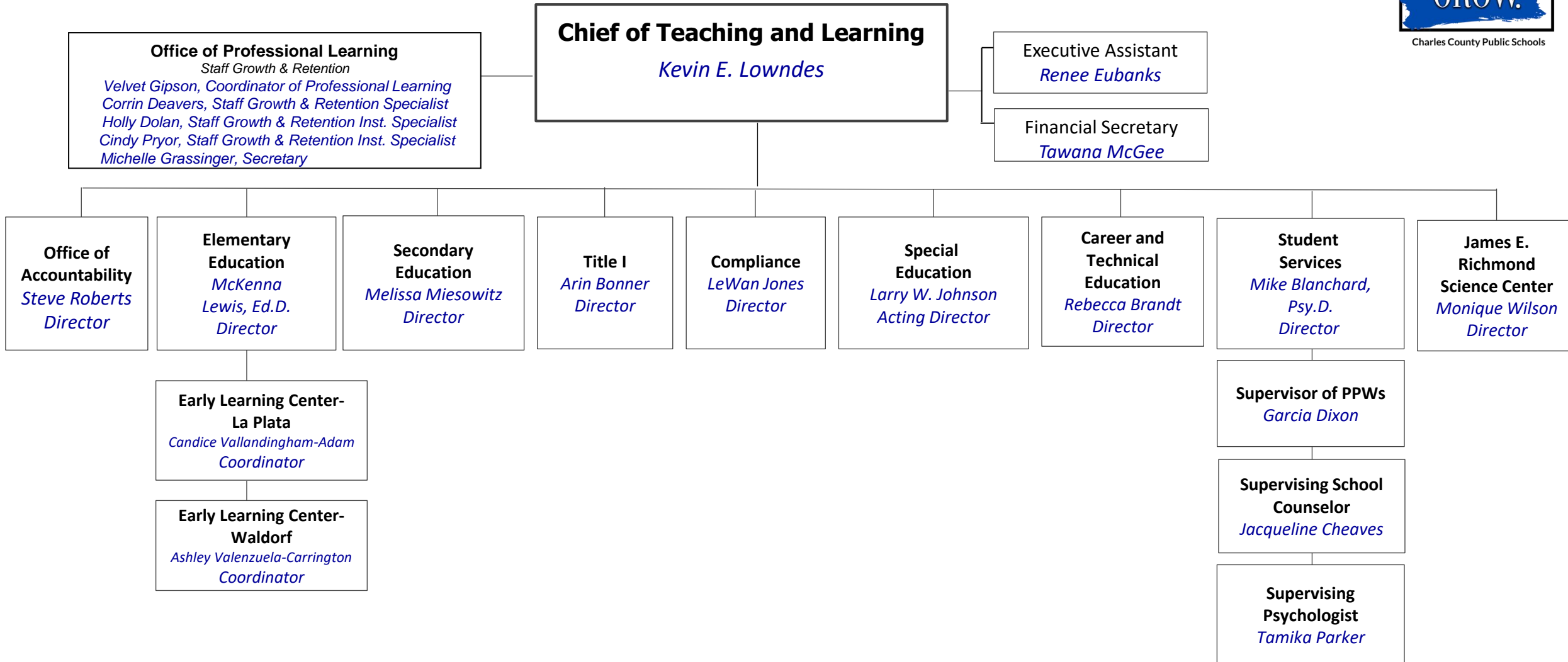
Office of School Administration and Leadership



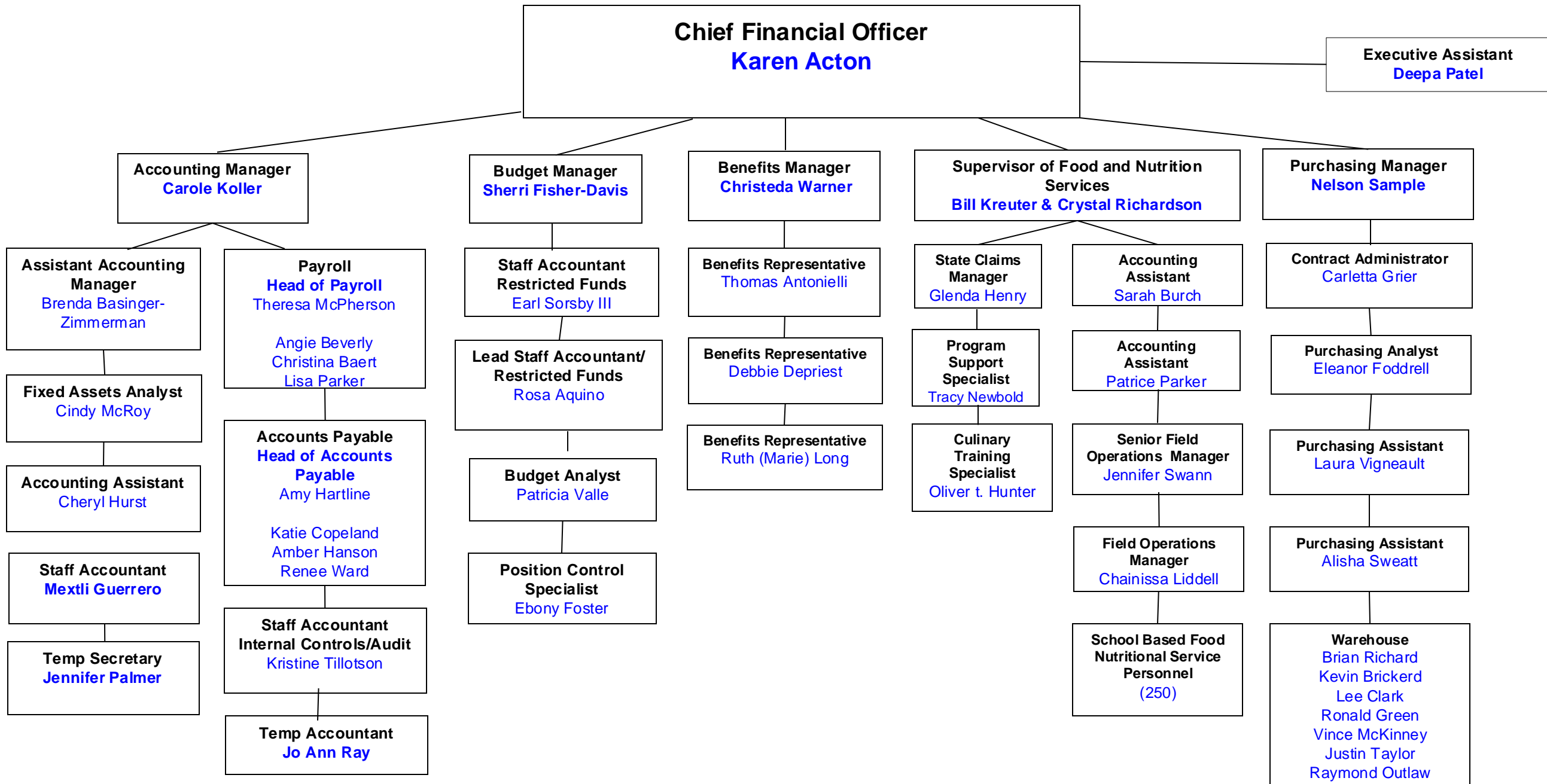
OFFICE OF TEACHING AND LEARNING



Charles County Public Schools



OFFICE OF FISCAL SERVICES ORGANIZATIONAL CHART



OFFICE OF HUMAN RESOURCES ORGANIZATIONAL CHART

NIKIAL MAJORS
CHIEF HUMAN RESOURCES OFFICER

DIANA COLOMO
Executive Assistant

David Shimizu
HRIS & Compensation Manager

Shirlene Ogburn
Supervisor of Employee Services

Kevin Howard
Supervisor Human Resources

Teresa Absalon
Tracie Mattera
Linda Henderson
Nylisha Jennings-Hall
HR Assistant

Louise Evans
Michelle Ezzell
HR Assistant

Jeremy Campbell
Specialist

Charvonne Hill
Specialist

Mieya Crosby
Specialist

Sarah Fortune
Specialist

Barbara Simmons
Jill Rechord-Monegain
CAP

Tanya Williams
Generalist

Kyra Ransome
HR Assistant

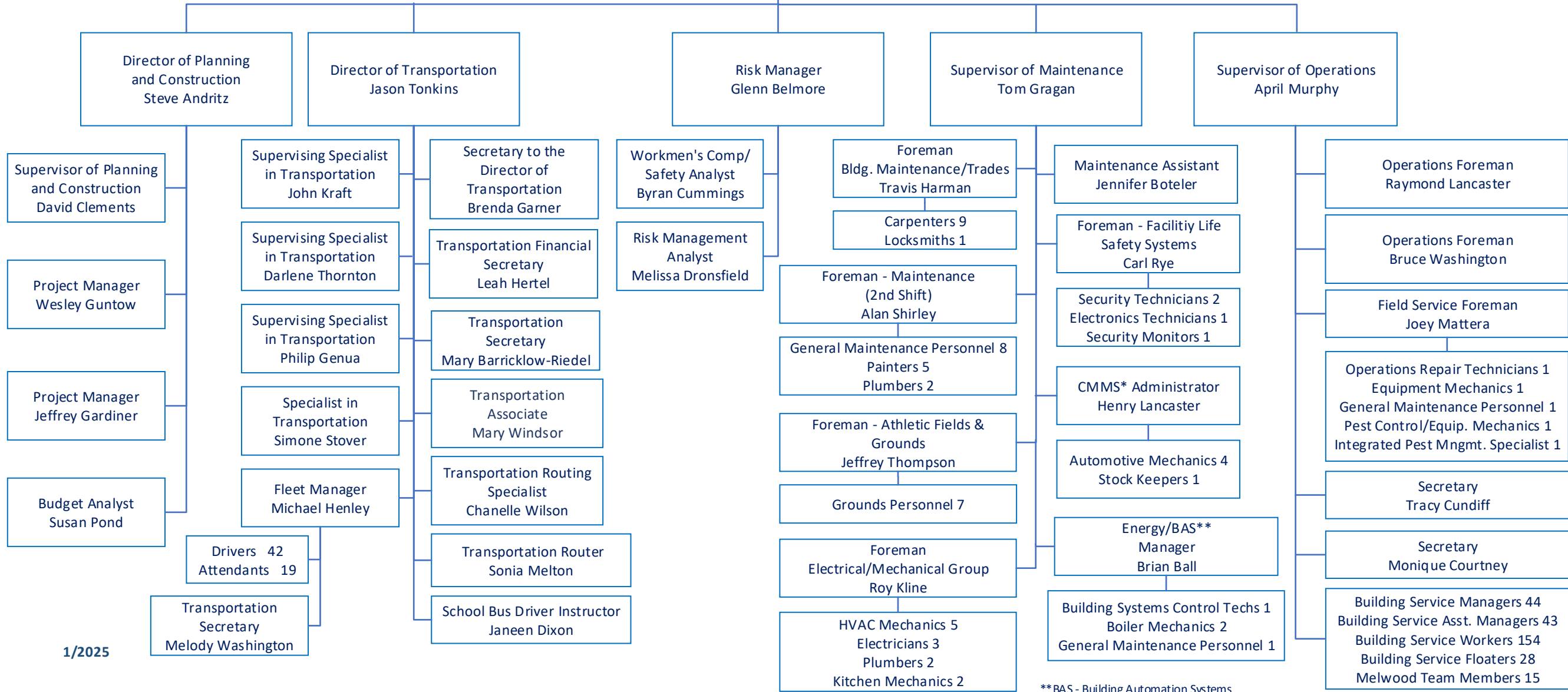
LaTasha Hall
Generalist

Lacen Dement
HR Assistant

Christi Kober
CAPA

Angela Rogers
Cert. Assistant

Charles County Public Schools - Operations & Supporting Services



1/2025

**BAS - Building Automation Systems
*CMMS - Computerized Maintenance Management System



Charles County Public Schools

Office of Technology

Organizational Chart

