

# AGREEMENT FOR CONSTRUCTION SERVICES (SMALL PROJECTS)

## EXHIBIT A - SCOPE OF WORK

### PROJECT BACKGROUND AND DESCRIPTION STATEMENT

Install new monument footings at five(5) school sites; install district provided new signs; demolish existing signs/footings once new sign is functional.

### TASK LIST

Each task has been assigned a number for reference throughout the rest of this document and during the commission of the project. Contract shall perform the Work at:

ADELANTE II (1970 Cinderella Ln., San Jose, CA 95116)  
RENAISSANCE AT FISCHER (1720 Hopkins Ln., San Jose, CA 95122)  
RENAISSANCE AT MATHSON (2050 Kammerer Dr., San Jose, CA 95116)  
OCALA STEAM ACADEMY (2800 Ocala Ave., San Jose, CA 95148)  
CESAR CHAVEZ ELEMENTARY (2000 Kammerer Dr., San Jose, CA 95116)

#### **All sites**      Scope Description

Install new footings adjacent to existing signs using district provided anchor bolt kits; extend existing 120VAC circuit and data line; install new in-ground electrical access box (where one is not present); install district provided signs; demolish old sign and footing once new sign is functional; fill the area as required and compact.

#### **Task 1**      ADELANTE II

Perform work as described in Scope description above

#### **Task 2**      RENAISSANCE AT FISCHER

Perform work as described in Scope description above

#### **Task 3**      RENAISSANCE AT MATHSON

Perform work as described in Scope description above

#### **Task 4**      OCALA STEAM ACADEMY

Perform work as described in Scope description above

#### **Task 5**      CESAR CHAVEZ ELEMENTARY

Perform work as described in Scope description above

## **AGREEMENT FOR CONSTRUCTION SERVICES (SMALL PROJECTS)**

### **EXHIBIT B – SEQUENCE OF CONSTRUCTION**

#### **PROJECT BACKGROUND AND DESCRIPTION STATEMENT**

Install new monument footings at five(5) school sites; install district provided new signs; demolish existing signs/footings once new sign is functional.

#### **SEQUENCE:**

The district has requested the work be phased to provide for consistent signage at each of the sites:

**Phase 1**      Install Footings (may proceed immediately)

Install new monument sign footings; fabricate baseplates; install new in-ground boxes where required; extend existing 120VAC circuit to new footing

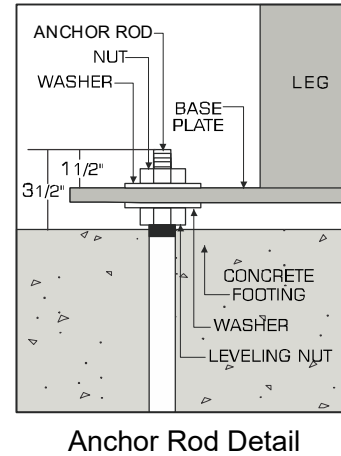
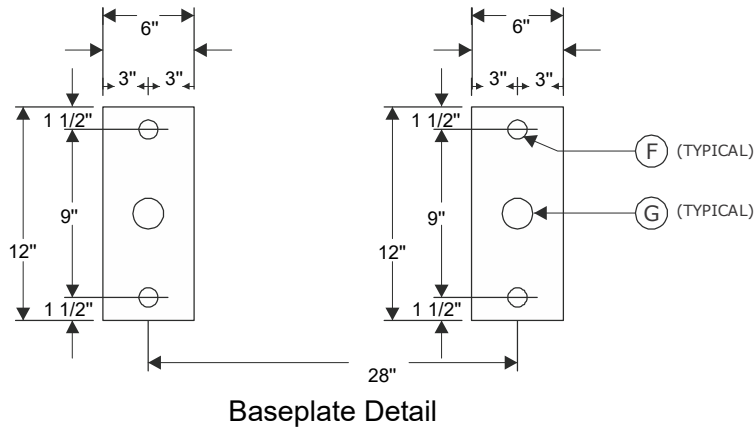
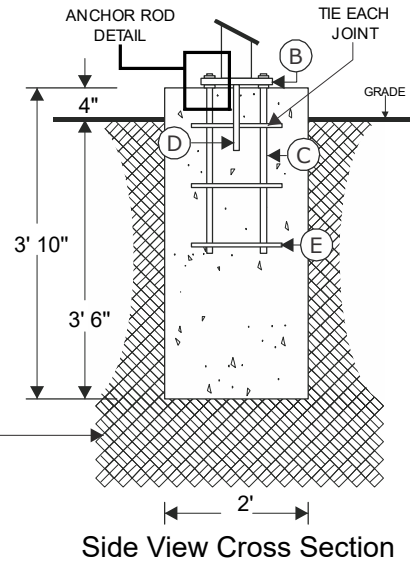
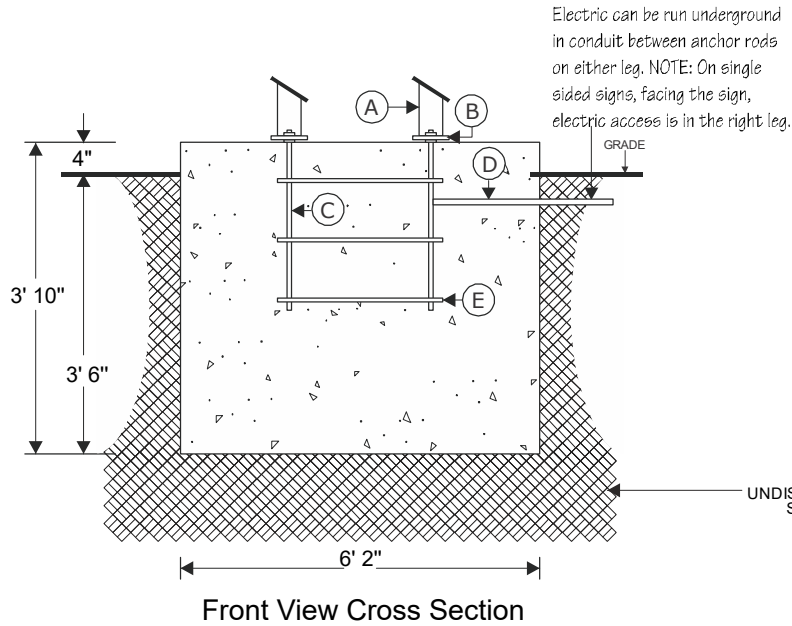
**Phase 2**      Install New Signs/Demo Old Sign (once new signs are received)

Install new monument sign and connect power; remove old sign from existing footing

**Phase 3**      Demolish Old Footing (may proceed once new sign is installed/active)

Demolish old footing; backfill and compact soil

# FOOTING SPECIFICATIONS

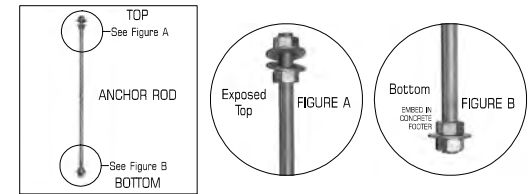


## FOOTER DETAIL

- A. Sign legs
- B. Base plates
- C. 3/4" x 30" anchor rods, 4 required. Tape anchor rod threads for protection against sand.
- D. Electrical conduit (supplied by customer)
- E. #5 rebar or better, tied at each joint (supplied by customer)
- F. 1 1/4" diameter anchor bolt holes
- G. 2" diameter electrical hole

## NOTES

- 3,000 psi concrete: less than 1.75 cubic yards needed
- Windload: design meets or exceeds 120 mph Exposure B



## CONTACT

Shay Einhaus  
1-888-237-3928, x2310  
seinhaus@stewartsigns.com

## CUSTOMER INFORMATION

CESAR CHAVEZ ELEMENTARY  
SCHOOL  
2000 KAMMERER AVE  
SAN JOSE, CA - MID-NORTH 95116  
3016  
Customer #1240513  
Order #986419-1

## SIGN SPECIFICATIONS

Sign Model: TekStar (T)  
ID Cabinet Size: 4' x 8'  
Leg Height: 3' 6"  
Leg Width: 2' 8"  
Windload: 120 mph Exposure B  
On Center Dimension: 28"

Drawing Generated 5/25/2022 8:52 AM

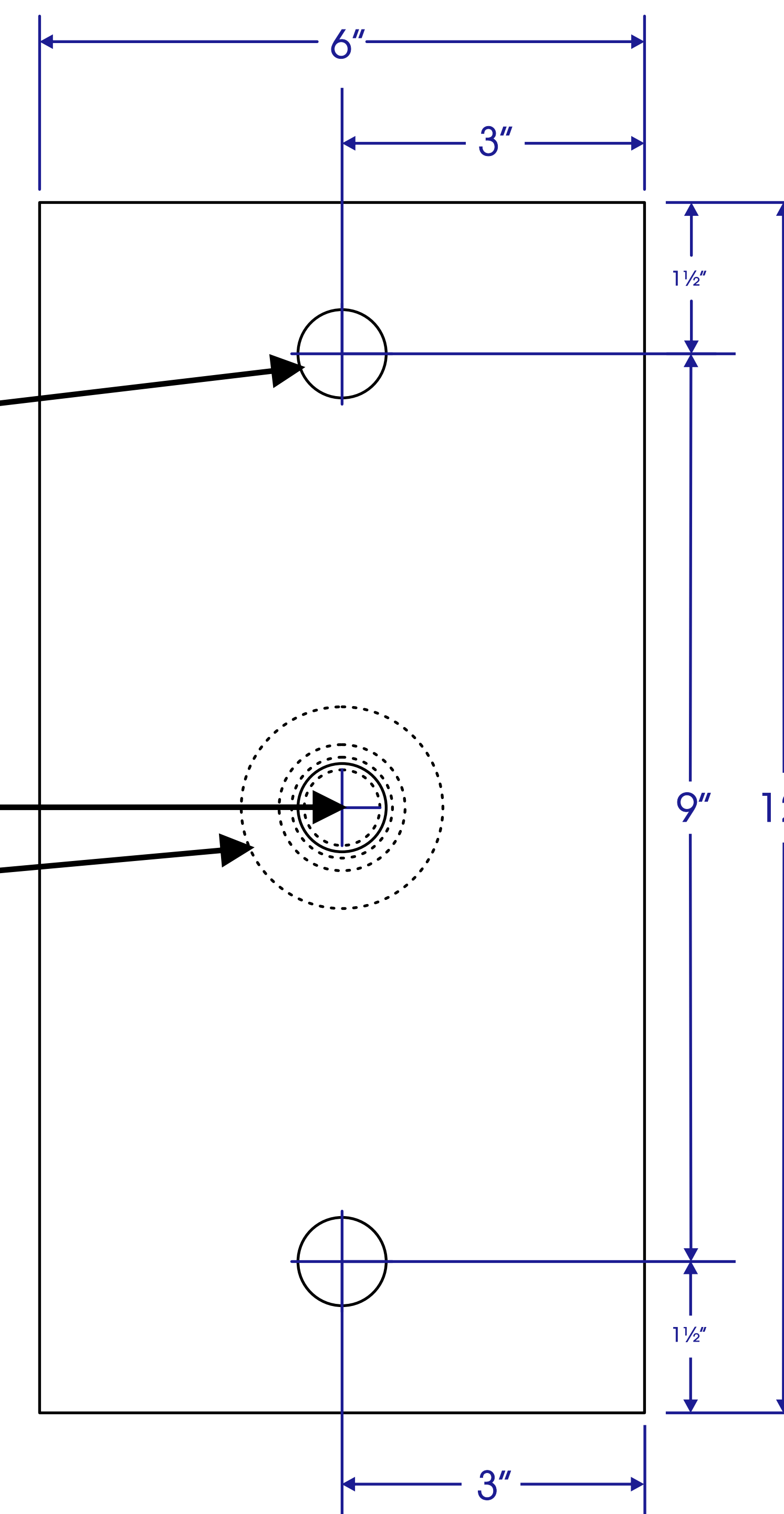
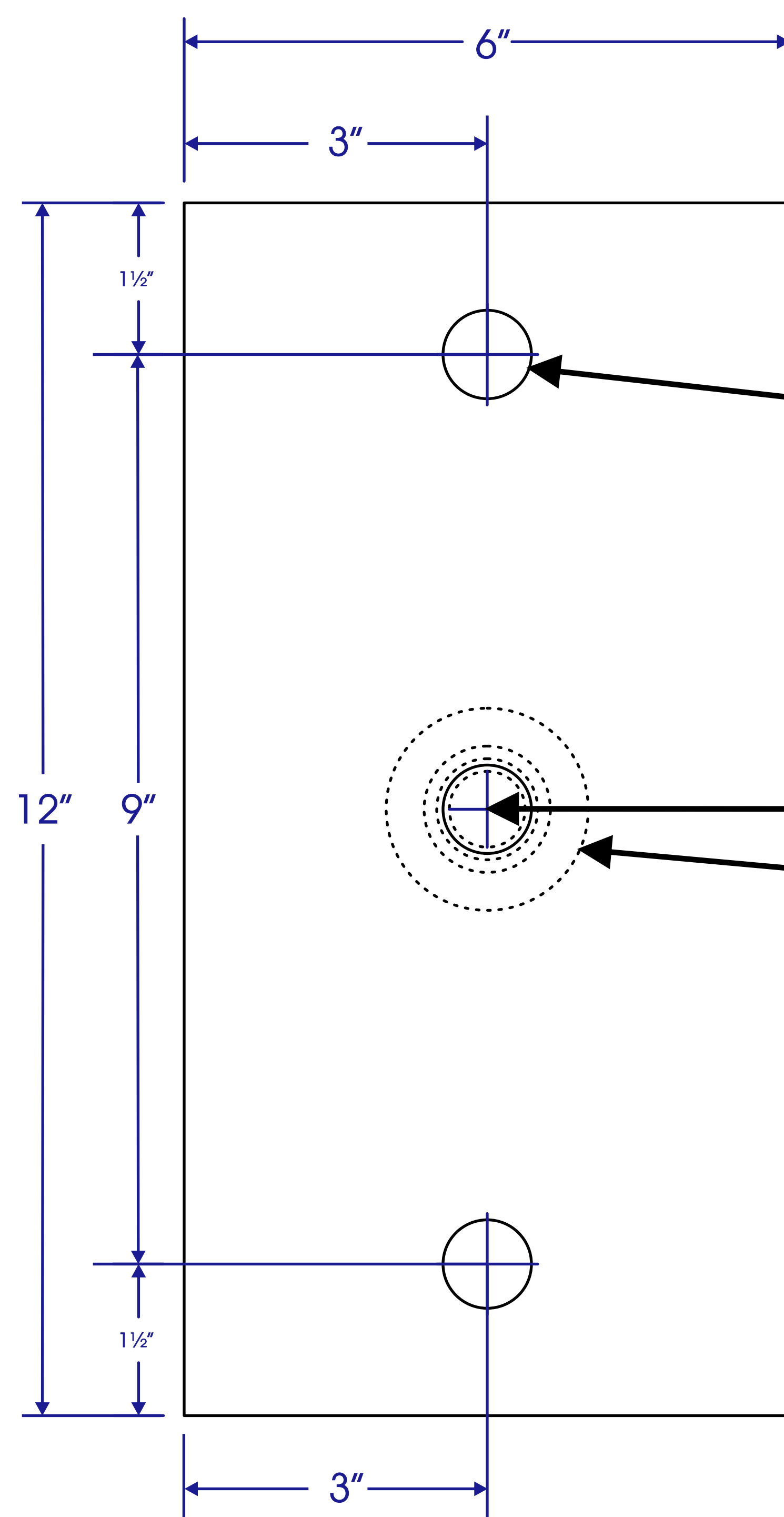
**SEPARATE STEWART TEMPLATE MUST BE USED TO SET ANCHOR RODS INTO CONCRETE**

**DRAWING IS NOT TO SCALE**

2201 Cantu Ct. Suite 215 Sarasota, FL 34232  
1-800-237-3928 www.stewartsigns.com

Page 1 of 1

# SERIES #: VFT-6x12-28



DRILL HOLES TO MATCH ANCHOR ROD DIAMETER

## 28"

ONE HOLE FOR DATA/PHONE CABLE CONDUIT AND  
AND  
ONE HOLE FOR ELECTRICAL CONDUIT  
(ON SINGLE SIDED SIGNS THE ELECTRIC IS IN THE RIGHT LEG WHEN FACING THE SIGN)

HOLE SIZE IS DETERMINED BY SIZE OF CONDUIT BEING USED. ADD 1/8" TO CONDUIT DIAMETER.  
EXAMPLE: (3/4" CONDUIT REQUIRES A 7/8" HOLE)


3" HOLES FOR ELECTRICAL AND DATA OUTLETS

PLEASE REVIEW THE JMS INSTALLATION INSTRUCTIONAL VIDEO AT [stewartsigns.com](http://stewartsigns.com)  
CLICK ON "CUSTOMER SUPPORT" AND FIND UNDER "INSTALLATION".

#### INSTRUCTIONS FOR USE:

This template is to be used to establish the precise location and spacing of the anchor rods, electrical conduit and data/phone cable conduit.

1. Prepare the foundation following the enclosed footer drawing. Local frost line requirements may supercede the indicated footer depth dimensions.
2. Create a wooden template by placing this paper template onto 3/4" plywood. Mark and drill holes at each of the anchor rod locations, one hole for the electrical conduit and one hole for the data/phone cable conduit.
3. Mount anchor rods to wooden template and tape the exposed threads for protection against concrete.
4. If you have questions, please call our toll-free number, 1-800-237-3928, and ask for our Customer Support Department.

 <small>PH: 1-800-237-3928 FAX: 1-800-485-4280</small>	DRAWN BY: CaW
	DATE: 2014
VFT-6x12-28	

**THIS STEWART SIGNS TEMPLATE MUST BE USED TO SET ANCHOR RODS INTO CONCRETE**

## 3 Part Specifications



1-800-237-3928  
[www.stewartsigns.com](http://www.stewartsigns.com)

**TekStar Full Color, 10mm LED Electronic Message Center  
With SignCommand.com Cloud-Based Interface**

**I. ACCEPTABLE MANUFACTURER**

- a. Products of the following manufacturer or comparable, provided they comply with the following specifications and are considered functionally and physically similar/acceptable:
- b. TekStar
  - i. Integrated LED Display Cabinets and Identification Cabinet with Support Structure
  - ii. By: Stewart Signs
    - 1. 2201 Cantu Court, Sarasota, FL., 34232

**II. QUALITY STANDARDS**

- a. Signage and work under this section shall be manufactured by vendors dealing extensively in this type of work and capable in producing first quality work
- b. Signage provider shall have at least ten (10) years of experience providing LED products and services for other organizations
- c. All work and installation shall be in accordance with the requirements of these specifications and manufacturer's recommendations. In the event of disagreement between these specifications and the manufacturer's recommendations, these specifications shall govern.
- d. Entire unit, including the assembled product to include UL listing (NOT ETL only)
- e. Made in the USA from domestic and foreign parts in one plant, Alabama

**III. GENERAL SIGN CONSTRUCTION**

- a. Entire sign shall be manufactured by one manufacturer to include
  - i. Thermoformed Identification Sign Face (Tuffak XL matte finish)
  - ii. External Extruded Aluminum Cabinet
  - iii. Internal LED Display Cabinet
- b. Signage is to be an integration of 4 major components
  - i. External Identification Cabinet
    - 1. Cabinet Dimensions
      - a. Outer Cabinet (1)
        - i. 4'x8'
      - b. Inner LED Cabinet (2)
        - i. 2'4"x7'7"
    - 2. Cabinets constructed using 12" deep aluminum extrusions
      - a. Extrusion Thickness – 0.156"
      - b. Double reinforced corners, internally welded
    - 3. Hinged Sign Face(s)
      - a. Allows access to internal lamps and ballast(s) without removing face(s)
      - b. Concealed extruded aluminum hinges
      - c. Cover supported with integrated props when open
    - 4. DuPont TGIC Powder Coat Finish
    - 5. Internally Illuminated
      - a. LED tube lamping (110 volts – 277 volts)
- c. Tuffak XL Sign Faces – Matte Finish
  - i. Entire Cabinet containing ID area & LED display is enclosed with Thermoformed, Tuffak XL polycarbonate sign face (UV / graffiti / vandal resistant)
  - ii. Face decorated with second surface (inside), 3M High Performance Translucent vinyl for all name / logo graphics
- d. Integrated internal LED Display Cabinets (proprietary design)
- e. LED display cabinet is mounted inside the External Identification Cabinet, behind the Tuffak XL Sign Faces for protection against UV/graffiti/vandalism damage
  - 1. Double-sided LED displays will have two internal LED Display Cabinets inside.
  - ii. LED Display Cabinets constructed using aluminum extrusions (not sheet metal wraps)

- iii. LED Cabinets are weather resistant & placed inside the External Identification Cabinet for additional protection from the elements and a cleaner finished look.
  - 1. Hinged cover allows access to internal electronic components without requiring the removal of LED modules
- f. Forced Air Ventilation (heating and cooling protection)
  - i. Ventilation Fans are installed in both the Internal LED Display Cabinets and in the External Identification Cabinet.
  - ii. LED cabinets shall have forced air ventilation

#### IV. LED Display

- a. Pixel Pitch: 10mm
- b. LED Pixel Matrix: 64x224
- c. Three (3) LEDs per Pixel: 1 red, 1 blue and 1 green
- d. LED Boards are mounted to a hinged front to allow opening Internal LED Cabinet to allow servicing internal electronic components without the need to remove the LED boards
- e. NIT Rating shall be variable, up to 10,000
- f. LED boards to be 16 pixels high by 16 pixels wide
- g. The LED display can display the following:
  - i. Text sizes range from 2.8" – total height of display
  - ii. Capable of displaying graphics, video clips and animations
  - iii. Capable of displaying up to 281 quintillion colors
  - iv. Up to 60 frames per second video clips, animations and transitions
  - v. 1,200 Hertz refresh rate
  - vi. 32 Gigabyte Solid State Hard Drive
- h. Brightness controlled either automatically via a light sensor or manually through use of the controlling operating platform.
- i. Web-based temperature control via weather.com or customer chosen site.
- j. 120V/20A power requirements (see quote for specifics)
- k. Exhaust fans run 24/7 to prevent moisture build-up inside the displays.

#### V. System Requirements

- a. Sign to be operated using ANY internet connected device. Not restricted by any machine. Preference is to interface through a modern browser (Firefox, Chrome....)
- b. Ability to overlay text on top of graphics or video clips
- c. Ability to provide a count-down to a specific event in days, hours, minutes or seconds
- d. Ability to preview message before transmitting to display.

#### VI. Software: [www.SignCommand.com](http://www.SignCommand.com) cloud-based programming.

- a. [www.SignCommand.com](http://www.SignCommand.com) is the interface site.
- b. Secured using Amazon Web Service hosting
- c. 2 factor authentication
- d. Use from anywhere in the world with internet access on any modern browser
- e. Intuitive, simple interface
- f. **NOTHING TO DOWNLOAD**
- g. Remote diagnostics
- h. No monthly fees ever.

#### VII. Power Supplies

- a. Power supply circuitry to be conformal coated
- b. Support a Voltage Range of: 88 ~ 264VAC
- c. Overload protection: 105 ~ 135% of rated power
- d. Input Efficiency: 80%
- e. Over Temperature Protection: Auto shut-down of voltage and recovers automatically when temperature goes down.
- f. Working Temperature: -40 degrees up to 176 degrees Fahrenheit

**VIII. Data Communication Options**

- a. LED display shall be compatible with the following options.
  - i. Lifetime Verizon LTE Cellular (no monthly bills ever)

**IX. SPECIFIED PRODUCT WARRANTY**

- a. Lifetime warranty against workmanship and defects on sign faces and cabinets
- b. Lifetime warranty on the Tuffak XL sign faces due to breakage by vandalism, except for gunshots
- c. 5 Year warranty on the LED display and internal components
- d. 5-year warranty on CELLULAR MODEL (1 YEAR ON ALL OTHERS)
- e. 5-year warranty on LED lamping
- f. Provide written warranty for complete details. (last 2 pages of each quote provided include warranty)

**X. SOFTWARE TRAINING**

- a. Provide online, self-guided video tutorials at no cost as well for life.

**XI. SUBMITTALS**

- a. Manufacturer will provide online links to software, programming / user manuals and maintenance procedures.