

Annual Report Enclosed



CROWN & SHIELD

Fall 2011

Exploring Cultures, Understanding Others

Benilde-St. Margaret's

CROWN & SHIELD

Benilde-St. Margaret's

A Catholic Co-educational School, Grades 7-12

2501 Highway 100 South, St. Louis Park, MN 55416
952-927-4176

President Bob Tift, Ed.D. '71

Senior High Principal Sue Skinner, Ed.D.

Junior High Principal Carol McNamara, D.M.A.

Chair, Board of Directors Rodney Jordan

Crown & Shield Managing Editor

Melenie Soucheray, msoucheray@BSMschool.org

Writer/Copy Editor

Caren Hansen, chansen@BSMschool.org

Alumni News and Alumni Album

Mary Fran O'Keefe, mfokeefe@BSMschool.org



The BSM crest:

Veritas-truth; Pietas-holiness, dutiful conduct;
Scientia-knowledge; Crown-St. Margaret's;
Knight-Benilde; three Benedictine Crosses

The *Crown & Shield* is published by the Benilde-St. Margaret's (BSM) marketing & communication department for graduates, students, families and friends of BSM. Please submit story ideas and alumni news to marcomm@BSMschool.org.

Delivery Notice

As part of our continuing efforts to reduce waste, we have limited the delivery of *Crown & Shield* to one per household. If you hear that we have inadvertently left someone off the list, please contact us.

Send Us Your Ideas

In an upcoming issue of the *Crown & Shield* we will feature people who exhibit the Spirit of BSM. Let us know about the many ways that spirit manifests itself through giving to BSM, action inside and outside the classroom, and the commitment to living our Mission and Vision in the spirit of BSM. Send story ideas and photos (at least 1 mb in size) to marcomm@BSMschool.org.

Connect with the BSM community on Facebook and Twitter.



Features

New Faculty and Staff	9
Exploring Cultures, Understanding Others	10
2010-2011 Annual Report	23
Hall of Honor	40

Departments

BSM Buzz	4
Advancement	6
Catholic ID	7
Inside/Outside the Classroom	8
Alumni News	12
In Memoriam	16
Bulletin Board	17
Alumni Album	18
Red Knights in the News	21

on the cover

Cast members from *Fiddler on the Roof*: left front-Gavin McLain, right front-Edward Meeker; back row (l-r)-Afua Paintsil, James Copland, David Nelson, Rachel Hogan, Benjamin Zeman, Anna Landis, Leila Aboussir, Jaqueline Theisen.



PRESIDENT'S LETTER

“Rejoice in the Lord always.
I shall say it again: rejoice!”

(Excerpted from Paul's Letter to the Philippians 4:4-9)



In anticipation of the scriptural theme for the new school year – Joy, BSM faculty and staff were asked to take note of the joy they experienced during the summer months. There were picnics, camping, fireflies, and watching a toddler figure out how to make a straw work in a Slushee. Some sent elders to meet the Lord. Others introduced infants to the world. There was sleeping in, weeding the garden and planting new trees. A few traveled far away and many stayed close to home. It was a good summer.

By the end of June, with your help, we met our Annual Fund goal. On September 16, we dubbed the new fields the McQuinn Athletic Complex in honor of Al and Mary Agnes McQuinn. And we celebrated everyone who helped make the Raise the Red Campaign such a success. We enrolled hundreds of new Red Knights to bring our student body to near capacity, again. On October 3, in Washington, D.C., Warren and Mary Lynn Staley were honored for their support of BSM and Catholic education. Throughout the summer, several classes of alumni, including mine, returned to their alma mater to salute the separate and combined legacies of St. Margaret's Academy, Benilde and BSM. Thank you.

This year in *Crown & Shield*, we'll explore issues of diversity and our connections with people inside and outside of the BSM community. We'll explore myriad experiences that help bring us together as a community, understand our global society, and respect and protect each individual among us.

Just as we are urged by St. Paul, we will think about what is true, honorable, just, pure, lovely, gracious, excellent and praiseworthy in ourselves and others. Paul reminds us it won't always be easy; but, if we succeed, we will find Joy. It will be a good year.

Sincerely,

A handwritten signature in black ink that reads "Bob Tift". The signature is stylized and cursive.

Bob Tift '71
President

Sauer is Seton Scholar



The National Catholic Education Association (NCEA) has named BSM Senior Nicole Sauer a 2011 Seton Scholar. The criteria for awarding the \$1,000 scholarship included Nicole's academic achievement and community service. The gift was given on October 3 in Washington, D.C.

Nicole is a straight A student who has taken, and continues to take the most rigorous courses offered at BSM. She is involved in many extracurricular activities. She is the founder of our Classics Club, and served as its first president during her sophomore year. As a senior, Nicole is the president of our National Honor Society, captain of the track team, captain of our cross country team and plays first violin in the BSM orchestra. Nicole is also a member of our Advanced Competitive Science group (rescue robots) and plans to be on the team that will compete internationally in the summer of 2012. She is considering several colleges for next year, including Stanford, Northwestern, University of Illinois and the University of Minnesota. She will study engineering and aspires to be a career scientist.

Grandparents' Day

Hundreds of Benilde-St. Margaret's grandparents, some of whom are alumni/ae of St. Margaret's Academy, Benilde High School and BSM, were celebrated as integral members of our community on Grandparents' Day, October 7. During Mass in the Habon Center and a continental breakfast, students, parents, faculty and staff honored the grandparents for their unflinching support, wisdom and commitment to their grandchildren and BSM.

Fill 'em up at the hydration station

There's a new way to top the tank at BSM. A hydration station dispensing fresh, flavored, free water for students, faculty and staff is open to all. According to students, "It is one of the best things to happen here."

Situated near the vending machines in the cafeteria, a small counter supports two jugs of water and paper cups for everyone to get drinks throughout the school day.

Lynn Lynch, BSM's cafeteria manager for Taher, BSM's food service company, says that not only does a hydration station align with BSM's new Wellness Program initiatives, it's economical and green. Ms. Lynch notes that Taher is selling 50-60 fewer drinks (water, juices, etc.) each day since the introduction of the hydration station. By not buying bottled water, students save money and reduce waste.

Tap water is chilled, before it's poured into the dispensers. Taher is experimenting with flavors. The fresh strawberries bobbing in the water are a big hit.

Senior Paul Kretsch says the hydration station is an easier, faster way to refill cups and bottles. "It stays colder than the water fountain," he said. "I drink more water during lunch, too." Senior Ben Rosengren says, "I go out of my way to come here."



Betty Rosenow's golden anniversary

If you graduated from Benilde High School in the early '60s, you might be considering retirement right about now. Not Betty Rosenow. She's been going strong for 50 years and has no plans to end her service to the BSM community.

Ms. Rosenow began working in the cafeteria of Benilde High School in 1961. She helped keep the boys in line back then; and, she has been a staple through the merger of the girls' and boys' schools. Stop in and ask her to recite names of BSM graduates who return to visit.



She is still busy serving up pizza and keeping the salad bar stocked throughout the lunches. Ms. Rosenow enjoys her three days per week at BSM. "It gets me out of the house."

And Ms. Rosenow is not alone at the top. Doris Christensen, who works in the maintenance department, is celebrating 48 years with the school. Doris and Betty almost always take their morning break together. Six other employees have been Red Knights for at least 30 years: Steve Kahn (30), Dianne Numelin (30), Mary Fran O'Keefe (34), Sue Cipolle (35), Jim Wander (35), and Mike Jeremiah (36).

Biology students investigate "murder"

An alleged crime took place at BSM on September 15 – well, at least, according to 10th grade biology curriculum.



Students arrived in their classroom to find Ambu Man (one of the school's CPR mannequins) on the floor in a corner behind yellow crime scene tape. He was reportedly the victim of a drowning incident. An "autopsy" had already been performed and a sample of fluid from his lungs was a clue to the identity of the suspected "killer."

Students were instructed to view slides of this fluid and match it to theoretical samples taken from three other nearby water sources: Minnehaha Creek, Twin Lakes Park and BSM Wetlands. If a match was made, the sophomore sleuths could conclude where Ambu Man drowned.

Each of the three biology teachers were said to live very close to one of the water sources, and were thus suspects in the fictitious crime. Was it Mr. Lyons, Mr. Porisch or Ms. Rouschar? See the September 20 posting on the BSM Facebook page www.facebook.com/BenildeStMargarets, for the answer.

Japanese students visit BSM

BSM welcomed 47 Japanese students from our sister school, Kaisei Gakuin School in northern Japan, on September 22. This is the third consecutive year that students from Japan have visited us.

The Japanese students spent most of the day shadowing BSM students and experiencing Red Knight classroom life. Hosts and guests also attended a tree planting ceremony in the front of the building.

The Japanese students presented us with a blossoming tree, which is more suitable to the Minnesota climate and similar to a Japanese cherry blossom tree. In Japanese culture, the cherry tree and its blossoms are symbolic of life and good luck. The group from Japan donated this tree to BSM in gratitude for the support BSM has shown. Last spring, BSM students, faculty and staff donated over \$1,700 to Catholic Relief Services to help with the disaster in Japan.

The Japanese group stayed with BSM host families while here. Along with their time at BSM, the students hosted an event for all BSM students and their host families and took part in other Twin Cities activities.

Makoto Noda, a student from Kaisei Gakuin, is an international student at BSM for this school year, studying as a junior.



Homecoming Common Basket holds smiles

The traditional Common Basket collection at the beginning of this year's Homecoming liturgy will bring beautiful smiles to the faces of several children in need. Thanks to the BSM community, \$3,350 has been donated to Smile Network International, a Minneapolis-based, non-profit organization that provides impoverished children in developing countries with free cleft lip and/or palate surgery.

Want to know where someone is now?

Let us know which former faculty or staff person you want to catch up with. Send e-mail to marcomm@BSMschool.org and share a name and your memories of that person. We'll feature his/her story in an upcoming issue of *Crown & Shield*.

BSM sophomore Caroline Kupchella brought the Smile Network to our attention after she was introduced to the organization through a family friend. Then, last summer, Caroline and her dad, Rick, traveled to Kenya on a mission trip with Smile Network. They saw first-hand the impact on children's lives when their cleft lips, cleft palates and other conditions are repaired surgically. The organization also helps fix damage from burns, tumors or other genetic defects.

Learn more about Smile Network International at www.SmileNetwork.org.

BSM on Facebook and Twitter

Stay on top of all of the latest BSM buzz. Check out our Facebook pages. Go online to www.BSMschool.org and click on the Facebook and Twitter icons on the home page. Then, "like" and "follow" us! Alumni, you can also get targeted messages from our Alumni Facebook page by clicking the Facebook icon on our alumni home page at www.BSMschool.org/alumni. Be sure to "like" this page too.



Celebrating accomplishments, looking forward

The Raise the Red Campaign closed on June 30. After four years, we celebrate the success of raising \$14-million, the most gifts and dollars our school has received in our 104-year history. Benilde-St. Margaret's School could not have achieved this historic outcome without the leadership of Mary and Jim Jetland and their terrific campaign committee.

When the Raise the Red Campaign was being developed, the original goal was \$31 million. That's a bold goal in the best of times, one that the BSM community and board of directors were confident in setting. Leadership couldn't know then that an economic tsunami would hit in 2007 and bring about years of uncertainty. Many institutions struggled to meet operating budgets. BSM did not and continued its campaign. To paraphrase the Rev. Jesse Jackson: If you start a campaign, you might not achieve the goal. If you don't start a campaign, you're guaranteed not to achieve the goal.

Despite the slow economic recovery that stood in the way of achieving our initial goal, we are celebrating success with the new McQuinn Athletic Complex dedicated in honor of Al and Mary Agnes McQuinn, an increase in Annual Fund donors, and additional endowment funds. And, we're looking forward.

Over the next two years, Bob Tift will be bringing together leaders from across our community, including parents, alumni, and friends. He will be asking for information and guidance on how BSM, with your help, can continue to achieve its mission of developing our future leader's highest potential in mind, body and spirit. Be on the lookout for an invitation and plan on attending one of the "Conversations with the President" events.

There is no Catholic school in this area that has achieved more or has more promise than Benilde-St. Margaret's. We have accomplished much, but there is yet much to do. Thank you for your past support and what you will do in the future for BSM.



The McQuinn family: back row (l-r) – Mary Grace Arndt '13, Doug Arndt, Susan McQuinn Arndt, Mary McQuinn Jetland, Al McQuinn, Merriam McQuinn, Mary Agnes McQuinn, Jim Jetland, Katie Jetland Trevena '03, Nick Trevena, Anne McQuinn, the late Charles McQuinn; front row (l-r) – Brian Arndt '15, Joe Jetland '09

It's the Annual Fund

As the Raise the Red Campaign ends, so does the name FirstFund. The Annual Fund remains a crucial tool for faculty development, technology enhancement, tuition assistance and other vital needs.

Our fiscal year ended with a 15 percent increase in giving over last year. We raised \$776,940. We also saw an increase in the number of donors. This is very positive news. We appreciate your contributions to the Annual Fund. There are 1,187 students who benefit from your generosity on a daily basis. Thank you in advance for your continued support. The Spirit of BSM relies on you.

CATHOLIC IDENTITY

Our mission as a Catholic school



The first sentence of the BSM Mission statement puts our Catholic identity front and center in everything we do.

Every day, we foster a personal relationship with God, shaped by and expressed in prayer and worship. We provide a caring environment for everyone in our

community. Catholic teaching informs our curriculum. We promote ethical behavior marked by service and a search for justice. BSM is shaped by the charisms of the three founding religious traditions: the Sisters of St. Joseph, the Christian Brothers, and the Benedictines.

A “charism” is a unique character and mission offered for the good of the church. It’s a gift by God, offered through the Holy Spirit; and, it’s entrusted to a religious order. Today at BSM, some of the strongest elements of those charisms from our founding orders are:

- Trust that the Spirit provides us with means and the guidance to do what must be done and the diligence to bring about right relationships from the Sisters of St. Joseph;
- Kindness in holding one another accountable and provision of a practical, effective and accessible education from the Christian Brothers; and,
- A warm and generous welcome of all and a sense of rootedness and mission from the Benedictines.

At BSM, we strive to be mindful of God in all the events of our lives, live in relationship and strive for the common good, love our neighbors without distinction, live lives that balance the body, spirit and mind, and use our resources wisely and prudently.

Even as we seek continuous improvement of our academic, athletic and activities offerings, our commitment and faithfulness to the Catholic mission remains strong. Our community nurtures our Catholic culture through daily prayer, a Scripture theme for the year (Joy), ongoing spiritual education and faith formation and an annual retreat for faculty and staff, the celebration of Catholic Schools Week, and overt affirmation of our charisms.

BSM students experience our Catholic identity in daily theology class, campus ministry and Christian service. Even more importantly, our students experience a strong sense of community through the support and care of the adult role models. Students are accepted wherever they are on their faith journey and inspired to continue.

Advent of the Roman Missal

With the first Sunday of Advent came the full use of the Catholic Church’s new Roman Missal, Third Edition, in all parishes and at Benilde-St. Margaret’s School.

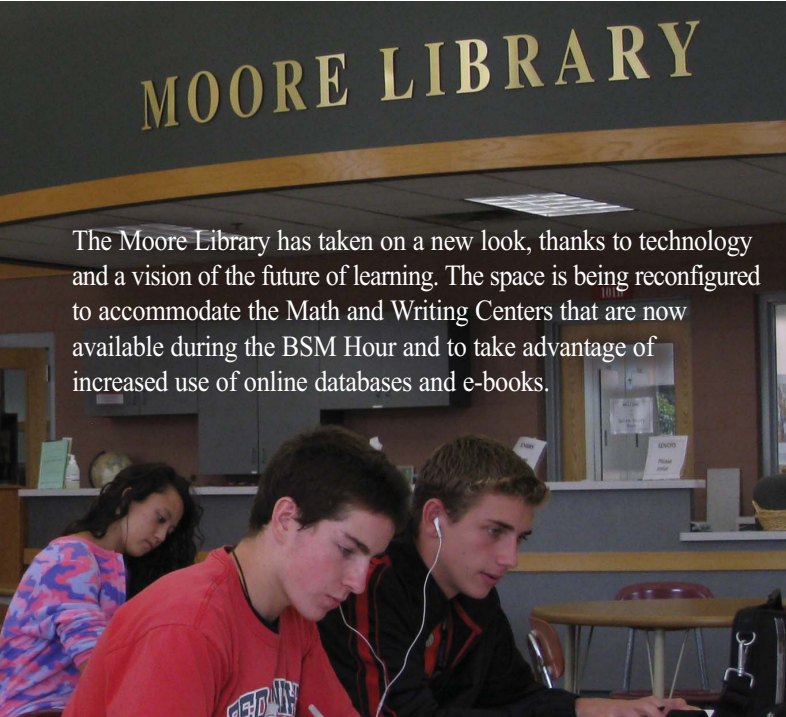
After Vatican II, Mass was spoken in the vernacular (everyday language of the people) instead of Latin. In 2000, Pope John Paul II authorized a new translation of the ritual text, which had come to be known as the Sacramentary. That familiar book contains, among other things, prayers and instructions for the celebration of Mass. Once again, it will be called the Roman Missal.

The original post-Vatican II English translation of the Roman Missal was created in “dynamic equivalence,” which translates the meaning expressed in the Latin text. This new translation is “formal equivalence,” words that are more verbatim to the Latin. Most people will find the language in the new edition of the missal a bit more poetic and formal in style. The changes have been heralded as an example of how the Catholic Church is always updating and revising itself.

Throughout BSM, students in theology classes have been studying and reflecting on the changes. They’re be ready when they attend weekend Masses and encounter the new wording, including some congregational responses as well as the Gloria and the Creed. During liturgies at BSM, we’ll experience some of the changes; however, the Gloria and Creed are not used in weekday liturgies.

To learn more about the Roman Missal, Third Edition, be in touch with your home parish. You may also go online for information from the Archdiocese of Saint Paul and Minneapolis, archspm.org/departments/worship/roman-missal.php, and to read a *Catholic Update* article by Rev. Lawrence E. Mick, a priest of the Archdiocese of Cincinnati, americancatholic.org/Newsletters/CU/preview.aspx?id=241.

Less paper, more electrons



The Moore Library has taken on a new look, thanks to technology and a vision of the future of learning. The space is being reconfigured to accommodate the Math and Writing Centers that are now available during the BSM Hour and to take advantage of increased use of online databases and e-books.

“Our library has limited capacity, and at eight to 10-thousand volumes, we were running out of space,” said Lynn Bottge, BSM librarian. “Add that to the expense of buying updated books and it began to make sense to explore our options.”

BSM students and faculty have access to 17 purchased online resources, ranging from Arts & Humanities to Spanish, as well as the Electronic Library for Minnesota databases and the Hennepin and Ramsey County library systems.

“But for some extraordinary books, which are still on our shelves, our library is not ‘special,’” said Ms. Bottge. “We have few rare books. Most of the information we rely on day-to-day, especially as it’s updated for the 21st century, can be found on very good websites. After plenty of research, I’m convinced that becoming a bookless library is a good idea for academic and financial reasons.”

As Ms. Bottge was building her case for bringing more technology into the library, others on campus were envisioning the BSM Hour, which was implemented in the senior high this fall. Steve Pohlen, director of technology and learning, was the catalyst for combining both initiatives and creating the resource centers in the Moore Library.

“It’s early days for the concept of the resource center as a learning tool and a space,” said Mr. Pohlen. “We’re pleased with the way students have adapted and are using their BSM Hour time to visit with math and English teachers in the Moore Library. When patterns of use develop, we’ll know more about how a more permanent facility should be designed.”

As for when the evolution of the library will be finished, Ms. Bottge observed, “Never!”

Search and rescue in Turkey

Eight of our newest alumni participated in the RoboCupRescue tournament in Istanbul, Turkey, in July. **Irena Cich ’11, Catherine Coleman ’11, Margaret Murphy ’11, Chris Nagel ’11, Tiana Press ’11, Alex Smith ’11, Nils Swenson ’11, Jack Tift ’11** and their robot represented BSM onsite. **Chris Monks ’11** qualified, but was unable to be a part of the delegation of Red Knights. All of the students were part of the BSM Advanced Competitive Science (ACS) Program under the direction of Timothy Jump.

“ACS is a conceptual engineering program,” said Mr. Jump. “Students explore mechanical and electrical systems, not just by learning theory, but also by doing.” The iterative process of problem formulation, abstraction, analysis, design, prototyping, testing and evaluating moves ACS students beyond simply collecting information and toward innovation and entrepreneurialism – and the occasional competition.

While BSM has regularly performed well in competitions both nationally and internationally, “It is not about winning,” Mr. Jump noted. “We’re part of a research consortium,” which provides unique opportunities for our students.

Here’s what some of the students wrote about the Turkey experience on the ACS blog (<http://acsatbsm.wordpress.com/>).

“It’s not about the struggles; it’s about all that we learned and all the effort we put into it.”—Margaret Murphy ’11

“We have been surrounded by some of the smartest people in the world. This project has opened me up to all the different types of people in the world, Germans, Turks, and Japanese (to name a few). This project has taught me what a lot of hard work and commitment can result in, and it has excited me even more for my future in mechanical engineering.”—Jack Tift ’11

“The tournament is such an exciting environment. You’ll be looking around and see folks from places you’ve only heard of in your geography class, but you’re united by the same aspirations. It’s exhausting and dispiriting, but every time we have a problem that we figure out, it’s all worth it.”—Irena Cich ’11



*“It’s been long frustrating days, but it has been worth it. It has never been about winning this tournament but about what we are learning; and I think we have learned a lot.”
—Chris Nagel ’11*

BSM Newcomers

Benilde-St. Margaret's is excited to introduce 12 new faculty and staff members to the community.

Josh Belanger, Basic Literature and Life Skills. Josh holds a B.S. in special education from Winona State University and an M.A. in educational leadership from Concordia University–St. Paul. He is married to Katie (see next). They live on the Rum River in Anoka with their Weimaraner named Rummy.

Katie Belanger, English. Katie has a B.A. in English literature from the University of Wisconsin–Madison, and both an M.A. and a teaching licensure in communication arts and literature from the University of Minnesota–Twin Cities. She has worked in book publishing in New York City and Minneapolis. Katie is also a registered yoga instructor and teaches in Anoka and Minneapolis.

Kristin Gilbertson, English and math learning specialist. She adds teaching to her current role as BSM's athletic trainer. Kristin graduated from the University of South Dakota with a B.S.Ed. in English and athletic training and received her M.A. from the University of Minnesota in kinesiology. She holds a teaching license from St. Cloud State in Special Education.

Christine Kinney, Art. Christine earned a B.A. in studio art and K-12 art education from St. Olaf College. Christine is originally from the small town of Stayton, Oregon. She had never been to Minnesota before leaving home for college.

Matt McMerty-Brummer, Spanish. Matt holds a B.A. in Spanish and political science and an M.Ed. from Notre Dame. He is studying at Minnesota State University–Moorhead to become an education specialist in educational leadership. Matt interviewed for the BSM position via Skype while he was teaching and living with his family in Honduras. Matt's son Carlos is a 7th grader at BSM this year.

Alyson Moore '01, History and English. Alyson has a B.A. in psychology from DePaul University, and an M.Ed. from Loyola University–Chicago. She is currently working on additional licensure in communication arts and literature from Hamline University. Her previous teaching experience was in Arizona.

Callianne Olson, English. Callianne earned a B.A. in English/communication arts and literature education from St. Olaf College. During her junior year, Callianne attended the University of Aberdeen in Aberdeen, Scotland, to study British literature.

Joe Pedersen, Theology. Joe received a B.A. in philosophy and theology and an M.A. in theology from Notre Dame. He recently served in the Archdiocese of Indianapolis with the Young Adult and College Ministry Program. Joe's brother-in-law is Zach Zeckser.

John Sabol, Business. John earned a B.A. in finance from the University of Minnesota–Duluth and recently received an M.A. in education from the University of Minnesota–Twin Cities. John grew up in Bloomington and attended Nativity of Mary and Jefferson High School. He has hiked along the Great Wall of China, is an Eagle Scout, and worked in the financial markets.

Brad Zahler, Art. Brad completed his undergraduate degree in art education at the University of Minnesota–Duluth. He received an M.A. in curriculum and instruction from St. Catherine University. Brad, his wife and three children live in Zimmerman. Brad loves fishing, hunting, and playing ball with his kids.

Kate Kuffel Hamill '96, Admissions. Kate is the associate director of admissions. Her grandmother, **Deloris Keiffer**, graduated from SMA in 1932; her mother, **Rita McHugo**, is a 1963 SMA alumna, and father, **Ed Kuffel** is in the Benilde High School Class of 1965. Kate is married to Tim. They live in Deephaven with their three children.

Rachel Kuzma Olson '93, Alumni Relations. As a senior, Rachel was named the Athena Award winner and a President's Award recipient. She brings experience in pharmaceutical sales and printing/advertising to her work reconnecting with fellow alumni. Rachel is married to Chris, and they have three children.



Back row (l-r) – Christine Kinney, Kristin Gilbertson, John Sabol, Brad Zahler, Joe Pedersen, Matt McMerty-Brummer, Josh Belanger. Front row (l-r) – Alyson Moore, Kate Kuffel Hamill, Rachel Kuzma Olson, Callianne Olson, Katie Belanger.

Exploring Cultures, Understanding Others



Working the fields of Guatemala

At Benilde-St. Margaret's School, we believe that diversity and multicultural education are essential components of our students' lives as we prepare them to live and work in an ever-evolving, complex society. BSM is committed to diversity, gender fairness, and disability sensitivity. We strive to promote a culture where mutual support and admiration can flourish, and where doing good for others is an everyday part of life.

"We may have different religions, different languages, different colored skin, but we all belong to one human race." Kofi Annan

Every 10 years, the United States counts people. The snapshot that is our census tells us just how complex our national, state and local societies are becoming. From 2000 to 2010, Minnesota's population grew 7.8 percent to 5.3 million.

State Population by Race

Racial Category	Percent of Population	Percent Change 2000-2010
White alone	85.3	▲ 2.8
Black or African American alone	5.2	▲ 59.8
American Indian and Alaska Native alone	1.1	▲ 10.8
Asian alone	4.0	▲ 50.9
Native Hawaiian and Other Pacific Islander alone	---	▲ 8.9
Some Other Race alone	1.9	▲ 56.5
Two or More Races	2.4	▲ 51.2

We keep an eye on these statewide and regional data as a way of understanding the demographic makeup of the BSM community.

Each year, BSM collects information from parents about students and asks them to self-identify their race. In 2008, eight percent of the student body was a race other than Caucasian.

According to the Minnesota State Demographic Center, the percentage of every self-reported race increased. While we are still a predominantly Caucasian populace, the numbers of people of color in our state are rising.

The Minneapolis-St. Paul region saw an overall population increase of 10 percent in the last decade. The minority population in the Twin Cities region increased by 22 percent.

A dynamic Catholic learning environment is the result of the interactions of different people, cultures, and ideas – inside and outside of the classroom.

That percentage rose to 12 in 2011. In 2011, 17 percent of the parents of junior high students said they are people of color. In the senior high, the number is 16 percent. A dozen years ago, when Lidi Rosado-Guzman came on board as a Spanish teacher, Hmong students were the predominant non-Caucasian group on campus. Here's how the numbers break out in the senior high this year:

- African-American – 51
- Latino – 32
- Asian Pacific, Icelander – 29
- Caucasian – 776
- Mixed race/bi-racial – 25
- Native American – 3
- Other – 6

Ms. Rosado-Guzman, who was named BSM's diversity coordinator three years ago, explained, "Much of the increase in the numbers of students of color at BSM can be attributed to our efforts to look for ways in the curriculum and the culture to make the experience for students of color a positive one. Our retention efforts are making a difference, and families are spreading the word to their neighbors, friends and family."

All of that said, a diverse community is not marked by race alone. The BSM senior class is 232 strong; juniors-219; sophomores-241; freshmen-228; 8th graders-141; and, 7th graders-123. The gender split is 53 percent boys and 47 percent girls. Seventy three percent of our students are Catholic. They come from more than 30 different school districts with the largest number of students coming from the Wayzata, Robbinsdale, Hopkins, Minneapolis, Eden Prairie, Edina, Minnetonka, and St. Louis Park districts.

"BSM is becoming multi-lingual, -racial, and -ethnic," noted Ms. Rosado-Guzman. "We may not have racial balance, but we expand our students' horizons."

Horizons begin to expand in the junior high. Students in all grades are immersed in Catholic social teaching, which calls us to respect:

- the life and dignity of the human person;
- the importance of family, community, and participation;
- the rights and responsibilities of all people;
- the need to provide for the poor and vulnerable;
- the dignity and rights of workers;
- our solidarity as one human family;
- our role as stewards and caretakers of God's creation.

In a variety of ways, in all grades, we look for and create opportunities to include everyone and to learn about and appreciate our differences and similarities. Sophomores have attended a Respect Retreat. In the last 10 years, our students have visited and worked in many countries, including Guatemala, India, Ghana, Rwanda, Costa Rica, Peru, Dominican Republic, Mexico, Spain, France, Greece, Italy, Turkey, China, Korea, Japan, and Egypt. They've worked in schools, orphanages and farm fields, because helping one another and respecting the value of all people is a responsibility that is at the heart of our traditions and Catholic mission. BSM benefits from the presence of international teachers who come to us through the Amity exchange teacher and intern teacher programs. Coaches work on diversity issues with their athletes. Teachers learn to diffuse potential conflicts through training, speakers, and workshops. Particularly effective are presentations to faculty by panels of students who discuss their needs.

“Teachers consult with me when they are developing their curricula,” said Ms. Rosado-Guzman. “They are always looking for ways to infuse cultural awareness into the students’ work.”

For example, the English Department incorporates diversity issues into the literature the students read. Maura Brew discusses wage disparity while Scott Effertz explores the Latino perspective. Zach Zeckser looks at immigration and white privilege, and Nancy Stockhaus teaches her choir songs in different world languages. Spanish IV and AP Spanish students read literature that covers concepts of machismo and culture. Lower level world language students are introduced to the diversity in Latin cultures. Susie Hinnendael and her colleagues in theology emphasize the dignity of each human being and discuss “isms.” David Kuntz folds the diversity issues into his history courses while Carol McLain works them into her physical education life skills program. Over the Martin Luther King holiday, James Cave and his class of junior high students go to a community in the southern United States.

Even a turn in the theater is a chance to learn more than lines, songs, and dance steps. As students prepared to stage the fall play, *Fiddler on the Roof*, they met with senior high math teacher Rosalie Goldberg to discuss the history of Russian Jewry, particularly at the turn of the 19th to the 20th century, when the play is set.

“At the time, most Jews in Russia were forced to live in an area between the Baltic and Black Seas and west of Moscow called The Pale of Settlement,” explained Ms. Goldberg. “There was poverty and oppression. Jews weren’t allowed to own very much, if any property, and they paid more taxes than other Russians. They were confined to small towns called *shtetls*, where traditions and superstitions, as well as the study of the Torah and Bible, were very important elements of their culture. The rabbi was the most important leader in the community.”

If Russian Jews wanted to move, they had to get approval from the government. Then, in the 1870s and 1880s, the Jews were subjected to pogroms – organized persecution and extermination. The cultural and ethnic devastation was a major reason for the mass immigration of Russian Jews to the United States between the late 1880s and the mid-1900s. All of this real human drama is the context, the setting for the fictional musical in the Hamburg Theater.

“Diversity” at Benilde-St. Margaret’s means many things. Over time, the definition of the concept has changed. Today, our community shows its diversity in terms of socio-economics, race, geography, religion, gender, and interests in academics, activities and athletics. The challenge for any community is to connect “diversity” to “cultural sensitivity” to “acceptance.” At BSM, through the concerted efforts by the entire community, “diversity” is also connected to “service” to “a global view” to “community openness” to “a welcoming environment.” All of this – social justice and respect for each person – is at the heart of the statement that leads our mission: Benilde-St. Margaret’s is a dynamic Catholic learning community....

Peers Respecting Others

You're the one
who took a seat
beside the kid
the others laugh at
and put down
and push around
just because he looks different
or talks different
or acts different
and when you got to know him
you found out
to your surprise
he was pretty much
the same as you.



In the theatre (l-r) – Rosalie Goldberg, Colin FitzGerald, Brenton Jayasuriya, Alexa Dietz, Rachel Hogen, David Nelson, Emily Kline

ALUMNINEWS

1956

The St. Margaret's Academy Class of 1956 ▶

enjoyed a summer lunch at Piazza's Ristorante in Golden Valley: first row (l-r) **Mary K. Cowan, Nancy Riley Mayer, Mary McHugo Burgess, Darlene Gifford Bramwell, Mary Jo Romaniak DeWitt, Jean McMullin Shannon, Patricia Hommes Auger, Carol Lundby Northenscold, Zoe Anne Lillie Brandberg, Joan Fontanilla, and Mary Ann Oeffling Suttle;** second row (l-r) **Mary Hoag Marty, Betty Kavanaugh Dennis, Carol Renckens Torborg, Karen Swan Slaney, Dorothy Zawislak Artmann, Margaret Ascher Roback, Jackie Demeules Beiring, Jeanne Wahl Radermacher, Kathryn Martin Stoddart, MaryAnn Carroll DeZiel, Sandra Swierczek Eickhoff, Barbara Moelein Maloney, Patricia Spellbrink Zierden, Patricia Gavin Campion, Rosella Schaefer, Jacquie Sprafka Slovak, Kathleen Ziehwein Slaughter, Carol Carline Enck, and Lynn DeLisi Glenn.** Not pictured but attending, **Mary White O'Shaughnessy.**



with a weekend Twins game, golf and reunion dinner at BSM: front row (l-r) **Pat Casey, Paul Wozny, Win Wood, Jeff Winter, John Wilhoit, Robert Walsh F.S.C., Tom Walch, Marty Strong, Tom St. Martin, Larry Smith, and Jim Joranger;** second row (l-r) **Tedd Schuster, Gary Scherer, John Ryan, John Roers, Don Rachner, John Poseley, Mike Petschl, Tom Olson, Scott O'Brien, and Jim O'Brien;** third row (l-r) **Charlie Moore, Mike Merriam, Chuck McGinty, George Manke, Paul McCormick, Don McKenzie, Steve Montreuil, John Maloney, and Dick Jones;** fourth row (l-r) **Duane Miron, Tom Legierski, Dick Lehan, Jim Heiland, Michael Hassing, Ken Hart, Steve Halluska, Leo Giesen, Dwight Filipek, and Mike Fargione;** fifth row (left to right) **Bill Daly, Roger Carlson, Bill Bonin, Dick Blooston, Jeff Bissel, John Baregi, Tom Aulwes, and Bill Divine;** sixth row (l-r) **Mike Lewis and Doug Babcock.** ▼

Jim Heiland has always loved racing cars. He built and raced his first stock car in 1961, earning himself Rookie of the Year at Raceway Park. Fifty years later, Jim is still racing. He now restores vintage stock cars and belongs to the IMCA Old Timers vintage race group that participates in exhibition racing all over Minnesota, Iowa, and Wisconsin. **John Poseley**, who lives in Sandpoint, Idaho, and **Jeff Winter**, who lives in Minneapolis, met halfway (800 miles) in Miles City,

Montana, on their motorcycles and rode back to Minneapolis together to attend their 40-year class reunion in August.

Robert Walsh, FSC celebrates 50 years as a Christian Brother.

1962

Mary Ann Delmonico Kuharski received the

Distinguished Alumni Award from the Saint Paul Seminary School of Divinity for her commitment to society's most vulnerable. The annual award is given each year to recognize those who have lived their vocation in extraordinary ways. Mary Ann, the director and founder of PROLIFE Across AMERICA, is an honorary alumna of the Saint Paul Seminary School of Divinity.

1965

Graduate and former Benilde faculty member **Ric Rosow**

and his wife, Vicki, started a non-profit organization called "Companions in Compassion," connecting people in America with Tibetans in the area near Oh Szang Village. Their efforts have assisted in providing warm clothing to Buddhist nuns, school supplies to village children, scholarship funds for elementary and secondary education, and have paid the expenses for the village's first student to attend a university in Beijing.

1969

Mary Newcomb Hatcher and her daughter, **Marty '98**, are the second and third generation in their family business, Syndicate Sales Corp. The company imports products that are featured at state fairs. They also offer promotional products and services. Mary and Marty are pictured at the Minnesota State Fair celebrating the company's 78th year at the Great Minnesota Get-Together. ▼



1959

Mary Sandra Eckes and Robert John Miller were married on May 21 at a noon ceremony at Mary, Mother of the Church, Burnsville. Sandra and Robert dated during their senior year in high school and reconnected 50 years



later. The wedding was attended by their children and grandchildren as well as family and close friends. **Renee Belair** was one of the guests attending the ceremony.

1961

Fifty years after graduating from Benilde, the **Class of 1961** enjoyed their first-ever class reunion



1974

The St. Margaret's Academy Class of 1974 ▶

enjoyed a summer reunion gathering and exchanged treasured memories: back row (l-r) **Laura Humbeutel Egan, LeAnne Laskow Hammer, Gemma Graham, Anne Ryan Gauer, Christine Mackenzie, Karen Johnson, JoAnne Hynes, Mary Jagodzinski Leizinger, Deb Loftus Stahlecker, Kathy Sawdy Powell, Shari Miezwa Tschida, Janet Williams, Mary Ganley Strot, and Mary Clare Suddendorf**; front row (l-r) **Pauline O'Brien Jezierski, Dorothea Haeger Bowar, Paula Ryan, Mary Kaye Anderson Gorrilla, Katie Boller Hickman, and Peggy Murphy Cerrito**. Attending but not pictured: **Rita Hathaway and Louise Kurzeka**.



1977

Patricia Milun was appointed by Gov. Mark Dayton as

Chief Judge of the Minnesota Workers' Compensation Court of Appeals in April. Milun has dealt with worker's compensation law throughout her career, first as a workers' compensation trial attorney for the law firm of Larsen, Heck, Klimek & Powell and then for 18 years as a workers' compensation judge. As a judge, she served in the Minnesota Department of Labor and Industry, as chief judge of the Settlement Division of the Workers' Compensation Court, and as a worker's compensation and administrative law judge for the Minnesota Office of Administrative Hearings.

1979

Jim Reinhardt was one of six small business leaders

to receive the Leading with Faith Award sponsored by the Catholic Spirit. Jim is the owner of Minnesota Rehabilitation Services. The award affirms "Catholics whose business practices and work habits are guided by their Catholic values and reflect the teachings of Jesus Christ and his church." Jim, his wife Nadine, and their family live in Burnsville.

1984

Getting together to share fond memories of BSM

were: back row (l-r) **Amy Scholl Ward, Shannon Lennes Holleran, Meghan Sheridan Bridges, and Jennifer Stoddard Kelly**; front row (l-r) **Paula Huttner, Debbie Hanly Knaeble, and Cathy Atkinson Frazier**.



1985

Nancy Wisner recently accepted a position as

executive vice president of Wells Fargo and COO of the WF Advantage Funds. In this position, Nancy has responsibility for Technology, Fund Treasury, Operations, Data Strategy, and Learning/Development. Nancy will be a guest lecturer at the Providence College Business School in the spring of 2012.

1990

Peter and Heather Gallagher Lynch are

happy to announce the birth of Conor Gallagher Lynch, on May 6, in Morges, Switzerland. Big sisters Fiona (7) and Delaney (3) and big brother Liam (4) welcomed home their new baby brother.

1986

Mary Pat Lynch Ruff,

Jean Thompson, Jenny Berg, Barbara Wanzek Jullian, Marce Doyle Piller, Maureen Weber Grazzini, Amy Hastert Voettiner, and Lisa McCauley Sammons

gathered for a photo at Bunny's during their reunion weekend in July. ▲



1988

Jeff Conzemius and

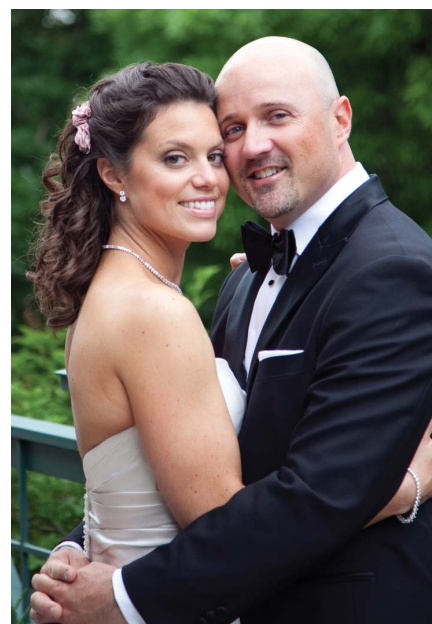
Sydney Aakhus Conzemius are currently teaching in Surabaya, East Java. Surabaya is the second largest city in Indonesia. Jeff and Sydney have two children, Will and Mary Mable Margaret.

Mike Broyles and Kari Lapinsky Thomas were married on June 25 at the Minneapolis Golf Club. Mike is an account executive with Wells Fargo Institutional Lending and Kari is a real estate attorney for Buffalo Wild Wings. The Broyles live in St. Louis Park. ▼

1989

Maud Hixson has been

acclaimed as one of the area's top jazz singers. In 2003 she was presented as "Best New Voice" at a local jazz festival. She then quit her job as a French interpreter for Northwest Airlines to become a full time musician. She has worked with a wide array of musicians and in October appeared at the Rose Theater of Lincoln Center as part of the New York Cabaret Convention 2011. She is pictured with **Sandy Janssen Barry '86** following a local performance in September. ▼



ALUMNI NEWS

1991

John Duda finished 49th overall in a 100-mile race in Leadville, Colorado, in 23 hours and 49 minutes. The Leadville Race Series is an elite racing series in Colorado. John heads to New York for the NYC Marathon in November. John and his wife, Annie, live in Boulder.

Andy Haeg lectured students from The Manila Times College about the topic Citizen Journalism during a trip to the Philippines in August. Haeg is an expert in participatory media, citizen journalism, business and economics journalism, design thinking, and social media. Haeg's brainchild, Public Insight Network (PIN), provides a platform for connecting trusted journalists with knowledgeable sources around the world through the Internet and other means of communication.

Nicole Burroughs Carter and her husband, Ryan, welcomed Ainsley Rae Carter into the world on July 16, the same day as Nicole's 20-year class reunion.

1992

Tim Ronhovde is one of only five teachers in the Twin Cities who have been selected by the University of St. Thomas School of Education to participate in an inaugural fellowship program designed to produce extraordinary classroom teachers. The five recipients were selected from 105 applicants from 20 school districts and 21 private schools in the Twin Cities metro area. Each participant in the year-long St. Thomas Teaching Fellowship program receives a stipend, iPad and graduate-level academic credits. Tim is a teacher in the Edina School System.

1993

Justin Faust and his wife, Debbie, and two daughters, Lexie and Asleigh, moved to Avon, Connecticut, in June. Justin accepted a VP position with Dowling Capital Partners, a private equity company. The Faests are building a new house and will be moving in there in December.

Jason Doll and his wife, Dawn, are proud to announce the birth of Jaden Matthew Doll on June 10. Big sister Isabella is taking good care of her new little brother. Jason is a corporate recruiter at Ameriprise Financial, and Dawn is a registered nurse at Hennepin County Medical Center. The Dolls live in Minneapolis.

Rachel Kuzma Olson began as a BSM associate director of alumni relations in June. She brings experience in pharmaceutical sales

as well as printing and advertising and is excited to be back at BSM, reconnecting with fellow alumni.

The girls from 1993 enjoyed a fun weekend in Savannah, Georgia: back row (l-r) **Gretchen Ehlinger, Sarah Johnson Campbell, and Jo Hamburge**; front row (l-r) **Christi Lutgen, Katie Mason, Anne L'Herault Stepchuk and Barb Teske-Young**. ▶



1995

Angela Frank Downing and her husband, Jon, welcomed their third child, William Charles, on February 10. Will was greeted by big sisters Julia (3) and Charlotte (5).

1996

Jimmy Grant finished 2nd in the Missoula Marathon at 2 hours, 36 minutes. Jimmy is a historian for the Historical Research Associates in Missoula, Montana, and his wife, Lori, is an elementary school teacher. The Grants have two daughters, Adelyn (2) and Amelia (9 months).

Kate Kuffel Hamill has joined BSM as the associate director of admissions. Kate previously taught at St. John the Baptist in Excelsior. Kate is a third-generation alumna.

Kate Culp Kerfoot and her husband, Mike, are pleased to announce the birth of Jack Michael on March 24. Jack enjoys the company of big sisters Elizabeth (5) and Claire (3). The Kerfoots live in Minneapolis.

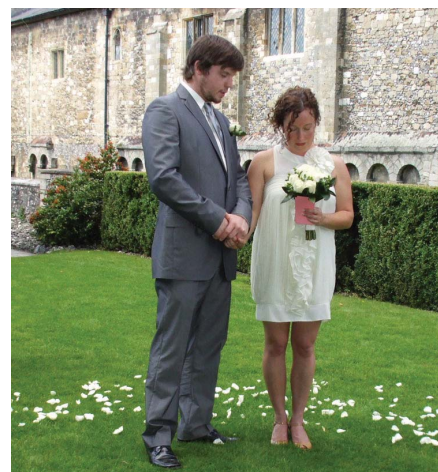
Emily Zins Petersen and husband Adam Petersen are excited to announce the birth of their baby girl, Eleanor. She was born on June 26, and was welcomed home by her older sister, Margaret (1). The Petersen family lives in Helena, Montana. Emily is a high school science teacher, and Adam is a fisheries biologist for the state.

Kathleen Martinson Stutzman and her husband, Chad, announce the birth of Lily Katherine on August 12. Kathleen is a senior project manager for Weber Shandwick, and Chad is a buyer at Target.com

1997

Adam Ager was married to Maureen Bradley on August 11, 2009, in Winchester, England, at the Winchester Cathedral. Adam graduated with an MBA in June from Augsburg College. The Agers live in Minneapolis. ▶

Melanie Busch married Bill Teerlinck on June 25, at the Minneapolis Club. The couple lives in Indianapolis, Indiana, where Melanie works in human resources for Ameriprise Financial and Bill is in his fifth year as a defensive coach for the Indianapolis Colts. ▼



Zachary Faust and his wife, Amanda, are delighted to announce the birth of their daughter, Cora Catherine, at 7lbs. 2oz., on May 25. Zachary and his family live in Portland, Oregon. Zachary is the owner of Zafa Glass LLC, and Amanda is an RN/BSN at Providence Vincent Medical Center

Todd Hierlmaier is the head cross country coach at St. Thomas Academy. Todd was named the Minnesota Class AA Cross Country Coach of the Year in July 2010.

Father Jim Liekhus is beginning his third year as pastor of St. John the Evangelist in Hopkins. July 1, Fr. Jim was also named pastor of St. Joseph in Hopkins. The two parishes are working toward merging into a single congregation.

Mike Moen and his wife, Tricia, are thrilled to announce the birth of their first child, Alyssa Anne, on August 19. Mike is a producer for Illinois Public Radio, and Tricia is an athletic trainer. The Moens live in Pingree Grove, Illinois.

1999 Vancouver Canucks player **Andrew Alberts** returned to the St. Louis Park ice rink in August to skate with a group of BSM hockey players and their friends. Andrew organized drills to help the players improve their skills, and they all enjoyed a friendly scrimmage and pizza party following the event. ▼



2001 **Alyson Moore** accepted a position on the BSM faculty teaching 7th grade English and 8th grade history. She has a B.A. in psychology from DePaul University, and a M.Ed. from Loyola University-Chicago, and is currently working on additional licensure in communication arts and literature from Hamline University. Prior to coming to Minnesota, she taught for a year at Glenn F. Burton Elementary School in Glendale, Arizona.

Howard Patrick arrived happy and healthy for **Amy DesLauriers Crowther** and her husband, John, on August 12. Amy is a selection coordinator for Lake Country Builders, and John is a research analyst at Piper Jaffray. The Crowthers live in Minneapolis.

2002 **Katherine Fleischhacker** and Garrett Herzig were married May 29, 2010, at The Church of St. Therese in Deephaven, Minnesota. Katherine is the master electrician at the Huntington Theatre Company, which is affiliated with Boston University. Katherine also teaches theatrical lighting classes at Emerson College. Katherine and Garrett live in Somerville, Massachusetts. ▼



Colleen Dukinfield Griepentrog graduated with her Masters of Music Education from VanderCook College of Music in Chicago with a 4.0 GPA, and earned honors designation on her master's project. She lives in Chippewa Falls, Wisconsin, with her husband and teaches elementary music for Barron Area School District in Barron, Wisconsin.

2004 **Pehr Hovey** is dabbling in the physical and the digital to explore new ideas and expose the public to new possibilities and interfaces. Pehr is currently on contract as an imagineer at Disney.

Ben Scott graduated from Marquette University Law School in May. Ben interned for U.S. District Court Judge Susan Richard Nelson following his graduation.

2005 **Lieutenant JG Ian Campbell** is currently serving in active duty on the U.S.S. Pinckney DDG-91, based out of San Diego, California. This is Ian's second deployment to the Arabian Gulf. Ian has been accepted to a two-year naval post graduate program in engineering at MIT which begins in the spring of 2012.

Katie Hawkinson was the stage-manager of the theater production of Rocky Horror Live at the Lab Theater this fall.

Jenn Korducki and **Bobby Krenn** were married on October 16, 2010, in Carefree, Arizona. ▼



Phil Koski received a M.A. in history from St. Louis University on May 21. On May 19, Phil presented a paper entitled "Calatrava, Citeaux and Crusade in Spain between the Twelfth and Thirteenth Centuries" at the 46th International Congress of Medieval Studies at Western Michigan University in Kalamazoo, Michigan. The congress is an annual gathering of over 3,000 scholars interested in medieval studies. In July, Phil traveled to Leeds, UK, where he presented another paper entitled "Spanish Origins: Understanding Arnaud Amaury and the Albigensian Crusade" at the International Medieval Congress (IMC) hosted by the University of Leeds. The IMC draws medievalists from over 40 countries, with 1,100 individual papers and 400 academic sessions. The Leeds International Medieval Congress is Europe's largest annual gathering in the humanities. Phil returned to St. Louis University this fall to continue his studies in medieval history.

ALUMNINEWS

2007

Joe Jensen, Lauren Walsh and Peter Ritchie graduated from the University of Notre Dame May 22. Joe began medical school at the University of Minnesota. Peter is working for Ernst & Young in Minneapolis. Lauren is an associate with Boston Consulting Group in Minneapolis. ▼



Jim Renier graduated from St. John's University with a degree in biology with a pre-medicine focus. He is currently working in surgery as a cardiovascular monitor technician with Allina Hospitals. He plans to begin medical school in the fall of 2013.

2009

Katie Renier traveled to the World Youth Day in Madrid, Spain, with a group from Holy Name of Jesus in Medina. One of the highlights for Katie was being selected to be present for Adoration in a special section very close to Pope Benedict XVI. The group also traveled to Fatima, Portugal, on August 13, an anniversary of the Blessed Virgin Mary's appearance to the three children.

2010

Former BSM soccer goalkeeper **Maddie Jobe** was named Defensive Player of the Week at Iowa State University. Maddie had not allowed a single goal in 380 minutes of action. This is the second time Maddie has earned this Big 12 honor.

Connect with the BSM community on Facebook and Twitter.



2011

Patrick Daly, who plays for the University of Wisconsin hockey team this season, was drafted in the seventh round by the New Jersey Devils. The 6-foot, 178-pound defenseman was taken 154th overall.

John Marinelli, goalie for the West Point Black Knights' soccer team, earned Patriot League BRINE Goalkeeper of the week in early September. He is the first Army goalkeeper to earn this award since it was initiated in 2006 and the first Black Knight to earn a weekly certificate since 2007.

Going Greener – Staying in Touch

We're guessing a lot is happening in your life. We want to hear about it. If you would like to update your contact information, go online to www.BSMschool.org/SendMeNews and complete the e-mail opt-in form. It'll take a moment, save a tree, and keep all of us in the know about each other. Thanks.

IN MEMORIAM

Della Mae Bowar
Mother of Joel '67

Elizabeth Staeger Ciatti '40

Charlotte Kay Downing
5-year-old Daughter of Angela Frank Downing

Katheryn Pilon Erickson '64
Sister of Joann Pilon Stitt '69
Tom Pilon

Grant (Jerry) Feldman
Father of Steve
Kathleen
Sharon Feldman Bradley '83
Fran Feldman Hartigan '86

William Foley
Father of David '77
Kate Foley Gregg '80
James '82
Paul '83
Matthew '97

Kathleen Franzen '69

Catherine McGill Giebel '49
Sister of Dorothea Ann McGill Adams
Lynn McGill Rusciano '61
David McGill

Alice Droll Graca '44
Mother of Ed '66
James
Tim
Joseph

Collette Schwebach Hardin '33
Mother of Mary Beth Hardin Maile '71

Ira Heilicher
Father of Hannah '08

Rosemary Hoschette, OSB – past faculty

Marilyn Hengstler Kelly '52

Sharon Wright Kierski '58

Joseph LaBat '64

Thomas Mooney
Father of Sue Mooney Barthel '82 – deceased

Margaret Sullivan Mundy '46
Sister of Patricia Sullivan Govednik '39 – deceased
Rose Sullivan Sisson '54

Ellyn Murphy '64
Sister of Ann Murphy Roman '68

Gertrude Palmer O'Brien '35

Don Rogers
Husband of Mary Mase Rogers '53

Stephen Schugg '67
Brother of Sandra Schugg Van Orden '65

Naureen Gleason Sowles '52

Diane Pence Van Valkenburg '64
Sister of Carole Pence Miller '62
David Pence '64
Ellen Pence '66
Fran Myran

Nancy C. Meloche Vendel '50
Sister of Susan Meloche Hansen '55

Melvin Warnert
Father of Pam Warnert Pauley '73
Cindy '76
Todd '78

Dolores Harrer Weber '44
Sister of Mary Harrer Rode '46

Bulletin Board

Hall of Honor



Monday, January 30, 2012, at BSM
Social – 5:30 p.m.
Dinner and Program – 6:30 p.m.
Reservations required, see back cover

Alumni Hockey

Saturday, December 31, 9 a.m.
St. Louis Park Rec Center, 3700 Monterey Drive

Basketball Honoree

BSM Celebration of Bill Haben's Induction into the
Minnesota Basketball Coaches Association Hall of Honor
Tuesday, December 13, 7:15 p.m., Haben Center
BSM Boys' Basketball vs. Minneapolis South

We want you! –

The alumni relations team is building a network of class contacts. If you are interested in helping BSM keep connected with graduates, please e-mail Sandy Janssen Barry '86 at SJanssenBarry@BSMschool.org to find out more.

Alumni Hockey Players and Alumni Hockey Parents

Girls' Hockey vs. Hill Murray
Saturday, January 28, 2012,
2:30 p.m.

Boys' Hockey vs. Totino-Grace
Saturday, February 11, 2012,
2:30 p.m.

Alumni Basketball Players and Alumni Basketball Parents Tuesday, December 22

Girls' Basketball vs. Hill Murray
6 p.m.

Boys' Basketball vs. Academy
of Holy Angels
7:45 p.m.

Alumni Wrestlers and Alumni Wrestling Parents

Celebration to Honor
Coach Jerry Henk '71

Friday, February 10, 2012,
7 p.m.
BSM vs. Chisago Lakes



Have you
"liked"
us yet?

Stay up to date with alumni news and happenings from BSM, and see photos from events and reunions. Like Benilde-St. Margaret's Alumni Association on Facebook today.

Alumni Album



40-Year Reunion—Mark Buchanan, James Gangelhoff and Robert McCarthy had many reasons to smile at their summer reunion.



Three Generations—Katie Monahan's graduation from BSM was cause for a three-generation celebration; Laura Monahan '08, Vera Haraburda Bednarczyk '31, Carol Bidnarczyk Monahan '54, Katie Monahan '11 and Matt Monahan '12.



Welcome Alums—R.K. Glover and Stephen Kedzuf celebrated their 5th reunion in style with other former Red Knights from the class of 2006.



Lakeside View—The Class of 1996 celebrated their 15-year reunion at Bayside Event Center: front row (l-r) David Haeg, J.B. Davis, Katie McManus Johnson, and Kate Kuffel Hamill; 2nd row (l-r) Wendy Hever Boldischar, Molly Hort, Jim Boldischar, Heather Humphrey Faber, Lisa Munzenrider, Katie Bishop, Bjorn Erickson, Eddie Paprocki, Mike Engstrom, Kate Leahy, Amy Engwer Fee, Paul Fee, and Kerry Schwain; 3rd row (l-r) Travis Swenson, Colin Wright, Jodi Lucas Voelker, Angie Coffee, Tom Gearty, Jill Rosstedt Kugel, and Anne Marie Dominguez; back row (l-r) Corey Anderson, Jim Dunbar, Scott Murphy, Jeff Rauenhorst, and Dan Cooley.



Mothers' Group—Nine BSM mothers whose children graduated in 2001 gathered for a 10-year reunion at the beach house of Charlotte and Rob Ross at Nag's Head, North Carolina, in early August. The group was formed by Charlotte Ross and Colleen Kemp to help empty-nesters share experiences and send "care packages" to daughters and sons in college; Barb Wander (Kristin '01, Matt '99), Colleen Kemp (Rachel '01, Rebecca '98), Mary O'Rourke Wickersham (SMA '71, son Chris '01), Georgeann Wobschall (Beth '01), Liz Tyree (Mike '01, David '06), Pat Phillips (Angela '01), Charlotte Ross (Lauren '01), Jodie Grannes (Tony '01), Carol Pexa (Caitlin '01).



BBQ on the Plaza—Greg Daniels '86, Chris Marnell '86, and Tom Ruder '86, shared memories at their 25-year reunion.



Splash Pad—Anne Byron Anderson '91 and her husband, Ryan, enjoyed the pool with daughter Victoria and fellow BSM classmates during the 1991 reunion weekend.

Alumni Album



Boston College Graduation—Five members of the BSM Class of 2007 graduated from Boston College in May and they had great support from fellow Red Knight alumni: back row (l-r) Matt Moore '04, John Moore '74, Andrea Scherer Belton '93, and Molly Mlnarik Wolford '05; front row (l-r) Charles Moore '07, Alyson Moore '01, Lauren DeJute '10, Stephen DeJute '07, Laura Scherer '07, Bo Mlnarik '07, Katherine Poley '07, Blair Mlnarik '04, and Chase Mlnarik '10. Also attending but not pictured, Peter Sherer '82.



First Alumni Lacrosse Game—Alumni from past lacrosse teams joined coaches, current players, and families for a spirited game and cookout on June 20. Surviving the intense action were: back row (l-r) Varsity Head Coach Colin Mulcahy, Varsity Assistant Coach Andy Michog, J Sisk '11, Michael O'Toole '08, Paul Graupner '12, Simon Gondeck '12, Ryan Butts '10, Jamie McCormick '08, Connor Gallagher '10, Andrew Dale '08, Charlie Gondeck '10, Michael Gilligan '07, Bo Mlnarik '07, Thomas Gilligan '12, Michael O'Meara '08, Tim McNulty '05, Dan Quealy '09, Liam Gillespie '11, John Biglow '08, Sean O'Toole '10, Luke McCormick '12, Christian Horn '12, B Squad Coach Daniel O'Donnell, and Harry Grones '14; front row (l-r) Jack Tucker '13, Christian Rekow '11, Will Hoesley '12, Taylor Topousis '11, Adam Clark '11, Brennan Harrington '06, Sam Gondeck '07, Patrick Johnson '07, Mike Hickey '04, Mike Evans '05, Matt Draxler '07, Patrick Gilligan '09, Doug Biglow '04, Ryan Lawyer '12, Zach Silvestri '11, Michael Mullin '11, and Peter Schubloom '11. Not pictured: Stu Neville '08.



All Smiles—Steve Dunbar '01 and E.J. Baldwin '01 attended their 10-year reunion at Bar 508. A great time was had by all.



Arizona Celebration—Several Red Knights were on hand to celebrate the marriage of Jenn Korducki '05 and Bobby Krenn '05 in Carefree, Arizona: Jono McShane '05, Aly Baumgartner Murphy '03, Annie Baumgartner '05, Jim Krenn '01, Jenn and Bobby, Adam Krenn '00, Joe Martyn '05, Nadia Aboussir '05, and Nick Hittler '05.



Baseball—This year's alumni baseball game brought back several sluggers: David Tranvik '10, Patrick Duda '09, Brendan Rooney '10, Connor Kapryan '09, John Fleischhacker '05, Matt Nelson '06, Alex Wahl '05, Coach Greg Hoemke, Leon Duda '79, Coach Ryan Collins, Dan Cooley '96, John Feltl '89, John Beutz '89, Justin Fier '89, Jon Fier '89.

Alumni Album



Class of '91—Ryan Billman Browne, Sally Roth, Renee Schunk, Carol “Peaches” Nelson Schultz and Tina Jansen White posed for a picture at their reunion in July.



Soccer—Former Red Knight soccer players took on the varsity hopefuls in a summer showdown in August: back row (l-r) Sam Lantz '09, Jack Allgaier '10, Dave Platt '85, Ryan Hafner '08, Ben Wegleitner '08, Josh Busacker '06, Eric Lind '94, A.J. Sherman '11, and Henry Raether '11; front row (l-r) Nick Jaramillo '09, Nick Wegleitner '07, Dan Murphy '83, John Carney '10, Michael McCarthy '10, and Michael Eigemann '11.



Up North—Rita Roetelle Meyers '86 and Barb Wanzek Julien '86 enjoyed a summer get-together at the Roettele lake home near Brainerd.

May Wedding—It was a family affair on May 29, 2010, when Katherine Fleischhacker '02 married Garrett Herzig of Norfolk, Connecticut: clockwise, Maria '09, John '05, Mark '70, and Teresa. Other alumni in attendance were Joseph Fleischhacker '72, Joey Fleischhacker '00, Katherine Fleischhacker Roehl '68, Sarah Roehl '01, Karl Riem '03, Justin Riem '05, Jeanne Ferrian '72, Ben Byers-Ferrian '02, Emily Byers-Ferrian '03, Katie Byers-Ferrian '06, Mark Lucke '79, Phyllis Gresser '39, Nicole LeDuc '02.



An Evening Out—Anne Molina Lucas '93, Andrea Scherer Belton '93, Kate McNally '93, Kara Hanrahan '93 and Rachel Kuzma Olson '93 enjoyed time catching up over the summer.



Alum Gathering—The wedding celebration of Mike and Kari Broyles brought together many BSM alumni: back row (l-r) Greg Glarner, Eric Tennessen '90, Derek Schnack '90, Jeff Hillins '90; second row (l-r) Adam Lenhart '90, Bill Kruse '90, Charlie Broyles '90, Mark Loftus '90; front row (l-r) John Knoll '90, Lee Jay Lira '90, Mike Dalton, Pat Emmer, and Jim Migley.

Runners—Alumni Cross Country runners gathered at Basset Creek Park on August 20 for an alumni meet: back row (l-r) Anders Hendrickson '11, Eric Munkeyby '85, Garrett Shaffer '11, Cathy Jewett '75, Maura Daly '82, Marissa Schuh '10, Lauren Muscala '11, Rebecca Twite, Mary Daly Twite '86, Nick Halbert '04; front row (l-r) Brittini Palkert '10, Molly Nelson '10.



RED KNIGHTS IN THE NEWS

Senior **John (Jack) McGinn** earned a top score of 36 on his ACT college admissions and placement exam in September. The College Board says that, on average, fewer than one-tenth of one percent of all test takers earn the top score. Among the high school graduating class of 2011, more than 1.6 million graduates took the ACT. Of that number, just 704 students earned a score of 36. Jack was one of seven Twin Cities metro students to achieve a 36 on the day they took the test. Excited by the news, Jack said, "I'm very grateful for the education I've received from BSM." He added that he felt especially prepared for the reading comprehension portion of the test.



The ACT consists of tests in English, mathematics, reading and science. Each test is scored on a scale of 1-36, and a student's composite score is the average of the four test scores. Students may miss a few questions and still receive a top score, as long as the composite score is a 36. Some students also take ACT's optional Writing Test, but the score for that test is reported separately and is not included within the ACT composite score.

ACT test scores are accepted by all major U.S. colleges, and exceptional scores of 36 provide colleges with evidence of student readiness for the academic rigors that lie ahead.

Jack is considering Harvard, Stanford and Dartmouth as college/university options.

Jack has also excelled as an athlete. He is a two-time All-State swimmer (earning this honor during both his sophomore and junior years in the 200 and 500 freestyle) and is a member of the varsity baseball team.



Senior **Isaiah Gray** was featured as a Pioneer Press Athlete of the Week for football during the week of September 27. The paper noted, "The quarterback rushed for 108 yards on 12 carries and scored on a 20-yard run in the Red Knights' 42-12 victory over Fridley. His TD run came about a minute after Fridley had pulled to within 21-12. Also completed 3 of 4 passes for 47 yards."

Senior football player **Paul Graupner** was selected as the Punter and Kicker of the Week in October by minnesotapreps.com.

The **boys' varsity soccer Red Knights** are the 2011 Class A State Champions. **Boys' soccer coach Dave Platt** was selected as the NSCAA State Coach of the Year for private schools. The state championship victory was his 200th win as a head coach.

The **girls' soccer Red Knights** took all the way to the Class A semi-finals on November 3.

The **girls' varsity tennis team** claimed a conference championship.

BSM has two National Merit Semifinalists this year: seniors **Dan Lundberg** and **Jack McGinn**. Dan and Jack are among approximately 16,000 semifinalists, and will be considered as finalists. We'll hope for that announcement in February. Commended Scholars are **Michael Gerten, Nicholas Hillson, Sam Ingbar, Ian Norman, Benjamin Rosengren** and **Jennifer Vogl**, all seniors.

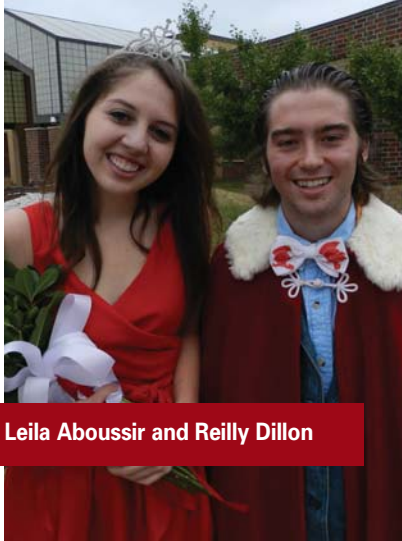
Senior **Dan Lundberg** was chosen as a KARE 11 Academic All Star. A TV story aired on October 10. Dan was selected for the volunteer research work he has done with Dr. Mark Gormley at Gillette Children's Hospital. Dan chose to focus his research on Duchenne Muscular Dystrophy. He discovered that the muscle atrophy and weight loss associated with this condition can be better treated with pulmonary care, rather than nutritional changes, as previously believed. Gillette has already started implementing this new approach to treatment. Dan and Dr. Gormley submitted their research abstract for the American Academy of Pediatrics International Convention in Boston, where Dan presented his findings on October 15. Convention attendees voted Dan's presentation as a favorite, and publishers have expressed interest in including his research in medical journals.



Tim McNiff, KARE 11 TV, Dan Lundberg, Dr. Mark Gormley

Serving as freshman class officers this year are **Blake Castaneda** (president), **Maddy Karlen** (vice-president), **Sofie Scott** (secretary) and **Mary Pat Ross** (treasurer).

RED KNIGHTS IN THE NEWS



Leila Aboussir and Reilly Dillon

Seniors **Leila Aboussir** and **Reilly Dillon** were crowned homecoming queen and king. Other queen candidates included seniors **Katie Cashman, Kate Hinkens, Allie Ison, Taylor Kenyon** and **Grace Ronning**. Fellow king candidates were **Thomas Gilligan, Sanjay Lumpkin, Brendan**

Schember, Kale Walch and **John Worley**. Underclassman attendants on the homecoming court were juniors **Kaitlin Duda** and **Andrew Roeder**, sophomores **Grace Coughlin** and **Eric Wagner** and freshmen **Shannon O'Connor** and **Will Duda**. Emcees for coronation were **Sarah Ehlen** and **Theo Merriam**.

Two Red Knights, current seniors **Dom Burg** and **Thomas Gilligan**, were named by an ESPNHS lacrosse expert who put together lists of the top lacrosse players in the nation, sorted by position. Dom was named the nation's Number 19 faceoff player in the Class of 2012. ESPN stated, "Burg was one of only two juniors to earn All-State first team honors in Minnesota this past spring. Last season Burg won 115 faceoffs and lost just 35. He led the Knights to the state lacrosse title." Thomas was named the nation's Number 15 goalie in the Class of 2012. ESPN noted, "Gilligan helped Benilde-St. Margaret's win its second consecutive state title this past spring, saving 16 shots in the title game as the Red Knights beat Eden Prairie by a 9-3 score."

Senior **Ryan Lawyer** committed to play NCAA Division 1 lacrosse at Lafayette College. He will join BSM alumni **Sean O'Toole '10** and **Zach Silvestri '11** at Lafayette for the 2013 season.

For a second year in a row, BSM's **speech and debate program** has been awarded the National Forensic League's (NFL) prestigious 200 Club award. This means that the students on our speech and debate teams achieved 200 degrees or more last year, and it puts BSM in the top five percent of NFL chapters nationwide.

BSM social studies teacher **Kathy Green** was one of four Minnesota teachers selected to participate in the annual reading and scoring of the College Board's Advanced Placement examinations for AP European History in June.

The College Board selected senior **Frances Jimenez** as a National Hispanic Recognition Program (NHRP) Scholar. The NHRP identifies outstanding Hispanic/Latino high school students. This year, the NHRP is recognizing nearly 5,000 students from a pool of over 235,000. The students who were recognized identified themselves as at least one-quarter Hispanic/Latino. They have achieved a minimum PSAT/NMSQT/PAA score for their region. Scholars have a GPA of 3.5 or higher.



Junior and boy's hockey forward **Dan Labosky** was one of five Minnesota boys chosen for the under-17 U.S. select team that played in the Five Nations tournament, August 9-13, in Ann Arbor, Michigan. Dan and the others were picked from a development camp held in Rochester, New York, in mid-July. Minnesota, with five, was the state with the most players on the 22-player roster. Other teams in the tournament were the Czech Republic, Germany, Slovakia and Switzerland.



Senior **Casey Nightingale** finished as a state runner-up in diving at the Class A State Swimming & Diving Meet, held at the University of Minnesota Aquatic Center, November 17-19. During the season, Casey set new school records for both six-dive and 11-dive meets and qualified as an All-American. Also competing as a state diver was junior **Rachel Thorstenson**, who placed 14th. Nine swimmers competed in the following events: 50-yard Freestyle (junior **Catherine Cole** – 10th place, with new school record of 24.75), 100-yard

Freestyle (junior **Emily Egge** – 9th place and Catherine Cole – 10th place), 200-yard Freestyle (Emily Egge 7th place and junior **Amanda Semler** – 8th place), 500-yard Freestyle (Amanda Semler 7th place and 7th grader **Madison Semler** – 17th place), 200-yard Freestyle Relay (Catherine Cole, Emily Egge, Amanda Semler and sophomore **Megan Pohle** – 6th place, with a new school record of 1:39.28), 400-yard Freestyle Relay (Catherine Cole, Emily Egge, Amanda Semler, and 8th grader **Tru Walor** – team disqualified), 100-yard Backstroke (juniors **Madison Winston** – 17th place and **Amanda Dingman** – 19th place), and 200-yard Medley Relay (Madison Winston, Megan Pohle, Tru Walor and 7th grader **Claire Torgerson** – 13th place).

Sophomore **Lexi Johnson** and junior **Christine Silikowski** earned first place honors at the Hennepin County Fair Talent Contest held June 18. The girls sang a duet from "Wicked," winning both the teen division and the overall. They also performed in the semifinals at the Minnesota State Fair.

Benilde-St. Margaret's

Annual Report

2010-2011

The National Catholic Education Association presented the 2011 St. Elizabeth Ann Seton Award to Warren and Mary Lynn Staley for their support of Catholic education. They are shown with students from Benilde-St. Margaret's (BSM) and Cristo Rey Jesuit High School Twin Cities (CR): Back row (l-r) – Saiku Kanneh (CR), Haley Jerabek (BSM), Victor Mendoza (CR), Adam Bamonti (BSM), Gabriel Morales (CR), Ana Pineda Ponce (CR); middle row (l-r) Nicole Sauer (BSM), Mary Lynn Staley, Warren Staley, Jackson Fortney (BSM); front row (l-r) – Annabelle Amighi (BSM), Isaiah Gray (BSM), Brendan Lee-Gilligan (BSM).



Staleys Receive Seton Award

Warren and Mary Lynn Staley received a 2011 St. Elizabeth Ann Seton Award from the National Catholic Education Association. Benilde-St. Margaret's nominated the Staleys for the honor, which recognizes the Staleys for their support of Catholic education and other philanthropic activities. The award was presented in Washington, D.C., on Monday, October 3.



That's why the Staleys also support Cristo Rey Jesuit High School—Twin Cities in central Minneapolis. Said Mr. Staley, "Hard work and perseverance are fundamental to a student's success in any school, but they are especially important to a Cristo Rey Jesuit High School student, as each has a job. We are proud to support Cristo Rey Jesuit

High School, whose Hire4Ed work-study program provides a Catholic education to families who might not otherwise consider one. Yet, students not only receive a quality, Catholic education, but also four years of professional work experience that prepares them for success in college and life."

"As parents of three BSM students (**Jennifer** '90, **Jeff** '92 and **Chris** '95), Warren and Mary Lynn were regulars at school activities and leaders in the community," said **Bob Tift** '71, BSM president. "Mary Lynn served on our board and was instrumental in the success of our strategic planning process at the time. The Staleys' contribution to Benilde-St. Margaret's supports our tuition assistance program."

"The challenge for every parent is to find the right school that allows each child to grow and become the unique person he or she is meant to be," said Mary Lynn Staley. "We found that for our three children in Benilde-St. Margaret's School. We are pleased to support BSM's ministry of Catholic education that includes faith formation, academic rigor, social responsibility, and preparation to be leaders for a global society."

"We believe Catholic schools do the best job of preparing students to be ethical leaders in whatever fields they choose," said Warren Staley. "That opportunity shouldn't be limited to families from the suburbs."

The Staleys met at Kansas State University (K-State), Manhattan, Kansas. Their family, volunteer and professional pursuits have taken them all over the world. The United Way, Opportunity International, K-State, St. Mary's University of Minnesota, and Habitat for Humanity are among the organizations to which the Staleys have given time, energy and money. Mr. Staley was the CEO when he retired from Cargill, a privately held, international company, in 2007. Since then, the Staleys have devoted their time to family, friends and philanthropic interests.

"We want to share what we have," said Mr. Staley. "We've needed to leave our footprint, wherever we've lived," said Mrs. Staley.



A brief video about the Staleys is posted online, <http://www.youtube.com/watch?v=0yfnFisj1FE>.

Warren Staley joins the crew to build homes.

Table of Contents

Board of Directors	25
Letter from the Board Chair	26
Letter from the President	26
Financial Reports	27
Constituent Rolls	
Parents	28
St. Margaret's Academy	30
Benilde High School	31
Benilde-St. Margaret's School	33
Faculty and Staff	34
Friends	35
Corporations, Foundations, and Organizations	37
Honor and Memorial Gifts	37
A Knight for All Seasons	
Supporters	38

Mission

Benilde-St. Margaret's is a dynamic Catholic learning community which partners with parents/guardians to develop the student's highest potential in mind, body, and spirit. We offer a challenging college preparatory curriculum and a uniquely caring experience that includes faith formation, academic rigor, social responsibility, and extensive extracurricular activities. We educate leaders for a global society.

Vision

Benilde-St. Margaret's will be the school of choice, recognized for developing engaged, intelligent servant leaders.

2010-2011 Board of Directors

Cary Musech
Rodney Jordan
Jerry Gilligan
Sr. Marie Herbert Seiter, CSJ
Fr. Tim Morin
Daniel Cooley
John Feltl
Peter Lawyer
Bill Cottrell
Tom Dillon
Sue Wollan Fan

Vidal Guzman
Tom Hansen
Mary Ann McNeil
Terri Naughtin
Trisha Schirmers
Mary Lynne Perushek
Mike Rogers
John Stemper
Katie Sullivan
Lezlie Taylor
Bob Tift

Please forgive us: While we make every effort to ensure the accuracy of our donor records, we occasionally find errors. If we have omitted, misplaced, or misspelled your name, please accept our apologies and contact us so that we can correct our records.

Please write or call:
Amanda Rothstein
Benilde-St. Margaret's School
2501 Highway 100 South, St. Louis Park, MN 55416
952-915-4341, arothstein@BSMSchool.org



The success of Benilde-St. Margaret's School depends on the combined efforts of students, families, alumni, donors, faculty and staff, administration and the Board of Directors. I'd like to personally thank everyone who is part of the BSM community for our success during the past year.

We recently completed our Raise the Red Capital Campaign, the most successful campaign in our school's history. A special thanks to our many generous donors who contributed to the campaign and who are recognized in this annual report. Because of this campaign we have been able to continue to invest in our students, our academic programs and our facilities despite the challenging economic environment.

A major focus of the administration and the board this year was to develop long-term strategies to maintain the affordability and accessibility of BSM for years to come. Affordability and accessibility will be a top priority as we begin a new strategic planning cycle and lay the groundwork for future capital campaigns.

BSM is a dynamic Catholic learning community, and it has been my pleasure to serve as the chair of the board for the last two years. Our family looks forward to continuing our investment in the BSM community.

Thank you for the opportunity to serve.

Cary Musech
Chair, BSM Board of Directors



Last year, we saw our investment in technology pay off as every student in grades 7-12 began using a laptop. We've redesigned our library to take advantage of online research and information resources. Now, teachers are taking advantage of everything the Internet and Intranet have to offer. Students are becoming more technically literate and prepared for college and life. We're managing our resources by recycling and reducing the use of paper.

With the implementation of the BSM Hour, we added an eighth period to the daily senior high schedule. We completed phasing in the program based on the Catholic bishops' curriculum framework for developing catechetical materials for high school students. We've begun focusing on wellness issues. We've increased the investment in our teaching staff.

Nothing has happened without contributions from you and the support of our board of directors. Thank you. Cary Musech also deserves thanks for his service as chair of the BSM Board of Directors.

When Cary took the gavel, we were in the midst of the Raise the Red Campaign. Despite difficult economic times, he was a champion for our FirstFund (Annual Fund), and encouraged us as we worked to make BSM affordable through tuition assistance. On his watch, we've seen the preservation of our environmental footprint and the completion of the newly dedicated McQuinn Athletic Complex.

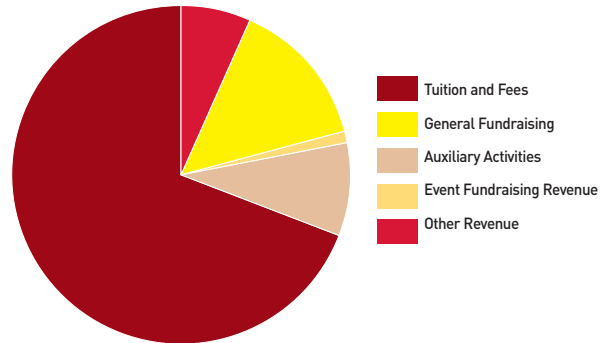
Rodney Jordan now holds the gavel as we begin the next chapter in BSM's history. The board will help guide BSM through our next strategic planning process and develop a vision for 2020. With the community's support and enrollment very near capacity, we're on the right foot.

Sincerely,

Bob Tift '71
President

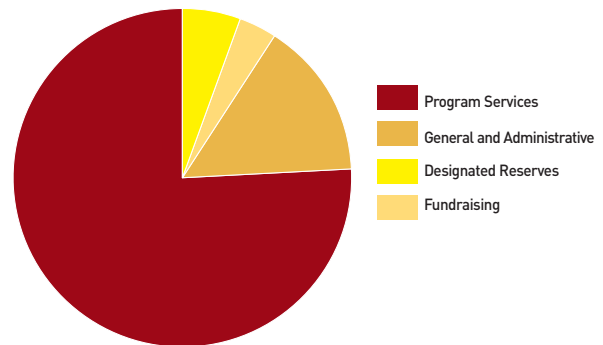
Operating Income

Tuition and Fees	\$ 12,617,884
General Fundraising	\$ 2,591,353
Auxiliary Activities	\$ 1,632,421
Event Fundraising Revenue	\$ 219,867
Other Revenue	\$ 1,233,940
Total	\$ 18,295,465



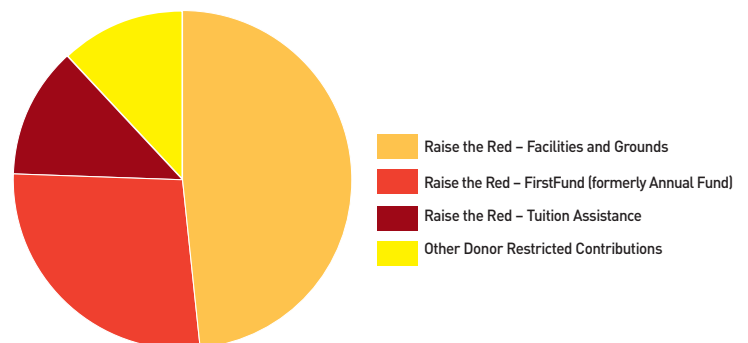
Operating Expenses

Program Services	\$ 13,833,132
General and Administrative	\$ 2,771,311
Designated Reserves	\$ 1,032,220
Fundraising	\$ 658,802
Total	\$ 18,295,465



Designations of Fundraising Donations

Raise the Red – Facilities and Grounds	\$ 1,257,154
Raise the Red – FirstFund (formerly Annual Fund)	\$ 706,687
Raise the Red – Tuition Assistance	\$ 321,323
Other Donor Restricted Contributions	\$ 306,189
Total	\$ 2,591,353



Giving Societies

The following pages summarize the individual philanthropic donations received by the development office between July 1, 2010, and June 30, 2011. The list details all cash and in-kind gifts given to the FirstFund, to endowed and capital funds, to student scholarships, and to specific departments, programs, or student activities. We celebrate the contributions of our philanthropic partners with recognition at the following giving levels:

Honorary Level

Gifts of \$50,000+

President's Level

Gifts of \$25,000+

Founder's Level

Gifts of \$10,000+

Veritas Level

Gifts of \$5,000+

Patron's Level

Gifts of \$2,500+

Benefactor Level

Gifts of \$1,000+

Red Knight Level

Gifts of \$500+

Builder's Level

Gifts of \$250+

Century Level

Gifts of \$100+

Contributor

Gifts up to \$99

Parents

In addition to supporting their children through financing their education, many parents make a philanthropic gift to Benilde-St. Margaret's. We salute the parents of students enrolled during the 2010-2011 school year who invested generously in the school. They are listed here by giving level.

Honorary Level

Anonymous

President's Level

Kim and Carol Culp
Paul and Kathryn Ehlen
Jerome and Patricia Gilligan
Jack and Kate Helms
Tonya Puckett
Stephen and Karen Sanger
Perry and Anne Schmidt

Founder's Level

Archie Black and Jane McDonald Black
Edward and Judy Cannon
James and Mary Cron
Joseph and Stephanie Fitzgerald
Alan Geiwitz and Mary McMahon
Joseph and Jone Hafermann
Matthew and Jacqueline Haughey
Robert Huber and Christine Solso
Stephen Imholte and Rachael Scherer
Peter and Monica Lawyer
Rudy and Cathy Luther
Michael and Kelly Meyer
Cary and Regina Musech
Thomas and Andrea Oden
John and Barbara Reis
Thomas and Gina Sprenger

Veritas Level

Daniel and Mary Ambre
John and Cheryl Besse
Joel and Alexandra Cannon
Richard and Teri Corbett
Daniel and Janet Dryer
Brian and Susan Dunn
Al Fan and Susan Wollan Fan
Joseph and Shelly Hoesley
Rodney and Laura Jordan
Thomas and Sheila Letscher
Michael Lindsay and Judee Arnstein
David and Kristine Overman
Patricia Ronning
Larry Semler and Karen Dorn
Joseph and Deann Speltz
Bob and Anna Tift
Karl and Teresa Tourville
John Tyhacz and Megan Reid
Douglas and Margaret Williams

Patron's Level

Anonymous
Lori and Russell Anderson
Steve Anderson
Scott and Elizabeth Birney
Michael and Lisa Doyle
Christopher and Norah Gondeck
Mark and Rosemary Guidinger
Thomas and Kelley Gunkel
Edward and Laureen Kernan
Ric Lager
John and Nancy Lawlor
Joseph and Byoung Lee-Gilligan
Christopher and Joan Lyon
Michael and Frances McCloskey
Bernhard and Victoria Nann
Nigel and Jean Nightingale
Scott and Peggy Oppenheimer
Michael and Mary Perushek
Michael and Lisa Reilly
David and Susan Roberts
Steven and Jeanne Rosengren
Peter and Geri Scherer
Mark and Heather Scherer
David and Rosemary Tobelmann
Mark and Sarah Winston

Benefactor Level

Randy Ahlm
Steven and Laura Alexander
Greg and Lisa Appelhof
Michael and GERALYN Barone
Randy and Marcy Betcher
Durand and Renee Burns
Robert and Marney Buss
Ben and Patti Campbell
Scott and Louann Carpenter
Douglas and Pamela Christensen
Scott and Michele Conlon
Kevin and Maristel Conry
Jay and Terri Cope
John and Caron Dwyer
Mark and Lynn Eckertine
Ann Rukavina Fleming
Thomas Forsythe and Anne Ames-Forsythe
Ted and Mary Freese
David and Miriam Gannon
Richard and Mary Helen Gill
Howard Grodnick and Melinda Jacobs-Grodnick
Neal and Julie Guggemos
Hans Hagen
Clay and Charlotte Hoes
Gregory and Kelli Hueler
Thomas and Renee Keller
William and Nancy Kenyon
Mark and Therese Koller
James and Mary Kay Kopp
Bradley and Jean Lance
Thomas and Candy Link
James and Carrie Lundberg
Todd and Tiffany Madden
Frank Magill and Margaret Burns Magill
William Marinelli and Christine Cox-Marinelli
Michael and Carrie Martino
Daniel and Jeanne McCarthy
Michael and Katie McElroy
Mitchell and Jan McMillen
Timothy and Carol McShane
Mark and Cindy Melin
Mark and Theresa Melles

Patrick and Amy Minea
Terrance and Anne Moore
Patrick Morrissey and Diana Young Morrissey
Bill and Melinda Muenzberg
Bill and Jennifer Mullin
Jeffrey and Terri Naughtin
Thomas Nelson and Kathryn Pyzdrowski
Julie and Chris O'Leary
Stephen Oman and Aimee Hreha
Christopher and Nancy Patton
Joseph and Patricia Pupil
Michael and Jennifer Qualen
David and Karen Quinby
Michael Rogers
Jon and Jennifer Salveson
John and Theresa Santelli
George and Diane Schember
Kristopher and Georganne Scherer
Mark and Elena Sifferlin
Robert and Diane Slayton
Jason and Patty Studsrud
James and Caroline Tumini
Thomas and Nancy Wallrich
Kevin and Michelle Weber
Jeffrey and Carol Wendt
Robert and Susan Wolf
Warren and Margaret Zaccaro
Michael and Elissa Zeman

Red Knight Level

William and Laurie Beise
Mark and Jennifer Biglow
Alan and Jennifer Bowman
David and Katherine Bromelkamp
Phillip and Mary Jo Cole
James Commers and Catherine Flaherty
Terrence Diaferio
Kevin and Kimberly Dickison
Michael and Kathleen Docter
John and Sarah Dritz
Jeffrey and Kristin Evanson
Richard and Kari Forschler
Mark and Maureen Frank
John and Patricia Gordon
David and Sheryl Greening
Matthew Griebie and Jeannie Larson
Thomas and Kim Hayes
Michael and Kristina Herbst
Mark and Terry Holten
James and Sarah Jacobs
Paul and Mary Johnston
Daniel and Therese Kosch
Mark and Sheila Kraemer
Andrew Krane and Amy LeJeune Krane
Patrick Krieger and Jennifer Ott Krieger
Michael and Ellen Lamb
Dietrich and Corinne Lawrenz
Sean and Tracy Lumpkin
William and Lisa Lundberg
David Lynch and Sue Ravenscraft Lynch
Scott and Ann McCague
Andrew and Ann McGinn
Patrick and Lori McTigue
John Meeker and Kitty McClintock
Jean Miller
Richard and Nancy Perrine
Thomas and Diane Philbin
Kenneth Piper and Ann Ashton-Piper

Robert and Roxanna Plouff
James Pohle and Susan Eich
Daniel Raether and Susan Gunderson
Daniel and Laura Robbins
Randall and Gail Ross
Julie Rouse
Leonardo Saavedra and Marisol Vera
James and Tika Shah Petersen
Maureen and Craig Shaver
Steven and Deborah Simmons
Dean and Janet Sparkman
Lester and Kristin Stanley
Bradley Theisen and Marci Mueller Theisen
David and Victoria Vandersteen
Gregg and Karen Waldon
David and Lisa Walsh
Mark and Pamela Whitmore
James Youngblut and Brenda Roth
John Zattoni and Lynette Wheelock

Builder's Level

Marc and Molly Anderson
Michael Bamonti
Paul Blake
Mary Blake
Christopher Borer
David and Sally Brinza
Michael and Sally Carey
Michael Clark and Mary Jane Chiasson
Kari Conway
Dean Deutz
Kevin and Kathleen Dillon
Scott Effertz and Angie Arens
Kenneth and Tenley Fasola
Daniel and Susan Gallaher
Mike and Tracy Gardner
Milton and Margaret Gardner
Julie Grey
Thomas and Jill Hansen
Alicia Heck
William Hudlow
Shane and Kris Huether
James and Maureen Johnson
Todd and Jennifer Johnson
Paul and Jodell Keefe
Peter and Jocelyn Knoll
Roman and Nancy Kozak
Robert and Catherine Kruse
Mark and Karen Larson
Theresa Lebahn
Michael and Cynthia LeJeune
Douglas and Pamela Lundell
Nancy and Wade Lykkehoy
Peter and Colleen Mavroulis
Robert and Mary McNeil
Alan and Mary Meuwissen
John and Constance Nagel
Richard Papetti
Stephen and Brenda Peterson
Jerry Pettinger and Nancy Mischel
Christopher and Mary Riley
Wayne and Cassandra Robinson
Jon and Maureen Segner
Carl and Connie Shaffer
Bruno and Diane Silikowski
Gregory and Rebecca Silvestri
Don and Annie Smithmier
Damian and Rosemarie Topousis
James and Whitney Tucker
Patrick and Cheryl Welch
Jeffrey Wertz and Teresa Litfin-Wertz
Paul and Kristi Jo Williams
John and Mary Worley

Century Level

Anonymous
Kate Aanestad
Jonathan Aanestad
Jeffrey and Kathy Adamson
David and Paula Anderson
Lee and Katherine Arostegui
Daniel and Lisa Basil
John and Comfort Belbas
Dan and Nancy Berend
Nancy Blessing
Michael Brown and Maggie Pyzdrowski
Veronica Campion
Thomas and Patricia Castaneda
Richard and Kristen Cawood
Kevin and Gloria Charley
Mark and Jeannine Clancy
John and Brenda Coleman
Paul and Corrina Conley
Gregg and Laura Cullen
Patrick and Michelle Daly
Susan Dammen
Marvin and Margaret Danielski
Thomas and Lindi Dillon
Scott and Elizabeth Dorn
Jerry and Nancy Driessen
Harry and Julia Edelman
Timothy and Cynthia Ehlen
Richard and Michelle Faber
Jay Fleming and Jean Paltzer-Fleming
Patrick and Lynne Foy
Sheila Gales
Daniel and Andrea Gionet
John and Jane Goodrich
John and Nancy Greer
Vidal Guzman and Lidibette Rosado-Guzman
Patrick and Sue Hamilton
Robert and Kristen Harnett
Gregg and Carolyn Herrmann
Jon and Renee Hickman
Jay and Lisa Hollenback
Leonard and Barbara Hones
James and Kim Horton
John Ibele and Monica McNaughton
Timothy and Carol Jewett
Christopher and Sheila Jones
Richard and Sally Karlen
Peter and Mary Kay Keers
Ray and Amy Kelly
Andrew and Tricia Kinney
David and Debra Kloyda
Christopher and Sheri Koch
Steven Korts
Marc Krumholz
James and Mika Kunz
Richard and Leslie Kupchella
Michael and Linda Laak
John and Julie Labosky
Kirsten Lemke
Daniel and Marian LeSage
Scott Lichliter and Nancy Hays
Kirk and Kari Lundeen
Anthony and Sujata Massey
Michael and Michelle Matthews
Terence and LuAnn McCormick
James and Debra McGill
John and Carol McLain
Curt and Lynette McLeod
Kevin and Aileen McNew
Theodore and Laura Merriam
James Michels
Mark and Lynn Myhra
Jeffrey and Laura Olejnik

David and Debbie Paquette
Bradley Peterson
Mark and Rhonda Pirkel
Christian and Elizabeth Preus
Jeffrey and Amy Roe
Steven and Jennifer Roth
John and Linda Sauer
Patrick and Ann Sauer
Gregory and Patricia Schwartz
Randy Shaver and Roseann Giovanatto-Shaver
Daniel Sheran and Nancy Bigham-Sheran
James and Carolyn Sina
Richard and Colleen Stephens
Vernon and Debra Stowe
Stephen and Caroline Stroh
Patrick and Lisa Sullivan
Rick and Molly Torrance
Steven and Elaine Valerius
Bryan and Pamela Vertina
Selwyn and Janice Vickers
John and Ann White
Craig Wildfang and Christine Honaas
Julie Yedoni-Melbye and Steve Melbye
Christopher and Lori Zeman

Contributor

Lori Anderson
Frederick and Carol Arnason
Michael and Karen Bjorgan
Karen Black
Mary Clinton
Earl and Jennifer Cutter
Thomas and Bridget Davis
John and Jean Dillon
Rolf and Soroya Erickson
Charlie and Laura Feld
Mark and Deborah Flannery
Daniel and Catherine French
Peter and Karen Galvin
Diane Ganz
Tyent Germa
Duane and Renee Hamilton
Robert and Monique Hathaway
Barry and Rebecca Hogen
Suzanne Jimenez
Todd and Jan Johnson
Mark and Dawn Kincs
Michael and Ann Koplín
Todd and Liz Krough
James and Erika Langford
Jefrey and Sally Lundquist
Glenn and Channon MacEachern
Nelly Maziji
Brian and Kristin McBride
Vicky McMillan
Daniel and Angela Meshbeshier
John and Debbie Miller
Thomas and Jeanne Morizio
John O'Connor
Mary O'Meara Gillespie
Ricardo and Mary Ortizcazarín
Chris and Ann Ossanna
Michael and Julie Ortler Palach
Jeffrey and Laura Peck
Jesse and Doreen Puhl
Christopher Roman
Matthew Schumacher
Kevin and Paula Sonsalla
Sandra Sullivan
Paul and Mickey Thaden
Casey and Mary Whelan

Alumni

We are grateful for the contributions of our alumni from St. Margaret's Academy, Benilde High School, and Benilde-St. Margaret's School. They are listed in alphabetical order by class, giving level, percent of participation and giving total.

St. Margaret's Academy Alumnae

1931	2%	\$100	1944	8%	\$115	1951	22%	\$1,029	<i>Contributor</i> Ann Pope Burgoyne Susan Meloche Hansen Patricia Schupp Hart Mary Holland McNeil Judy Miller Bonnie O'Connor Charlene Meuers Odland Mary Burgoyne Panchot		
<i>Century Level</i> Lucille Connolly Hartwig			<i>Contributor</i> Audrey Johnson Hillenbrand Marilyn Theisen Marben Mary Young Ruff Dorothy Wyant, CSJ			<i>Century Level</i> Donna Hansen Davidson Mary Jean Borovsky Porter Frances Moore Shima Barbara Dibos Turnbull			<i>Contributor</i> Ann Brady Andersen Sharon O'Neill Barrett Kathleen Langner Fike Maxine Eckes Gau Anne Gibbs Adrienne Ouellette Harty Audrey Esterley Jarosh Lois Kranz Kottke Claire Hessburg Kriz Alice Maas Langer Muriel Riviere Olson Claire McDonald Redmond Mary Sullivan Riley Louverne Noble Williams Barbara Buckner Wilmes		
1933	2%	\$10	1945	6%	\$185	1952	15%	\$2,005	1956	29%	\$1,260
<i>Contributor</i> Marion Dahlheimer Williams			<i>Century Level</i> Shirley Gadbois Clasen <i>Contributor</i> Marilyn Dugan Emond Mary Doyle Roby Margaret McClellan Thompson			<i>Benefactor Level</i> Anonymous <i>Red Knight Level</i> Lorraine Michaels <i>Century Level</i> Georgianne Kopp Kobbe Kathleen Siede Nelson <i>Contributor</i> Kathleen O'Malley Anderson Irene Colston Anna Mrsich Glynn Phillippa Gleason Lindquist Dorothy Buchanan Lodahl Patricia Herbert O'Malley* Janice Pull Peters Sister Marilyn Schlosser, OP Patricia Coulombe Thompson			<i>Century Level</i> Anonymous Judy Reynolds Best Mary McHugo Burgess Mary Cowan Mary Ann MacNeill Decaen Dianne Markell DeMarco Mary Romaniak DeWitt Roselyn DeLisi Glenn Cecelia Anderson Kes Mary Hoag Marty Carol Lundby Northenscold Mary White O'Shaughnessy Nancy Mayer Riley Margaret Ascher Roback Marilyn John Schaaf Carol Bushard Scheller Jean McMullin Shannon Karen Swan Slaney Mary Fust Stedman Kathryn Martin Stoddart Mary Ann Oeffling Suttle Carol Renckens Torborg Martha Marrin Wilczyk Patricia Spelbrink Zierden		
1935	2%	\$50	1946	11%	\$415	1947	11%	\$420	1957	6%	\$805
<i>Contributor</i> Marie Torborg O'Gara			<i>Century Level</i> Weltha Logan Lavonne Mertens Skelton <i>Contributor</i> Patricia Giessel Coleman Mary Mahoney Crowley Eileen Dohney Freeman Patricia Trappmann Hnath Patricia Forte Martin Mary Harrer Rode			<i>Century Level</i> Mary Joan Tracy Larsen <i>Contributor</i> Rosemary Seledic Adams Mary Alice Juettner Hargarten Mary Hynes Huttner Marianne Jenkins Johnson Shirley Emery Keyes Rosemary Conlin Lentsch Virginia Martin Morris Gloria Saunders Wahl			<i>Century Level</i> Kathleen Gorman Grendahl <i>Contributor</i> Joanne Hastings Jackson Barbara Swanson Johnston Mary McAndrews Martin Kathleen Boulton Nelson Patricia Dooley Solie		
1936	2%	\$100	1947	11%	\$420	1948	1%	\$20	1958	8%	\$1,070
<i>Century Level</i> Marion Martin Colby			<i>Contributor</i> Mary Joan Tracy Larsen <i>Contributor</i> Rosemary Seledic Adams Mary Alice Juettner Hargarten Mary Hynes Huttner Marianne Jenkins Johnson Shirley Emery Keyes Rosemary Conlin Lentsch Virginia Martin Morris Gloria Saunders Wahl			<i>Contributor</i> Jean Maas Ward			<i>Builder's Level</i> Catherine Gillespie Dooley Mary Lidholm Stelzer <i>Century Level</i> Sharon Wright Kierski Patricia Ostmo Mary Ann McDonald Perry <i>Contributor</i> Sharon Fitzgerald Eileen Sullivan Hedberg Kathleen Kampa Marturano Virginia Delisi Meuers		
1937	2%	\$50	1948	1%	\$20	1949	16%	\$11,290	1959	4%	\$225
<i>Contributor</i> Patricia Cavanaugh Moran			<i>Contributor</i> Jean Maas Ward			<i>Founder's Level</i> Jean Wallerius Hanson <i>Red Knight Level</i> Yvonne Hentges Peterson <i>Century Level</i> Phyllis Gleason Fabiny M. Kathleen Dougherty Leisz Mary Marrin Killalea Evelyn Fisch Lausen Geraldine Johnson Leonard <i>Contributor</i> Maureen O'Neill Enger Judith Blade Gross LaVerne Bendtsen Kintop Betty Steinbach Nordlund Joan Stahmann Skorstad Rose O'Donnell Wetterman			<i>Century Level</i> Roberta Hartel Reeves <i>Contributor</i> Rita Lorbeski Bennett Judy Hoff Heckmann Patricia Lordan Kernan		
1938	6%	\$170	1949	16%	\$11,290	1950	16%	\$860	1960	24%	\$1,400
<i>Contributor</i> Lorraine Hessburg Breitenbucher Mary Margaret Boyle Cassidy Dorothy Waldmann Gruidl Mary Shallbetter Raker			<i>Founder's Level</i> Jean Wallerius Hanson <i>Red Knight Level</i> Yvonne Hentges Peterson <i>Century Level</i> Phyllis Gleason Fabiny M. Kathleen Dougherty Leisz Mary Marrin Killalea Evelyn Fisch Lausen Geraldine Johnson Leonard <i>Contributor</i> Maureen O'Neill Enger Judith Blade Gross LaVerne Bendtsen Kintop Betty Steinbach Nordlund Joan Stahmann Skorstad Rose O'Donnell Wetterman			<i>Century Level</i> Dolores Schaefer <i>Contributor</i> Karol Meunier Dayton Mary Ann Gillespie Kathleen McGraw Gretsch Sheila Mullin Manley Mary Ellen Irving O'Brien Rita Wallerius Stevens Annette Freese Wahl			<i>Builder's Level</i> Kathleen Miller Mulroney <i>Century Level</i> Rosemary Bolanda Cobb Judith Merchant Nelson Rose Ann Vogt Rosemary Wrzos		
1939	6%	\$75	1950	16%	\$860	1951	22%	\$1,029	1960	24%	\$1,400
<i>Contributor</i> Margaret Franzen Getty Phyllis Gresser Clarice Wolfgang Wick Mary Kilkelly Wolter			<i>Century Level</i> Rosemarie Fish Chyrklund Susan Erlougher Sicora Helen Stone Maxine Johnson Zappa <i>Contributor</i> Patricia Weicherding DeLisi Veronica Mortl Fashant Barbara Loesch Funk June Ess Hiller Margaret Campion Jaeger Lois Schumacher Montague Claire Nagel Ready Carol Wren Shallbetter			<i>President's Level</i> Ann Liemandt Cronin <i>Benefactor Level</i> Marie Herbert Seiter, CSJ <i>Builder's Level</i> Colleen Steinhauser Foley Louise Peterson Jacobs					
1940	2%	\$50	1951	22%	\$1,029	1952	15%	\$2,005	1960	24%	\$1,400
<i>Contributor</i> Marian Chandonnet Pec			1952	15%	\$2,005	1953	13%	\$810	1960	24%	\$1,400
1941	2%	\$25	1953	13%	\$810	1954	9%	\$310	1960	24%	\$1,400
<i>Contributor</i> Rita Huch Levy			1954	9%	\$310	1955	12%	\$26,670	1960	24%	\$1,400
1942	10%	\$1,290	1955	12%	\$26,670	1956	29%	\$1,260	1960	24%	\$1,400
<i>Benefactor Level</i> Eileen Savage-Hunt Trust* <i>Century Level</i> Colleen Stafford Boone Jeanne Jameson Dougherty <i>Contributor</i> Patricia Hoy Orth Kathryn Smith			1956	29%	\$1,260	1957	6%	\$805	1960	24%	\$1,400
1943	4%	\$55	1957	6%	\$805	1958	8%	\$1,070	1960	24%	\$1,400
<i>Contributor</i> Dolores Feltl Johnson LaVergne Dahlheimer Raskob			1958	8%	\$1,070	1959	4%	\$225	1960	24%	\$1,400

Contributor
 Kathryn Hansmann Anderson
 Gail Retka Angiulo
 Kathleen Locke Bell
 Jane Fischer Clarke
 Michele Peters Copperud
 Joan Dechaine Dahlin
 Mary Dale-Coutu
 Barbara Etzel
 Patricia Toohey Flaherty
 Mary McGuire Forpahl
 Carron Gutwinski Graf
 Rose Holland Linnihan
 Maryann Alverson Leonard
 Carol Piazza Marnell
 Diane Skaar Marrin
 Judith Merchant Nelson
 Jacqueline Rowland Notaro
 Mary Canfield Pierce
 Mary Beth Olson Spring
 Sharon Riebel Zappa

1961 9% \$745

Century Level
 Anonymous
 Joanne Berger Lewis
 Marilee Woehning Miller
 Jeanne Warner Nelson
 Mary Knauff O'Hare
Contributor
 Kathleen Mart Brom
 Mary Baker Doshan
 Lucia Eckes Leck
 Theresa Killen Little
 Rita Dancik Shomonta
 Katie McKenna Smith

1962 10% \$11,269

Founder's Level
 Mary Lou Fleetham Pointner
Builder's Level
 Barbara Hartwig Castaneda
Century Level
 Virginia Moore Glenn
Contributor
 Janet Johnson Anderson
 Patricia Davies Bohm
 Patricia Regan Johnston
 Joann Prasky Lewandowski
 Mary Catherine Longley
 Marcia Lundin
 Margaret McGonagle
 Nancy Petroske
 Patricia Steffens Rusch
 Mary Schmitz Scanlon

1963 6% \$1,380

Benefactor Level
 Wanda Archer Weller
Century Level
 Carol Quigley Kerr
 Kathleen Kretsch Wanner
Contributor
 Gloria Becchetti
 Mary Ditzler
 Rita McHugo
 Janet Law Michels
 Pamela Manders Vosika

1964 3% \$475

Century Level
 Nancy Judd Magnusson
 Karen Kreutzian Van Slyke
Contributor
 Susan Born Conner
 Mary Diercks
 Cheryl Commers Hanks

1965 6% \$1,675

Builder's Level
 Mary Yule Jelinek
 Mary Ann Kraus Ramroop
 Celeste Blum Shahidi

Century Level
 Gail Poot Bertossi
 Patricia Hoverman Johnson
 Kathleen Williams Nordstrom
 Vicki Selner
Contributor
 Jeanne Siemers Amonson
 Margaret Coleman Gadiant
 Cheryl Bohenstingel Langsweirdt
 Susan Gorman Lesberg
 Barbara Dodds Olson
 Susan Caspers Poetzel
 Marsha Thole
 Cassandra Seifert Tyler
 Mary Kay Warner

1966 3% \$395

Century Level
 Juliann Adelmann L'Herault
 Debby Brennan Townley
Contributor
 Mary Jahnke Anderson
 Marie Agasie Bender
 Patricia Andrescik Jorgenson
 Mary Andrescik Mitchell
 Sharon Rehman Smieja
 Jean Hass Tuohy

1967 8% \$2,410

Benefactor Level
 Bonita Kozub Frels
Red Knight Level
 Mary Seiwert Periolat
Century Level
 Jane Harrigan Bresnahan
 Patricia Calder
 Susan Fashant Daniewicz
 Patricia Russell Evans
 Joy Peria
Contributor
 Diane Dwyer Brand
 Mary Jane Cooper Corso
 Kathleen Clarkin Foley
 Kathryn Knapp Hanz
 Nancy Grendahl Huntley
 Christine Larson
 Joanne Carmody Meierhofer
 Mary Nelson Schroeder*
 Linda Schutz
 Kathleen Shaughnessy

1968 8% \$10,300

Veritas Level
 Virginia Lupo
Patron's Level
 Patricia Casanova
Benefactor Level
 Teresa Graham
Builder's Level
 Kathleen Reger
Century Level
 Jenifer Stein Fortin
 Nancy Swanson Kaplan
 Melinda Pattee
Contributor
 Mary Andresen
 Lauren Law Dvorak
 Jeanne Pyzdrowski Fraune
 Carol Kowal Gallivan
 Colleen Kemper Garland
 Shari Tift Hargrave
 Maureen Arms Johnson
 Mary Beth Ferrian Liekhus
 Deborah Grones Nelson
 Charlene Keefer Pomerleau
 Rosemarie Romportl
 Patricia Egan Skaja

1969 7% \$930

Builder's Level
 Margaret Arms Burt
Century Level
 Barbara Commers

Janine Marceau
Contributor
 Mary Bochnak
 Mary Jo Nelson Brumbaugh
 Bridget Callaghan
 Joan Bach Daems
 Tania DeLaTorre
 Diane Donahue Holker
 Patricia Hynes
 Sharon Hromatka Johnson
 Patricia Ziemer Mack
 Susan Feltes Moore
 Katherine Murray
 Kay Lahr Parker

1970 9% \$3,292

Benefactor Level
 Patricia Pottner Latsch
Red Knight Level
 Eileen Janas
Builder's Level
 Patrice Speeter Beddor
Century Level
 Pamela Egan Blahna
 Marguerite Schultz Burke
 Patricia Burke
 Diane Grendahl Stoddard
Contributor
 Janet Kaster Broin
 Kathleen Casanova-Johnson
 Cynthia Schweitzer Chandler
 Coleen Kosloski
 Kathy Grace Miller
 Mary Lepsch Nelson
 Karen Wivinus Price
 Ellen Graham Renfroe
 Nancy VanVorst Toth
 Anne Wilwerding Truax

1971 8% \$1,780

Red Knight Level
 Michele Dumas
Builder's Level
 Diane Battaglia Beddor
 Mary Ann McNeil
Century Level
 Monica Brinkman Blackman
 Catherine Calva Cather
 Jane Lundeen Goodrich
 Susan Gustafson Jensen
 Colleen Keenan Wynne
Contributor
 Mary Boucher-Schell
 Anita Vakoc Brand
 Barbara Ferrian Munnely
 LuAnne Speeter
 Linda Myers Vierkant
 Mary O'Rourke Wickersham

1972 6% \$1,928

Benefactor Level
 Diane Egan Slayton
Builder's Level
 Cynthia Burke Rodahl
Contributor
 Lynn Choromanski
 Jeanne Ferrian
 Stephanie Bettlach Hokenson
 Reyna Brown McLean
 Barbara Volp Pearson
 Ellen Dwyer Schnobrich

1973 4% \$275

Century Level
 Michaela Diercks
Contributor
 Janet Lucas Enerson
 Beth Delmonico Gloppen
 Mary Kemp King
 Mary Christine Cella Nunez

1974 4% \$805

Builder's Level
 Theresa Volp Lebahn
 Mary Lou Dolan Thue
Contributor
 Katherine Bolter Hickman
 Moira White Kennedy
 Jane Choromanski Norris

Benilde Alumni

1959 8% \$1,150

Red Knight Level
 Robert O'Hara
Century Level
 Patrick McCarthy
 Frank Spinner
Contributor
 Joseph Cain
 Michael O'Halloran
 Thomas Rerah
 Jerome Seppelt
 Patrick Stubbs

1960 9% \$1,905

Red Knight Level
 Thomas Foss
 George O'Leary
Builder's Level
 Michael Mulvaney
Century Level
 Robert Olsen
 Robert Shields
Contributor
 Robert Andrews
 Garrett Benner
 Dennis Corcoran
 Joseph Daly
 James Delaney
 Joseph Lampe
 Gerald Linnihan
 Robert Pelant
 John White

1961 11% \$2,905

Benefactor Level
 Gary Scherer
Builder's Level
 Michael Sexton
 Thomas St. Martin
Century Level
 Calvert Busch
 James Heiland
 Dick Jones
 Fritz Kokesh
 John Roers
 Lawrence Smith
 Robert Walsh FSC
Contributor
 Roger Carlson
 William Daly
 Gerald Goblirsch
 Michael Hassing
 Charles McGinty
 Michael Merriam
 Scott O'Brien
 Michael Petschl
 John Ryan
 Martin Strong

1962 10% \$3,400

Benefactor Level
 Thomas Malia
 Ronald Risvold*
Builder's Level
 John Kretsch
 John McKeon

Century Level
Gerald Bauer
Patrick Cady
Richard Finke
Jerome Johnson
Harvey Johnston
James Sharpsteen
Contributor
David Evans
David Gagne
Joseph Michels
Kirk Nelson
Michael Peterson
Michael Quinn
Robert Sturm

1963 7% \$1,940

Benefactor Level
Michael Scherer
Builder's Level
Richard Ahlstrom
Century Level
James McNearney
Michael Mika
Michael O'Keefe
Thomas Sieg
Contributor
Robert Baltes
Robert Johnson
Frederich Juettner
Lee Munnich
Charles Rice
Thomas Walsh
Terrence Williams

1964 12% \$5,025

Benefactor Level
Benjamin Gudden
James O'Meara
Builder's Level
Martin Christiansen
James Flick
Century Level
Lester Breuer
John Broback
Richard Evans
Bert Notermann
Frank Schwab
Alexander Wilson
Contributor
Michael Bailey
Douglas Barber
Donald Batteen
Dennis Beltrand
Michael Bertrand
James Carufel
Paul Frank
William Gilbreath
William Gorrill
Thomas Juergens
Kevin Keymer
Dean Perra
D. Michael Pratt
Darryl Smith
Robert Verkennes
Dennis Whalton

1965 10% \$12,719

Founder's Level
John Fleischhacker
Builder's Level
Patrick Christiansen
Robert Dolan
Timothy Dooley
James Lucas
Century Level
Thomas Commers
Randall Hanson
Peter Huber
Richard Johnson
Robert Kressel
Richard Peterson

Contributor
Daniel Babcock
Greg Bartel
Ralph Bistodeau
Mike Frank
David Gottschalk
Ed Hromatka
James Kaster
Thomas Kelly
Gary Laumann
James Liddy
James McCaffrey
Jeffrey Mork
Charles Percival
James Rhoades
James Rinck
Richard Rosow
Steven Setzer

1966 8% \$12,025

Founder's Level
Robert M. Short
Red Knight Level
Lawrence Grubryn
Builder's Level
James Burt
John Degnan
Century Level
John Dupont
Michael LaVigne
Donald McDonald
John Mulcahy
Contributor
Douglas Berg
Thomas Dahl
James Deurr
John Elsen
Stephen Jacobs
Daniel Kelly
Pete Lundin
Ernest Palmsten
David Sebald

1967 7% \$1,845

Builder's Level
Kenneth LeVoi
Paul Vetscher
Century Level
John Cretzmeyer
Timothy Cuddigan
Robert Finke
David Illies
James Johnson
Gregory Paquette
James Rockwell
Patrick Sauter
Contributor
Jon Cieslak
Patrick Gerber
Charles Knaeble
Gregory Mack
Michael O'Donnell
Gregory Welter
Thomas Wozniak

1968 11% \$5,502

Benefactor Level
David Dent
Red Knight Level
David Moser
Thomas Vetter
Builder's Level
David Blake
Thomas Horner
John Lamb
Jim Steger
Century Level
Thomas Clancy
John Decker
Brad Deering
Robert Fox
Ronald Heinz
Charles Higgins

Thomas Miller
Maximillion Wexler
Contributor
Gregory DeGonda
Stephen Diercks
Thomas Ferber
Hugh Hanson
John Hoffman
David Hoffmann
William Leach
James Mader
Joseph McKasy
Stephen Noack
Timothy Perry
Timothy Plant
Kevin Schwab

1969 10% \$21,920

Veritas Level
Robert Moore
Patron's Level
Doug Cooley
Thomas Gilligan
Loren Laskow
John Lawlor
Benefactor Level
Frederick Ferron
Red Knight Level
Dennis Clifford
Timothy Grosscup
Builder's Level
Brian Beddor
Michael Gozola
Michael Mitchell
Century Level
Tom Keegan
John Pallanch
Douglas Paquette
Paul Stahler
Contributor
Edward Finklea
David Keymer
Thomas Kretsch
Peter Meade
Bradley Mitchell

1970 11% \$32,395

President's Level
Mark Fleischhacker
Patron's Level
Mark O'Malley
Benefactor Level
Joseph Margarit
Red Knight Level
Michael Duffy
Michael Dukinfield
John Reger
Century Level
John Henrich
Mike Larkin
Steven Mattaini
David McCullum
Scott Offerman
Neil Trembley
Contributor
Patrick Coleman
Robert Cramer
Keith Kowalsky
Edward Krmpotich
Joseph Liberko
Steven Mundy
Philip Ochs
James Raker
Dana Soroko
Timothy Sowa

1971 11% \$49,253

President's Level
Jerome Gilligan
Founder's Level
Joseph Mulvehill
Veritas Level
Bob Tift

Red Knight Level
James Fox
Gerald Henk
Builder's Level
Michael Beddor
Robert J. Dwyer
Century Level
Stephen Duerr
Ralph Eckes
James Reger
James Sherburne
Duane Smith
Daniel Snyder
Contributor
Mark Buchanan
Patrick Byrne
Terrence Cook
Thomas Ferrara
Thomas LeVoi
James Linhoff
Walter Sellman
Joseph Tromiczak

1972 8% \$9,750

Veritas Level
Mark Graham
Patron's Level
Michael Gilligan
Benefactor Level
Thomas O'Meara
Century Level
Joseph Bethke
Greg Guettler
M. Gregory Hull
Edward Marben
Gary Olson
Christopher Pattock
Contributor
Gregory Blevins
Keith Johnson
Patrick Salzer

1973 9% \$1,812

Builder's Level
James Clifford
Thomas Mikulay
Century Level
Charles Becker
Keith Collver
Jeffrey Gacek
Thomas Hubbard
Joseph Kolars
William Lundberg
Michael Premo
Jerry Reger
John Reiser
Contributor
Michael Bowler
Timothy Brennan
Tom Graff

1974 13% \$12,914

Founder's Level
John Moore
Red Knight Level
William Harding
Fran Knapp
Builder's Level
Michael Karels
Robert Kruse
John Nagel
Paul Williams
Century Level
John Coleman
Joseph Larkin
David Paquette
Kevin Reger
Contributor
Michael Keefe
Dennis McGrath
John Richey

Benilde-St. Margaret's Alumni

1975 9% \$4,399

Benefactor Level
John Dwyer
Red Knight Level
Bill Cottrell
Builder's Level
Jo Anne Battaglia Anderson
Norton Hatlie
Paul Keefe
John Klein
Yvonne Witt
Century Level
Timothy Grant
Patrick Walter
Contributor
Cynthia Boes
Catherine DeCosse
George Everett
Brian Fitzgerald
Gregory Kemp
Paula Jarosh Romportl
Paul Schumacher
Paul Shallbetter

1976 11% \$7,469

Patron's Level
Christopher Lyon
Red Knight Level
Mary Kay Volp Johnson
Mary Streitz
Builder's Level
Lawrence Busch
Maurice Florance
Joseph Howard
George Kemp
Fred Mutchler
Mary Joranger Neraasen
Richmond Rolfs
Mary Beth Dornbach Snyder
Contributor
Karen Gruidl Bjorgan
Thomas Braun
Catherine Calder
James Fisher
Paul Frenz
John Harm
Philip Hatlie
Stephen Hirschey
David Hynes
Debra Ennen Jasper
Patricia O'Connor Kelley
Richard Miller
Sheila Seiter Miller
Mark Peterson
Jeanne Kattar Winslow
Sarah Wuest

1977 9% \$8,041

Patron's Level
John Gilligan
Larry Pohlen
Benefactor Level
Josine Mary Peters
Red Knight Level
Michael Daly
William Hickey
Century Level
John Cottrell
Patrick Hamilton
Sue Higgins Hamilton
Elizabeth Florance Molgren
Contributor
John Beeman
Lisa Gottschalk Harm
Thomas Hogan
Todd Johnson
Susan Fuegner Knauff
Erin O'Brien
Catherine Berg Ostlie
Michael Selle

1978 13% \$16,318

Founder's Level
Rachael Scherer
Patron's Level
Margaret Gilligan
Benefactor Level
Kathryn Pyzdrowski
Red Knight Level
Melissa Walker O'Shaughnessy
Century Level
Anonymous
Carole Williams Briggs
Daniel Carr
Laura Gustafson Cullen
Margaret Foley Day
Cheryl Drahos Dixon
Terrence Goblirsch
Edward Hasselman
Richard Mahony
Kathleen Schumer Mueller
Marilyn Peller Nelson
Sandra Boes O'Brien
Rose Reiser Pingel
Steven Wise
Contributor
Douglas Feger
Shannon Duffy Hendricks
Diane Vriezen Nelson
Ann Mueller Ossanna
Peter Schumacher
Leonard Weingartz
David Winters

1979 8% \$2,432

Red Knight Level
Steven Fischer
Anthony Mailhot
Maureen Hastings Shaver
Century Level
James Boulay
Corrina Colwell Conley
Christopher Koch
Daniel LeSage
Bradley Madson
Rita Volp
Contributors
Carolyn Doyle Erchul
Thomas Larkin
John Myers
Michael Ott
Anita Medina Tomascak
Lisa Bennetts Willcockson

1980 9% \$10,175

Patron's Level
Rosemary Bowler Guidinger
Jean Hromatka Nightingale
Benefactor Level
James Kopp
Mary Kay Morin Kopp
Century Level
John Arachtingi
Timothy Jewett
Ann Marie Lee Klavins
John Klavins
Margaret Pyzdrowski
Joseph Rabatin
Robert Hickey Solis
Contributors
Monica Ford Eppinger
Renee Dahl Hamilton
Robin Bennetts Kehoe
Kristi Koelfgen
Julie Ortler Palach
Ellen Lynch Reader

1981 12% \$6,185

Patron's Level
Joseph Lee-Gilligan
Benefactor Level
Anne Ford Moore

Century Level
Gerard Busch
Kari Conway
Paula Herbert Gamer
Katherine Rosenthal Kleiner
Eric Olson
Contributors
William Arachtingi
Paul Aubart
Rob Barniskis
David Brasket
Molly Carr
Hugh Dillon
Julienne Stephani Dunlop
Kathleen Belanger Gebert
Karen Kozachok Gutierrez
Sarah Fritz Hochburger
Cate Howard
Thomas Kruse
Stuart Laidlaw
Brian Murphy
RaeAnn Ruder Overberg
Paul Rocheford
Philip Williams

1982 6% \$17,350

Founder's Level
James Cron
Patron's Level
Peter Scherer
Benefactor Level
Sheila Cronin Bornfleth
Red Knight Level
Paul Cornelison
John Gordon
Lynn Gabler Jenn
Michael Lamb
Builder's Level
Timothy Bianchi
Andrea Thraen Gionet
Kevin Kelly
Elizabeth Knapp Rosenberg
Contributor
Jeffrey Anderson
Kathryn Stelzer Anderson
Gary Link

1983 10% \$6,707

Benefactor Level
Daniel Murphy
Kristopher Scherer
Kevin Weber
Michelle Fournier Weber
Builder's Level
Brian McKean
Century Level
Jennifer Gausman Benson
Janie Bush
Veronica Champion
Douglas Eiden
Peter Johnson
Steven Lehr
Erin Aiken O'Brien
John Simons
Michael Smith
Caroline Cochrane Stroh
Stephen Stroh
Contributor
Michael Dalsin
Paul Foley
Angela Medina
Michael Rabatin
Susan Brewer Riesgraf
Kathleen Egan Salman
Matthew Schumacher
Janet Rosovitz Swedal

1984 7% \$1,665

Red Knight Level
Michael Rogers
Builder's Level
Robert Foley

Century Level
Lisa Erlanson Bailey
Michelle Beddor
Michael Foley
Brigid Lynch
Daniel McGie
Contributor
Paul Bennett
James Cronin
Kathleen Burns Daniels
Kristin Mikesh Fiebiger
Jane Hudacek
Catherine Brasket Taylor
Jane Whitlock
Elizabeth Eisch Wilson

1985 7% \$3,686

Red Knight Level
David Platt
Michael Nemanich
Mary Aubart Schaefer
Lisa Hendrickson Shaughnessy
Builder's Level
Anastasia Gallagher Lynch
Thomas Lynch
Century Level
Aysel Gokcen Butler
Maureen Flynn Haakonson
Michael Hoffman
Maureen McRaith
Contributor
Joseph Egan
Raymond Farah
Gregory Larkin
James Techam
Matthew Tyler
Stephen Voegel

1986 6% \$7,775

Patron's Level
Mark Scherer
Benefactor Level
Lisa Lenhart-Murphy
Red Knight Level
Gregory Daniel
Christine Glisczinski
Megan Kern
Stephen Pohlen
Builder's Level
Maureen Weber Grazzini
Todd Noteboom
Century Level
Sandra Janssen Barry
Jeffrey Olejnik
Thomas Ruder
Mary Cron Schulman
Luke Toft
Jeanne Halder Yeager
Contributor
John Eichten

1987 4% \$1,115

Builder's Level
Keri Sobiech
Century Level
Sheila Cronin Anderson
Molly Fayfield Erdahl
Terry Gibson
Sharon Ness McGrann
Contributor
Karen Hill Galvin
Peter Hoffman
Brigitt Orfield
Bridget O'Toole
William Pohlen

1988 4% \$1,475

Red Knight Level
Sean Lumpkin

<i>Builder's Level</i> Voigt Lenmark Donald Pizzolato <i>Century Level</i> Ann Starshak Olson Adam Sellke Mary Tremmel Sellke <i>Contributor</i> Loryn Mucha Foltrath Thomas Kreykes Susan Smith Quinn	1989	6%	\$45,261	<i>Century Level</i> Brian Grace Jason McCarville Joseph Nemanich Peter David Rademacher <i>Contributor</i> Maggie Kukar Katherine Brozic Knoll Alex Levin Melissa Neis Mignano Eric Nielsen	1994	5%	\$1,905	<i>Contributor</i> Susan Hancock de Pazos Carolyn Murry Harmeyer Brian Lucius	2006	3%	\$235	<i>Century Level</i> Reed Mainquist <i>Contributor</i> Michael Duffy Daniel Morin Allison Schumacher Christopher Walz
<i>President's Level</i> John Feltl <i>Veritas Level</i> Anne Welsh Kimmel Robert Kimmel <i>Red Knight Level</i> Thomas Starshak <i>Century Level</i> Kristin Neis Jamison Stephen Smith Mary Tompkins <i>Contributor</i> Mary Pat Abraham Jennifer Young Cutter Daniel Glisczinski David Knauff Jacob Nau Bridget Erlanson Tangney	1990	5%	\$1,725	<i>Benefactor Level</i> Maria Scherer <i>Builder's Level</i> Elizabeth Rogers <i>Contributor</i> Brigid McShane Browne Elizabeth Dooley Hankey Martin Harrington Ann Shallbetter	1995	5%	\$1,475	<i>Veritas Level</i> Andrew Alberts <i>Benefactor Level</i> Katie DesLauriers Sullivan <i>Builder's Level</i> Meghan Lind John O'Leary <i>Century Level</i> Ben Dillon Abigail Shaltz Feathers Jill Flaherty Link Maureen Perry <i>Contributor</i> Jourdan Anderson Curtis Wilson	2009	1%	\$70	<i>Contributor</i> Joseph Jetland Sydney Speltz
<i>Benefactor Level</i> Philip McLaughlin <i>Century Level</i> Douglas Bertossi Maureen McManus Decker Eric Kohn <i>Contributor</i> Jeffrey Hillins Melissa Warren Levin Douglas Lucas Eric Tennessen Elizabeth Myers Wolter	1991	6%	\$4,402	<i>Benefactor Level</i> Christopher Culp <i>Century Level</i> Ann Cavanagh Christopher Leising Mary Beth George Puder <i>Contributor</i> Jennifer Cibulka Atkinson Elise Sicard Minzer Andrew Zimney	1996	12%	\$10,820	<i>Contributor</i> Micki Cloutier Sarah Perrine Gabriel Skelly	2011	14%	\$1,754	<i>Benefactor Level</i> Lauren Flavin <i>Century Level</i> Taylor Best Emma Forschler <i>Contributor</i> Lauren Anderson Rachel Bilski Meredith Cannon Patrick Daly Brett Draxler Lindsay Hendrickson Daniel Hudlow Diana Hurley Laura Jacobson Elizabeth Jaskowiak Andre' Jensen Amy C. Johnson Amy L. Johnson Lindsay Kaminski Katarina Karlen Haley Kellogg Charles Kennedy Nicholas Kim Anne Kluis Madeline Moore Christopher Nagel Kirby Puckett Samuel Scherer Peter Schubloom Kelly Slater Melissa Vandersteen Bryan Waterman Gregory Zeman
<i>Patron's Level</i> Christine Peters Brick <i>Red Knight Level</i> Michael Carson Molly Ryan Carson <i>Century Level</i> Heidi Kram Adam Lenhart Rich Olson <i>Contributor</i> Tatyana Hoffman Blankenship Robin Cook Ebbert Connie Donato Fredin Nicole Luger Nau Maggie Romens	1992	4%	\$617	<i>Veritas Level</i> Daniel Cooley <i>Benefactor Level</i> James Dunbar Jennifer Darcy Murry Patrick Murry <i>Builder's Level</i> K. Paul Bednarowski Katherine Leahy Jeffrey Rauenhorst <i>Century Level</i> Corey Anderson Meredith Schipani Smith Marie Gustafson Williams <i>Contributor</i> James Boldischar Wendy Hever-Boldischar James Lee Jill Paquette Stern Andrea Vignali Daniel Vukelich	1997	4%	\$1,386	<i>Patron's Level</i> Kristine Rauenhorst <i>Red Knight Level</i> Jesse Farrell <i>Century Level</i> E.J. Baldwin Charlie Daum Steven Dunbar Nicole Krueger John Melsen	2002	3%	\$2,710	<i>Patron's Level</i> Joseph Mahoney <i>Century Level</i> Jodie Flaherty Murray <i>Contributor</i> Kerry Cooley Adam Muston Sarah Rauth Polovitz
<i>Builder's Level</i> Jeff Staley <i>Century Level</i> Heather Anderson Patrick Riley Molly Rogers <i>Contributor</i> Wade Briner Jonathan Knoll	1993	17%	\$3,675	<i>Benefactor Level</i> Brian Gilmore <i>Century Level</i> Carrie McCarville Nelson <i>Contributor</i> Nicholas Dittrich Matthew Foley Ryan Sather Jeffrey Zajac	1998	7%	\$1,935	<i>Contributor</i> Kerry Cooley Adam Muston Sarah Rauth Polovitz	2003	3%	\$1,053	<i>Red Knight Level</i> Ian Schaser <i>Builder's Level</i> Amber Page Engelke <i>Century Level</i> Katherine Jetland <i>Contributor</i> Christine Cannon Melissa Lucas Liz Rebehn
<i>Benefactor Level</i> Andrea Scherer Belton Matthew Scherer <i>Builder's Level</i> Anne Kuffel Koby Rachel Kuzma Olson	1999	5%	\$7,675	<i>Benefactor Level</i> Christopher Culp <i>Century Level</i> Ann Cavanagh Christopher Leising Mary Beth George Puder <i>Contributor</i> Jennifer Cibulka Atkinson Elise Sicard Minzer Andrew Zimney	2000	2%	\$110	<i>Red Knight Level</i> Joseph Mahoney <i>Century Level</i> Elizabeth Sturlaugson Kohlnof Maureen Sefton <i>Contributor</i> Christopher Stephens	2004	2%	\$420	<i>Century Level</i> Andrew Daum Elizabeth Sturlaugson Kohlnof Maureen Sefton <i>Contributor</i> Christopher Stephens
				<i>Red Knight Level</i> Nathan Springer <i>Builder's Level</i> Theresa Clifford Acevedo Kathleen Burke Carey Ryan Hastings Kristin Melsen <i>Century Level</i> Matthew Dunbar Kathleen O'Connor				<i>Patron's Level</i> Katherine Rauenhorst <i>Red Knight Level</i> Jesse Farrell <i>Century Level</i> E.J. Baldwin Charlie Daum Steven Dunbar Nicole Krueger John Melsen	2005	2%	\$350	<i>Century Level</i> Michael DesLauriers <i>Contributor</i> Peter Gilligan Cori Gunkel Bennett Lang

Faculty and Staff
The quality of Benilde-St. Margaret's education is reflected in the caring and commitment of its faculty and staff. All members of the BSM faculty and staff give generously of their time and talent. We salute those faculty and staff who have made financial contributions as well.

Anonymous
Mary Andersen
Amanda Anderson
Thomas Backen
Sandra Barry
Jennifer Biglow
Lynn Bottge
Dan Bowler

Veronica Campion
 Susan Cipolle
 Maura Daly
 Barbara Davis
 Amy Desmond
 Robert Eberle
 Scott Effertz
 Constance Fourre
 Alison Frank
 Ted Freese
 Michelle Frstrom
 Nicholas Gamache
 Patricia Gilmore
 Rosalie Weisman Goldberg
 Kathryn Green
 Sue Higgins Hamilton
 Caren Hansen
 Michael Hawkins
 Kathy Hawkinson
 Gerald Henk
 Jon Hickman
 Greg Hoemke
 Holly Hoey-Germann
 Kathy Jacobson
 Keith Jones
 Paul Keefe
 Judy Koski
 Patrick Krieger
 Dave Kuntz
 Katherine Leahy
 Lisa Lenhart-Murphy
 Mark Lex
 Mary Beth and Albert Liekhuis
 Joel Loecken
 Shane Lomax-Sisco
 Lynn Lynch
 Bob Lyons
 Katherine McDonald
 Carol McLain
 Jessica McMahan
 Carol McNamara
 Anne Moen
 Michael Mooers
 John Moore
 Robert Nelson
 Mary Neraasen
 Jean Nightingale
 Dianne Numelin
 Mary Fran O'Keefe
 William Ola
 Richard Olson
 Kenneth Pauly and Anne Marie Dominguez
 Jerry Pettinger
 James Picard
 David Platt and Megan Kern
 Stephen Pohlen
 Nicole Rasmussen
 Edward Reiff
 Francis Roby
 Susan Skinner
 Mark Snell
 Melenie Soucheray
 Nancy Stockhaus
 Caroline Cochrane Stroh
 Dan Sylvester
 Bob Tift
 Barbara Uschold Anderson
 Jason Wallestad

Friends

Many people share generously with the school – as a measure of their regard for Benilde-St. Margaret's and the service we provide to the community. We appreciate the financial support of the parents of our alumni, grandparents of current students and alumni, our former faculty and staff, and other friends and neighbors who are listed below by giving level.

Honorary Level

Anonymous
 Ralph and Marjorie Crump
 Alvin and Mary Agnes McQuinn
 Mark and Karen Rauenhurst
 Patrick and Ann Ryan

President's Level

Mary Jo Feltl
 John and Denise Graves
 James and Mary Jetland
 John and Lois Rogers

Founder's Level

Steven and Lisa Crump
 Randolph and Cathy Darcy
 Roy and JoAnn Ferber
 John and Sharon Fleming
 Stanley and Rose Gonsior
 Sharon and Tom Leahy
 Francis and Randon Pintens
 Colleen Ryan
 Warren and Mary Lynn Staley
 Marc Weisenburger

Veritas Level

Michael and Elizabeth Dickoff
 Peter Gilligan
 Robert and Mary Healy
 Jim and Sara Kunitz
 John and Jane McNeill
 Joseph and Kathleen Mucha
 Michael and Laurel Murry
 Roger and Irma Scherer
 Henry and Christina Shea
 Guy and Susan Shoemaker
 Marion Short
 Kathleen Wolfe
 Gloria Woog-Kamish

Patron's Level

Anonymous
 Elmer and Laura Baldwin
 Patricia Curran
 Clara Dolan
 Denis and Caroline Harrington
 Virginia Haughey
 Lee and Barbara Kopp
 Lavonne Kruse
 Larry and Jean LeJeune
 Richard and Janet Neville
 John and Mary O'Toole
 Donna Welsh
 Wyley Family Fund

Benefactor Level

Gerald and Marilyn Burke
 James and Billie Cashman

Warren and Theresa Christianson
 Michael and Carol Cushmore
 George and Carol Daum
 Richard and Mary DesLauriers
 Edward and Antoinette Egan
 Jim Farrell
 Coke Fitzgerald
 Timothy and Joan Flaherty
 Randall and Leslie Geerdes
 Ronald and Rosemarie Glover
 Alfred and Mary Hoedeman
 Jim and Wanda Hollensteiner
 Michael and Susan Johnson
 Michael Kehoss and Patricia Marek-Kehoss
 Elmer and Beverly Kopp
 Doug and Mary Beth Lennick
 John and Helen Lindseth
 Mary McPherson
 Greg and Barb Melsen
 Douglas and Sandra Milroy
 Catherine O'Meara
 Mary O'Meara Moynihan
 Lorraine Pohlen
 Alfred and Billie Reger
 Ken and Ann Robar
 Norma Scherer
 Steve and Tamela Schroll
 Elmer and Kathleen Schumer
 Fr. Stanley Srnc
 John and Eleanor Steichen
 Alan and Barbara Tennesen
 William and Judith Weiler

Red Knight Level

Anonymous
 Karen Baker
 Robert and Susan Cipolle
 Cinda Collins
 Ernest and Mary Dorn
 Kenneth and Mary Duncan
 Kenton and Sharon Ebeltoft
 Maureen Finnegan
 MJ and Patricia Florance
 Barbara Galvin
 Stanley and Rose Gonsior
 Gordy Goss
 Scott and Kathleen Hawkinson
 George and Lucille Heenan
 Kent and Judith Hodder
 Bob and Dottie Kelly
 Robert and Margaret Keppel
 Voigt and Mary Jean Lenmark
 Jim Mack
 Edward and Susan McConville
 Tammis McMillan
 Dianne Numelin
 Larry and Judy Pfaff
 Robert and Charlotte Ross
 Denis and Patricia Schirmers
 Jeffrey and Nancy Selleck
 Terrance and Susan Wilm
 Frederick and Joanel Zimmerman

Builder's Level

Frank and Mary Jo Aiken
 Vern and Delores Anderson
 Bob and Lisa Baumgartner
 Robert and Susan Burns
 Russell Cowles
 Timothy and Nancy Cronin
 Robert and Margaret Delmore
 Marcella Effertz
 Richard Foley
 William* and Eileen Foley
 Michelle Frstrom
 Catherine Gavinski
 Thomas and Sue Haeg
 Gregory and Mary Ann Halbert
 Lori and Ron Hume
 Dennis and Linda Johnson
 Jeff and Janet Johnson
 Laurie LaVigne

John and Judy Lenhart
 Peter and Sheila Lind
 Ardwin and Annette Link
 Richard and Carol Mahony
 George and Rita Marx
 Joseph and Lynn McCarthy
 David and Anne Moen
 Robert and Joanne Neis
 George and Ann Nemanich
 Linda Olson
 Anthony and Leanne Peters
 Ken Rockhold and Nancy Hoiium
 Francis and Elaine Spika
 Michael and Nancy Stockhaus
 Mike and Carol Weber
 Frank and Mary Ellen Zappulla
 Barbara Zurek

Century Level

Thomas and Eileen Ackerman
 John and Judith Adams
 Duane and Susan Ager
 Dale and Mary Alberts
 John and Janice Almquist
 Phyllis Antognozzi
 Paul and Gloria Arntzen
 Lawrence and Kathryn Aubart
 Jim and Judy Baker
 Elaine Barber
 Angeline Bartlett
 Mary Beth Birkeland MacMillan
 Richard and Lorraine Brasket
 James and Mary Ann Brewer
 Robert and Judith Brooks
 Frederick and Judith Brown
 Patrick and Catherine Burns
 William Busch
 Ken and Martys Buss
 Jeffrey and Mary Carson
 J. Patrick and Charlotte Cashin
 Joseph Cella
 J.J. and Ursula Choromanski
 Jack Clifford
 Betty Cole
 William and Jane Collien
 Donald and Loretta Combs
 George Connor
 Ken and Mary Conry
 Joan Coulombe
 Sheila Cron
 Charles Cushing
 Fr. Rinaldo Custodio
 Michael and Maureen Daly
 Paul and Susan DeJute
 Kathleen Dillon and Patrick Reusse
 James* and Helen Dillon
 John and Julie Ditzler
 Mike Duthoy and Karen Heim-Duthoy
 Reinhard and Sue Ebnet
 Greg Lano and Evy Engrav-Lano
 John Whiting and Pamela Espeland
 Larry and Cathy Farley
 Kathleen Fitzsimmons
 James and Judith Flaherty
 Jack and Sylvia Fleming
 Robert* and Stephanie Ford
 Constance Fourre
 Paul and Mary Freeman
 Carolyn Freese
 Gene and Sally Fritze
 Steve and Mary Jane Gilkerson
 Patricia and Thomas Gilmore
 Colleen Glennon
 Beverly Glover
 Marcella Gordon
 John and Donna Grant
 James and Mary Ann Gunville
 Maxine Hamilton
 Mary Harvey
 Robert Hauer
 Seth and Christine Hausman
 Michael and Beth Hawkins
 Tom and Kathy Hayden

Thomas and Margaret Hebig
 Dave and Adrienne Hedman
 Mary and Thomas Herman
 Erv Hoffman
 Robert and Blandine Hogan
 John and Sally Hovanec
 Rosa Mae Hromatka
 Cynthia Irrgang
 Jane Jacobs
 Noel and Kathy Jacobson
 George and Margaret Johnson
 John and Kristin Joseph
 Donna Kitt Juntunen
 John Kaster
 Steve and Sandra Katkov
 James and Susan Keane
 Dolores Keefe
 Robert and Lyn Kern
 Dave and Jan Kleifgen
 William and Sandra Knauff
 Jacqueline Kostick
 Marge Kozachok
 Michael and Lidia Kozak
 Donald and Marilyn Krueger
 William and Ann Langford
 Robert and Geraldine Lauer
 Kurt and Cathy Lawler
 Albert and Carol Lee
 Richard and Lynnette Leising
 Gordon Lewis
 Joan Litfin
 Charles and Jennifer Loeper
 Nancy Lynch
 Michelle Manatt
 Pat and Sue Martyn
 Don and Jan Matson
 Richard and Nelma Mavison
 David and Susan McCarville
 Jerry* and Jane McCauley
 Jan McGlennon
 John and Roann Mezzenga
 Michael and Lynda Moylan
 Mike and Judy Muenzberg
 Robert* and Lois Nelsen
 John and Luann Nelson
 Scott Nelson
 John and Lorraine Neuberger
 John O'Toole and Mary Gallagher
 Gilbert Overson
 Jean Perushek*
 Gregory and Deborah Peterson
 Kevin Phernetton
 Dominic and Jean Plucinski
 Ernest Poston
 Frederic Prudhomme
 Watson Quinn
 Mike and Diane Quinn
 Don Quinn
 Alfred and Gloria Racchini
 Alfred and Catherine Rashid
 Hans Reiss
 Alisa Revou
 Amelia Rixe
 Francis and Maura Roby
 John and Marilyn Ross
 Donald and Betty Roy
 Charles and Linda Ruder
 Michael Schley and Peggy
 O'Brien Schley
 James and Lorraine Schneider
 Harold and Bevard Schrum
 Elmer and Carol Schwankl
 John and Marilyn Senty
 Barat and Lynne Shah
 Robert and Suzanne Sherwood
 Loras and Rosemary Sieve
 Herbert Silvestri
 Karen Silvestri
 Mary Smith
 Jeremy and Nancy Springer
 Albert and Mary Starshak
 Robert and Estelle Stillman

Martha Stortz
 Robert and Macrina Sudbeck
 Alan and Philothea Sweet
 Louis and Lezlie Taylor
 David and Marlys Thies
 Ed and Kate Thompson
 Marilyn Tift
 Wayne and Mary Ann Tuttle
 Robert and Darby Twesten
 Daniel Untiedt
 Henri* and Morna Van Groningen
 John and Rose Wallin
 James and Elizabeth Westrich
 Mavis Wheelock
 James and Mary White
 Richard Williams
 Charles Wiser
 William and Lurene Witzig
 James and Jacqueline Wojciak
 Barbara Wollan
 James and Kathy Wyman
 Thomas and Mary Zins

Contributor

Mark Adelman
 Leo and Anna Mae Albertson
 Duane and Barbara Aldrich
 William and Jan Antilla
 Robert and Marion Appelgren
 Brenda Banks
 Mary Battaglia
 Len and Kathy Beatty
 Mary Ann Begin
 Steve and Yvonne Benson
 Jerry and Jan Benusa
 Roger and JoAnn Bertrand
 Doris Betcher
 James and Margaret Bird
 Joan Blake
 Allan and Stacey Bly
 Gerold and Deloris Bornetun
 Beverly Bowler
 Bill Bowler
 Tom and Janine Braman
 Kathleen Brand
 Nancy Burke
 Charles and Ruth Carraher
 J. Patrick and Mary Casey
 Samuel and Barbara Clark
 Carrie Smith Conway
 Mary Ann Cope
 Kathleen Crawford
 Mary De Long
 Raymond and Elaine Deeny
 David and Patty Dittrich
 Daniel and Gretchen Eckes
 Mark and Victoria Eckes
 Steven and Gretchen Eckes
 Glen and Ardith Eiden
 Dennis and Bev Eliason
 Helen Farus
 Dale and Margaret Fose
 Robert and Marian Fox
 Constance and Marion Freed
 Craig and Judith Freeman
 Robert and Katie Gardner
 Ardell and Barbara Gilb
 David and Barbara Gillham
 Thomas and Cheryl Glisczinski
 Roger Godin
 Mark and Pamela Gonrowski
 Carolyn Goodger
 Nancy Gratz
 John and Bernie Griffin
 Valerie Grigsby
 Evelyn Gross
 Frederick and Vicki Gross
 Kenneth and Evelyn Gudorf
 Brandon and Colleen Guest
 Suzanne Guggenberger
 Bob and Char Gunvalson

Charles and Kay Haecherl
 Stanley and Roxanne Hamilton
 Victor and Judy Hanks
 Mark and Marg Hanna
 John and Mary Harrington
 Chuck and Hazel Hastings
 Stanley and Helen Heider
 Katie Heising
 John and Victoria Helgeson
 Patrick and Jennifer Hennessy
 Thomas and Kathryn Hentges
 Harold and Mary Ellen Hinkens
 Margaret Hoenack
 Gordon and Norah Hoff
 Robert and Mary Lee Hoffman
 Frank* and Vivian Holland
 Mark and Mary Holmes
 Timothy and Judy Holmquist
 James Hreha
 John and Dorothy Hudacek
 Jo Imholte
 Lee and Jo Jacobs
 Ronald Jacobs
 Richard and Susan Jacobson
 Rich Janezich
 Nestor and Laurie Jaramillo
 Gary L. and Debra Jensen
 Bert Jones
 Gregory and Kathleen Jordan
 Philip and Patti Jurek
 Thomas and Dolores Kalb
 Mark Kaplan
 Gloria Katzmarek
 Robert and Rosemary Kautzer
 Duane Kieffer
 Robert and Dorothy Kilian
 Norma King
 Gregory Kliner
 Bob and Marion Knox
 Willis and Margaret Knudsen
 Carol Koch
 Michael and Judith Koski
 William and Nancy Koster
 Carolyn Krick
 Winifred Kroeten
 Mark and Wendy Kuzma
 Gerald Lager
 Thomas and Laura Lammert
 Sharon Langland
 Lorraine Last
 Gladys Laughlin
 Ina LaVigne
 John and Jo Ann LaVigne
 Nicolas and Barbara LaVigne
 Tom and Susan Lemke
 Jan Lichtenberger
 Caroline Lien
 Mary Lindsay
 James and Elaine Loaney
 Cathy Lucius
 John and Suzanne Lupo
 Don and Evelyn Maddaus
 John and Chris Matiska
 John and Penny Matiska
 Jack and Janice Mattson
 Lee and Beverly Matzka
 Harvey and Elaine May
 Ryan and Susan McCabe
 Timothy and Joyann McChesney
 Larry and Barbara McDonald
 James and Margaret McGie
 Michael and Roxanne McGowan
 Joan McHugh
 John and Mary McMahan
 James and Sharon Meisnitzer
 Warren and Jan Melles
 Judy Merritt
 Yvonne Meunier
 James and Marilyn Minford
 Kenneth and Mary Moen
 Mary Moore

Eric and Mee Lee Nelson
 Paul and Sylvia Neumann
 Louis and Amy Newman
 Libby Nickel
 Jerry and Jane Noyce
 Paul O'Gorman
 Allan and Mary Ellen Olson
 John and Sharon Pack
 Andrew and Mary Paprocki
 Bharat Parekh and Karin
 Banerjee Parekh
 Grace Parsons
 Craig Paskvan
 David and Mollie Paulson
 Gary and Judy Peterson
 Thomas and Susan Peterson
 Kevin Phernetton
 Robert Pigozzi
 LuAnn and Jim Polve
 Jim Thomas and Kitty Prentice
 Mark and Susan Jondahl Prok
 Don Quinn
 James and Alice Quinn
 Larry and Yvonne Quinn
 Raphael and Stephanie Quinn
 Thomas and Mary Quinn
 Patricia Ratelle
 Michael and Mary Regan
 Robert and Janice Reinhardt
 Richard and Jane Reinholdz
 Rick and Maureen Rendahl
 James Rennie
 Lou and Jerry Richardson
 Gertrude Rocheford
 Shirley Rockwell
 Brother Richard Roller
 John and Nancy Ronhovde
 Patricia Roos
 Florence Roth*
 Pauline Roth
 Patrick Rouen
 Wynette Roza
 James Roy
 Dan and Pat Rukavina
 James and Diane Sarosiek
 Kathy Saunders
 Molly Schaaf
 Janet and Joseph Scheinost
 A. Ward and Barbara Schuster
 Charles and Dolores Seashore
 Delton and Dorothy Sebenaler
 Rosella Seiwert
 Arlene and Larry Selberg
 Clarence Shallbetter
 Merle and Marilyn Sheffield
 William and Sandra Shumate
 Laurence and Phyllis Simeon
 Brian and Nancy Siska
 Bobbie Walter Skemp
 John and Doreen Skraba
 Jim and Mary Jo Smith
 Mary Smith
 Barbara Snider
 Dennis and Theresa Stockdale
 Bob Sullivan
 Mary Sullivan
 Ione Swanson
 Robert and Mary Anne Swanson
 William and Patricia Swanson
 Robert and Barbara Sykora
 Thomas and Barbara Teresi
 Ken and JoAnn Thaden
 Archie and Carrie Theisen
 Arthur and Mary Thole
 Steven and Mary Thomas
 Robert and Arlene Thorne
 Brian and Margaret Van Beusekom
 Dick and Jean Van Keulen
 Stanley and Cynthia Veeker
 Robert Victor and Kathy Higgins-Victor
 Albert and Virginia Vonhof
 Joseph and Sharon Walbran

Thomas and Anne Walther
Margaret Warning
Phabe and Rita Wartman
Dennis and Barbara Wasyluk
Jim and Joan Watt
Paul and Sally Wiche
Patrick and Hanne Williams
Sharon Wilson
Bobb Wold
Elizabeth Jondahl Wolfe
Brian and Pamela Woyda
Ken and Marlene Wright
Arthur and Marilyn Zenzen

Businesses, Foundations and Corporations

Many businesses and philanthropic organizations support our school's education mission through gifts to the FirstFund, to endowed and capital funds, to student scholarships, and to specific departments, programs, or student activities, including in-kind gifts of books, equipment and other educational materials. In addition, many corporations match gifts to Benilde-St. Margaret's by their employees. We are grateful to the organizations listed below that are partners in providing quality education.

Anonymous
Ameriprise Financial Gift Matching Program
Anne's Dance Studio, LLC
Anvil International, Inc.
Aqualia Foundation Limited
Archdiocese of Saint Paul and Minneapolis
AYCO Charitable Foundation
Bank of America
Banner Engineering Corp.
Baton Rouge Area Foundation
Beauty Craft Supply
Beckman Coulter Foundation
Benedictine Health System
Best Buy Co., Inc.
Beyer & Rock Investments
BSM Class of 2011
BSM Parent Association
Cannon Family Foundation
Cars With Heart
Catholic Community Foundation
CenBank
Charles and Ellora Alliss Educational Foundation
Charles Pankow Foundation
Community Shares of Minnesota
Cottrell Law Firm
Custom Products and Services
Disciplined Growth Investors, Inc.

Donaldson Company, Inc.
Dryer Family Foundation
E-Three of Hayward, Inc.
Eaton Corporation
Emerson Electric Company
Express Scripts Foundation
Feltl and Company
Ferber Family Foundation
Fidelity Investments Charitable Gift Fund
Gap Foundation
Genentech
General Electric Foundation
General Mills Foundation
Gilligan Foundation
GiveMN.org
Graco Foundation
Grand Marais State Bank
Greater Twin Cities United Way
Green Pro, Inc
Hammel, Green and Abrahamson, Inc
High North Inc.
Honeywell Foundation
Imation Corp.
James & Wanda Hollensteiner Foundation
James B. and Catherine L. O'Meara Charitable Trust
JustGive.org
Kopp Family Foundation
Kraft
LeJeune Family Foundation
Mark and Karen Rauenhorst Family Foundation
Martyn Service Company
McDonald's Corp.
Medtronic Corporation
Merck Company Foundation
Microsoft Giving Campaign
Midwest Realty Advisors, Inc.
Minnesota Elite Girls Lacrosse
Minnesota Hockey, Inc.
Minnesota Independent School Forum
Morgan Stanley Smith Barney
Myriad Inc
Network for Good
Northwestern Mutual Life
Opus Foundation
Opus Prize Foundation
Paket Corporation
Park Nicollet Foundation
Piper Jaffray Companies
Pohlad Family Foundation
RBC Dain Rauscher
RMG
Ryan Foundation
Schwab Fund for Charitable Giving
Sieben Foundation
Sisters of St. Joseph of Carondelet
SMA Class of 1950
Staley Family Foundation
TCF Foundation
The Dorsey & Whitney Foundation
The Julia Burke Foundation
The Lawlor Group Inc.
The Minneapolis Foundation
The Minnesota Community Foundation
The Saint Paul Foundation
The Pentair Foundation
UBS Financial Services Inc.
UnitedHealth Group Foundation
US Bancorp
Vanguard Charitable Endowment Program
W. G. Christianson Foundation
Wells Fargo
ZAPS Learning Company, LLC

Honor and Memorial Gifts

Memorial and honor gifts are a meaningful way to remember special people and celebrate significant events. These gifts exemplify the donor's regard for Benilde-St. Margaret's and for the colleagues, friends or family members honored here. The school is grateful to the following individuals and organizations that chose to mark the lives of a loved one through memorials or honoraria.

Gifts in Honor of:

Mary Ambrose '34
Michael and Marjorie Bailey

Megan Collins '11
Frank Zappulla

Jill Gilkerson '00
Steve and Mary Jane Gilkerson

David Haas
Barbara Uschold Anderson

Mick Hawkins
Barbara Uschold Anderson

Annie Hinkens '15
Alfred and Mary Hoedeman

Kate Hinkens '12
Alfred and Mary Hoedeman

Helen Lindsay '14
Mary Lindsay

Debbie Martinson
James and Lucella O'Meara

Gifts in Memory of:

Ann Andersen, mother-in-law of Mary Andersen
Dan Bowler
Fred Goldberg and Rosalie Weisman Goldberg
Michael and Beth Hawkins
Carol and Sean McNamara
Mary Fran O'Keefe

Laurence Balttes, alumni parent
Mary Balttes

Eileen Begin
Mary Ann Begin

Chris Briggs, father of Danon Briggs '12
Anonymous
Louis and Amy Newman

Mary Castonia '36
Barbara Hartwig Castaneda

Bob Chupardia
Dianne Numelin

Jack Dolan, alumni parent and grandparent
Clara Dolan

Lyle Eakins
Robert and Susan Cipolle
Norma Scherer

Rick Francis '73
Mark and Mary Holmes

Dorothea Gilligan
John and Nancy Lawlor

Erma Gillis '26
Kenneth and Evelyn Gudorf

Helena Hickman, mother of Jon Hickman
Fred Goldberg and Rosalie Weisman Goldberg
Michael and Beth Hawkins

Leona Jacobs '51
Ronald Jacobs

Jack Jones, grandfather of Charles '15 and Christopher Jones '17
John and Bernie Griffin

Jerome Judge
Michael and Beth Hawkins

George Kaffey, brother of Zephanelene '15 and Zipporah Kaffey '17
Fred Goldberg and Rosalie Weisman Goldberg

Marian LaVigne, alumni parent and grandparent
Anonymous
Steve and Yvonne Benson
Roger and JoAnn Bertrand
Gregory and Lora Blevins
William Busch
CenBank
Daniel and Gretchen Eckes
Mark and Victoria Eckes
Steven and Gretchen Eckes
Craig and Judith Freeman
Ardell and Barbara Gilb
Grand Marais State Bank
Green Pro, Inc
Evelyn Gross
Frederick and Vicki Gross
Brandon and Colleen Guest
Charles and Kay Haecherl
Patrick and Jennifer Hennessy
Thomas and Kathryn Hentges
Mary and Thomas Herman
Gary L. and Debra Jensen
Gregory and Kathleen Jordan
Willis and Margaret Knudsen
Ina LaVigne
John and Jo Ann LaVigne
Michael and Kathleen LaVigne
Nicolas and Barbara LaVigne
Lucia and William Leck
James and Elaine Loaney
Ryan and Susan McCabe
Michael and Roxanne McGowan
Jerry and Jane Noyce
Craig Paskvan
Gary and Judy Peterson
Thomas and Susan Peterson

Kevin Phernetton
Mark and Susan Jondahl Prok
LaVergne and Lester Raskob
Patricia Ratelle
Richard and Jane Reinholdz
Rick and Maureen Rendahl
Wynette Rova
James Roy
Ione Swanson
Robert and Mary Anne Swanson
Stanley and Cynthia Veeker
Elizabeth Jondahl Wolfe

Paula Lex, mother of Mark Lex

John and Gail Bertossi
Dan Bowler
Susan and Robert Cipolle
Fred Goldberg and Rosalie
Weisman Goldberg
Michael and Beth Hawkins
Dianne Numelin

Margaret Mankey, alumni parent

Carol and Sean McNamara

John McPherson '91

Mary McPherson

Jim Nelson, spouse of Jeanne

Warner Nelson '61

Richard and Susan Jacobson
Jeanne Warner Nelson
Dianne Numelin
Janet and Joseph Scheinost
Norma Scherer

Mary O'Rourke '40, mother of Mary

O'Rourke Wickersham '71

John and Nancy Selleck

Marie Periolat, mother-in-law of

Mary Periolat '67

Gail and John Bertossi
Susan and Robert Cipolle
Carrie Smith Conway
Stanley and Helen Heider
Richard and Susan Jacobson
Jeff and Janet Johnson
James and Mary Kaster
William and Nancy Koster
Thomas and Laura Lammert
Dianne Numelin
Mary Fran O'Keefe
Robert and Janice Reinhardt
Joseph and Janet Scheinost
Norma Scherer
Rosella Seiwert
Kathleen Shaughnessy
Mary Smith
Kathryn and Thomas Sullivan
Sharon Wilson
Brian and Pamela Woyda

Barbara Preston

Laurie LaVigne

Bill Quinn

Anonymous
Larry and Cathy Farley
Roger Godin
Ed and Jane Griffin
Mark and Marg Hanna
John and Mary Harrington
John and Victoria Helgeson
Duane Kieffer
Norma King
Sandra Kirk
John and Penny Matiska
John and Chris Matiska
Minnesota Hockey, Inc.
Kenneth and Mary Moen
Linda Olson
Don Quinn, Sr.
Don Quinn, Jr.
Larry and Yvonne Quinn
Mike and Diane Quinn
Thomas and Mary Quinn
Watson Quinn
James and Diane Sarosiek
Jim and Mary Jo Smith
John and Annette Wahl
Barbara Zurek

Helen Reiss '50

Hans Reiss

Ron Risvold '62

Anonymous

Marie Fouree Russ, mother of

Connie Fourke

Fred Goldberg and Rosalie
Weisman Goldberg
Michael and Beth Hawkins

Jim Ryan, alumni parent

Michael and Molly Carson

Patricia Shannon, grandmother of

Patrick '06, Michael '08 and Laura '14

Shannon
George and Margaret Johnson

Barbara Uschold Anderson's mother

Michael and Beth Hawkins

Katie Weiler '88

William and Judith Weiler

Rosemary Whelan '38

Staff of Benedictine Health System

A Knight for All Seasons Supporters

Benilde-St. Margaret's is more than a school; it is a community. Our Knight for All Seasons auction plays a vital role in fostering the sense of community and reinforcing the ties between fellow parents, alumni, faculty and staff, and friends of BSM. Additionally, this event provides vital funds to the school's operating budget each year. Last year, our Knight for All Seasons auction provided general operating support for the school as well as tuition assistance for our students. We are grateful for the individuals and organizations that contributed to making our evening such a success.

Individual Supporters

Anonymous
Andrew Alberts
Steven and Laura Alexander
Mark and Robin Allen
Geoffrey and Kathleen Allen
Daniel and Mary Ambre
Andrew and Kelleen Amighi
Mary and Marc Andersen
Marc and Molly Anderson
Steve Anderson
Greg and Lisa Appelfhof
Douglas and Susan Arndt
Don Aslett
Charles and Paula Baker
Michael and GERALYN Barone
John and Cheryl Besse
Greg and Cindy Bichler
Jennifer and Mark Biglow
Jacqueline Bilski
Peter and Lizabeth Birkeland
Robert and Elizabeth Birney
Archie Black and Jane McDonald Black
Nancy Blessing
Peter and Rebecca Boosalis
Lynn Bottge
Maura and Peter Brew
Robert and Susan Burns
Robert and Marney Buss
Veronica Champion
Edward and Judy Cannon
Joel and Alexandra Cannon
Stephen and Collette Carras
Thomas and Corinn Cella
Douglas and Pamela Christensen
George and Annie Cleveland
Carol Coburn
Phillip and Mary Jo Cole

John and Brenda Coleman
James Commers and Catherine Flaherty
Corrina and Paul Conley
Thomas Conlon
Scott and Michele Conlon
Daniel and Sharis Cooley
Doug and Ann Cooley
Jay and Terri Cope
Richard and Teri Corbett
William and Pam Cottrell
Richard and Kristine Coughlin
Robert and Susan Cron
James and Mary Cron
Christopher and Ingrid Culp
Kim and Carol Culp
Tom Dahlin
Patrick and Michelle Daly
Keenen and Kerstin Dammen
Marvin and Margaret Danielski
George and Carol Daum
Richard and Mary DesLauriers
Terrence Diaferio
Kevin and Kathleen Dillon
Thomas and Lindi Dillon
Michael and Lisa Doyle
Jerry and Nancy Driessen
Daniel and Janet Dryer
Leon and Margaret Duda
John and Kelly Duffy
James and Meghan Dunbar
Matthew Dunn
Brian and Susan Dunn
John and Caron Dwyer
Mark and Deborah Eckerline
Paul and Kathryn Ehlen
Timothy and Cynthia Ehlen
Conrad and Kristina Ehrmantraut
Pius and Sarah Eigenmann
Jack and Molly Emmer
Richard and Michelle Faber
David and Vicki Fagerlee
Douglas and Marie Falls
Al Fan and Susan Wollan Fan
John and Jennifer Feltl
Richard and Pauline FitzGerald
Joseph and Stephanie Fitzgerald
Mark and Teresa Fleischhacker
Ann Rukavina Fleming
John and Deborah Flood
Robert and Catherine Ford
Thomas and Karla Fournier
Philip and Lisa Franklin
Ted and Mary Freese
Daniel and Catherine French
Stephen and Jennifer Frenz
Todd and Marcia Friesen
Barrie Froseth and Maeve Murphy
Michael and Marie Gallagher
Daniel and Susan Gallaher
David and Miriam Gannon
Tanya and Michael Garvis
Alan Geiwitz and Mary McMahon
Jerome and Patricia Gilligan
Andrea and Daniel Gionet
Michael and Anne Goldstein
Christopher and Norah Gondeck
Jane and John Goodrich
John and Laura Graham
John and Nancy Greer
Matthew Griebie and Jeannie Larson
Philip and Katherine Guettler
Neal and Julie Guggemos
Mark and Rosemary Guidinger
Thomas and Kelley Gunkel
Sue and Patrick Hamilton
Joseph and Joan Hammell
Thomas and Joyce Hansen
Hugh and Mary Hanson

Robert and Kristen Harnett
 Thomas Haselman and Sally Sibbitt
 Robert and Monique Hathaway
 Matthew and Jacqueline Haughey
 Thomas and Kim Hayes
 George and Lucille Heenan
 Jack and Kate Helms
 Thomas and Kathy Hewitt
 Christopher and Elizabeth Hickok
 David Higgins and Mary Ann McNeil
 J. Michael and Colleen Hoch
 Joseph and Shelly Hoesley
 Frank and Laura Hogan
 James and Susan Holly
 Leonard and Barbara Hones
 James and Kim Horton
 Gregory and Kelli Hueller
 Mike and Leslie Jablonski
 James and Sarah Jacobs
 Klaus Jung and Jody Japs-Jung
 John Jarvis and Beth Perro-Jarvis
 John and Angela Jerabek
 James and Mary Jetland
 Dennis and Linda Johnson
 Todd and Jennifer Johnson
 Keith and Kris Johnson
 Todd and Jan Johnson
 James and Maureen Johnson
 Paul and Mary Johnston
 Christopher and Sheila Jones
 Karla Jones
 Rodney and Laura Jordan
 Tom and Elizabeth Jungst
 Janet Karvonen
 Bradley and Julieanne Kautzer
 Terry and Lois Kehoe
 Thomas and Renee Keller
 Jerry and Sandra Kelley
 Ray and Amy Kelly
 Mike and Kathryn Kerfoot
 Edward and Lauren Kernan
 Joseph and Sally Kline
 Bard and Erin Knudsen
 Mark and Therese Koller
 James and Mary Kay Kopp
 Michael and Judith Koski
 Roman and Nancy Kozak
 William and Kathleen Kozlak
 Mark and Sheila Kraemer
 Richard and Barbara Kramer
 John and Julie Labosky
 Michael and Ellen Lamb
 George and Karen Landis
 John and Nancy Lawlor
 Dietrich and Corinne Lawrenz
 Peter and Monica Lawyer
 Craig and Rebecca Leiter
 Michael and Cynthia LeJeune
 Jean and Scott Levin
 Scott Lichliter and Nancy Hays
 Mary Beth and Albert Liekhus
 Paul and Christine Lilienthal
 Meghan Lind
 John and Mary Lindquist
 Thomas and Candy Link
 Sean and Tracy Lumpkin
 William and Lisa Lundberg
 John Ankeny and Virginia Lupo
 Rudy and Cathy Luther
 Lynn and Dennis Lynch
 Christopher and Joan Lyon
 John and Susan Mack
 Frank and Margaret Magill
 Mike and Karen Maney
 Scott Marshall
 Michael and Carrie Martino
 George and Rita Marx
 Peter and Colleen Mavroulis
 Daniel and Jeanne McCarthy

Terence and LuAnn McCormick
 Andrew and Ann McGinn
 John and Joanne McGinty
 Michael and Jody McMahon
 Kevin and Lisa McMenamy
 Carol and Sean McNamara
 John and Jane McNeill
 Timothy and Carol McShane
 Patrick and Lori McTigue
 John Meeker and Kitty McClintock
 Mark and Cindy Melin
 Theodore and Laura Merriam
 Alan and Mary Meuwissen
 Patrick and Amy Minea
 Robert and Linda Mlnarik
 David and Anne Moen
 Michael and Teresa Mogensen
 Denis Monroe and Patricia Weller
 Stephanie and Jeronimo Monzon
 Gary and Julie Moore
 Terrance and Anne Moore
 Fr. Tim Morin
 Thomas and Jeanne Morizio
 Michael and Jennifer Moroz
 William and Jennifer Mullin
 Joseph and Mary Mulvehill
 William and Carolyn Murnane
 Patrick and Jennifer Murry
 Cary and Regina Musech
 Marc and Lisa Nanne
 Jeffrey and Terri Naughtin
 Marilyn Nelson
 Patrick and Laura Nelson
 Phifer and Lisa Nicholson
 James and Brenda Norkosky
 John O'Connor
 Mary Fran O'Keefe
 Julie and Chris O'Leary
 Jeffrey and Laura Olejnik
 Richard and Susan Olson
 Frank and Carolyn Ondrey
 Scott and Peggy Oppenheimer
 Richard Paal and Amy Casey-Paal
 Christopher and Nancy Patton
 Michael and Mary Perushek
 George and Katherine Peters
 Jerry Pettinger and Nancy Mischel
 Kenneth Piper and Ann Ashton-Piper
 David Platt and Megan Kern
 James and Susan Pohle
 Jeanne Polaczyk
 Brooks and Margaret Poley
 Jeff and Bettina Potter
 Theresa and Peter Puffer
 Thomas Nelson and Kathryn Pyzdrowski
 Mick and Jeanne Qualen
 Michael and Jennifer Qualen
 Daniel Raether and Susan Gunderson
 Nicole Rasmussen
 Alfred and Billie Reger
 John and Barbara Reis
 Bonita and Todd Reynoldson
 David and Susan Roberts
 Michael and Linda Rocheford
 Paul and Heather Rocheford
 John and Lois Rogers
 Michael Rogers
 Patrick and Laura Rooney
 Rose Rothstein
 Paul and Kathy Rothstein
 James and Mindy Roux
 Thomas Ryan
 Mike and Leah Ryan
 Patrick and Ann Ryan
 Jon and Jennifer Salveson
 Stephen and Karen Sanger
 Kenneth Satre and Joan Stevermer
 Timothy and Colleen Sauter

Scott and Ellen Sayer
 Roger and Irma Scherer
 Kristopher and Georganne Scherer
 Mark and Heather Scherer
 Peter and Geri Scherer
 Stephen Imholte and Rachael Scherer
 Denis and Patricia Schirmers
 Perry and Anne Schmidt
 Thomas and Barbara Schmitz
 Jonna Schultz
 Gregory and Patricia Schwartz
 Jon and Maureen Segner
 Marie Herbert Seiter, CSJ
 Jeffrey and Nancy Selleck
 Larry Semler and Karen Dorn
 James and Tika Shah Petersen
 Craig and Maureen Shaver
 Henry and Christina Shea
 David and Julia Sheffield
 Gregory and Rebecca Silvestri
 Susan and Steven Skinner
 Scott and Karen Slater
 Melenie Soucheray
 Dean and Janet Sparkman
 Joseph and Deann Speltz
 Thomas and Gina Sprenger
 Lester and Kristin Stanley
 Robert and Julie Starosta
 Mike Steinhauser
 Michael and DeeAnn Stinebaugh
 Jason and Patty Studsrud
 Kathryn and Thomas Sullivan
 Joel and Pamela Sutherland
 Scott Taylor and Anne Hunter
 Alan and Barbara Tennesen
 Bob and Anna Tift
 Damian and Rosemarie Topousis
 Rick and Molly Torrance
 Larry and Nancy Trochlil
 Katie Valentine
 Marc and Mary Beth Viers
 James and Kate Vogl
 Thomas and Nancy Wallrich
 David and Lisa Walsh
 Mike and Carol Weber
 Kevin and Michelle Weber
 Robert and Linda Westenberg
 Casey and Mary Whelan
 Mark and Pamela Whitmore
 Craig Wildfang and Christine Honaas
 Douglas and Margaret Williams
 Chris Wilson
 Mark and Sarah Winston
 Robert and Ann Wolfe
 Margaret and Pat Woodring
 Tom Wright
 James Youngblut and Brenda Roth
 John Zattoni and Lynette Wheelock
 Michael and Elissa Zeman

Corporate Donors

A Place Called Home
 Alota Pilates
 Anonymous
 Anthropologie
 Apostle
 Aquatropics
 Art of Optiks
 Arts & Flowers
 Bar La Grassa
 Bergstrom Jewelers
 Biaggi's Ristorante Italiano
 Blue Plate Restaurant Company
 Brighton Collectibles
 BSM Board of Directors
 Buffalo Wild Wings, Inc.
 Bunny's Bar and Grill

Children's Theater Company
 Chipotle
 Coffee Buzz
 Convention Grill & Fountain
 Cookies By Design
 Cooper Restaurant
 Cosmos Restaurant
 Cowboy Jack's Saloon
 Craig Hallum Investments
 Crave
 Culp Family Foundation
 Eckroth Music
 Euronest
 Excel Boat Club
 Fish with Matt
 Fit Studio
 General Store
 Good Day Cafe
 Grandview Lodge
 Graves 601 Hotel
 Great Harvest Bread Company
 Half Price Books
 Hot Mama
 Hour Glass Cleaners
 Howling Wolf Embroidery
 Jax Cafe, Inc.
 Johnson Controls
 Kuhl Design & Build, LLC
 Linsk Flowers
 Manny's Steakhouse
 Max's
 Maynard's
 McCoy's Public House
 Monte Carlo Bar & Grill
 Murray's Restaurant
 Myriad Inc
 Navarre Corporation
 New Reflections Spa
 NorthCoast Restaurant
 NorthStar Lacrosse
 Nye's Polonaise
 Ocean Spa and Nails
 On Your Toes School of Dance
 Palm Beach Tan
 Panera Bread
 Park Tavern
 Peterson Portraits
 Pipka's of Door County
 Pohlad Family Companies
 Rajala Timber
 Roller Garden Skate Center
 Salut Bar Americain
 Scherer Brothers Lumber
 Schuler Shoes
 Signature Sales
 Smashburger
 Spalon Montage
 Spasso Restaurant
 Styled Life
 Sunsets on Wayzata
 Taher, Inc
 Technology Resource Group
 (TRG Capital)
 The Saint Paul Hotel
 The Wine Shop
 The Pentair Foundation
 Theater Latte Da
 Tom Conlin Photography
 Trader Joe's
 Twin City Attorneys, PA
 W Minneapolis - The Foshay
 Wayzata Eatery
 We Cater to You
 Youngstedt's Companies
 Youth Frontiers
 Yumi's Sushi Bar



Benilde-St. Margaret's

A Catholic, college preparatory school, grades 7-12

2501 Highway 100 South
St. Louis Park, Minnesota 55416
952-927-4176

Non-Profit Org.
U.S. Postage
PAID
Twin Cities, MN
Permit # 2277



Annual Report Enclosed

**Benilde-St. Margaret's
School
cordially invites you
to attend**

**The 2012
Hall of Honor
Celebration
and
Awards Dinner**

Hall of Honor



Monday, January 30, 2012

Reception 5:30-6:30 p.m. • Dinner and program 6:30 p.m.

The Hall of Honor is a recognition program designed to consistently and publicly honor the heritage of BSM, salute the dedication and service of the volunteer community, and reward the professional longevity of employees.

The 2012 honorees have made a significant contribution to the lives of many in the Benilde-St. Margaret's and greater community. Your attendance at this dinner and awards ceremony would be a meaningful tribute to them.

Red Knight Leadership Award

Al Geiwitz and Mary McMahon
Tim Jump
Frank and Randi Pintens

Volunteer Service Award

Cathy Luther
Geri Scherer
Deann Speltz

Distinguished Alumni Award

Barbara Corbett Kormeen '61
Dennis Dale '63
Mark Vande Hei '85

Twenty-Year Club Inductees

Maura Daly '82
Bob Tift '71

Special 50-year Recognition

Betty Rosenow

For ticket information and reservations by January 20,
contact Mary Fran O'Keefe, 952-915-4360 or mfokeefe@BSMSchool.org.