

Benilde-St. Margaret's

ANNUAL REPORT ENCLOSED

An inside look at the *Knight Errant*
BSM's student-run publications



CROWN & SHIELD

Fall 2015 | Volume 42, Number 1

PRESIDENT'S | LETTER



Dr. Gyolai and his daughter,
Knight Errant Varsity Writer Grace '17

Benilde-St. Margaret's

A Catholic Co-educational School, Grades 7-12

2501 Highway 100 South, St. Louis Park, MN 55416
952-927-4176

President | Kevin Gyolai, Ph.D.
Senior High Principal | Susan Skinner, Ed.D.
Interim Junior High Principal | Claire Shea, Ed.S.
Chair, Board of Directors | Archie Black

Crown & Shield Managing Editor |
Mary Fran O'Keefe, mfokeefe@BSMschool.org
Writers | Rachel Kuzma Olson '93, Leslie Jablonski,
Katie DesLauriers Sullivan '99, Jeremy Cramer



The BSM crest:
Veritas: truth; **Pietas:** holiness, dutiful conduct;
Scientia: knowledge; **Crown:** St. Margaret's;
Knight: Benilde; three Benedictine Crosses

The *Crown & Shield* is published by the
Benilde-St. Margaret's (BSM) alumni department
for graduates, students, families and friends of BSM.
Please send news and photos (at least 1 mb in size)
to alumni@BSMschool.org.

Delivery Notice
As part of our continuing efforts to reduce waste,
we have limited the delivery of the *Crown & Shield*
to one per household. If you hear that we have
inadvertently left someone off the list, please contact
us at alumni@BSMschool.org.

Over the last year we've begun to articulate a new emphasis for Benilde-St. Margaret's School, problem solving. This new emphasis is expressed in a slogan: *Striving Together to Solve Problems that Matter.* Built upon our core college-preparatory curriculum, our emphasis on problem solving grew organically from within the faculty and staff, and enhances the student experience with a focus on next generation skills, skills that our students need to be successful at their next educational level and in life. We think of these skills as competencies for the digital age: faith, creativity, problem solving, global citizenship, collaboration, communication, ethics, accountability, and action. *Striving Together to Solve Problems that Matter* permeates our school; it's how we teach and learn. The primary student outcomes for this initiative are: providing a differentiated student experience, developing individualized solving journeys, and creating servant leaders with real impact. These outcomes help drive the student journey which culminates in Signature Learning Experiences, which are truly exceptional educational experiences that students chronicle in their digital portfolios and share with the world.

Problem solving and Signature Learning Experiences can be found across all grade levels and throughout the curriculum. However, in this edition of the *Crown & Shield* you will learn about the BSM journalism program, which has, and will continue, to provide Signature Learning Experiences for many students. Whether in print, magazine, or online format, the students of the *Knight Errant* demonstrate their passion and skill as journalists.

This edition of the *Crown & Shield* also finds us basking in the spiritual sunshine of Pope Francis' visit to the United States. Francis has proclaimed the upcoming liturgical year the Jubilee Year of Mercy. Benilde-St. Margaret's School put the Pope's call for mercy into action by choosing mercy as the annual scripture theme (Luke 6:36). The scripture theme is incorporated into the entirety of the student experience and into the lifeblood of the school. We are truly blessed to be able to leverage the gospel message of mercy as an instrument to help our students grow in their faith and develop a closer relationship with God.

God bless you,

Kevin Gyolai, Ph.D.



ON THE COVER | Representing the Knight Errant staff are: (l-r) Photography Editor-in-Chief Keenan Schember '16, Varsity Writer Elizabeth Ambre '17, Graphic Designer Tyler Matson '17, Magazine Editor-in-Chief Rachel Lyons '16, and Videographer Elyse Vandersteen '17.

Features

Knight Errant	4
Athletic Hall of Fame	6
Mo Perry	8
David Lang	10
Father Tim Kilkelly	12
Annual Report	27

Departments

BSM Buzz	14
Bulletin Board	15
Alumni News	16
In Memoriam	19
Alumni Album	20

Stay Connected:



Watch the Knight Errant come to life by holding your phone up to the cover photo! Simply download the free Aurasma app, create an account, follow BSMknighterrant.

A Day at the Office



Features Editor Carolina Jimenez '17 explains her idea to a group of reporters

If you were to walk into room 153 on any given school day, you might think the group of students casually sitting at desks, writing on the whiteboards and arguing in circles have taken over the class—which they have.

The *Knight Errant*, or KE for short, deems itself a student-run publication and diligently follows this title. Students not only choose to participate in the class, but they also edit, write, photograph and design all three of the publication platforms: the newspaper, the website and the quarterly magazine.

In a usual classroom setting, students are presented with information, take notes, study, and are normally tested on what they have learned. In each of the five journalism classes at Benilde-St. Margaret's, students have to find information themselves; it isn't given to them in a Power Point presentation or a textbook. They have to conduct interviews, pay attention to what is going on around the community, listen to their fellow classmates and teachers, and even follow BSM-associated Twitter or Facebook accounts to find material to report on.

Besides invaluable research skills, students in the journalism program are also presented with the opportunity to work in a pseudo-professional environment: one that mimics what it is truly like to work for a journalistic publication or corporation. This allows students to develop interpersonal skills while producing something that is meaningful to them and the student body. "It has taught me how to create a sort of harmony in a work space with people who [I] wouldn't normally choose to work with or students I have never met before" said KE writer **Abby Letscher '18**.

The professional atmosphere is created by allowing students to take control over the leadership and problem solving that creating a publication requires. "When there is a situation or controversy, the advisers gather a team of students to work through the problem, instead of fixing it for them," *Knight Errant* Adviser **Kari Koshiol '99** said.

The Knight Errant, a student-run publication where students not only choose to participate in the class, but they also edit, write, photograph and design all three of the publication platforms: the newspaper, the website and the quarterly magazine.

Keenan Schember '16 seems to have a humorous point to make with Online Editor-in-Chief Sarah Letscher '16 and Adviser Kari Koshiol '99.



Not only have the journalism students reported on real news and have had to face obstacles in their experiences, they have been the fuel which has ignited the rapid growth of news sources which the publication is currently using. The readership of the *Knight Errant* has expanded tremendously with the addition of the online publication; everyday the website receives hundreds of visits from all over the world. It has become a model website for high school newspapers across the country.

The *Knight Errant* has developed enough interest to begin a third publication: The Knight Errant Quarterly, or KEQ, which KE publishes four times a year. Funded by an anonymous donor, KEQ pushes the Knight Errant staff's dedication to writing, photography and especially graphic design. The KEQ received a Pacemaker nomination in 2015, its first full year of publication. In fact, every year since 2009 all three publications have received highly-regarded awards at national and state levels.

Though readers experience the finished publications of the *Knight Errant*, few are aware of the process that takes place to make the newspaper, magazine, and website happen. We usually meet as an entire staff to brainstorm potential content—this means writers, editors, photographers, graphic designers and videographers are all in one room collaborating.

Next the staff gets to work. Writers and photographers are assigned one or two stories and have deadlines that they must meet. Videographers start filming and the designers start laying out pages. The writing students must schedule interviews, write a rough draft, and have their story edited by their section editor. The editors look over the story and prepare to either post it immediately to the website, or make sure all of the elements of the story are ready to be laid out onto a page for one of the print publications.

The entire process is executed by students. From every photograph to all of the fun quizzes to making sure everything in the newspaper is perfectly laid out and grammatically correct, the

students who make up the five *Knight Errant* class sections are the ones that make every publication happen. Not only are they working on an award-winning publication, but they are working to build a greater connection with the entire Benilde-St. Margaret's community.

"The *Knight Errant* provides BSM students with signature learning experiences that help them develop important next-generation skills. The KE staff produces a real newspaper with a readership that extends beyond the student body...[and] has been recognized for their outstanding work at the national level; only a few schools can make that claim," Senior High Principal Dr. Susan Skinner said.

Knight Errant is more than just a fun elective class or an outlet to allow students to publish their own journalistic works; it is a way for students, faculty, staff, alumni, and the greater Twin Cities community to come together through the interviews conducted, photos taken, stories told and even awards won.





ATHLETIC Hall of Fame

The BSM Athletic Hall of Fame celebrated its third year of inductees on October 2. It is a wonderful community event honoring the outstanding athletic accomplishments and contributions to the athletic history and traditions of St. Margaret's Academy, Benilde High School, and Benilde-St. Margaret's.

Mike Karbo was the first athletic director in the school's history. He came to Benilde in 1956 and was charged with starting a high school athletic program from scratch with 320 freshmen and sophomores. From players to equipment to opponents, Mike was responsible for all of it. The fathers of the boys and his friends were his saving grace in many areas. He did have two paid assistant football coaches and one paid basketball assistant. And, Mike was also the physical trainer for football and basketball. In 1960, four short years into the program, his football team tied for the CCC Championship, the only blemish on their record a 13-13 tie with Cretin. Mike was the beginning of a great Red Knight athletic legacy. His family accepted the award given posthumously.

Another contributor from Benilde's early years is **Dennis Dale '63**, a Red Knight who earned his letter in the pool. Dennis swam all four years at Benilde, and was captain his senior year. Then he went on to swim at the University of Minnesota where he graduated as an All-American. He also coached the Golden Gophers who, under his guidance, won seven big ten titles, and that includes nineteen straight top-15 finishes at the NCAA championships. Dennis was voted Big Ten Coach of the Year six times, and was inducted into the 'M' Club Hall of Fame. Currently, Dennis is the assistant coach for men and women at Indiana University. He has a reputation as one of the NCAA all-time great coaches, a first-class individual who puts his swimmers' needs above all else.

Each year we present the Al Blasing Award to the outstanding senior male athlete who best exemplifies the ideals of the Red Knight. That award was first presented in 1964 to **Mike Perry '64**, a letter winner in football, basketball, and baseball. Perry was a half back for the Red Knight football team and earned MVP status for his role on that team. As part of two state championship basketball teams, Mike was noted as the always-dependable defensive weapon. Although Mike was also on the state championship basketball team, the football MVP continued his athletic endeavors on the gridiron. He played for the legendary Coach John Gagliardi at St. John's University. As a Johnnie he was a member of the '65 national championship team. Mike earned All-Conference honors in '66 and was the captain of the '67 team.

Jim Flick '64 tested the football and baseball waters as a freshman and sophomore at Benilde but concentrated his efforts on the basketball court for his remaining two years. He played on both the '63 and '64 state championship teams and was captain of the '64 squad that went 18-4. He was also voted the MVP of the 1964 Catholic School State Tournament. After the season, then-coach Bill Haben retired his number. In later years number 23 was awarded to players who best exemplified Flick's character, leadership, attitude, determination and teamwork. Only six other players have worn that number. Flick continued his basketball career at St. John's University where he played for three years before a basketball-ending injury. In his senior year as a Johnnie he coached the freshman team.

Joan Kowalsky '77 was voted most athletic by her classmates and was the winner of the 1977 Athena Award given to the outstanding senior female athlete. Joan began her high school athletic career at St. Margaret's Academy where she shared her athletic ability with cross country, basketball, and track. At BSM she continued with cross country, spent a season on the softball team, but concentrated on basketball. She was a star on the girls' basketball team that "almost" won the first official girls' state tournament in 1976. Earlier in that year the Red Knights had defeated St. Paul Central 49-47, but the tables were turned in the tournament and the Minutemen prevailed with the exact same score 49-47. Joan went on to play at the University of Minnesota and Mankato State.



The 2015 Athletic Hall of Fame inductees celebrated at a luncheon on Friday, October 2: (l-r) Bob Madson '77, Rachael Drazan Malmberg '04, Dennis Dale '63, Amy Busch Gjerde '90, Mike Perry '64, Dana Mucha '92, and Nick Schneider '01. Jim Flick '64 and Joan Kowalsky '77 were unable to attend and the late Mike Karbo was represented by his family.

Bob Madson '77 definitely controlled the Benilde and Benilde-St. Margaret's court. A 3-year letter winner in tennis, Bob was captain of the team and a conference champion in his senior year, posting a 14-1 record and leading the team to a Don Bosco title. His Red Knight journey led him to a 4-year varsity career at the University of Minnesota, culminating in a Big Ten Championship in 1981—the first title for the Gophers since 1933! Bob also competed at the professional level, nationally and internationally, as a certified USPTA tennis professional from 1981-1994. In addition, he was a volunteer coach for the Red Knights in the 80s, a high school coach for 12 seasons, and a volunteer coach for the Arthur Ashe Youth Tennis and Education Center in Philadelphia.

In 1989 **Amy Busch Gjerde** '90 was featured in *Sports Illustrated* for setting a national record for career goals in girls' soccer. That magic number was 203. Amy was a pioneer of sorts as the first state tournament for girls' soccer did not occur until Amy was in 4th grade. She was definitely on the cutting edge in a sport that was growing by leaps and bounds. Checking the state records today, Amy is still on top with the most goals in a career and the most points in a career. Of course it's not much different in the Red Knight record books. However she does add most goals in a season (44) to her list of honors and is second in career assists. Amy continued her successful soccer career at Yale University where she was a 3-time letter winner.

Dana Mucha '92 was a 3-sport standout. The year began with volleyball where she earned All-Metro, All-Region, All-Conference, and MVP awards. She continued in the gym for the winter season where she once again earned a number of All-Conference and MVP distinctions. Spring found her outside on the track, specializing in one of the most grueling races – the 300 meter hurdles. Dana represented BSM at the state meet in the hurdles and as a leg of the 4x400 relay and earned All-Conference, conference championships and school records in that sport. Dana continued her sports career at Iowa State. Dana was an Academic All-Big 8 selection and a look at volleyball statistics reveals her name among the top ten in many categories. Not quite ready to leave organized sports behind her, Dana played one year of pro-indoor volleyball.

Runner **Nick Schneider** '01, a high school All-American, earned six state championships in his Red Knight career, set school records in cross country and five individual track and field events, and set state records at 1600 and 3200 meters. His 1600 meter record was only eclipsed this past spring – 14 years later! He was the inaugural winner of the Track Runner of the Year in 2001. Nick continued his running career on a full scholarship to Duke University. There he was a 2-year, 3-sport captain in cross country and indoor and outdoor track. He was Duke's Outstanding Freshman Athlete in 2002, a 10-time All-ACC selection, a 13-time All-East selection, a 3-time Duke cross

country MVP and a 2-time Duke track MVP. In his senior year at Duke he earned the Ed Stenberg Award which was given to the top overall track performer.

Rachael Drazan Malmberg '04, was a Red Knight, a Bulldog, a Gopher, and an international hockey player. She led her BSM team to two state championships, was a Ms. Hockey finalist, and was All-everything – All-Conference, All-State, All-Tournament. After two years at UMD, Rachael joined the Gophers. She earned countless All-WCHA and WCHA All-Academic honors as well as All-Big Ten and Academic All-Big Ten distinction. She was also the recipient of the Rider Award presented to the athlete most involved in community action and volunteering. Rachael was a 3-time member of USA Hockey's Under-22 team. She earned a silver medal when she played for the United States national team at the 2006 Four Nation's Cup and a gold medal with Team USA at the 2008 IIHF Women's World Championships. On her final hockey journey she participated in the Qwest Tour with the US national women's team in 2009-2010.

Nominations for the 2016 Hall of Fame will be accepted through May 15, 2016.

Go to www.BSMschool.org/athleticchalloffame to download the nomination form.

Only with your help can we truly honor those deserving a Hall of Fame induction.

MO PERRY | What We Can Learn From Her Work

BSM taught this talented alumna that it's possible to **carve out your**

Volunteering has been a priority in Mo Perry's life. It's a value that was instilled in her when she was a student at BSM and volunteered all four years at the Hammer Residences. It's not always easy to coordinate schedules, even when we like to think we're flexible. Such was the case for me when I was arranging to meet Mo, a 1999 graduate, to talk about this article. Actually, it wasn't difficult to plan our meeting, we just worked around Mo's time that was set aside for her biweekly volunteering at Meals on Wheels.

I was impressed. Did I mention that she joined the Peace Corp after graduating from college?

And that was just the start of being super impressed by this extremely talented and gifted BSM alumna and one of two National Merit Scholarship recipients from her graduating class. Perhaps you recognize Mo's name, as you should. She's a frequent contributor to *Minnesota Monthly*, *Mpls. St. Paul Magazine*, *City Pages*, *Midwest Home Magazine*, *Live Better America*, and she had a monthly column in the

now defunct METRO Magazine. Newsflash: the August issue of the prestigious magazine, *The Atlantic*, featured an article called "The Challenge of Being Transgender in a Nursing Home" written by Mo. Enlightening, to say the least.

I asked Mo what she likes most about writing and she said curiosity. "It's the defining feature of writing. Stay curious, identify what you're curious about and find ways to explore and communicate it." Mo concluded that the end result is enlivening and fulfilling.



own path.

Mo is not only a writer; she's also an actor. And guess what? She believes curiosity is the common thread between her two passions. Why? Because acting is more social, yet writing is more solo. But they're connected by the thread of curiosity and each has its own way of allowing the writer or actor to explore the question and then communicate the answer.

And Mo certainly has experience in both fields. She embraced acting as a freshman at BSM when she was the youngest cast member in "Bye Bye Birdie" and her last BSM appearance was playing the aging diva in "42nd Street" during her senior year.

Fast forward to today and you'll find Mo in shows at the Guthrie Theater and you might catch her in healthcare commercials, playing a character in Murder Mystery dinner theaters or in diversity training videos for corporations and law enforcement agencies. Multi-talented, for sure.

When I asked Mo about problem solving, she said she's learned how to live and work authentically in a society that doesn't necessarily place a lot of value on the financial rewards of creative talent. She's survived without the traditional "day job" and has been able to master the ability of doing what she wants to do without being



Mo as Mrs. Watson in the Children's Theater Company production *Mercy Watson to the Rescue*

financially and emotionally frustrated.

Mo has learned how to constantly think of what's next so that she can continue to keep her fate in her own hands. BSM taught this talented alumna that it's possible to carve out your own path and not necessarily conform to the world's expectations.

"Putting your fate in your own hands is exhilarating." Spend a half hour with Mo and you will completely agree.

What's Next?

In his own words, it was a "long and winding career path" to get where he is today.

What do you do when you're 30 years old and have revolutionized the world of underwater robotics, done a TED Talk that's been viewed over 1 million times, been invited to the White House, are a published author, have been written up in the New York Times, founded and run a million dollar business, and have led sailing adventures all around the world? If you're **David Lang '03**, you get working on the next big thing. David has spent the last four years designing and piloting underwater drones and just successfully funded his newest venture, OpenROV Trident, through Kickstarter. He fully funded his goal in just a few hours and has surpassed it many times over since then.

In his own words, it was a "long and winding career path" to get where he is today.

While at BSM, David's favorite class was Ecology with Mr. Leiseth. He recalls, "It was wonderful. He was such a sweet man and cared so deeply about the natural world. That rubbed off on me. He assigned us *Sand County Almanac* to read, and that's still one of my favorite books."

After graduating from BSM, David crossed the border to U of W – Madison and studied business. After college he got a job working for an investment company wearing a suit, sitting in a cube and crunching numbers. He hated it. He quit after a few months and moved to San Francisco with a dream of sailing around the world. Admitting that this idea was "sort of crazy" because he had never been on a boat before, he went for it anyway in search of an adventure and a more interesting life. Begging his way into a job at a sailing school that he read about in Outside Magazine, he ended up working there for four years. During that time, he learned to sail, led sailing trips all around the world and even

lived on his own little sailboat in the San Francisco Bay. He read constantly and "learned more on that boat than I ever did in college – mostly because I just pursued whatever interested me."

One of those interests was underwater robotics. He and his friend, Eric Stackpole, began building an underwater robot in Eric's garage after hearing rumors of gold buried in an underwater cave in Northern California. They never found the gold, but this dynamic engineering duo was now in motion. They shared their ideas online and that initial project became OpenROV, which is now one of the largest volume underwater drone manufacturers in the world. They employ 11 people and are growing quickly. This day job doesn't involve a suit or tie. One day he's looking at new designs for future projects, then reviewing video from a past dive with great white sharks at the Farallon Islands. He travels a lot. This October he embarked on an expedition to Papua New Guinea on a National Geographic research vessel.

Like most great success stories, it wasn't always an easy road. David admits there were dark moments over the past few years. There were times he was broke, living out of his car and quite alone. "When you're going through that, it's very hard to believe in yourself and what you're working on. You really start to doubt your self-worth. Luckily, I really enjoy working with my co-founder, Eric. We stuck it out, mostly just for the sheer joy of working together." Looking to the future, David thinks "We're at the beginning of a new golden age for science and exploration. The tools are getting so good, so fast. Our company and community are in a prime position to help make that future a reality. That's exciting to me."

"I just pursued whatever interested me."

One of those interests was underwater robotics. He and his friend, Eric Stackpole, began building an underwater robot in Eric's garage after hearing rumors of gold buried in an underwater cave in Northern California. They never found the gold, but this dynamic engineering duo was now in motion.

Despite his storied success and worldly adventures, David is still a Minnesota family-guy at heart. When asked what he's most proud of, he answers, "My little brothers, both turned out to be absolutely fantastic people. If I played any small, role-model-ish part in that outcome, then that's the best thing I've done." Who inspires him? "My mom and dad. They're such incredibly strong and kind people. I want to be like them when I grow up."

David's Book: *Zero to Maker*
Ted Talk: www.ted.com/speakers/david_lang
Kickstarter Page: www.kickstarter.com/projects/openrov/openrov-trident-an-underwater-drone-for-everyone
Company Website: www.openrov.com



BSM Grad Reflects on Life's Path

Tim Kilkelly, a 1977 alumnus of Benilde-St. Margaret's High School, celebrates his 25th year of priesthood this year. Kilkelly, a member of the Maryknoll Fathers and Brothers, works with the "Maryknoll China Project," a program within the Maryknoll organization supporting education for members from China.

The Maryknoll program, designed to bring lay leaders, ordained priests, and religious sisters to the United States for advanced studies, is designed to provide an opportunity for leadership and theological education that might not be available in their home country. Maryknoll China Project works with the Graduate Theological Union in Berkeley, California, St. John's University in Collegeville, Minnesota, and the Institute of Religious Formation in Chicago.

The Catholic Church in China faces unique challenges, as every member must register with the national government, which does not recognize the ecclesial authority of the Pope. Because of this, China has the official, state-sanctioned Church, and an "underground" Church, loyal to Rome. Most of the members of the Maryknoll program are members of the registered Church. Kilkelly points out that in spite of the difference, programs of study are the same, and the need doesn't change. Kilkelly and the other Maryknoll members are working to expand the program into preaching and advance curriculum within Chinese seminaries themselves.



Father Tim, coordinator of Maryknoll China Educators and Formators Project, is pictured with Sr. Janet Carroll, M.M., consultant of the Project, and sisters from China who were in New York to study. The sisters from China are Sr. Clare Zhang, Sr. Jean Qi, Sr. Clara Zhang, Sr. Paulina Feng, Sr. Emma Sun and Sr. Maria Jiang.

Kilkelly recruits the best students who can work in another language, English, to take part in the U.S. leg of studies. Following Pope Francis' encyclical, *Laudato si*, areas of formation with regard to care for the environment are being expanded upon. China's increasing industrial growth and commercial base present a unique need for this type of education.

Kilkelly credits his time studying philosophy and theology at BSM as having a major influence on his desire to go into missionary work. On a cross-cultural trip to St. Lucia, coordinated by his soccer coach, Hank Scheinost, Kilkelly

was invited to spend the afternoon with a family the coach knew through being a volunteer with the Peace Corps. This experience presented Kilkelly with an exposure to a new climate, new foods, and people who taught him a different culture and language. Through that trip, Kilkelly reflects on the experience of being transformed and encouraged to look beyond just the environment.

Kilkelly appreciated that teachers at BSM were "there not just for a job." Care was shown in getting to know students, understand their worldviews, and challenge them in ways that led to growth. Through trips like the St. Lucia experience, and a class on world religions, an appreciation for other cultures invited Kilkelly to be invited to the "inner journey," and make a commitment to the wider world. "Value to learn was stressed, but Catholic vision of knowledge and skills at the behest of something bigger than yourself."

BSM BUZZ



Seniors **Sam Rocheford** and **Kate Herrmann** were selected as homecoming king and queen at coronation ceremonies on Monday, September 28. Other seniors on the court were **Bailey Adams**, **Anna DeGiulio**, **Kendra DuLaney**, **Lilly Effertz**, **Grace Hedin**, **Sam Baker**, **Sky Brown**, **Macartan Commers**, **Frankie Gormley**, and **Peter McCague**. Emcees for coronation were seniors **Mikenzie Woog** and **Mason Deterding**. The underclassman representatives were juniors **Lillian Smith** and **Zane Winston**, sophomores **Bre'Miah Hollie** and **Jerry Song**, and freshmen **Ellis Gunter** and **Joe Benning**.

Ricky Floyd '17 was a *Star Tribune* Prep Athlete of the Week following his 459 yard, seven touchdown performance in the Red Knight's 63-36 victory over St. Louis Park. Floyd, who did not play most of the 4th quarter, was five yards shy of the state record. On Saturday, October 24, Ricky broke the single-season rushing record of **Shane Fox '05**.

The girls' soccer team returned to the state tournament after a one-year hiatus by capturing the 5A section championship with a 3-0 victory over Blake. Team members include: back (l-r) **Assistant Coach Anne Erickson**, **Maria Van Hove '17**, **Brooke Ferrer '17**, **Brooke Stanley '16**, **Lauren Goldstein '16**, **Maren Noble '17**, **Lauren Gustafson '16**, **Elizabeth Ambre '17**, **Ingrid Lundberg '18**, and **Taylor Lowenberg '17**; middle (l-r) **Vivian Shinall '18**, **Taylor Gelling '16**, **Julia Stelljes '16**, **Claire Van der Heide '18**, manager **Allison O'Neil '16**, and **Head Coach Scott Helling-Christy**; front (l-r) **Ana Vigil '16**, **Claire Grazzini '18**, **Sophie Roux '16**, **Emily Schmitz '16**, **Aleksa Tataryn '16**, **Crystal Sorem '16**, **Madison Stoks '18**, and **Amanda Cassidy '19**.

Senior **Aleksa Tataryn** was named the Class A Ms. Soccer. Aleksa was also 1st team All-Metro and All-State. **Sophie Roux '16** joined her on the All-State First Team and **Emily Schmitz '16** was on the All-State Second team.



STATE
SOCCER
CHAMPS

Red Knight Football
Section Champs



Soccer player **Macartan Commers '16** earned First Team All-State honors and **Griffin Ehlen '16** was named to the All-State Second Team.



National Merit Students

Bulletin Board

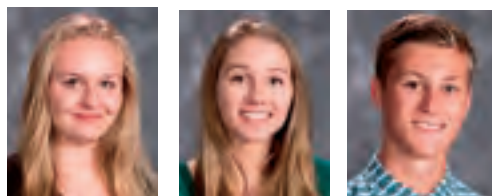
Junior high student council officers this year are co-presidents **Ryan Gregerson '20** and **Walker Niebergall '20**, vice-president **Jack Rigley '20**, secretary **Ronan Brew '20**, and treasurer **Noah Allen '21**.



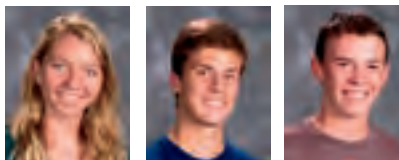
On Thursday, October 22, first amendment activist Mary Beth Tinker visited Benilde-St. Margaret's. This year marks the 50th anniversary of her courageous demonstration of free speech. Tinker spoke to various groups throughout the day and then was joined by a panel of local experts from media, communications, and law for a question and answer session. The panel included Dr. Susan Skinner, senior high principal. Tinker was invited to BSM by **Josie Ross '17**.

The freshman class elected their officers for the coming year. **Jalen Anderson** will serve as president and **Mary Youngblut** is the vice president. **Abby O'Neil** is the new secretary and **Jamison Battle** was elected treasurer.

The **Red Knight football team** earned the Section 5AAAA title with a 47-7 victory over Richfield. This is the first trip to the state tournament since 2007. At state they were defeated by the defending state champion Becker Bulldogs.



National Merit semifinalists | Erin Falk, Sarah Letscher, Isaac Welsch



Commended | Amanda Kautzer, Sam Rocheford, Charlie Wolfe

Six seniors have been recognized by the National Merit Scholarship Corporation for the 2015-2016 school year. The Red Knights have three National Merit semifinalists and three commended students. The semifinalists are **Erin Falk, Sarah Letscher, and Isaac Welsch**. **Amanda Kautzer, Sam Rocheford, and Charlie Wolfe** are Commended Scholars.

Derek Drees '07, a pitcher-third baseman-outfielder on the baseball team, was the lone junior named to the All-Siebert team after leading a fall league of top Minnesota-area high school players in hitting (.435) at the University of Minnesota.

Twin sisters **Taylor and Paige McLeod** are the 2015 State Girls Tennis Class 2A Doubles Champions. They defeated teams from Hopkins, St. Louis Park, Jefferson, Apple Valley, and Eastview on their way to the section title. At state they defeated girls from Northfield, Prior Lake, Mahtomedi, and St. Cloud Tech. Paige and Taylor are six-year members of the BSM tennis team.

STATE
TENNIS
CHAMPS



Alumni Children's Christmas Party

Sunday, December 13, 9:30-11:30 a.m.

Santa will be in the commons/cafeteria to visit with your children and BSM students will be ready with games, activities and treats. RSVP to Mary Fran O'Keefe at mfokeefe@bsmschool.org. Please include the names and ages of the children coming.

Alumni Hockey

Thursday, December 24, 9 a.m.
St. Louis Park Recreation Center

Reunion Information 1 or 6

If your graduation year ends in a 1 or a 6, 2016 is your reunion year.

Please contact Mary Fran O'Keefe at mfokeefe@bsmschool.org or 952-915-4360 to discover one of the many ways you can help with your class reunion.

Jr. High Musical

Shrek, Jr.
March 4 and 5, 7 p.m.
March 6, 2:30 p.m.



Hall of Honor Celebration and Awards Dinner

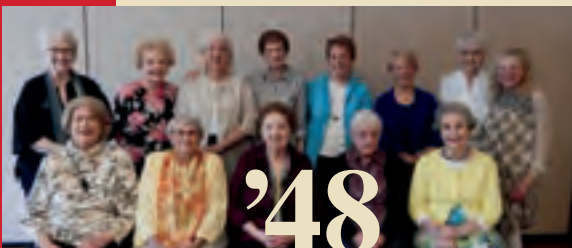
Monday, February 1, 2016

See back cover for more information.



1947

Classmates from '47 had an opportunity to visit at a recent gathering: (l-r) **Patricia Farkell Welna, Sr Marjorie Myers SSND, Pat McMahon Schwab, Mary Joan Tracy Larsen, Virginia Martin Morris, Theresa Kenney Sherry, Jeanne Jaunty Christianson, Pauline Stausberry Logelin, and Mary Alice Cavanaugh Frawley.** ◀



1948

Classmates met for their bi-yearly gathering at Elsie's on October 8: back (l-r) **Nan Winslow Fraser, Jeanne McLaughlin Barron, Joyce Nelson Saucier, Rosemary Kleve Madden, Therese Miller Haak, Dolores Doty Young, Bobbi Wilson Kenney, and Jane Dziewior Christopherson;** front (l-r) **Phyllis Cotten Fahey, Gerry McMullin Grazzini, Sheila McNeive Anderson, Jean Maas Ward, and Pat Irwin Mertes.** ◀



1950

Reminiscing about their days at St. Margaret's Academy, classmates from 1950 celebrated their 65th reunion at Jake's City Grille on September 17. Back row (l-r) **Marilyn Baron Zastrow, Mary Heckman Gaffney, Nancy Amireault McNamee, June Ess Hiller, Collette Stenberg Peterson, Carol Wintheiser Archambo, Dorothy Koetz Selbitschka, Rita Battaiola Spinal, Susan Erlougher Sicora, Kathleen Mullin Gratzek and Margaret Campion Jaeger;** front (l-r) **Veronica Mortl Fashant, JoAnne Spillane Anderson, Donna Terlouw Wallander, Patricia Dougherty Cassidy, Donna O'Keefe Schiefelbein, Claire Nagel Ready, and Carol Wren Shallbetter.** ◀

1955

A reunion luncheon at the Crowne Plaza Hotel in Plymouth was enjoyed by many St. Margaret's alumnae who gathered to celebrate 60 years since their graduation. ◀

1960

Classmates from St. Margaret's Academy met for a luncheon at Jax Café on September 8 to celebrate their 55th reunion: front row (l-r) **Mary Haglund LaCrosse, Judy Merchant Nelson, Michele Perry Ward, Phyllis Wagner Hughes, and Mary McGuire Forpahl;** standing (l-r) **Sharon Varner Pelant, Mary Jo Steinberg Bonin, Gail Felicetta, Carol Piazza Marnell, Jane Fischer Clark, Judy Drury Mulryan, Mary Ann Handzel Hinderman, Tallis Hardey Bania, Kathy Moore Potoski, Renee Toussaint Scherman, Carol Novicki Soderberg, Pat Vashro Trombley, Jane Murry Marrin and Renee Smith-Miller.** ◀

1962

A small group met for lunch at The Kenwood on August 7: seated (l-r) **Colette Korab Monette, Mary Cay Longley;** standing (l-r) **Jo Ann Prasky Lewandowski, Judy Brenny Sarff, Mary Pattock, Donna Ross Butler, Rita Wolf Culshaw, Kathy Keating, and Ginger Moore Glenn.** ◀

1965

A 50-year reunion brought SMA classmates together for a tour of the Upton Avenue SMA building, a tour of Benilde-St. Margaret's school and a gathering at The Woman's Club on August 22. Attendees on the Benilde-St. Margaret's tour stopped for a photo in front of the St. Margaret's Academy doors that stand in the halls of BSM: (l-r) **Mary Kay Warner Verkennes, Kay Lampe Craighead, Linda Tilbury Borovansky, Mary Beth Chew Miller, DeeDee Wendt Preiss, Maxine Stenger Hallberg, Chris Beck Shannon, Sue Caspers Poetzel, and Ann Risch.** ▼



Classmates enjoyed an afternoon of golf at Brookview Golf Course on Friday, August 7, followed by a happy hour at Park Tavern. The fun continued on Saturday night with a reunion celebration dinner at BSM: (l-r) **Dick Wald, Tim Munkeby, Terry Blaylock, Rick Johnson, Jim Rinck, Jim Gallagher, Terry O'Neil, John Smith, Dan Babcock, George Burke, Tom Gwiazdon, Dick Johnson, Jim Springrose, and John Qualy.** ▲

1970

Brad Peterson has retired from the faculty of The Ohio State University after 35 years of service, the last nine as the Chair of the Department of Astronomy. Brad intends to remain active in research and writing. He was recently appointed to the NASA Advisory Council, NASA's highest-level advisory committee, for which he chairs the Science Committee. He also serves on the James Webb Space Telescope Advisory Committee for the Space Telescope Science Institute.

A 40th reunion reunited friends from across the country when the Class of 1970 gathered on September 19 for their reunion: (l-r) standing **Mary Dempsey Santiago, Kathleen Kelly, Anne Nichols Baumann, Jakki Peters Seidenstein, Joanne Kerzeka Tinkham, Joanne Wesley, Denice Vashro Dess, Janet Kaster Broin, Jane Hogan Barin, Mary Weber Nord, Pat Burke, Susan James-Morrow, Nancy Somers.** Front row (sitting) **Donna Truax Gears, Patty Gagnon, Marguerite Schultz, Coleen Kosloski, Diane Grendahl Stoddard, Terrell Lamb, Mary Jellison, Linda McNamara, Sue Knaeble.** Not pictured, but very much present: **Peggy Bauer and Jeanne VonHoff.** ▼



1972

Greg Sommers won the second annual Joe Harvey "With-A-V" Memorial Open, named after a wonderful classmate and friend, Joe Harvey. **Jim Dalsin, Rob Keiser, Joe Boller, Keith Johnson and Greg Blevins** were the losing participants but a good time was had by all. ▶



1975

Classmates from 1975 gathered at the home of John Cich to celebrate their 40th reunion: 1st row (l-r) **Eric Turnquist, Terry Carr, Tom Sweeney, and Norton Hatlie;** 2nd row (l-r) **Bill McDowell, Jackie Green Neva, Mark Ryan, Denise Franzen Boczek, Paul Shallbetter, Miriam Olson, Monica Larson Binion, Fran Dwyer Sather, Susan Moskalik Flynn, Mark Murray, Jo Anne Battaglia Anderson, John Cafarella, and John Cich;** 3rd row (l-r) **Joe Penaz, Kevin Smith, Pat Walter, Barb Lydiard Binsfeld, Bill Cottrell, Mark Boller, Mike Viehman, and Russ Schumer;** back row (l-r) **Greg Kemp, Joe Davenport, Tim Grant, Mike Kuzara, Tim Oberuc, and Tony Sauter.** ▼



1980

Celebrating 35 years since graduation, the Class of '80 marked this milestone with a celebration at Sherm's back bar at Bunny's Bar and Grille on August 22. ▼



1980 Judy Mailhot Graziano, Ricci Graziano, Julie Ortler Palach and Mary LeSage Armstrong



1980 Greg Brink, Jim Gagnon, and Steve Offerman



1980 Patty Spartz McMonigal, Marcia Warren Herron, Robin Bennetts Kehoe and Rose Bowler Guidinger

1985

Mary Aubart and her husband, **Steve Schaefer**, are excited to announce the birth of **Lucia Grace** on July 27. Big sister **Emma (2)** was waiting at home for Lucia. Mary works for Accenture and Steve is a patent attorney for Fish and Richardson.

1985

Classmates gathered for Mass at BSM and a reunion celebration at Rojo's Mexican Grill on Saturday, August 8: Photo 1 (l-r) **Andrea Rossman Kessler**, **Curt Mortenson**, and **Anita Stevens Sasser**; Photo 2 (l-r) **Anne Marrs Huber**, **Mary Igel Trudell**, and **Shannon Anderson**; Photo 3 **Joe Pouliot** and **Terry Hughes**. ▼



1990

Aster Café was a great setting for a 25th reunion. Classmates and friends even watched the Aquatennial fireworks over the river: Photo 1 (l-r) **Brad Fayfield**, **Sarah Bangert Randolph**, **Melissa Lenmark Reller**, and **Maureen McManus Decker**; Photo 2 (l-r) **Peter Lynch**, **Jeff Hillins**, **Dawn Hillins** and **Eric Tennesen**; Photo 3 (l-r) **Lily Bennett-Everett**, **Keely Doyle**, **Bill Kruse**, **Rebecca Hathaway-Hall** and **Carin Carraher Hockett-Hedeon**. ▼



1993

Elyse and **Kelly Gallagher** are proud to announce the birth of their daughter, Maeve Ryan, on August 18. The Gallaghers now have two children, Rory (1 ½) and Maeve. Kelly works at The Steinhauer Group and the Gallaghers live in Minneapolis. ▶

1995

Mollie Igo and **Luke Utting** were married on May 30 at the Basilica of St. Mary's followed by lunch at Vincent's A Restaurant and a reception at Brit's Pub. Luke and Molly reside and work in Minneapolis. ▶

Classmates celebrated their 20-year reunion at Crave downtown on September 12: front row (l-r) **Mark Yantos**, **Kelly Deeney Roberts**, **Meghan Walbran Maresh**, **Anne Sumangil**, **Kim Baker Hagstrom**, **Jennifer Gabriel Weissman**, **Amy Dunleavy Oberemdt**, **Beth Weaver Bauer**, **Kathy Jelnick**, **Kathy Keane**, **Matt Just** and **John Lukas**; second row (l-r) **Andy Zimney**, **Molly Bottiger Foley**, **Chris Leising**, **Joe Leitschuh**, **Jessica Peterson Hackman**, **Jennifer Tauer Johnson**, **Bill Reinhardt**, **Aaron Wheeler**, and **Jeff Kuebelbeck**; third row (l-r) **Mike Seppelt**, **Casey Andrus**, **Andy Zimney**, **Brian Foley**, **Joe Stratig**, **Justin Vinge**, **Ben McLain**, **Joe Peterson**, **Matt Stiehm**, **Todd Lang**, **Rick Renckens**, **Corey Swan**, and **Mollie Igo Utting**. ▼



Casey Andrus and his wife, Anne, welcomed son **Bruce** into the world on April 11. The family lives in Minneapolis and owns and operates Honey and Rye Bakehouse in St. Louis Park.

Angela Frank Downing and husband Jon welcomed their fourth child, **Elliott James**, on December 26, 2014. The couple's other children are **William** (4), **Julia** (7) and **Charlotte** (2006-2011). The Downings live in Brooklyn Park where Angie is at home and Jon is the chief technology officer at Impact.

1997

Laura Hanson Conlon and husband Peter welcomed **Benjamin Thomas** on Aug. 13. Big brother **William** is 5 and sister **Olivia** is 3.

1998

Susan de Pazos and her husband, **Luciano**, visited the Basilica and St. Peter's square when they traveled to Rome recently. In the Sistine Chapel a priest came in and offered a blessing, a rare occasion according to Vatican officials. ▶



1999

Meghan Lind DesLauriers and **Mike DesLauriers '05** welcomed **Jane Elizabeth** on Aug 13. Mike works as an audit manager at Grant Thornton LLP and Megan is an attorney at Dorsey & Whitney.

2000

Allison Luse Riter and her husband, **Trent**, are pleased to announce the birth of **Cecelia Frances** on July 21. Cece has lots of Red Knight attention from her uncle **Kiel Luse '03** and aunt **Andrea Luse '14**.

2001

Nora and **Charlie Daum** are excited by the addition of **Henry Charles Daum** born on July 21. Charlie works for a Boston-based company called Altenex. The Daums live in Minneapolis.

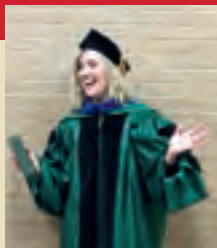
Rachel Kemp Waldner and her husband, **Joe**, are pleased to announce the birth of **Elizabeth Grace** on October 21. Big brother **Will** (2) is excited to have a baby sister. Rachel and Joe both work for Boeing and the Waldners live in the St. Louis, Missouri, area.

E.J. Baldwin Merrill and husband **Andy** are happy to announce the birth of their daughter, **Olivia Anne**, on July 17. E.J. is an independent consultant and Andy works at Optum. The Merrills live in Chanhassen.



2002

Justine Chatterton received her Ph.D. in psychology on May 15 from the University of North Texas. She will be completing a postdoctoral fellowship at Institute of Living in Hartford, Connecticut. ▶

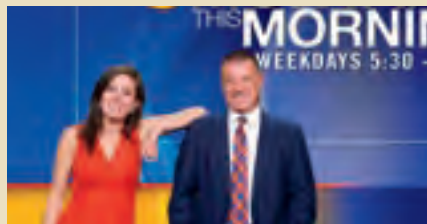


Cate Lombardo and **John Dugan** would like to share the exciting news that Mark Michael Dugan was born on July 3. He joins siblings Anna (4) and Luke (2) at home. The Dugans live in Corcoran.

Erica Lundberg and Evan Bell were married in the Dominican Republic May 26. Joining the wedding festivities were **Luke Kaster '99**, **Jillian Periolat Kaster '02**, **Anna Lundberg '97** and **Andrew George '02**. ▶

2003

Jamie Leary was recently hired as a reporter/anchor for CBS in Denver, Colorado. This will end her four years with CBS in Bozeman, Montana, where she was a morning show anchor and reporter. ▼



2004

Kate Fristrom Jacobson and husband Chris are happy to announce the birth of Ellie Raven on January 14. Ellie's big sister Lucy (5) is excited by the new addition to her family. Kate stays home with the children and Chris is employed at Studio Next.

Calley Kingston Roers and her family recently moved to Independence, Minnesota. Brecken (2) and Grady (3) are settling into their new home. Derek Roers is a sales representative and Calley works at PrairieCare as a child and adolescent therapist

2005

Joe and **Hannah Smith Helms** are pleased to announce the birth of Henry Thomas on July 16. Hannah is an early childhood special education teacher in the Minneapolis public schools and Joe is in private equity with Goldner Hawn Johnson & Morrison.

Jill Hance Miller and her husband, Jason, are proud to announce the birth of twin daughters on June 27. Morgan Jean and Kennedy Ann are home with their mom while Jason is busy at Boston Scientific.

Jessie Frenz Radtke and her husband, Baylor, welcomed Aven James on July 4. Aven's older sister Anzi is 2.

Steven Schwartz and wife Jenessa are the proud parents of Thurston David Schwartz who was born March 1. The family lives in Minnetonka.



Allana Hayes and Justin Walsh were married on August 16, 2014, at Carlos Creek Winery in Alexandria, Minnesota. Justin works as a financial manager at Connexions Loyalty and is co-founder of Omni Brewing Co. in Maple Grove along with Zach Ward, husband of **Megan Mura Ward '05**. Allana is the special education district program facilitator for Minneapolis public schools. The couple lives in Medina. ▼



Nick Pernula and **Mary Ruane** were married at Our Lady of Grace on August 1. Mary is a third grade teacher at Our Lady of Grace. ▲



Jordan Portnoy and Matt Mikulay were married on June 20 in Minneapolis. Jordan graduated from the University of St. Thomas and is employed by Target as a product manager. Matt graduated from the University of Minnesota Carlson School of Business and is a CPA, currently employed by Valspar as a senior financial analyst. Jordan and Matt are pictured with **Claire Mikulay '10**, Marnie Mikulay and **Tom Mikulay '73**. ▶



Michelle Smith and Eric Scott were married on June 13 at Grand View Lodge in Nisswa, Minnesota. Michelle is a school psychologist within a local school district and Eric is a business administrator for a medical private practice. The Scotts live in Flagstaff, Arizona. ▼



Alex Zeman and Sarah Van Nevel were married at St. Therese of Deephaven on June 5. BSM alums **Mike DesLauriers '05**, **Mitch Koch '05**, **Bennett Lang '05**, **Isak Tranvik '05**, **Elle Zeman Stefan '08** and **Greg Zeman '11** also participated in the celebration. Alex works as an IT recruiter at Recruiters of Minnesota and Sarah is a publicist at Target Corporation. Alex and Sarah live in Minnetonka. ▼



2006
Katie Forschler decided to return to school to get her real estate license. She is currently working for Edina Realty.

Dan Knauff passed all three levels of the Chartered Financial Analyst exam. Dan is a senior equity research associate with Citi in San Francisco.



2007
After graduating from the University of Montana MS program in natural resources and Tulane University of Law, **Alyssa J. Leary** joined Droel, PLLC in Bloomington. Her primary practice areas will be all facets of renewable energy, real estate, and construction law. Allison graduated magna cum laude and Order of the Coif from Tulane University Law School where she was a member of the Tulane Law Review. ▲

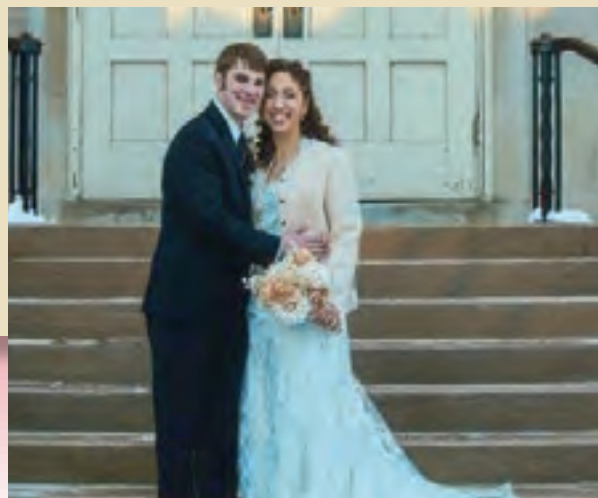
Molly Leary is a certified respiratory therapist and obtained her degree from St. Catherine University. She is currently a sales manager and brand representative for the North Face and a ski patroller in the winter. ►



Kate Sefton and Joe LoCascio were married on June 27 at the Basilica of St. Mary in Minneapolis. Kate and Joe currently live in St. Louis Park. ▼



2008
Rachel Tondryk and **Joe Hubly** were married on December 27, 2014. Rachel is a Spanish teacher at Benilde-St. Margaret's. She and her husband were married at the Church of Saint Mark in St. Paul. ▼



2009

Eric Schilling and Hannah Dolan were married on May 2, at the Church of St. Patrick in Edina. A reception at The Minikahda Club followed. Red Knights in the wedding party included best man **Trent Bailey '09** and **Ryan Houlihan '09**. Eric graduated from St. John's University and is a first lieutenant in the United State Army. Hannah is a graduate of the College of St. Benedict. Eric and Hannah live in Colorado Springs, Colorado, where Eric is stationed at Fort Carson. ►

2012

Casey Nightingale qualified for the College Swimming Coaches' Association of America (CSCAA) Scholar All-America honor list at the University of St. Thomas for the spring semester of 2014-2015 and was named ALL-MIAC for diving last season.

2013

Several members of the St. Cloud State University (SCSU) wrestling team competed in an Athletes in Action tournament in Moldova during the summer of 2015. The tournament is part of a camp that Stephen Barrett (Oklahoma State national champion in 1977) has organized for the past 12 years. SCSU Wrestler **Jarred Oftedahl**, won a first place medal in the tournament. Fellowship of Christian Athletes and Athletes in Action have worked in partnership the last four years to put on this camp for wrestlers and teach life changing principles from the Bible. St. Cloud State won its first-ever NCAA Division II wrestling championship in 2015 and also gained its fourth consecutive NSIC championship with a 17-2, 8-0 NSIC record. ▼



2014

University of Wisconsin Superior volleyball player **Leah Nightingale** was named to the Wisconsin Intercollegiate Athletic Conference Scholastic Honor Roll for 2014-15.



In Memoriam

John Anderson
Husband of Renee Raskob Anderson '67

Larry Aubart
Father of Michael '70
Peter '73
Paul '81
Mary Aubart Schaefer '85

Anne Bisson
Mother of Ron '85
Stephanie Bisson Belseth '86
Mary '88
John '92
Katie '94

Margaret Bromschwig
Mother of Marlana '71
Marta Bromschwig Galnick '73
Kurt '78

Jerry and Ursula Choromanski
Parents of Jennifer Choromanski Shaltz '69
Lynn '72
Jane Choromanski Norris '74
Mary Choromanski Faust
Paula Choromanski McCrossan
Anne Choromanski Swenson
Caroline Choromanski Portall

DeAnn Dankowski '82

Harry Drahos
Father of Greg '68
Cookie Drahos Dumas
Cheri Drahos Dixon '78

John Eichler
Father of Michael '82

Pauline Ellison – past faculty

Ed Grotz
Father of Linda Grotz Johnson '71
Colleen Grotz Webber '72
Deanne Grotz Madden '79

Joan Sheehan Gruidl '42

Neil Hemsey '60

Charles Hills Hallman '61

Arlene Hanly
Mother of Brian
Tom
Debbie Hanly Knaeble '84
Pam Hanly Onnen '85
Danielle Hanly Pregler
Jennifer Hanly Anderson

Carl Barton Hedges
Father of Catherine Hedges
Schneeman '75
Stephen '77
John '79
Tim '82

Jeffrey Hennen
Brother of Fred - faculty

Sue Herber
Mother of Bill '71
Mary '73
John '79
Martha Herber Burns '82
Bob

Marguerite Doherty Julkowski '51

Patricia Keeler
Mother of Matthew '86
Molly '90

Christopher Kluis '03
Brother of Katy '05
Anne '11

Robert Law – past staff
Father of Ric '61
Jan Law Michels '63
Laurie Law Dvorak '68
Barbara Law-Howieson '71
Tom '74

Cathy Luther
Mother of Rudy '06
Melissa '12

Marilyn Theisen Marben '44
Mother of Marilee Marben Morrow '70
Laurie Marben Jenniges '71
Ed '72
Donna Marben Bongertman '74
Julie Marben Zins '75
Mary Marben Krogman
Joann '79
Patricia Marben Riley '81
Bernadette Marben Bartusiak '83

Pat McClellan
Mother of Meaghan '92
Mara McClellan-Williams '95

William Scheid '10
Brother of John '97
Bridget Scheid Moroney '99

Judy Stormoen Voronyak '61

Alumni ALBUM

Homecoming—Katie Oberstar Ugarte '99 and Chris Ugarte '98 met up with president Kevin Gyalai and some of his family at the football game on October 2: (l-r) Kevin Gyalai, Leo Gyalai, Claire Gyalai, Katie holding Stella Ugarte, and Chris.



Wedding Celebration—Mollie Igo and Luke Utting celebrated their wedding day with fellow alums: sitting (l-r) Tim Igo '63, Luke Utting, Mollie Igo Utting '95, and Karen Igo Prawdzik '58; standing (l-r) Kelly Deeney Roberts '95, Corey Swan '95, Rich Rolles '88, Shannon Igo Rolles '87, Tom Cella '90, Corinn Tennesen Cella '95, Casey Andrus '95, Jerry Maher '64, and Judd Zulgad '88.

Red Knights in London—2008 grads Madison Delaney, Mark Muston and Courtney Johnson reconnect for a Red Knight reunion in London.



June Wedding—Michelle Smith '05 and Eric Scott celebrated their wedding with many BSM alums: front (l-r) Nick Parsons '05, Sophie Olson, Shane Harrington '05, Michelle and Eric, Allison Bolgrean '05, Kaitlin Sundberg '05, and Levi Lowell; back (l-r) Andrew Spilseth, Leigh Threlkeld '05, Ryan Shabel '05, Sara Shabel, Evan Schlecker, Alex Pope '05, Kathleen McCoy, Ian Campbell '05, Joe Helms '05, Hannah Smith Helms '05, and Jared Brown '05; not pictured Kellyn McNaught '05 and Devin Harrington '05.



Alumni Celebration—Alex Zeman '05 and Sarah Van Nevel had the support of many alums on their wedding day in June: back row (l-r) Eric Bigham '05, Chris Lappen '05, Kevin Roddy '05, Mitch Koch '05, Jared Brown '05, Phil Davis '04, Tom Powers '05, Parker Brook '05, Jeff Twidwell '05, and Ryan Ball '05; middle row (l-r) Greg Zeman '11, Sean Ryan '05, Betsy Brooks '05, Matt Mikulay '05, Rob Dorsey '05, Allison Bolgrean '05, Hannah Smith Helms '05, Joe Helms '05, Bennett Lang '05, Nick Davis '09, Patrick Johnson '07, and Chad Beltrand '05; front row (l-r) Isak Tranvik '05, Kevin Rockwell '05, Thomas Cloyd '05, Elle Zeman '08, Sarah and Alex, Mike Abts '05, Rudy Luther '06, Maddie Davis '06, Mike DesLauriers '05, Meghan Lind DesLauriers '99, Amy DesLauriers Crowther '01, and Katie DesLauriers Sullivan '99.

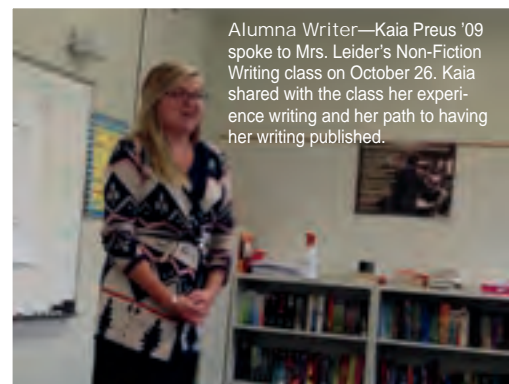


South Bend Outing—Gracey Scott '17 and Maria Satre '17 were in South Bend to visit Sofie Scott '15 who is a freshman at St. Mary's College. Sofie was recently elected class president at St. Mary's.

Summer Wedding—The wedding of Allana Hayes and Justin Walsh on August 16, 2014, brought together classmates and friends from the Class of 2005: (l-r) Mallory Morris, Megan Mura Ward, Sarah Lynch, Allana Hayes, Lizzy Lefebvre, Peter Lucke, Anne Rondoni, Martha Hawkinson '10 and Tess Hayes '10.



Benilde Class of 1965—Jim Lucas and Pat Christiansen posed for a photo during their reunion festivities.



Alumna Writer—Kaia Preus '09 spoke to Mrs. Leider's Non-Fiction Writing class on October 26. Kaia shared with the class her experience writing and her path to having her writing published.



Red Knights Reunite Out East—Friends reunited during parents' weekend at Washington and Lee University in Lexington, Virginia, on October 2: (l-r) Robbie Lance '13, John Bowman '13, Gunnar Bowman '15, Jack Tucker '13, and Will Tucker '15.

Alumni ALBUM



BSM Badgers—Katie Segner '14, Christine Lager '15, and Natalie Chevalier '15 are members of the University of Wisconsin dance team.



Fall Festival—Jordan Maddaus '15, soccer player at Grinnel College, was in Appleton to take on the Lawrence Vikings for the Fall Festival. Annie Dillon '15, a freshman at Lawrence, watched the game and had an opportunity to chat with Jordan.



Athletic Hall of Fame Luncheon—Alex Willson, Bill Sweeney and Mike Sitek celebrated with '64 classmate Mike Perry at his induction into the Athletic Hall of Fame.



Alumni Soccer—Former BSM soccer players turned out for a fun game against varsity players on August 13: back row (l-r) Sam Lantz '09, Dan Quealy '09, Nick Wegleitner '07, Matteo Potter '13, Jake Sherman '13, Abe Fortier '15, Taras Tataryn '14, Austin Keller '13, Brandt Sylvestre '08, Drew Coulombe '14, Sam Smogard '14, coach Dave Platt '85; front row (l-r) Joe Gillis '84, John Carney '10, Kevin Lebahn '12, Aidan O'Driscoll '15, Danny Tift, '14, Eddie McHugh '15, Parker Sipes '15 and Bright Rwagatare '15. Not pictured John McMonagle '80 and Dan Cooley '96.



Red Knight Groomsmen—The wedding of Jordan and Matthew Mikulay '05 on June 20 brought together friends from the Class of 2005: (l-r) Jared Brown, Joe Helms, Ryan Schabel, Matthew, Ian Campbell and Drew Slominski.



Red Knight friends and teammates paused for a picture with award winners Amy Busch Gjerde '90 and Dana Mucha '92 at the Athletic Hall of Fame luncheon on October 2: (l-r) Molly Halverson Christensen '92, Loryn Mucha Follrath '88, Kara Zwolensky Hayne '92, Amy Busch Gjerde '90, Amy Jo Reinhart Hyde '89, and Dana Mucha '92.



Birthday Gathering—Friends and Classmates from 2005 gathered on April 28 at Sociable Cider Werks to celebrate the birthday of Allana Hayes Walsh: Megan Mura Ward, Allana, Anne Rondoni, Bryn Thompson, Nick Hittler and Peter Lucke.

Alumni Cross Country—Alums joined current BSM team members for a 1-mile run at Bassett Creek Park on August 22: (l-r) Tom Fleming '77, Mack Nevells '14, Andy Renier '14, Erik Hoeg '08, Annie White '14, Chris Koch '79, Joe Binnish '85, Audrey Jewett '15, Tim Jewett '80, Paul Rocheford '81, Michael Wendt '13, Kristine Wendt '05, and Maura Daly '82. Not pictured, Karen Hill Galvin '87.

Right: Janelle Krawczak Kummrow '95 brought 4-year old daughters Felicity and Evie to join the fun.



Providing for students

The legacy of Patricia “Pat” Anne Rosinek SMA 1942



For 72 years, St. Margaret's Academy graduate **Patricia Ganley Rosinek '42** was proud of being an alumna of SMA. Her dedication to SMA, and later Benilde-St. Margaret's, was evident by her continued attendance at the SMA Day and the tea that brought together SMA graduates to remember their days at the mansion in downtown Minneapolis or later at the “new” school on Upton Avenue North. When she passed on, Rosinek remembered BSM with a significant estate gift, which was dedicated to the SMA Endowed Scholarship Fund.

Rosinek, known affectionately to her friends as Pat, was born and raised in Decatur, Illinois. Later, the family moved to Minneapolis and she enrolled at SMA. She graduated in 1942.

After graduation she attended the Minneapolis Business College, earning a secretarial degree. Pat then went to work as a secretary at what became Control Data. Eventually, she became the executive

secretary to multiple chief executive officers. Her passion for St. Margaret's Academy was evident by her life-long collection of SMA rings and pins, and her proud display of her 1942 diploma and yearbook.

A further look into the life of Rosinek reveals a philanthropic commitment to her community. She was recognized by Unity Hospital for volunteering over 10,000 hours at the visitors' desk. You would find Pat sitting behind the desk, with her Yorkie, answering questions about patients' rooms and directions within the hospital. A lifelong member of St. Charles Borromeo parish, she donated to that and several other city churches and organizations.

Those who knew Pat remember her as a caring friend and cheerleader for St. Margaret's Academy. “What was always apparent to me was that Aunt Pat was so proud of being a SMA grad,” recalls her niece Kathleen Ganley. “Her relationship to her classmates and to SMA, even after the merger with

Benilde in 1974, was extremely important to her. She looked forward to reunions and events where she could remember time at the mansion.”

Today, Rosinek's gift and legacy will make the education she valued possible for future female BSM students. Rosinek and other generous donors to the school's endowment funds make it possible for hundreds of thousands of dollars in tuition assistance to be provided to students each year, a wonderful everlasting legacy for which we are extremely grateful.

When you have a question about making a gift – outright or planned – to Benilde-St. Margaret's School, the advancement team is ready to answer. Please call us at 952-767-9341 or e-mail us at lborcharding@bsmschool.org.



Benilde-St. Margaret's

ANNUAL REPORT
2014-2015

Table of Contents

Letter from the Board Chair	29
Board of Directors	28
Financial Reports	30
Constituent Rolls	31
Spiritus Society	32
Parents	32
Alumni	33
St. Margaret's Academy	
Benilde High School	
Benilde-St. Margaret's School	
Faculty and Staff	
Friends	39
Corporations, Foundations, and Organizations	42
Honor and Memorial Gifts	43
A Knight for All Seasons Supporters	46



2014-2015 Board of Directors

Archie Black | Vice Chair
Brother Francis Carr, FSC
Dan Cooley '96
Susan Wollan Fan
Mark Guidinger
Kevin Gyolai, Ph.D. | BSM President
Tom Hansen | Treasurer
Peter Lawyer
Mark Lenss '74
Sheila Letscher | Chair
Meghan Lind DesLauriers '99
Penny Meier
Sister Joan Mitchell | CSJ Representative
Tricia Bailey Myhre '72
Jeff Olejnik '86
Mary Lynne Perushek
Father Michael Reding | Archdiocesan Representative
Randy Ross
Mark Scherer '86
Trisha Schirmers
Claudia Sefton | Secretary
John Stemper
Jim Vogl
Kevin Warren
Shay Wyley

A Letter from the Board Chair



Sheila is pictured with her daughters Sarah '16 and Abby '18, both of whom are on the Knight Errant staff. Sarah is online editor-in-chief and Abby is a staff writer.

Experience the Benilde-St. Margaret's community, and it becomes clear why BSM is a leading college preparatory school. My favorite BSM scripture theme of several years ago, Philippians 4:4-9, wonderfully parallels the community which BSM aspires to be for all of its students and families. In St. Paul's letter, he expresses great affection for the Philippians, encouraging them to be Christ-like and acknowledging that his salvation is connected to theirs. This connectedness echoes daily through the halls, classrooms, fields, and community that is BSM.

BSM's faculty and staff embrace this personal focus. They create an environment for learning that is, at its best, unparalleled. In his first year as president, Dr. Kevin Gyolai has supported this key BSM distinction. Importantly, he's led the creation of a detailed blueprint to continue realizing and building on the school's strategic vision, whereby students develop the capabilities they need to become problem-solvers with a solid moral compass.

With careful oversight by the administration and board, BSM remains on solid financial footing, and zeal for the school's mission is deep-seated. We continue to bolster the school's planning capacity. Careful planning enables BSM to provide approximately \$1.4 million of tuition assistance to over 200 students each year. In addition, the BSM endowment is professionally managed by an accredited fiduciary with experience in not-for-profit institutions and is invested using an appropriately diversified strategy. Disciplined growth of financial reserves has funded nearly \$700,000 in deferred maintenance projects this past year and will fund over \$600,000 of these projects this year. Finally, we remain committed to providing competitive compensation packages to retain the talented employees on which our community depends.

Looking ahead, we must tackle a number of challenges, including an increasingly competitive enrollment environment. We are blessed to have an endowment of approximately \$9.5 million and support for an Annual Fund that, with your help, raises approximately \$1.0 million each year; however, these funds fail to cover all of our families' demonstrated financial need. Building the endowment's tuition assistance capacity and continued investment in the school's strategic priorities – including investment in people, programs, and facilities – are key to the school's ongoing vitality and require our entire community's backing.

The quality of the student experience offered at BSM is remarkable. As highlighted in this publication, the *Knight Errant* student newspaper program is one of a number of offerings that are not only student-driven, but also nationally-recognized. Most notable, however, is that the entire student experience at BSM contains at its core one unifying element: developing the next generation of servant leaders and encouraging students to embrace that we are more than the sum of our parts. Better yet, the inspiration provided by BSM's faculty and staff is not limited to the classrooms. As mentors, coaches, activity advisers, tutors, and fans in the stands, they build relationships with and between students and create a special learning community.

It's been a privilege to serve as Board chair these past two years and to see firsthand what a difference your donations make. The support of each and every Red Knight community member is vital to the school's future. Your steadfast generosity is appreciated. Thank you!

Sheila Letscher
Chair

Operating Income

Tuition	14,977,750
Income from Fees	2,630,402
Annual Fund Gifts	1,009,701
Restricted Gifts	752,237
Planned Gifts	200,000
Auction Revenue	129,854
Endowment Draw	385,248
Other Revenue*	427,807

TOTAL REVENUE	20,512,999
----------------------	-------------------

Operating Expenses

Instructional	8,886,112
General Office and Administration	2,834,180
Extracurricular Activities	1,926,496
Depreciation	1,727,100
Financial Aid	1,379,163
Maintenance	1,474,602
Technology	1,264,447
Debt Reduction (Principal and Interest)	567,946
Reserves - Planned Gifts	200,000
Reserves**	252,953

TOTAL EXPENSES	20,512,999
-----------------------	-------------------

* Other Revenue primarily consists of investment income

** Reserves cover fluctuations in investments and are for long-term deferred maintenance

GIFTS UP TO \$99

GIFTS OF \$100+

GIFTS OF \$250+

GIFTS OF \$500+

Contributor

Century

Builder's

Red Knight

Giving Societies

The following pages summarize the individual philanthropic donations received by the development office between July 1, 2014, and June 30, 2015. The list details all cash and in-kind gifts given to the Annual Fund, to endowed and capital funds, to student scholarships, and to specific departments, programs, or student activities. We celebrate the contributions of our philanthropic partners with recognition at the following giving society levels:

- Honorary Level | Gifts of \$50,000+
- President's Level | Gifts of \$25,000+
- Founder's Level | Gifts of \$10,000+
- Veritas Level | Gifts of \$5,000+
- Patron's Level | Gifts of \$2,500+
- Benefactor Level | Gifts of \$1,000+
- Red Knight Level | Gifts of \$500+
- Builder's Level | Gifts of \$250+
- Century Level | Gifts of \$100+
- Contributor | Gifts up to \$99



Spiritus Society

The Benilde-St. Margaret's Spiritus Society honors alumni and friends who, through their generosity, have included Benilde-St. Margaret's in their estate or gift plans.

William Cottrell
Mary* and David Dingels
John Dupont
Peter Gilligan*
Mark and Rosemary Guidinger
Marianne Halliday*
Marlow and Roselyn Ihling*
Thomas and Sheila Letscher
Bruce and Carol Lowell
George Lyon*
Robert Moore
Cary and Regina Musech
Marilyn Nelson
Roger and Irma Scherer
Robert Speeter*

Parents

In addition to supporting their children through financing their education, many parents make a philanthropic gift to Benilde-St. Margaret's. We salute the parents of students enrolled during the 2014-2015 school year who invested generously in the school. They are listed here by giving level.

President's Level

Anonymous
Larry Semler and Karen Dorn
Kevin and Greta Warren
Scott and Jill Wine

Founder's Level

Anonymous
Anonymous
Steven and Laura Alexander
Archie Black and Jane McDonald Black
James and Mary Cron
Paul and Kathryn Ehlen
Jeffrey and Kristin Evanson
Joseph and Stephanie Fitzgerald
Arnie and Jane Gregory
Thomas and Joyce Hansen
Bruce and Paige Jensen
Peter and Monica Lawyer
Thomas and Sheila Letscher
Wade and Nancy Lykkehoy
Penny Meier
Karl and Ellen Schmidt
Russell and Lori Swansen
Karl and Teresa Tourville
John and Trudy Wilgers

* deceased

All gifts made during fiscal year 2015
(July 1, 2014 - June 30, 2015)

Veritas Level

Anonymous
Anonymous
Daniel and Mary Ambre
Paul and Corrina Conley
Jeff and Monette Day
Andrew and Lisa Duff
Jon and Michelle Engstrand
John and Sheila Folkestad
Stephen and Jennifer Frenz
Scott and Gina Gage
Mark and Rosemary Guidinger
Todd and Jan Johnson
Lee Kitzenberg
Michael and Cynthia LeJeune
Michael Lindsay and Judee Arnstein
Phong and Jacqueline Luong
Gerald Lynch and Annette Lee
Todd and Tiffany Madden
Michael and Carrie Madison
William and Carolyn Murnane
Jeffrey and Mary O'Neil
Michael Pederson and Lynn Fleming
John and Barbara Reis
Kristopher and Georganne Scherer
Mark and Heather Scherer
Peter L. and Geri G. Scherer Family Fund
of The Minneapolis Foundation
Thomas and Gina Sprenger
Jason and Patricia Studrud
Kevin and Michelle Weber
Thomas and Angie Wicks
Michael and Leslie Wille
Mark and Sarah Winston
Shay and Brenda Wyley

Patron's Level

Anonymous
Marc and Molly Anderson
Charles and Paula Baker
Jon Beckstrand and Marianne Herrmann
Chris Beutz and Julie Lautig-Beutz
Peter and Maura Brew
William and Lynn Brown
Durand and Renee Burns
Robert and Marney Buss
Scott and Louann Carpenter
Ann Dayton
Scott Dayton
Thomas and Stephanie Drees
Todd and Leslie Eberhardt
Anthony and Lora Hicks
Douglas and Julianne Hunter
Daniel and Cheryl Johnson
Bradley and Julianne Kautzer
Ray and Amy Kelly
PK Kriha
Joseph and Byoung Lee-Gilligan
Patrick and Lori McTigue
Ted & Laura Merriam Family
Michael and Jennifer Moroz
Gregory and Laureen Ramel
Randall and Gail Ross
Brian and Andrea Sattler
Adam and Mary Sellke
Delurschel and Janet Sparkman
Joseph Vochko
Bruce Wilson and Kathryn Mrkonich Wilson
Warren and Margaret Zaccaro

Benefactor Level

Anonymous
Anonymous
Anonymous
Paul and Patricia Adams
Peter and Oufree Argenta
Kenneth and Ann Ashton-Piper
Mark and Susan Austin
Kevin and Sara Ballinger
Brian and Merritt Beh
Peter and Lauren Bergsland
Steven and Patricia Bernstein
Peter and Elizabeth Birkeland
David and Katherine Bromelkamp
Daniel and Marne Brooks
John and Leslie Cadle
Ben and Patti Campbell
Gregory and Cathy Carr
James and Kimberly Cassens
John and Holly Check
Anthony and Mary Ann Clacko
Robert and Laura Clark
Kevin and Maristel Conry
David and Ann Dickey
Timothy and Diane Doppler
Timothy and Cynthia Ehlen
John and Ruth Eliason
Gerard and Tiffane Ferrer
Michael Freund
Bob and Kathryn Freytag
Barrie Froseth and Maeve Murphy
Robert and Caroline Fullerton
David and Miriam Gannon
The Gonyea Family
John and Patricia Gordon
Benjamin and Lindsay Graves
Matthew Griebie and Jeannie Larson
Neal and Julie Guggemos
Kevin and Kristine Gyolai
Hans Hagen
Karl Hedin and Nancy Mettill
Peter and Aurora Helseth
Kent and Judith Hodder
David and Nicole Hoover
Gregory and Kelli Hueler
Peter and Julie Hyjek
Rob and Julie Jacob
The Jones Family
Michael and Laurie Junker
Andrew and Amy Krane
Greg Krauska and Cindy Skack
Bradley and Jean Lance
Steve and Janet Lerch
Jim and Heidi Lindahl
Dale Lysne and Diane Loftus
John and Susan Mack
Michael and Carrie Martino
Mark and Cheryl Mathison
Scott and Ann McCague
Michael and Frances McCloskey
Mark and Cynthia Melin
Mike and Lynn Metz
Kirt and Margaret Mostrom
John and Margrette Newhouse
Patrick and Anne Olk
The Palmer Family
Troy and Lucia Paul
Thomas and Diane Philbin
James Pohle and Susan Eich
Kenneth and Amy Pucel
Steven and Jeanne Rosengren

James and Mindy Roux
Dennis and Maureen Ryan
Christopher and Sangrail Rydell
Leonardo Saavedra and Marisol Vera
Kevin and Deborah Shields
Michael and Jennifer Shinnors
Donald and Annemarie Smithmier
Lester and Kristin Stanley
Patrick and Sandra Stone
Mark and Julie Sullivan
Anthony and Katherine Tarvestad
Robert Uphus and Sonia Shewchuk
David and Victoria Vandersteen
Robert and Julie Beth Vipperman
John and Deborah Wagner
Philip and Francine Weber
James Wyvell and Elizabeth Witzig-Wyvell
James Youngblut and Brenda Roth

Red Knight Level

Anonymous
Michael and Suzanne Austin
Brian and Sandra Barry
James and Jean Becker
John and Patricia Bruer
Kevin and Kathleen Dillon
Scott and Elizabeth Dorn
Scott and Angie Effertz
Jim and Theresa Flannery
Eric and Lisa Fortney
Robert and Sarah Frost
Milton and Margaret Gardner
Gregory and Maureen Grazzini
Eric and Kristen Gregerson
Mark & Kristen Hansberry Family
Michael and Pamela Houlihan
Michael and Karmen Hoxie
Jeffrey and Nicole James
Timothy and Carol Jewett
Todd Johnson and Elizabeth Butler
Michael and Theresa Karels
The Kelley Family
Laurence and Kerry Koch
Mark and Sheila Kraemer
Pat Krieger and Jennifer Ott Krieger
Richard and Leslie Kupchella
Michael and Ellen Lamb
The Lawrenz Family
Scott Levin
Bruce and Irina Linder
Jean Lindquist
The Lowenberg Family
Thomas and Anastasia Lynch
Francis and Margaret Magill
Wade and Jill Malcolm
Curt and Lynette McLeod
David and Laura Miller
Jean Miller
Timothy and Katherine Murphy
Jeffrey and Terri Naughtin
David and Tammy Ochs
Kelsey Piquette
Mark and Carla Platt
Robert and Roxanna Plouff
Richard John and Mary Renk
Curt and Joan Reynders
Paul and Heather Rocheford
Mark and Katy Sandersen
Jon and Maureen Segner
The Sipes Family
Thomas and Diana Smith

Mark and Jolene Spindler
 Bob and Anna Tift
 Thuy Trinh
 Stuart and Andrea Turner
 Frank and Shannon Urbano
 Steven and Elaine Valerius
 Andrew and Staci Will
 Molly Wright
 John Zattoni and Lynette Wheelock

Builder's Level

Anonymous
 Anonymous
 Anonymous
 Lee and Silvia Bachman
 Lawrence and Diane Blake
 Peter and Rebecca Boosalis
 David and Sally Brinza
 Aaron and Verity Byhre
 Richard and Kristine Coughlin
 Brian and Kim Delgado
 Gerald and Nancy Driessen
 Dani and Tia Fjelstad
 Christopher and Connie Fredin
 Susan Fridley
 Daniel and Susan Gallaher
 The Galvin Family
 Mike and Tracy Gardner
 Peter and Karen Gleekel
 John and Nancy Greer
 Julie Grey
 Seth and Katherine Hannula
 Robert and Monique Hathaway
 Gregg* and Carolyn Herrmann
 Tom & Ann Hoen and Family
 Shaun and Kristin Jamison
 Thomas and Christine Janda
 David and Maureen Johnson
 Paul and Jodell Keefe
 Patrick and Teresa Kocourek
 Michael and Mary Sue Long
 Larry McDonough and Eve Kaplan
 Andrew and Ann McGinn
 John and Carol McLain
 Robert and Mary McNeil
 Ronald Michalak and Kerry Aikman
 Daniel and Emma Milliken
 Terrance and Anne Moore
 John and Kimberly Mueller
 Daniel and Amy Mugge
 Sean O'Driscoll and Trish Barry
 Chris and Rachel Olson
 Mike Paton and Katherine Grussing
 Thornton Powell and Tracey Burton
 Jesse and Doreen Puhl
 Steve and Lisa Rickman
 J.R. and Stephanie Rigley
 Tom Sadowski and Kirki Schultz
 Patrick and Ann Sauer
 Joseph and Michele Schlueter
 David and Marcy Schuh
 James and Helene Scott
 Francis and Jane Steck
 Jay and Heather Strommen
 Gregory and Helga Thielen
 Jeffrey and Barbara Thies
 Luke and Frederique Toft
 David and Julianne Turk
 Aubrey and Robin Weatherly
 Christine Zonneveld

Century Level

Anonymous
 Anonymous
 Anonymous
 Ann Anderson
 Jason and Sheila Anderson
 Carol Barry
 Daniel and Lisa Basil
 Anthony and Kimberly Baxter
 William and Laurie Beise
 Mark and Danielle Bigelbach
 Richard and Laura Bray
 Thomas and Sharon Brennan
 Kevin and Laura Brooks
 William and Leslie Byzewski
 Scott and Kristine Carlston
 Kevin Conway
 Trent Couture and Kristy Selman-Couture
 Earl and Jennifer Cutter
 Donald and Nancy Czajkowski
 Jim and Amy Dailey
 Randy and Judith Dallman
 Kervin and Kathleen Dempsey
 Leon and Margaret Duda
 Wayne and Katherine Eldevik
 Frank and Lisa Elsenbast
 Becky Erdahl
 Danielle Farrey
 James Farrey
 Glen and Mary Feyereisn
 Salvatore and Mersini Fialo
 Todd and Leslie Foster
 Mark and Maureen Frank
 Peter and Laurie Fritsche
 Florian and Katherine Girthofer
 David Gorman and Alison Forney-Gorman
 Daniel and Jane Green
 Laura Grendahl
 David Gretsich and Wendy Jacobsen-Gretsch
 Peter and Maureen Haakonson
 Gary and Whitney Hanson
 Dave and Kari Hayden
 Shaun and Sally Hendrickson
 Herschel and Lisa Herndon
 Paul and Dawn Hindrichs
 George and Leah Hoedeman
 Michael and Leslie Jablonski
 Julian and Corinna Jayasuriya
 Jason and Jill Jones
 Charles Jungmann and Jessica Dunnagan
 Richard and Sally Karlen
 Andrew and Kae Kaske
 Richard and Laurel Kroll
 Paul Krotz and Kathy Quandt
 Jim and Pat Lancaster
 Joel and Karen Latterell
 Tammy Levi
 Scott Lichliter and Nancy Hays
 Walter and Constance Linder
 Roberta Livingston
 Joel Loecken and Michelle Latourelle
 Troy and Larissa Long
 Quinn Lukas
 Troy and Teresa Marusich
 Daniel and Jill McCarty
 James McGregor and Kathleen Burt
 Barry and Julene Melquist
 Armando and Maria Mojica
 Shawn and Amy Murnan
 Daniel and Mary Murray

Andy Nederveld and Sharon Teska
 Alek Nikolic and Sally Weatherly
 William and Deanna Ola
 Myron Orfield and Jeanne Farrar
 Daniel and Susan Patton
 Kenneth Pauly and Anne Marie Dominguez
 Mark and Rhonda Pirk
 David Platt and Megan Kern
 Scott and Karin Poellinger
 Thomas and Laura Portz
 John Potter and Julie Churchill
 Joel and Cynthia Racchini
 Chris and Paula Rahill
 Vincent Riera and Ellen Evans
 Wayne and Cassandra Robinson
 Nicolle Rockhold
 Audra Rosenfeld
 Paul and Angie Saffert
 David and Joan Sauer
 Rebecca Schubring
 James Schwartz and Andrea Wallack
 Christopher Setchell and Adrienne Leahey
 Michael and Judith Sexton
 Mark and Deborah Sims
 Doug and Heidi Solomon
 Julie Stock
 Greg and Julieann Stoks
 Tamrat Tademe and Karen Shannon
 Martin Tahija and Mary Sturzl
 Kathleen Tickle
 Peter Torvik and Julie Holland
 Richard and Jennifer Trella
 Todd and Malou* Watterson
 Brad and Jenifer Williams
 Paul and Kristi Jo Williams

Contributor

Anonymous
 Anonymous
 Lori Anderson
 Mark Bahr
 Ted and Patricia Bather
 Thomas and Catherine Beringer
 Michael and Amanda Berthoud
 Tom Bird
 Gary and Kathryn Bischof
 Greg and Maria Bliss
 Dawn Breza
 Jennifer Bucklew
 Mary Clinton
 James Commers and Catherine Flaherty
 Tony and Kelly Etienne
 Charles and Laura Feld
 John Franklin and Jeanne Galle Franklin
 Richard and Lori Gherardi
 Carolyn Grove
 Peter Horejsi and Rachel Rivard-Horejsi
 Kelly Jordan
 Edward and Maggie Keady
 Christopher and Sheri Koch
 James and Anne Marie Larson
 Jamin Luebke and Gretchen Scherer
 Mark Massmann
 Diane C. Mullen
 Eric and Lisa Munkeby
 John O'Connor
 Frank and Carolyn Ondrey
 Christopher and Ann Ossanna
 Stephen Pohlen and Christine Glisczinski
 Michael and Catherine Quealy

Timothy and Colleen Sauter
 Elizabeth Scott
 John and Ellen Skahan
 Douglas and Stacia Thompson
 Gary and Mary Tucker
 Mark and Christine Vitelli
 Gregg and Karen Waldon
 Kimberley Young

Alumni

We are grateful for the contributions of our alumni from St. Margaret's Academy, Benilde High School, and Benilde-St. Margaret's School. They are listed in alphabetical order by class, giving level, and percent of participation.

St. Margaret's Academy Alumnae

1940 – 2% participation

Century Level
 Marian Chandonnet Pec

1942 – 2% participation

Contributor
 Patricia Hoy Orth

1943 – 2% participation

Century Level
 Dolores Fell Johnson

1944 – 2% participation

Contributor
 Lorraine Melsha Nelson

1946 – 8% participation

Century Level
 Patricia Giessel Coleman
 Lavonne Mertens Skelton
Contributor
 Eileen Dohney Freeman
 Patricia Trappmann Hnath
 Lorraine Cavanaugh Meehan
 Mary Harter Rode

1947 – 6% participation

Century Level
 Mary Alice Juettner Hargarten
Contributor
 Mary Cavanaugh Frawley
 Mary Joan Tracy Larsen
 Rosemary Conlin Lentsch
 Virginia Martin Morris

1948 – 1% participation

Contributor
 Jean Maas Ward

1949 – 11% participation

Red Knight Level
Yvonne Hentges Peterson
Century Level
Mary Marrin Killalea
Evelyn Fisch Lausen
M. Kathleen Dougherty Leisz
Geraldine Johnson Leonard
Mary Jean Manke Martin
Joan Owen Novak
Contributor
Maureen O'Neill Enger
Betty Steinbach Nordlund

1950 – 8% participation

Century Level
Rosemarie Fish Chyrklund
Maxine Johnson Zappa
Contributor
Veronica Mortl Fashant
June Ess Hiller
Patricia Potter-Keays
Marilyn Baron Zastrow

1951 – 12% participation

Builder's Level
Barbara Dibos Turnbull
Century Level
Donna Hansen Davidson
Betty Lyman Spartz
Contributor
Sharon O'Neill Barrett
Adrienne Ouellette Hartly
Audrey Esterley Jarosh
Alice Maas Langer
Mary Sullivan Riley
Louanne Howard Vitek
Louverne Noble Williams

1952 – 5% participation

Century Level
Kathleen Siede Nelson
Patricia Herbert O'Malley*
Patricia Coulombe Thompson
Contributor
Marilyn Schlosser, OP

1953 – 4% participation

Century Level
Patricia Schwartz Mortl
Contributor
Jo Anne Sullivan Halek
Kay Murray Murphy
Mary Schwappach

1954 – 5% participation

Century Level
Kathy McGraw Gretsche
Contributor
Mary Scheinost
Patricia Slaney-Campion
Rita Wallerius Stevens

* deceased

All gifts made during fiscal year 2015
(July 1, 2014 - June 30, 2015)

1955 – 6% participation

President's Level
Ann Liemandt Cronin
Builder's Level
Marcia Mengelkoch
Century Level
Katherine Werlich Charlson
Colleen Steinhauer Foley
Louise Peterson Jacobs
Contributor
Patricia Schupp Hart

1956 – 4% participation

Century Level
Nancy Mayer Riley
Contributor
Zoe Anne Lillie Brandberg
Barbara Butler Kondziolka
Mary Krawczyk Zuber

1957 – 25% participation

Builder's Level
Joann Frank Braun
Carol Butler Burch
Winnie Gorman Collins
Cecilia Smith Davis
Clare St. Martin Foley
Gloria Bester Ford
Kathleen Gorman Grendahl
Mary Ellen Halverson
Pat Vernon Hastings
Patricia Helin
Mary Bina Indelicato
Colette Hartman Johnson
Joanne Stepkala Johnson
Barbara Swanson Johnston
Mary Hansen Jordan
Margaret Fraser Judge
Judith Stanley Lucking
Patricia Nordstrom Mahoney
Ruth Duggan Meitz
Sheilah Barber Mulvaney
Kathleen Boulton Nelson*
Ruth Chan Oare
Mary Kastner Ortler
Judith Canfield Shapiro
Charon Ennen Shinnick
Patricia Dooley Solie
Janet Kalitowski Stenglein
Contributor
Mary McAndrews Martin

1958 – 7% participation

Benefactor Level
Mary Lidholm Stelzer
Builder's Level
Catherine Gillespie Dooley
Century Level
Mary Ann McDonald Perry
Joanne Wallerius Rabatin
Contributor
Sue Murray Dombross
Sharon Fitzgerald
Eileen Sullivan Hedberg
Colleen O'Malley, CSJ

1959 – 16% participation

Century Level
Anonymous
Judy Hoff Heckmann
Patricia Lordan Kernan
Roberta Madden Lady
Roberta Hartel Reeves
Contributor
Rita Lorbeski Bennett
Mary Beth Westbury Block
Bonnie Books Edmonds
Mary Klick Hand
Georgianna Miller Klevar
Susan Oeffling, CSJ
Andrea Anderson Sledz
Merjean Noonan Stensby
Judith Riebel Welch

1960 – 3% participation

Contributor
Mary Dale-Coutu
Patricia Toohey Flaherty
Mary McGuire Forpahl

1961 – 4% participation

Red Knight Level
Marilee Woehning Miller
Century Level
Kathleen Dolan Daly
Joanne Berger Lewis
Contributor
Kathleen Greeley Kozlak
Jeanne Warner Nelson

1962 – 9% participation

Benefactor Level
Kathleen Harrington
Red Knight Level
Barbara Hartwig Castaneda
Builder's Level
Muriel Bochnak
Ann Claesgens
Mary Lou Fleetham Pointner
Judy Brenny Sarff
Century Level
Virginia Moore Glenn
Patricia Regan Johnston
Kathleen Kreutzian Westby Kasprick
Contributor
Janet Johnson Anderson
Mary Catherine Longley
Nancy Petroske

1963 – 3% participation

Builder's Level
Teresa Genadek Foster
Century Level
Carol Quigley Kerr
Contributor
Lexie Chudyk Kastner
Janet Law Michels

1964 – 6% participation

Century Level
Nancy Judd Magnusson
Bonita Ferrian Parkman
Contributor
Kay Hersman Burnett
MaryAnn Simonitsch Christanson

Judith Kukielka Collodora
Marlene Manke Curtis
Kathleen Truin Dohmen
Marjorie Cherveney Elie
Mary Gagne
Carole Pouliot Hedlund
Louise Wagner Jones
Mary Pearson Kaster
Susan O'Neill Sands
Nancy Roubik Scholl
Rose Ferrara Simon

1965 – 5% participation

Red Knight Level
Mary Yule Jelinek
Mary Ann Kraus Ramroop
Builder's Level
Karen Peters Shull
Century Level
Gail Poot Bertossi
Patricia Hoverman Johnson
Patrice LaTourelle
Kathleen Williams Nordstrom
Mary Kay Warner Verkennes
Contributor
Margaret Coleman Gadiant
Susan Gorman Lesberg
Virginia Finn Mahoney
Susan Caspers Poetzel

1966 – 4% participation

Patron's Level
Jo Gruidl Moore
Red Knight Level
Stacy Sochacki
Century Level
Mary Finn Pula
Contributor
Mary Jahnke Anderson
Patricia Andrescik Jorgenson
Jeanne Boucher Jungbauer
Julian Adelmann L'Herault
Therese Raker Regner
Jean Hass Tuohy

1967 – 5% participation

Benefactor Level
Bonita Kozub Frels
Century Level
Patricia Calder
Patricia Russell Evans
Helen Mulvehill Rockwell
Contributor
Kathleen Collopy
Susan Fashant Daniewicz
Kathleen Clarkin Foley
Susan Haeg George
Kathryn Knapp Hanz
Renee Rauch

1968 – 5% participation

Veritas Level
Virginia Lupo
Patron's Level
Patricia Casanova
Teresa Graham
Century Level
Nancy Swanson Kaplan
Kathleen Reger

Contributor

Mary Andresen
Therese Houllhan Campbell
Margery Topping Lau
Rosemarie Romportl
Patricia Mulvehill Scott
Margaret Mandile Sulzbach

1969 – 3% participation

Red Knight Level
Margaret Arms Burt
Century Level
Janine Marceau
Contributor
Mary Bochnak
Mary Jo Nelson Brumbaugh
Nancy Reuter Kodadek
Katherine Murray

1970 – 3% participation

Benefactor Level
Patricia Pottner Latsch
Red Knight Level
Eileen Janas
Century Level
Marguerite Schultz Burke
Patricia Burke
Contributor
Alison Holden Larkin
Mary Kay Folstad Roe

1971 – 3% participation

Builder's Level
Colleen Keenan Wynne
Century Level
Monica Brinkman Blackman
Contributor
Cynthia Fashant Collins
LaDonna Raskob Kartak
Susan Shima
Mary O'Rourke Wickersham

1972 – 1% participation

Veritas Level
Diane Egan Slayton
Red Knight Level
Patricia Bailey Myhre

1973 – 5% participation

Red Knight Level
Theresa Spartz Karels
Ann Ruff
Century Level
Michaela Diercks
Beth Delmonico Gloppen
Kathleen Tickle
Contributor
Mary Christine Cella Nunez

1974 – 6% participation

Builder's Level
Catherine Richter Bonser
Century Level
Amy Born Duff
Mary Kaye Anderson Gorrilla
Contributor
Katherine Boller Hickman
Moir White Kennedy
Mary Jagodzinski Leizinger
Susan Pauly
Janet Williams

Benilde High School Alumni**1959 – 18% participation**

Red Knight Level
Robert O'Hara
Gregory Smith
David Wendt
Builder's Level
John Hill
Albert Woodward
Century Level
Kenneth Fasching
Patrick McCarthy
John Quinn
Frank Spinner
Contributor
William Kleifgen
James Lehan
Wilford Maller
Michael O'Halloran
Gerald Phillips
Thomas Rerah
John Sheats
Dennis Smith
Nick Strandberg

1960 – 7% participation

Red Knight Level
Thomas Foss
Builder's Level
John L. Meagher
George O'Leary
Century Level
Joseph Daly
Thomas Donohue
Michael Gondek
Robert Olsen
John Rein
Robert Shields
John White
Contributor
Garrett Benner

1961 – 4% participation

Century Level
Calvert Busch
James Lampe
Thomas St. Martin
Robert Walsh F.S.C.
Contributor
Thomas Aulwes
Roger Carlson*
Stephen Halluska
Winfield Wood

1962 – 7% participation

Benefactor Level
Robert Harrigan
Builder's Level
Thomas Malia
John McKeon
Century Level
Gerald Bauer
Mark Davy
Harvey Johnston
James Sharpsteen
Contributor
Richard Finke
Jerome Johnson
Joseph Michels
Kirk Nelson

Michael Peterson
Jeffrey Scholl

1963 – 6% participation

Veritas Level
Michael Scherer
Benefactor Level
Richard Ahlstrom
Red Knight Level
James McNearney
Thomas Schommer
Century Level
Thomas Harwood
Donald Johnson
James Misencik
Michael O'Keefe
Fr. Tom Sieg
Contributor
Stephen Hoyt
Charles Rice

1964 – 10% participation

Benefactor Level
Michael Sayer
Red Knight Level
Thomas Burt
Builder's Level
Lester Breuer
John Broback
Century Level
Douglas Barber
Michael Bertrand
James Flick
Paul Frank
Donald Kreber
Jon Samuelson
Patrick Shaughnessy
Michael Sitek
Robert Verkennes
Alexander Wilson
Contributor
Michael Bailey
Dennis Beltrand
James Carufel
Timothy Collins
William Gorrill
Benjamin Gudden
Bert Notermann
Desmond Michael Pratt

1965 – 9% participation

Benefactor Level
Robert Glorvick
Red Knight Level
Douglas Burnikel
Richard Johnson
Edward Twomey
Builder's Level
Timothy Dooley
James Lucas
Richard Peterson
Century Level
Thomas Commers
Leo Daly
Robert Dolan
George Frost
Richard Hack
Randall Hanson
Robert Kressel

James McCaffrey

Contributor
Ralph Bistodeau
George Burke
Mike Frank
Ralph Hegman
James Kaster
Thomas Kelly
Mike Mahoney
Terrence O'Neill
Charles Percival
James Springrose
Richard Wald
William Yaeger

1966 – 5% participation

Founder's Level
Robert M. Short
Patron's Level
Arthur Moore
Red Knight Level
James Burt
Lawrence Grubryn*
Century Level
John Dupont
John Elsen
Fr. Paul Hoffman
Donald McDonald
Thomas Phillips
James Robinette
Contributor
Bill Martin
Ernest Palmsten

1967 – 5% participation

Red Knight Level
William Marceau
Paul Vetscher
Builder's Level
Robert Finke
Century Level
Bernard Bauman
Ted Hendrickson
Michael O'Donnell
Gregory Paquette
Roger Renner
James Rockwell
Contributor
Jon Cieslak
Michael Kartak

1968 – 7% participation

Benefactor Level
David Dent
David Moser
Builder's Level
Robert Fox
Thomas Horner
John M. Lamb
Thomas Miller
John Nichols
Century Level
David Blake
Thomas Clancy
Hugh Hanson
David Hoffmann
John W. Lamb
Timothy Plant

Contributor
 Ronald Heinz
 William Leach
 Charles Liddy
 James Mader
 Stephen Noack
 Richard Wright

1969 – 5% participation

Founder's Level
 Loren Laskow
 Robert Moore
Patron's Level
 Thomas Gilligan
Red Knight Level
 Thomas Dolphin
Builder's Level
 John Lawlor
 Paul Stahler
Century Level
 Michael Mitchell
 John O'Leary
Contributor
 James Kodadek
 Kirk Lau

1970 – 6% participation

Benefactor Level
 Joseph Margarit
 Robert Schafer
Red Knight Level
 John Reger
Builder's Level
 Steven Mattaini
Century Level
 Michael Dukinfield
 John Henrich
 Michael Larkin
 Scott Offerman
Contributor
 William Deppa
 Richard Horner
 Charles Johns
 Steven Mundy
 Philip Ochs

1971 – 5% participation

Patron's Level
 Jerome Gilligan
Red Knight Level
 William Herber
 Bob Tift
Builder's Level
 Mark Buchanan
Century Level
 Thomas Ferrara
 James Fox
 Terrance Johnson
 Joseph Mulvehill
 James Sherburne
 Duane Smith

1972 – 4% participation

Veritas Level
 Mark Graham
Patron's Level
 Michael Gilligan
Benefactor Level
 R. Emmet Holden

Century Level
 Christopher Pattock
Contributor
 Joseph Bethke
 Patrick Salzer

1973 – 6% participation

Red Knight Level
 Thomas Mikulay
Century Level
 Keith Colver
 Thomas Hubbard
 Joseph Kolars
 William Lundberg
 Michael Premo
 John Reiser
Contributor
 Timothy Brennan
 James Clifford
 Jeffrey Sweetser

1974 – 16% participation

Founder's Level
 John Moore
Red Knight Level
 Mark Beltrand
 William Harding
 Michael Karels
 Fran Knapp
 Mark Lenss
Builder's Level
 David Paquette
Century Level
 George Hoedeman
 Michael Keefe
 Joseph Larkin
 Thomas Law
 Paul Williams
Contributor
 John Coleman
 Hale Kunerth
 Joseph Neuberger
 John Richey
 Timothy Sauter

Benilde-St. Margaret's School Alumni

1975 – 12% participation

Patron's Level
 Glenn McCabe
Benefactor Level
 John Dwyer
Red Knight Level
 Bill Cottrell
 John Klein
Builder's Level
 Anonymous
 Norton Hattie
 Paul Keefe
 Therese Ross-Larsen
Century Level
 Terrance Carr
 Gregory Kemp
 Patrick Walter
Contributor
 John Cich
 Brian Fitzgerald
 Anne Price Lutz
 Timothy Lutz

Paula Jarosh Romportl
 Robert Ruff
 Sue Steider Ruff
 Mark Ryan
 Paul Schumacher
 Russell Schumer
 Eric Turnquist

1976 – 4% participation

Founder's Level
 Anonymous
Patron's Level
 Michael Moore
Red Knight Level
 Mary Kay Volp Johnson
Century Level
 Camilla Stone Cane
 Joseph Howard
 Mary Joranger Neraasen
 John Prosen
Contributor
 Lawrence Busch
 Lawrence Rocheford
 Ronald Weber

1977 – 9% participation

Veritas Level
 Todd Johnson
Patron's Level
 John Gilligan
Benefactor Level
 Diane Loftus
Red Knight Level
 Michael Daly
Builder's Level
 Joseph Heider
 William Hickey
 Anne Lynch Pittman
Century Level
 Jeffrey Bretson
 Laura DesMarais Bretson
 Susan Fugner Knauff
 Bridget Tompkins
Contributor
 Thomas Beltrand
 Robert Madson
 Connie Kane McClurg
 Christopher McGrath
 Erin O'Brien
 Lawrence Pohlen
 Julie Samuelson

1978 – 14% participation

Patron's Level
 Margaret Gilligan
Benefactor Level
 Rachael Scherer
Builder's Level
 Margaret Foley Day
 Marilyn Peller Nelson
Century Level
 Milissa Blevins Mahoney
 Leslie Laskow Bradley
 Carole Williams Briggs
 Daniel Carr
 Margaret Kemp Kratz
 Kathleen Schumer Mueller
 Sandra Boes O'Brien
 Steven Wise

Contributor
 Mary Kuehneman Canto
 Patrice Miller Carlson
 Cheryl Drahos Dixon
 Douglas Feger
 Timothy Finley
 John Hedrick
 Kevin Kirchner
 Kevin Maas
 Michele O'Brien-Lindquist
 Ann Mueller Ossanna
 Rick Sheridan
 Greg Sicora
 Philip Sweetser
 Kathryn Hanson Thuleen
 Joseph Trombley
 Leonard Weingartz

1979 – 14% participation

Veritas Level
 Corrina Colwell Conley
Benefactor Level
 Anthony Mailhot
Red Knight Level
 Steven Fischer
 Bridget O'Keefe Gidley
Builder's Level
 Teresa Battaglia
 John Graham
 Maureen Hastings Shaver
Century Level
 Martha McHugh Baumbach
 Leon Duda
 Margaret Fitzgerald Duda
 Bradley Madson
 Timothy Murray
 Lisa Bennetts Willcockson
Contributor
 Patricia Bach-Hathaway
 James Boulay
 Robert Cron
 Judith Deckenbach
 Stacy Stevens Fraser
 Gregory Gunderson
 Charles Haben
 Christine Sweetser Jansen
 Christopher Koch
 Mark Lucke
 John Myers
 Jim Rasinski
 Michael Smith
 Anita Medina Tomascak
 Kathryn Peller Woodley

1980 – 5% participation

Veritas Level
 Rosemary Bowler Guidinger
 James Kopp
 Mary Kay Morin Kopp
Red Knight Level
 Timothy Jewett
 Bonita Schumer Reynoldson
Builder's Level
 Jeanne Hromatka Nightingale
Century Level
 Monica Ford Eppinger
Contributor
 Steven Jansen
 Julie Ortler Palach

1981 – 6% participation

Patron's Level
Joseph Lee-Gilligan
Red Knight Level
Paul Rocheford
Builder's Level
Paula Herbert Gamer
Anne Ford Moore
Eric Olson
Century Level
Philip Williams
Contributor
David Brasket
Hugh Dillon
Kate Howard
John Lucke
Robert Neuberger

1982 – 8% participation

Founder's Level
James Cron
Veritas Level
Stephen Frenz
Maureen Haggerty Mischinski
Peter Scherer
Patron's Level
Sheila Cronin Bornfleth
Martha Gilligan-Gaines
John Gordon
Red Knight Level
Patricia Hynes Bruer
Michael Lamb
Builder's Level
Timothy Bianchi
Kevin Kelly
Century Level
Paula Kozlak Evan
Elizabeth Knapp Rosenberg
Timothy Merrigan
John Weber
Contributor
Jeffrey Anderson
Kathryn Stelzer Anderson
Julia Kopp Bertrand
Anne Marie Kocourek Larson
Mike Rooney
Elizabeth Fitzgerald Scott

1983 – 7% participation

Veritas Level
Kristopher Scherer
Kevin Weber
Michelle Fournier Weber
Red Knight Level
David Martin
Builder's Level
Janet Rosovitz Swedal
Century Level
Christopher Bowler
Janie Busch
Steven Lehr
Kathleen Egan Salman
Debbie Schumer
Deborah Salomon Sims
Mark Sims
Caroline Cochrane Stroh
Contributor
Daniel Murphy
Molly Warren Sachse
Colleen Riley Sauter
Matthew Schumacher
Cheryl Stephani

1984 – 9% participation

Veritas Level
Michelle Cole Engstrand
Benefactor Level
Laurie Fontaine Junker
Builder's Level
Michael Rogers
Century Level
Michael Foley
Ann Marhoefer Maher
Mary-Farrell Hamill Tarbox
Robert Werner
Stephanie Wolf
Contributor
Anonymous
Susan Douglas
Catherine Atkinson Frazier
Peter Gordon
Edward Keady
Catherine Hagerty Kirchner
Brigid Lynch Knudsen
Jennifer Kopp Ott
Joseph Riley
Catherine Brasket Taylor
Patrick Vallez-Kelly
Michael Vecellio

1985 – 12% participation

Benefactor Level
Anonymous
Michael Nemanich
Mary Aubart Schaefer
Nancy Wiser
Red Knight Level
Anastasia Gallagher Lynch
Thomas Lynch
Builder's Level
Patrick Kocourek
Lisa Hendrickson Shaughnessy
Century Level
Kevin Conway
Maureen Flynn Haakonson
Bryan Olson
David Platt
Contributor
Stephen Bennett
Mary Lucke Bulner
Jane Coughlin
Virginia Daniel
Joseph Doll
Maureen Gormley
Joseph Kopp
Kenneth Kramer
Mark McLellan
Stefanie Rea Miller
Curtis Mortenson
Eric Munkeby
Joseph Pouliot
Joseph Rogers
Sara Rosenstreich Rogers
Paul Swanson

1986 – 12% participation

Veritas Level
Mark Scherer
Patron's Level
Chris Beutz
Benefactor Level
Gregory Daniel
Margaret Postregna Mostrom
Jeffrey Olejnik

Red Knight Level

Sandra Janssen Barry
Maureen Weber Grazzini
Builder's Level
Kristin Brierton Dennewill
Luke Toft
Century Level
Eric Almquist
Bill Igel
Megan Kern
Armando Mojica
Peter Platt
Dina Wilderson
Jeanne Halder Yeager
Contributor
William Fitzgerald
Christine Glisczinski
Gregory Hanson
Matthew Keeler
Lisa Lenhart-Murphy
Catherine McGraw McGlinch
Andrew Neuberger
Stephen Pohlen
John Vonhof
Christopher Warren
Thomas Whitlock
John Ziminske

1987 – 6% participation

Veritas Level
Anonymous
Builder's Level
Karen Hill Galvin
Katherine Carlsen Juckniess
Molly McMahon
Peter Rogers
Jeffrey Thies
Century Level
Sheila Cronin Anderson
Kelli Kastner Nemer
Brigitt Orfield
Contributor
Michael Engel
Sean Johnson
Patricia Hedrick Magor
Eric Olson

1988 – 6% participation

Patron's Level
Adam Sellke
Mary Tremmel Sellke
Benefactor Level
Donald Pizzolato
Red Knight Level
Anonymous
Builder's Level
Anne Marie Rahm Schwartz
Century Level
Susan Smith Quinn
Beth McGie Robertson
Joan Kopp Sauer
Contributor
Kevin Bennett
Patrick Gallagher
Pamela Sable Patnode
Kristina Noziska Westin
Steven Whitney

1989 – 8% participation

Patron's Level
Anne Welsh Kimmel
Robert Kimmel
Builder's Level
Tricia Huntley
Kristin Neis Jamison
Century Level
Mary Patricia Schlaerth Abraham
Jennifer Young Cutter
Andrew Olson
Gregory Roos
Mary Tompkins
Contributor
Brenda Buckley-Jones
Alisa Rashid Butler
Sheila Lynch Butler
Matthew Havel
Jennifer Muyres Palmer
Courtney Burns Seesz
Stephen Smith
Bridget Erlanson Tangney
Kerry Brierton Welterling

1990 – 11% participation

Benefactor Level
Philip McLaughlin
Red Knight Level
Bradford Fayfield
Kara Sykora McDowell
Ingo Schulz
Builder's Level
Thomas Cella
Jennifer Staley Cherveney
Century Level
Anonymous
Douglas Bertossi
Maureen McManus Decker
Cesar Dewey
Jeffrey Hillins
Eric Kohn
Heather Gallagher Lynch
Peter Lynch
Melissa Lenmark Reller
Eric Tennesen
Contributor
Anonymous
Mark Loftus
Sarah Bangert Randolph
Derek Schnack
John Stroh

1991 – 6% participation

Patron's Level
Christine Peters Brick
Benefactor Level
Stephanie Schlitt Comito
Builder's Level
Tatyana Hoffman Blankenship
Connie Donato Fredin
Contributor
Amanda Braun Campbell
Gregory Doll
Matthew Dooley
Erik Fossum
Douglas McLeod
David Roberts

1992 – 7% participation*Red Knight Level*

James Ferrens
Jeffrey Staley
Builder's Level
Wade Briner
Century Level
Molly Joseph
Kelley McManus Metz
Molly Rogers
Contributor
Kevin Jewett
Jonathan Knoll
Meaghan McClellan
Tracy Ronhovde Standal
Anne Rabatin van Deventer
Joshua Zuehlke

1993 – 10% participation*Benefactor Level*

Matthew Scherer
Andrea Scherer Belton
Red Knight Level
Alfred Rashid
Builder's Level
Andrew Nicoli
Rachel Kuzma Olson
Century Level
Patricia Suddendorf Babler
Sarah Johnson Campbell
Laura Grendahl
Melissa Neis Mignano
Joseph Nemanich
Contributor
Jason Doll
Kirk Fossum
Kelly Gallagher
Holly Henn Kangas
Emily Larson
Kara Hanrahan Spike
Barb Teske-Young

1994 – 12% participation*Benefactor Level*

Maria Scherer
Builder's Level
Sean Johnson
Elizabeth Rogers
Century Level
Melissa Bickel Berggren
Ryan Dillon
Alice Vollmer Faggi
Brendan Hanley
Erin Faulhaber Kyle
Matthew Kyle
Contributor
Sara Wartman Dooley
Elizabeth Dooley Hankey
Thomas Hanson
Ann Shallbetter
Nhia Vang

1995 – 6% participation*Benefactor Level*

Christopher Culp
Christopher Staley
Builder's Level
Corinn Tennesen Cella
Kathleen Keane
Century Level
Ann Cavanagh Kramer
Ryan Meier

Contributor

Erin Kohn Bieniek
Aaron Wheeler
Megan Lucius Wohlwend

1996 – 9% participation*Benefactor Level*

James Dunbar
Red Knight Level
Daniel Cooley
Builder's Level
K. Paul Bednarowski
Brian Luehne
Biz McShane Murphy
Jeffrey Rauenhorst
Century Level
Katherine Leahy Emmel
Katherine Kuffel Hamill
Meredith Schipani Smith
Daniel Vukelich
Contributor
Andrea Vignali
Colin Wright

1997 – 4% participation*Century Level*

Matthew Foley
Contributor
Laura Hanson Conlon
Mary Ebnet Fitzpatrick
Thomas Fitzpatrick
Jamie Flaherty Held
Erin Deeney Offerdahl

1998 – 5% participation*Benefactor Level*

Sarah Wilm Hunter
Red Knight Level
Kristin Melsen
Builder's Level
Matthew Dunbar
Timothy Oakland
Century Level
Theresa Clifford Acevedo
Erinn Perushek Farrell
Contributor
Christopher Ugarte

1999 – 13% participation*Benefactor Level*

Meghan Lind DesLauriers
Gregory Dukinfield
Katie DesLauriers Sullivan
Red Knight Level
Jill Flaherty Link
Century Level
Christina Cipolle
Michael Huntley
Contributor
Andrew Alberts
Mary Brozic Boldischar
Patrick Boldischar
Elliot Botten
Catie Scherer Brackin
James Brackin
Mike Davin
Molly McShane Davin
Stephanie Djerf
Anna Seitz Gerken
Sarah Carufel Hauer
Sarah Hruby
Megan Humphries

Paul Judd
Vijaya Kant
Luke Kaster
Andrea Scanlon Leet
Kevin McCaffrey
Abby Katzner Stans
Katie Oberstar Ugarte

2000 – 4% participation*Red Knight Level*

Matthew Tobelmann
Builder's Level
Micki Cloutier
Century Level
Elizabeth Burke
Heather Hilchey
Contributor
Gabriel Skelly
David Windhorst

2001 – 5% participation*Founder's Level*

Kristine Rauenhorst Widmer
Builder's Level
Charlie Daum
Steven Dunbar
Rachel Kemp Waldner
Century Level
Anonymous
Mary Joos
E.J. Baldwin Merrill
Contributor
Matthew Dunn
Tom Wartman

2002 – 3% participation*Builder's Level*

Ellie Dahmen Clifford
James Clifford
Contributor
Andrew George
Jill Periolat Kaster
Sarah Rauth Polovitz

2003 – 3% participation*Founder's Level*

Ian Schaser
Red Knight Level
Anonymous
Century Level
Andrew Kelzer
Amy McGrath Robinson
Contributor
Andrew Gabriel
Melissa Lucas

2004 – 19% participation*Contributor*

Matthew Cannon
Jacob Carlson
Eve Commerford
John Cooney
Marissa Ettel
Bryce Evans
Stephanie Seitz Evans
Caitlin Gordon
Ann Greco
Nicholas Halbert
Jennifer Hanrahan
Kellie Sutherland Hansen
Marie Havrilla
Margaret Kanowitz

Joseph Kearney
Catherine Kedzuf
Christopher LaBounty
Shannon Martin
Michelle Melsen
Andrew Motch
Michael Peterson
Blair Mlnarik Pircon
Colleen Powers
Calley Kingston Roers
Joseph Ryan
Laura Kloehn Saltzstein
Holiday Eller Samabaly
Elizabeth Schroll
Maggie Erwin Scofield
Christopher Stephens
Melissa Surdyk
Molly Surdyk
Taylor Surdyk
Katherine Tymchuck
London Vale
Kacy Walz

2005 – 4% participation*Benefactor Level*

Michael DesLauriers
Century Level
Peter Gilligan
Rebecca Quinby-Hyland
Contributor
Chad Beltrand
Ann Houlihan Doda
Phil Koski
Bennett Lang
Joseph Schirmers
Claire Shea
Molly Mlnarik Wolford

2006 – 4% participation*Red Knight Level*

Reed Mainquist
Century Level
Christopher Duncan
Contributor
Daniel Knauff
Erin Koski
Daniel Morin
Matthew Nelson
Allison Schumacher

2007 – 3% participation*Century Level*

Ryan Meyers
Ellen Hawkinson O'Brien
Laura Scherer
Contributor
Stephen DeJute
Robert Mlnarik
Peter Ritchie
LaToya Williams

2008 – 4% participation*Red Knight Level*

Sara Frey
Century Level
Colin Cervantes
Contributor
Molly Dillon
John Dwyer
Thomas Knauff
Paul Koski
Jonathan Lynch
Samuel Tift

2009 – 1% participation

Contributor
 Ryan Houlihan
 Sydney Speltz

2010 – 3% participation

Century Level
 Natalie Duthoy
Contributor
 Robert Duffy
 Chase Mlnarik
 Daniel Nelson
 Ryan Quinlivan
 Catherine Schirmers

2011 – 5% participation

Century Level
 Patrick Daly
 Samuel Scherer
Contributor
 Vincent Beacom
 Danielle Kincs
 Patrick Krieger
 Samuel Paquette
 Carter Rodman
 Zachary Silvestri
 Tanner Speltz
 Jack Tift

2012 – 3% participation

Century Level
 Ryan Philbin
Contributor
 Kelly Dwyer
 Lauren Effertz
 Patrick Freese
 Sarah Silvestri
 Julia Weber

2013 – 5% participation

Century Level
 Rachel Frenz
 Daniel Labosky
Contributor
 Catherine Cole
 Michelle Doyle
 Connor Gallaher
 Kellen Gill
 Luke Musech
 Jacqueline Scherer
 Eleanor Scott
 Precious Walker
 Mario Zattoni

2014 – 5% participation

Century Level
 Andrew Birkeland
Contributor
 Matthew Adamson
 Claudia Freese
 Riley Gannon
 Nick Guggemos
 Robert Hathaway
 Michael Kaminski
 Samuel Lynch
 Michael McClurg
 Jonathan Paquette
 Keaton Studsrud
 McKenzie Swenson

Faculty and Staff

The quality of a Benilde-St. Margaret's education is reflected in the caring and commitment of its faculty and staff. All members of the BSM faculty and staff give generously of their time and talent. We salute those faculty and staff who have made financial contributions as well.

Anonymous
 Anonymous
 Anonymous
 Mary Andersen
 Amanda Anderson
 Thomas Backen
 Sandra Janssen Barry 1986
 Dan Bowler
 Maura Brew
 Patrice Miller Carlson 1978
 Theresa Collins
 Kathleen Dillon
 Anne Marie Dominguez
 Scott Effertz
 Jeffrey Fix
 Ted Freese
 Nicholas Gamache
 Rosalie Goldberg
 William Gorrill 1964
 Kevin Gylai
 Katherine Kuffel Hamill 1996
 John Hamre
 Angela Hickman
 Stephen Imholte
 Kathryn Jacobson
 Paul Keefe 1975
 Margaret Kenneally
 Megan Kern 1986
 Tammy King
 Leah Klister
 Judith Koski
 Patrick Krieger
 Bennett Lang 2005
 Amy Larson
 Lisa Lenhart-Murphy 1986
 Mark Lex
 Joel Loecken
 Shane Lomax-Sisco
 Debra Martinson
 Katherine McDonald
 Carol McLain
 Carol McNamara
 Rebecca Meagher
 Ryan Mills
 Anne Moen
 John Moore 1974
 Mary Murray
 Mary Joranger Neraasen 1976
 Jeanne Hromatka Nightingale 1980
 Mary Fran O'Keefe
 William Ola

Rachel Kuzma Olson 1993
 Kenneth Pauly
 Gerald Pettinger
 David Platt 1985
 Stephen Pohlen 1986
 Natalie Ramier
 Nicole Rasmussen
 Mary Rausch
 Francis Roby
 Margaret Ryan
 John Sabol
 Joan Kopp Sauer 1988
 Claire Shea 2005
 Susan Skinner
 Nancy Stockhaus
 Tracy Teyssier
 Nicholas Tibesar
 Frederique Toft
 Marilyn Turbett

Friends

Many people share generously with the school as a measure of their regard for Benilde-St. Margaret's and the service we provide to the community. We appreciate the financial support of the parents of our alumni, grandparents of current students and alumni, our former faculty and staff, board members, current students, and other friends and neighbors who are listed below by giving level.

President's Level

Anonymous
 Carlton and Ann Cronin
 John and Lois Rogers
 Kevin and Greta Warren

Founder's Level

Anonymous
 Anonymous
 Archie Black and Jane McDonald Black
 Roy and JoAnn Ferber
 Patricia Fournier
 Matthew and Jacqueline Haughey
 Thomas and Joyce Hansen
 Robert and Mary Healy
 Charles and Mary Jungmann
 Peter and Monica Lawyer
 Thomas and Sheila Letscher
 Alvin and Mary Agnes McQuinn
 Penny Meier
 John and Lourdes Moore
 Robert and Patricia Moore
 Michael and Laurel Murry
 Lorraine Pohlen
 Warren and Mary Lynn Staley
 James and Kathryn Vogl

Veritas Level

Anonymous
 Anonymous
 John Ankeny and Virginia Lupo
 Robert and Elizabeth Birney
 Edward and Judy Cannon
 Paul and Corrina Conley
 Clara Dolan
 Albert Fan and Susan Wollan Fan
 Mark Graham and Laneta Dorflinger
 Mark and Rosemary Guidinger
 Harvey and Sharyl Hansen
 Eugene and Barbara Hickok
 James and Mary Kay Kopp
 Douglas and Mary Beth Lennick
 Mark and Heather Scherer
 Michael and Susanne Scherer
 Marion Short
 Robert and Diane Slayton
 Shay and Brenda Wyley
 James and Kathy Wyman

Patron's Level

Anonymous
 Noah Bly
 Thomas and Laurie Burns
 Jerome and Patricia Gilligan
 James Kamish and Gloria Woog-Kamish
 David and Kristine Overman
 Michael and Mary Lynne Perushek
 Randall and Gail Ross
 Roger and Irma Scherer
 Henry and Christina Shea

Benefactor Level

Anonymous
 Anonymous
 Anonymous
 Marc and Mary Andersen
 Dr. and Mrs. Louis Argenta
 Gerald and Marilyn Burke
 Darrell Catton
 Warren and Theresa Christianson
 John and Kathleen Cleveland
 Christian and Stephanie Comito
 Scott and Lisa Crump
 Michael and Carol Cushmore
 George and Carol Daum
 Michael and Roberta Deeney
 Michael and Meghan DesLauriers
 Kenneth and Mary Duncan
 John and Caron Dwyer
 Kenton and Sharon Ebeltoft
 Jim Farrell
 Robert and Mary Fayfield
 Dr. and Mrs. Timothy Flaherty
 William Frels and Bonita Kozub Frels
 Skip and Barbara Gage
 Alan Geiwitz and Mary McMahon
 David and Kathleen George
 Christopher and Norah Gondeck
 Ray Caturia and Stephanie Goodman
 Robert and Mina Harrigan
 Stephen Imholte and Rachael Scherer
 Rodney and Laura Jordan
 Robert and Nancy Kloehn
 Elmer and Beverly Kopp
 Barry and Renee Levins

Joseph D. Margarit and Patricia Kalil Margarit
 Pat and Sue Martyn
 Philip and Gail McLaughlin
 James and Kathleen McLeod
 Mitchell and Jan McMillen
 Mary McPherson
 Greg and Barb Melsen
 Douglas and Sandra Milroy
 Joan Mitchell, CSJ
 Donald and Nina Mosher
 Bill and Jennifer Mullin
 Cary and Regina Musech
 Robert and Ellis Naegele
 Robert and Joanne Neis
 Jeffrey and Laura Olejnik
 Michael and Susan Pagh
 Francis and Randon Pintens
 Donald Pizzolato and Kelly Koepke
 James Pohle and Susan Eich
 Mark and Karen Rauenhorst
 Alfred and Billie Reger
 Ken and Ann Robar
 Michael Rogers
 James and Barb Sarazin
 Michael and Ellen Sayer
 Robert and Beth Schafer
 Steve and Mary Schaefer
 Matthew and Kathryn Scherer
 Steve and Tamela Schroll
 Dennis and Elizabeth Sellke
 Joseph and Deann Speltz
 Ernie and Mary Stelzer
 Thomas and Kathryn Sullivan
 Norm Swett and Natalie Ramier
 Alan and Barbara Tennessen
 William and Judith Weiler
 Donna Welsh
 Jeffrey and Carol Wendt

Red Knight Level

Anonymous
 Gary and Patrice Alkire
 Mark and Barbara Beltrand
 Donald Bolgrean and Julie Klosterman
 Clayton and Irma Byam
 Barbara Castaneda
 Douglas and Pamela Christensen
 Daniel and Sharis Cooley
 William and Pam Cottrell
 Kim and Carol Culp
 Michael and Maureen Daly
 Peter and Mary Davis
 Ernest and Mary Dorn
 William Dougherty
 John and Beverly Dunbar
 Mark and Deborah Eckerline
 Edward and Antoinette Egan
 Coke Fitzgerald
 James and Judith Flaherty
 Michael and Karen Frey
 Randall and Leslie Geerdes
 David Glenn
 Steve and Annice Gregerson
 Phil Hawkins
 John and Mary Jelinek
 John and Kristin Joseph
 Michael Kehoss and Patricia Marek-Kehoss
 Edward and Julianne Kocourek
 Roman and Nancy Kozak

Mark and Sheila Lenss
 William and Rocky Marceau
 John Mark and Bridget Gidley
 George and Rita Marx
 Edward and Susan McConville
 Thomas and Marnie Mikulay
 John and Marilee Miller
 Keith and Patricia Myhre
 Bob Naegele, III
 Philip Niehoff
 Bob O'Hara
 Christopher and Nancy Patton
 Jeffrey and Laura Peck
 Richard and Nancy Perrine
 Larry and Judy Pfaff
 Alisa Revou
 Todd and Bonita Reynoldson
 Norma Scherer
 Fredrick Schilling and Debra Hamilton
 Patricia Williams Schirmers
 James and Lorraine Schneider
 John and Eleanor Steichen
 David and Rosemary Tobelmann
 John and Jill Trautz
 Karen Werner
 Frederick and Joanell Zimmerman

Builder's Level

Randy Ahlm
 Frank and Mary Jo Aiken
 Mark and Mary Anderson
 Mary Anderson
 Ron Bader
 Rick and Grace Battistoni
 Michael and Rita Boase
 Joann Braun
 Lester and Susan Breuer
 Andrew and Dorothy Brown
 Robert and Susan Burns
 Ken and Marlys Buss
 Richard Cheeseman and Kristen Nelson
 Mark and Christiana Christiansen
 Peter and Mary Jo Conzemius
 Joyce Danielson
 Robert and Margaret Delmore
 Charlie Dillon
 David and Catherine Dooley
 Maria Eggemeyer
 Paul and Laura Ekholm
 Ann Fleming
 Richard Foley
 Raymond and Gloria Ford
 Timothy and Teresa Foster
 Jeffrey and Justine Fritz
 Wood Kidner and Susan Funk
 Geoffrey and Lorrie Ghose
 Mark and Joann Gormley
 John and Laura Graham
 Kathleen Grendahl
 Hazel Hastings
 Donald and Julianne Herman
 William and Susan Hickey
 Mike Hipp
 Joseph and Shelly Hoesley
 Frank and Laura Hogan
 Noel and Kathryn Jacobson
 Kevin Becker and Susan Jalics Becker
 Cliff and Shirley Johnson
 Daniel and Katherine Juckniess

Peter and Mary Kay Keers
 Thomas and Renee Keller
 Robert and Margaret Keppel
 Robert and Lyn Kern
 Richard and Barbara Kramer
 Ronald and Diane Kretsch
 Colleen Kyllonen
 John and Nancy Lawlor
 John and Helen Lindseth
 Ardwin and Annette Link
 James and Dolores Lucas
 Edward and Joanne Maeder
 Richard and Carol Mahony
 Francesca Martonffy
 Joseph and Lynn McCarthy
 David and Susan McCarville
 Steven Mattaini and Rita McConnell
 John and Joan McMahon
 Robert and Linda Mlnarik
 David and Anne Moen
 Dennis Monroe and Patricia Weller
 Charlie Mullin
 Thomas and Sheila Mulvaney
 Francis Murphy and Biz McShane Murphy
 Marilyn Peller Nelson
 George and Ann Nemanich
 Nigel and Jeanne Nightingale
 Ryan O'Neill and Kathleen Keane
 Scott and Peggy Oppenheimer
 Gordon and Mary Ortler
 John and Mary O'Toole
 David and Debbie Paquette
 Randall Paulson and Teresa Battaglia
 Anthony and Leanne Peters
 Douglas and Mary Platt
 Ingo and Mary Lou Pointner
 J. Christopher Ritchie and Susan O'Malley
 Francis and Maura Roby
 Francis and Nancy Rondoni
 John and Marilyn Ross
 Craig and Maureen Shaver
 Robert and Karen Shull
 Bill and Joan Slattery
 Dawson Spindler
 Michael and Nancy Stockhaus
 Robert and Macrina Sudbeck
 Rick and Sherry Swindlehurst
 Dave and Marlys Thies
 Catie Tobin Naas
 Patrick and Barbara Turnbull
 Paul and Bette Vandersteen
 James and Jennifer Weichert
 Marc Weisenburger
 Jeffrey Wertz and Teresa Litfin-Wertz
 Terrance and Susan Wilm

Century Level

Anonymous
 Anonymous
 Anonymous
 Wilson and Theresa Acevedo
 Stuart and Romy Ackerberg
 Thomas and Eileen Ackerman
 Jeffrey and Kathleen Adamson
 Duane and Susan Ager
 Ronald and Kathleen Aho
 Dale and Mary Alberts
 John and Janice Almquist
 Edward Herzog and Deborah Anderson

Scott and Jennifer Anderson
 Vernon and Delores Anderson
 Dave and Barb Armstrong
 Paul and Gloria Arntzen
 Robb Bader
 Scott and Kerry Bader
 Sid Bader
 Dennis Balyeat
 Elaine Barber
 Julio and Gracia Battistoni
 Marianna Bauer
 Michael and Margaret Bauer
 Vincent and Lucia Beacom
 Randall and Marcia Betcher
 Dan and Nancy Berend
 Daniel and Diane Berg
 John and Gail Bertossi
 Mark and Jennifer Biglow
 Peter Nels Birkeland
 John and Lisa Boerboon
 Cassie Bordeau
 Lynn Bottge
 Richard and Lorraine Brasket
 Jim and Judy Brass
 Robert and Judith Brooks
 Frederick and Judith Brown
 Lee and Marguerite Burke
 Jerome Burns
 Kristen Long Cacciatore
 Jerry and Mickey Calengor
 Benjamin and Sarah Campbell
 Mark and Camilla Cane
 Br. Francis Carr, F.S.C.
 J. Patrick and Charlotte Cashin
 Joseph Cella
 Todd and Nancy Christopherson
 Nick and Deborah Cloutier
 Betty Cole
 Phillip and Mary Jo Cole
 Joe and Theresa Collins
 Keith and Julie Collver
 James and Mary Connelly
 Darlene Crosson
 Norma Cuderman
 Fr. Rinaldo Custodio
 Patrick and Michelle Daly
 Mina Daly
 Susan Dammen
 Thomas and Barbara Davis
 Mark and Joan Davy
 Paul and Susan DeJute
 David and Wanda DeRemer
 Richard and Jean Diaz
 David and Patty Ditzrich
 John and Julie Ditzler
 Robert and Jeanne Dolan
 Michael and Sharon Dukinfield
 Edward Dunbar
 Marcella Effertz
 Joel and Mary Ann Elftmann
 L. Jane Elzea
 Tom and Katherine Emmel
 Naomi Evans
 Dan Fliceck
 Daniel and Carol Forby
 Timothy and Judy Forcier
 Stephanie Ford
 Pat Forrest
 Duane and Theresa Fowler

Ted and Mary Freese
 George and Bennie Frost
 Jose Fulco and Amy Fenton Fulco
 Patricia Gabler
 Thomas and Cheryl Glisczinski
 Stanley and Rose Gonsior
 Tom and Mary Kaye Gorrilla
 Karen Gronvold
 Matthew Gruber
 Bob and Char Gunvalson
 Thomas and Sue Haeg
 Timothy and Katherine Hamill
 Maxine Hamilton
 Marjorie Mathison Hance
 Hugh and Mary Hanson
 Don and Marlene Hartzell
 Mary Harvey
 Michael and Beth Hawkins
 Roy and Candace Hein
 John and Roberta Henrich
 John and Diane Herman
 Herschel and Lisa Herndon
 George Hicks
 Nanci Hilden
 Allen and Sheryl Hill
 Sarah Hines
 Fr. Paul Hoffman
 David Hoffmann
 Peter and Marianne Houlihan
 Larry and Clarice Hug
 Frank and Jane Hyjek
 Cynthia Irrgang
 Mark Jensen
 Terrance and Pamela Jobe
 Matthew Karl
 Todd Katopodis and Kate Kelly
 Rosemary Kautzer
 James and Susan Keane
 Dolores Keefe
 George and Charlene Kelzer
 Anne Kemp
 Dianne Kessenich
 Travis and Amy Kjerstad
 Christopher and Susan Knauff
 William and Sandra Knauff
 Kathleen Koch
 Daniel and Therese Kosch
 Lawrence and Sheila Kraemer
 John and Barbara Krenn
 Carole Kron
 Donald and Marilyn Krueger
 Michael and Linda Laak
 John and Julie Labosky
 Paul and Roberta Lady
 John Lamb and Mary Pat Casey Lamb
 Gwendolyn Lander
 Kelly Laughlin and Gina Vera Laughlin
 James and Evelyn Lausen
 Laurie LaVigne
 Stuart and M. Kathleen Leisz
 John and Judy Lenhart
 Martin and Barbara Letscher
 Gordon Lewis
 Peter and Sheila Lind
 Christine Long
 Joseph and Teresina Longval
 Peter and Heather Lynch
 Craig Lyon
 Jason and Jamie Marshall

Dane Martin
 Jerry Martin
 Myra Martin
 Tom and Ann Martinelli
 Paul and Debra Martinson
 Delbert and Emma Mason
 Richard and Nelma Mavison
 Connor McBride
 Diane McBride Thompson
 James and Judy McCaffrey
 Logan McCloskey
 Jan McGlennon
 Dan McManus and Christina Cipolle
 Brother Arnold McMullen
 John and Molly McShane
 James and Sharon Meisnitzer
 Harry and Mary Melander
 Mark and Theresa Melles
 John and Roann Mezzenga
 Brad and Ashley Miller
 Janet Mooney
 Joyce Moran
 James and Nicole Morton
 Michael and Lynda Moylan
 Joseph and Mary Mulvehill
 Frederic Nemer
 Dale and Mary Neraasen
 Charles and Lisa Nicholson
 Steve Novak and Colleen Pacheco
 Scott and Sharon Offerman
 John and Ann O'Leary
 Robert and Tamara Olsen
 John and Patricia O'Malley
 Patricia O'Malley*
 Thomas and Gayle O'Reilly
 Steven and Mary Orfield
 John O'Toole and Mary Gallagher
 Guy and Mary Palmer
 Dean and Bonita Parkman
 Steve Penegor
 Floyd and Doris Peterson
 Christopher Philbin
 Dominic and Jean Plucinski
 Robert Pollmann
 Don and Barbara Portwood
 Colleen Powers
 Christian and Elizabeth Preus
 Leonard and Joanne Rabatin
 Alfred and Gloria Racchini
 Alfred and Catherine Rashid
 George and Marcia Reardon
 Fr. Michael Reding
 Michael and Lisa Reilly
 Hans Reiss
 Monica Restrepo
 Sam Richardson
 James and Helen Rockwell
 Kathleen Rosene
 Robert and Charlotte Ross
 Lewis Rotman
 Christi Rowan
 Charles and Linda Ruder
 James and Rosemarie Ryan
 Susan Rydell
 Charles and Maryanna Sarazine
 Annelless Sayer
 John and Carole Sayer
 Patrick and Margo Scallen
 Joseph and Janet Scheinost

Brian Schmidt
 Roger and Angeline Schnobrich
 Dave and Donna Schrantz
 Arturo Schultz and Frances Matos-Schultz
 James and Susan Schultz
 Wayne and Pat Schultz
 Trent Seaman and Amy Burns
 Stephen and Rita Seidel
 Larry and Arlene Selberg
 Jim and Judy Seward
 Patrick and M. Denise Shaughnessy
 James and Mary Sherburne
 Loras and Rosemary Sieve
 Karen Silvestri
 Betty Spartz
 Frank and Barbara Spinner
 Thomas and Joan St. Martin
 Al and Jane Steinkamp
 Kenneth Streeter
 Caroline Stroh
 Louis and Lezlie Taylor
 Thomas and Barbara Teresi
 Richard and Kellie Tesch
 Ed and Kate Thompson
 Darby Twesten
 Diane Vanderlinde
 Tim Vergin
 Dale and Jan Vesledahl
 Noel Vogen
 Dale and Nancy Wagner
 Dean and Shannon Wagnild
 Harry and Mabs Wahlquist
 Regina Wallen
 David Walsh and Lisa Holzman Walsh
 David and Kara Walter
 Patrick and Kathy Walter
 Thomas and Rea Wartman
 Michael and Paula Watkins
 Michael and Carol Weber
 Steve Weber
 Erik and Cathy Weis
 Jay Weis
 Grant and Victoria Wenkstern
 Robert and Mary Kay Werner
 Robert and Linda Westenberg
 Nancy Weyerhaeuser
 Mavis Wheelock
 Gloria Williamson
 John and Theresa Wise
 Charles Wiser
 Robert Wolohan
 Thomas and Jackie Zellmer
 Thomas and Mary Zins

Contributor

Anonymous
 Anonymous
 Anonymous
 John and Judith Adams
 Mark Adelman
 Pamela Anderson
 John and Julie Appert
 Brenda Banks
 Mary Battaglia
 Margaret Beahan
 Len and Kathy Beatty
 Mark and Mya Beaulieu
 DeWayne and Gerda Benedict
 Tom and Rita Bennett

Ken and Jean Benson
 Jerry and Jan Benusa
 Wilton and Faye Berger
 James and Janice Bernards
 Dennis and Mary Biros
 James and Ann Boulay
 Beverly Bowler
 William Bowler
 James and Tannica Bragiel
 Kathleen Brand
 James and Mary Pat Braun
 Tom and Bonnie Brever
 Mark Broderson
 Dean and Darlene Brown
 Richard and Carol Brozic
 Richard and Mary Jo Brumbaugh
 Mary Bump
 Robert and Maureen Burns
 Peter and Marsha Carlson
 J. Patrick and Mary Casey
 William and Judith Ciora
 James and Mary Clifford
 John Coleman
 Michael and Cynthia Collins
 Sharon Condon
 The Conlon Family
 Kate Connelly
 Kenneth and Mary Conry
 Carrie Smith Conway
 Craig and Ann Cooper
 James and Kae Crawford
 Kathleen Crawford
 Robert and Susan Cron
 Mary Culhane
 Darragh Cutter
 Marc and Cindy Cutter
 Elaine Deeney
 Lou and Nan DeMars
 Richard and Mary DesLauriers
 Joseph and Sarah Doll
 Susan Dombross
 Leon and Jeannette Duda
 Stephen and Lorraine Duffy
 Betty Dugan
 Mike and Vicky Dwyer
 Bill and Mary Eckenrod
 Glen and Ardiith Eiden
 Bernard and Jean Elsenbast
 Kenneth and Tenley Fasola
 Thomas and Margaret Faulhaber
 John Fennig and Martha Wright
 Barbara Feyereisen
 Bert and Amy Finsand
 Robert Blaise Fitzgerald
 Margaret Fose
 Marian Fox
 Barbara Fread
 Vince and Betty Freborg
 Stephen and Margaret Gadiet
 Daniel and Colette Gallagher
 Daniel and Jeanne Garry
 Bill and Susan George
 Dennis Gilbertson
 Joseph and Jacklyn Gill
 Thomas and Patricia Gilmore
 Anders Gode
 Frances Gonyea
 Carolyn Goodger
 John and Patricia Gries

Lyle and Lucille Grothe
Sharon Guimond
Terri Gulstad
James and Mary Ann Gunville
Dan Gustafson
Stephen and Sheila Gutierrez
Roger and Janice Halverson
Thor and Jasminka Halvorson
James and Sue Hamburge
James and Mary Hand
Eugene and Jean Hansen
Stephen and Katherine Hanson
William and Patricia Hart
C. R. and Elizabeth Heagle
John and Caral Heffernan
Steven and Jamie Held
Don and Pat Hewitt
Ronald and June Hiller
Dan and Marie Hitt
Randy and Shelly Hoff
Storey Holland
Glenn and Joan Horejsi
Patricia L. Houston
Rosa Mae Hromatka
Joseph and Linda Huber
John and Dorothy Hudacek
Geoffrey and Carol Hudson
Clarence and Bernice Hynes
Ed and Karen Iago
William and Becky Ingham
Ruth Ann Jackson
Jeri Jahner
Joyce Jallah-Cooper
James and Linda Janovsky
Audrey Jarosh
Dennis and Linda Johnson
Terry Johnson
Thomas and Susan Judd
Tom Byam and Jody Jurgens Byam
Thomas and Dolores* Kalb
James Kaster and Mary Pearson Kaster
Luke and Jillian Kaster
Ward Kierski
James and Mary Kimmel
Katie Kloster
Dean and Carol Koch
James and Nancy Kodadek
Michael and Judith Koski
William and Kathleen Kozlak
Wes and Valerie Kuhn
Lee and Carla LaBore
Gerald Lager
Jason and Heidi Lang
Thomas and Jean Lang
Mary Joan Larsen
Eugene and Georgianna Larson
Brad and Nicole Larson
Robert and Geraldine Lauer
James Lehan
Patrick and Mary Leizinger
Gary and Juliann L'Herault
Richard and Marjorie Licht
Barb Link
Doris Livingston
Patricia Livingston
Jenna Lofgren
Mark Loftus
Mark and Linda Lucke

Tom and Connie Lyke
John MacLean
Evelyn Maddaus
James and Lynda Mader
Michael and Virginia Mahoney
Jodi Malecha
Tim and Katie Martinelli
Jasper Matz
Ronald and Connie McClurg
James McGie
J. and J. McGill
Jack and Mary McGovern
Joan McHugh
James and Jeanne McManus
Helen McNulty
Mark and Amy Mernik
Yvonne Meunier
Ronald and Dolly Michalak
Joseph and Janet Michels
Robert and Mary Ann Mills
James and Marilyn Minford
Nancy Moehle
Pat and Laverne Montag
Rich and Sandy Mueller
Robert and Sharon Mueller
Catherine Mulvehill
Julie Murnan
Jeremiah and Kay Murphy
Brian and Karla Myres
Anthony and Jean Navarro
Kurt and June Neil
Lois Nelsen
Chuck and Marilyn Nelson
Eric and Mee Lee Nelson
Lorraine Nelson
Darlene Nemanich
John and Lorraine Neuberger
Paul and Sylvia Neumann
James and Jonell Niemeyer
Gayle Notermann
Vickie Novak
Fred and Betty Nylander
Mary Oberhauser
John and Patricia Oleksa
Michael Palach and Julie Ortler Palach
Tony Palumbo and Jill Brown
Suzanne Parrington
Charles and Susan Percival
Duane and Mary Kay Peters
Nicole Peters
Craig Peterson
Gerald Pettinger and Nancy Mischel
James and Dori Picard
Rodney and Mary Jean Pinkelman
Doug and Rita Podolak
Maryann Polivka
Vicky Powers
Jon and Susan Pumarlo
Edward and Janet Quinn
Lee and Patty Radermacher
Penny Reay
Robert and Janice Reinhardt
Lawrence and Beth Rocheford
Mary Harter Rode
Tom and Margaret Roe
Mary Rogers
John and Nancy* Ronhovde
Charles Rottinghaus and Kirsten Voss
James and Jeannine Roufs

Joan Rowe
William and Anne Ruede
John and Maret Ryan
Marge Salstrom
Patrick and Kim Salzer
Elmer* and Kathleen Sauer
Tom and Yvonne Sauer
Kathy Saunders
Thomas and Dolores Scanlon
Molly Schaaf
Henry Scheinost
Otto and Mary Schmid
Edward and Kathy Schoenecker
Jeffrey and Nancy Scholl
Peyton Scholdt
Matthew Schumacher
Russell Schumer and Judith Florestano
Carrie Seele
Milt and Dorianne Seifert
Michael and Judith Semsch
Ed and Cathy Shea
Merle and Marilyn Sheffield
Julie Siegert
Tom and Lee Ann Silver
Gregory and Rebecca Silvestri
Bobbie Walter Skemp
Karen Skepper
John and Doreen Skraba
David and Karen Smith
Frank and Mary Lou Starke
Daniel and Judy Stephens
Claude and Rita Stevens
J.P. and Patricia Strandberg
Bob Stroot
James and Margaret Sulzbach
Jayme Sundby
Jeffrey and Janet Sweetser
Philip Sweetser and Mary Ellen Kogut
Bruce and Arlene Taber
Bruce Taher
Shawn Taher
Elinor Temple
Ken and JoAnn Thaden
Deborah Theisen
Diana Tloutan
Elaine Tremmel
Leonard and Maryann Valley
Dick and Jean Van Keulen
James and Linda Vaughn
Greg and Kay Wacek
Joseph and Sharon Walbran
H. L. and Bridget Ward
Jean Ward
Marcella Wartman
Phabe and Rita Wartman
Ronald and Carolyn Weber
Jay Weber
Larry and Jane Westerbeck
Rienold and Jane Whiteford
Forrest Peiper and Mary Wickersham
Charles and Kristen Wilsey
Winfield and Karen Wood
Richard and Diane Wright
Barbara Yackel
William and LaWayne Yaeger
Gordon and Dana Yurich
Vincent Zattoni
Edie Zonneveld
Joshua and Anne Zuehlke

Corporations, Foundations and Organizations

Many businesses and philanthropic organizations support our school's education mission through gifts to the annual fund, to endowed and capital funds, to student scholarships, and to specific departments, programs, or student activities, including in-kind gifts of books, equipment and other educational materials. In addition, many corporations match gifts to Benilde-St. Margaret's by their employees. We are grateful to the organizations listed below that are partners in providing quality education.

Anonymous
Anonymous
Anonymous
Anonymous
Anonymous
3M Company
All Seasons Towing
Allina Health
Charles and Ellora Alliss Educational Foundation
Allodium Investment Consultants
Amcon Construction Company LLC
American Endowment Foundation
American Express Foundation
Ameriprise Financial Gift Matching Program
Anne's Dance Studio, LLC
Arch Insurance Group Inc
Arndt Electronics
ASI DataMyte
Austin Radiology, Inc
Bank of America
Banner Engineering Corp.
Barr Engineering, Co.
Bemis Company Foundation
BKBM Engineers Inc.
Boeing
Boston Scientific
Bremer Bank
Broyles, Rooks & Johnson, CPAs, P.A.
BSM Class of 2011
BSM Parent Association
BSM Raffles
The Julia Burke Foundation
Cannon Family Foundation
Cars With Heart
Catholic Community Foundation
Catholic Services Appeal Foundation
The Christian Brothers of Minnesota
Community Partnership
Culp Family Foundation

Curtis L. Carlson Family Foundation
 The Dance Warehouse
 Deborah Burnikel Foundation
 Deloitte Services LP
 Dent Wizard International
 Disciplined Growth Investors, Inc.
 John F. and Clara Dolan Foundation
 The Donaldson Foundation
 The Dorsey & Whitney Foundation
 DoTopia
 Douglas E. Mitchell Charitable Foundation
 Eaton Corporation
 Ehlers Investment Partners, LLC
 Emmet Holden Family Foundation
 Ferber Family Foundation
 Fidelity Investments Charitable Gift Fund
 Frana Companies
 Gage Family Foundation
 The Scott & Gina Gage Family Foundation
 Genentech
 General Electric Foundation
 General Mills Foundation
 General Mills
 Gilligan Foundation
 The Arthur and Constance Goodman Family Foundation
 Google Gift Matching Program
 John and Denise Graves Foundation
 Greater Twin Cities United Way
 Hansen Family Foundation
 Hexagon Investments
 High North, Inc.
 Honeywell Foundation
 Houlihan Insurance & Financial Services Inc.
 Huntley & Co. Interior Design
 IBM Corporation
 J. A. Wedum Foundation
 Joeys by Dar
 John Wiley & Sons
 JustGive.org
 The K Foundation
 Kopp Family Foundation
 KPMG
 Land O'Lakes Foundation
 Lincoln Property Company
 Major Avenue Hunt Club
 Mark and Karen Rauenhorst Family Foundation
 Marsh & McLennan Companies, Inc.
 Martin Lawn Service
 Martyn Service Company
 Mary Patricia Dingels Estate
 Mauer Chevrolet
 Maxfield Research Inc.
 Mayer Brown, LLP
 McKesson HBOC Foundation
 John & Jane McNeill Family Fund of the Catholic Community Foundation
 Medtronic Corporation
 Merilou Boutique
 Microsoft Giving Campaign
 MidwayUSA Foundation, Inc.
 The Minneapolis Clinic of Neurology, Ltd.

The Minneapolis Foundation
 Minnesota Independent School Forum
 Minnetonka Shores Insurance Agency, Inc.
 Morgan Stanley Wealth Management
 My Tribute Gift Foundation
 National Christian Foundation Twin Cities
 Network for Good
 New York Life Foundation
 The Nord Family Foundation
 North State Advisors Inc.
 Northeast Bank
 Northern Trust Charitable Giving Program
 Northwestern Mutual Life
 OneCause
 Opus Foundation
 Paquette Construction Company
 The Pentair Foundation
 Piper Jaffray Companies
 Pohlrad Family Foundation
 Principal Financial Group
 Prudential Foundation
 Pura Salon
 RBC Wealth Management
 Robert Moore and Patricia Moore Foundation
 Safari Club International
 Saint Paul Building & Construction Trades Council
 Sayer Charitable Foundation
 Scherer Brothers Lumber
 Schott Foundation
 Schwab Charitable Fund
 Scott County Community Development Agency
 Scottrade
 Second Story Sales
 Sheila Cronin Enterprises, Inc.
 Sisters of St. Joseph of Carondelet
 SMA Class of 1947
 Solutran
 St Victoria Church
 Stone Pier Foundation
 Taher, Inc.
 Tewksbury & Kerfeld
 Thomas Joseph & Sons
 Thomson Reuters My Community Program
 Thrivent Financial for Lutherans Foundation
 Tipperary Kerry Farms
 Ultimate Restoration, Inc.
 UrbanWorks Architecture LLC
 US Bancorp
 Virginia A. Haughey 2011 Charitable Lead Annuity Trust
 W. G. Christianson Foundation
 Weber Companies
 Wells Fargo Commercial Real Estate
 Wells Fargo
 Welsh Family Foundation
 William F. Foss, II Memorial Foundation
 Wyman Family Charitable Foundation
 Xcel Energy Foundation
 YourCause

Honors and Memorial Gifts

Memorial and honor gifts are a meaningful way to remember special people and celebrate significant events. These gifts exemplify the donor's regard for Benilde-St. Margaret's and for the colleagues, friends or family members honored here. The school is grateful to the following individuals and organizations that chose to mark the lives of a loved one through memorials or honoraria.

Gifts made in honor of

Benilde-St. Margaret's School
In honor of BSM's teachers and staff
 The Jones Family

Parker Breza, BSM Class of 2015
 Dawn Breza

Kayla Farrey, BSM Class of 2019
 Arndt Electronics
 James Farrey

The Noel Jacobson Family
 James and Tannica Bragiel

Tim Jump
 Patrick Freese

Mark Lex
 Mary Fran O'Keefe

Mary Fran O'Keefe
 Anonymous
 Jeffrey and Kathleen Adamson
 Matthew Adamson

Everett Palmer, BSM Class of 2019
 The Palmer Family

Annabel Justine Rathmanner, BSM Class of 2016
 Norma Cuderman

Richard and Linda Schunk
 Anonymous

Dennis and Elizabeth Sellke
 Adam and Mary Sellke

Jeff Steffenson
 Claudia Freese

Bob Tift
 Samuel Tift

Julie Timm and family
 Tracy Teyssier

Elaine Tremmel
 Adam and Mary Sellke

Vincent Zattoni, BSM Class of 2016
 Mavis Wheelock

Gifts made in memory of

Kathleen Anderson, SMA Class of 1952
 Cary and Regina Musech
 Mary Fran O'Keefe
 George and Marcia Reardon

Richard Barber
 Elaine Barber

Gary Bartlett, BEN Class of 1972
 John Cooper and Ann Ruff

Buck Buchanan
 Mark and Barbara Buchanan

Margaret Chelmo, SMA Class of 1962
 J.L. Meagher
 Tipperary Kerry Farms

Jane Clifford
 Anonymous
 Patrick and Mary Boldischar
 Richard and Carol Brozic
 Clayton and Irma Byam
 Tom Byam and Jody Jurgens Byam
 Mary Culhane
 Richard and Mary DesLauriers
 Richard and Jean Diaz
 Thomas and Margaret Faulhaber
 Timothy and Teresa Foster
 Bill and Susan George
 John and Carol Heffernan
 Gregg* and Carolyn Herrmann
 Edward Herzog and Deborah Anderson
 Storey Holland
 James and Nancy Kodadek
 Laurie LaVigne
 Thomas and Sheila Letscher
 Barb Link
 Michael and Virginia Mahoney
 Greg and Barb Melsen
 Catherine Mulvehill
 Anthony and Jean Navarro
 James and Jonell Niemeyer
 Mary Fran O'Keefe
 Francis and Nancy Rondoni
 John and Marilyn Ross
 Duane and Mary Frances Sather
 Thomas and Dolores Scanlon
 Thomas and Kathryn Sullivan
 Jeffrey and Janet Sweetser
 Tewksbury & Kerfeld

Murray Condon
 Anonymous

William Conway
 Kevin Conway

Paul Delmore, BEN Class of 1970
 Terry and Alison Larkin

Jeanne Dougherty, SMA Class of 1942
 William Dougherty

Frank Dunbar

Anonymous
 Stuart and Romy Ackerberg
 Ronald and Kathleen Aho
 Amcon Construction Company LLC
 Mark and Mary Anderson
 John and Julie Appert
 Robb Bader
 Ron Bader
 Scott and Kerry Bader
 Sid Bader
 Dennis Balyeat
 Julio and Gracia Battistoni
 Rick and Grace Battistoni
 Marianna Bauer
 Margaret Beahan
 Mark and Mya Beaulieu
 DeWayne and Gerda Benedict
 Wilton and Faye Berger
 BKBM Engineers Inc.
 Noah Bly
 John and Lisa Boerboon
 Cassie Bordeau
 James and Mary Pat Braun
 Tom and Bonnie Brever
 Thomas and Laurie Burns
 Robert and Susan Burns
 Kristen Long Cacciatore
 Peter and Marsha Carlson
 Todd and Nancy Christopherson
 William and Judith Ciora
 James and Mary Clifford
 Michael and Cynthia Collins
 Sharon Condon
 Kate Connelly
 James and Mary Connelly
 Peter and Mary Jo Conzemius
 Craig and Ann Cooper
 Kim and Carol Culp
 George and Carol Daum
 Deloitte Services LP
 Lou and Nan DeMars
 Charlie Dillon
 Betty Dugan
 John and Beverly Dunbar
 Edward Dunbar
 Mike and Vicky Dwyer
 Bill and Mary Eckenrod
 Ehlers Investment Partners, LLC
 Paul and Laura Ekholm
 Tom and Katherine Emmel
 Erinn and Shane Farrell
 Dan Flicek
 Timothy and Teresa Foster
 Frana Companies
 Vince and Betty Freborg
 Jeffrey and Justine Fritz
 Wood Kidner and Susan Funk
 Daniel and Colette Gallagher
 Daniel and Jeanne Garry
 Dennis Gilbertson
 Thomas and Patricia Gilmore

Anders Gode
 Matthew Gruber
 Terri Gulstad
 Dan Gustafson
 Stephen and Sheila Gutierrez
 Timothy and Katherine Hamill
 Thomas and Joyce Hansen
 Hugh and Mary Hanson
 Stephen and Katherine Hanson
 Roy and Candace Hein
 John and Diane Herman
 Hexagon Investments
 George Hicks
 Allen and Sheryl Hill
 Mike Hipp
 Greg and Patricia Hoyt
 Geoffrey and Carol Hudson
 J. A. Wedum Foundation
 Kevin Becker and Susan Jalics Becker
 James and Linda Janovsky
 Mark Jensen
 Dennis and Linda Johnson
 Terry Johnson
 Matthew Karl
 Katie Klostter
 Michael and Judith Koski
 John and Barbara Krenn
 Carole Kron
 Brad and Nicole Larson
 Barry and Renee Levins
 Richard and Marjorie Licht
 Lincoln Property Company
 Peter and Sheila Lind
 Jenna Lofgren
 Christine Long
 Craig Lyon
 Major Avenue Hunt Club
 Jodi Malecha
 Dane Martin
 Jerry Martin
 Myra Martin
 Tim and Katie Martinelli
 Tom and Ann Martinelli
 Francesca Martonffy
 George and Rita Marx
 Maxfield Research Inc.
 Mayer Brown, LLP
 Jack and Mary McGovern
 Harry and Mary Melander
 Brad and Ashley Miller
 Pat and Laverne Montag
 Michael and Laurel Murry
 Brian and Karla Myres
 Bob Naegele, III
 Robert and Ellis Naegele
 Philip Niehoff
 North State Advisors Inc
 Northeast Bank
 Steve Novak and Colleen Pacheco
 Mary Fran O'Keefe
 Michael and Susan Pagh
 Tony Palumbo and Jill Brown

Michael and Mary Lynne Perushek
 Duane and Mary Kay Peters
 Nicole Peters
 Maryann Polivka
 Don and Barbara Portwood
 Vicky Powers
 John and Janice Reiser
 Francis and Nancy Rondoni
 Kathleen Rosene
 Lewis Rotman
 Saint Paul Building & Construction
 Trades Council
 The Saint Paul Foundation
 Marge Salstrom
 Michael and Ellen Sayer
 Scherer Brothers Lumber
 Brian Schmidt
 Edward and Kathy Schoenecker
 Scott County Community Development Agency
 Carrie Seele
 Ed and Cathy Shea
 Julie Sievert
 Tom and Lee Ann Silver
 Karen Skepper
 Frank and Mary Lou Starke
 Kenneth Streeter
 Bob Stroot
 Thomas and Kathryn Sullivan
 Richard and Kellie Tesch
 Deborah Theisen
 Thomas Joseph & Sons
 John and Jill Trautz
 UrbanWorks Architecture LLC
 Tim Vergin
 Dale and Jan Vesledahl
 Charles Rottinghaus and Kirsten Voss
 Greg and Kay Wacek
 Dale and Nancy Wagner
 David and Kara Walter
 Thomas and Rea Wartman
 Weber Companies
 Michael and Carol Weber
 Steve Weber
 James and Jennifer Weichert
 Erik and Cathy Weis
 Jay Weis
 Wells Fargo Commercial Real Estate
 Larry and Jane Westerbeck
 David and Megan Wohlwend
 Robert Wolohan
 Gordon and Dana Yurich

Betty Ferrian

Sean and Carol McNamara
 Mary Fran O'Keefe
 Norm Swett and Natalie Ramier

Eugene Fritze

Thomas and Sheila Letscher
 Mary Fran O'Keefe

Roselyn Glenn, SMA Class of 1956

David Glenn

Mark Gonsior, BSM Class of 1989 - Gonsior Memorial Scholarship

Joseph and Mary Patricia Abraham
 Huntley & Co. Interior Design
 Tricia Huntley
 Robert and Anne Kimmel

Mark L. Graham, Sr. and Billie Quigley

Graham, *alumni/ae parent*
 Teresa Graham

Anne E. Graham-Munn, SMA Class of 1969

Teresa Graham

Diane Grunewald

John and Nancy Lawlor
 Cary and Regina Musech
 Mary Fran O'Keefe

Patricia Hansen

Mary Fran O'Keefe

Lucille Hartwig, SMA Class of 1931

Barbara Castaneda
 Lexie Chudyk Kastner
 Barbara Yackel

Chuck Hastings

Ameriprise Financial Gift Matching Program
 Hazel Hastings
 James and Milissa Mahoney
 Cary and Regina Musech
 Mary Fran O'Keefe
 Craig and Maureen Shaver

Scott Hawkinson

Fred Goldberg and Rosalie Weisman Goldberg
 Mary Fran O'Keefe

Angeline Hengel

Michael and Beth Hawkins

Melissa Herbert, Class of 1987

Kelli Nemer

Therese Jacob

Mary Fran O'Keefe

Lorraine Janda

Thomas and Christine Janda

Dolores Kalb

Mary Fran O'Keefe

Marjorie Keefe

Michael and Beth Hawkins

Sandra Kelley

Fred Goldberg and Rosalie Weisman Goldberg
 Michael and Beth Hawkins
 The Kelley Family
 Mary Fran O'Keefe
 Derek and Calley Roers
 Ronald and Carolyn Weber

Joan Klein
John and Kitty Klein

Stephen Kostick, BSM Class of 1989
Joseph and Mary Patricia Abraham

Bruce Kramer
Marc and Mary Andersen
Fred Goldberg and Rosalie Weisman Goldberg

Isabel Krieger
Marc and Mary Andersen
BSM Parent Association
Fred Goldberg and Rosalie Weisman Goldberg
Pat Krieger and Jennifer Ott Krieger
Mary Fran O'Keefe

Anne Molina Lukas, BSM Class of 1993
Anonymous

Grace Lundeen
Mother of Jane Goodrich and grandmother of many BSM alums
Mary Fran O'Keefe

Robert Lynch
Mary Fran O'Keefe

Gene Madden, BEN Class of 1962
Dean and Bonita Parkman
David and Joan Sauer

Anne Mandile, SMA Class of 1938
James and Kathleen Nordstrom

Lorraine Matuzek, SMA Class of 1947
Rosemary Lentsch

Thomas McDonald
Marc and Mary Andersen
Fred Goldberg and Rosalie Weisman Goldberg

Kevin McNamara, BEN Class of 1973
US Bancorp

John McPherson, BSM Class of 1991
John and Amanda Campbell
Mary McPherson

Leo Meagher
J.L. Meagher
Tipperary Kerry Farms

Margaret Meagher
J.L. Meagher
Tipperary Kerry Farms

Edward Meszaros
John and Caral Heffernan

Corinne A. Moen
Eugene and Georgianna Larson
Mary Fran O'Keefe
Norm Swett and Natalie Ramier

Lois Naughtin
Cary and Regina Musech

Charles Nelson
Eric and Mee Lee Nelson

Patricia O'Malley, SMA Class of 1952
John and Patricia O'Malley

Mary Jane Peters, SMA Class of 1938
Robert and Karen Shull

Mary Sue Pierce, SMA Class of 1960
Paul Krotz and Kathy Quandt

Bob Preston
Michael and Beth Hawkins

Maryanne Reed, SMA Class of 1964
James and Kathleen Nordstrom

James Reger, BEN Class of 1971
Carrie Smith Conway
Mary Fran O'Keefe
Guy and Mary Palmer
Robert and Karen Shull

Helen Schoenberger Reiss, SMA Class of 1950
Hans Reiss

Linda Rocheford, BSM Class of 1976
Mary Fran O'Keefe

Patricia Rosinek, SMA Class of 1942
Patricia Hoy Orth
Joan Rowe
Regina Wallen

James Ryan
Jerome Burns
Michael and Lisa Rogers
Brother Robert Walsh F.S.C.

Mary Sardelli, SMA Class of 1964
J.L. Meagher
Tipperary Kerry Farms

Kevin Schieffer, BSM Class of 1977
Jeffrey and Laura Bretson
Thomas and Anne Pittman

Mary Schnellman, SMA Class of 1961
William and Kathleen Kozlak

Robert Shellum
Fred Goldberg and Rosalie Weisman Goldberg

Ronald Snell
Fred Goldberg and Rosalie Weisman Goldberg
Michael and Beth Hawkins

Robert Stockdill
Fred Goldberg and Rosalie Weisman Goldberg

Gregory Suddendorf, BEN Class of 1965

Pamela Anderson
ASI DataMyte
James and Janice Bernards
Dean and Darlene Brown
Robert and Maureen Burns
Mark and Christiana Christiansen
Kim and Carol Culp
Culp Family Foundation
Mina Daly
Stephen and Lorraine Duffy
Michael and Sharon Dukinfield
John Dupont
Edward and Antoinette Egan
Joel and Mary Ann Eftmann
Bert and Amy Finsand
Barbara Fread
Tom and Mary Kaye Gorrilla
John and Patricia Gries
Roger and Janice Halverson
James and Sue Hamburgue
C.R. and Elizabeth Heagle
Donald and Julianne Herman
Sarah Hines
Randy and Shelly Hoff
Joseph and Linda Huber
Ruth Ann Jackson
Thomas and Susan Judd
Travis and Amy Kjerstad
Gwendolyn Lander
Jason and Heidi Lang
Peter and Sheila Lind
Patricia Livingston
James and Dolores Lucas
Jason and Jamie Marshall
J. and J. McGill
John and Molly McShane
Greg and Barb Melsen
Mark and Amy Mernik
The Minneapolis Clinic of Neurology, Ltd.
James and Nicole Morton
Catherine Mulvehill
Joseph and Mary Mulvehill
My Tribute Gift Foundation
Kurt and June Neil
Northwestern Mutual Life
Gayle Notermann
Mary Fran O'Keefe
Suzanne Parrington
Steve Penegor
Craig Peterson
Doug and Rita Podolak
Edward and Janet Quinn
Mark and Karen Rauenhorst
James and Helen Rockwell
Mary Rogers
Francis and Nancy Rondoni
John and Maret Ryan
Patrick and Kim Salzer
Anneliess Sayer
Sayer Charitable Foundation
John and Carole Sayer
Michael and Susanne Scherer
Patricia and Jerry Scott

Milt and Dorianne Seifert
Michael and Judith Semsch
Robert and Karen Shull
Bill and Joan Slattery
St Victoria Church
Elinor Temple
Dean and Shannon Wagnild
H. L. and Bridget Ward
Wells Fargo
Grant and Victoria Wenkstern
Robert and Linda Westenberg
Rienold and Jane Whiteford

Michael Taber, BSM Class of 1991
John and Amanda Campbell

Thomas Tremmel
Adam and Mary Sellke

Kay Sammon Wade, SMA Class of 1954
Gerald and Kathy Gretscht

Fr. Arnold Weber
Clara Dolan
Joseph and Lynn McCarthy
Leonard and Joanne Rabatin
Charles and Linda Ruder
Ernie and Mary Stelzer

Virgil Weber
Dale and Mary Alberts

Kathleen Weiler, BSM Class of 1988
William and Judith Weiler

Jim Werner
Tammy Levi

Mary Wesley
Tor and Beth Gloppen

Rachel Woell
Tom and Mary Kaye Gorrilla

Roberta Zattoni
John Zattoni and Lynette Wheelock
Mario Zattoni
Vincent Zattoni

A Knight for All Seasons Supporters

Benilde-St. Margaret's is more than a school; it is a community. Our *Knight for All Seasons* auction plays a vital role in fostering the sense of community and reinforcing the ties between fellow parents, alumni, faculty and staff, and friends of BSM.

Additionally, this event provides vital funds to the school's operating budget each year. Last year, our *Knight for All Seasons* auction provided general operating support for the school as well as tuition assistance for our students.

We are grateful for the individuals and organizations that contributed to making our evening such a success.

Individual Supporters

Anonymous
Anonymous
Anonymous
Anonymous
Anonymous
Anonymous
Anonymous
Anonymous
Anonymous
Anonymous
Anonymous
Anonymous
Anonymous
Anonymous
Anonymous
Steven and Laura Alexander
Geoffrey and Kathleen Allen
Marc and Mary Andersen
David and MaryBeth Anderson
Marc and Molly Anderson
Steve and Michelle Anderson
John Ankeny and Virginia Lupo
Peter and Oufreez Argenta
Kenneth and Ann Ashton-Piper
Mark and Susan Austin
Michael and Suzanne Austin
Lee and Silvia Bachman
Charles and Paula Baker
Brian and Sandra Barry
Daniel and Lisa Basil
Anthony and Kimberly Baxter
Tom and Carol Berger
John and Cheryl Besse
Chris Beutz and Julie Lautigar-Beutz
John and Jennifer Beutz
Peter and Lizabeth Birkeland
Brian and Lisa Biwer
Archie Black and Jane McDonald Black
Lawrence and Diane Blake
Greg and Maria Bliss
Tony and Elizabeth Boase
Peter and Rebecca Boosalis
Michael and Gretchen Bransford
Richard and Laura Bray
Thomas and Sharon Brennan
Peter and Maura Brew
Jeffrey and Victoria Brink
David and Katherine Bromelkamp
William and Lynn Brown

Jennifer Bucklew
Robert and Susan Burns
Robert and Marney Buss
John and Leslie Cadle
William and Kelly Calengor
Scott and Kristine Carlston
Benjamin and Molly Carpenter
Scott and Louann Carpenter
Gregory and Cathy Carr
James and Kimberly Cassens
Manisha Chainani
Anthony and Mary Ann Clacko
Paul and Corrina Conley
The Conlon Family
Kevin and Maristel Conry
Daniel and Sharis Cooley
John and Brenda Cooney
Lawrence Cosslett and Sara Mortimore
Scott and Amy Creutzmann
James and Mary Cron
Earl and Jennifer Cutter
Jim and Amy Dailey
Donald and Cheryl Dale
Patrick and Michelle Daly
Jeff and Monette Day
Kerrwin and Kathleen Dempsey
Michael and Meghan DesLauriers
Tom and Katy Dickson
Finlay and Tracey Donesky
Scott and Elizabeth Dorn
Thomas and Stephanie Drees
Gerald and Nancy Driessen
Kenton and Sharon Ebeltoft
Todd and Leslie Eberhardt
Scott and Angie Effertz
Paul and Kathryn Ehlen
Timothy and Cynthia Ehlen
Albert Fan and Susan Wollan Fan
John and Susan Farrell
Roy and JoAnn Ferber
Gerard and Tiffane Ferrer
James Fingerman and Elizabeth Williams
Marcus and Wendy Fischer
Joseph and Stephanie Fitzgerald
Eric Flom and Nancy Nelsen-Flom
R. Jess and Catherine Ford
Eric and Lisa Fortney
Thomas and Karla Fournier
Christopher and Connie Fredin
Ted and Mary Freese

Stephen and Jennifer Frenz
James Friction and Delia Dall'Arancio
Robert and Sarah Frost
Daniel and Susan Gallaheer
David and Miriam Gannon
James and Gerri Gefre
Adam and Lisa Gelling
Christopher and Tracy Gernentz
David Gorman and Alison Forney-Gorman
Benjamin and Lindsay Graves
Gregory and Maureen Grazzini
Eric and Kristen Gregerson
Arnie and Jane Gregory
Matthew Griebie and Jeannie Larson
Neal and Julie Guggemos
Mark and Rosemary Guidinger
Daniel and Erika Gulbrandson
Vidal Guzman and Lidibette Rosado-Guzman
Kevin and Kristine Gyolai
Thomas and Joyce Hansen
Tim Hanske
Hugh and Mary Hanson
Robert and Monique Hathaway
Matthew and Jacqueline Haughey
Herschel and Lisa Herndon
Christopher and Elizabeth Hickok
Clay and Charlotte Hoes
James and Kim Horton
Kay Huff
Douglas and Julianne Hunter
Kevin and Christina Huson
Peter and Julie Hyjek
Stephen Imholte and Rachael Scherer
Michael and Leslie Jablonski
Rob and Julie Jacob
Shaun and Kristin Jamison
Thomas and Christine Janda
Jay and Susan Jensen
John and Angela Jerabek
Timothy and Carol Jewett
Dennis and Linda Johnson
Todd Johnson and Elizabeth Butler
The Jones Family
John and Kristin Joseph
Andrew and Kae Kaskie
The Kelley Family
Ray and Amy Kelly
Margaret Kenneally
Doug and Roxanne Kennedy
Steve and Tammy King

Lee Kitzenberg
Bruce and Susan Kleven
James and Mary Kay Kopp
Michael and Judith Koski
Mark and Sheila Kraemer
Richard and Barbara Kramer
Andrew and Amy Krane
PK Kriha
Richard and Laurel Kroll
Kurt and Julie Krumenauer
Paul Krotz and Kathy Quandt
Richard and Leslie Kupchella
Michael and Ellen Lamb
Andrew and Molly Larew
James and Anne Marie Larson
John and Nancy Lawlor
Peter and Monica Lawyer
Joseph and Byoung Lee-Gilligan
Michael and Cynthia LeJeune
William and Carol Lenington
Steve and Janet Lerch
Thomas and Sheila Letscher
Scott Levin
David and Mia Liebl
Albert and Mary Beth Liekhus
Jim and Heidi Lindahl
Walter and Constance Linder
Jean Lindquist
Michael and Mary Sue Long
The Lowenberg Family
Phong and Jacqueline Luong
Wade and Nancy Lykkehoy
Dennis and Lynn Lynch
Gerald Lynch and Annette Lee
John and Susan Mack
Francis and Margaret Magill
Wade and Jill Malcolm
Michael and Carrie Martino
Troy and Teresa Marusich
Keith McCracken and Deborah Geiger-McCracken
Patrick and Lori McTigue
Penny Meier
Mark and Cynthia Melin
Ted and Laura Merriam Family
Kera Messinger
David and Laura Miller
Ryan Mills
David and Anne Moen
Terrance and Anne Moore

Lights, Camera AUCTION

Mark and Kristen Moran
Michael and Jennifer Moroz
Kirt and Margaret Mostrom
Les and Tracy Mouser
Patrick and Leah Moyneur
John and Kimberly Mueller
Charlie Mullin
Shawn and Amy Murnan
William and Carolyn Murnane
Daniel Murphy and Lisa Lenhart-Murphy
Timothy and Katherine Murphy
Patrick and Jennifer Murry
Keith and Patricia Myhre
Marc and Lisa Nanne
Jeffrey and Terri Naughtin
Douglas and Judith Nelson
Patrick and Laura Nelson
John and Kirstin Nesbitt
Tracy and Kathleen Nevells
John and Margrette Newhouse
Timothy and Stacey Nichols
Gregory and Meredith Nyberg
John O'Connor
Michael and Tracy O'Connor
Chris and Rachel Olson
Mary Fran O'Keefe
Jeffrey and Laura Olejnik
Patrick and Anne Olk
Richard and Susan Olson
Frank and Carolyn Ondrey
Scott and Peggy Oppenheimer
The Parece Family
Scott Parker
Christopher and Nancy Patton
Gene and Jane Paul
Troy and Lucia Paul
Robert and Michelle Paule
Christopher and Christeen Paulison
Thomas and Diane Philbin
Mark and Carla Platt
Sheila Plunkett
John and Catherine Pohlard
James Pohle and Susan Eich
Stephen Pohlen and Christine Glisczinski
John Potter and Julie Churchill
Kenneth and Amy Pucel
Theresa Puffer
Michael and Jennifer Qualen
Gregory and Laureen Ramel
Phil and Kathy Rasmussen

Richard John and Mary Renk
Curt and Joan Reynders
Daniel and Leigh Ann Riley
James and Brenda Ritten
Paul and Heather Rocheford
Nicolle Rockhold
Randall and Gail Ross
John and Tracie Rossman
James and Mindy Roux
Lawrence and Kathryn Rust
Dennis and Maureen Ryan
Tom Sadowski and Kirki Schultz
Patrick and Ann Sauer
Kristopher and Georganne Scherer
Mark and Heather Scherer
Peter L. and Geri G. Scherer Family Fund of
The Minneapolis Foundation
Karl and Ellen Schmidt
Jon and Maureen Segner
Daniel and Helena Seidel
Adam and Mary Sellke
Larry Semler and Karen Dorn
Christopher Setchell and Adrienne Leahey
Kevin and Deborah Shields
Michael and Jennifer Shinnors
The Sipes Family
Dennis and Sandra Smith
Donald and Annemarie Smithmire
Mark and Phuong Snell
Stephen and Dana Sohm
Delurschel and Janet Sparkman
Mark and Jolene Spindler
The Sposito Family
Lester and Kristin Stanley
Francis and Jane Steck
Dr. Jonathon Steele
Tyler Stefan
Al and Jane Steinkamp
Patrick and Sandra Stone
George and Roseanne Strand
Mark and Julie Sullivan
Bruce Taher
Jeffrey and Barbara Thies
Bob and Anna Tift
Karl and Teresa Tourville
Gary and Mary Tucker
James and Whitney Tucker
David and Julianne Turk
Robert and Julie Beth Vipperman
Joseph Vochko

John and Deborah Wagner
Gregg and Karen Waldon
Thomas and Nancy Wallrich
Todd and Malou Watterson
Kevin and Michelle Weber
Ronald and Carolyn Weber
Tim and Kris Webert
Nancy Weyerhaeuser
Mark and Pamela Whitmore
Thomas and Angie Wicks
Deb Wieberdink
Brad and Jenifer Williams
Douglas and Margaret Williams
Bruce Wilson and Kathryn Mrkonich Wilson
Scott and Jill Wine
Mark and Sarah Winston
Charles and Jeanine Wirth
Murray Wolf and Elizabeth Atkinson
Molly Wright
Shay and Brenda Wyley
Michael and Mary Yazvec
Nicholas and Kimberly Zagaros
Michael and Elissa Zeman

Corporate Donors

Anonymous
Afton Alps
Annie Marie Photography
Bayview Event Center
Bella Salon and Spa
Bergstrom Jewelers
Bessie's Boutique
Biaggi's Ristorante Italiano
Brit's Pub
Broadway Awards
Bunny's Bar and Grill
Candlelight Floral
Catholic Community Foundation
Chyten Educational Services
Cookies By Design
Cutter Homes, Inc.
Dale Studios
Dunn Brothers at The Freighthouse
Edina Grill
Edina Realty City Lakes
Edina Realty Mortgage City Lakes
Ferber Family Foundation
Fleurish LLP
Footprint Studio
Great Harvest Bread Company
Green Mill
Hello Pizza
Homes by Hanson, Inc.
Honey and Rye Bakehouse
Kaskaid Hospitality
La Belle Vie
La Cocina de Ana
Landmark Theatres
Latuff's Pizzeria Family Restaurant
Let's Dish
Lexus of Wayzata
Linsk Flowers
Lunderby Photography, Inc.
MacPhail Center for Music
Mall of America
The Minneapolis Foundation
Minnesota Zoo
Morrie's Minnetonka Mazda
Murray's Restaurant
Noodles & Company
Park Tavern
Pilgrim Cleaners
Pipka's of Door County
Poquet Auto Sales
Prom Catering
Punch Neopolitan Pizza
RBC Wealth Management
Red Cow Restaurant
Salon Ma Jolie
Scandia Down
Schuler Shoes
Scoreboard Bar and Grill
Snuffy's
Solid Foundations Home Inspections
Spasso Restaurant
St. Louis Park Rec Center
Stifel Nicolaus Associates
Taher, Inc.
Tailors On Blake
Tannenbaum Holiday Shop
The General Store
The Italian Gourmet
Thorpe Distributing Co.
Three Rivers Park District
Village Chevrolet
Wakame Bistro
Waxing the City
Wilkins & Olander
Woody's Furniture



Benilde-St. Margaret's

A Catholic, college preparatory school, grades 7 - 12

2501 Highway 100 South, St. Louis Park, MN 55416

Non-Profit Org.
U.S. Postage
PAID
Twin Cities, MN
Permit No. 2277

Annual Report Enclosed



The 2016 Hall of Honor Celebration and Awards Dinner | Monday, February 1, 2016

Reception | 5:30-6:30 p.m.
Dinner and Program | 6:30 p.m.



The Hall of Honor is a recognition program designed to consistently and publicly honor the heritage of BSM, salute the dedication and service of the volunteer community, and reward the professional longevity of employees.

The 2016 honorees have made a significant contribution to the lives of many in the Benilde-St. Margaret's and greater community. *Your attendance at this dinner and awards ceremony would be a meaningful tribute to them.*

Red Knight Leadership Award | Tom and Joyce Hansen
Lisa Lenhart-Murphy '86
Carol McNamara

Distinguished Alumni Award | Ann Markusen '64
Dan Delmore '72
Erik Madigan Heck '02

Volunteer Service Award | Kathy Dillon
Anna Tift

Twenty-Year Club Inductees | Rosalie Goldberg
Mary Joranger Neraasen '76
Jerry Pettinger