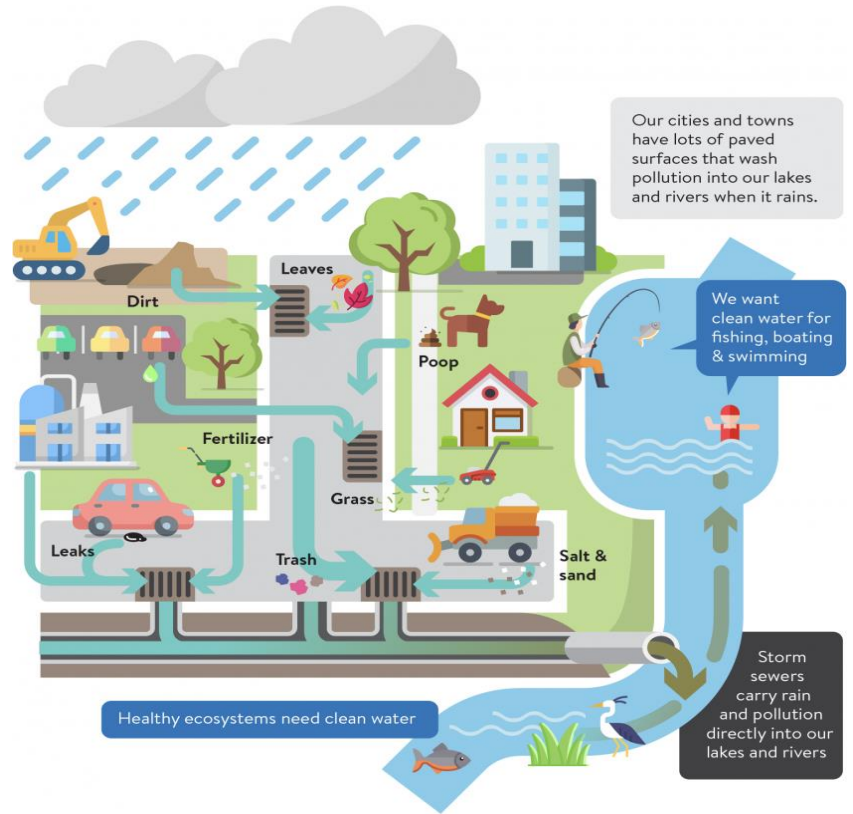


STORM WATER TRAINING

STAFF EDUCATION

WHAT IS THE DIFFERENCE BETWEEN THE STORM DRAIN SYSTEM AND THE SEWER SYSTEM?

- Indoor drains, like kitchen and bathroom plumbing, mopsinks, and toilets, are connected to the sewer system, which flow to treatment plants where pollutants are removed.
- Outdoor drains, like those in the street, parking lots, sidewalks, landscaping, and other, are connected to the storm drain system, which flows untreated to local waterways and eventually the ocean.



WHAT KIND OF POLLUTANTS ARE A PROBLEM?

- Pretty much everything! Dirt, leaves, oil from cars, pet waste, trash, pesticides, fertilizer, soap, etc. are all common pollutants that harm downstream wildlife and make water unsafe for swimming, fishing, and other recreational and commercial uses when they are washed downstream by rain or other runoff.
- Look up the condition of your local watershed, here: <http://www.projectcleanwater.org/> (click on "Watersheds")

WHAT IS THE DISTRICT DOING, AND WHAT CAN I DO, TO PROTECT WATER QUALITY?

- The District has a Storm Water Management Plan that includes proper cleaning and disposal practices, equipment maintenance, and training you! Do your part to keep storm water clean by learning and following these procedures, and notifying appropriate staff when you identify a pollutant source.



See Reverse for training log



