

STORM WATER TRAINING

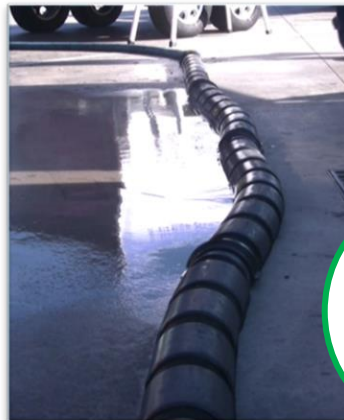
JETTING & POWER WASHING

CAPTURE ALL WATER USED FOR STORM DRAIN MAINTENANCE

- Use dry methods for storm drain cleaning whenever possible to reduce the potential for discharge to the storm drain system.
- Use a vacuum, or equivalent, positioned at a downstream portion of the conveyance, to collect wastewater.
- Collected wastewater may be disposed of to the sanitary sewer system or a landscaped area for infiltration.



Needs Improvement



Better!

PREVENT THE DISCHARGE OF ALL WATER USED DURING CLEANING

- Protect all inlets (using mats and sandbags, etc.) prior to washing activities, to ensure no wastewater enters the storm drain system.
- Ensure all personnel performing maintenance are trained on proper practices, and provided with any necessary tools for recollection (vacuum boom, squeegee, etc.).
- Ensure contract language for any outside party performing maintenance includes storm water language that requires adherence to storm water regulations

REASON FOR ACTION:

Storm drains may become blocked or impacted with debris. Jetting and power washing may be necessary to ensure storm drain systems are functioning properly. School facilities can do their part to be good neighbors and protect water quality by ensuring all maintenance personnel and contractors are aware of storm water requirements when storm drain or other cleaning is necessary.



See Reverse for training log



