



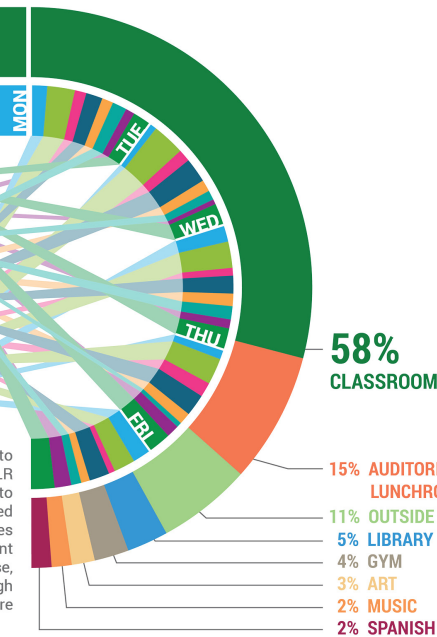
HUBBARD WOODS



Hubbard Woods School opened in 1918 with additions in 1923, 1925, 1930, 1953, 1991, and 1999 on a 3.1-acre site. The school's gross square footage is 48,910 square feet, with an optimal capacity of 272 students.

PERCENTAGE OF TIME SPENT AT A LOCATION IN A MODALITY

17% FACILITATED
8% LECTURE
8% PRESENTATION
9% LARGE GROUP
16% SMALL GROUP
8% PAIRS
21% INDEPENDENT
11% TECHNOLOGY



This Education Master Facility Plan, Future Ready D36, is a comprehensive look at your schools. In addition to physical condition, size and other practical measures, DLR Group is qualifying the buildings relative to their ability to foster the progressive learning that Winnetka is renowned for today as well preparing for progressive 2.0 and the types of spatial diversity and plurality that will support student exploration and collaboration in the future. In this phase, we gathered data on how learning is happening through student shadowing and activity logging. The results are captured in this graph above.

TOP 5 TAKE-AWAYS

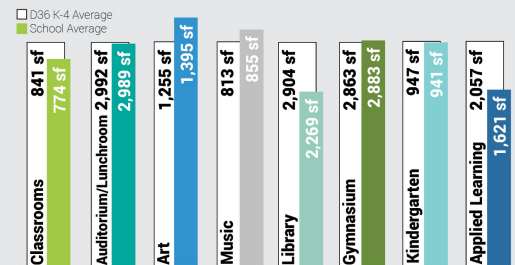
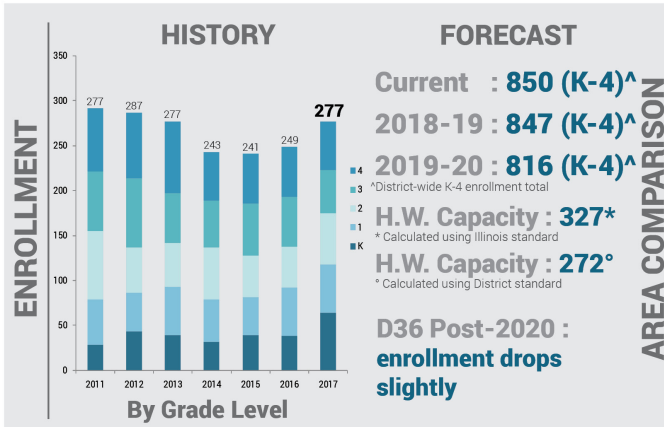
LISTENING TOUR

- Need an actual lunch room with windows
- Access to outdoor learning spaces
- Love character/history of the school
- School is the "heart of the neighborhood"
- Improve pathways through building

An all staff meeting (Listening Tour) was held at each school where faculty gave input about the strengths and weaknesses of the building. Architects and Engineers assessed each building noting deficiencies in material finish and code compliance.

PHYSICAL CONDITION

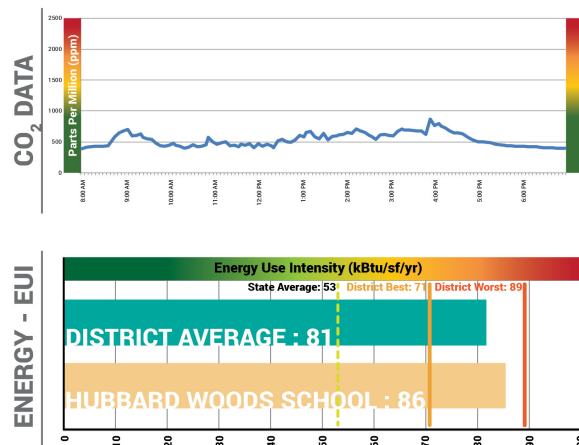
- Replace steam piping
- Damaged/cracked floor tile
- Rooftop equipment at useful life
- Some classrooms not accessible
- Replace boiler burner



180 square feet per student : **188** square feet per student

Hubbard Woods School : 2015 National Median*

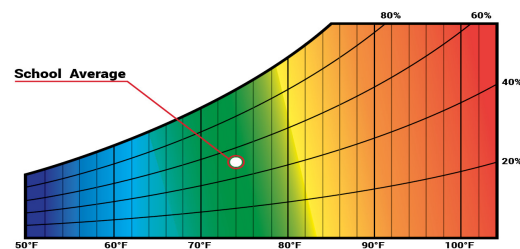
* This comparison notes the difference between Hubbard Woods area per student in comparison to the current National average as noted in the 2015 School Construction Report. The Future Ready process will produce outcomes pertinent to the District as a whole. This is just one metric to compare space.



Did you know . . .

85% of people uncomfortable with thermal environment during IEQ survey
Classrooms are over-lit by artificial light
Indoor air quality metrics reaching beyond optimized thresholds

THERMAL COMFORT



Important note: The September week that was logged was unseasonably temperate (cooler) than in recent years or even as observed this past week with temperatures in the 90s. Wide fluctuation in interior temperatures and humidity was personally observed by our engineers. Thermal comfort issues were widely reported by faculty and staff as well. This is a significant issue and will need to be addressed.

How is this information collected?

The DLR Group team collected data through the use of environmental sensors, District energy bills, and logging equipment. The sensors were placed in several rooms where they logged data from one to seven days. Spot measurements and multiple devices were then used to validate the results.

