



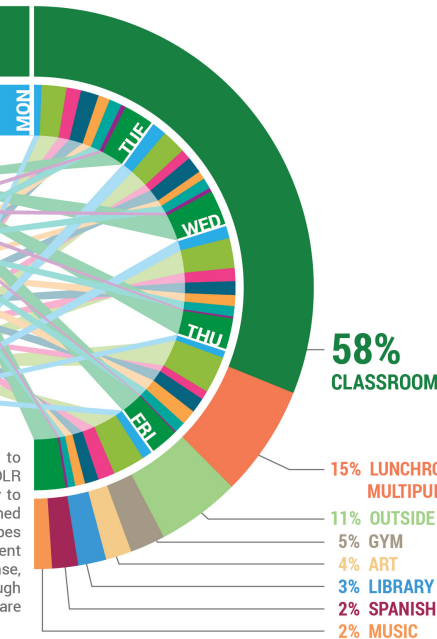
GREELEY SCHOOL



Greeley School was built in 1913 with additions in 1921, 1954, and 2009 on a 3-acre site. The school's gross square footage is 68,277 square feet, with an optimal capacity of 272 students.

PERCENTAGE OF TIME SPENT AT A LOCATION IN A MODALITY

25% **FACILITATED**
2% **LECTURE**
8% **PRESENTATION**
9% **LARGE GROUP**
12% **SMALL GROUP**
10% **PAIRS**
24% **INDEPENDENT**
9% **TECHNOLOGY**



This Education Master Facility Plan, Future Ready D36, is a comprehensive look at your schools. In addition to physical condition, size and other practical measures, DLR Group is qualifying the buildings relative to their ability to foster the progressive learning that Winnetka is renowned for today as well preparing for progressive 2.0 and the types of spatial diversity and plurality that will support student exploration and collaboration in the future. In this phase, we gathered data on how learning is happening through student shadowing and activity logging. The results are captured in this graph above.

TOP 5 TAKE-AWAYS

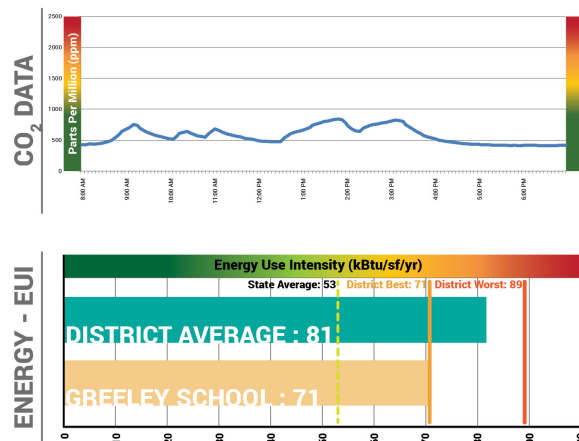
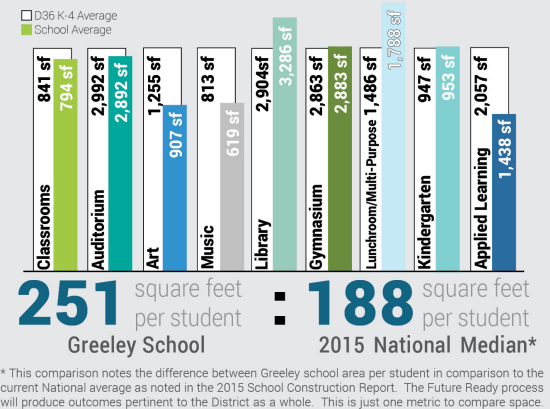
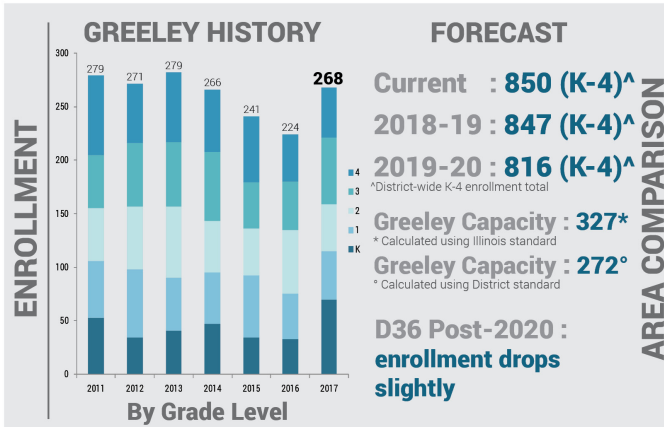
LISTENING TOUR

- No consistency in classroom equipment
- More equity amongst classroom sizes
- Lacking flexible furniture
- Benefits from natural light/greenery
- Better access to drinking water

An all staff meeting (Listening Tour) was held at each school where faculty gave input about the strengths and weaknesses of the building. Architects and Engineers assessed each building noting deficiencies in material finish and code compliance.

PHYSICAL CONDITION

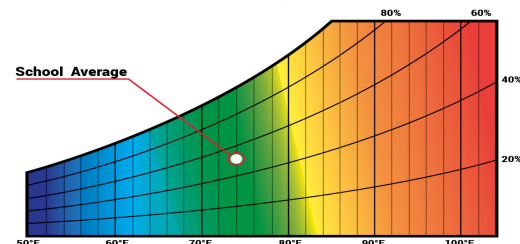
- Gym mechanical system at useful life
- Restrooms are not ADA accessible
- Additional exit required from gym
- Rooftop equipment is at useful life
- One classroom missing exhaust system



Did you know . . .

Greeley achieved the highest thermal comfort score - 90% satisfaction
Best ventilation levels in district - max CO₂ readings of 942 PPM
Classrooms are over-lit by artificial light

THERMAL COMFORT



Important note: The September week that was logged was unseasonably temperate (cooler) than in recent years or even as observed this past week with temperatures in the 90s. Wide fluctuation in interior temperatures and humidity was personally observed by our engineers. Thermal comfort issues were widely reported by faculty and staff as well. This is a significant issue and will need to be addressed.

How is this information collected?

The DLR Group team collected data through the use of environmental sensors, District energy bills, and logging equipment. The sensors were placed in several rooms where they logged data from one to seven days. Spot measurements and multiple devices were then used to validate the results.

VOCs



Acoustics



Condition (relative)

