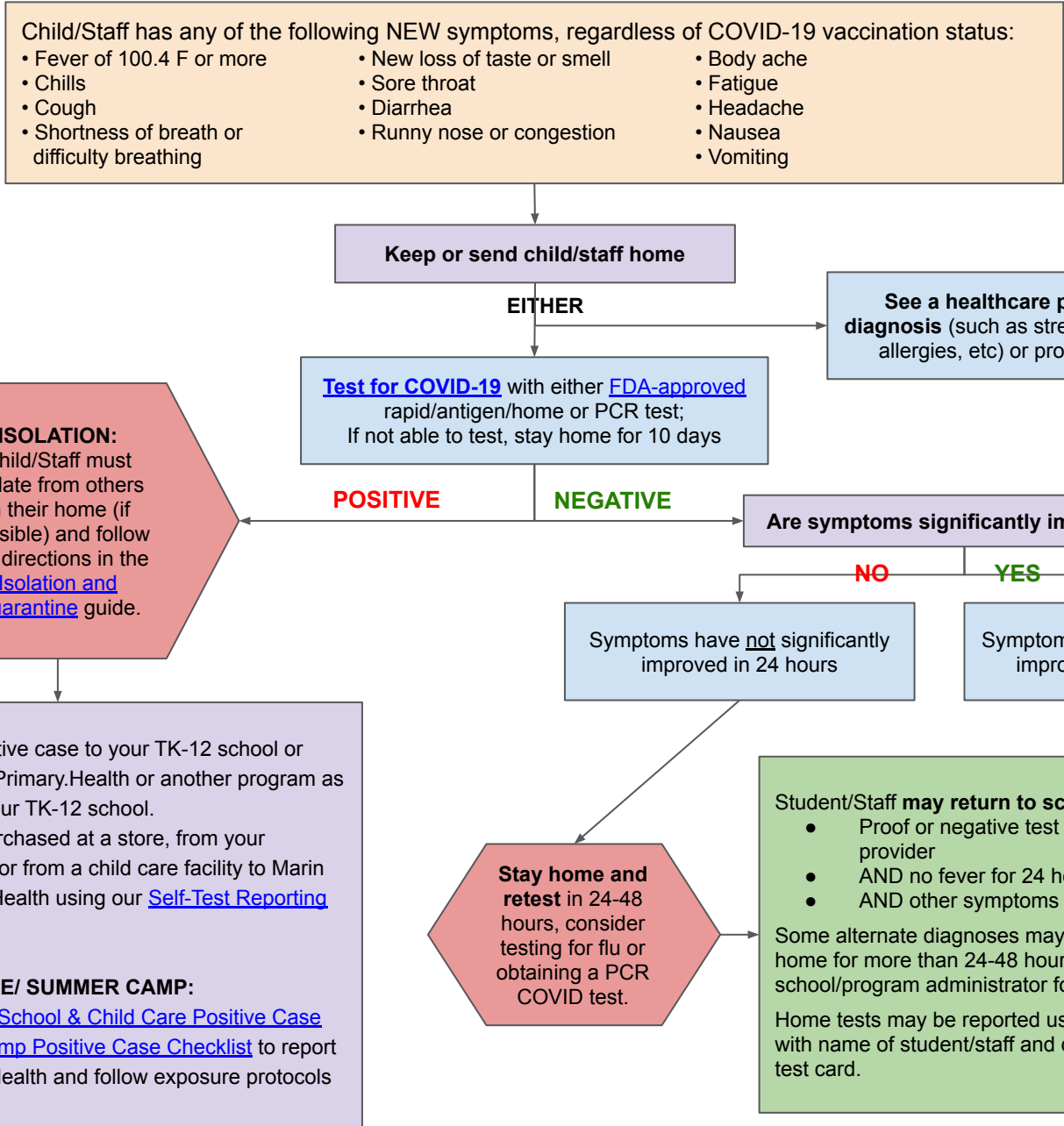


# COVID-19 Decision Tree for Child or Staff with Symptoms

For TK-12 Schools, Child Care Facilities, Youth Activities, and Summer Camps

Current as of 6/6/22



**FAMILIES:**

- 1) Report the positive case to your TK-12 school or program. Use Primary Health or another program as instructed by your TK-12 school.
- 2) Report tests purchased at a store, from your summer camp, or from a child care facility to Marin County Public Health using our [Self-Test Reporting Form](#).

**SCHOOLS/ CHILD CARE/ SUMMER CAMP:**  
Follow the steps in the [School & Child Care Positive Case Checklist](#) or [Summer Camp Positive Case Checklist](#) to report to Marin County Public Health and follow exposure protocols for your setting.

**Student/Staff may return to school/child care/camp with:**

- Proof or negative test -OR- note from health care provider
- AND no fever for 24 hours without medication
- AND other symptoms have significantly improved

Some alternate diagnoses may require students to stay home for more than 24-48 hours, see your schools' RN or school/program administrator for more information.

Home tests may be reported using a photo of the test card with name of student/staff and date of test taken written on test card.