



TIGER TALES



January 5, 2018

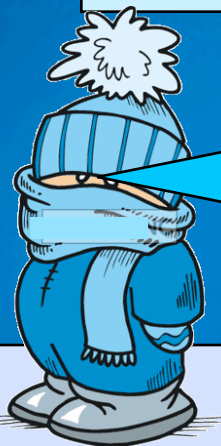
Reminder:
There is no school
on Monday,
January 15
(Martin Luther King
Day)

Study Support

Study support is available for grades 6, 7, & 8. This is a great opportunity to get extra help with classwork or homework, get caught up if you have missed school, or have a quiet place to work.

*Mondays through Fridays
8:00 - 8:30am

Any questions
contact Mrs. Freeman at
freemamd@rsu5.org



**Please make sure to
send in hats, mittens
and boots for your
children every day.**

Please make sure to write
your child's name on their
jackets, mittens,
sweatshirts, lunch boxes,
water bottles, etc. so that
we can return any items
that end up in lost
and found.

MIDDLE SCHOOL BASKETBALL

Friday, January 5

Boys A at Waynflete - 3:30pm
Boys B at Waynflete - 4:30pm
Girls A home vs. Waynflete - 4:00pm
Girls B home vs. Waynflete - 5:00pm

Tuesday, January 9

Boys A home vs. St. John's - 4:00pm
Girls A home vs. St. John's - 5:15pm

Wednesday, January 10

Boys A at OOB - 4:00pm
Boys B at OOB - 5:00pm
Girls A home vs. OOB - 4:00pm
Girls B home vs. OOB - 5:00pm

Tuesday, January 16

Girls A at Poland - 4:00pm
Girls B at Poland - 5:00pm
Boys A home vs. Poland - 4:00pm
Boys B home vs. Poland - 5:00pm

Upcoming Events

Spelling Bee

Students in grades 5-8 will be participating in their classroom Spelling Bees in the next couple of weeks and the winners will participate in our school Spelling Bee on January 18.

Geography Bee

The middle school geography bee will be held on January 18 at 3:30pm

Peaceful Bus: On the morning of January 10, we have a Peaceful Bus event planned for all students. Peaceful Bus is our ongoing initiative to promote a happy and safe climate on the school buses. There will be more information about Peaceful Bus in the January School Culture Newsletter.





Community Programs

Mt. Abram Sunday Ski Program



Register Online
rsu5cp.org

RSU5 Community Programs
Enriching Lives... Strengthening Community

17 West St.
Freeport, ME 04032
Phone: (207) 865-6171
www.rsu5cp.org

Chris Guerette
Recreation Coordinator
GueretteC@rsu5.org



Located just five miles outside of Bethel, this family friendly mountain offers an unpretentious, laid back experience that is great for both skiers and riders. Mt. Abram has a premiere "learn to ski/ride" area with its own Westside lift and lodge, but also offers intermediate and expert trails on the main mountain. With 5 lifts and 44 trails to choose from, Mt. Abram has something for skiers and riders of all abilities.

Participants must sign up for all six weeks of the program—there are no individual trip rates. Make-up dates due to inclement weather will be scheduled as needed. If you miss one or more days, you will be given a voucher to return one other date this season. This program is for grades 2 through 12.

Dates: Sundays, January 7 – February 11

	<i>Fee</i>	<i>Course #</i>
Lift Ticket Only	\$275	F17-169 L
Lift & Rental	\$425	F17-169 LR
Lift & Clinic	\$425	F17-169 LC
Lift, Clinic & Rental	\$575	F17-169 LCR
Transportation Only (No Lift Ticket)	\$115	F17-169 NA