

**NOTICE OF PUBLICATION OF SUMMARY OF REDISTRICTING PLAN FOR
RANKIN COUNTY SCHOOL DISTRICTS
PURSUANT TO 2020 DECENNIAL CENSUS**

Pursuant to Miss. Code Ann. §37-7-104 (1) (2012), the Rankin County Board of Education is required to reapportion the board of education districts after publication of the 2020 decennial census results and is required to publish the new district lines in a newspaper with general circulation in Rankin County for three consecutive weeks, after which the new district lines will be effective.

In accordance with an Official Attorney General's Opinion to McWilliams dated May 13, 2013, the Rankin County Board of Education is authorized to publish the order or portion of the order providing for the adoption of new districts, including a summary statement that the metes and bounds legal descriptions of the districts are on file for examination with the Circuit Clerk and Chancery Clerk and the offices of Dr. Scott Rimes, County Superintendent of Education at 1220 Apple Park Place, Brandon, Mississippi 39042 (601-825-5590) and are available and open for inspection by any citizen, and does hereby authorize and direct that the attached Order dated May 25, 2022 be published along with this Notice of Publication in a newspaper with general circulation in Rankin County at which time the new district lines will be effective.

A copy of said Order is attached as Exhibit A and incorporated by reference. The Rankin County Board of Education has now complied with the requirement to give notification to the Secretary of State of metes and bounds legal descriptions of the boundaries and to furnish the Secretary of State a map showing those changes. The above metes and bounds legal descriptions, a map depicting the revised boundaries, and all relevant demographic and statistical data have also been furnished to the Secretary of State, and the same are on file in the office of the Circuit Clerk of Rankin County and spread upon the minutes of the Rankin County Board of Education and are available and open for inspection by any citizen, by observation of the Rankin County School District or examination of map and legal descriptions in the lobby of the Rankin County School District Administration offices at 1220 Apple Park Place, Brandon, Mississippi or on file in the office of Dr. Scott Rimes, County Superintendent of Education at the same address. The Board directs that this Notice of Publication and Summary be published three times, upon the completion of which the new district lines shall be effective as law.

Dated this 20th day of July, 2022.

RANKIN COUNTY BOARD OF EDUCATION

The Board of Education of Rankin County School District ("Board") took up for consideration the matter of adopting new Trustee election districts based on the 2020 Census. After a discussion of the subject, Board member Mr. David Dyess offered and moved the adoption of the following Order:

ORDER ADOPTING REDISTRICTING OF TRUSTEE ELECTION DISTRICTS OF THE BOARD OF EDUCATION OF RANKIN COUNTY SCHOOL DISTRICT

WHEREAS, pursuant to Miss. Code Ann. § 37-7-103 (2015), the Board acting by and through its duly elected Trustees has full jurisdiction, power and authority, as any regular meeting thereof or at any special meeting called for that purpose, to change or alter the boundaries of any board of education district, and has decided to change or alter the boundaries of the five board of education districts in order to comply with applicable state and federal law, including the one person, one vote doctrine and requirement of the Equal Protection Clause of the Fourteenth Amendment of the United States Constitution;

WHEREAS, the data from the 2020 Census as provided to the Board indicated that the variances among the Trustee Election Districts were not within the acceptable norm of the one-person, one-vote doctrine of the Equal Protection Clause of the Fourteenth Amendment to the United States Constitution;

WHEREAS, the Board has utilized the services of **CENTRAL MISSISSIPPI PLANNING AND DEVELOPMENT DISTRICT** as consultants and has employed counsel to assist in the redistricting process, and a proposed redistricting plan has been prepared by CDPDD based on the redistricting criteria adopted by the Board to guide it in this process and to provide a constitutionally proper structure for a redistricting plan;

WHEREAS, the Board has worked closely with CMPDD to develop a plan for the redistricting of the Trustee Election Districts of RCSD, and has held public meetings and hearings on May 11, 202 and May 25, 2022 for the purpose of receiving public comment and input regarding the redistricting options, with maps presented for consideration by the Board having been placed on RCSD's Redistricting Website and also being made available to public viewing and comment on mapping options;

WHEREAS, the Board has left the public hearing record open until May 25, 2022, and the public comment period has now closed;

WHEREAS, the Board has received the public comments and has considered those comments; and

WHEREAS, the Board determines that the redistricting plan prepared by Central Mississippi Planning and Development District, as described and depicted in the attached Exhibit "A" to this Order, satisfies the adopted redistricting criteria, complies with the one person, one vote standard, and complies with all applicable state and federal laws, and should therefore be immediately adopted and become effective upon adoption by the Board, to allow ample time for the updating of voter information by the Circuit Clerk's

office and election commissioners and compliance with the publication requirements, as each described below.

IT IS, THEREFORE, ORDERED by the Board as follows:

1. The Board hereby finds and determines that the boundaries of the Trustee Election Districts of the Rankin County School District shall be and shall follow the new boundaries of the districts set forth in a map which accurately depicts the district boundaries, attached hereto and incorporated herein by reference as Exhibit "A".

2. The pertinent 2020 Census population variance and population by race statistics of the districts described in the above-referenced map are contained in the table on the map in Exhibit "A".

3. All incumbent Trustees and Board members shall continue to serve until their present terms of office have expired and their successors have been duly qualified, elected, and take office in the manner provided by law.

4. The authorized officials, including Election Commissioners of the County, the Registrar and other authorized officials, shall proceed to revise the registration books and poll books of Rankin County in such a manner as is necessary to change the registration books of the Trustee Election Districts to be so changed as to conform to the change in the boundaries of districts and to notify those persons affected by such changes by United States Mail, postage pre-paid, of their reassignment as soon as practicable when accomplished.

5. This Order shall take effect and be in force immediately and shall be in force and supersede any prior orders of the Board regulating the same, said plan to be forwarded to the Secretary of State of the State of Mississippi, in addition to the Rankin County Election Commission and the Registrar for Rankin County for implementation.

6. The Board shall proceed forthwith to publish a summary of this Order with Exhibit A attached, once each week for three (3) consecutive weeks in a weekly newspaper having a general circulation in Rankin County, and a copy of this Order, including the full exhibits depicting the changes in Trustee Election District boundaries; and further, the legal descriptions of such boundary changes upon completion will be on file for inspection by the public in the Board's office during normal business hours.

Board member Mrs. Kym Jamison seconded the motion to adopt the foregoing Order and the question being put to a roll call vote, the result was as follows:

Ruth Burgess, Trustee	Voted: AYE
David Dyess, Vice-President	Voted: AYE
Grumpy Farmer, President	Voted: AYE
Kym Jamison, Secretary	Voted: AYE
Katherine(Liza) McKinion, Trustee	Voted: AYE

The motion having received the affirmative vote of the members present, the President of the BOARD OF EDUCATION OF THE RANKIN COUNTY SCHOOL DISTRICT declared the motion carried and the order adopted, this the 25 day of May, 2022.



Grumpy Farmer, President
Board of Education, Rankin County School
District

ATTEST:



Kym Jamison, Secretary and Trustee
Board of Education, Rankin County School District

Danville County School Board Districts Plan 1 (April 3, 2022)

District	Population	Ideal Population*	Deviation	Percent Deviation	White	Percent White	Black	Percent Black	Other Races	Percent Other	VAP**	White VAP	Percent White Vap	Black VAP	Percent Black VAP	Other VAP	Percent Other VAP
School Board District 1	26,159	26,284	-80	-0.34%	19,217	73.36%	4,940	18.86%	2,007	7.78%	19,563	14,711	75.10%	3,576	18.26%	1,276	6.52%
School Board District 2	26,885	26,284	-399	-1.49%	17,264	63.89%	7,121	27.51%	1,500	5.79%	19,364	13,220	68.77%	5,430	27.01%	914	4.72%
School Board District 3	26,745	26,284	461	1.73%	19,615	73.34%	4,690	17.54%	2,440	9.12%	21,137	15,982	75.43%	3,508	16.59%	1,702	8.03%
School Board District 4	26,350	26,284	-66	-0.25%	20,593	78.15%	3,788	14.38%	1,969	7.47%	20,085	16,110	80.71%	2,827	13.06%	1,348	6.71%
School Board District 5	26,248	26,284	-36	-0.14%	20,577	78.39%	4,305	16.74%	1,276	4.86%	19,801	15,611	78.64%	3,370	17.01%	811	4.15%

*Top-to-Bottom Variance (Percent Deviation Difference) cannot exceed 10%. Top-to-Bottom Variance is 3.27% (1.75% + 1.52%) = 3.27%.

**Total County Population: 131,422 (Divided by 5 School Board Districts = Ideal Population).

**VAP = Voting (18+) Age Population

Rankin County School Board

Proposed School Board Districts

May 11, 2022

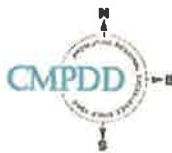
District	Population	Ideal Population*	Deviation	Percent Deviation	VAP**
School Board District 1	26,194	26,284	-90	-0.34%	19,563
School Board District 2	25,885	26,284	-399	-1.52%	19,364
School Board District 3	26,745	26,284	461	1.78%	21,192
School Board District 4	26,350	26,284	66	0.25%	20,085
School Board District 5	26,248	26,284	-36	-0.14%	19,802

Top-to-Bottom Variance is 3.27% (1.75% + 1.52% = 3.27%).

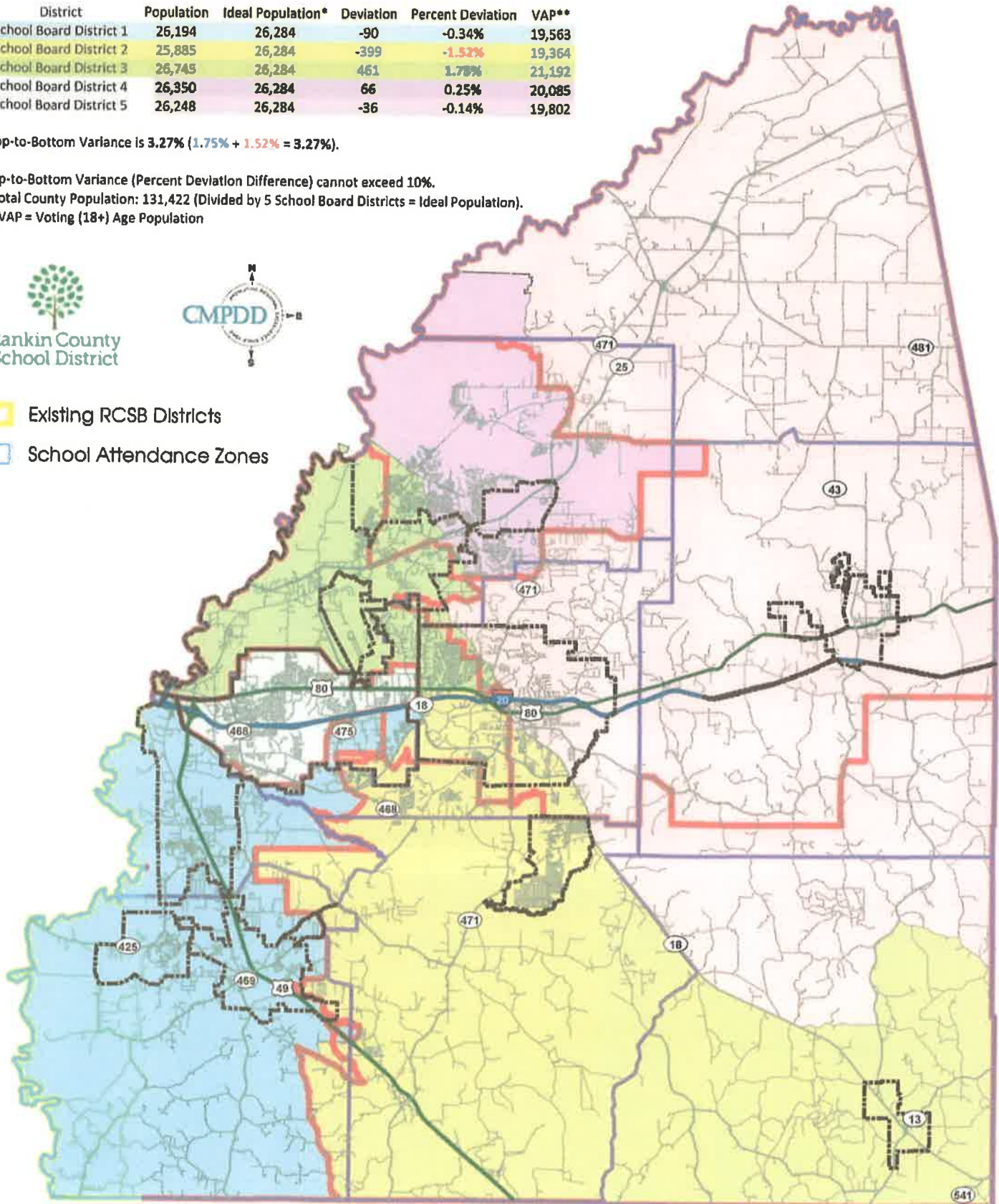
Top-to-Bottom Variance (Percent Deviation Difference) cannot exceed 10%.

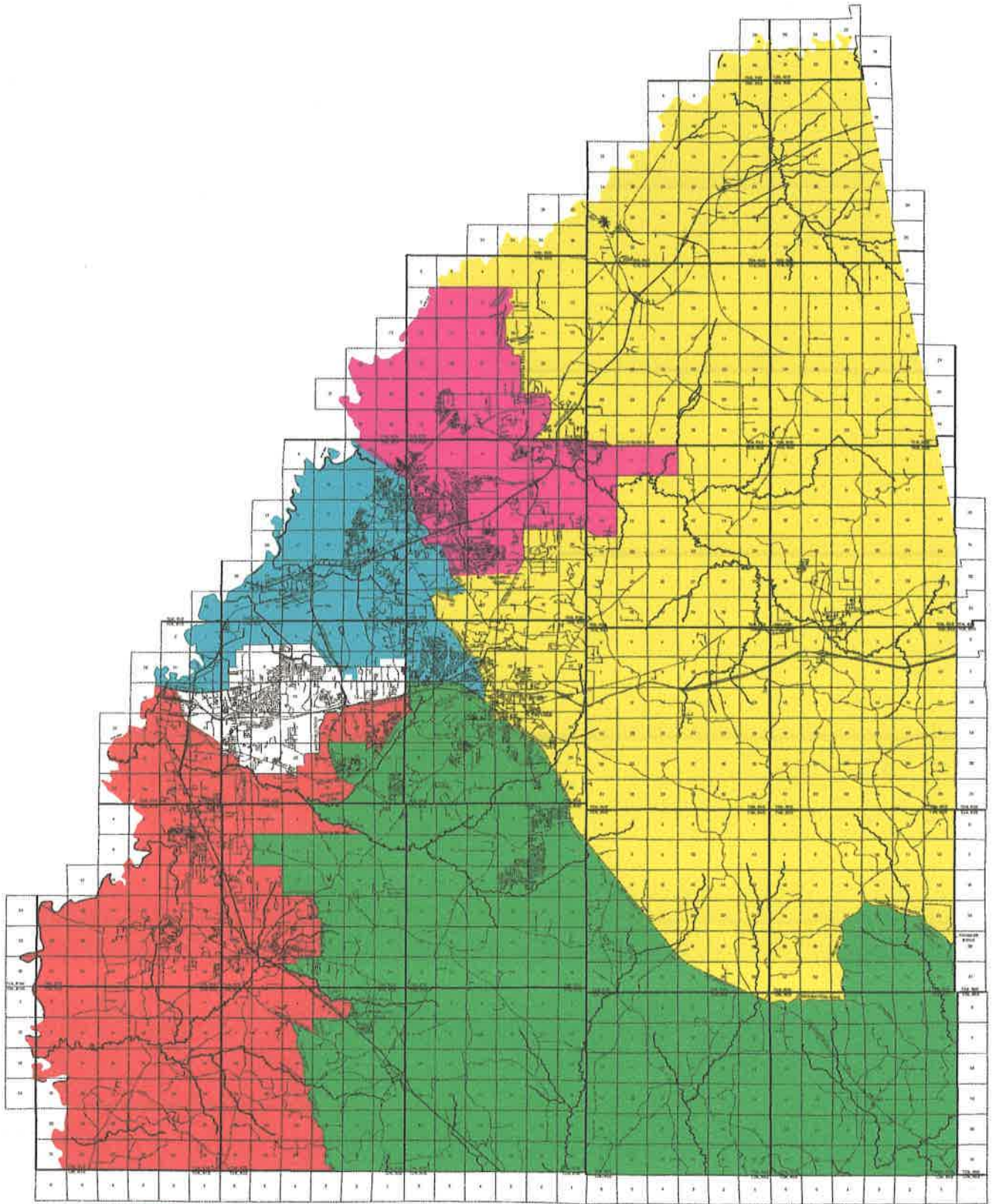
*Total County Population: 131,422 (Divided by 5 School Board Districts = Ideal Population).

**VAP = Voting (18+) Age Population



-  Existing RCSB Districts
-  School Attendance Zones





DISTRICT 1 DISTRICT 2 DISTRICT 3 DISTRICT 4 DISTRICT 5