

Checklist for Test-Out Materials

Course Name: ALGEBRA 1

Circle Semester: Semester A Semester B

Materials Needed:

- Book(s)
- Necessary Assignments/Projects/Presentations/Etc.
- Assessment Rubrics (if applicable)
- Semester Exam Review
- Final Semester Assessment

Course Specifics

Book(s) Names: HOLT ALGEBRA 1 - Online  
http://my.hrw.com (username: cmath47)  
password: s5e2b

List of assignments, projects, presentations, etc. students need to complete prior to testing. Please be very specific when listing assignments so students and parents know exactly what the expectations are:

CHAPTERS 1- 6

Specific suggestions for students to prepare for this assessment:

**DO THE EXAM REVIEW, USE THE BOOK FOR NEEDED INSTRUCTION AND EXAMPLES**

Describe expectations for final semester assessment:

**78 % CORRECT**

Other recommendations or information:

Office Use Only

Date of Test-Out: \_\_\_\_\_

Student Name: \_\_\_\_\_

Credit Granted: Yes: \_\_\_\_\_ No: \_\_\_\_\_

Teacher Name: \_\_\_\_\_

Counselor: \_\_\_\_\_

Checklist for Test-Out Materials

Course Name: \_\_\_\_\_

Circle Semester:                      Semester A                      Semester B

Materials Needed:

- \_\_\_\_ Book(s)
- \_\_\_\_ Necessary Assignments/Projects/Presentations/Etc.
- \_\_\_\_ Assessment Rubrics (if applicable)
- \_\_\_\_ Semester Exam Review
- \_\_\_\_ Final Semester Assessment

Course Specifics

Book(s) Names:

---

---

List of assignments, projects, presentations, etc. students need to complete prior to testing. Please be very specific when listing assignments so students and parents know exactly what the expectations are:

---

---

---

---

Specific suggestions for students to prepare for this assessment:

---

---

---

---

Describe expectations for final semester assessment:

---

---

---

Other recommendations or information:

---

---

---

Office Use Only

Date of Test-Out: \_\_\_\_\_

Student Name: \_\_\_\_\_

Credit Granted: Yes: \_\_\_\_\_ No: \_\_\_\_\_

Teacher Name: \_\_\_\_\_

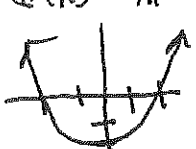
Counselor: \_\_\_\_\_

# 1st Semester Review

- ①  $x+5$   
 ②  $\frac{x}{5}$   
 ③  $5-x$   
 ④  $5x$
- } write in words
- ⑤ Evaluate  $a+b$  if  $a=-6$  &  $b=-4$   
 ⑥ Evaluate  $a-b$  if  $a=4$  &  $b=-6$   
 ⑦  $6-8$   
 ⑧  $-6-4$   
 ⑨  $-8+4$   
 ⑩  $6+(-4)$   
 ⑪  $10-(-10)$   
 ⑫  $-5(4)$   
 ⑬  $5(-4)$   
 ⑭  $(-5)(-4)$   
 ⑮  $(-2)(-5)(-3)$   
 ⑯  $(-5)(-4)(3)(0)$   
 ⑰  $(\frac{6}{5})(4)(\frac{10}{8})(\frac{1}{3})$   
 ⑱  $(-5)(2)(2)(-5)$   
 ⑲  $-\frac{6}{3}$   
 ⑳  $-8 \div (-2)$   
 ㉑  $-\frac{3}{4} \div \frac{2}{3}$   
 ㉒  $1\frac{1}{2} \div 2\frac{1}{4}$   
 ㉓  $0/6$   
 ㉔  $6/0$   
 ㉕  $\frac{2/3}{2}$   
 ㉖  $\sqrt{16}$   
 ㉗  $-\sqrt{25}$   
 ㉘  $3^2$   
 ㉙  $(-5)^2$
- ③⑩  $-5^2$   
 ③①  $(\frac{3}{5})^2$   
 ③②  $4+4 \cdot 4+4$   
 ③③  $6+6 \div 6+6 \cdot 6+6$   
 ③④  $6+|-6-6|$   
 ③⑤  $3(x+2)=3x+6$  name the property  
 ③⑥  $6+8=8+6$  "  
 ③⑦  $2(3 \cdot 4) = (2 \cdot 3)(4)$  "  
 ③⑧  $6x+4+x+6$  simplify  
 ③⑨  $2(3x-4)+3(x+2)$  simplify  
 ④⑩  $6x+6-(2x-4)$  simplify  
 ④①  $\frac{2}{5}(15x+20)+\frac{2}{7}(14x+21)$   
 ④②  $\frac{2}{3}(2x+5)+\frac{3}{5}(3x+4)$   
 ④③ Graph  $(3, -2)$   
 ④④  $(-3, -2)$  in which quadrant lie? does it  
 which coordinate works? works  
 ④⑤  $y=3x-1$  A)  $(4, 12)$  B)  $(6, 17)$   
 ④⑥  $x-4=10$   
 ④⑦  $4=x+10$   
 ④⑧  $x+\frac{3}{5}=3$   
 ④⑨  $5x=15$   
 ⑤⑩  $\frac{x}{5}=4$   
 ⑤①  $20=-4x$   
 ⑤②  $5y=0$   
 ⑤③  $\frac{x}{-2}=5$   
 ⑤④  $5x-8=12$   
 ⑤⑤  $4-6y=16$   
 ⑤⑥  $\frac{x}{4}+6=10$   
 ⑤⑦  $8x+4=6x+10$   
 ⑤⑧  $4x-6=8x+2$



- 59  $3(x+5) = 3x+10$
- 60  $\frac{5}{6}x - \frac{5}{12} = \frac{2}{3}x + \frac{3}{4}$
- 61  $2(x+3) + 2 = -3(x-2) + 10$
- 62  $\frac{3}{4} = \frac{x}{8}$
- 63  $\frac{x+3}{2} = \frac{x-3}{3}$
- 64  $ab - c = d$  solve for a
- 65 if a 6' person casts a 10' shadow, how tall is a tree with a 75' shadow?
- 66 Find 60% of 80
- 67 40% of what is 12
- 68 18 is ~~10~~ what % of 24
- 69 Price went from \$60 to \$90. Find % of increase
- 70 Price \$850. Find tax
- 71 Price \$350. Find price after tax
- 72 Price 600, 30% discount, Find discount
- 73 Price \$550. 20% discount Find <sup>Final</sup> price after
- 74 You make \$50,000 plus 5% commission. If you sold \$200,000 worth, what is your salary?
- 5  $|x-4| = 10$
- 6  $x-5 < 10$  solve & Graph
- 7  $10 < x+4$  solve & Graph
- 8  $-2x \leq 10$  solve & Graph
- 9  $6x-4 \geq 4x+6$  solve
- 10  $2(3x+2) > 6x+6$
- 11  $\leftarrow \begin{matrix} \bullet \\ 5 \end{matrix} \bullet \rightarrow \begin{matrix} \bullet \\ 10 \end{matrix}$  State Solution.
- 12  $\leftarrow \begin{matrix} \bullet \\ 2 \end{matrix} \bullet \rightarrow \begin{matrix} \bullet \\ 6 \end{matrix}$  State Solution
- 13  $x+2 < 10$  &  $x-1 > 3$  solve
- 14  $|x-4| > 6$
- 15  $\{ (1,3), (3,-2), (-2,4), (0,3) \}$
- 16 if  $f(x) = 4x-2$  Find  $f(3)$

- 87  $g(x) = 4x-2$  Find inverse
- 88  state domain, range, is it a function
- 89 A painter charges \$50 plus \$30 per hour. write an equation.
- 90 Graph  $y = x^2 - 2$
- 91  $g(x) = 3x^2 + 2x - 3$  Find  $f(3)$
- 92  $y = 3x + 4$  put in S.F.
- 93  $y = -\frac{2}{3}x - 2$  put in S.F.
- 94  $(4,2)(8,4)$  Find Slope
- 95  $(-3,5)(6,-4)$  Find Slope
- 96  $5x + 2y = 10$  put in slope intercept
- 97 write equation of line with  $m=2, b=4$
- 98 write eq of line thru  $(-1,2)$   $m=4$  in S.F.
- 99 write equation of line thru  $(0,4)(3,5)$
- 100  $2x + 5y = 10$  Find x & y intercept
- 101  $2x + 3y = 6$  Graph
- 102  $y = -\frac{2}{3}x + 2$  Graph
- 103 Graph line thru  $(1,2)$   $m=-2$
- 104 write eq of line thru  $(3,5)$  that is parallel to  $y = 4x + 1$
- 105 write eq of line thru  $(0,2)$  that is  $\perp$  to  $2x + 3y = 6$
- 106 Graph  $y = |x-2| + 1$
- 107 Graph a line thru  $(3,2)$  with no slope.
- 108 State Domain, Range, is it a function?  
Graph  $y = 23$



(109) Solve by Graphing  $3x - y = 7$   
 $2x + y = 3$

(110)  $3x + 2y = 6$  } Solve  
 $y = 2x - 4$

(111)  $y = 5x - 2$  } Solve  
 $y = 2x + 4$

(112)  $2x + y = 6$  } Solve  
 $3x + y = 10$

(113)  $2x + 3y = 4$  } Solve  
 $4x - 2y = 8$

(114)  $5x + 2y = 10$  } Solve  
 $2x + 3y = 6$

(115)  $3y + 4x > 12$  Graph

(116)  $2x - 5y \leq 15$  Graph

(117)  $y \geq -\frac{2}{3}x + 4$  } Solve  
 $2x - 3y \leq 6$

(118)  $y < 4$  } Solve by Graphing  
 $y > x$   
 $x \geq -2$

(119) MA's Bakery sells Apple pies for \$5 and cherry pies for \$7. She sold a total of 35 pies yesterday and made \$215. How many Apple pies did she sell?





# 1st sem rev answers

Desk

- ①  $x+5$
  - ②  $\frac{x}{5}$
  - ③  $5-x$
  - ④  $5x$
- The sum of a # & 5  
 The Quotient of a # & 5  
 write in words  
 The difference of 5 & a #  
 The Product of 5 & a #

- ③①  $-5^2$  (25)
- ③①  $(3/5)^2$  (9/25)
- ③②  $4+4+4+4$  (24)
- ③③  $6+6+6+6+6$  (49)

- ⑤ Evaluate  $a+b$  if  $a=-6$  &  $b=-4$  (-10)
- ⑥ Evaluate  $a-b$  if  $a=4$  &  $b=-6$  (10)
- ⑦  $6-8$  (-2)

- ③④  $6+|-6-6|$  (18)
- ③⑤  $3(x+2)=3x+6$  (Distributive property)
- ③⑥  $6+8=8+6$  (Commutative)
- ③⑦  $2(3 \cdot 4)=(2 \cdot 3)(4)$  (Associative)

- ⑧  $-6-4$  (-10)
- ⑨  $-8+4$  (-4)
- ⑩  $6+(-4)$  (2)
- ⑪  $10-(-10)$  (20)

- ③⑧  $6x+4+x+6$  (Simplify)  $7x+10$
- ③⑨  $2(3x-4)+3(x+2)$  (Simplify)  $4x-2$
- ④⑩  $6x+6-(2x-4)$  (Simplify)  $4x+10$

- ⑫  $-5(4)$  (-20)
- ⑬  $5(-4)$  (-20)
- ⑭  $(-5)(-4)$  (20)

- ④⑪  $2/5(15x+20)+1/7(14x+21)$  (Simplify)  $10x+14$
- ④⑫  $2/3(2x+5)+3/5(3x+4)$  (Simplify)  $47/15x + 86/15$

- ⑮  $(-2)(-5)(-3)$  (-30)
- ⑯  $(-5)(-4)(3)(0)$  (0)
- ⑰  $(\frac{1}{5})(4)(\frac{10}{3})(\frac{1}{2})$  (2)

- ④⑬ Graph  $(3, -2)$  (Graph)
- ④⑭  $(-3, -2)$  in which quadrant lie? (III) (Which coordinate works)
- ④⑮  $y=3x-1$  (A)  $(4, 12)$  (B)  $(6, 17)$

- ⑱  $(-5)(2)(2)(-5)$  (100)
- ⑲  $-6/3$  (-2)
- ⑳  $-8 \div (-2)$  (4)

- ④⑯  $x-4=10$  (14)
- ④⑰  $4=x+10$  (-6)
- ④⑱  $x+3/5=3$  ( $2\frac{2}{5}$  or  $1\frac{2}{5}$ )

- ㉑  $-3/4 \div 2/3$  ( $9/8$ )
- ㉒  $1\frac{1}{2} \div 2\frac{1}{4}$  ( $3/2$ )
- ㉓  $0/6$  (0)

- ④⑲  $5x=15$  (3)
- ④⑳  $\frac{x}{5}=4$  (20)
- ④㉑  $20=-4x$  (-5)

- ㉔  $1/3$  (Indefinite)
- ㉕  $2/3$  ( $1/2$ )
- ㉖  $\sqrt{16}$  (4)

- ④㉒  $5y=0$  (0)
- ④㉓  $\frac{x}{2}=5$  (-10)
- ④㉔  $5x-8=12$  (4)

- ㉗  $-\sqrt{25}$  (-5)
- ㉘  $3^2$  (9)
- ㉙  $(-5)^2$  (25)

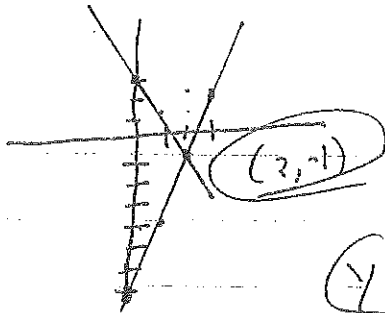
- ④㉕  $4-6y=16$  (-2)
- ④㉖  $4+6=10$  (16)
- ④㉗  $8x+4=6x+10$  (3)

- ④㉚  $(-5)^2$  (25)

- ④㉘  $4x-6=8x+2$  (-2)

- 59  $3(x+5) = 3x+10$  (0)
- 60  $5/16x - 5/12 = 2/3x + 3/4$   $10x-5=8x+9$  (7)
- 61  $2(x+3)+2 = -3(x-2)+10$  (87)  $f(x)=4x-2$  Find inverse  $y=4x-2 \ x=4y-2$  all real #s
- 62  $3/4 = x/8$  (6)  $2x+6+2 = -3x+6+10 \ 5x=8$  (85) State domain, Range, is it a function? Yes
- 63  $x+3 = x-3$   $3x+9=2x-6$  (-15) (89) A painter charges \$50 plus \$30 per hour. write an Equation.  $y=50+30x$
- 64  $a-b-c=0$  solve for a  $a = \frac{b+c}{2}$  (45)
- 65 if a 6' person casts a 10' shadow, how tall is a tree with a 75' shadow? (90) Graph  $y=x^2-2$
- 66 Find 60% of 80 (48) (91)  $g(x)=3x^2+2x-3$  Find  $g(3)$  (30)
- 67 40% of what is 12  $40x=120$  (30) (92)  $y=3x+4$  put in S.F.  $3x-y=-4$   $2x+3y=-6$
- 68 18 is what % of 24  $3/4 \cdot 24 = x/100$  (75) (93)  $y=-2/3x-2$  put in S.F.
- 69 Price went from \$60 to \$90. Find % of increase (50%) (94) (4,2) (8,4) Find Slope
- 70 Price \$850. Find tax (51) (95) (-3,5) (6,-4) Slope  $y=-5/2x+5$  put in
- 71 Price \$350. Find price after tax (371) (96)  $45x+2y=10$  slope intercept  $y=2x+4$  or  $2x-y=-4$
- 72 Price 600, 30% discount, Find discount (18) line with  $m=2, b=4$  (97) write Equation
- 73 Price \$550. 20% discount. Find price after (440) (98) write eq of line
- 74 You make \$50,000 plus 5% commission. If you Then (-1,2)  $m=4$  Sold \$200,000 worth, what is your salary?  $y-2=4(x+1)$   $y=4x+6$  or  $4x-y=-6$
- 75  $|x-4|=10$   $x-4=10$   $x-4=-10$  (14, -6) (99) write Equation of line  $y=1/3x+4$  or  $x-3y=-12$
- 76  $x-5 < 10$  solve & Graph  $x < 15$  Line Then (0,4) (3,5)
- 77  $10 < x+4$  solve & Graph  $x > 6$  (100)  $2x+5y=10$  Find  $x$  &  $y$  intercepts (5,0), (0,2)
- 78  $-2x \leq 10$  solve & Graph  $x \geq -5$  (101)  $2x+3y=6$  Graph
- 79  $6x-4 \geq 4x+6$  solve  $x \geq 5$  (102)  $y=-2/3x+2$  Graph
- 80  $2(3x+2) > 6x+6$  (0) (103) Graph line Then (1,2)  $m=-2$
- 81  $|x-4| < 10$  State Solution  $-5 < x < 15$  (104) write eq of line Then (3,5) that is parallel to  $y=4x+6$
- 82  $|x-4| > 10$  State Solution  $x \leq -2$  or  $x \geq 14$  (105) write eq of line Then (0,2) that is L to  $2x+3y=6$   $3x=-2y+6$   $y=-3/2x+2$
- 83  $x+2 < 10$  &  $x-1 > 3$  solve  $4 < x < 10$  (106) Graph  $y=|x-2|+1$
- 84  $|x-4| > 6$   $x-4 > 6$  or  $x-4 < -6$   $x > 10$  or  $x < -2$  (107) Graph a line Then (3,2) with No Slope.
- 85  $\{(1,3), (3,-2), (-2,4), (0,3)\}$  State Domain, Range, is it a function? Yes
- 86 if  $f(x)=4x-2$  Find  $f(3)$  (108) Graph  $y \geq 3$

109  $y = -3x + 7$   $y = 3x - 7$   
 $2x + y = 3$   $y = -2x + 3$



110  $3x + 2(2x - 4) = 6$   
 $3x + 4x - 8 = 6$   
 $7x = 14$   
 $x = 2$

(2, 4)

111  $5x - 2 = 2x + 4$   
 $3x = 6$   
 $x = 2$

(2, 8)

112  $-2x + 5y = 6$   
 $3x + y = 10$   
 $x = 4$

(4, -2)

113  $4x + 6y = 8$   
 $12x - 6y = 24$   
 $16x = 32$   
 $x = 2$

(2, 0)

114  $15x + 6y = 30$   
 $-4x - 6y = -12$   
 $11x = 18$   
 $x = \frac{18}{11}$

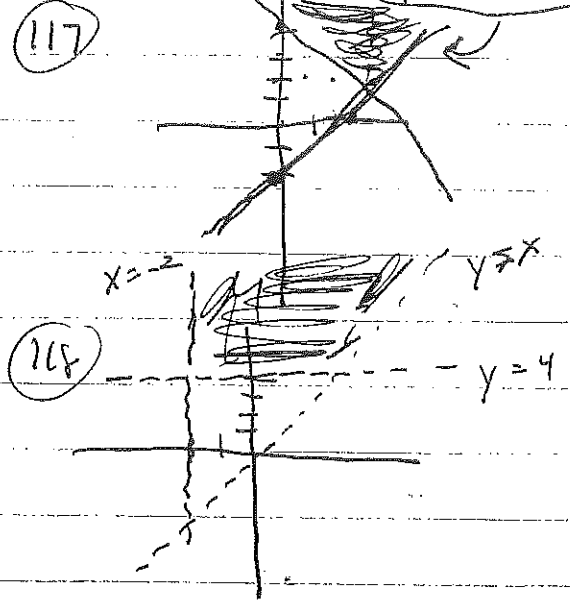
(18/11, 10/11)

115  $y > -4/3x + 4$

$2(\frac{18}{11}) + 3y = 6$   
 $\frac{36}{11} + 3y = 6$   
 $36 + 33y = 66$   
 $33y = 30$   
 $y = \frac{30}{33} = \frac{10}{11}$

117  $y \geq -2/3x + 4$

$2x - 3y \leq 6$   
 $-3y \leq -2x + 6$   
 $y \geq 2/3x - 2$



118  $x = \# \text{ of Apple pies}$   
 $y = \# \text{ of cherry pies}$   
 $x + y = 35$   
 $5x + 7y = 215$   
 $5x + 5y = 175$   
 $5x + 7y = 215$   
 $2y = 40$   
 $y = 20$   
 $x = 15$

119  $2x - 5y \leq 15$   
 $-5y \leq -2x + 15$   
 $y \geq 2/5x - 3$

