



# DESIGN & CONSTRUCTION UPDATE

April 2020

See Next Page for:

## DESIGN IS COMPLETE FOR THE NEW SCHOOL

During this challenging time, MGSD remains focused on our core mission of delivering instruction to our students. At the same time, we are celebrating other milestones like the completion of the design phase of our new elementary school.

As we unveil the finished design, we thank all those involved in the project, including members of the Facilities Advisory Committee, staff, and of course our residents. A special thanks goes to staff who helped guide the design process. With their input and guidance, our new school is more than just walls and a roof – it is a tool that helps support the district's instructional goals.

We are particularly excited about the collaboration spaces in our new school. These areas are adjacent to classrooms and support independent reading, team group work, study with instructional specialists and small group instruction. Collaboration spaces are also great places for multiple classrooms to combine for a guest speaker or team-taught lesson.

Each of the school's three grade wings will include these collaboration spaces in addition to a "flex café" that can be used as a flexible instructional space when not being used as a cafeteria.

- Construction Progress
- Drone image of new school site
- New principal announcement

## CONCEPTUAL RENDERINGS OF THE NEW SCHOOL



*Renderings provided by EUA. Furniture and interior finishes may vary from what is depicted.*

MORE INFO

[mononagrove.org](http://mononagrove.org)

Other information is available online



# DESIGN & CONSTRUCTION UPDATE

April 2020

## Important Dates

### RENOVATIONS

Design Complete!

Construction  
May 2019 - Aug. 2021

### NEW ELEMENTARY SCHOOL

Design Complete!

Construction  
Apr. 2020 - Aug. 2021

Opens  
FALL 2021

## Project Partners



## MORE INFO

[mononagrove.org](http://mononagrove.org)

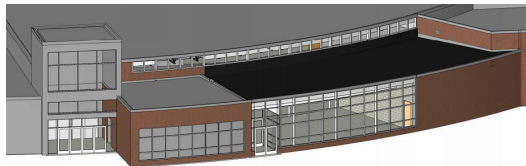
Other information  
is available online

## CONSTRUCTION PREP WORK IS STARTING DISTRICT-WIDE

- **New School:** Prior to any construction work starting, the District allowed the Village of Cottage Grove Fire Department to conduct training at the house that was going to be removed from district-owned land. Early signs of site preparation and grading are visible now and concrete foundations will start in May.
- **Winnequah School:** Construction crews are starting to replace ductwork in select rooms as they prepare to install mechanical units on the roof.
- **Taylor Prairie School:** The chiller has been replaced and is now operational.
- **Glacial Drumlin School:** In May, excavation for the addition will begin.



Top: drone image of new school site  
Bottom: rendering of GDS addition



## HOW DOES COVID-19 IMPACT CONSTRUCTION

At this time, the state of Wisconsin has instructed that construction services are Essential Businesses and permitted to continue operations during the Safer At Home Order. Findorff, the District's Construction Manager, prioritizes the health and safety of employees, clients, partners and communities, and they are following guidelines provided by the Centers for Disease Control and Wisconsin Department of Health Services while progressing the projects.

## PRINCIPAL ANNOUNCED FOR THE NEW SCHOOL



Mr. Reed Foster

We're pleased to officially announce that Reed Foster will be the principal of the new elementary school. Mr. Foster has been with the Monona Grove School District for 21 years, spending fifteen years as a teacher at Winnequah (including during the merger of Winnequah and Maywood), and CGS, then a year as Dean of Students at GDS, and for the last five years as principal at CGS. Mr. Foster has also served as a softball, baseball, and football coach for MG. Mr. Foster has served as the administrative liaison during this process since November 2018, from the visionary team to the core planning team.