



DESIGN & CONSTRUCTION UPDATE

February 2020

Important Dates

RENOVATIONS

Design

Nov. 2018 - Spring 2020

Construction

Jun. 2019 - Aug. 2021

NEW ELEMENTARY SCHOOL

Design

Nov. 2018 - Oct. 2019

Construction

Apr. 2020 - Aug. 2021

Opens

FALL 2021

Coming Soon

Groundbreaking for new school!

Spring 2020

Watch for details very soon!

Project Partners

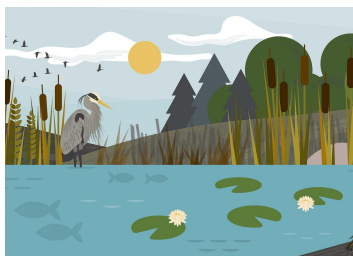

mononagrove.org

Other information
is available online

INTERIOR DESIGN CONCEPTS DEVELOPED

Our team has been developing and refining our new elementary school's interior design concept. The interior is designed around the theme HABITAT, reinforcing the idea that a school should be an inviting, homey place where students feel safe. Building upon that theme, the elementary school's three grade wings have materials and colors that reflect three of the natural habitats found in the area: **Woodlands**, **Wetlands** and **Grasslands**. Our students will be greeted each day with welcoming images of animals in their natural environments.

We are excited to reveal more progress in our next Design and Construction Update. Watch for the next edition, which will include renderings of the interior and exterior of the new elementary school.



Preview of imagery that will be on the walls of the new school

WHAT WILL THE NEW SCHOOL BE NAMED?

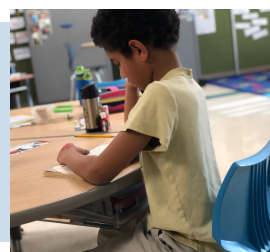
As we move into this next phase of our project, there are many exciting milestones ahead of us! One of those is naming the new elementary school. At their December meeting, the Monona Grove School Board approved an ad hoc committee to consider the names of district facilities. We actively sought members who are invested in the district, reliable, offer a new perspective, are open-minded and fair. This committee will be made up of board members, teachers, staff, and community members.

The board has charged this committee "to engage stakeholders and make an advisory recommendation to the School Board for the naming of district facilities, including the new elementary school." The committee will come up with the process to engage stakeholders, analyze feedback, and come up with a recommendation for the school board.

The committee had its first meeting in January and will continue to meet at least monthly through July. This should be a really fun experience and an exciting, unifying project for our community, and we all look forward to the input the community will provide!

FURNITURE PILOT IN PROGRESS

Scroll down to **PAGE 2** to read more about how students and teachers are testing out potential new furniture!





DESIGN & CONSTRUCTION UPDATE

February 2019

Important Dates

RENOVATIONS

Design

Nov. 2018 - Spring 2020

Construction

Jun. 2019 - Aug. 2021

NEW ELEMENTARY SCHOOL

Design

Nov. 2018 - Oct. 2019

Construction

Apr. 2020 - Aug. 2021

Opens

FALL 2021

Coming Soon

Groundbreaking for new school!

Spring 2020

Watch for details very soon!

Project Partners



Findorff

mononagrove.org

Other information
is available online

FURNITURE PILOT UNDERWAY

Furniture can have a huge impact on the way we live and work, and it's no different for our students.

- Today's learning environments encourage student collaboration and teamwork.
- Furniture that is bulky and difficult to move--like the desks and chairs you may remember from your own school years--can hinder reconfiguration of the classroom to facilitate student collaboration.
- Lightweight furniture that can roll or move easily allows students and teachers to rearrange the learning environments easily and often.
- Providing students and staff with a wide variety of options on how to use their classroom space encourages multiple forms of teaching and learning activities.
- While flexibility is important, durability and longevity of furniture is also a top priority. Our furniture gets a lot of use so we want to make sure we are investing in a comfortable yet sturdy product that will stand up over time.

The need to buy new furniture provides an excellent opportunity for our students. Students in three classrooms spanning grades 3-5 returned from winter break with new pieces, and each classroom has different styles to try. The teachers piloting the furniture have invited other staff to visit their classrooms to take a look and even to try the furniture themselves. There are also plans for teachers to do a half-day swap of classrooms so that a wide variety of students can try out different styles of furniture.

So far, teachers and students are giving very positive reviews.



WHAT'S NEXT

We will be breaking ground on the new school this spring. The first couple of months will include demolition, layout, sitework, grading, and excavation. The first sign of the concrete foundation work should be in early May.