

EXECUTIVE SUMMARY REPORT

MONONA GROVE SCHOOL DISTRICT

BUILDING TOGETHER. FORWARD TOGETHER.



Granite Ridge Elementary School 3.5.2021

The Past Week:

- Brick has begun on the Gym.
- Light fixtures were placed in the main entrance soffit.
- Metal Panels are being install in Area A.
- Tile install is going on in the flex cafeterias.
- Markerboard and tack board install is ongoing.
- Ceiling tile being installed in classrooms.

Coming Up in the Week Ahead:

- Metal Panels in Area C.
- Brick Completion
- Area A Flooring
- Area C Flooring
- Gym Paint



Light Fixtures at Main Entrance



Area C East Side



Project Fun Fact: The coiling storm doors in the school are rated for tornados for a maximum impact of 100 MPH, 15 lbs. The doors are designed to withstand a max wind load of 250 P.S.F.

QUESTIONS? Please contact Project Manager Peter Saindon at 608.442.7358 or psaindon@findorff.com

Findorff

EXECUTIVE SUMMARY REPORT

MONONA GROVE SCHOOL DISTRICT

BUILDING TOGETHER. FORWARD TOGETHER.



Area C Main Stair



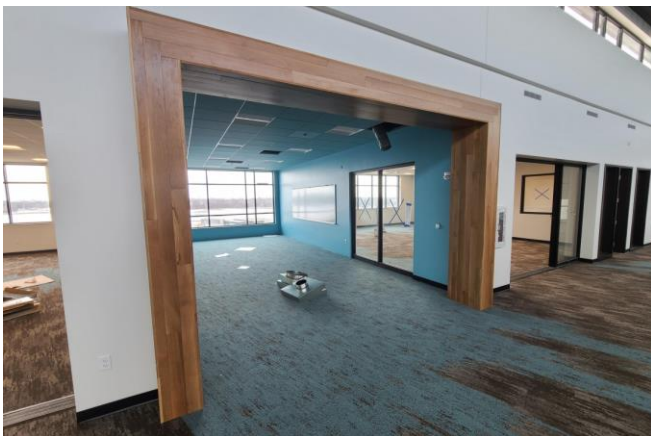
Area B Level 2



Area A Level 1



Social Stair



Area A Level 2 Workspace



Area A Level 2 Classroom

QUESTIONS? Please contact Project Manager Peter Saindon at 608.442.7358 or psaindon@findorff.com

Findorff