



2010-2011 School Accountability Report Card

## CALIFORNIA MONTESSORI PROJECT ELK GROVE CAMPUS

Serving Kindergarten through Eighth Grade  
8828 Elk Grove Blvd., Elk Grove, CA 95624  
Phone: (916) 714-9699 Fax: (916) 714-9703

### Executive Director's Message:



California Montessori Project (CMP) is a public charter school network (K-8) serving approximately 1809 students in the greater Sacramento area. Previously sponsored by Wheatland School District from 2001 through 2006, CMP currently operates under four charters, authorized by Buckeye Union, Elk Grove Unified, Sacramento City Unified and San Juan Unified School Districts. Our campuses are located in Shingle Springs, Elk Grove, Sacramento, Fair Oaks,

Orangevale and Carmichael.

The Montessori philosophy states that a child has an innate desire to learn and produce purposeful, meaningful work. Dr. Maria Montessori believed that the role of an adult in a child's education is to provide an appropriate environment, complete with tools and methods, to facilitate the child's own discovery of knowledge and skills at the time when it has the most impact for him/her as an individual. This system has a foundation in trust and respect of the individual, and a belief that children will soar beyond traditional expectations.

California Montessori Project offers an environment which has the tools, programs, resources, and support to enable students to become educated to high International academic standards, and to develop themselves to their fullest capacity as competent, happy, productive individuals, family members, employers/employees, and contributors to a better society and a peaceful world. This is achieved through a strong commitment from the community, parents, teachers, community groups, the Legislature and, most importantly, the individual child. CMP is grounded in a philosophy of trust in individuals to seek their greatest potential.

CMP holds that an educated person is well-rounded and balanced. The CMP student shall become a collaborative member of a community, motivated to set and achieve high goals. CMP encourages students to demonstrate empathy towards others through respectful and productive communications. The student is guided to view him/herself as a global citizen who is empowered, and responsible, for making positive changes in the world within the immediate environment. The CMP student develops personal habits leading to a healthy lifestyle which includes balancing leisure, work, family, exercise, nutrition and community.

California Montessori Project - Central Administration Office  
5330A Gibbons Dr. Ste 700, Carmichael, CA 95608  
Phone: (916) 971-2432 Fax: (916) 971-2436

### Principal's Message:



The California Montessori Project, Elk Grove Campus, is a Montessori public charter school offering kindergarten through eighth grade education under a charter authorized by the Elk Grove Unified School District. We are accredited by the Western Association of

Schools and Colleges (WASC) and the Montessori School Accreditation Commission (MSAC). Our program quality is sustained by supporting our California credentialed and Montessori trained faculty with continued professional development and quality Montessori materials in low student/teacher ratio classrooms.

We encourage our students to be independent learners and problem solvers. Our students utilize individualized work plans to allow them to work at their own level and pace. Cooperation and positive peer relationships are supported through daily Class Meetings. Respect is strongly emphasized and reinforced on a daily basis: respect for self, respect for others, and respect of our environment.

We have a strong school community with a high level of family involvement. Parents are encouraged to volunteer in the classroom, participate in field trips, and help organize special events and fundraisers. There are many opportunities for our families to be involved as a community and get to know one another. Among such events are the Annual Walk-a-Thon, Science Fair and Pancake Breakfast, Art Walk, Chili Cook-off, Continent Party, Harvest Luncheons, Wax Museum, Ice Cream Socials, and class performances.

"Education should no longer be mostly imparting of knowledge, but must take a new path, seeking the release of human potentialities."

-Maria Montessori

**2010-2011 School Accountability Report Card**  
**California Montessori Project-Elk Grove Campus**

**Parent Involvement:**

Parents play an active role in the California Montessori Project. Many parents exceed the required 40 hours of participation time, as they assist in the classrooms, chaperone students on fieldtrips, provide additional supervision during morning drop off and afternoon pick-up times, and organize special school events and fundraisers. Parents are also involved in many leadership roles, including service on the Campus Advisory Council, Gardening Committee, Fundraising Committee, and the CMP Governing Board.

For more information on how to become involved, contact Kathleen Merz, Principal at (916) 714-9699.

**School Facilities:**

The CMP Elk Grove Campus facility is a former public school campus leased through the Cosumnes Community Services District. The facility houses an office, five traditional classrooms and four large portable classrooms. Our Middle School Program resides in classrooms within the Elk Grove Congregational Church complex adjacent to our school grounds. The school grounds include a spacious field, a playground, and a large asphalt play area with a basketball court.

Custodial and maintenance services are provided in the late afternoon and evening through contractual services and parent volunteers.

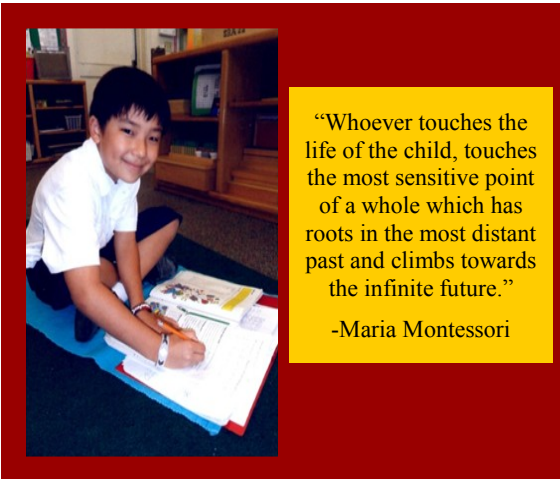


**Public Internet Access:**

Internet access is available at public libraries and other locations that are publicly accessible (e.g., the California State Library). Access is generally provided on a first-come, first-served basis.

**Suspension and Expulsion Data:**

Data reflects information for the most recent three-year period. The rate of suspensions and expulsions is calculated by dividing the total number of incidents by the total enrollment



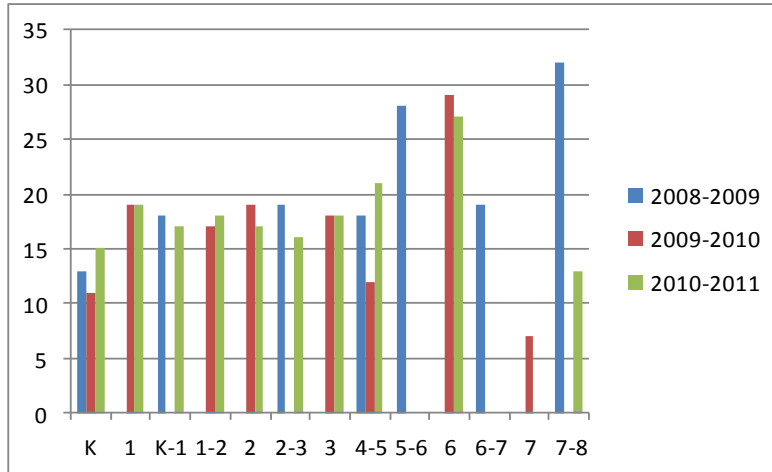
“Whoever touches the life of the child, touches the most sensitive point of a whole which has roots in the most distant past and climbs towards the infinite future.”  
 -Maria Montessori

Suspension Rate			
Elk Grove Campus			
	08-09	09-10	10-11
	5.0%	7.0%	2.0%
Elk Grove Unified School District			
	08-09	09-10	10-11
	19.5%	19.5%	17.8%
Expulsion Rate			
Elk Grove Campus			
	08-09	09-10	10-11
	0.3%	0.0%	0.0%
Elk Grove Unified School District			
	08-09	09-10	10-11
	.3%	.67%	<1%

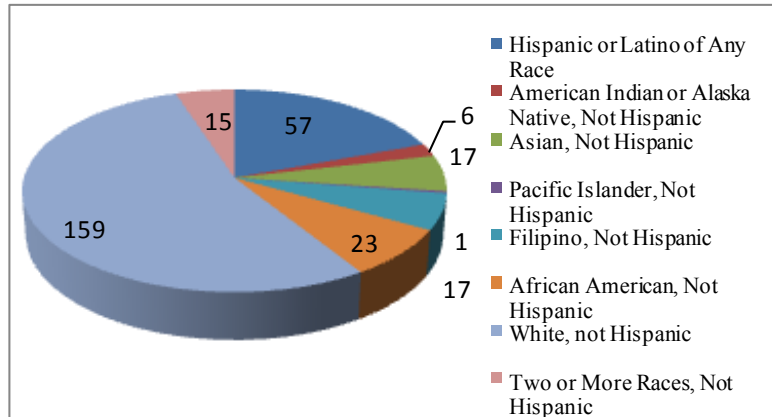
**Class Size Distribution** Bar graph displays data over 3 years.

Grade Level	2008-2009				2009-2010				2010-2011			
	Avg. Class Size	# of Classrooms			Avg. Class Size	# of Classrooms			Avg. Class Size	# of Classrooms		
		1-20	21-32	33+		1-20	21-32	33+		1-20	21-32	33+
K	13	2			11	4			15	3		
1	0				19	2			19	1		
K-1	18	4			0				17	1		
1-2	0				17	1			18	1		
2	0				19	1			17	1		
2-3	19	4			0				16	1		
3	0				18	2			18	2		
4-5	18	3			12	3			21	2	1	
5-6	28		1		0				0			
6	0				29		1		27		1	
6-7	19	1			0				0			
7	0				7	1			0			
7-8	32		1		0				13	2		

**Average Class Size: Three-Year Comparison**



**Student Enrollment by Group:** Total Enrollment = 295



“My vision of the future is no longer of people taking exams, earning a secondary diploma, and proceeding on to university, but of individuals passing from one stage of independence to a higher, by means of their own activity through their own effort to will, which constitutes the inner evolution of the individual.”

-Maria Montessori

### School Safety Plan:

California Montessori Project has a School Safety Plan and Emergency Preparedness Handbook that are reviewed every year with staff and teachers at each campus.

The CMP school-wide Safety Plan was submitted and approved as part of the 2011 Charter Petition in May 2011. Key elements of the plan include monthly drills and crisis intervention plans.

This plan is reviewed annually and was most recently reviewed, updated, and discussed with school faculty on August 12, 2011.

On what date was the School Safety Plan last reviewed, updated, and discussed with school faculty? The Education Code requires that this be done by March 1 each year.	Month	Year
	August	2011

### Professional Development:

CMP is committed to highly-trained teachers and dedicates significant resources toward ongoing professional development. Each year, CMP reserves five non-instructional service days for focused staff training and professional growth to include such topics as: Response to Intervention, Special Education, Montessori curriculum development, academic planning and other areas of educational specialty. CMP also offers occasional afternoon and weekend workshop opportunities that directly enhance teaching practices in line with the school's mission and vision. CMP offers induction support (BTSA) for newly credentialed teachers as well as tuition assistance for approved outside professional development events and activities.

Finally, CMP provides both tuition assistance and compensation incentives to teachers pursuing cross certification in Montessori education through accredited training centers. This additional level of teacher preparation consists of a rigorous course of study combined with practical classroom experience. In combination with CMP's entire professional development program, we are confident that the result is highly-trained teachers who are ready to lead our students into the 21<sup>st</sup> century.

### Instructional Materials and Textbooks:

CMP Elk Grove curriculum and materials used are aligned with California state standards. The school uses state-adopted textbooks to complement the Montessori materials. During the 2010-2011 school year, no students were lacking textbooks and instructional materials.

Subject	Textbooks and Instructional Materials
English Language Arts Grades: K-3	Primary Phonics, Modern Curriculum Press Great Source Education Press: Working Words in Spelling Albanesi Language Curriculum
English Language Arts Grades: 4-8	Great Source Education Press: Working Words in Spelling Prentice Hall: <i>Prentice Hall Literature, Timeless Voices, Timeless Themes Bronze Level Year A, Silver Level Year B</i> Individual novels for literature studies Worldly Wise Albanesi Language Curriculum
Mathematics Grades: K-3	Albanesi Math Curriculum Otter Creek Institute: Mastering Math Facts, Black Line Masters
Mathematics Grades: 4-6	Harcourt Brace: Math Albanesi Math Curriculum Otter Creek Institute: Mastering Math Facts, Black Line Masters
Mathematics Grades: 7-8	CGP: <i>Algebra, Course II</i> (Pre-Algebra) Holt McDougal: Geometry
Science Grades: 7-8	Prentice Hall: <i>Science Explorer – Cycle A Life Science, Cycle B Physical Science</i>
History- Social Science Grades: 4-5	Houghton Mifflin: Oh California Teacher's Curriculum Institute: <i>Social Studies Alive! – America's Past</i>
History- Social Science Grade 6	Teacher's Curriculum Institute: <i>History Alive! – Ancient Civilizations</i>
History- Social Science Grades: 7-8	Teacher's Curriculum Institute: <i>History Alive! – Cycle A Medieval World, Cycle B The United States Through Industrialization</i>



**Standardized Testing and Reporting:**

The Standardized Testing and Reporting (STAR) Program consists of several key tests, including the California Standards Test (CST), California Modified Assessment (CMA), and the California Alternate Performance Assessment (CAPA). The CSTs are multiple choice tests in English-Language Arts, Mathematics, Science, and History-Social Science for varying grade levels. Some grade levels also participate in an essay writing test. The CSTs are used to determine students' achievement of the California Academic Content Standards. These standards describe the knowledge and skills that students are expected to learn at each grade level and subject. The CMA is a modified assessment for students with disabilities who have an Individualized Education Plan (IEP). It is designed to assess those students whose disabilities prevent them from achieving grade-level proficiency on an assessment of the content standards with or without accommodations. The CAPA is an alternative assessment for students with significant cognitive disabilities who are unable to take the CST with accommodations or modifications or the CMA with accommodations.

*For a complete report of all test results, participation, groups and scores by grade level, visit: <http://star.cde.ca.gov/star2011/>*



“It is self evident that the possession of and contact with real things bring with them above all, a real quantity of knowledge. Instruction becomes a living thing. Instead of being illustrated, it is brought to life. In a word, the outing is a new key for the intensification of instruction ordinarily given in school.”

-Maria Montessori

**STAR Results for All Students: Three-Year Comparison**

In order to compare student achievement to state standards, results are reported as performance levels. Students scoring at the Proficient or Advanced level meet state standards in that content area. The five performance levels are: **Advanced**—exceeds state standards, **Proficient**—meets state standards, **Basic**, **Below Basic** and **Far Below Basic**—students do not meet state standards.

**Percent of Students Scoring Proficient or Advanced**

	CMP-Elk Grove			Elk Grove U.S.D.			California		
	08-09	09-10	10-11	08-09	09-10	10-11	08-09	09-10	10-11
English Language Arts	76%	61%	66%	64%	68%	57%	50%	54%	54%
Mathematics	77%	49%	64%	70%	72%	53%	46%	59%	50%
Science	69%	69%	53%	54%	63%	60%	50%	53%	56%
History-Social Science	56%	53%	□	□	□	54%	41%	47%	48%

**STAR Test Results By Student Group**

The chart below reflects STAR Results in English-Language Arts, Mathematics, Science, and History-Social Science broken down by student group. □ Scores not shown when 10 or less students are tested.

Percent of Students Scoring at Proficient or Advanced Levels				
Spring 2010 Results				
	English Language Arts	Mathematics	Science	History/Social Science
Male	58%	64%	45%	□
Female	73%	65%	67%	□
Economically Disadvantaged	67%	65%	□	□
English Learners	□	□	□	□
Students with Disabilities	24%	24%	24%	□
Receiving Migrant Education Services	□	□	□	□
African American	64%	71%	□	□
American Indian/Alaska Native	□	□	□	□
Asian	80%	80%	□	□
Filipino	73%	73%	□	□
Hispanic or Latino	46%	58%	33%	□
Pacific Islander	□	□	□	□
White	72%	64%	69%	□

### Academic Performance Index (API):

The Academic Performance Index (API) is an annual measure of the academic performance and progress of schools in California. The API is a score on a scale of 200-1,000 that reflects a school's, district's or a student group's performance level, based on the results of statewide testing. An API score of 800 is set as the statewide target.

Each annual API reporting cycle includes a Base and a Growth API. The Base API starts the reporting cycle and is released approximately one year after testing. For example, if the testing occurs in the spring of 2010, the Base API is available in the spring of 2011. The growth API is released after the Base API but is calculated from test results from the following year. For example, for testing in the spring of 2010, the Growth API is available in the summer of 2011. Therefore, for the 2010-2011 API reporting cycle, the 2010 Base indicator and the 2011 Growth indicator are used.

To learn more about the API, visit the API information guide at <http://www.cde.ca.gov/ta/ac/ap/documents/infoguide11.pdf>

<b>API Ranks – A Three-Year Comparison</b>			
	2008	2009	2010
Statewide API Ranks	4	4	5
Similar Schools API Rank	1	1	1

**API Testing Note:** Data are reported for numerically significant groups only; the group must have at least 50 students with valid test scores who make up 15% of the valid test scores, or have at least 100 students with valid test scores.

### Adequate Yearly Progress (AYP):

No Child Left Behind (NCLB) legislation requires that all schools and districts meet Adequate Yearly Progress requirements. To meet these requirements, public schools and districts must meet or exceed criteria in four target areas:

- 1: Participation rate on statewide assessments in English-Language Arts and Mathematics.
- 2: Percentage of students scoring proficient on statewide assessments in English-language arts and mathematics.
- 3: API Scores.
- 4: Graduation rates for high schools.

<b>Adequate Yearly Progress Data</b>				
<b>CMP-Elk Grove</b>			<b>Elk Grove Unified School District</b>	
AYP Criteria	English-Language Arts	Mathematics	English-Language Arts	Mathematics
Met Overall AYP	Yes	Yes	No	No
Participation Rate	Yes	Yes	Yes	Yes
Percent Proficient	Yes	Yes	No	No
API	Yes		Yes	
Graduation Rate	▣		87.70%	

<b>API Ranks Growth by Student Group – Three Years</b>				<b>API Growth Score</b>
<b>CMP - Elk Grove Campus</b>	2008	2009	2010	2011
Actual API	33	19	33	832
African American	▣	▣	▣	▣
American Indian or Alaska Native	▣	▣	▣	▣
Asian	▣	▣	▣	▣
Filipino	▣	▣	▣	▣
Hispanic or Latino	▣	▣	▣	▣
Pacific Islander	▣	▣	▣	▣
White	32	23	29	841
Socio-Economically Disadvantaged	▣	▣	▣	▣
English Learners	▣	▣	▣	▣
Students with Disabilities	▣	▣	▣	▣

**California Physical Fitness Test:**

During the spring, students in grades 7 and 5 are required to participate in the California Physical Fitness Test (PFT). The State Board of Education (SBE) designated the “*Fitnessgram*®” as the PFT for students in California. The test measures six key areas:

**Aerobic Capacity****Body Composition****Flexibility****Abdominal Strength and Endurance****Upper Body Strength and Endurance****Trunk Extension Strength and Flexibility**

The primary goal of the test is to assist students in developing lifetime habits of regular physical activity. The table shows the percentage of students meeting the fitness standards for the most recent testing period. For more detailed information, please visit: [www.cde.ca.gov/ta/tg/pf/](http://www.cde.ca.gov/ta/tg/pf/).

Physical Fitness Testing	
Percentage of Students Meeting Standards:	
<b>Grade 5</b>	
Four of Six Standards	66.6%
Five of Six Standards	36.6%
Six of Six Standards	13.3%
<b>Grade 7</b>	
Four of Six Standards	81%
Five of Six Standards	52.4%
Six of Six Standards	42.9%

■ To protect student privacy, scores not shown when the number of students tested is less than 10

**Teacher Qualifications:**

This table shows information about Teacher credentials and qualifications. For further information visit: <http://dq.cde.ca.gov/dataquest/>

Teacher Credential Information				
Teachers	Elk Grove U.S.D	CMP-Elk Grove		
	10-11	08-09	09-10	10-11
With Full Credential	2913	18	19	16
Teaching Outside Subject Area of Competence	0	0	0	0

**Core Academic Classes Taught by Highly Qualified Teachers:**

The Federal Elementary and Secondary Education Act (ESEA), also known as No Child Left Behind (NCLB), requires that core academic subjects be taught by Highly Qualified Teachers, defined as having at least a bachelor’s degree, an appropriate California teaching credential, and have demonstrated core academic subject area competence. For more information, see the CDE Improving Teacher and Principal Quality Web page at: <http://www.cde.ca.gov/nclb/sr/tq/>

Highly Qualified Teachers		
Percent of Classes in Core Academic Subjects		
	Taught by Highly Qualified Teachers	Not Taught by Highly Qualified Teachers
CMP-Elk Grove Campus	100%	0%
All Schools in District	100%	0%
High-Poverty Schools	.2%	0%
Low Poverty Schools	99.8%	0%

Note: Low-poverty schools are defined as those schools having less than a 25% eligibility rate for the Free and Reduced Meals Program. High-poverty schools are defined as those schools having a greater than 75% eligibility rate for the Free

**Teacher misassignments and Vacant Teacher Positions:**

Misassignments refers to the number of positions filled by teachers who lack legal authorization to teach that grade level, subject area, student group, etc. Total Teacher misassignments includes the number of misassignments of Teachers of English learners

CMP-Elk Grove School Support Staff	
Teaching Assistants	13
Library Media Services Staff (Paraprofessional)	0
Librarian	0
Nurse	0
Occupational Therapist	1
Psychologist	1
Resource Specialist (non-teaching)	1
Language, Speech and Hearing Specialist	1
Social Worker	0
Other	3

### Federal Intervention Program:

Schools and Districts receiving Title 1 funding can enter Program Improvement (PI) if they fail to meet AYP over two consecutive years in the same content area or on the same API indicator. Each additional year that they do not meet AYP, they advance to the next level of intervention. This table displays the 2010-2011 Program Improvement status for the school and district. For more information please visit [www.cde.ca.gov/ta/ac/av/](http://www.cde.ca.gov/ta/ac/av/). ■ Not applicable

Program Improvement		
	Elk Grove Campus	Elk Grove Unified School District
Program Improvement Status	Not in PI	In PI
First Year of Program Improvement	■	2009-2010
Year In Program Improvement	■	Year 3
Number of Schools Identified for Program Improvement		
		12
Percent of Schools Identified for Program Improvement		
		18.2%

### Financial Data Comparison:

The tables below show per pupil expenditures from unrestricted funds and the school's average teacher salary. This data is compared to state and district data. Financial data given is obtained from the most current data available provided by the state. This data is always two years behind the current school year, therefore this report card contains data from the 2009-2010 school year. For detailed information, please visit: <http://www.cde.ca.gov/ds/fd/cs> and <http://www.cde.ca.gov/ds/fd/ec>

	Expenditures Per Pupil From Unrestricted Sources	Average Teacher Salary
CMP - Elk Grove	\$6,299	\$39,526.
California Montessori Project	\$6,472	\$30,398
California	\$5,455	\$69,207
School and District Percent Difference	-3%	13%
School and California Percent Difference	13%	-43%

### School Financial Data:

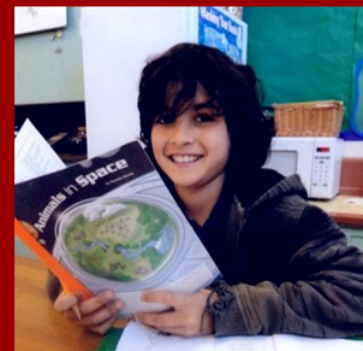
School Financial Data	
	Elk Grove Campus
Total Expenditures Per Pupil	\$6,983
Expenditures Per Pupil Restricted Sources	\$684
Expenditures Per Pupil Unrestricted Sources	\$6,299
Average Teacher Salary	\$39,526

### District Financial Data:

District Salary Data		
Category	Elk Grove Unified School District	Similar Sized District
Beginning Teacher Salary	\$40,047	\$42,377
Mid-Range Teacher Salary	\$59,384	\$67,667
Highest Teacher Salary	\$82,031	\$87,102
Average Principal Salary (Elementary)	\$110,369	\$108,894
Average Principal Salary (High School)	\$121,594	\$124,531
Superintendent Salary	\$255,030	\$223,323
Teacher Salaries Percent of Budget	44%	40.20%
Administrative Salaries Percent of Budget	4.00%	5.50%

### Types of Services Funded:

California Montessori Project-Elk Grove receives Federal American Recovery and Reinvestment Act of 2009 (ARRA) funds, Federal Local Assistance funds for Special Education through the Yuba County Office of Education Local Plan Area (YCOE SELPA) and Class Size Reduction (CSR) monies.



The first aim of the prepared environment is, as far as it is possible, to render the growing child independent of the adult."

~ Maria Montessori