

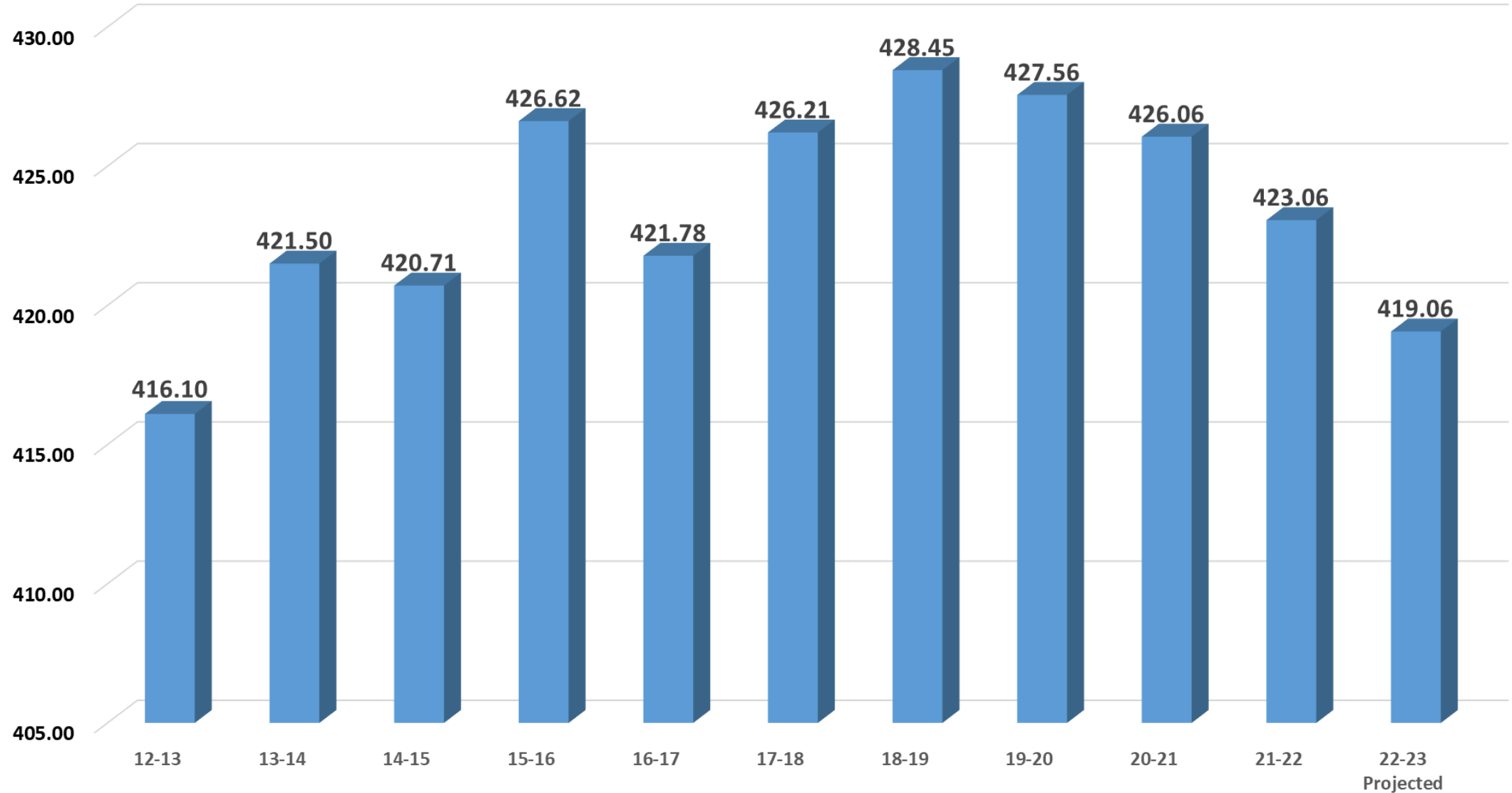
HOLLIDAYSBURG AREA SCHOOL DISTRICT

2022-2023 BUDGET INFORMATION SESSIONS

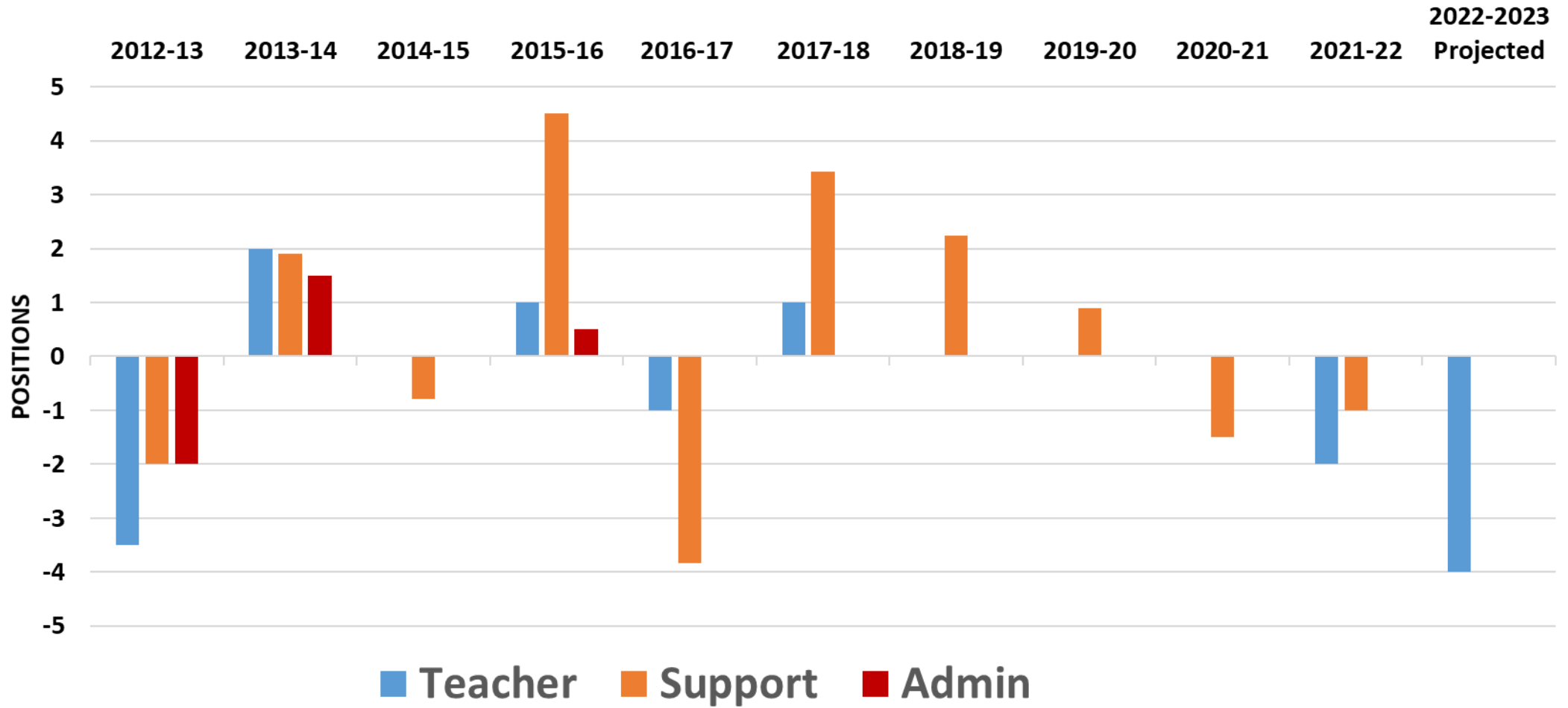
#3 Staffing and Enrollment

4/13/2022

FTE HISTORY - GENERAL FUND



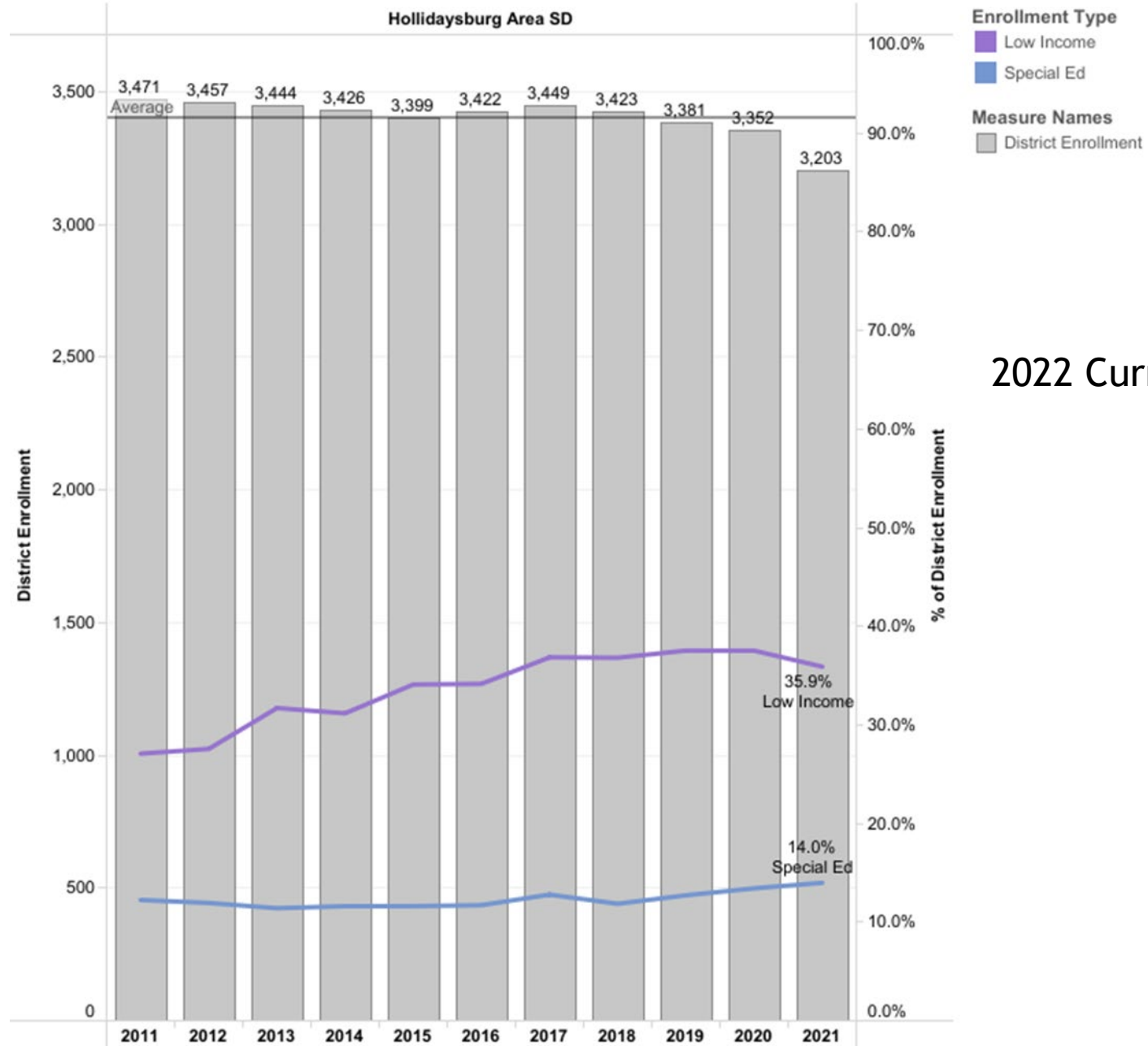
STAFFING CHANGES



Enrollment Breakdown (District Level)

District(s): Hollidaysburg Area SD

Source: PA DOE Enrollment Data



2022 Current Enrollment
3,176

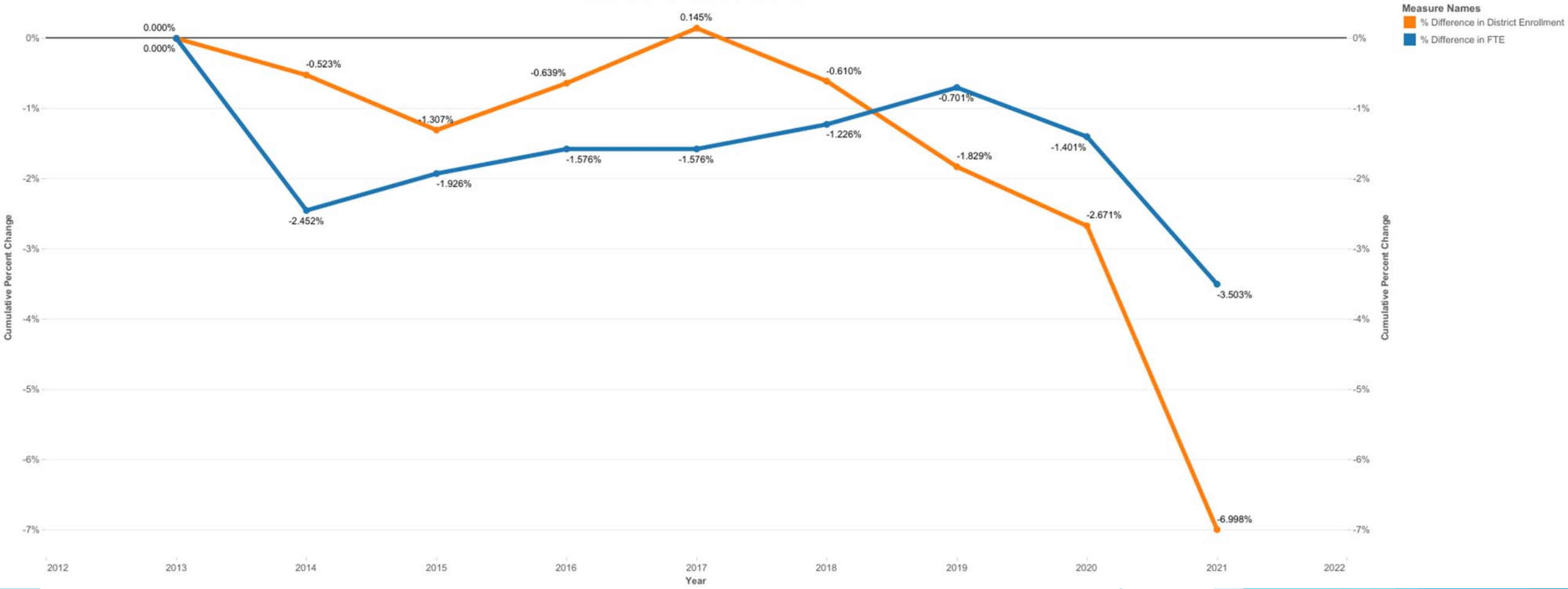
FTE Change versus Enrollment Change

Cumulative Change from Base Year

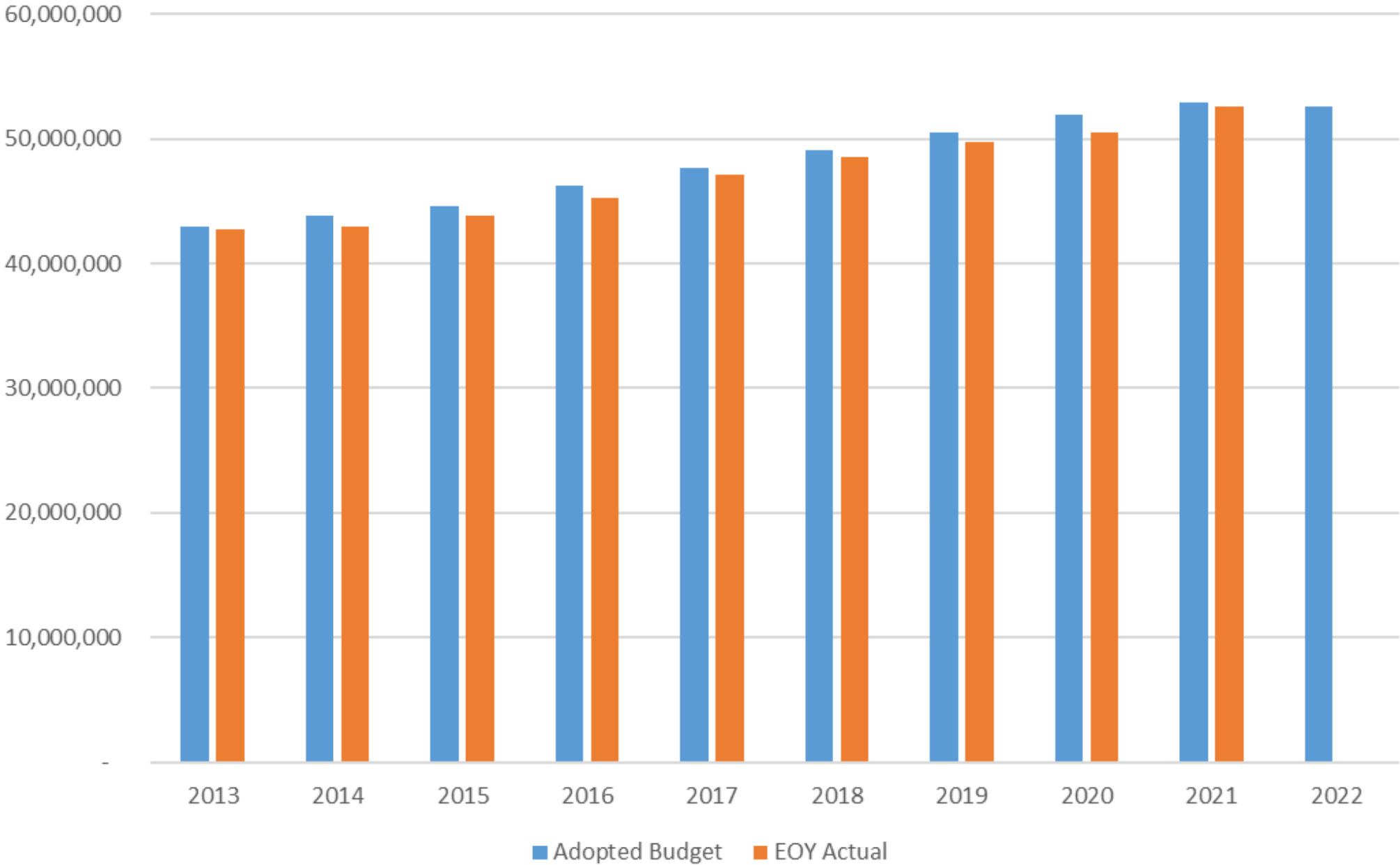
District: Hollidaysburg Area SD

Position(s): All

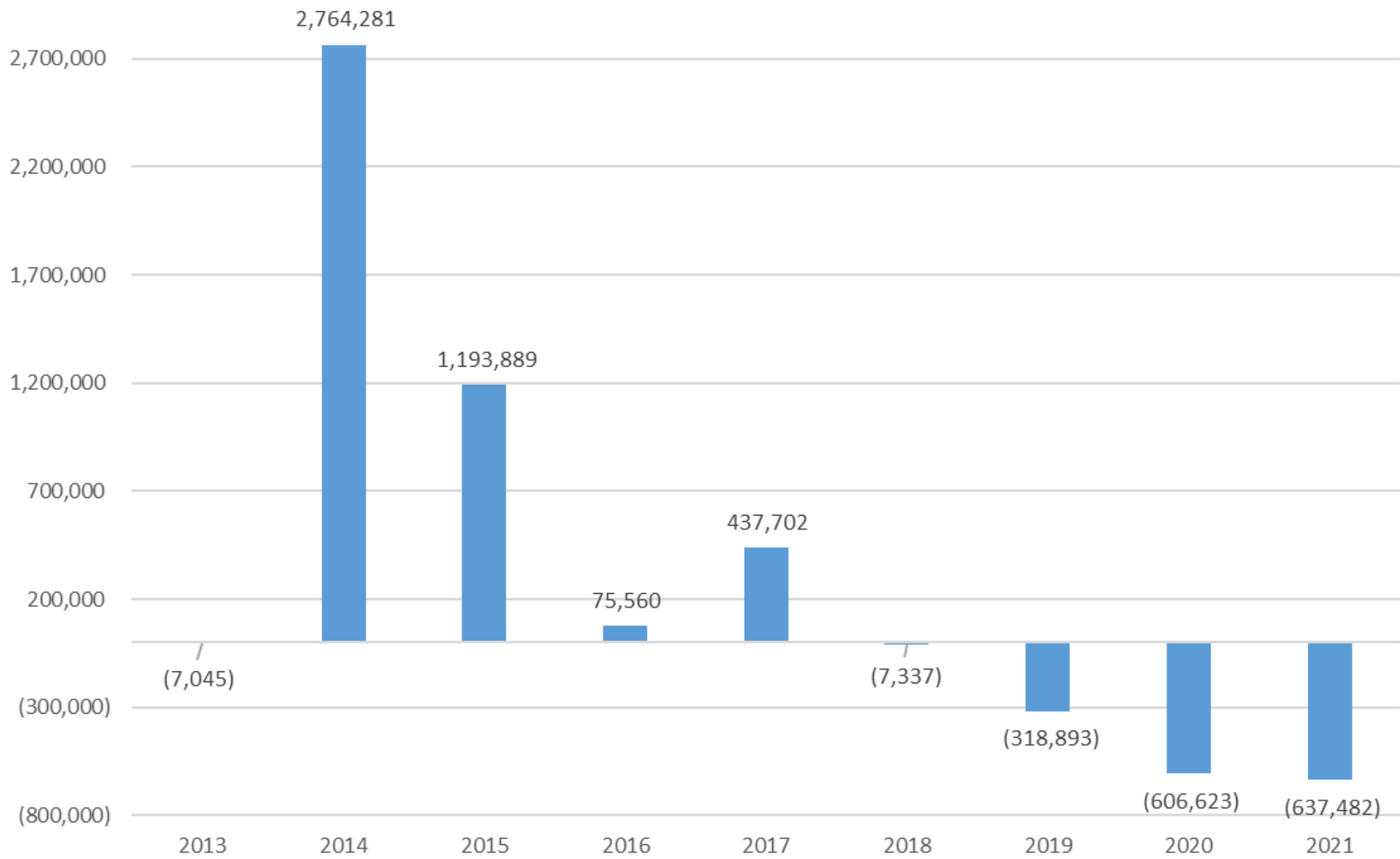
Source: DOE - Salary and Enrollment Records



Budget vs Actual



Surplus/(Deficit)



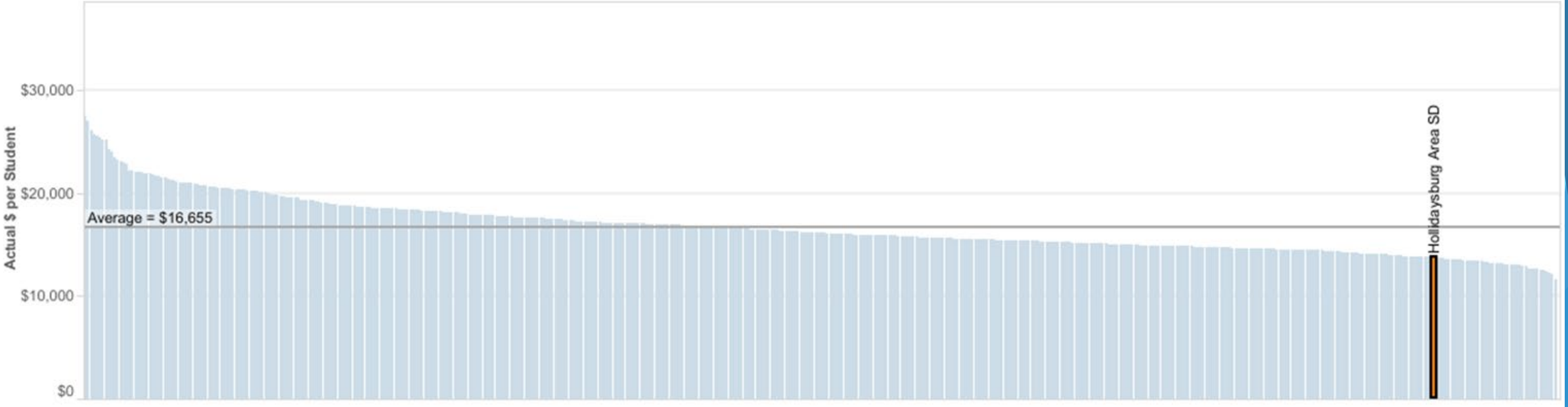
Spending Ranking - Hollidaysburg Area SD - 2020

Function(s): 1000 INSTRUCTION, 2000 SUPPORT SERVICES, 3000 OPERATION OF NON-INSTRUCTIONAL SERVICES

Object(s): All

Source: Pennsylvania Department of Education

Notes: 'Total Operating Expense' excludes functions '4000 Facilities Acquisition, Construction and Improvement Services' and '5000 Other Expenditures and Financing Uses';
'Actual \$ Per Student' is calculated based on Average Daily Membership when available and regular enrollment when not available.



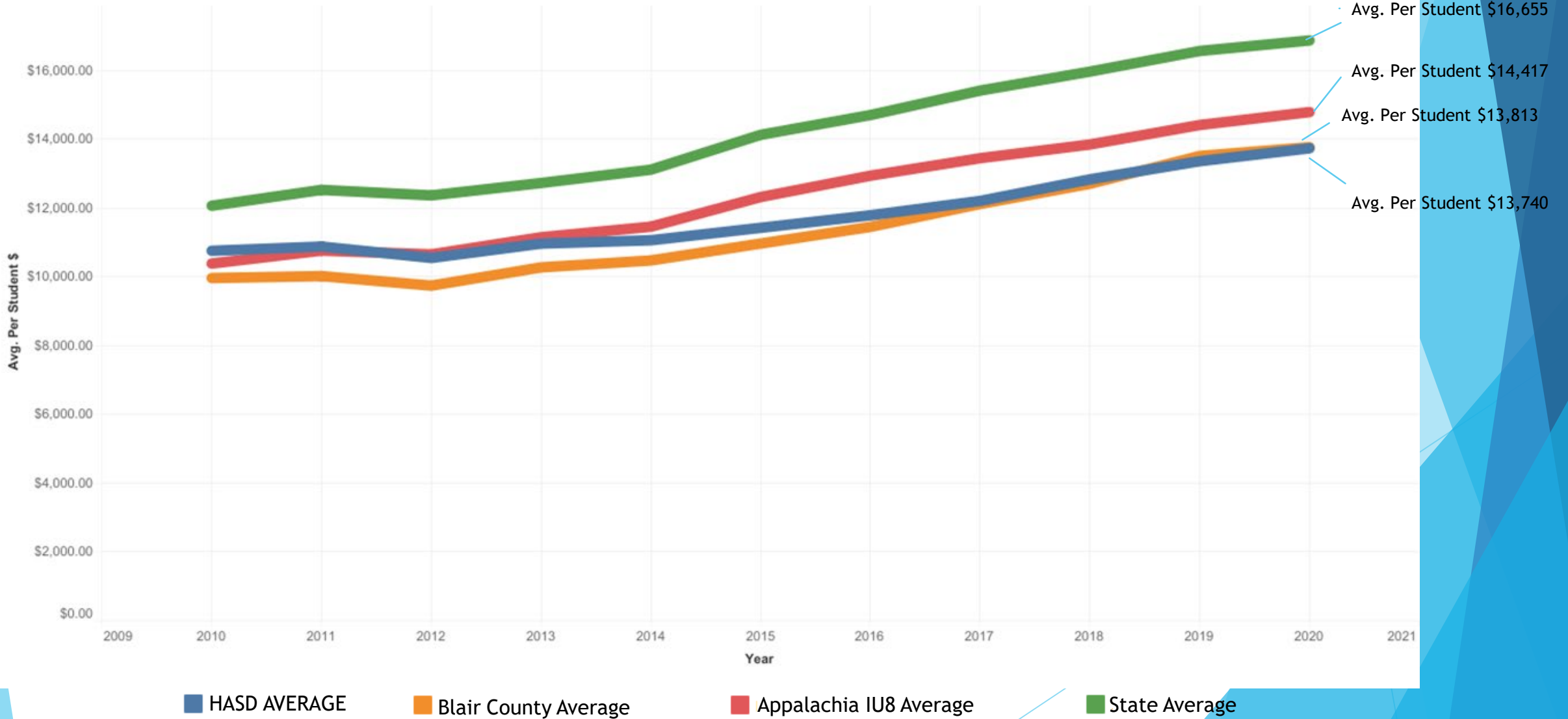
HASD Avg. Spending Per Student \$13,740
State Rank 459/500

Per Student Spending Comparison

Focus District: Hollidaysburg Area SD

Source: Pennsylvania Department of Education

Note: Actual \$ Per Student is calculated based on Average Daily Membership when available and regular enrollment when not available.



2020 Blair County Avg. Spending per Student

