

Contents

Our Schools.....	3
School Quality Profiles	4
Feeder Patterns	4
Elementary School Districts	5
Middle School Districts.....	6
High School Districts	7
Overview of School Budgets	8
Budget Summary by Schools.....	9
Agnor-Hurt Elementary	10
Baker-Butler Elementary	12
Broadus Wood Elementary	14
Brownsville Elementary.....	16
Crozet Elementary	18
Greer Elementary	20
Hollymead Elementary	22
Meriwether Lewis Elementary	24
Mountain View Elementary	26
Murray Elementary.....	28
Red Hill Elementary	30
Scottsville Elementary.....	32
Stone-Robinson Elementary	34
Stony Point Elementary.....	36
Woodbrook Elementary.....	38
Burley Middle School	40
Henley Middle School	42
Journey Middle School (formerly Jouett Middle School).....	44
Lakeside Middle School	46
Walton Middle School	48
Albemarle High School.....	50
Monticello High School.....	52
Western Albemarle High School	54
Community Lab School	56
Center I.....	58
Post High.....	60



Charlottesville Albemarle Technical Education Center (CATEC) 62

Multi-School Services..... 64

School Program Categories 67

Our Schools

Based on fall enrollment for the 2021-22 school year, our schools serve 13,697 students, including:

- 6,222 elementary school students in preschool through fifth grade;
- 3,096 middle school students in grades 6-8; and
- 4,379 high school students in grades 9-12.

Elementary Schools (PK-5)

- Agnor-Hurt
- Baker-Butler
- Broadus Wood
- Brownsville
- Crozet
- Mary C. Greer (Greer)
- Hollymead
- Meriwether Lewis
- Mountain View
- Virginia L. Murray (Murray)
- Red Hill
- Scottsville
- Stone-Robinson
- Stony Point
- Woodbrook

Middle Schools (6-8)

- Jackson P. Burley (Burley)
- Joseph T. Henley (Henley)
- Jack Jouett (renamed “Journey” as of July 1, 2022)
- Lakeside
- Leslie H. Walton (Walton)

High Schools (9-12)

- Albemarle (AHS)
- Monticello (MoHS)
- Western Albemarle (WAHS)

Charter School (6-12)

- Community Lab School

Other Programs

- Post High

School Quality Profiles

For every school division and school in the Commonwealth, the Virginia Department of Education provides a School Quality Profile containing information about student achievement, college and career readiness, program completion, school safety, teacher quality, and other topics of interest to parents and the general public.

View the School Quality Profile for Albemarle County Public Schools at:
<http://schoolquality.virginia.gov/divisions/albemarle-county-public-schools>

Feeder Patterns

Public schools in Albemarle County are divided into three “feeder patterns” according to geographical area: Northern, Southern and Western. A feeder pattern consists of the elementary, middle and high schools through which students progress.

	Northern	Southern	Western
Elementary Schools	Agnor-Hurt* Baker-Butler Broadus Wood Greer Hollymead Stony Point* Woodbrook	Mountain View* Red Hill Scottsville Stone-Robinson* Stony Point*	Brownsville Crozet Meriwether Lewis Murray
Middle Schools	Burley** Journey Lakeside	Burley** Walton	Henley
High Schools	Albemarle	Monticello	Western Albemarle

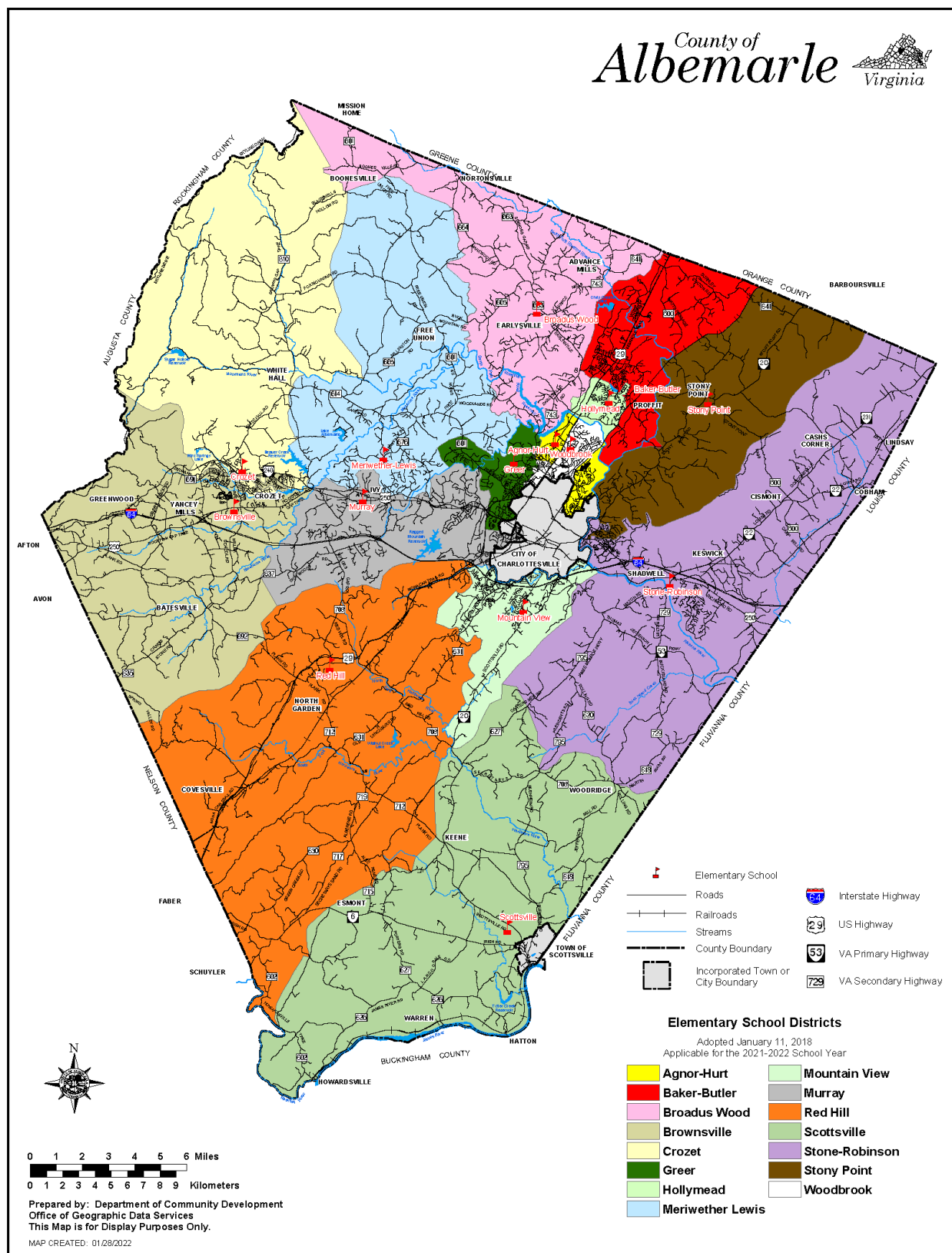
**Student body splits at the middle school level:*

- Agnor-Hurt Elementary School students will continue to either Burley or Journey Middle School and then Albemarle High School.
- Stony Point Elementary School students will continue to either Burley Middle School and then Monticello High School, or Lakeside Middle School followed by Albemarle High School.
- Mountain View and Stone-Robinson Elementary School students will continue to either Burley or Walton Middle School and then Monticello High School.

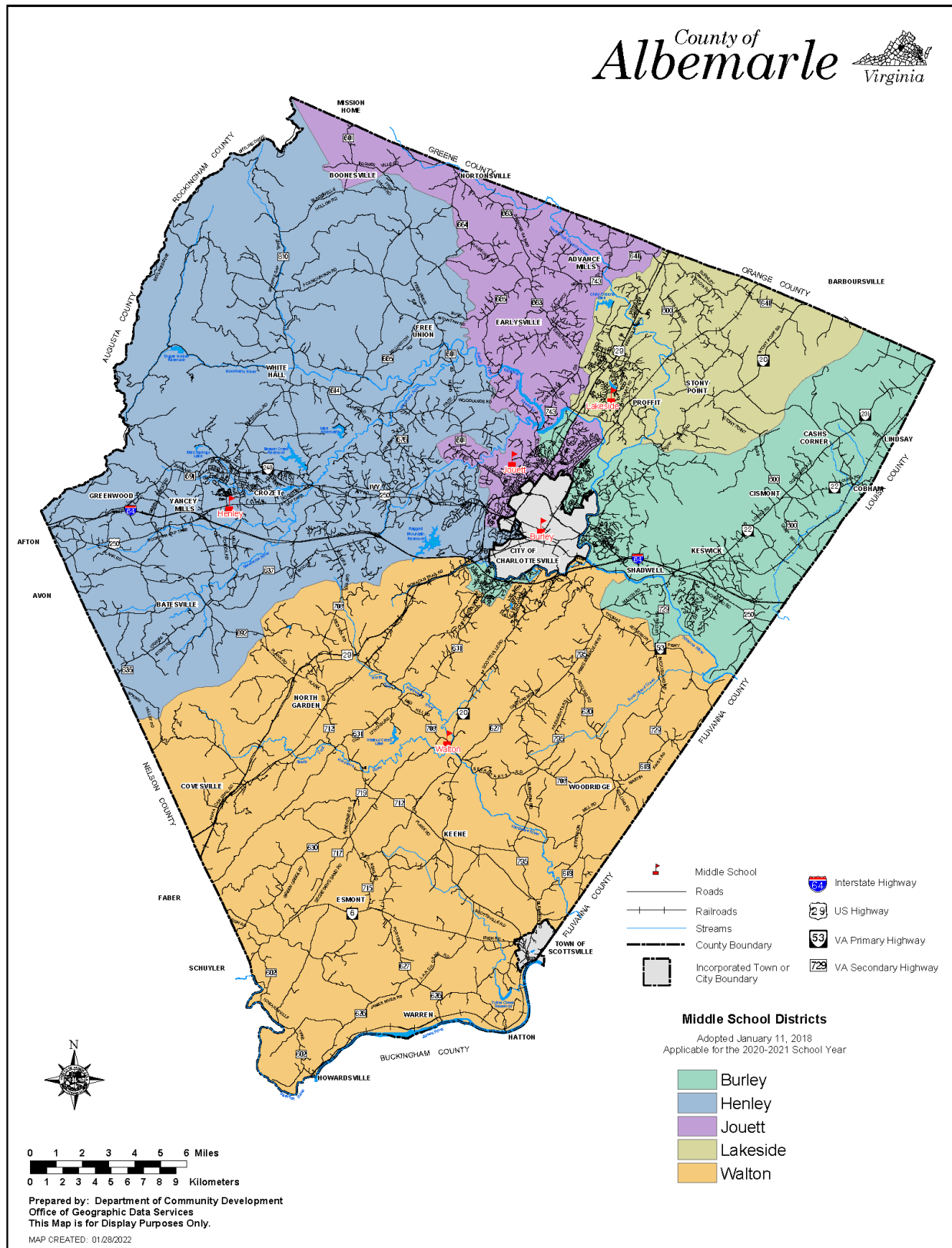
***Student body splits at the high school level:*

- Burley Middle School students will attend either Albemarle or Monticello High School.

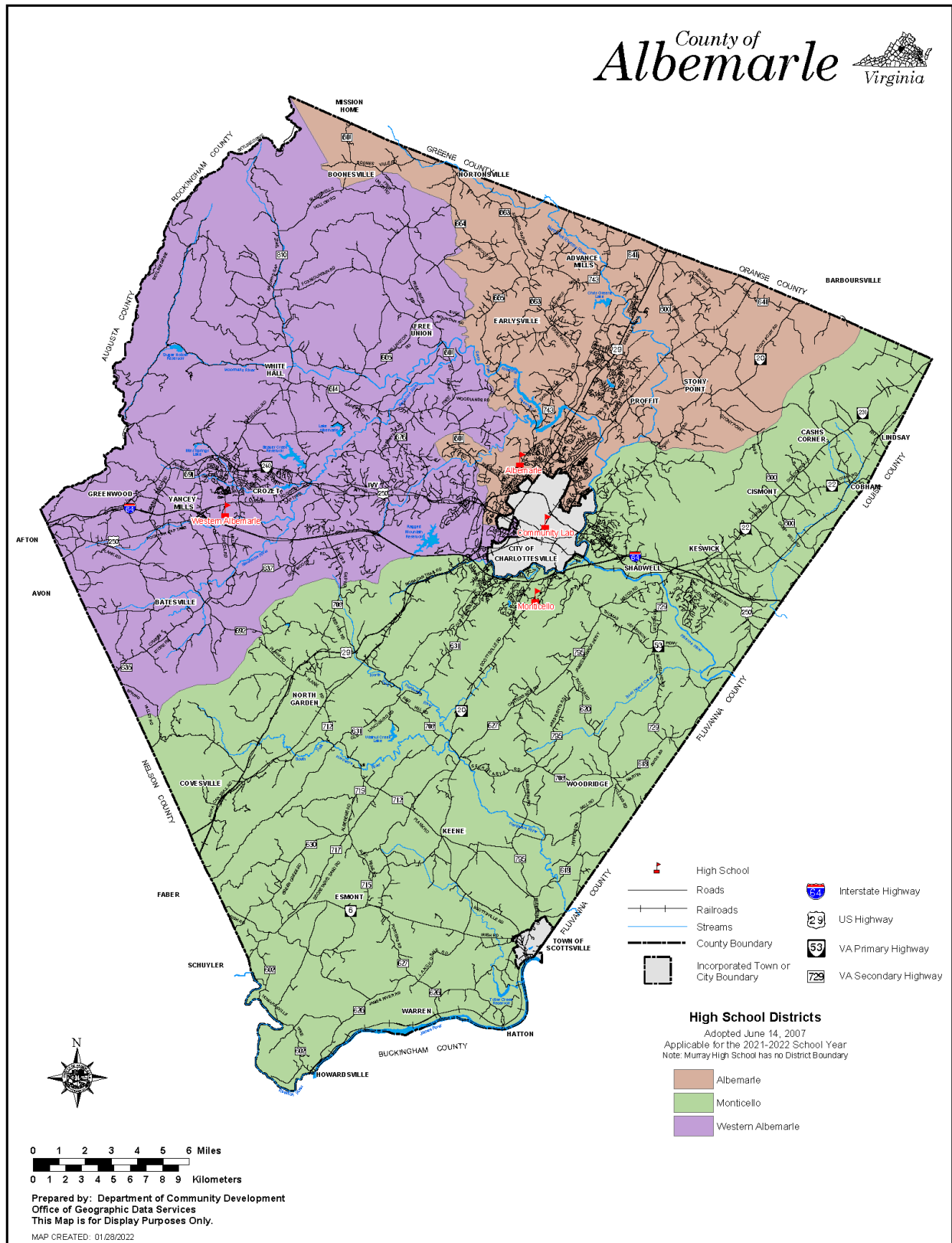
Elementary School Districts



Middle School Districts



High School Districts



Overview of School Budgets

School budgets are primarily driven by and developed based on projected student enrollment and demographics. The majority of budgeted funds can be attributed to staff compensation. Schools are provided staffing resources based on the Division's staffing standards and formulas. The remaining budget is allocated for general operations and determined by various factors, including student enrollment and demographics. Section G contains detailed information about these budget factors and allocations.

FY 2022/23 Changes

Changes in School Budgets are described in Section A and include:

Non-Discretionary / Technical

- Baseline Adjustment
- Health Care Rate Increase
- High School Athletics
- IDEA Special Education
- Transfer to CATEC
- Voluntary Early Retirement Incentive Program (VERIP) Increase

Operational Changes and Restoration

- Positions Restoration
- Relief Custodians
- School Operations

Enrollment and Demographics

- Enrollment and Demographics
- Special Education Staffing

New Proposals

- Compensation Increase
- Assistant Principals in Elementary Schools
- Health Services
- Substitute Program

Budget Summary by Schools

22 Adopted v. 23 Adopted

School Type	18-19 Actuals	19-20 Actuals	20-21 Actuals	21-22 Adopted	21-22 FTE	22-23 Adopted	22-23 FTE	Increase	Increase %
Elementary Schools	\$61,116,960	\$63,313,533	\$62,758,326	\$68,304,336	924.63	\$73,223,528	897.44	\$4,919,192	7.2%
Agnor-Hurt	\$4,632,132	\$4,753,511	\$4,754,199	\$4,849,465	63.98	\$5,097,329	59.97	\$247,864	5.1%
Baker-Butler	\$5,723,175	\$6,014,717	\$6,236,089	\$6,751,865	96.51	\$7,214,666	88.45	\$462,801	6.9%
Broadus Wood	\$2,603,742	\$2,800,640	\$2,821,758	\$3,064,660	40.05	\$3,500,094	42.91	\$435,434	14.2%
Brownsville	\$6,198,751	\$6,614,957	\$6,775,456	\$7,562,616	101.30	\$5,759,446	70.55	(\$1,803,170)	-23.8%
Crozet	\$3,359,989	\$3,153,338	\$3,120,415	\$3,506,643	47.55	\$5,470,793	62.90	\$1,964,150	56.0%
Greer	\$5,455,343	\$5,630,102	\$5,366,192	\$5,627,067	76.86	\$5,802,581	70.09	\$175,514	3.1%
Hollymead	\$4,159,159	\$3,997,658	\$3,966,983	\$4,278,565	57.26	\$4,085,583	48.36	(\$192,982)	-4.5%
Meriwether Lewis	\$3,560,842	\$3,729,299	\$3,214,351	\$3,615,447	45.41	\$3,505,591	42.56	(\$109,856)	-3.0%
Mountain View	\$6,502,684	\$7,098,804	\$7,025,635	\$7,644,869	102.41	\$8,425,528	101.36	\$780,659	10.2%
Murray	\$2,677,737	\$2,771,147	\$2,758,647	\$3,113,760	42.44	\$3,620,201	46.95	\$506,441	16.3%
Red Hill	\$2,286,763	\$2,227,076	\$2,024,374	\$2,251,011	29.75	\$2,554,685	30.16	\$303,674	13.5%
Scottsville	\$2,400,328	\$2,449,970	\$2,280,630	\$2,454,562	34.07	\$2,814,035	36.37	\$359,473	14.6%
Stone-Robinson	\$4,116,766	\$4,430,218	\$4,785,431	\$5,269,751	77.12	\$5,554,004	73.41	\$284,253	5.4%
Stony Point	\$2,454,715	\$2,554,922	\$2,372,613	\$2,440,352	31.85	\$2,823,385	33.78	\$383,033	15.7%
Woodbrook	\$4,984,835	\$5,087,174	\$5,255,555	\$5,873,703	78.07	\$6,995,607	89.60	\$1,121,904	19.1%
Middle Schools	\$26,181,501	\$27,268,160	\$29,131,285	\$31,301,430	393.46	\$33,455,887	393.46	\$2,154,457	6.9%
Burley	\$5,198,658	\$5,283,305	\$6,172,446	\$6,477,798	79.95	\$6,968,511	81.04	\$490,713	7.6%
Henley	\$6,565,912	\$6,934,345	\$7,155,003	\$7,643,880	95.45	\$7,756,570	91.51	\$112,690	1.5%
Journey	\$5,343,355	\$5,776,771	\$6,379,652	\$6,935,231	89.84	\$7,693,189	93.34	\$757,958	10.9%
Lakeside	\$5,113,936	\$5,119,104	\$5,056,625	\$5,478,737	67.17	\$5,746,799	65.14	\$268,062	4.9%
Walton	\$3,959,640	\$4,154,636	\$4,367,559	\$4,765,784	61.05	\$5,290,818	62.43	\$525,034	11.0%
High Schools	\$39,639,084	\$40,025,900	\$38,574,693	\$42,261,545	495.32	\$48,458,363	526.84	\$6,196,818	14.7%
Albemarle	\$17,925,825	\$17,534,069	\$16,540,034	\$17,726,904	212.69	\$20,447,891	226.90	\$2,720,987	15.3%
Monticello	\$11,008,314	\$11,320,846	\$11,233,902	\$12,490,022	145.09	\$14,189,435	151.86	\$1,699,413	13.6%
Western Albemarle	\$10,704,945	\$10,845,381	\$10,283,586	\$11,249,959	127.99	\$12,714,290	135.32	\$1,464,331	13.0%
Center I		\$325,604	\$517,171	\$794,660	9.55	\$1,106,747	12.76	\$312,087	39.3%
Community Lab School	\$2,407,109	\$2,225,687	\$2,384,459	\$2,490,135	29.15	\$2,790,475	33.32	\$300,340	12.1%
CATEC	\$1,789,085	\$1,770,408	\$1,773,175	\$2,043,386	1.65	\$2,365,304	3.33	\$321,918	15.8%
Post High			\$419,416	\$458,763	7.66	\$550,781	9.33	\$92,018	20.1%
Center For Learning & Growth			\$196,923	\$392,827	4.34	\$462,333	4.34	\$69,506	17.7%
Multi-School Services	\$5,628,900	\$6,049,813	\$6,370,722	\$9,725,178	104.37	\$11,543,512	114.15	\$1,818,334	18.7%
Total	\$136,762,640	\$140,653,501	\$141,609,000	\$156,977,600	1,960.58	\$172,850,183	1,982.21	\$15,872,583	10.1%

AGNOR-HURT ELEMENTARY SCHOOL

Home of the Alligators

Agnor-Hurt Elementary

General School Information

- Grades Served: PK-5
- Address: 3201 Berkmar Drive, Charlottesville, VA 22901
- Phone: 434-973-5211
- Principal: Michael Irani

Agnor-Hurt is an elementary school that serves children on the northern edge of Charlottesville. Our community spans 4.1 square miles of Albemarle County along the Rio Road/Hydraulic Road corridor between the city limits of Charlottesville and Albemarle High School. Our core purpose is to establish a community of young learners by learning through building relationships, creating relevance, and holding to high levels of rigor for each and every child every single day.

Agnor-Hurt is committed to closing all achievement gaps by 2024 and has embraced the school division's mission of ending the predictive value of race, class, gender, and special capacities on student success. We will achieve this by embracing culturally responsive teaching, employing best instructional practices in reading and math, and leveraging the effectiveness of the PLC model.

Like other elementary schools in our division, we use the Virginia Standards of Learning as our core content. We design powerful learning experiences that engage children around their interests, have high expectations for each child, and identify practices that are holding children back from learning. Our school serves children who speak 18 different languages. Just over half of our students are economically disadvantaged. Nearly one-quarter of our students identify as African-American/ Black, and another 25% identify as Hispanic/Latino. Approximately 33% of our students identify as White.



Michael Irani
Principal
2021-Present

Student Enrollment: Historical Fall Membership[^]

	2019-2020	2020-2021	2021-2022
Total Enrollment	473	432	452
Students with Disabilities	12.9%	10.2%	11.1%
English Learners	20.3%	22.5%	25.7%
Economically Disadvantaged	50.1%	47.0%	50.2%

FY 2022-23 Budget Factors

Projected	
Total Enrollment	485
K-5 Enrollment	433
Pre-School Enrollment	52
Economically Disadvantaged	52.0%



Facility Information

- Built in 1992
- 80,956 square feet
- 19.5-acre site

*Agnor-Hurt Elementary School is part of the **Northern Feeder Pattern**. Students continue to either Burley or Journey Middle School and will graduate from Albemarle High School.*

[^] As reported by the Virginia Department of Education. Includes students who are served in placements outside of ACPS. Does not include MACAA Head Start preschool enrollment.

AGNOR-HURT ELEMENTARY SCHOOL

Home of the Alligators

Agnor-Hurt

22 Adopted vs. 23 Adopted

Expense	18-19 Actuals	19-20 Actuals	20-21 Actuals	21-22 Adopted	22-23 Adopted	Increase	% Increase
Salary	\$3,169,060	\$3,274,675	\$3,150,680	\$3,371,547	\$3,590,164	\$218,617	6.5%
Other Wages	\$125,826	\$107,368	\$229,157	\$73,591	\$74,122	\$531	0.7%
Benefits	\$1,255,036	\$1,290,047	\$1,298,663	\$1,337,665	\$1,356,642	\$18,977	1.4%
Operations	\$82,209	\$81,421	\$75,699	\$66,662	\$76,401	\$9,739	14.6%
Total	\$4,632,132	\$4,753,511	\$4,754,199	\$4,849,465	\$5,097,329	\$247,864	5.1%

State Category Report	18-19 Actuals	19-20 Actuals	20-21 Actuals	21-22 Adopted	22-23 Adopted	Increase	% Increase
Instruction	\$4,342,986	\$4,445,589	\$4,407,715	\$4,474,260	\$4,687,063	\$212,803	4.8%
Admin/Attend&Health	\$55,133	\$59,292	\$63,123	\$61,714	\$70,552	\$8,838	14.3%
Technology	\$57,590	\$77,337	\$78,170	\$81,911	\$82,025	\$114	0.1%
Building Services	\$176,422	\$171,292	\$205,191	\$231,580	\$257,689	\$26,109	11.3%
Total	\$4,632,132	\$4,753,511	\$4,754,199	\$4,849,465	\$5,097,329	\$247,864	5.1%

FTE Summary	21-22 FTE	22-23 FTE
<input type="checkbox"/> Instruction	57.48	53.47
Assistant Principal	1.00	1.00
Clerical	2.00	2.00
Principal	1.00	1.00
Teacher^	40.25	40.73
Teaching Assistant	13.23	8.74
<input type="checkbox"/> Admin/Attend&Health	1.00	1.00
Nurse	1.00	1.00
<input type="checkbox"/> Technology	1.00	1.00
Other Technical	0.50	0.50
Teacher^	0.50	0.50
<input type="checkbox"/> Building Services	4.50	4.50
Custodial	4.50	4.50
Total	63.98	59.97

Adjusted FTE^^	55.1	54.1
-----------------------	-------------	-------------

^Positions included within the Teacher category are detailed in Section G – Staffing Allocations.

^^ Teaching Assistants (TAs) are allocated at a 3 TA to 1 Teacher ratio. This adjusted number is the FTE allocation to the school.

BAKER-BUTLER ELEMENTARY SCHOOL

Home of the Bears

Baker-Butler Elementary

General School Information

- Grades Served: PK-5
- Address: 2740 Proffit Road, Charlottesville, VA 22911
- Phone: 434-974-7777
- Principal: Seth Kennard

Baker-Butler Elementary School is a 2020 United States Department of Education Blue Ribbon School where teachers are striving to create personalized learning experiences for students through engaging, passion-based, and data-informed approaches for instruction. Staff build individual relationships with students and families, and they utilize common pre- and post-assessments to ensure that each child is appropriately challenged, supported, and empowered in their educational journey. Professional development for teachers focuses on:

1. The effective use of Professional Learning Communities to better identify and monitor student performance levels with curricular expectations;
2. Best practices for Culturally Responsive Teaching and Science of Reading; and
3. Short and long-term Responsive Classroom goals and strategies.



Seth Kennard
Principal
2019-Present

Student Enrollment: Historical Fall Membership[^]

	2019-2020	2020-2021	2021-2022
Total Enrollment	684	635	681
Students with Disabilities	13.3%	12.3%	11.7%
English Learners	10.5%	12.1%	14.0%
Economically Disadvantaged	25.1%	26.8%	23.8%

FY 2022-23 Budget Factors

Projected	
Total Enrollment	707
K-5 Enrollment	695
Pre-School Enrollment	12
Economically Disadvantaged	25.5%



Facility Information

- Built in 2002
- 91,576 square feet
- 55.0-acre site

*Baker-Butler Elementary School is part of the **Northern Feeder Pattern**. Students continue to Lakeside Middle School and will graduate from Albemarle High School.*

[^] As reported by the Virginia Department of Education. Includes students who are served in placements outside of ACPS.

BAKER-BUTLER ELEMENTARY SCHOOL

Home of the Bears

Baker-Butler

22 Adopted vs. 23 Adopted

Expense	18-19 Actuals	19-20 Actuals	20-21 Actuals	21-22 Adopted	22-23 Adopted	Increase	% Increase
Salary	\$3,950,827	\$4,138,692	\$4,254,282	\$4,726,764	\$5,009,055	\$282,291	6.0%
Other Wages	\$127,690	\$208,561	\$192,349	\$125,359	\$132,812	\$7,453	5.9%
Benefits	\$1,556,738	\$1,580,647	\$1,671,235	\$1,801,276	\$1,964,639	\$163,363	9.1%
Operations	\$87,921	\$86,817	\$118,223	\$98,466	\$108,160	\$9,694	9.8%
Total	\$5,723,175	\$6,014,717	\$6,236,089	\$6,751,865	\$7,214,666	\$462,801	6.9%

State Category Report	18-19 Actuals	19-20 Actuals	20-21 Actuals	21-22 Adopted	22-23 Adopted	Increase	% Increase
Instruction	\$5,420,368	\$5,672,772	\$5,903,999	\$6,342,255	\$6,766,617	\$424,362	6.7%
Admin/Attend&Health	\$51,259	\$55,224	\$30,846	\$52,556	\$60,635	\$8,079	15.4%
Technology	\$62,361	\$93,170	\$81,663	\$101,630	\$100,107	(\$1,523)	-1.5%
Building Services	\$189,188	\$193,551	\$219,580	\$255,424	\$287,307	\$31,883	12.5%
Total	\$5,723,175	\$6,014,717	\$6,236,089	\$6,751,865	\$7,214,666	\$462,801	6.9%

FTE Summary	21-22 FTE	22-23 FTE
Instruction	89.06	81.10
Assistant Principal	1.00	2.00
Clerical	3.50	3.17
Principal	1.00	1.00
Teacher^	60.17	59.63
Teaching Assistant	23.39	15.30
Admin/Attend&Health	1.00	1.00
Nurse	1.00	1.00
Technology	1.20	1.10
Other Technical	0.60	0.50
Teacher^	0.60	0.60
Building Services	5.25	5.25
Custodial	5.25	5.25
Total	96.51	88.45

Adjusted FTE^^	80.8	78.2
-----------------------	-------------	-------------

^Positions included within the Teacher category are detailed in Section G – Staffing Allocations.

^^ Teaching Assistants (TAs) are allocated at a 3 TA to 1 Teacher ratio. This adjusted number is the FTE allocation to the school.

BROADUS WOOD ELEMENTARY SCHOOL

Home of the Bobcats

Broadus Wood Elementary

General School Information

- Grades Served: PK-5
- Address: 185 Buck Mountain Road, Earlysville, VA 22936
- Phone: 434-973-3865
- Principal: Amy Morris

Broadus Wood Elementary School is a community of learners and learning through relationships, relevance, and rigor, one student at a time. We are committed to creating a culture of high expectations for every student and removing practices that perpetuate the achievement gap.



Amy Morris
Principal
2016-Present

Student Enrollment: Historical Fall Membership[^]

	2019-2020	2020-2021	2021-2022
Total Enrollment	287	252	259
Students with Disabilities	14.6%	11.5%	12.7%
English Learners	1.0%	1.2%	1.9%
Economically Disadvantaged	14.3%	16.7%	16.6%

FY 2022-23 Budget Factors

Projected	
Total Enrollment	283
K-5 Enrollment	263
Pre-School Enrollment	20
Economically Disadvantaged	15.7%



Facility Information

- Built in 1936
- 49,852 square feet
- 11.7-acre site

*Broadus Wood Elementary School is part of the **Northern Feeder Pattern**. Students continue to Journey Middle School and will graduate from Albemarle High School.*

[^] As reported by the Virginia Department of Education. Includes students who are served in placements outside of ACPS.

BROADUS WOOD ELEMENTARY SCHOOL

Home of the Bobcats

Broadus Wood

22 Adopted vs. 23 Adopted

Expense	18-19 Actuals	19-20 Actuals	20-21 Actuals	21-22 Adopted	22-23 Adopted	Increase	% Increase
Salary	\$1,780,902	\$1,932,944	\$1,885,522	\$2,107,191	\$2,402,825	\$295,634	14.0%
Other Wages	\$55,648	\$43,241	\$92,991	\$44,503	\$41,779	(\$2,724)	-6.1%
Benefits	\$714,313	\$778,171	\$804,171	\$844,237	\$998,641	\$154,404	18.3%
Operations	\$52,879	\$46,283	\$39,074	\$68,729	\$56,849	(\$11,880)	-17.3%
Total	\$2,603,742	\$2,800,640	\$2,821,758	\$3,064,660	\$3,500,094	\$435,434	14.2%

State Category Report	18-19 Actuals	19-20 Actuals	20-21 Actuals	21-22 Adopted	22-23 Adopted	Increase	% Increase
Instruction	\$2,361,391	\$2,597,371	\$2,602,393	\$2,846,602	\$3,206,824	\$360,222	12.7%
Admin/Attend&Health	\$51,150	\$52,410	\$53,985	\$55,076	\$60,808	\$5,732	10.4%
Technology	\$47,238	\$52,450	\$56,314	\$54,516	\$58,070	\$3,554	6.5%
Building Services	\$143,963	\$98,409	\$109,066	\$108,466	\$174,392	\$65,926	60.8%
Total	\$2,603,742	\$2,800,640	\$2,821,758	\$3,064,660	\$3,500,094	\$435,434	14.2%

FTE Summary	21-22 FTE	22-23 FTE
<input type="checkbox"/> Instruction	36.35	38.31
Assistant Principal		1.00
Clerical	2.00	2.00
Principal	1.00	1.00
Teacher^	27.28	25.55
Teaching Assistant	6.07	8.76
<input type="checkbox"/> Admin/Attend&Health	1.00	1.00
Nurse	1.00	1.00
<input type="checkbox"/> Technology	0.70	0.60
Other Technical	0.20	0.20
Teacher^	0.50	0.40
<input type="checkbox"/> Building Services	2.00	3.00
Custodial	2.00	3.00
Total	40.05	42.91

Adjusted FTE^^	36.0	37.0
-----------------------	-------------	-------------

^Positions included within the Teacher category are detailed in Section G – Staffing Allocations.

^^ Teaching Assistants (TAs) are allocated at a 3 TA to 1 Teacher ratio. This adjusted number is the FTE allocation to the school.

BROWNSVILLE ELEMENTARY SCHOOL

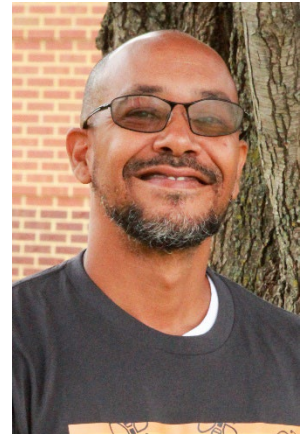
Home of the Bees

Brownsville Elementary

General School Information

- Grades Served: PK-5
- Address: 5870 Rockfish Gap Turnpike, Crozet, VA 22932
- Phone: 434-823-4658
- Principal: Jason Crutchfield

Brownsville Elementary opened in 1966 to serve the public education needs of the Greenwood/Crozet community. The school follows Albemarle County Public School's objectives of the division's strategic plan and its mission for equity. Brownsville students are Safe and Caring Learners. Brownsville is a Responsive Classroom school providing engaging instruction that can be observed through continuous improvement, student leadership opportunities and effective learning partnerships.



Jason Crutchfield
Principal
2016-Present

Student Enrollment: Historical Fall Membership[^]

	2019-2020	2020-2021	2021-2022
Total Enrollment	860	729	756
Students with Disabilities	9.2%	8.8%	9.7%
English Learners	0.9%	1.1%	1.5%
Economically Disadvantaged	10.8%	13.7%	13.1%

FY 2022-23 Budget Factors

Projected	
Total Enrollment	574
K-5 Enrollment	562
Pre-School Enrollment	12
Economically Disadvantaged	16.5%



Facility Information

- Built in 1966
- 90,550 square feet
- 19.5-acre site

*Brownsville Elementary School is part of the **Western Feeder Pattern**. Students continue to Henley Middle School and will graduate from Western Albemarle High School.*

[^] As reported by the Virginia Department of Education. Includes students who are served in placements outside of ACPS.

BROWNSVILLE ELEMENTARY SCHOOL

Home of the Bees

Brownsville

22 Adopted vs. 23 Adopted

Expense	18-19 Actuals	19-20 Actuals	20-21 Actuals	21-22 Adopted	22-23 Adopted	Increase	% Increase
Salary	\$4,183,908	\$4,486,996	\$4,563,022	\$5,117,222	\$3,978,105	(\$1,139,117)	-22.3%
Other Wages	\$195,130	\$186,979	\$184,244	\$147,349	\$114,810	(\$32,539)	-22.1%
Benefits	\$1,707,325	\$1,840,857	\$1,944,945	\$2,129,532	\$1,552,146	(\$577,386)	-27.1%
Operations	\$112,388	\$100,126	\$83,245	\$168,513	\$114,385	(\$54,128)	-32.1%
Total	\$6,198,751	\$6,614,957	\$6,775,456	\$7,562,616	\$5,759,446	(\$1,803,170)	-23.8%

State Category Report	18-19 Actuals	19-20 Actuals	20-21 Actuals	21-22 Adopted	22-23 Adopted	Increase	% Increase
Instruction	\$5,865,979	\$6,222,667	\$6,401,031	\$7,077,863	\$5,209,032	(\$1,868,831)	-26.4%
Admin/Attend&Health	\$56,523	\$58,956	\$61,306	\$62,455	\$71,048	\$8,593	13.8%
Technology	\$71,854	\$137,662	\$96,376	\$149,436	\$165,411	\$15,975	10.7%
Building Services	\$204,395	\$195,671	\$216,742	\$272,862	\$313,955	\$41,093	15.1%
Total	\$6,198,751	\$6,614,957	\$6,775,456	\$7,562,616	\$5,759,446	(\$1,803,170)	-23.8%

FTE Summary	21-22 FTE	22-23 FTE
<input checked="" type="checkbox"/> Instruction	92.95	62.20
Assistant Principal	2.00	1.00
Clerical	3.50	2.50
Principal	1.00	1.00
Teacher^	64.13	44.90
Teaching Assistant	22.32	12.80
<input checked="" type="checkbox"/> Admin/Attend&Health	1.00	1.00
Nurse	1.00	1.00
<input checked="" type="checkbox"/> Technology	1.60	1.60
Other Technical	0.60	0.60
Teacher^	1.00	1.00
<input checked="" type="checkbox"/> Building Services	5.75	5.75
Custodial	5.75	5.75
Total	101.30	70.55

Adjusted FTE^^	86.3	62.0
-----------------------	-------------	-------------

^Positions included within the Teacher category are detailed in Section G – Staffing Allocations.

^^ Teaching Assistants (TAs) are allocated at a 3 TA to 1 Teacher ratio. This adjusted number is the FTE allocation to the school.

A redistricting recommendation has been approved for the 2022-23 school year. The FY 2022/23 FTE allocation and budget presented here represent new boundaries, which moves a projected 219 K-5 students from Brownsville Elementary to Crozet Elementary.

CROZET ELEMENTARY SCHOOL

Home of the Eagles

Crozet Elementary

General School Information

- Grades Served: PK-5
- Address: 1407 Crozet Avenue, Crozet, VA 22932
- Phone: 434-823-4800
- Principal: Gwedette Crummie

Crozet Elementary holds these truths to be self-evident: that all students are created equal. Our objective is to empower our students to learn creatively and innovatively to discover their interests/talents and grow into being lifelong contributors to our local and global community. We optimize our local community resources and business partnerships in Crozet/White Hall and surrounding areas of Albemarle County to provide our students with authentic, inspiring and enriching learning experiences in order to reach our objective.

With this spirit and belief, Crozet Elementary makes every effort to know each student; nurture their mental and physical well-being, and maximize their potential and talents through culturally responsive teaching, Responsive Classroom approach, project/problem/passion-based learning, and environmental stewardship.



Gwedette Crummie
Principal
2010-Present

Student Enrollment: Historical Fall Membership[^]

	2019-2020	2020-2021	2021-2022
Total Enrollment	342	327	324
Students with Disabilities	8.8%	8.9%	10.2%
English Learners	3.2%	3.4%	2.5%
Economically Disadvantaged	23.1%	24.5%	18.2%

FY 2022-23 Budget Factors

Projected	
Total Enrollment	576
K-5 Enrollment	558
Pre-School Enrollment	18
Economically Disadvantaged	12.1%



Facility Information

- Built in 1990
- 54,142 square feet
- 21.2-acre site

*Crozet Elementary School is part of the **Western Feeder Pattern**. Students continue to Henley Middle School and will graduate from Western Albemarle High School.*

[^] As reported by the Virginia Department of Education. Includes students who are served in placements outside of ACPS. Does not include MACAA Head Start preschool enrollment.

CROZET ELEMENTARY SCHOOL

Home of the Eagles

Crozet

22 Adopted vs. 23 Adopted

Expense	18-19 Actuals	19-20 Actuals	20-21 Actuals	21-22 Adopted	22-23 Adopted	Increase	% Increase
Salary	\$2,333,132	\$2,223,988	\$2,144,835	\$2,454,822	\$3,768,074	\$1,313,252	53.5%
Other Wages	\$64,662	\$61,493	\$92,611	\$71,832	\$92,293	\$20,461	28.5%
Benefits	\$903,722	\$814,012	\$816,224	\$902,278	\$1,484,632	\$582,354	64.5%
Operations	\$58,472	\$53,845	\$66,744	\$77,711	\$125,794	\$48,083	61.9%
Total	\$3,359,989	\$3,153,338	\$3,120,415	\$3,506,643	\$5,470,793	\$1,964,150	56.0%

State Category Report	18-19 Actuals	19-20 Actuals	20-21 Actuals	21-22 Adopted	22-23 Adopted	Increase	% Increase
Instruction	\$3,080,253	\$2,867,829	\$2,833,590	\$3,205,490	\$5,001,080	\$1,795,590	56.0%
Admin/Attend&Health	\$52,881	\$59,285	\$50,636	\$50,936	\$57,177	\$6,241	12.3%
Technology	\$80,783	\$77,861	\$82,277	\$83,741	\$103,182	\$19,441	23.2%
Building Services	\$146,073	\$148,363	\$153,911	\$166,476	\$309,354	\$142,878	85.8%
Total	\$3,359,989	\$3,153,338	\$3,120,415	\$3,506,643	\$5,470,793	\$1,964,150	56.0%

FTE Summary	21-22 FTE	22-23 FTE
<input type="checkbox"/> Instruction	42.15	55.55
Assistant Principal	1.00	1.00
Clerical	2.00	2.50
Principal	1.00	1.00
Teacher^	28.30	44.75
Teaching Assistant	9.85	6.30
<input type="checkbox"/> Admin/Attend&Health	1.00	1.00
Nurse	1.00	1.00
<input type="checkbox"/> Technology	0.90	1.00
Other Technical	0.40	0.40
Teacher^	0.50	0.60
<input type="checkbox"/> Building Services	3.50	5.35
Custodial	3.50	5.35
Total	47.55	62.90

Adjusted FTE^^	41.0	58.7
-----------------------	-------------	-------------

^Positions included within the Teacher category are detailed in Section G – Staffing Allocations.

^^ Teaching Assistants (TAs) are allocated at a 3 TA to 1 Teacher ratio. This adjusted number is the FTE allocation to the school.

A redistricting recommendation has been approved for the 2022-23 school year. The FY 2022/23 FTE allocation and budget presented here represent new boundaries, which moves a projected 219 K-5 students from Brownsville Elementary to Crozet Elementary.

GREER ELEMENTARY SCHOOL

Home of the Geckos

Greer Elementary

General School Information

- Grades Served: PK-5
- Address: 190 Lambs Lane, Charlottesville, VA 22901
- Phone: 434-973-8371
- Principal: Stephen Saunders

At Greer, we will change lives and our community. We will reach and challenge every student, every day. Just as we have become leaders in utilizing the Responsive Classroom approach, our goal is to become leaders in eliminating achievement gaps and providing equitable outcomes and opportunities for all students.



Steve Saunders
Principal
2019-Present

Student Enrollment: Historical Fall Membership[^]

	2019-2020	2020-2021	2021-2022
Total Enrollment	520	469	480
Students with Disabilities	15.6%	13.6%	12.5%
English Learners	33.8%	34.5%	33.5%
Economically Disadvantaged	71.0%	63.3%	53.8%

FY 2022-23 Budget Factors

Projected

Total Enrollment	506
K-5 Enrollment	452
Pre-School Enrollment	54
Economically Disadvantaged	71.5%



Facility Information

- Built in 1974
- 99,258 square feet
- 15.0-acre site

*Greer Elementary School is part of the **Northern Feeder Pattern**. Students continue to Journey Middle School and will graduate from Albemarle High School.*

[^] As reported by the Virginia Department of Education. Includes students who are served in placements outside of ACPS. Does not include MACAA Head Start preschool enrollment.

GREER ELEMENTARY SCHOOL

Home of the Geckos

Greer

22 Adopted vs. 23 Adopted

Expense	18-19 Actuals	19-20 Actuals	20-21 Actuals	21-22 Adopted	22-23 Adopted	Increase	% Increase
Salary	\$3,806,552	\$3,960,074	\$3,642,080	\$3,951,653	\$4,073,872	\$122,219	3.1%
Other Wages	\$120,691	\$108,043	\$172,629	\$78,633	\$81,194	\$2,561	3.3%
Benefits	\$1,447,690	\$1,493,722	\$1,462,562	\$1,499,263	\$1,547,432	\$48,169	3.2%
Operations	\$80,409	\$68,264	\$88,922	\$97,518	\$100,083	\$2,565	2.6%
Total	\$5,455,343	\$5,630,102	\$5,366,192	\$5,627,067	\$5,802,581	\$175,514	3.1%

State Category Report	18-19 Actuals	19-20 Actuals	20-21 Actuals	21-22 Adopted	22-23 Adopted	Increase	% Increase
Instruction	\$5,114,943	\$5,298,867	\$5,051,936	\$5,248,001	\$5,399,723	\$151,722	2.9%
Admin/Attend&Health	\$45,787	\$46,785	\$47,137	\$47,567	\$53,817	\$6,250	13.1%
Technology	\$75,924	\$83,014	\$51,065	\$100,601	\$83,046	(\$17,555)	-17.5%
Building Services	\$218,689	\$201,436	\$216,054	\$230,898	\$265,995	\$35,097	15.2%
Total	\$5,455,343	\$5,630,102	\$5,366,192	\$5,627,067	\$5,802,581	\$175,514	3.1%

FTE Summary	21-22 FTE	22-23 FTE
Instruction	70.01	63.34
Assistant Principal	1.00	1.00
Clerical	2.50	2.50
Principal	1.00	1.00
Teacher^	49.11	48.44
Teaching Assistant	16.40	10.40
Admin/Attend&Health	1.00	1.00
Nurse	1.00	1.00
Technology	1.10	1.00
Other Technical	0.60	0.40
Teacher^	0.50	0.60
Building Services	4.75	4.75
Custodial	4.75	4.75
Total	76.86	70.09

Adjusted FTE^^	65.9	63.1
-----------------------	-------------	-------------

^Positions included within the Teacher category are detailed in Section G – Staffing Allocations.

^^ Teaching Assistants (TAs) are allocated at a 3 TA to 1 Teacher ratio. This adjusted number is the FTE allocation to the school.

HOLLYMEAD ELEMENTARY SCHOOL

Home of the Hornets

Hollymead Elementary

General School Information

- Grades Served: PK-5
- Address: 2775 Powell Creek Drive Charlottesville, VA 22911
- Phone: 434-973-8301
- Principal: Craig Dommer

Hollymead is a PK-5 elementary school that utilizes student curiosity and an arts integrated curriculum to improve academic and social outcomes for all students. Hollymead, along with its strong and diverse community, creates and expands partnerships, including those with local businesses and our families of military personnel.



Craig Dommer
Principal
2018-Present

Student Enrollment: Historical Fall Membership[^]

	2019-2020	2020-2021	2021-2022
Total Enrollment	429	349	339
Students with Disabilities	14.2%	15.2%	15.3%
English Learners	9.3%	9.7%	6.8%
Economically Disadvantaged	13.1%	13.2%	12.4%

FY 2022-23 Budget Factors

Projected	
Total Enrollment	373
K-5 Enrollment	343
Pre-School Enrollment	30
Economically Disadvantaged	12.0%



Facility Information

- Built in 1972
- 66,437 square feet
- 20.1-acre site

*Hollymead Elementary School is part of the **Northern Feeder Pattern**. Students continue to Lakeside Middle School and will graduate from Albemarle High School.*

[^] As reported by the Virginia Department of Education. Includes students who are served in placements outside of ACPS. Does not include MACAA Head Start preschool enrollment.

HOLLYMEAD ELEMENTARY SCHOOL

Home of the Hornets

Hollymead

22 Adopted vs. 23 Adopted

Expense	18-19 Actuals	19-20 Actuals	20-21 Actuals	21-22 Adopted	22-23 Adopted	Increase	% Increase
Salary	\$2,872,251	\$2,787,968	\$2,715,379	\$2,974,935	\$2,839,752	(\$135,183)	-4.5%
Other Wages	\$72,346	\$82,139	\$95,633	\$64,461	\$62,328	(\$2,133)	-3.3%
Benefits	\$1,134,356	\$1,078,986	\$1,077,162	\$1,143,934	\$1,110,637	(\$33,297)	-2.9%
Operations	\$80,205	\$48,564	\$78,810	\$95,235	\$72,866	(\$22,369)	-23.5%
Total	\$4,159,159	\$3,997,658	\$3,966,983	\$4,278,565	\$4,085,583	(\$192,982)	-4.5%

State Category Report	18-19 Actuals	19-20 Actuals	20-21 Actuals	21-22 Adopted	22-23 Adopted	Increase	% Increase
Instruction	\$3,806,597	\$3,616,096	\$3,668,260	\$3,958,764	\$3,752,483	(\$206,281)	-5.2%
Admin/Attend&Health	\$89,676	\$92,511	\$59,447	\$43,724	\$48,797	\$5,073	11.6%
Technology	\$45,058	\$36,647	\$61,248	\$64,188	\$54,872	(\$9,316)	-14.5%
Building Services	\$217,827	\$252,404	\$178,028	\$211,889	\$229,431	\$17,542	8.3%
Total	\$4,159,159	\$3,997,658	\$3,966,983	\$4,278,565	\$4,085,583	(\$192,982)	-4.5%

FTE Summary	21-22 FTE	22-23 FTE
Instruction	51.36	42.66
Assistant Principal	1.00	1.00
Clerical	2.00	2.00
Principal	1.00	1.00
Teacher^	34.88	30.38
Teaching Assistant	12.48	8.28
Admin/Attend&Health	1.00	1.00
Nurse	1.00	1.00
Technology	0.90	0.70
Other Technical	0.40	0.40
Teacher^	0.50	0.30
Building Services	4.00	4.00
Custodial	4.00	4.00
Total	57.26	48.36

Adjusted FTE^^	48.9	42.8
-----------------------	-------------	-------------

^Positions included within the Teacher category are detailed in Section G – Staffing Allocations.

^^ Teaching Assistants (TAs) are allocated at a 3 TA to 1 Teacher ratio. This adjusted number is the FTE allocation to the school.

MERIWETHER LEWIS ELEMENTARY SCHOOL

Home of the Bluebirds

Meriwether Lewis Elementary

General School Information

- Grades Served: K-5
- Address: 1610 Owensville Road, Charlottesville, VA 22901
- Phone: 434-293-9304
- Principal: Jennifer Underwood

Meriwether Lewis Elementary School is a caring community that lifts and supports one another. Our staff is responsive to the individual needs of students and works to create a warm, inclusive classroom. To accomplish this, we work to balance the socio-emotional, physical, and academic needs of every child. More specifically, the Meriwether Lewis staff is dedicated to the study of Culturally Responsive Teaching, Responsive Classroom, and differentiated instruction. At the heart of the work is the ongoing development of the PLC model where teacher teams engage in the Plan-Do-Study-Act cycle on a regular basis to respond to student assessments and adjust instruction as needed.



Jennifer Underwood
Principal
2021-Present

Student Enrollment: Historical Fall Membership[^]

	2019-2020	2020-2021	2021-2022
Total Enrollment	404	323	321
Students with Disabilities	9.9%	8.7%	10.0%
English Learners	1.5%	1.2%	1.2%
Economically Disadvantaged	10.4%	9.6%	7.2%

FY 2022-23 Budget Factors

Projected	
Total Enrollment	333
K-5 Enrollment	333
Pre-School Enrollment	0
Economically Disadvantaged	9.8%



Facility Information

- Built in 1988
- 56,450 square feet
- 17.7-acre site

*Meriwether Lewis Elementary School is part of the **Western Feeder Pattern**. Students continue to Henley Middle School and will graduate from Western Albemarle High School.*

[^] As reported by the Virginia Department of Education. Includes students who are served in placements outside of ACPS.

MERIWETHER LEWIS ELEMENTARY SCHOOL

Home of the Bluebirds

Meriwether Lewis

22 Adopted vs. 23 Adopted

Expense	18-19 Actuals	19-20 Actuals	20-21 Actuals	21-22 Adopted	22-23 Adopted	Increase	% Increase
Salary	\$2,382,352	\$2,564,288	\$2,184,679	\$2,432,355	\$2,405,480	(\$26,875)	-1.1%
Other Wages	\$109,873	\$76,475	\$81,908	\$75,724	\$75,416	(\$308)	-0.4%
Benefits	\$982,973	\$1,030,475	\$901,956	\$995,307	\$950,751	(\$44,556)	-4.5%
Operations	\$85,644	\$58,062	\$45,808	\$112,061	\$73,944	(\$38,117)	-34.0%
Total	\$3,560,842	\$3,729,299	\$3,214,351	\$3,615,447	\$3,505,591	(\$109,856)	-3.0%

State Category Report	18-19 Actuals	19-20 Actuals	20-21 Actuals	21-22 Adopted	22-23 Adopted	Increase	% Increase
Instruction	\$3,305,444	\$3,474,138	\$2,953,194	\$3,335,750	\$3,165,848	(\$169,902)	-5.1%
Admin/Attend&Health	\$49,505	\$49,531	\$50,868	\$51,966	\$59,047	\$7,081	13.6%
Technology	\$70,998	\$62,306	\$60,787	\$63,072	\$96,624	\$33,552	53.2%
Building Services	\$134,896	\$143,324	\$149,501	\$164,659	\$184,072	\$19,413	11.8%
Total	\$3,560,842	\$3,729,299	\$3,214,351	\$3,615,447	\$3,505,591	(\$109,856)	-3.0%

FTE Summary	21-22 FTE	22-23 FTE
<input type="checkbox"/> Instruction	40.66	37.46
Assistant Principal	1.00	1.00
Clerical	2.00	2.00
Principal	1.00	1.00
Teacher^	30.36	26.35
Teaching Assistant	6.30	7.11
<input type="checkbox"/> Admin/Attend&Health	1.00	1.00
Nurse	1.00	1.00
<input type="checkbox"/> Technology	0.75	1.10
Other Technical	0.25	0.60
Teacher^	0.50	0.50
<input type="checkbox"/> Building Services	3.00	3.00
Custodial	3.00	3.00
Total	45.41	42.56

Adjusted FTE^^	41.2	37.8
-----------------------	-------------	-------------

^Positions included within the Teacher category are detailed in Section G – Staffing Allocations.

^^ Teaching Assistants (TAs) are allocated at a 3 TA to 1 Teacher ratio. This adjusted number is the FTE allocation to the school.

MOUNTAIN VIEW ELEMENTARY SCHOOL

Home of the Colts

Mountain View Elementary

General School Information

- Grades Served: PK-5
- Address: 1757 Avon Street Extended, Charlottesville, VA 22902
- Phone: 434-293-7455
- Principal: Cyndi Wells

Mountain View Elementary is a PK-5 school where all staff works together to improve academic, social/emotional, and personal outcomes for all students. Our updated vision and mission statements reflect our commitment to equity through learning partnerships. Our vision is "Where EVERY LEARNER is empowered to actively and confidently thrive every day." Our mission is for all students to achieve academic success to their best ability. Therefore, we embrace our diverse students and families. Together we value antiracism, bilingualism, and multiculturalism. While our school name, vision, and mission have changed over the past few years, our commitment to our students, families, and each other has not. Student Enrollment: Fall Membership



Cyndi Wells
Principal
2019-Present

Student Enrollment: Historical Fall Membership[^]

	2019-2020	2020-2021	2021-2022
Total Enrollment	770	692	724
Students with Disabilities	15.3%	12.6%	12.7%
English Learners	20.3%	19.7%	18.5%
Economically Disadvantaged	41.2%	41.6%	38.4%

FY 2022-23 Budget Factors

Projected	
Total Enrollment	758
K-5 Enrollment	710
Pre-School Enrollment	48
Economically Disadvantaged	42.6%



Facility Information

- Built in 1990
- 92,307 square feet
- 16.1-acre site

*Mountain View Elementary School is part of the **Southern Feeder Pattern**. Students continue to Burley or Walton Middle School and will graduate from Monticello High School.*

[^] As reported by the Virginia Department of Education. Includes students who are served in placements outside of ACPS.

MOUNTAIN VIEW ELEMENTARY SCHOOL

Home of the Colts

Mountain View

22 Adopted vs. 23 Adopted

Expense	18-19 Actuals	19-20 Actuals	20-21 Actuals	21-22 Adopted	22-23 Adopted	Increase	% Increase
Salary	\$4,523,137	\$4,909,910	\$4,647,510	\$5,268,857	\$5,814,826	\$545,969	10.4%
Other Wages	\$107,474	\$156,568	\$340,635	\$124,675	\$127,546	\$2,871	2.3%
Benefits	\$1,783,972	\$1,929,086	\$1,935,627	\$2,159,531	\$2,363,950	\$204,419	9.5%
Operations	\$88,102	\$103,241	\$101,863	\$91,806	\$119,206	\$27,400	29.8%
Total	\$6,502,684	\$7,098,804	\$7,025,635	\$7,644,869	\$8,425,528	\$780,659	10.2%

State Category Report	18-19 Actuals	19-20 Actuals	20-21 Actuals	21-22 Adopted	22-23 Adopted	Increase	% Increase
Instruction	\$6,168,448	\$6,749,641	\$6,716,124	\$7,248,506	\$7,993,703	\$745,197	10.3%
Admin/Attend&Health	\$27,966	\$58,919	\$62,914	\$60,499	\$68,889	\$8,390	13.9%
Technology	\$73,655	\$93,997	\$50,676	\$102,122	\$74,529	(\$27,593)	-27.0%
Building Services	\$232,615	\$196,247	\$195,921	\$233,742	\$288,407	\$54,665	23.4%
Total	\$6,502,684	\$7,098,804	\$7,025,635	\$7,644,869	\$8,425,528	\$780,659	10.2%

FTE Summary	21-22 FTE	22-23 FTE
Instruction	95.75	94.56
Assistant Principal	2.00	2.00
Clerical	3.50	3.50
Principal	1.00	1.00
Teacher^	68.49	70.25
Teaching Assistant	20.76	17.81
Admin/Attend&Health	1.00	1.00
Nurse	1.00	1.00
Technology	1.20	0.80
Other Technical	0.60	
Teacher^	0.60	0.80
Building Services	4.46	5.00
Custodial	4.46	5.00
Total	102.41	101.36

Adjusted FTE^^	88.5	89.4
-----------------------	-------------	-------------

^Positions included within the Teacher category are detailed in Section G – Staffing Allocations.

^^ Teaching Assistants (TAs) are allocated at a 3 TA to 1 Teacher ratio. This adjusted number is the FTE allocation to the school.

MURRAY ELEMENTARY SCHOOL

Home of the Mustangs

Murray Elementary

General School Information

- Grades Served: PK-5
- Address: 3251 Morgantown Road, Charlottesville, VA 22903
- Phone: 434-977-4599
- Principal: C'ta DeLaurier

Murray Elementary School, a PK-5 elementary school, works daily to develop high levels of both cognitive growth and social-emotional well-being of the students in our learning community. We collectively own student growth and are committed to developing a growth mindset in children. We develop strong relationships with each child as well as teach children how to develop positive relationships with others.



C'ta DeLaurier
Principal
2021-Present

Student Enrollment: Historical Fall Membership[^]

	2019-2020	2020-2021	2021-2022
Total Enrollment	256	235	267
Students with Disabilities	9.4%	11.5%	9.7%
English Learners	2.3%	2.6%	3.4%
Economically Disadvantaged	7.0%	8.1%	9.0%

FY 2022-23 Budget Factors

Projected	
Total Enrollment	284
K-5 Enrollment	272
Pre-School Enrollment	12
Economically Disadvantaged	7.0%



Facility Information

- Built in 1960
- 42,057 square feet
- 20.9-acre site

*Murray Elementary School is part of the **Western Feeder Pattern**. Students continue to Henley Middle School and will graduate from Western Albemarle High School.*

[^] As reported by the Virginia Department of Education. Includes students who are served in placements outside of ACPS.

MURRAY ELEMENTARY SCHOOL

Home of the Mustangs

Murray

22 Adopted vs. 23 Adopted

Expense	18-19 Actuals	19-20 Actuals	20-21 Actuals	21-22 Adopted	22-23 Adopted	Increase	% Increase
Salary	\$1,862,493	\$1,933,003	\$1,894,130	\$2,138,951	\$2,523,485	\$384,534	18.0%
Other Wages	\$43,985	\$30,097	\$72,359	\$42,288	\$44,834	\$2,546	6.0%
Benefits	\$721,054	\$760,033	\$751,423	\$870,333	\$1,002,609	\$132,276	15.2%
Operations	\$50,205	\$48,014	\$40,736	\$62,188	\$49,273	(\$12,915)	-20.8%
Total	\$2,677,737	\$2,771,147	\$2,758,647	\$3,113,760	\$3,620,201	\$506,441	16.3%

State Category Report	18-19 Actuals	19-20 Actuals	20-21 Actuals	21-22 Adopted	22-23 Adopted	Increase	% Increase
Instruction	\$2,459,753	\$2,516,001	\$2,529,975	\$2,831,788	\$3,323,976	\$492,188	17.4%
Admin/Attend&Health	\$47,840	\$77,367	\$43,167	\$48,772	\$48,879	\$107	0.2%
Technology	\$35,521	\$67,352	\$46,510	\$76,592	\$74,248	(\$2,344)	-3.1%
Building Services	\$134,623	\$110,427	\$138,995	\$156,608	\$173,098	\$16,490	10.5%
Total	\$2,677,737	\$2,771,147	\$2,758,647	\$3,113,760	\$3,620,201	\$506,441	16.3%

FTE Summary	21-22 FTE	22-23 FTE
<input type="checkbox"/> Instruction	37.64	42.15
Assistant Principal		1.00
Clerical	2.00	2.00
Principal	1.00	1.00
Teacher^	23.44	24.95
Teaching Assistant	11.20	13.20
<input type="checkbox"/> Admin/Attend&Health	1.00	1.00
Nurse	1.00	1.00
<input type="checkbox"/> Technology	0.80	0.80
Other Technical	0.30	0.40
Teacher^	0.50	0.40
<input type="checkbox"/> Building Services	3.00	3.00
Custodial	3.00	3.00
Total	42.44	46.95

Adjusted FTE^^	34.9	38.1
-----------------------	-------------	-------------

^Positions included within the Teacher category are detailed in Section G – Staffing Allocations.

^^ Teaching Assistants (TAs) are allocated at a 3 TA to 1 Teacher ratio. This adjusted number is the FTE allocation to the school.

RED HILL ELEMENTARY SCHOOL

Home of the Moos

Red Hill Elementary

General School Information

- Grades Served: PK-5
- Address: 3901 Red Hill School Road, North Garden, VA 22959
- Phone: 434-293-5332
- Principal: Nancy McCullen

Together, the entire Red Hill community engages the mind and heart of each student to become a lifelong learner with the necessary skills to be a contributing member of our world. Through the development of curiosity, imagination, love of learning, respect for diversity, and intellect, all learners reach their highest potential.



Nancy McCullen
Principal
2018-Present

Student Enrollment: Historical Fall Membership[^]

	2019-2020	2020-2021	2021-2022
Total Enrollment	214	169	189
Students with Disabilities	18.7%	18.9%	16.9%
English Learners	5.6%	4.7%	5.8%
Economically Disadvantaged	52.8%	48.5%	43.4%

FY 2022-23 Budget Factors

Projected

Total Enrollment	189
K-5 Enrollment	171
Pre-School Enrollment	18
Economically Disadvantaged	53.8%



Facility Information

- Built in 1973
- 40,085 square feet
- 10.9-acre site

*Red Hill Elementary School is part of the **Southern Feeder Pattern**. Students continue to Walton Middle School and will graduate from Monticello High School.*

[^] As reported by the Virginia Department of Education. Includes students who are served in placements outside of ACPS.

RED HILL ELEMENTARY SCHOOL

Home of the Moos

Red Hill

22 Adopted vs. 23 Adopted

Expense	18-19 Actuals	19-20 Actuals	20-21 Actuals	21-22 Adopted	22-23 Adopted	Increase	% Increase
Salary	\$1,569,633	\$1,569,243	\$1,350,215	\$1,523,685	\$1,741,879	\$218,194	14.3%
Other Wages	\$45,451	\$27,350	\$75,351	\$60,784	\$59,874	(\$910)	-1.5%
Benefits	\$643,696	\$604,646	\$566,189	\$603,088	\$709,493	\$106,405	17.6%
Operations	\$27,983	\$25,837	\$32,620	\$63,454	\$43,439	(\$20,015)	-31.5%
Total	\$2,286,763	\$2,227,076	\$2,024,374	\$2,251,011	\$2,554,685	\$303,674	13.5%

State Category Report	18-19 Actuals	19-20 Actuals	20-21 Actuals	21-22 Adopted	22-23 Adopted	Increase	% Increase
Instruction	\$2,075,283	\$2,022,557	\$1,830,923	\$2,043,808	\$2,318,133	\$274,325	13.4%
Admin/Attend&Health	\$58,125	\$64,867	\$56,019	\$59,389	\$68,613	\$9,224	15.5%
Technology	\$55,257	\$39,570	\$43,949	\$47,896	\$47,712	(\$184)	-0.4%
Building Services	\$98,098	\$100,082	\$93,482	\$99,918	\$120,227	\$20,309	20.3%
Total	\$2,286,763	\$2,227,076	\$2,024,374	\$2,251,011	\$2,554,685	\$303,674	13.5%

FTE Summary	21-22 FTE	22-23 FTE
<input type="checkbox"/> Instruction	26.15	26.31
Assistant Principal		1.00
Clerical	2.00	2.00
Principal	1.00	1.00
Teacher^	18.77	18.25
Teaching Assistant	4.38	4.06
<input type="checkbox"/> Admin/Attend&Health	1.00	1.00
Nurse	1.00	1.00
<input type="checkbox"/> Technology	0.60	0.60
Other Technical	0.20	0.60
Teacher^	0.40	
<input type="checkbox"/> Building Services	2.00	2.25
Custodial	2.00	2.25
Total	29.75	30.16

Adjusted FTE^^	26.8	27.4
-----------------------	-------------	-------------

^Positions included within the Teacher category are detailed in Section G – Staffing Allocations.

^^ Teaching Assistants (TAs) are allocated at a 3 TA to 1 Teacher ratio. This adjusted number is the FTE allocation to the school.

SCOTTSVILLE ELEMENTARY SCHOOL

Home of the Tigers

Scottsville Elementary

General School Information

- Grades Served: PK-5
- Address: 7868 Scottsville Road, Scottsville, VA 24590
- Phone: 434-286-2441
- Principal: Staci England

Scottsville Elementary School is a place where students and staff work together to learn and grow, just like the trees and other wildlife surrounding our school. Following our motto, "Many Tigers, One Roar!" we work to ensure that everyone here knows that they are an important part of the Tiger Team. We engage every student through their interests as we empower them to own their learning. We have developed relationships with the Town of Scottsville, B.F. Yancey Community Center, and several local churches to help in our shared mission of partnering with families to educate children. We are especially proud of the amazing work that our staff, students, and families continue to do under the challenging circumstances of a pandemic. Our Tiger Team is extraordinary!



Staci England
Principal
2018-Present

Student Enrollment: Historical Fall Membership[^]

	2019-2020	2020-2021	2021-2022
Total Enrollment	231	221	216
Students with Disabilities	13.4%	11.3%	13.9%
English Learners	0.9%	2.7%	3.2%
Economically Disadvantaged	44.6%	45.2%	45.8%

FY 2022-23 Budget Factors

Projected	
Total Enrollment	223
K-5 Enrollment	205
Pre-School Enrollment	18
Economically Disadvantaged	46.0%



Facility Information

- Built in 1974
- 50,097 square feet
- 15.0-acre site

*Scottsville Elementary School is part of the **Southern Feeder Pattern**. Students continue to Walton Middle School and will graduate from Monticello High School*

[^] As reported by the Virginia Department of Education. Includes students who are served in placements outside of ACPS.

SCOTTSVILLE ELEMENTARY SCHOOL

Home of the Tigers

Scottsville

22 Adopted vs. 23 Adopted

Expense	18-19 Actuals	19-20 Actuals	20-21 Actuals	21-22 Adopted	22-23 Adopted	Increase	% Increase
Salary	\$1,677,606	\$1,694,147	\$1,514,752	\$1,710,777	\$1,971,332	\$260,555	15.2%
Other Wages	\$25,203	\$53,767	\$97,761	\$40,165	\$40,821	\$656	1.6%
Benefits	\$661,959	\$650,625	\$598,431	\$629,191	\$754,378	\$125,187	19.9%
Operations	\$35,560	\$51,431	\$69,686	\$74,429	\$47,504	(\$26,925)	-36.2%
Total	\$2,400,328	\$2,449,970	\$2,280,630	\$2,454,562	\$2,814,035	\$359,473	14.6%

State Category Report	18-19 Actuals	19-20 Actuals	20-21 Actuals	21-22 Adopted	22-23 Adopted	Increase	% Increase
Instruction	\$2,168,435	\$2,242,097	\$2,054,925	\$2,231,265	\$2,557,804	\$326,539	14.6%
Admin/Attend&Health	\$55,698	\$54,082	\$54,903	\$57,733	\$64,239	\$6,506	11.3%
Technology	\$61,995	\$39,129	\$47,069	\$50,168	\$47,712	(\$2,456)	-4.9%
Building Services	\$114,200	\$114,662	\$123,732	\$115,396	\$144,280	\$28,884	25.0%
Total	\$2,400,328	\$2,449,970	\$2,280,630	\$2,454,562	\$2,814,035	\$359,473	14.6%

FTE Summary	21-22 FTE	22-23 FTE
<input type="checkbox"/> Instruction	29.87	32.02
Assistant Principal		1.00
Clerical	2.00	2.00
Principal	1.00	1.00
Teacher^	20.67	20.23
Teaching Assistant	6.20	7.79
<input type="checkbox"/> Admin/Attend&Health	1.00	1.00
Nurse	1.00	1.00
<input type="checkbox"/> Technology	0.70	0.60
Other Technical	0.20	0.60
Teacher^	0.50	
<input type="checkbox"/> Building Services	2.50	2.75
Custodial	2.50	2.75
Total	34.07	36.37

Adjusted FTE^^	29.9	31.2
-----------------------	-------------	-------------

^Positions included within the Teacher category are detailed in Section G – Staffing Allocations.

^^ Teaching Assistants (TAs) are allocated at a 3 TA to 1 Teacher ratio. This adjusted number is the FTE allocation to the school.

STONE-ROBINSON ELEMENTARY SCHOOL

Home of the Eagles

Stone-Robinson Elementary

General School Information

- Grades Served: PK-5
- Address: 958 North Milton Road Charlottesville, VA 22911
- Phone: 434-296-3754
- Principal: Angela Stokes

At Stone-Robinson Elementary, we believe all students come to us with a natural curiosity and love for learning. We maintain high expectations and provide authentic learning experiences that nurture each child's social, emotional, and academic growth. At the heart of it all, we believe in building strong relationships with our students and community members that promote a positive school climate — one that is safe, kind, and inclusive for all learners.



Angela Stokes
Principal
2021-Present

Student Enrollment: Historical Fall Membership[^]

	2019-2020	2020-2021	2021-2022
Total Enrollment	508	450	469
Students with Disabilities	13.8%	13.6%	16.0%
English Learners	4.7%	6.4%	6.2%
Economically Disadvantaged	27.4%	28.0%	24.7%

FY 2022-23 Budget Factors

Projected	
Total Enrollment	486
K-5 Enrollment	448
Pre-School Enrollment	38
Economically Disadvantaged	27.4%



Facility Information

- Built in 1961
- 71,100 square feet
- 11.3-acre site

*Stone-Robinson Elementary School is part of the **Southern Feeder Pattern**. Students continue to Burley or Walton Middle School and will graduate from Monticello High School.*

[^] As reported by the Virginia Department of Education. Includes students who are served in placements outside of ACPS.

STONE-ROBINSON ELEMENTARY SCHOOL

Home of the Eagles

Stone-Robinson

22 Adopted vs. 23 Adopted

Expense	18-19 Actuals	19-20 Actuals	20-21 Actuals	21-22 Adopted	22-23 Adopted	Increase	% Increase
Salary	\$2,851,711	\$3,117,588	\$3,206,977	\$3,628,594	\$3,858,602	\$230,008	6.3%
Other Wages	\$107,283	\$85,782	\$168,151	\$77,435	\$70,777	(\$6,658)	-8.6%
Benefits	\$1,088,964	\$1,178,206	\$1,351,265	\$1,476,876	\$1,536,591	\$59,715	4.0%
Operations	\$68,808	\$48,643	\$59,037	\$86,846	\$88,034	\$1,188	1.4%
Total	\$4,116,766	\$4,430,218	\$4,785,431	\$5,269,751	\$5,554,004	\$284,253	5.4%

State Category Report	18-19 Actuals	19-20 Actuals	20-21 Actuals	21-22 Adopted	22-23 Adopted	Increase	% Increase
Instruction	\$3,841,372	\$4,162,526	\$4,508,809	\$4,963,082	\$5,227,518	\$264,436	5.3%
Admin/Attend&Health	\$45,222	\$46,551	\$52,595	\$48,832	\$40,948	(\$7,884)	-16.1%
Technology	\$58,081	\$64,721	\$53,714	\$68,499	\$81,852	\$13,353	19.5%
Building Services	\$172,092	\$156,421	\$170,313	\$189,338	\$203,686	\$14,348	7.6%
Total	\$4,116,766	\$4,430,218	\$4,785,431	\$5,269,751	\$5,554,004	\$284,253	5.4%

FTE Summary	21-22 FTE	22-23 FTE
<input type="checkbox"/> Instruction	71.47	67.66
Assistant Principal	1.00	1.00
Clerical	2.50	2.00
Principal	1.00	1.00
Teacher^	41.73	41.83
Teaching Assistant	25.24	21.83
<input type="checkbox"/> Admin/Attend&Health	1.00	1.00
Nurse	1.00	1.00
<input type="checkbox"/> Technology	0.90	1.00
Other Technical	0.40	0.50
Teacher^	0.50	0.50
<input type="checkbox"/> Building Services	3.75	3.75
Custodial	3.75	3.75
Total	77.12	73.41

Adjusted FTE^^	60.2	58.8
-----------------------	-------------	-------------

^Positions included within the Teacher category are detailed in Section G – Staffing Allocations.

^^ Teaching Assistants (TAs) are allocated at a 3 TA to 1 Teacher ratio. This adjusted number is the FTE allocation to the school.

STONY POINT ELEMENTARY SCHOOL

Home of the Dragons

Stony Point Elementary

General School Information

- Grades Served: PK-5
- Address: 3893 Stony Point Road, Keswick, VA 22947
- Phone: 434-973-6405
- Principal: Maureen Jensen

Stony Point Elementary is a creative community of high-achieving learners who encourage each other to find and explore things about which they are passionate. It is our mission to foster an environment that allows our members to persevere to overcome challenges, to be unafraid to fail or innovate, and to believe that there is no limit to what we can accomplish.



Maureen Jensen
Principal
2021-Present

Student Enrollment: Historical Fall Membership[^]

	2019-2020	2020-2021	2021-2022
Total Enrollment	238	173	187
Students with Disabilities	11.3%	8.1%	7.5%
English Learners	8.4%	4.0%	3.2%
Economically Disadvantaged	32.4%	31.8%	29.4%

FY 2022-23 Budget Factors

Projected	
Total Enrollment	212
K-5 Enrollment	200
Pre-School Enrollment	12
Economically Disadvantaged	31.5%



Facility Information

- Built in 1934
- 38,500 square feet
- 11.6-acre site

*Stony Point Elementary School is part of both the **Northern and Southern feeder patterns**. Students continue to either Burley Middle School and then Monticello High School, or Lakeside Middle School followed by Albemarle High School.*

[^] As reported by the Virginia Department of Education. Includes students who are served in placements outside of ACPS.

STONY POINT ELEMENTARY SCHOOL

Home of the Dragons

Stony Point

22 Adopted vs. 23 Adopted

Expense	18-19 Actuals	19-20 Actuals	20-21 Actuals	21-22 Adopted	22-23 Adopted	Increase	% Increase
Salary	\$1,694,644	\$1,774,864	\$1,588,973	\$1,664,855	\$1,938,016	\$273,161	16.4%
Other Wages	\$54,938	\$49,412	\$64,261	\$40,436	\$38,166	(\$2,270)	-5.6%
Benefits	\$650,093	\$694,248	\$667,606	\$673,361	\$792,372	\$119,011	17.7%
Operations	\$55,040	\$36,398	\$51,772	\$61,700	\$54,831	(\$6,869)	-11.1%
Total	\$2,454,715	\$2,554,922	\$2,372,613	\$2,440,352	\$2,823,385	\$383,033	15.7%

State Category Report	18-19 Actuals	19-20 Actuals	20-21 Actuals	21-22 Adopted	22-23 Adopted	Increase	% Increase
Instruction	\$2,194,838	\$2,289,401	\$2,107,411	\$2,164,091	\$2,527,640	\$363,549	16.8%
Admin/Attend&Health	\$49,460	\$54,768	\$57,779	\$60,206	\$67,993	\$7,787	12.9%
Technology	\$61,626	\$53,498	\$49,708	\$49,608	\$55,398	\$5,790	11.7%
Building Services	\$148,791	\$157,256	\$157,714	\$166,447	\$172,354	\$5,907	3.5%
Total	\$2,454,715	\$2,554,922	\$2,372,613	\$2,440,352	\$2,823,385	\$383,033	15.7%

FTE Summary	21-22 FTE	22-23 FTE
<input type="checkbox"/> Instruction	27.25	29.13
Assistant Principal		1.00
Clerical	2.00	2.00
Principal	1.00	1.00
Teacher^	19.36	19.85
Teaching Assistant	4.89	5.28
<input type="checkbox"/> Admin/Attend&Health	1.00	1.00
Nurse	1.00	1.00
<input type="checkbox"/> Technology	0.60	0.65
Other Technical	0.20	0.25
Teacher^	0.40	0.40
<input type="checkbox"/> Building Services	3.00	3.00
Custodial	3.00	3.00
Total	31.85	33.78

Adjusted FTE^^	28.6	30.2
-----------------------	-------------	-------------

^Positions included within the Teacher category are detailed in Section G – Staffing Allocations.

^^ Teaching Assistants (TAs) are allocated at a 3 TA to 1 Teacher ratio. This adjusted number is the FTE allocation to the school.

WOODBROOK ELEMENTARY SCHOOL

Home of the Bears

Woodbrook Elementary

General School Information

- Grades Served: PK-5
- Address: 100 Woodbrook Drive, Charlottesville, VA 22901
- Phone: 434-973-6600
- Principal: Kristen Williams

Woodbrook is a neighborhood school that thrives on community partnerships to support each child with academic and social and emotional growth. We serve approximately 600 students who all live within a four-mile radius of the school. Our families speak 18 different languages and bring a unique cultural perspective to the home/school partnership. We are proud of the diversity in our school and celebrate all that we are able to learn from and with each other. We are committed to providing the best educational experience possible for our students. It is our honor to instill in them a curiosity for lifelong learning and the desire to be a kind and inclusive citizen in our school and in this world!



Kristen Williams
Principal
2019-Present

Student Enrollment: Historical Fall Membership[^]

	2019-2020	2020-2021	2021-2022
Total Enrollment	577	568	558
Students with Disabilities	12.0%	11.1%	11.5%
English Learners	25.6%	24.5%	23.5%
Economically Disadvantaged	61.2%	57.2%	53.9%

FY 2022-23 Budget Factors

Projected

Total Enrollment	594
K-5 Enrollment	546
Pre-School Enrollment	48
Economically Disadvantaged	58.9%



Facility Information

- Built in 1966
- 82,966 square feet
- 12.0-acre site

*Woodbrook Elementary School is part of the **Northern Feeder Pattern**. Students continue to Jouett Middle School and will graduate from Albemarle High School.*

[^] As reported by the Virginia Department of Education. Includes students who are served in placements outside of ACPS.

WOODBROOK ELEMENTARY SCHOOL

Home of the Bears

Woodbrook

22 Adopted vs. 23 Adopted

Expense	18-19 Actuals	19-20 Actuals	20-21 Actuals	21-22 Adopted	22-23 Adopted	Increase	% Increase
Salary	\$3,403,471	\$3,576,650	\$3,542,614	\$4,081,480	\$4,878,387	\$796,907	19.5%
Other Wages	\$140,630	\$119,760	\$162,354	\$72,711	\$76,984	\$4,273	5.9%
Benefits	\$1,354,095	\$1,317,059	\$1,466,070	\$1,606,523	\$1,913,033	\$306,510	19.1%
Operations	\$86,639	\$73,706	\$84,517	\$112,989	\$127,203	\$14,214	12.6%
Total	\$4,984,835	\$5,087,174	\$5,255,555	\$5,873,703	\$6,995,607	\$1,121,904	19.1%

State Category Report	18-19 Actuals	19-20 Actuals	20-21 Actuals	21-22 Adopted	22-23 Adopted	Increase	% Increase
Instruction	\$4,671,264	\$4,810,923	\$4,960,902	\$5,548,339	\$6,587,040	\$1,038,701	18.7%
Admin/Attend&Health	\$47,199	\$46,349	\$48,149	\$48,343	\$54,436	\$6,093	12.6%
Technology	\$54,355	\$71,515	\$52,142	\$81,165	\$75,199	(\$5,966)	-7.4%
Building Services	\$212,018	\$158,387	\$194,362	\$195,856	\$278,932	\$83,076	42.4%
Total	\$4,984,835	\$5,087,174	\$5,255,555	\$5,873,703	\$6,995,607	\$1,121,904	19.1%

FTE Summary	21-22 FTE	22-23 FTE
<input type="checkbox"/> Instruction	72.44	83.12
Assistant Principal	1.00	1.00
Clerical	2.50	2.50
Principal	1.00	1.00
Teacher^	56.67	58.07
Teaching Assistant	11.27	20.55
<input type="checkbox"/> Admin/Attend&Health	1.00	1.00
Nurse	1.00	1.00
<input type="checkbox"/> Technology	1.00	0.85
Other Technical	0.50	0.35
Teacher^	0.50	0.50
<input type="checkbox"/> Building Services	3.63	4.63
Custodial	3.63	4.63
Total	78.07	89.60

Adjusted FTE^ ^	70.5	75.8
------------------------	-------------	-------------

^Positions included within the Teacher category are detailed in Section G – Staffing Allocations.

^^ Teaching Assistants (TAs) are allocated at a 3 TA to 1 Teacher ratio. This adjusted number is the FTE allocation to the school.

BURLEY MIDDLE SCHOOL

Home of the Bears

Burley Middle School

General School Information

- Grades Served: 6-8
- Address: 901 Rose Hill Drive, Charlottesville, VA 22903
- Phone: 434-295-5101
- Principal: Kasaundra Blount

Jackson P. Burley Middle School, continuing to build on its historic legacy of integrity and achievement, seeks to cultivate educational partnerships that engage students, staff, families and the community in the pursuit of positive, academic outcomes for all students. Burley Middle School's vision and mission are driven by the core values, priorities, vision, and mission of Albemarle County Public Schools.



Kasaundra Blount
Principal
2020-Present

Student Enrollment: Historical Fall Membership[^]

	2019-2020	2020-2021	2021-2022
Total Enrollment	586	607	598
Students with Disabilities	15.0%	16.1%	14.2%
English Learners	15.7%	17.1%	18.7%
Economically Disadvantaged	39.9%	44.6%	38.8%

FY 2022-23 Budget Factors

Projected

Total Enrollment	584
Economically Disadvantaged	40.1%



Facility Information

- Built in 1951
- 123,626 square feet
- 15.3-acre site

*Burley Middle School is part of both the **Northern and Southern feeder patterns**. Students previously attended Agnor-Hurt, Mountain View, Stone-Robinson, or Stony Point Elementary School, and will graduate from either Albemarle or Monticello High School.*

[^] As reported by the Virginia Department of Education. Includes students who are served in placements outside of ACPS.

BURLEY MIDDLE SCHOOL

Home of the Bears

Burley

22 Adopted vs. 23 Adopted

Expense	18-19 Actuals	19-20 Actuals	20-21 Actuals	21-22 Adopted	22-23 Adopted	Increase	% Increase
Salary	\$3,598,493	\$3,691,766	\$4,176,321	\$4,442,088	\$4,787,242	\$345,154	7.8%
Other Wages	\$58,561	\$50,492	\$114,318	\$107,960	\$106,805	(\$1,155)	-1.1%
Benefits	\$1,440,634	\$1,457,256	\$1,751,604	\$1,768,579	\$1,918,280	\$149,701	8.5%
Operations	\$100,970	\$83,790	\$130,203	\$159,171	\$156,184	(\$2,987)	-1.9%
Total	\$5,198,658	\$5,283,305	\$6,172,446	\$6,477,798	\$6,968,511	\$490,713	7.6%

State Category Report	18-19 Actuals	19-20 Actuals	20-21 Actuals	21-22 Adopted	22-23 Adopted	Increase	% Increase
Instruction	\$4,877,005	\$4,905,201	\$5,801,314	\$6,068,095	\$6,533,262	\$465,167	7.7%
Admin/Attend&Health	\$59,009	\$57,970	\$59,045	\$59,871	\$67,729	\$7,858	13.1%
Technology	\$49,205	\$107,171	\$105,301	\$101,504	\$98,048	(\$3,456)	-3.4%
Building Services	\$213,440	\$212,962	\$206,787	\$248,328	\$269,472	\$21,144	8.5%
Total	\$5,198,658	\$5,283,305	\$6,172,446	\$6,477,798	\$6,968,511	\$490,713	7.6%

FTE Summary	21-22 FTE	22-23 FTE
<input type="checkbox"/> Instruction	72.65	73.84
Assistant Principal	1.00	1.00
Clerical	4.00	3.00
Principal	1.00	1.00
Teacher^	59.15	56.34
Teaching Assistant	7.50	12.50
<input type="checkbox"/> Admin/Attend&Health	1.00	1.00
Nurse	1.00	1.00
<input type="checkbox"/> Technology	1.30	1.20
Other Technical	0.80	0.80
Teacher^	0.50	0.40
<input type="checkbox"/> Building Services	5.00	5.00
Custodial	5.00	5.00
Total	79.95	81.04

Adjusted FTE^^	74.9	72.7
-----------------------	-------------	-------------

^Positions included within the Teacher category are detailed in Section G – Staffing Allocations.

^^ Teaching Assistants (TAs) are allocated at a 3 TA to 1 Teacher ratio. This adjusted number is the FTE allocation to the school.

HENLEY MIDDLE SCHOOL

Home of the Hornets

Henley Middle School

General School Information

- Grades Served: 6-8
- Address: 5880 Rockfish Gap Turnpike, Crozet, VA 22932
- Phone: 434-823-4393
- Principal: Beth Costa

Henley's North Star, Equity for Deeper Learning through Culturally Responsive and Anti-racist Teaching, guides our social, emotional, and academic work with our students and staff. We are deeply committed to ACPS's strategic plan, and we continue to evaluate our curriculum, assessment, and instruction through these lenses.

Being in person, five days a week for the 2021-22 school year presented many opportunities to build our community and strengthen the relationships that we have with students. Henley devotes time each day to not only social/emotional learning, but we have also re-envisioned our STING extended learning time to offer more clubs and activities of interest to our students. This occurs daily and has been an important improvement to the quality of the middle school experience.

Middle school is a most formative time in a child's life, and we have the opportunity every day to shape how students feel about themselves as learners, citizens and adolescents. Our structures influence our practices, so we constantly evaluate our structures against culturally responsive and anti-racist practices and structures to better create and maintain a student-centered environment.



Beth Costa
Principal
2015-Present

Student Enrollment: Historical Fall Membership[^]

	2019-2020	2020-2021	2021-2022
Total Enrollment	917	877	839
Students with Disabilities	9.9%	9.8%	10.3%
English Learners	2.6%	1.8%	2.1%
Economically Disadvantaged	13.2%	17.1%	13.9%

FY 2022-23 Budget Factors

Projected	
Total Enrollment	783
Economically Disadvantaged	12.8%



Facility Information

- Built in 1966
- 120,419 square feet
- 30.0-acre site

*Henley Middle School is part of the **Western Feeder Pattern**. Students previously attended Brownsville, Crozet, Meriwether Lewis, or Murray Elementary School, and will graduate from Western Albemarle High School.*

[^] As reported by the Virginia Department of Education. Includes students who are served in placements outside of ACPS.

HENLEY MIDDLE SCHOOL

Home of the Hornets

Henley

22 Adopted vs. 23 Adopted

Expense	18-19 Actuals	19-20 Actuals	20-21 Actuals	21-22 Adopted	22-23 Adopted	Increase	% Increase
Salary	\$4,523,060	\$4,809,208	\$4,794,950	\$5,232,496	\$5,368,527	\$136,031	2.6%
Other Wages	\$144,839	\$142,091	\$253,921	\$145,116	\$134,685	(\$10,431)	-7.2%
Benefits	\$1,786,254	\$1,838,328	\$1,942,697	\$2,071,267	\$2,072,161	\$894	0.0%
Operations	\$111,760	\$144,718	\$163,435	\$195,001	\$181,197	(\$13,804)	-7.1%
Total	\$6,565,912	\$6,934,345	\$7,155,003	\$7,643,880	\$7,756,570	\$112,690	1.5%

State Category Report	18-19 Actuals	19-20 Actuals	20-21 Actuals	21-22 Adopted	22-23 Adopted	Increase	% Increase
Instruction	\$6,131,801	\$6,524,640	\$6,773,869	\$7,115,761	\$7,170,844	\$55,083	0.8%
Admin/Attend&Health	\$51,379	\$50,985	\$49,454	\$50,293	\$57,033	\$6,740	13.4%
Technology	\$115,677	\$165,383	\$116,943	\$170,750	\$200,107	\$29,357	17.2%
Building Services	\$267,054	\$193,336	\$214,737	\$307,076	\$328,586	\$21,510	7.0%
Total	\$6,565,912	\$6,934,345	\$7,155,003	\$7,643,880	\$7,756,570	\$112,690	1.5%

FTE Summary	21-22 FTE	22-23 FTE
Instruction	86.45	82.51
Assistant Principal	2.00	2.00
Clerical	4.50	4.50
Principal	1.00	1.00
Teacher^	69.95	62.01
Teaching Assistant	9.00	13.00
Admin/Attend&Health	1.00	1.00
Nurse	1.00	1.00
Technology	2.00	2.00
Other Technical	1.00	1.00
Teacher^	1.00	1.00
Building Services	6.00	6.00
Custodial	6.00	6.00
Total	95.45	91.51

Adjusted FTE^^	89.4	82.8
-----------------------	-------------	-------------

^Positions included within the Teacher category are detailed in Section G – Staffing Allocations.

^^ Teaching Assistants (TAs) are allocated at a 3 TA to 1 Teacher ratio. This adjusted number is the FTE allocation to the school.

JOURNEY MIDDLE SCHOOL

Home of the Jaguars

Journey Middle School (formerly Jouett Middle School)

General School Information

- Grades Served: 6-8
- Address: 210 Lambs Lane, Charlottesville, VA 22901
- Phone: 434-975-9320
- Principal: Ashby Johnson

Journey Middle School serves students in the urban ring and Earlysville area of Albemarle County. Our diverse students and families speak 27 different languages and make Journey a special place to be. We maintain a strong focus on college and career readiness, as evidenced by our Advancement Via Individual Determination (AVID) program. We are an AVID National Demonstration School, which indicates that we are among the top 3% of schools in the world that implement AVID to fidelity. Our core values at Journey are growth, compassion, healthy risk-taking, connection, and equity.



Ashby Johnson
Principal
2019-Present

During the school year of 2021-22, we have continued our goals to be focused on the achievement of all students, but especially our students who receive special education services. We are dedicated and committed to creating family partnerships built on trust, respect, open communication, and collaboration. Our staff values each student and their unique needs and works to meet students where they are to support their social, emotional and academic growth. We have an intentional focus on learning and implementing culturally responsive teaching practices in our classrooms. We have formed several community partnerships over the years to include various sectors of the University of Virginia, Boys & Girls Club, Region Ten, 100 Black Men, Young Women's Leadership Program, and Madison House.

Student Enrollment: Historical Fall Membership[^]

	2019-2020	2020-2021	2021-2022
Total Enrollment	654	681	694
Students with Disabilities	11.6%	12.8%	15.9%
English Learners	26.0%	25.4%	22.3%
Economically Disadvantaged	55.2%	58.0%	44.7%

FY 2022-23 Budget Factors

Projected

Total Enrollment	687
Economically Disadvantaged	53.3%



Facility Information

- Built in 1966
- 94,929 square feet
- 20.0-acre site

*Journey Middle School is part of the **Northern Feeder Pattern**. Students previously attended Agnor-Hurt, Greer, Broadus Wood, or Woodbrook Elementary School, and will graduate from Albemarle High School.*

[^] As reported by the Virginia Department of Education. Includes students who are served in placements outside of ACPS.

JOURNEY MIDDLE SCHOOL

Home of the Jaguars

Journey

22 Adopted vs. 23 Adopted

Expense	18-19 Actuals	19-20 Actuals	20-21 Actuals	21-22 Adopted	22-23 Adopted	Increase	% Increase
Salary	\$3,711,986	\$4,095,369	\$4,410,161	\$4,823,701	\$5,317,755	\$494,054	10.2%
Other Wages	\$56,098	\$78,307	\$172,824	\$113,808	\$113,982	\$174	0.2%
Benefits	\$1,444,063	\$1,512,746	\$1,717,016	\$1,840,289	\$2,088,829	\$248,540	13.5%
Operations	\$131,208	\$90,350	\$79,651	\$157,433	\$172,623	\$15,190	9.6%
Total	\$5,343,355	\$5,776,771	\$6,379,652	\$6,935,231	\$7,693,189	\$757,958	10.9%

State Category Report	18-19 Actuals	19-20 Actuals	20-21 Actuals	21-22 Adopted	22-23 Adopted	Increase	% Increase
Instruction	\$4,940,701	\$5,449,215	\$6,040,366	\$6,509,965	\$7,238,486	\$728,521	11.2%
Admin/Attend&Health	\$46,398	\$48,576	\$48,596	\$50,760	\$57,902	\$7,142	14.1%
Technology	\$175,519	\$88,377	\$108,178	\$109,613	\$112,143	\$2,530	2.3%
Building Services	\$180,738	\$190,603	\$182,513	\$264,893	\$284,658	\$19,765	7.5%
Total	\$5,343,355	\$5,776,771	\$6,379,652	\$6,935,231	\$7,693,189	\$757,958	10.9%

FTE Summary	21-22 FTE	22-23 FTE
<input type="checkbox"/> Instruction	82.54	86.14
Assistant Principal	1.00	1.00
Clerical	4.00	4.00
Principal	1.00	1.00
Teacher^	67.54	66.14
Teaching Assistant	9.00	14.00
<input type="checkbox"/> Admin/Attend&Health	1.00	1.00
Nurse	1.00	1.00
<input type="checkbox"/> Technology	1.30	1.20
Other Technical	0.80	0.80
Teacher^	0.50	0.40
<input type="checkbox"/> Building Services	5.00	5.00
Custodial	5.00	5.00
Total	89.84	93.34

Adjusted FTE^^	83.8	84.0
-----------------------	-------------	-------------

^Positions included within the Teacher category are detailed in Section G – Staffing Allocations.

^^ Teaching Assistants (TAs) are allocated at a 3 TA to 1 Teacher ratio. This adjusted number is the FTE allocation to the school.

LAKESIDE MIDDLE SCHOOL

Home of the Sharks

Lakeside Middle School

General School Information

- Grades Served: 6-8
- Address: 2801 Powell Creek Drive, Charlottesville, VA 22911
- Phone: 434-975-0599
- Principal: Megan Wood

Lakeside Middle School enrolls nearly 600 students in grades 6 through 8 and includes over 70 faculty and staff. We are committed to providing our students with high quality learning experiences that are relevant and meaningful. We firmly believe that supporting student social and emotional well-being is an integral part of the middle school experience. We therefore encourage our students to participate in a variety of extracurricular activities that include but are not limited to school sponsored clubs, our fine and performing arts programs, and athletic opportunities through Albemarle Parks and Recreation because we feel that it is important for students to pursue and develop their personal interests and offer a wide variety of elective experiences.



Megan Wood
Principal
2018-Present

Student Enrollment: Historical Fall Membership[^]

	2019-2020	2020-2021	2021-2022
Total Enrollment	596	579	545
Students with Disabilities	11.4%	10.7%	9.4%
English Learners	7.9%	6.9%	8.6%
Economically Disadvantaged	19.6%	21.2%	19.3%

FY 2022-23 Budget Factors

Projected	
Total Enrollment	539
Economically Disadvantaged	18.4%



Facility Information

- Built in 1994
- 94,440 square feet
- 21.0-acre site

*Lakeside Middle School is part of the **Northern Feeder Pattern**. Students previously attended Baker-Butler, Hollymead, or Stony-Point Elementary School, and will graduate from Albemarle High School.*

[^] As reported by the Virginia Department of Education. Includes students who are served in placements outside of ACPS.

LAKESIDE MIDDLE SCHOOL

Home of the Sharks

Lakeside

22 Adopted vs. 23 Adopted

Expense	18-19 Actuals	19-20 Actuals	20-21 Actuals	21-22 Adopted	22-23 Adopted	Increase	% Increase
Salary	\$3,511,089	\$3,548,913	\$3,426,209	\$3,750,497	\$3,926,056	\$175,559	4.7%
Other Wages	\$103,141	\$101,658	\$119,205	\$105,221	\$107,476	\$2,255	2.1%
Benefits	\$1,385,864	\$1,377,584	\$1,394,189	\$1,479,241	\$1,587,911	\$108,670	7.3%
Operations	\$113,841	\$90,948	\$117,023	\$143,778	\$125,356	(\$18,422)	-12.8%
Total	\$5,113,936	\$5,119,104	\$5,056,625	\$5,478,737	\$5,746,799	\$268,062	4.9%

State Category Report	18-19 Actuals	19-20 Actuals	20-21 Actuals	21-22 Adopted	22-23 Adopted	Increase	% Increase
Instruction	\$4,716,324	\$4,824,589	\$4,741,941	\$5,125,967	\$5,336,571	\$210,604	4.1%
Admin/Attend&Health	\$52,182	\$39,186	\$40,698	\$41,145	\$55,441	\$14,296	34.7%
Technology	\$119,582	\$13,888	\$77,908	\$83,100	\$103,328	\$20,228	24.3%
Building Services	\$225,849	\$241,442	\$196,079	\$228,525	\$251,459	\$22,934	10.0%
Total	\$5,113,936	\$5,119,104	\$5,056,625	\$5,478,737	\$5,746,799	\$268,062	4.9%

FTE Summary	21-22 FTE	22-23 FTE
<input type="checkbox"/> Instruction	60.57	58.34
Assistant Principal	1.00	1.00
Clerical	4.00	3.00
Principal	1.00	1.00
Teacher^	48.07	45.34
Teaching Assistant	6.50	8.00
<input type="checkbox"/> Admin/Attend&Health	1.00	1.00
Nurse	1.00	1.00
<input type="checkbox"/> Technology	1.10	1.30
Other Technical	0.60	0.60
Teacher^	0.50	0.70
<input type="checkbox"/> Building Services	4.50	4.50
Custodial	4.50	4.50
Total	67.17	65.14

Adjusted FTE^^	62.8	59.8
-----------------------	-------------	-------------

^Positions included within the Teacher category are detailed in Section G – Staffing Allocations.

^^ Teaching Assistants (TAs) are allocated at a 3 TA to 1 Teacher ratio. This adjusted number is the FTE allocation to the school.

WALTON MIDDLE SCHOOL

Home of the Wildcats

Walton Middle School

General School Information

- Grades Served: 6-8
- Address: 4217 Red Hill Road, Charlottesville, VA 22903
- Phone: 434-977-5615
- Principal: Josh Walton

Walton Middle School serves students and families in the Southern Feeder Pattern of Albemarle County by establishing a community of learners and learning built on relationships, relevance, and rigor. We have three Guiding Principles:

1. We are a community of safe, responsible and respectful learners. This means that we help each other to grow academically, emotionally and socially.
2. We are welcoming, inclusive, and student-centered. We help ensure that doors of opportunity are open for all students.
3. We work as a team to foster healthy risk-taking, pursuit of passions, and a mindset of continuous improvement. We work to know every student through our advisory class and staff training in social-emotional learning and culturally responsive teaching practices.



Josh Walton
Principal
2016-Present

Student Enrollment: Historical Fall Membership[^]

	2019-2020	2020-2021	2021-2022
Total Enrollment	343	345	329
Students with Disabilities	15.5%	20.9%	17.9%
English Learners	4.1%	3.8%	4.3%
Economically Disadvantaged	40.2%	41.2%	31.9%

FY 2022-23 Budget Factors

Projected	
Total Enrollment	336
Economically Disadvantaged	38.6%



Facility Information

- Built in 1974
- 98,340 square feet
- 50.0-acre site

*Walton Middle School is part of the **Southern Feeder Pattern**. Students previously attended Mountain View, Red Hill, Scottsville, or Stone-Robinson Elementary School, and will graduate from Monticello High School.*

[^] As reported by the Virginia Department of Education. Includes students who are served in placements outside of ACPS.

WALTON MIDDLE SCHOOL

Home of the Wildcats

Walton

22 Adopted vs. 23 Adopted

Expense	18-19 Actuals	19-20 Actuals	20-21 Actuals	21-22 Adopted	22-23 Adopted	Increase	% Increase
Salary	\$2,680,432	\$2,861,351	\$2,960,427	\$3,269,006	\$3,615,300	\$346,294	10.6%
Other Wages	\$84,593	\$52,836	\$93,094	\$94,972	\$90,800	(\$4,172)	-4.4%
Benefits	\$1,090,936	\$1,160,586	\$1,224,836	\$1,310,305	\$1,485,861	\$175,556	13.4%
Operations	\$103,678	\$79,863	\$89,202	\$91,501	\$98,857	\$7,356	8.0%
Total	\$3,959,640	\$4,154,636	\$4,367,559	\$4,765,784	\$5,290,818	\$525,034	11.0%

State Category Report	18-19 Actuals	19-20 Actuals	20-21 Actuals	21-22 Adopted	22-23 Adopted	Increase	% Increase
Instruction	\$3,624,904	\$3,834,840	\$4,060,639	\$4,420,089	\$4,971,660	\$551,571	12.5%
Admin/Attend&Health	\$49,734	\$46,087	\$49,707	\$48,061	\$54,203	\$6,142	12.8%
Technology	\$88,414	\$75,313	\$80,086	\$86,514	\$34,921	(\$51,593)	-59.6%
Building Services	\$196,588	\$198,396	\$177,127	\$211,120	\$230,034	\$18,914	9.0%
Total	\$3,959,640	\$4,154,636	\$4,367,559	\$4,765,784	\$5,290,818	\$525,034	11.0%

FTE Summary	21-22 FTE	22-23 FTE
<input type="checkbox"/> Instruction	54.95	57.03
Assistant Principal	1.00	1.00
Clerical	3.00	3.00
Principal	1.00	1.00
Teacher^	40.95	41.31
Teaching Assistant	9.00	10.72
<input type="checkbox"/> Admin/Attend&Health	1.00	1.00
Nurse	1.00	1.00
<input type="checkbox"/> Technology	1.10	0.40
Other Technical	0.60	0.20
Teacher^	0.50	0.20
<input type="checkbox"/> Building Services	4.00	4.00
Custodial	4.00	4.00
Total	61.05	62.43

Adjusted FTE^^	55.0	55.2
-----------------------	-------------	-------------

^Positions included within the Teacher category are detailed in Section G – Staffing Allocations.

^^ Teaching Assistants (TAs) are allocated at a 3 TA to 1 Teacher ratio. This adjusted number is the FTE allocation to the school.

ALBEMARLE HIGH SCHOOL

Home of the Patriots

Albemarle High School

General School Information

- Grades Served: 9-12
- Address: 2775 Hydraulic Road, Charlottesville, VA 22901
- Phone: 434-975-9300
- Principal: Darah Bonham

The oldest and largest high school in the division, Albemarle High School serves a diverse cadre of students by providing a quality education with enriching experiences for our students.

At Albemarle, we strive every day to build trust, ignite enthusiasm, and to partner with our students, family, and community to ensure the best experience for our students and further the goals for our division within our new strategic plan, *Learning for All*. By continuing our own lifelong learning, the staff of Albemarle seeks to be open and responsive to all walks of life that make their way through the halls of AHS to facilitate a welcoming and inclusive learning environment.



Darah Bonham
Principal
2019-Present

Student Enrollment: Historical Fall Membership[^]

	2019-2020	2020-2021	2021-2022
Total Enrollment	1950	1887	1911
Students with Disabilities	13.1%	12.5%	11.7%
English Learners	11.5%	10.4%	11.2%
Economically Disadvantaged	28.4%	34.3%	27.4%

FY 2022-23 Budget Factors

Projected	
Total Enrollment	1872
Economically Disadvantaged	27.9%



Facility Information

- Built in 1953
- 350,103 square feet
- 40.0-acre site

*Albemarle High School is the culminating experience of all **Northern Feeder Pattern** middle and elementary schools.*

[^] As reported by the Virginia Department of Education. Includes students who are served in placements outside of ACPS.

ALBEMARLE HIGH SCHOOL

Home of the Patriots

Albemarle

22 Adopted vs. 23 Adopted

Expense	18-19 Actuals	19-20 Actuals	20-21 Actuals	21-22 Adopted	22-23 Adopted	Increase	% Increase
Salary	\$11,698,954	\$11,789,491	\$10,976,300	\$11,778,929	\$13,733,430	\$1,954,501	16.6%
Other Wages	\$794,372	\$625,789	\$667,091	\$691,718	\$696,449	\$4,731	0.7%
Benefits	\$4,724,343	\$4,571,345	\$4,421,471	\$4,637,758	\$5,312,506	\$674,748	14.5%
Operations	\$708,156	\$547,444	\$475,172	\$618,499	\$705,506	\$87,007	14.1%
Total	\$17,925,825	\$17,534,069	\$16,540,034	\$17,726,904	\$20,447,891	\$2,720,987	15.3%

State Category Report	18-19 Actuals	19-20 Actuals	20-21 Actuals	21-22 Adopted	22-23 Adopted	Increase	% Increase
Instruction	\$16,886,872	\$16,537,992	\$15,617,850	\$16,642,977	\$19,132,647	\$2,489,670	15.0%
Admin/Attend&Health	\$62,552	\$62,482	\$68,003	\$70,494	\$137,459	\$66,965	95.0%
Technology	\$277,536	\$263,297	\$210,131	\$228,847	\$322,174	\$93,327	40.8%
Building Services	\$698,865	\$670,298	\$644,050	\$784,586	\$855,611	\$71,025	9.1%
Total	\$17,925,825	\$17,534,069	\$16,540,034	\$17,726,904	\$20,447,891	\$2,720,987	15.3%

FTE Summary		21-22 FTE	22-23 FTE
<input type="checkbox"/> Instruction		193.69	206.00
Assistant Principal		4.00	4.00
Clerical		12.00	12.00
Other Management		2.00	2.00
Other Professional			1.00
Principal		1.00	1.00
Social Worker		1.00	1.00
Teacher^		150.48	157.79
Teaching Assistant		23.21	27.21
<input type="checkbox"/> Admin/Attend&Health		1.00	2.00
Nurse		0.91	1.91
Other Management		0.09	0.09
<input type="checkbox"/> Technology		3.00	3.90
Other Technical		2.00	2.90
Teacher^		1.00	1.00
<input type="checkbox"/> Building Services		15.00	15.00
Custodial		15.00	15.00
Total		212.69	226.90
Adjusted FTE^^		197.1	208.7

^Positions included within the Teacher category are detailed in Section G – Staffing Allocations.

^^ Teaching Assistants (TAs) are allocated at a 3 TA to 1 Teacher ratio. This adjusted number is the FTE allocation to the school.

MONTICELLO HIGH SCHOOL

Home of the Mustangs

Monticello High School

General School Information

- Grades Served: 9-12
- Address: 1400 Independence Way, Charlottesville, VA 22902
- Phone: 434-244-3100
- Principal: Rick Vrhovac

Monticello High School serves the community of the Southern Feeder Pattern. Monticello has always had and continues to have a proud tradition of academics, fine arts, athletics and extracurricular events.

This year, we are looking forward to students enjoying more field experience opportunities to enhance their learning and allow for students to collaborate and learn together, inside and outside of the classroom. We are also looking forward to all of our activities like our Monticello Showcase, Open House, Back to School, and Fresh Start programs to resume in-person at full capacity.



Rick Vrhovac
Principal
2017-Present

Student Enrollment: Historical Fall Membership[^]

	2019-2020	2020-2021	2021-2022
Total Enrollment	1207	1186	1213
Students with Disabilities	14.7%	14.3%	14.1%
English Learners	7.1%	6.3%	6.0%
Economically Disadvantaged	29.6%	34.8%	31.2%

FY 2022-23 Budget Factors

Projected	
Total Enrollment	1193
Economically Disadvantaged	30.1%



Facility Information

- Built in 1998
- 249,195 square feet
- 70.0-acre site

*Monticello High School is the culminating experience of all **Southern Feeder Pattern** middle and elementary schools.*

[^] As reported by the Virginia Department of Education. Includes students who are served in placements outside of ACPS.

MONTICELLO HIGH SCHOOL

Home of the Mustangs

Monticello

22 Adopted vs. 23 Adopted

Expense	18-19 Actuals	19-20 Actuals	20-21 Actuals	21-22 Adopted	22-23 Adopted	Increase	% Increase
Salary	\$7,017,141	\$7,421,908	\$7,334,719	\$8,226,057	\$9,283,342	\$1,057,285	12.9%
Other Wages	\$611,668	\$544,044	\$541,170	\$559,153	\$562,360	\$3,207	0.6%
Benefits	\$2,810,360	\$2,851,001	\$2,935,337	\$3,228,571	\$3,782,202	\$553,631	17.1%
Operations	\$569,145	\$503,893	\$422,676	\$476,241	\$561,531	\$85,290	17.9%
Total	\$11,008,314	\$11,320,846	\$11,233,902	\$12,490,022	\$14,189,435	\$1,699,413	13.6%

State Category Report	18-19 Actuals	19-20 Actuals	20-21 Actuals	21-22 Adopted	22-23 Adopted	Increase	% Increase
Instruction	\$10,279,858	\$10,490,777	\$10,521,935	\$11,681,595	\$13,305,647	\$1,624,052	13.9%
Admin/Attend&Health	\$57,456	\$59,666	\$61,228	\$63,107	\$72,047	\$8,940	14.2%
Technology	\$163,571	\$171,540	\$169,793	\$170,488	\$186,889	\$16,401	9.6%
Building Services	\$507,429	\$598,863	\$480,946	\$574,832	\$624,852	\$50,020	8.7%
Total	\$11,008,314	\$11,320,846	\$11,233,902	\$12,490,022	\$14,189,435	\$1,699,413	13.6%

FTE Summary		21-22 FTE	22-23 FTE
<input type="checkbox"/> Instruction		131.09	137.86
Assistant Principal		3.00	3.00
Clerical		10.00	10.00
Other Management		2.00	2.00
Other Professional			1.00
Principal		1.00	1.00
Teacher^		105.09	107.86
Teaching Assistant		10.00	13.00
<input type="checkbox"/> Admin/Attend&Health		1.00	1.00
Nurse		1.00	1.00
<input type="checkbox"/> Technology		2.00	2.00
Other Technical		1.00	1.00
Teacher^		1.00	1.00
<input type="checkbox"/> Building Services		11.00	11.00
Custodial		11.00	11.00
Total		145.09	151.86

Adjusted FTE^^	138.4	143.2
-----------------------	--------------	--------------

^Positions included within the Teacher category are detailed in Section G – Staffing Allocations.

^^ Teaching Assistants (TAs) are allocated at a 3 TA to 1 Teacher ratio. This adjusted number is the FTE allocation to the school.

WESTERN ALBEMARLE HIGH SCHOOL

Home of the Warriors

Western Albemarle High School

General School Information

- Grades Served: 9-12
- Address: 5941 Rockfish Gap Turnpike, Crozet, VA 22932
- Phone: 434-823-8700
- Principal: Jennifer Sublette

Western Albemarle High School (WAHS) enjoys a tradition of student success in academics, athletics, and the arts that is a result of a culture of high expectations, supported by the establishment of strong relationships with students and families. Given the challenges of the past two years, our school community is working together to strengthen learning partnerships and expand our support of both academic and social-emotional learning.

To help all students enjoy success, Western has expanded its peer-tutoring program and teacher-staffed learning center. Furthermore, the addition of Warrior Period to the daily schedule provides time for intervention, enrichment, and the full implementation of seminar programming for all four grade levels.



Jennifer Sublette
Principal
2021-Present

Student Enrollment: Historical Fall Membership[^]

	2019-2020	2020-2021	2021-2022
Total Enrollment	1207	1144	1152
Students with Disabilities	11.6%	11.5%	11.5%
English Learners	0.7%	1.0%	0.9%
Economically Disadvantaged	10.5%	12.3%	11.5%

FY 2022-23 Budget Factors

Projected	
Total Enrollment	1116
Economically Disadvantaged	10.5%



Facility Information

- Built in 1977
- 199,904 square feet
- 75.0-acre site

*Western Albemarle is the culminating experience of all **Western Feeder Pattern** middle and elementary schools.*

[^] As reported by the Virginia Department of Education. Includes students who are served in placements outside of ACPS.

WESTERN ALBEMARLE HIGH SCHOOL

Home of the Warriors

Western Albemarle

22 Adopted vs. 23 Adopted

Expense	18-19 Actuals	19-20 Actuals	20-21 Actuals	21-22 Adopted	22-23 Adopted	Increase	% Increase
Salary	\$7,010,731	\$7,131,282	\$6,740,148	\$7,339,015	\$8,321,440	\$982,425	13.4%
Other Wages	\$519,098	\$497,241	\$467,420	\$552,761	\$558,200	\$5,439	1.0%
Benefits	\$2,759,553	\$2,724,678	\$2,634,582	\$2,828,973	\$3,245,372	\$416,399	14.7%
Operations	\$415,562	\$492,180	\$441,437	\$529,210	\$589,278	\$60,068	11.4%
Total	\$10,704,945	\$10,845,381	\$10,283,586	\$11,249,959	\$12,714,290	\$1,464,331	13.0%

State Category Report	18-19 Actuals	19-20 Actuals	20-21 Actuals	21-22 Adopted	22-23 Adopted	Increase	% Increase
Instruction	\$10,012,527	\$10,146,917	\$9,614,865	\$10,472,909	\$11,863,289	\$1,390,380	13.3%
Admin/Attend&Health	\$97,685	\$102,142	\$78,423	\$69,768	\$77,477	\$7,709	11.0%
Technology	\$180,767	\$158,996	\$153,312	\$156,002	\$162,716	\$6,714	4.3%
Building Services	\$413,966	\$437,326	\$436,986	\$551,280	\$610,808	\$59,528	10.8%
Total	\$10,704,945	\$10,845,381	\$10,283,586	\$11,249,959	\$12,714,290	\$1,464,331	13.0%

FTE Summary	21-22 FTE	22-23 FTE
Instruction	114.19	121.62
Assistant Principal	3.00	3.00
Clerical	10.00	10.00
Other Management	2.00	2.00
Other Professional		1.00
Principal	1.00	1.00
Teacher^	90.39	91.82
Teaching Assistant	7.80	12.80
Admin/Attend&Health	1.00	1.00
Nurse	0.91	0.91
Other Management	0.09	0.09
Technology	1.80	1.70
Other Technical	1.00	1.00
Teacher^	0.80	0.70
Building Services	11.00	11.00
Custodial	11.00	11.00
Total	127.99	135.32

Adjusted FTE^^	122.8	126.7
-----------------------	--------------	--------------

^Positions included within the Teacher category are detailed in Section G – Staffing Allocations.

^^ Teaching Assistants (TAs) are allocated at a 3 TA to 1 Teacher ratio. This adjusted number is the FTE allocation to the school.

COMMUNITY LAB SCHOOL

Community Lab School

Beginning in the 2020-21 school year, **Murray High School** (grades 9-12) and the **Community Public Charter School** (grades 6-8) merged and now operates as one charter school serving grades 6-12.

General School Information

- Grades Served: 6-12
- Address: 1200 Forest Street, Charlottesville, VA 22903
- Phone: 434-296-3090
- Principal: Chad Ratliff



Chad Ratliff
Principal
2017-Present

ACPS' charter school serves grades 6 through 12 and aims to foster creativity and intellectual curiosity through art and design, experiential learning, mastery, and student agency. This approach aligns CLS directly with the School Board's vision for Learning for All: Our learners are engaged in authentic, challenging, and relevant learning experiences, becoming lifelong contributors and leaders in our dynamic and diverse society. CLS is also an International Baccalaureate (IB) World School, offering the Diploma Program to ACPS 11th and 12th graders. As a lab school, CLS also exists to design and pilot student-centered learning approaches to schooling with intent to inform practices more broadly. CLS regularly partners with the University of Virginia and other organizations to collaborate with the division's comprehensive middle and high schools to assist in building skills that are applicable countywide.

Student Enrollment: Historical Fall Membership[^]

	2019-2020	2020-2021	2021-2022
Total Enrollment	85	162	194
Students with Disabilities	32.9%	21.0%	19.6%
English Learners	0.0%	2.5%	2.1%
Economically Disadvantaged	21.2%	22.2%	4.6%

FY 2022-23 Budget Factors

Projected	
Total Enrollment	201
Economically Disadvantaged	22.5%



Facility Information

- Built in 1959
- 30,915 square feet
- 7.1-acre site

Albemarle County Public Schools' charter school serves middle and high school students from all three feeder patterns through an admissions process. Murray High School began serving high school students in 1988, while the Community Public Charter School opened to middle school students in 2008. The two schools merged into one charter school in 2020.

[^] As reported by the Virginia Department of Education..

COMMUNITY LAB SCHOOL

Community Lab School

22 Adopted vs. 23 Adopted

Expense	18-19 Actuals	19-20 Actuals	20-21 Actuals	21-22 Adopted	22-23 Adopted	Increase	% Increase
Salary	\$1,642,169	\$1,563,717	\$1,616,739	\$1,728,022	\$1,935,699	\$207,677	12.0%
Other Wages	\$51,052	\$21,068	\$53,726	\$44,054	\$44,010	(\$44)	-0.1%
Benefits	\$616,689	\$578,468	\$632,632	\$663,792	\$753,435	\$89,643	13.5%
Operations	\$97,199	\$62,433	\$81,362	\$54,267	\$57,331	\$3,064	5.6%
Total	\$2,407,109	\$2,225,687	\$2,384,459	\$2,490,135	\$2,790,475	\$300,340	12.1%

State Category Report	18-19 Actuals	19-20 Actuals	20-21 Actuals	21-22 Adopted	22-23 Adopted	Increase	% Increase
Instruction	\$2,232,603	\$2,050,771	\$2,175,786	\$2,263,404	\$2,559,036	\$295,632	13.1%
Admin/Attend&Health	\$44,282	\$48,296	\$47,107	\$51,625	\$52,202	\$577	1.1%
Technology	\$36,871	\$40,668	\$37,061	\$38,126	\$34,267	(\$3,859)	-10.1%
Building Services	\$93,352	\$85,952	\$124,506	\$136,980	\$144,970	\$7,990	5.8%
Total	\$2,407,109	\$2,225,687	\$2,384,459	\$2,490,135	\$2,790,475	\$300,340	12.1%

FTE Summary	21-22 FTE	22-23 FTE
<input type="checkbox"/> Instruction	25.07	29.29
Clerical	2.00	2.00
Principal	1.00	1.00
Teacher^	21.07	19.77
Teaching Assistant	1.00	6.52
<input type="checkbox"/> Admin/Attend&Health	1.00	1.00
Nurse	1.00	1.00
<input type="checkbox"/> Technology	0.45	0.40
Other Technical	0.25	0.20
Teacher^	0.20	0.20
<input type="checkbox"/> Building Services	2.63	2.63
Custodial	2.63	2.63
Total	29.15	33.32

Adjusted FTE^^	28.5	29.0
-----------------------	-------------	-------------

^Positions included within the Teacher category are detailed in Section G – Staffing Allocations.

^^ Teaching Assistants (TAs) are allocated at a 3 TA to 1 Teacher ratio. This adjusted number is the FTE allocation to the school.

CENTER I

Center I

General Information

- Address: 1180 Seminole Trail, Suite 225, Charlottesville, VA 22901
- Phone: 434-244-8900
- Director: Michael Craddock

Center I is Albemarle County Public School's high school specialty center that hosts an Information and Communication Technology learning community. As a learning center designed to support students exploring their passions and interests, the student experience over three years evolves from introductory coursework to capstone projects that include self-directed and work-based learning experiences. The passion, problem, and project-based approach to instruction bring together both elective course work within the ICT field along with academic courses to ensure students see purpose and relevance in their work at Center I.



Michael Craddock
Director
2019-Present

Center I serves students in grades 10, 11, and 12 within the ICT learning community while also continuing to offer a range of experiences for students in their Senior year. On a collegiate schedule, with college faculty, students can elect to sign up for Composition I and II and US Government I and II to meet their English 12 and US/VA Government graduation requirements. Students can also participate in a self-directed learning experience where, with the support of Center I faculty, they can complete a Senior Capstone Project in an area of interest. A Senior Capstone Project can focus on one large project or be composed of several smaller ones. The outcomes of the project are determined by the student and may include high school course credit, earning an industry-recognized credential, participation in a work-based learning experience, and/or completion of a robust portfolio to support career and college aspirations.

Historical Enrollment[^]

	2019-2020	2020-2021	2021-2022
Daily Enrollment	21	55	76

FY 2022-23 Budget Factors[^]

Projected	
Daily Enrollment	120
Economically Disadvantaged	23.9%



Facility Information

- Opened in 2018
- 42,274 square feet (all programs)
- Located in the Seminole Place complex

[^] Enrollment shown is daily enrollment. Total student enrollment is double the daily enrollment.

CENTER I

Center I

22 Adopted v. 23 Adopted

Expense	18-19 Actuals	19-20 Actuals	20-21 Actuals	21-22 Adopted	22-23 Adopted	Increase	% Increase
Salary		\$177,816	\$346,578	\$520,977	\$742,044	\$221,067	42.4%
Other Wages		\$44	\$7,260	\$7,514	\$10,617	\$3,103	41.3%
Benefits		\$69,937	\$128,558	\$206,397	\$283,737	\$77,340	37.5%
Operations		\$77,807	\$34,775	\$59,772	\$70,349	\$10,577	17.7%
Total		\$325,604	\$517,171	\$794,660	\$1,106,747	\$312,087	39.3%

State Category Report	18-19 Actuals	19-20 Actuals	20-21 Actuals	21-22 Adopted	22-23 Adopted	Increase	% Increase
Instruction		\$275,909	\$491,751	\$740,740	\$1,062,779	\$322,039	43.5%
Admin/Attend&Health		\$49,695	\$25,420	\$53,920	\$43,968	(\$9,952)	-18.5%
Total		\$325,604	\$517,171	\$794,660	\$1,106,747	\$312,087	39.3%

FTE Summary	21-22 FTE	22-23 FTE
<input type="checkbox"/> Instruction	8.55	11.76
Teacher^	6.55	8.76
Assistant Principal	1.00	1.00
Clerical	1.00	1.00
Teaching Assistant		1.00
<input type="checkbox"/> Admin/Attend&Health	1.00	1.00
Nurse	1.00	1.00
Total	9.55	12.76
Adjusted FTE^^	9.6	12.1

^Positions included within the Teacher category are detailed in Section G – Staffing Allocations.

^^ Teaching Assistants (TAs) are allocated at a 3 TA to 1 Teacher ratio. This adjusted number is the FTE allocation to the school.

POST HIGH

Post High

General Information

- Address: 915 Henry Avenue, Charlottesville, VA 22903
- Phone: 434-977-4610
- Coordinator: Ashley Struzik

Post High serves 18- to 22-year-old students with a variety of disabilities. The Post High program is designed to provide supported transitions from the traditional school setting to an adult life in the community. Students receive instruction in employment skills, functional academic skills, social skills, and independent living skills according to an individualized education plan. The Post High staff work closely with the students, their families, and appropriate adult service agencies to facilitate a positive transition.

Post High's specialized instruction includes focuses on:

- Vocational Skills — Developing the ability to secure, maintain and be successful in the workplace and on the job.
- Functional Academic Skills — Continuing to develop academic achievement in the context of everyday life.
- Social Skills — Increasing the capacity to engage peers, family and people in the community and workplace through communication and behaviors that promote positive relationships.
- Independent Living Skills — Learning and practicing competencies needed to experience a rewarding and productive life while engaging the community in which we live.

Prior to FY 2020/21, this budget was previously shown as part of *Albemarle High School*.

Student Enrollment: Historical Fall Membership[^]

	2019-2020	2020-2021	2021-2022
Total Enrollment	25	21	22

FY 2022-23 Budget Factors

Projected	
Total Enrollment	26



Ashley Struzik
Coordinator
2020-Present



Facility Information

- Opened in 2002
- 2,350 square feet

Located behind Burley Middle School.

[^] Before 21-22 Post High enrollment was previously included as part of *Albemarle High School*.

POST HIGH

Post High

22 Adopted v. 23 Adopted

Expense	18-19 Actuals	19-20 Actuals	20-21 Actuals	21-22 Adopted	22-23 Adopted	Increase	% Increase
Salary			\$268,972	\$305,072	\$372,415	\$67,343	22.1%
Other Wages			\$7,283		\$0	\$0	
Benefits			\$143,161	\$153,691	\$178,366	\$24,675	16.1%
Total			\$419,416	\$458,763	\$550,781	\$92,018	20.1%

State Category Report	18-19 Actuals	19-20 Actuals	20-21 Actuals	21-22 Adopted	22-23 Adopted	Increase	% Increase
Instruction			\$419,416	\$458,763	\$550,781	\$92,018	20.1%
Total			\$419,416	\$458,763	\$550,781	\$92,018	20.1%

FTE Summary	21-22 FTE	22-23 FTE
<input type="checkbox"/> Instruction	7.66	9.33
Teacher^	3.66	3.33
Teaching Assistant	4.00	6.00
Total	7.66	9.33

Adjusted FTE^^	5.0	5.3
-----------------------	------------	------------

^ Positions included within the Teacher category are detailed in Section G – Staffing Allocations.

^^ Teaching Assistants (TAs) are allocated at a 3 TA to 1 Teacher ratio. This adjusted number is the FTE allocation to the school.

^^^ Prior to 21-22 this budget was included in as part of Albemarle High School.

Charlottesville Albemarle Technical Education Center (CATEC)

General Information

- Address: 1000 East Rio Road, Charlottesville, VA 22901
- Phone: 434-973-4461
- Director: Stephanie Carter

The Charlottesville-Albemarle Technical Education Center (CATEC) is a regional technical education center that serves Albemarle County and Charlottesville City. CATEC offers a wide variety of skilled-trades, CTE electives that train high school students to pursue their passion through a fulfilling career. Students have opportunities to practice hands-on and work-based learning activities alongside academically-driven curricula that enables them to earn dual-enrollment college credit, achieve industry certifications, and practice workplace readiness skills. CATEC prides itself on its integrated value, equity-based programs, and contribution to students' learning journeys.



Stephanie Carter
Director
2019-Present

Student Enrollment: Fall Membership

	2019-2020	2020-2021	2021-2022
Total Enrollment*	297	290	295
Total ACPS Enrollment	217	230	224

**Includes ACPS students, Charlottesville City Schools students, and out-of-district/homeschool students*



Facility Information

- Built in 1972
- 59,800 square feet
- 19.5-acre site

CATEC is operated jointly by Albemarle County Public Schools and Charlottesville City Schools.

C.A.T.E.C					22 Adopted v. 23 Adopted		
Expense	18-19 Actuals	19-20 Actuals	20-21 Actuals	21-22 Adopted	22-23 Adopted	Increase	% Increase
Salary				\$59,485	\$155,885	\$96,400	162.1%
Benefits				\$33,222	\$66,889	\$33,667	101.3%
Operations	\$1,789,085	\$1,770,408	\$1,775,695	\$1,950,679	\$2,142,530	\$191,851	9.8%
Total	\$1,789,085	\$1,770,408	\$1,775,695	\$2,043,386	\$2,365,304	\$321,918	15.8%

State Category Report	18-19 Actuals	19-20 Actuals	20-21 Actuals	21-22 Adopted	22-23 Adopted	Increase	% Increase
Instruction	\$1,789,085	\$1,770,408	\$1,773,175	\$2,043,386	\$2,365,304	\$321,918	15.8%
Building Services			\$2,520				
Total	\$1,789,085	\$1,770,408	\$1,775,695	\$2,043,386	\$2,365,304	\$321,918	15.8%

FTE Summary		21-22 FTE	22-23 FTE
<input checked="" type="checkbox"/> Instruction		1.65	3.33
Teacher^		0.65	1.33
Teaching Assistant		1.00	2.00
Total		1.65	3.33

Adjusted FTE^ ^	1.0	2.0
------------------------	------------	------------

^Positions included within the Teacher category are detailed in Section G – Staffing Allocations.

^^ Teaching Assistants (TAs) are allocated at a 3 TA to 1 Teacher ratio. This adjusted number is the FTE allocation to the school.

Multi-School Services

Center for Learning & Growth

General Information

- Address: 225 Lambs Lane, Charlottesville, VA 22901
- Phone: 434-974-8070
- Coordinator: Ashley Struzik

The Center for Learning and Growth is the ACPS alternative learning program. The program recognizes that a restorative approach to the referral concerns, continued instruction and maintaining a connection to the student's neighborhood school is critical to the success of any specialized short-term intervention to ensure student success. Specialized support to individual students that require an alternative learning plan is available via a Superintendent referral for students in grades 6 through 12.

The staff provides a warm and welcoming experience for the students they serve. Students served by the Center for Learning and Growth are offered the opportunity to work through the events that led to their referral in a restorative context while continuing their learning with additional support that includes a blend of face-to-face instruction and computer-based instruction. The program offers the services of a caring staff who collaborate with each student's base school, including family and community partners to wrap around the student in an effort to meet the instructional, social and emotional needs of each student. Students eligible for services by the Center for Learning and Growth are typically determined by the Director of Student Services in cooperation with the school principal, parent, and student. Student referrals for services are also made through the Office of the Superintendent and as a result of School Board action.

Prior to FY 2021/22, this budget was previously included within Other Multi-School Services.

Center For Learning & Growth						22 Adopted v. 23 Adopted	
Expense	18-19 Actuals	19-20 Actuals	20-21 Actuals	21-22 Adopted	22-23 Adopted	Increase	% Increase
Salary			\$141,230	\$293,587	\$322,519	\$28,932	9.9%
Other Wages			\$4,000		\$21,092	\$21,092	
Benefits			\$51,693	\$99,240	\$118,722	\$19,482	19.6%
Total			\$196,923	\$392,827	\$462,333	\$69,506	17.7%
State Category Report	18-19 Actuals	19-20 Actuals	20-21 Actuals	21-22 Adopted	22-23 Adopted	Increase	% Increase
Instruction			\$196,923	\$392,827	\$462,333	\$69,506	17.7%
Total			\$196,923	\$392,827	\$462,333	\$69,506	17.7%
FTE Summary				21-22 FTE	22-23 FTE		
<input type="checkbox"/> Instruction				4.34	4.34		
Teacher^				4.34	4.34		
Total				4.34	4.34		
Adjusted FTE^^				4.3	4.3		

^ Positions included within the Teacher category are detailed in Section G – Staffing Allocations.

^^ Teaching Assistants (TAs) are allocated at a 3 TA to 1 Teacher ratio. This adjusted number is the FTE allocation to the school.

Other Multi-School Services

This area is for staff that are typically assigned to schools throughout the year but are not yet currently assigned to a specific school. Examples of this include emergency staffing and some new proposals. They are assigned throughout the year to meet specific needs at individual schools.

Multi-School Services

22 Adopted v. 23 Adopted

Expense	18-19 Actuals	19-20 Actuals	20-21 Actuals	21-22 Adopted	22-23 Adopted	Increase	% Increase
Salary	\$3,347,279	\$3,692,153	\$3,769,402	\$6,022,488	\$7,367,137	\$1,344,649	22.3%
Other Wages	\$92,695	\$93,257	\$173,422	\$270,047	\$300,109	\$30,062	11.1%
Benefits	\$2,188,926	\$2,264,403	\$2,419,286	\$3,432,643	\$3,876,266	\$443,623	12.9%
Total	\$5,628,900	\$6,049,813	\$6,362,110	\$9,725,178	\$11,543,512	\$1,818,334	18.7%

State Category Report	18-19 Actuals	19-20 Actuals	20-21 Actuals	21-22 Adopted	22-23 Adopted	Increase	% Increase
Instruction	\$4,715,942	\$4,883,989	\$5,055,282	\$7,616,547	\$8,917,034	\$1,300,487	17.1%
Admin/Attend&Health	\$828,012	\$807,514	\$1,146,503	\$1,564,835	\$1,851,493	\$286,658	18.3%
Technology	\$0	\$81,664	\$69,153		\$66,499	\$66,499	
Building Services	\$84,946	\$276,647	\$91,172	\$543,796	\$708,486	\$164,690	30.3%
Total	\$5,628,900	\$6,049,813	\$6,362,110	\$9,725,178	\$11,543,512	\$1,818,334	18.7%

FTE Summary	21-22 FTE	22-23 FTE
Instruction	72.95	78.27
Assistant Principal - Intern	2.00	2.00
Clerical	1.00	1.00
Other Management	2.10	0.10
Social Worker	0.50	0.50
Teacher^	64.35	74.67
Teaching Assistant	3.00	
Admin/Attend&Health	20.20	22.20
Other Professional	7.00	8.00
Psychologist	13.20	14.20
Technology		0.50
Teacher^		0.50
Building Services	11.22	13.18
Custodial	11.22	13.18

Adjusted FTE^^	102.4	114.2
-----------------------	--------------	--------------

^Positions included within the Teacher category are detailed in Section G – Staffing Allocations.

^^ Teaching Assistants (TAs) are allocated at a 3 TA to 1 Teacher ratio. This adjusted number is the FTE allocation to the school.

Other Multi-School Services

FY 23 Request FTEs

1.00	Floating Bookkeeper (Clerical)
52.67	Special Education Specialists
6.44	ESOL Teachers
2.81	Instructional Coaches
14.20	Psychologists
8.00	Student Safety Coaches
2.00	Assistant Principal Interns
4.00	SEAD Teachers
5.76	Emergency Staffing Teachers
3.49	Reduce Classloads Teachers
.10	Homeless Coordinator
13.18	Custodians
0.50	LTI
114.2	

School Program Categories

22 Adopted v. 23 Adopted

Instruction	18-19 Actuals	19-20 Actuals	20-21 Actuals	21-22 Adopted	21-22 FTE	22-23 Adopted	22-23 FTE	Increase	% Increase
Regular Education	\$81,521,512	\$83,513,783	\$83,552,358	\$90,624,342	1,060.14	\$101,221,762	1,118.81	\$10,597,420	11.7%
Special Education	\$18,270,061	\$19,384,245	\$20,815,116	\$23,757,366	361.73	\$24,703,501	321.87	\$946,135	4.0%
School Counseling	\$5,253,919	\$5,545,719	\$5,764,446	\$6,477,755	81.66	\$6,515,754	71.51	\$37,999	0.6%
Elem. Art, Music, and PE	\$4,481,125	\$4,580,872	\$4,652,861	\$4,783,870	58.24	\$5,567,818	61.27	\$783,948	16.4%
Vocational Education	\$3,053,882	\$3,045,634	\$3,105,680	\$3,327,172	17.34	\$3,763,613	17.51	\$436,441	13.1%
Library/Media	\$2,287,756	\$2,238,210	\$2,407,215	\$2,503,016	30.10	\$2,882,153	33.11	\$379,137	15.1%
ESOL	\$2,772,892	\$2,809,760	\$3,154,668	\$3,459,048	41.61	\$4,062,541	44.79	\$603,493	17.4%
Athletics	\$2,364,291	\$2,216,340	\$1,914,125	\$2,132,685	6.00	\$2,440,273	9.00	\$307,588	14.4%
Talent Development	\$1,586,512	\$1,741,402	\$1,781,118	\$1,824,765	21.10	\$2,031,086	21.20	\$206,321	11.3%
Instructional Coaching	\$1,691,802	\$1,540,905	\$1,512,971	\$1,724,656	20.00	\$2,109,487	22.01	\$384,831	22.3%
Preschool	\$1,714,832	\$1,698,605	\$1,470,074	\$2,211,663	41.00	\$2,133,588	36.66	(\$78,075)	-3.5%
Intervention Prevention	\$763,212	\$1,082,914	\$566,333	\$996,173	3.67	\$974,486	2.90	(\$21,687)	-2.2%
Response to Intervention	\$836,854	\$835,741	\$888,264	\$834,089	9.71	\$560,316	5.87	(\$273,773)	-32.8%
Alternative Education	\$486,324	\$449,593	\$239,682	\$416,289	4.64	\$227,779	2.20	(\$188,510)	-45.3%
Instruction Total	\$127,084,973	\$130,683,724	\$131,824,911	\$145,072,889	1,756.94	\$159,194,157	1,768.72	\$14,121,268	9.7%
Admin, Attend & Health	18-19 Actuals	19-20 Actuals	20-21 Actuals	21-22 Adopted	21-22 FTE	22-23 Adopted	22-23 FTE	Increase	% Increase
Regular Education	\$78,531	\$81,857	\$92,575						
Health	\$2,053,584	\$2,167,641	\$2,374,484	\$2,933,647	45.20	\$3,422,832	48.20	\$489,185	16.7%
Admin, Attend & Health	\$2,132,115	\$2,249,498	\$2,467,059	\$2,933,647	45.20	\$3,422,832	48.20	\$489,185	16.7%
Technology	18-19 Actuals	19-20 Actuals	20-21 Actuals	21-22 Adopted	21-22 FTE	22-23 Adopted	22-23 FTE	Increase	% Increase
Technology	\$2,119,439	\$2,216,524	\$2,039,534	\$2,320,089	28.00	\$2,521,079	28.00	\$200,990	8.7%
Technology	\$2,119,439	\$2,216,524	\$2,039,534	\$2,320,089	28.00	\$2,521,079	28.00	\$200,990	8.7%
Building Services	18-19 Actuals	19-20 Actuals	20-21 Actuals	21-22 Adopted	21-22 FTE	22-23 Adopted	22-23 FTE	Increase	% Increase
Building Services Maintenance	\$5,426,114	\$5,503,754	\$5,277,497	\$6,650,975	130.44	\$7,712,115	137.29	\$1,061,140	16.0%
Building Services	\$5,426,114	\$5,503,754	\$5,277,497	\$6,650,975	130.44	\$7,712,115	137.29	\$1,061,140	16.0%
School Programs Total	\$136,762,640	\$140,653,501	\$141,609,000	\$156,977,600	1,960.58	\$172,850,183	1,982.21	\$15,872,583	10.1%

The program categories in this section are guided by state reporting standards and reflect budgets that are assigned specifically to schools. They do not account for budgets assigned to Division-wide services (departments). As such, the total budgets in this section equal the total budgets dedicated to specific school locations budgets in the previous section.

Instruction

Refer to Section G for details regarding staffing standards and allocations.

Regular Education

Teachers and Teaching Assistants are allocated for core classroom instruction as per division staffing standards (page G-4).

Beyond core class size, division-wide, over 100 additional teachers are provided to devote more time/resources for students who are economically disadvantaged. Differentiated staffing is staffing provided above the regular allocation and is determined by a formula that uses grade level and Free/Reduced Lunch percentages. The purpose of differentiated staffing is to assist with equity as some schools have more challenges based on risk factors of students. This staffing can be used to lower class sizes and/or provide additional supports for students.

Special Education

Special education programs include services for students who are intellectually disabled, physically handicapped, emotionally disturbed, learning disabled, or otherwise identified as a student with special needs. Staffing allocations are informed by the needs of identified students.

School Counseling

This program includes opportunities and experiences involving social, emotional, and academic counseling services for all students. In addition, consulting with staff members and parents on learning challenges; assisting students as they make educational and career plans; assisting students with personal and social development; providing referral assistance; and developing group and individual classroom guidance programs, are included.

Elementary Art, Music and P.E.

The Commonwealth requires that each school division employ five full-time equivalent positions per 1,000 students in grades kindergarten through five to serve as elementary resource teachers in art, music, and physical education (P.E.). ACPS establishes a standard beyond this state requirement that specifies a minimum level of services to be delivered to each student.

Vocational Education

Vocational Education, also known as Career and Technical Education (CTE), provides instructional programs through which students acquire knowledge and learn relevant technical applications of current and emerging careers while preparing for post-secondary studies and employment. The CTE curricula are focused on six program specific areas: business and information technology, family and computer sciences, health and medical sciences, marketing, technology education and engineering, and trade and industrial. Standard CTE course offerings are available in all middle and high schools. Advanced coursework and programs are also available through the high school academies and dual enrollment coursework. High school operational funds are the payment for students to attend Charlottesville Albemarle Technical Education Center (CATEC).

Library Media

Library Media Specialists are budgeted in this category. They oversee activities concerned with the use of all teaching and learning resources. Educational media are defined as any devices, content materials, methods, or experiences used for teaching and learning purposes. Operational funding for media centers is contained within the Regular Education category.

ESOL

The English as a Second or Other Language (ESOL) program serves ~1,400 students with widely varying levels of ability. Students with the greatest need, very little to no English abilities, receive intensive instruction to help students become proficient in the English language. The largest number of ESOL students are in a monitoring status when their proficiency reaches acceptable standards, and they require no more direct services, yet are required to be tracked and monitored annually. The State requires a minimum staffing of 17 staff per 1,000 students with limited English proficiency; however, ACPS staffs beyond the standards. Refer to Section G for detailed staffing standards.

Athletics

Athletics encompasses all direct costs associated with high school athletics. It includes one athletic director, one athletic clerical staff, and stipends for coaches for each of our 3 comprehensive high schools. These expenses also include fees for officiating, VHSL mandated fees, security for games, uniforms, and other equipment necessary to operate a number of athletic teams within each school.

Talent Development

Talent Development includes services for students in grades K-12. Students are to be provided services according to the Virginia Department of Education guidelines.

Instructional Coaching

Instructional Coaches (ICs) partner with teachers to help them improve teaching and learning so students are more successful. To do this, ICs collaborate with teachers to get a clear picture of current reality, identify goals, assist with deciding on instructional strategies and assessment practices to meet the goals, monitor progress, and problem solve until the teacher's goals are met. This research-driven best practice of reflection allows teachers to consider their practices as they progress through a Plan, Do, Study, Act model to improve student outcomes.

Preschool

ACPS provides four preschool programs: Head Start classrooms, Virginia Preschool Initiative (Bright Stars) classrooms, Title I, and Early Childhood Special Education. A description for each program is included in the glossary.

Intervention Prevention

Intervention and prevention funds are allocated to schools based on school enrollment, and factor in the number of economically disadvantaged students. Funding and staffing support the continued efforts of schools to provide timely and effective interventions to students performing below grade level standards. These funds are provided to schools for additional instructional services.

Response to Intervention (RTI)

Response to Intervention (RTI) provides rapid deployment of differentiated instruction, assistive technology tools, and intervention strategies that can help eliminate learning gaps before they grow in significance. Resources in this program are meant to reduce the number of students needing more involved interventions in the future. RTI staffing is provided to schools at all levels.

Alternative Education

The Alternative Education program provides resources for the Center for Learning and Growth. Both staffing and operational funds are provided to allow the School Division to partner with community agencies. Students participate in restorative practices as they progress academically so that they are able to return to their base school.

Health Services

This program includes activities associated with physical and mental health services, including medical, dental and nursing services. In addition to a full-time nurse in every school, currently an 11-month coordinator of nursing services is housed at one of our schools to provide support for the nurses.

Additionally, the program includes activities concerned with administering psychological tests and interpreting the results; gathering and interpreting information about student behavior; working with other staff members in planning school programs that meet the special needs of students as indicated by psychological tests and behavioral evaluations; and planning and managing programs provided by psychological services, including psychological counseling for students, staff, and parents.

Building Services

Custodial staffing at schools is generally set by formula and square footage of the facility to be cleaned. Each school is assigned a lead custodian to head the custodial/light manual work at each school and schedule/manage community building rental needs. A custodian is assigned for each 20,000-25,000 square feet to be cleaned, excluding the lead custodian.

Technology

The technology program is directly related to the delivery of classroom instruction and the interaction between students and teachers, including the actual instruction of technology and technology support for students, staff, and school administration. Technology expenditures include technology resource positions (Learning Technology Integrators) that provide staff development as well as technology support positions that provide technical support (Technology Service Specialists).