

- ### LEGEND
- 6" VERTICAL CURB (SEE DETAIL ON SHEET C7.0)
 - 6" CURB & GUTTER (PER CITY DWG NO. R-1)
 - VALLEY GUTTER (SEE DETAIL ON SHEET C7.0)
 - 6" MOW BAND (SEE LANDSCAPE ARCHITECTURAL PLANS)
 - DROP INLET (SEE STORM DRAIN & SANITARY SEWER PLAN, SHEET C7.0)
 - ⊙ MANHOLE WITH DRAIN INLET
 - × 91.23 EXISTING GRADE ELEVATION
 - AC 91.50 PROPOSED ASPHALT ELEVATION
 - TC 91.50 PROPOSED TOP BACK-OF-CURB ELEVATION
 - FL 91.50 PROPOSED FLOWLINE ELEVATION
 - L 91.50 PROPOSED LIP ELEVATION
 - C 91.50 PROPOSED CONCRETE ELEVATION
 - G 91.50 PROPOSED GROUND ELEVATION
 - R 91.50 PROPOSED RIM ELEVATION
 - FG 91.50 PROPOSED FINISH GRADE ELEVATION
 - H= 6.0' PROPOSED RETAINING WALL HEIGHT
 - 4.5% SLOPE AND DIRECTION OF FLOW
 - RIDGE OR GRADE BREAK LINE
 - ← OVERLAND RELEASE DIRECTION
 - LIMITS OF CONSTRUCTION
 - SWALE
 - AREA OF ASPHALT CONCRETE
 - LIGHT DUTY
3" AC OVER 6" AB
SUBGRADE COMPACTED PER GEOTECH REPORT.
 - MEDIUM DUTY
3" AC OVER 9" AB OR 4" AC OVER 7" AB
SUBGRADE COMPACTED PER GEOTECH REPORT.
 - HEAVY DUTY
3" AC OVER 12" AB OR 4" AC OVER 10" AB
SUBGRADE COMPACTED PER GEOTECH REPORT.
 - AREA OF CONCRETE
 - VEHICULAR AREAS - 6" PCC OVER 10" AB WITH #3 REBAR AT 18" O.C. EACH WAY. SUBGRADE COMPACTED PER GEOTECH REPORT. (SEE SHT A1.3.3, SITE DETAILS FOR REINF AND EDGE THICKENING) (UTILITY ENCLOSURE: 8" PCC OVER 10" AB)
 - PEDESTRIAN AREAS - 4" PCC (REINF) OVER 6" AB OVER SUBGRADE COMPACTED PER GEOTECH REPORT. (SEE SHT A1.3.3, SITE DETAILS FOR REINF AND EDGE THICKENING)

- ### GENERAL NOTES
1. WHERE PLANS DO NOT INDICATE A "TC" ELEVATION, THE TC ELEVATION SHALL BE 6" ABOVE THE FINISH SURFACE ELEVATION SHOWN UNLESS INDICATED OTHERWISE.
 2. CONTRACTOR IS RESPONSIBLE FOR ENSURING THAT ALL LANDSCAPED AREAS ARE CONSTRUCTED AS SHOWN TO PROVIDE DRAINAGE AND OVERLAND RELEASE.
 3. ACCENT PAVING OR HARDSCAPE PROVIDED SHALL BE ACCESSIBLE PER CBC REQUIREMENTS. (SEE ARCHITECTURAL PLANS FOR ALL DETAILS.)
 4. PROVIDE DOWELING, CONCRETE THICKENING, AND OTHER SUCH DETAILING AT ALL INTERFACES BETWEEN WALKS/HARDSCAPE AND CURBING IN ACCORDANCE WITH THE DETAILS BY THE ARCHITECT AND/OR LANDSCAPE ARCHITECT.
 5. RETAINING WALLS NOT INCLUDED AS PART OF CIVIL IMPROVEMENT PLANS. SEE STRUCTURAL PLANS FOR RETAINING WALL DETAILS.

SEAL: REGISTERED PROFESSIONAL ENGINEER, CIVIL, STATE OF CALIFORNIA, No. 49799, Exp. 9-30-10

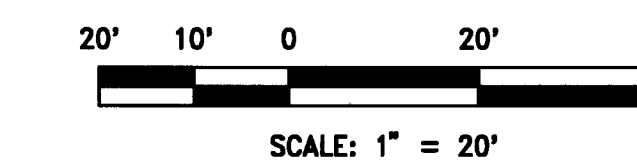
IDENTIFICATION STAMP: DIVISION OF THE STATE ARCHITECT, OFFICE OF REGULATION SERVICES, APP# 01-110885, DATE: OCT 29 2009, P/N: 60369-44, DSA FILE #43.4

PROJECT: ALUM ROCK UESD
SAN ANTONIO ELEMENTARY SCHOOL - PHASE 1

DRAWING TITLE: **GRADING PLAN**

NO.	DATE	ISSUE	DRAWN BY	PROJECT NO.
			M. MOTRONI	8416.001
			P. TOBIA	DATE: OCT 27, 2009
				DRAWING NO.

C4.1



LEGEND

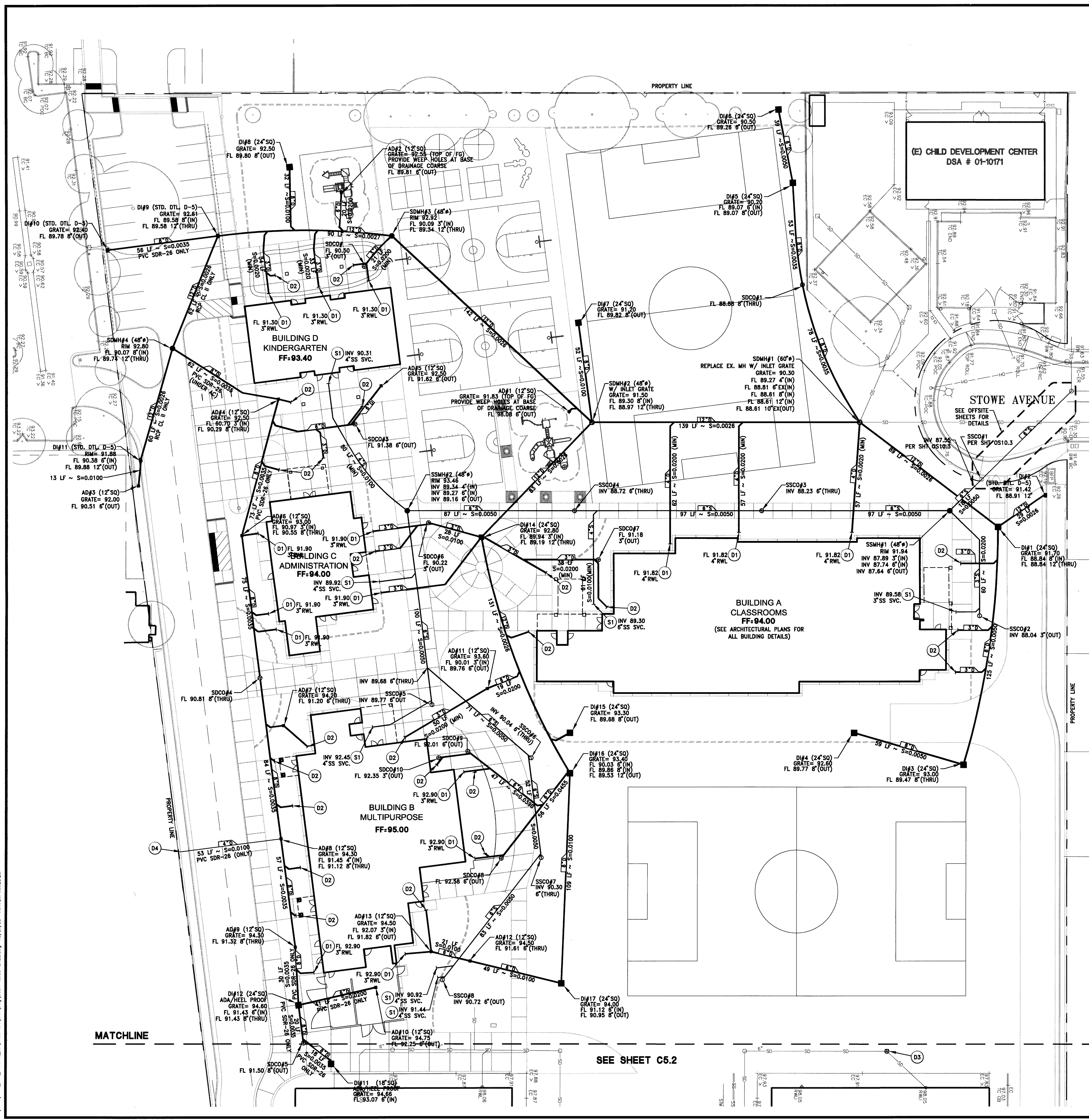
- STORM DRAIN LINE
- D1#1 (XX" SQ.) DROP INLET (SIZE) (PER SAN JOSE STD. DTL. D-6 UNLESS OTHERWISE NOTED)
- AD#1 (XX" SQ.) AREA DRAIN (SIZE) (NDS CATCH BASIN OR SIMILAR, WHERE LOCATED IN HARDSCAPE, PROVIDE HEEL PROOF AND ADA ACCESSIBLE METAL GRATE. CONTRACTOR TO CONTACT OWNER'S REPRESENTATIVE TO COORDINATE FINISH PRIOR TO ORDERING.)
- SDMH #1 STORM DRAIN MANHOLE (48") (PER SAN JOSE STD. DTL. D-11)
- SDCO #1 STORM DRAIN CLEANOUT (SEE DETAIL ON SHEET C7.0)
- SANITARY SEWER LINE
- SSMH #1 SANITARY SEWER MANHOLE (48") (PER SAN JOSE STD. DTL. D-11)
- SSCO #1 SANITARY SEWER CLEANOUT (SEE DETAIL ON SHEET C7.0)

GENERAL NOTES

1. REFER TO PLUMBING PLANS FOR CONNECTIONS TO THE BUILDING.
2. ALL BUILDING SERVICES TO BE STUBBED TO 5' FROM BUILDING OR AS SHOWN.
3. CONTRACTOR TO VERIFY LOCATION AND DEPTH OF ALL EXISTING UTILITIES PRIOR TO COMMENCEMENT OF WORK AND SHALL NOTIFY ENGINEER OF ANY DISCREPANCIES PRIOR TO CONTINUING WORK.

CONSTRUCTION NOTES

- STORM DRAIN NOTES:
- (D1) CONNECT TO BUILDING ROOF DRAIN WITH PVC DRAIN PIPE. SLOPE AT 0.0200 (MIN), UNLESS OTHERWISE SHOWN.
 - (D2) CONNECT TO BUILDING DOWN SPOUT WITH 3" PVC DRAIN PIPE. SLOPE AT 0.0200 (MIN), UNLESS OTHERWISE SHOWN.
 - (D3) REPLACE EXISTING DRAIN INLET WITH DRAIN CLEANOUT.
 - (D4) CONNECT TO RETAINING WALL DRAIN WITH PVC DRAIN PIPE (SDR-26).
- SANITARY SEWER NOTES:
- (S1) INSTALL PVC PIPE AT S=0.0200 (MIN), UNLESS OTHERWISE SHOWN TO CONNECT TO BUILDING SEWER SERVICE. SIZE AS SHOWN.



MATCHLINE

SEE SHEET C5.2

AGENCY REVIEW

IDENTIFICATION STAMP
DIVISION OF THE STATE ARCHITECT
OFFICE OF REGULATION SERVICES

APPL# 01-110885

AC TS FAB SS

DATE: OCT 29 2009

PTN: 6509944
DSA FILE #43-4

10-24-09

PROJECT: ALUM ROCK USED
SAN ANTONIO ELEMENTARY SCHOOL - PHASE 1

DRAWING TITLE: **STORM DRAIN & SANITARY SEWER PLAN**

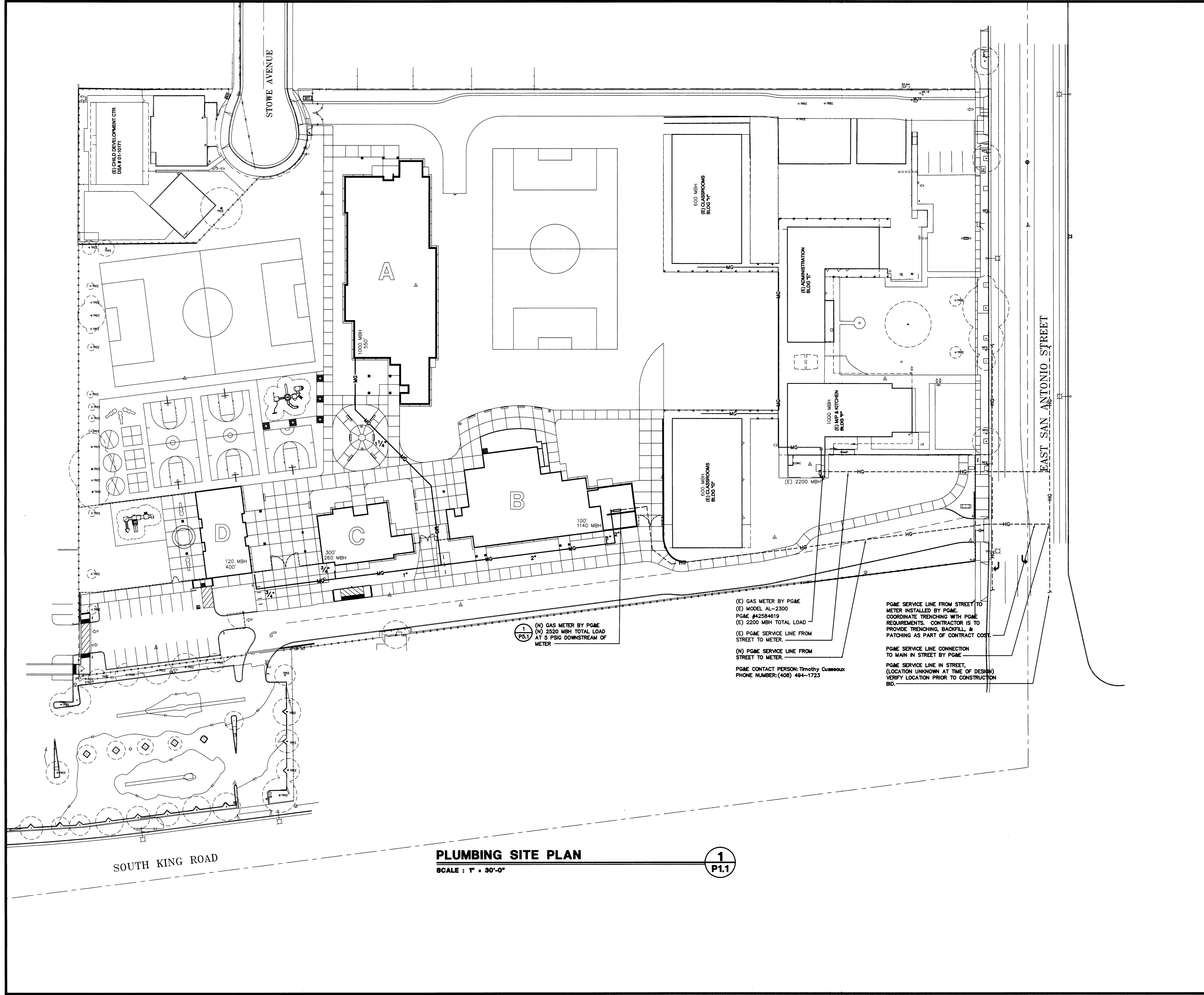
NO.	DATE	ISSUE	DRAWN BY	PROJECT NO.
			M. MOTRONI	8416.001
			CHECKED BY	
			P. TOBIA	OCT 27, 2009
			DRAWING NO.	

C5.1

QC
IN | X

200 Auburn Folsom Road
Auburn, California 95603
530/888 0999
www.ntd.com

San Diego • Los Angeles • Auburn • Visalia • Salinas • Phoenix • Tucson
KEYNOTES



PLUMBING SITE PLAN
SCALE : 1" = 30'-0"

1
P1.1

(E) GAS METER BY PG&E
(E) MODEL AL-2300
PG&E #42584619
(E) 2200 MBH TOTAL LOAD
(E) PG&E SERVICE LINE FROM STREET TO METER.

(N) GAS METER BY PG&E
(N) 2520 MBH TOTAL LOAD
AT 5 PSIG DOWNSTREAM OF METER

(N) PG&E SERVICE LINE FROM STREET TO METER.

PG&E CONTACT PERSON: Timothy Cusack
PHONE NUMBER: (408) 494-1723

PG&E SERVICE LINE FROM STREET TO METER INSTALLED BY PG&E. COORDINATE TRENCHING WITH PG&E REQUIREMENTS. CONTRACTOR IS TO PROVIDE TRENCHING, BACKFILL, & PATCHING AS PART OF CONTRACT COST.

PG&E SERVICE LINE CONNECTION TO MAIN IN STREET BY PG&E.

PG&E SERVICE LINE IN STREET, (LOCATION UNKNOWN AT TIME OF DESIGN) VERIFY LOCATION PRIOR TO CONSTRUCTION BID.

DATE SIGNED: 10/29/08

SEAL: [Professional Engineer Seal]

AGENCY REVIEW: [Agency Review Stamp]

IDENTIFICATION STAMP: DIVISION OF THE STATE ARCHITECT OFFICE OF REGULATION SERVICES

APPL #01-110885

AC: F/LS [Signature] SS [Signature]

DATE: OCT 29 2008

PTN: 60359-44
DSA FILE #43-4

PROJECT: ALUM ROCK UESD
SAN ANTONIO ELEMENTARY SCHOOL - PHASE 1

DRAWING TITLE: BUILDING A - CLASSROOMS
PLUMBING SITE PLAN

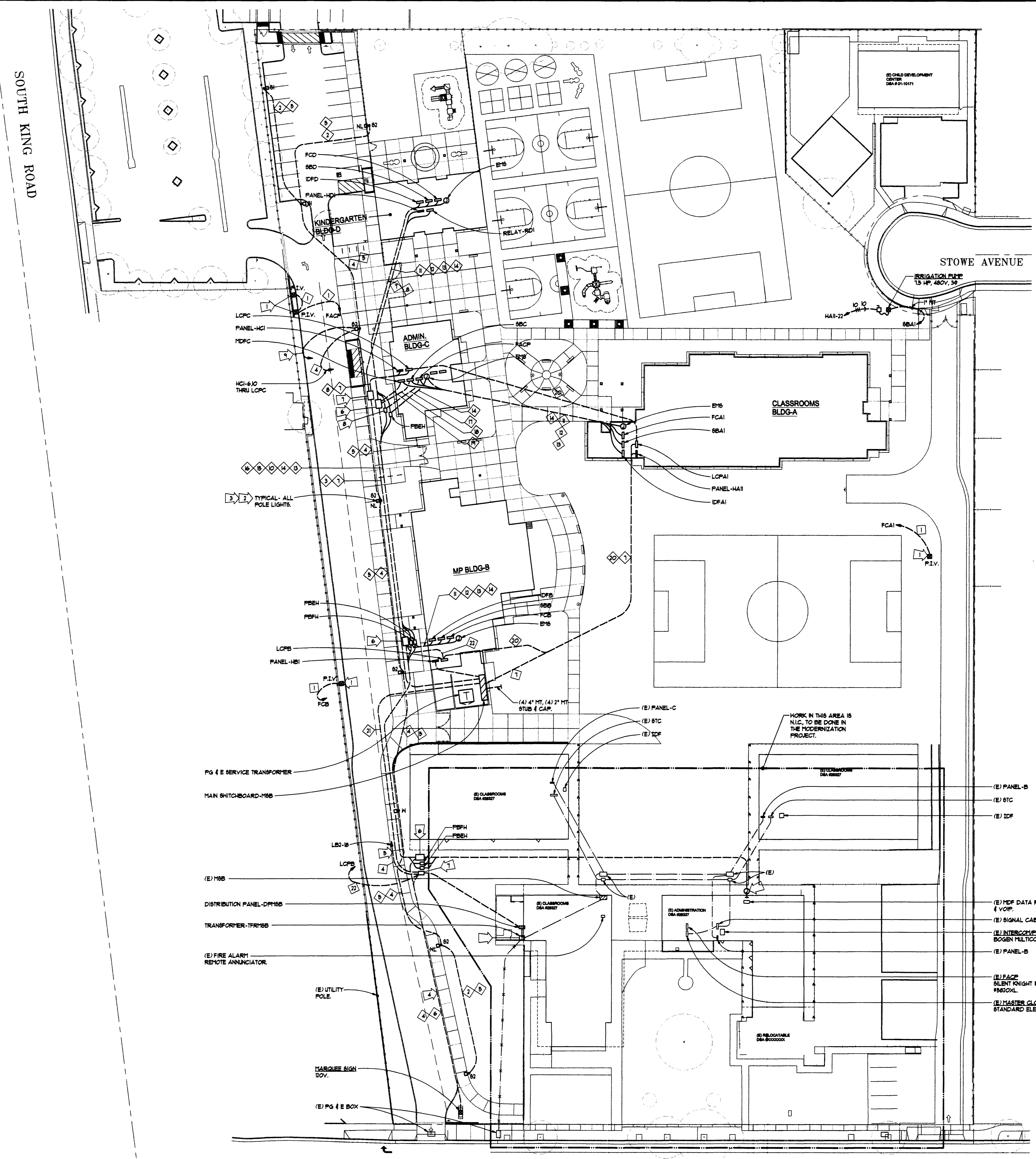
NO.	DATE	ISSUE	DRAWN BY	PROJECT NO.
				2008-0028-00
		CHECKED BY		DATE
				10/27/09
		DRAWING NO.		
				P1.1

CONSTRUCTION NOTES:

- 1 PROVIDE FIRE ALARM CONNECTION TO POST INDICATOR VALVE & TAMPER SWITCH.
- 2 PROVIDE ELECTRICAL PULLBOX-PBCH AND SIGNAL PULLBOX-PBSH (SIGNAL) ADJACENT EACH POLE LIGHT BASE, U.O.N. REFER TO DETAILS ON SHEET 574.
- 3 PROVIDE PROVISIONS ON POLE FOR FUTURE CAMERAS, SEE DETAIL-A/AREA.
- 4 ROUTE DATA BACK TO IDPB IN HP BUILDING-B.
- 5 ROUTE ONE HOT THRU LCPB & THE OTHER HOT DIRECTLY FROM BREAKER.
- 6 PULLBOX-PBCH (SIGNAL, COMMUNICATION) 40" x 60" x 48".
- 7 PULLBOX-PBCH (ELECTRIC), 30" x 48" x 24".
- 8 PULLBOX-PBSH (FIRE ALARM), 24" x 36" x 22".
- 9 1" MT TO 68C & 1" MT TO PANEL-LCL.

CIRCUIT NOTES:

- 1 1" MTC (FA)
- 2 1-2#8 & #10 (GND)
- 3 (1) 4" MT.
- 4 1/4" - 4#8 #10 (GND)
- 5 (2) 1" MT (CAMERA SIGNAL & POWER)
- 6 3/4" - (1) DB
- 7 POWER FEEDERS
- 8 1-#10 & #10 (GND), (LIGHTING RELAY CONTROL)
- 9 (2) 4" MT (DATA), (2) 4" MT (SIGNAL)
- 10 (1) 4" MT (DATA), (1) 4" MT (SIGNAL)
- 11 (1) 4" MTC (DATA), (1) 4" MT
- 12 (1) 4" MTC (SIGNAL) & (1) 4" MT
- 13 (1) 2" MTC (FIRE ALARM)
- 14 (1) 2" MT (EPB)
- 15 (1) 4" MTC (DATA)
- 16 (2) 4" MTC (SIGNAL)
- 17 (1) 2" MTC (FA), & (1) 2" MT
- 18 (2) 4" MTC & (2) 4" MT (SIGNAL)
- 19 (1) 4" MTC & (2) 4" MT (DATA)
- 20 1" MTC (LCP).
- 21 (3) 4" MT.
- 22 (1) 1" MT.



A ELECTRICAL SITE PLAN
E12 SCALE: 1" = 30'-0"

CONSULTANT
HARRY A. YEE & ASSOCIATES, INC.
ELECTRICAL ENGINEERS
4820 FREEDOM BLVD., SUITE D
SACRAMENTO, CALIFORNIA 95822
TEL: 916.454.3319
FAX: 916.454.4117
HYA JOB #0919

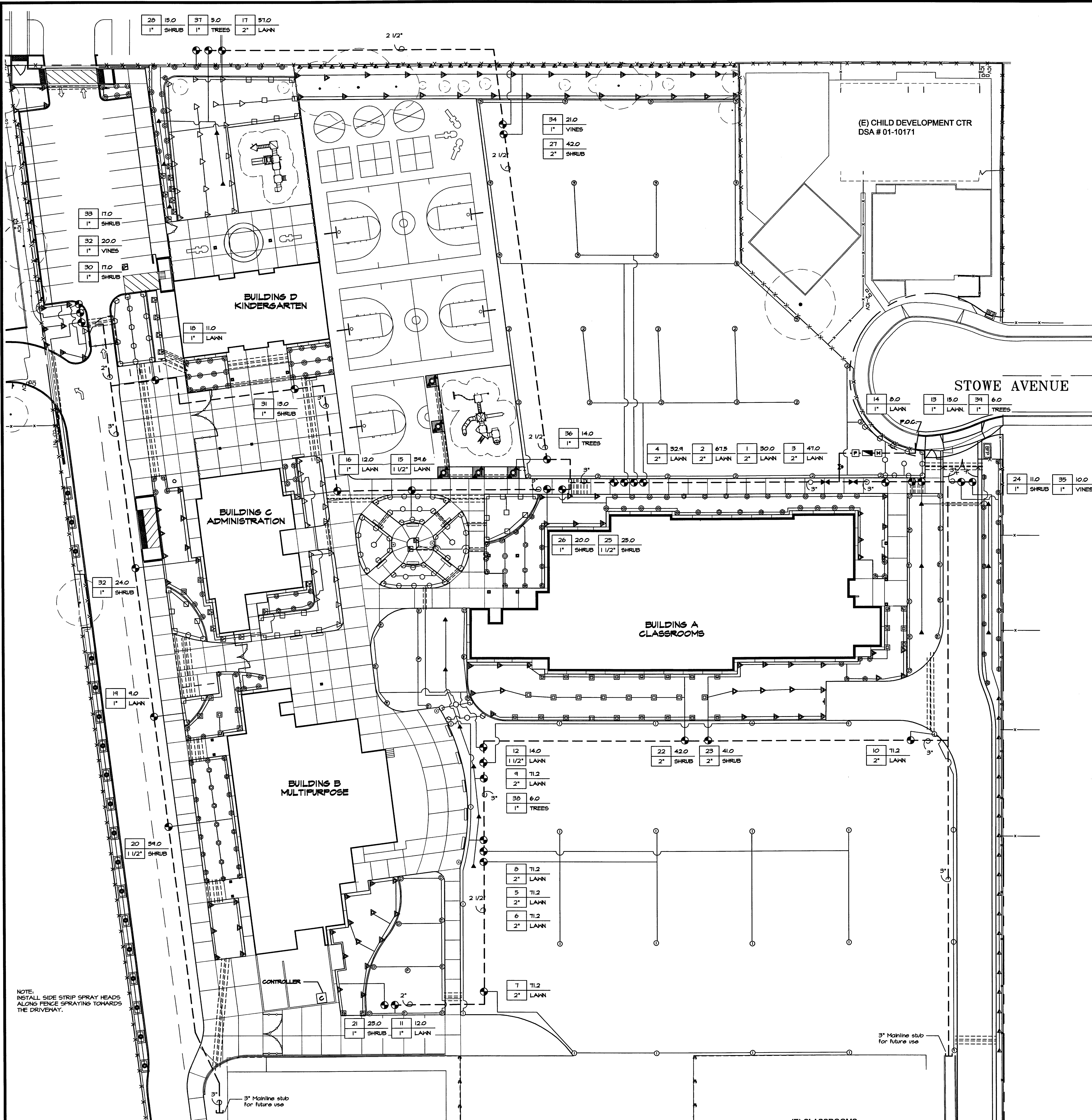
AGENCY REVIEW
IDENTIFICATION STAMP
DIVISION OF THE STATE ARCHITECT
OFFICE OF REGULATION SERVICES
APPL # 01-110885
AC - FILED ON 88 CW
DATE: OCT 29 2009
PTN: 88369-44
DSA FILE #43-4

PROJECT: ALUM ROCK UESD
SAN ANTONIO ELEMENTARY SCHOOL - PHASE 1

DRAWING TITLE: **ELECTRICAL SITE PLAN**

NO.	DATE	ISSUE	DRAWN BY	PROJECT NO.
			HW/DB	2009-0228-00
			CHECKED BY	DATE
			TY	10/29/09
			DRAWING NO.	

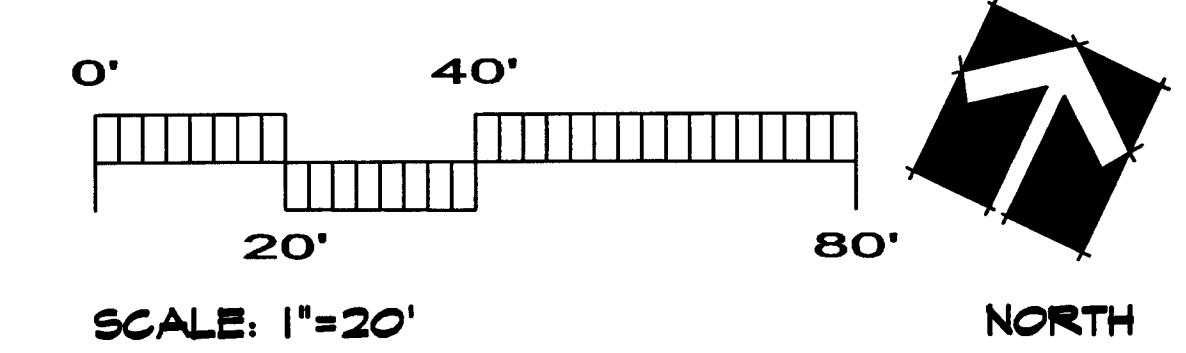
E1.2



IRRIGATION LEGEND

- Key**
- Point of Connection**
 - P.O.C.** 3" water service stub down stream of BFP. Verify location.
 - Meter** 3" Water meter provided by Civil. Verify location.
 - Backflow Prevention Device** 3" RP backflow preventer provided by Civil - Verify location.
 - Master Valve & Flow Sensor** Toro TFS-200 2" Flow Sensor Superior Controls Master Valve - Model 3100 3" Normally Open, Electric.
 - Edge Electric Shielded Control Cable** 180245TH - 16 AWG.
 - Booster Pump** Booster Pump assembly provided by Watertronics Contact Phil Vangene (425)250-5885 for all specifications and requirements. Field verify Booster Pump location. Refer to sheet L3.3 for further information.
 - Gate Valve** NIBCO T113 Bronze - 2 1/2" and smaller. NIBCO T614 - 3" and larger. Install below grade in valve box.
 - Remote Control Valve** Toro F220-21 Series Set pressure to 40 PSI for all pop-up spray head and bubbler stations. Install below grade in valve box.
 - Valve ID Box**
- TURF/SHRUB**
- STATION**
- 6PM**
- A-1 21.0**
- 1 1/2" SHRUB**
- ZONE TYPE**
- VALVE SIZE**
- | Q H F | 6" Lawn Pop-up Spray Heads | Precip. Rate | Radius | PSI |
|--|-----------------------------|---------------|---------|-----|
| □ □ □ | Toro 510Z-6P PRX 5PC | 1.70 in / hr. | 5' | 30 |
| □ □ □ | Toro 510Z-6P PRX 8PC | 1.75 in / hr. | 8' | 30 |
| □ □ □ | Toro 510Z-6P PRX 10PC | 1.54 in / hr. | 10' | 30 |
| □ □ □ | Toro 510Z-6P PRX 12PC | 1.64 in / hr. | 12' | 30 |
| □ □ □ | Toro 510Z-6P PRX 15PC | 1.66 in / hr. | 15' | 30 |
| Q H F | 2" Shrub Pop-up Spray Heads | Precip. Rate | Radius | PSI |
| □ □ □ | Toro 510Z-12P PRX 5PC | 1.70 in / hr. | 5' | 30 |
| □ □ □ | Toro 510Z-12P PRX 8PC | 1.75 in / hr. | 8' | 30 |
| □ □ □ | Toro 510Z-12P PRX 10PC | 1.54 in / hr. | 10' | 30 |
| □ □ □ | Toro 510Z-12P PRX 12PC | 1.64 in / hr. | 12' | 30 |
| □ □ □ | Toro 510Z-12P PRX 15PC | 1.66 in / hr. | 15' | 30 |
| □ □ □ | Toro 510Z-12P PRX 145ST | 1.44 in / hr. | 4x30' | 30 |
| - USE TVAN VARIABLE ARC NOZZLES WHERE APPLICABLE TO MINIMIZE IRRIGATION OVERSPRAY ONTO PAVED SURFACES. | | | | |
| Q H F | 6" Rotor Pop-up Rotor Heads | Precip. Rate | Radius | PSI |
| □ □ □ | Hunter I-35-06-XX-21 | 1.03 in / hr. | 62' | 60 |
| □ □ □ | Hunter I-25-06-XX-4 | 0.51 in / hr. | 42' | 60 |
| □ □ □ | Hunter I-25-06-XX-7 | 0.63 in / hr. | 48' | 50 |
| □ □ □ | Hunter I-20-6P-ADS-159R-G | 0.23 in / hr. | 18'-25' | 50 |
| □ □ □ | Hunter I-20-6P-ADS-159R-H | 0.46 in / hr. | 18'-25' | 50 |
| □ □ □ | Hunter I-20-6P-ADS-308R-F | 0.92 in / hr. | 18'-25' | 50 |
- Pressure-Compensating Flood Bubbles**
- Rain Bird RFB-B-C-1404
 - Toro FB50-PC on 510Z 6P-PRX-COM
- Water Main Line**
- CL 315 mainline (size as noted on plan).
- Lateral Line**
- SCH 40 PVC. Size per Pipe Sizing Schedule on Sheet L3.2
- Sleeves**
- SCH 40 PVC. Size per Sleeving Schedule on Sheet L3.2
- Automatic Controller**
- Toro 55AK-48-1452-6-N-S-1
 - Sentinel Satellite 48 Station Stainless Steel
 - Hall mount enclosure, Narrow-band Radio communication Controller, Standard surge
- Note:**
- Irrigation design is based on a maximum demand of 71 GPM. Because the main line has an air gap separation and storage tank as required by San Jose Water, a booster pump will be installed with a 85 psi boost. Operating pressure on the discharge side of the booster pump of 85 PSI is required. Landscape Contractor shall test and verify pressure and notify Landscape Architect immediately if water and pressure flows do not meet these minimum requirements.
- Irrigation plan is diagrammatic. Install valves and irrigation lines in planters whenever possible.
- All sleeves and irrigation pipes are to conform to NFPA 24, Section 10.4 - Depth of Cover (at Fire Dept. routes of access). All of the sleeves and top-of-pipes are required to be 3-feet below finish grade.

NOTE: INSTALL SIDE STRIP SPRAY HEADS ALONG FENCE SPRAYING TOWARDS THE DRIVEWAY.



YAMASAKI
LANDSCAPE ARCHITECTURE
1223 HIGH STREET, AUBURN, CA 95603
(530) 885-0040
FAX (530) 885-0042

SEAL

AGENCY REVIEW

IDENTIFICATION STAMP
DIVISION OF THE STATE ARCHITECT
OFFICE OF REGULATION SERVICES

APPL# 01-110885

AC T.E. P.A.S. S.S. C.W.

DATE: OCT 29 2009

PTN: 69366-44
DSA FILE #43-4

PROJECT: ALUM ROCK UESD
SAN ANTONIO ELEMENTARY SCHOOL - PHASE 1

IRRIGATION PLAN

NO.	DATE	ISSUE	DRAWN BY	PROJECT NO.
			SNF	2009-0028-00
			CHECKED BY	DATE
			JMA	OCT 27, 2009
			DRAWING NO.	

L2.1