

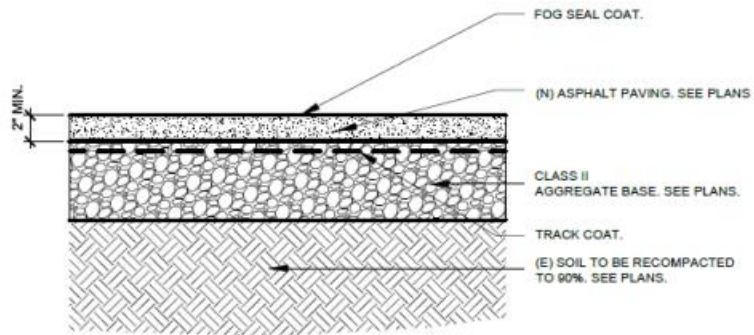
William Sheppard Middle School Asphalt Repair and Replacement
480 Rough and Ready Rd.

SCOPE OF WORK

TASK 1 CENTRAL COURTYARD -APPROXIMATELY 18,000 SQ. FT

Remove and replace asphalt. There is limited equipment access into the courtyard- allowance for access means and methods to be included in bid. Repair and patch asphalt around new shade structure columns (8 minimum) after installation. Remobilization required. Repaint courtyard designs in kind.

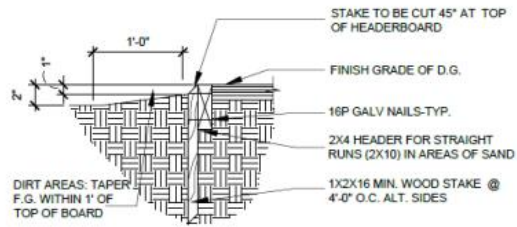
Details



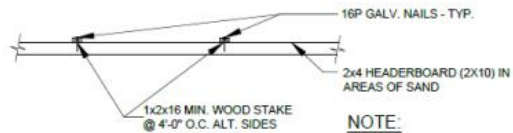
NOTE:

1. INSTALL REDWOOD HEADER BOARD AT PERIMETER OF ASPHALT PAVING WHERE ASPHALT DOES NOT ABUT A HARD SURFACE. REFER TO HEADER BOARD @ ASPHALT PAVING DETAIL 3/-.

1 ASPHALT PAVING N.T.S



SECTION

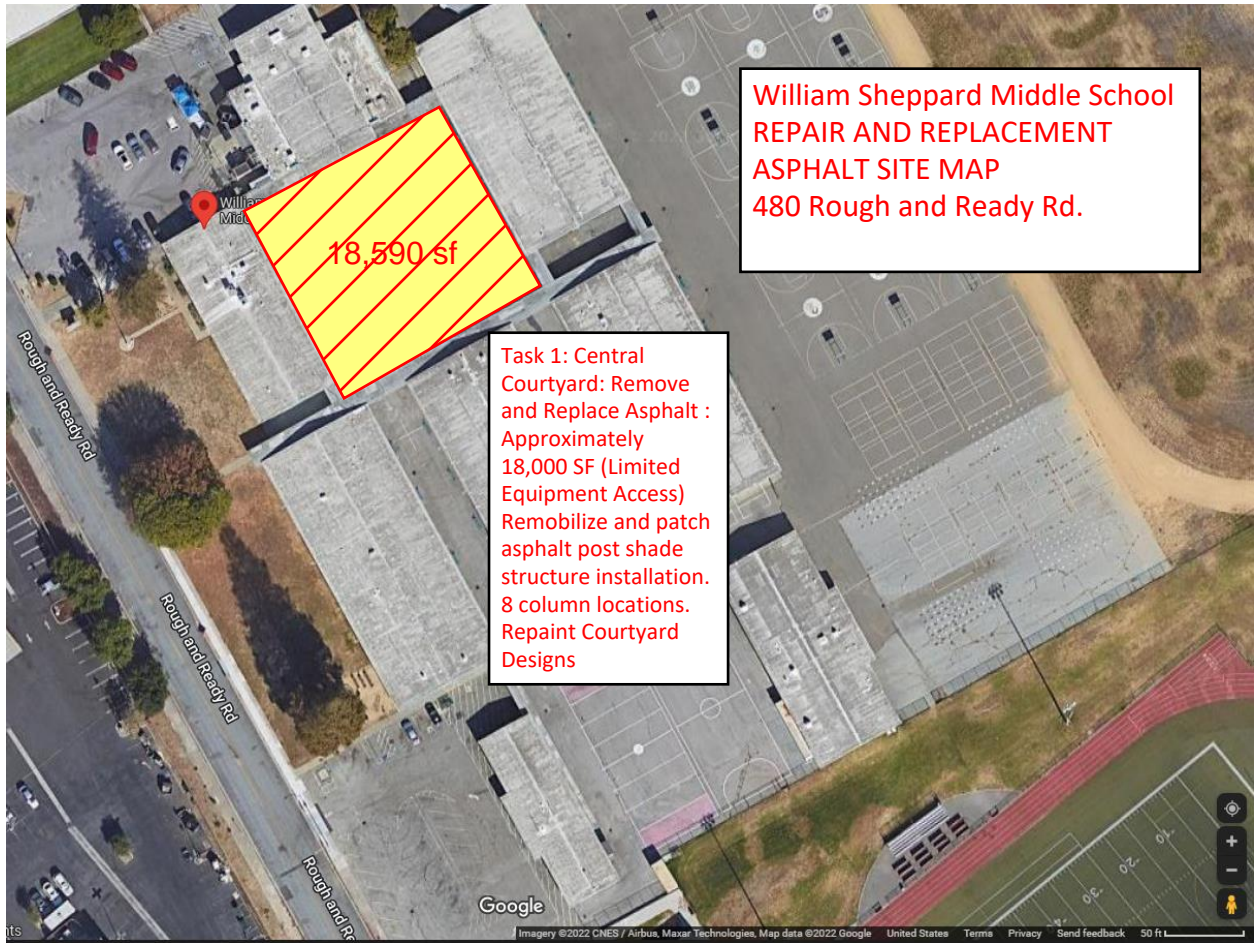


PLAN VIEW

NOTE:

1. ALL WOOD TO BE ROUGH SAWN PRESSURE TREATED DOUGLAS FIR.

2 WOOD HEADERBOARD N.T.S



William Sheppard Middle School
REPAIR AND REPLACEMENT
ASPHALT SITE MAP
480 Rough and Ready Rd.


Task 1: Central
Courtyard: Remove
and Replace Asphalt :
Approximately
18,000 SF (Limited
Equipment Access)
Remobilize and patch
asphalt post shade
structure installation.
8 column locations.
Repaint Courtyard
Designs



Structure Pricing

SHEPPARD

DSA401J303012-16 Joined Hip 30'x60' Max 12'e Max

UNIT IMAGE	UNIT DETAILS			
	Unit Quantity	1	Foundations By	USA Shade
	Unit Type:	Hip Joined	Grout Installation	Not Applicable
	Structure Size	30'x60' Max	Footing Type	Drilled Pier
	USA Shade Model Number	DSA401J303012-16	Base Attachment:	PIH - Embed
	Entry Height:	12'	Anchor Bolts:	N/A
	No of Columns:	6	Concrete Cutting:	Included
	No of Fabric Tops:	2	Dirt Removal:	Included
	Fabric Type:	Colourshade_FR	Surface Type:	Asphalt/Concrete
	Fabric Color:	TBD	NOTES	
	Steel Finish:	Coastal Primer w/ Powder Coating	Pricing based on two DSA401303012-16 units from Fullerton contract.	
Steel Color:	TBD			
Electrical Provisions:	N/A			
Cable/HDW Finish:	Galvanized			
Concept No:				
PRICE				
See below				

