



2017 BOND PROJECTS – BOARD UPDATE

Landrum MS Replacement

Spring Branch Independent School District

Stantec Project No. 214000653

June 30, 2021

1) PROJECT TEAM:

Owner:	Spring Branch ISD	Assoc. Supt. For Operations:	Travis Stanford
SBISD Project No.	67213	Project Manager:	Kris Drosche
Architect:	Stantec Architecture, Inc.	Partner-in-Charge:	Jennifer Henrikson
		Project Manager:	Gary Dunn
CM@Risk:	Durotech		

2) GENERAL SCOPE OF WORK:

Replacement of Landrum Middle School with new 1100 student campus on existing site. Scope includes demolition of existing campus, added drainage detention, construction of new building and associated site work.

Off-Site Transition:

Conceptual studies have revealed on site transition is feasible.

3) BOND PLAN PROJECT TIMELINE:

PROJECT ADVISORY TEAM	JANUARY 2019 – NOVEMBER 2019
CM@R SELECTION	MARCH 2019
CONCEPTUAL SITE STUDY	AUGUST 2018 – DECEMBER 2018
SCHEMATIC DESIGN	JANUARY 2019 – MARCH 2019
DESIGN DEVELOPMENT	MARCH 2019 – MAY 2019
CONSTRUCTION DOCUMENTS	MAY 2019 – AUGUST 2019
PERMIT RECEIVED	MARCH 30, 2020
BIDDING / BOARD APPROVAL	SEPTEMBER 2019 – NOVEMBER 2019
CONSTRUCTION PHASE	DECEMBER 2019 – OCTOBER 2021
OCCUPANCY	JUNE 2021 – AUGUST 2021

← Current Point

4) PROJECT STATUS OVERVIEW

Project is in Construction Phase.

5) PAST 2-4 WEEKS PROJECT HIGHLIGHTS / MILESTONES:

- Demolition of existing campus
- Phase II site utilities underway
- Interior Finishes continue throughout
- Furniture installation



6) NEXT 2-4 WEEKS PROJECT HIGHLIGHTS / MILESTONES:

- PHASE I SUBSTANTIAL COMPLETION
- Wall Graphics
- Complete Track and Field Event surfaces
- Complete Demolition
- Phase II utilities and paving

7) PHOTOGRAPHS:

Demolition



Front of the building revealed





Stantec

Stantec Architecture Inc.
910 Louisiana St Suite 2600, Houston TX 77002

Gymnasium Entry



Athletic Field Grass





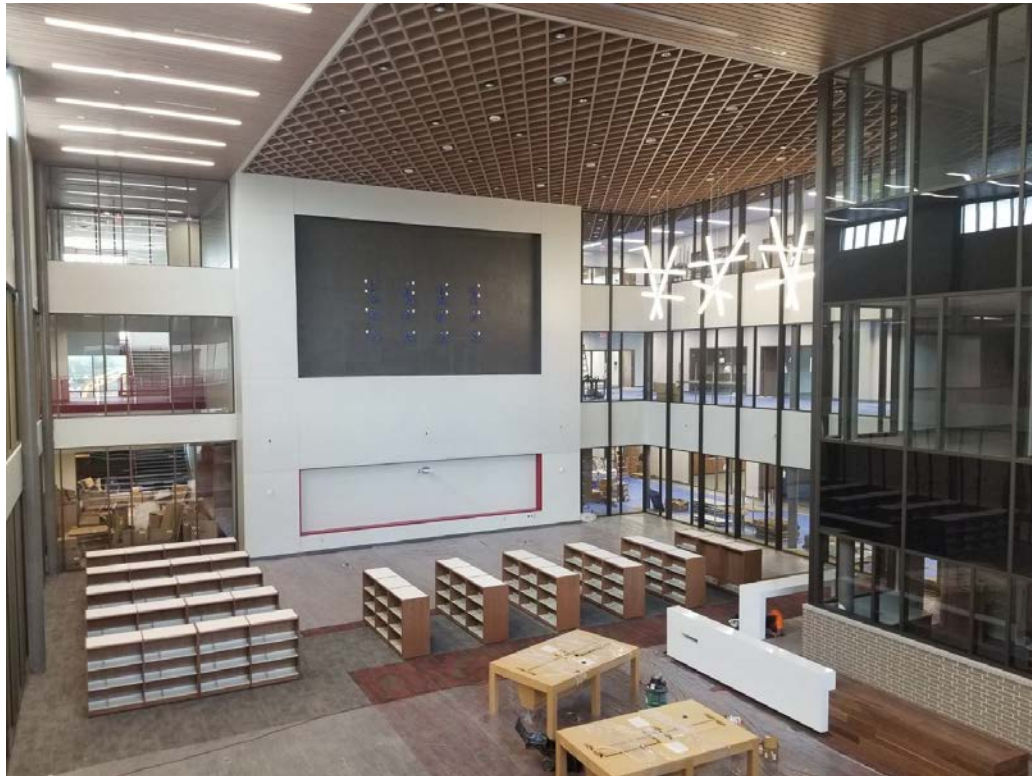
Framing final section of Entry Canopy



Shading device at Front Entry



Auditorium Interior



Library Interior



CTE Demonstration Area



Band Hall



Flex Area at Science



Classroom Furniture



Stantec

Stantec Architecture Inc.
910 Louisiana St Suite 2600, Houston TX 77002



Gymnasium Floor