



2017 BOND PROJECTS – BOARD UPDATE

Landrum MS Replacement

Spring Branch Independent School District

Stantec Project No. 214000653

March 31, 2021

1) PROJECT TEAM:

Owner:	Spring Branch ISD	Assoc. Supt. For Operations:	Travis Stanford
SBISD Project No.	67213	Project Manager:	Kris Drosche
Architect:	Stantec Architecture, Inc.	Partner-in-Charge:	Jennifer Henrikson
		Project Manager:	Gary Dunn
CM@Risk:	Durotech		

2) GENERAL SCOPE OF WORK:

Replacement of Landrum Middle School with new 1100 student campus on existing site. Scope includes demolition of existing campus, added drainage detention, construction of new building and associated site work.

Off-Site Transition:

Conceptual studies have revealed on site transition is feasible.

3) BOND PLAN PROJECT TIMELINE:

PROJECT ADVISORY TEAM	JANUARY 2019 – NOVEMBER 2019
CM@R SELECTION	MARCH 2019
CONCEPTUAL SITE STUDY	AUGUST 2018 – DECEMBER 2018
SCHEMATIC DESIGN	JANUARY 2019 – MARCH 2019
DESIGN DEVELOPMENT	MARCH 2019 – MAY 2019
CONSTRUCTION DOCUMENTS	MAY 2019 – AUGUST 2019
PERMIT RECEIVED	MARCH 30, 2020
BIDDING / BOARD APPROVAL	SEPTEMBER 2019 – NOVEMBER 2019
CONSTRUCTION PHASE	DECEMBER 2019 – OCTOBER 2021
OCCUPANCY	JUNE 2021 – AUGUST 2021

← Current Point

4) PROJECT STATUS OVERVIEW

Project is in Construction Phase.

5) PAST 2-4 WEEKS PROJECT HIGHLIGHTS / MILESTONES:

- Install of West perimeter masonry wall
- Begin forming of track and athletic field
- Interior frames and glazing installed
- Door and Hardware install underway
- Area A-C lay-in ceilings



- Carpeting in classroom and admin areas
- Continue casework installation
- Interior Lighting install underway and operational

6) NEXT 2-4 WEEKS PROJECT HIGHLIGHTS / MILESTONES:

- Complete Area A/B
- Complete Carpet and LVT flooring
- Complete ceiling installations
- Complete Interior glazing
- Complete Kitchen Equipment installation
- Complete Track
- Begin field installation
- Build Multi Sport-Court

7) PHOTOGRAPHS:

Forming of the track



Interior at Gymnasium corridor



Stantec

Stantec Architecture Inc.

910 Louisiana St Suite 2600, Houston TX 77002





Stantec

Stantec Architecture Inc.
910 Louisiana St Suite 2600, Houston TX 77002

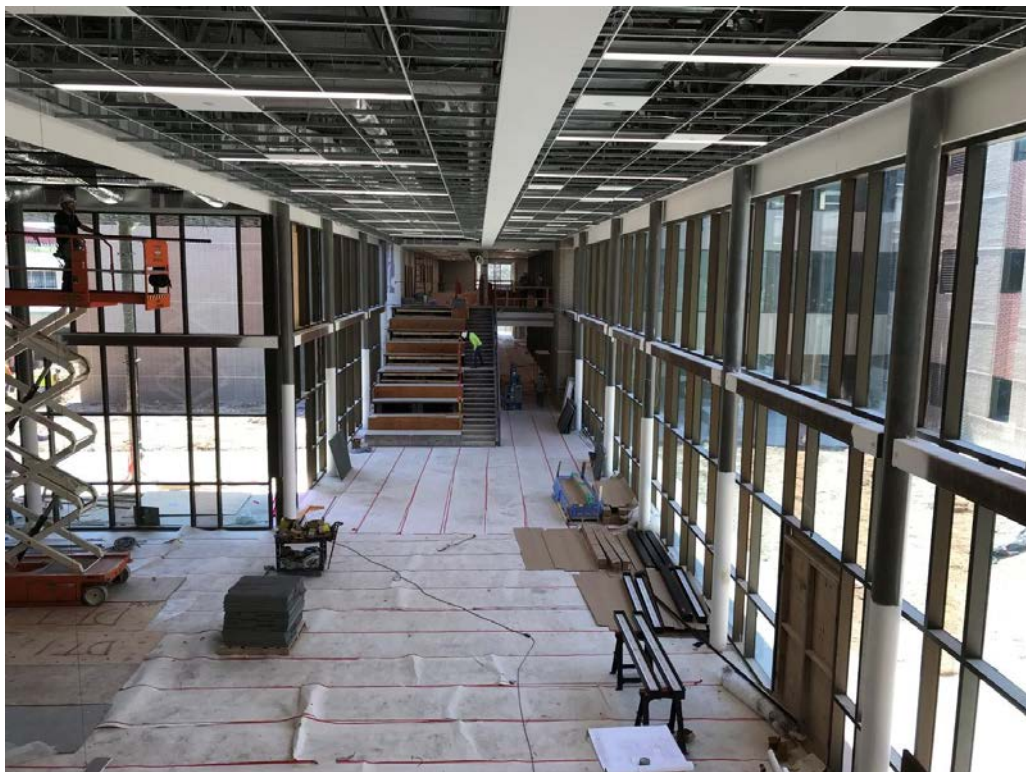
Gymnasium Interior, Basketball goals installed



Art Room Interior



View across Dining to Learning Stair



Drinking Fountains and Restroom Tiling



View down West Façade



Interior doors and frames at classroom corridor

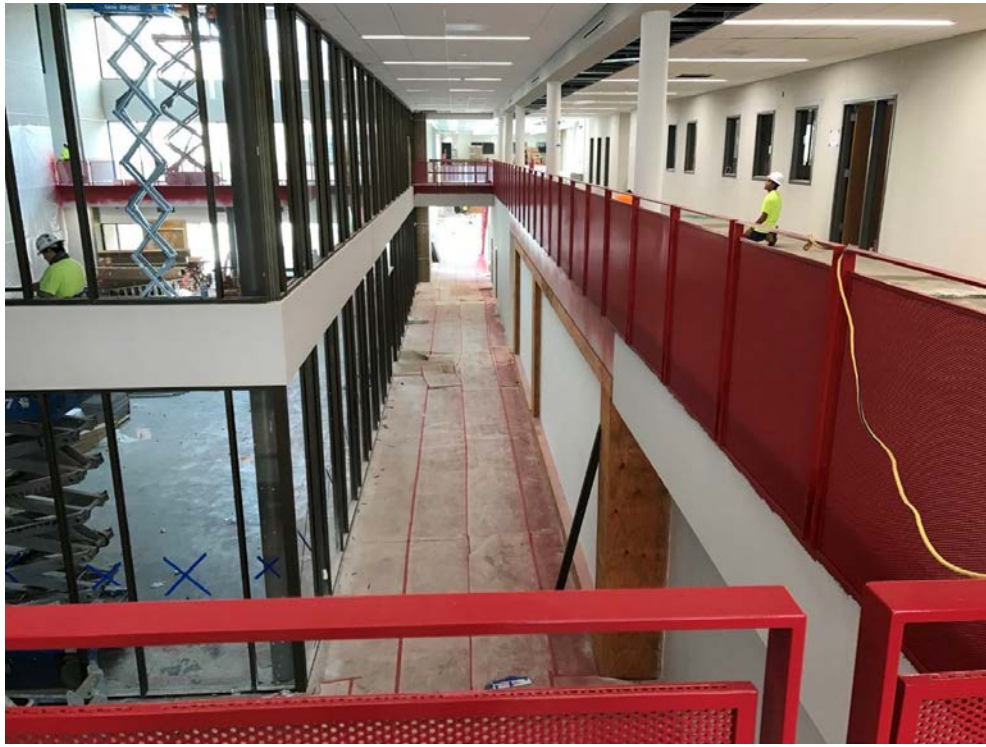


Terrazzo flooring at Auditorium Entry

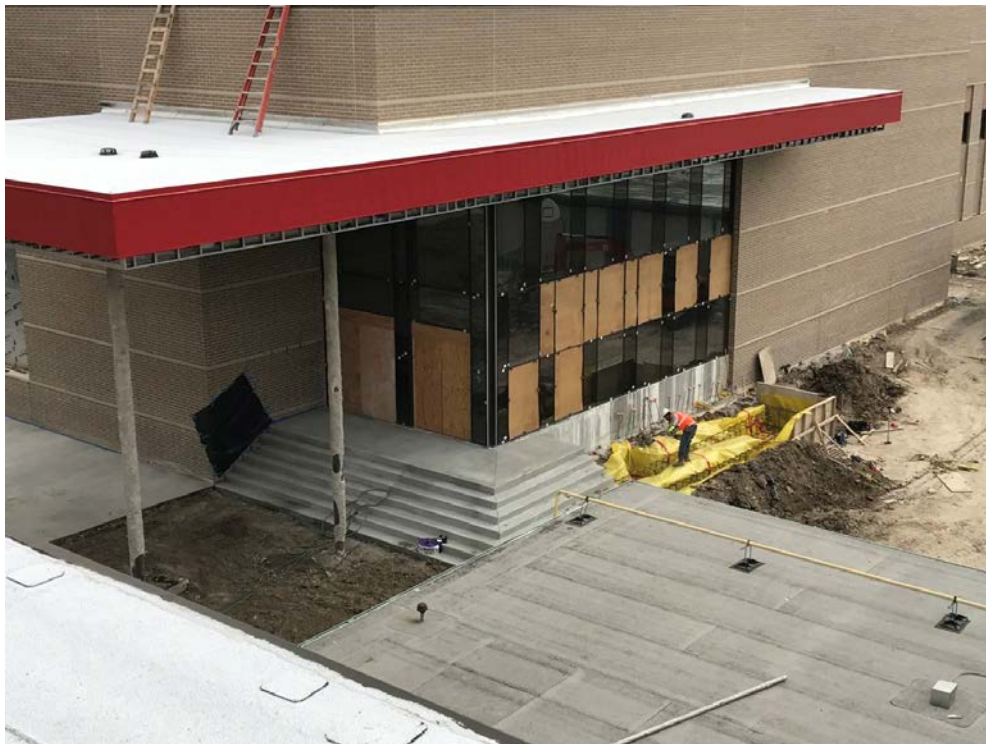




Main Corridor with Red Railing



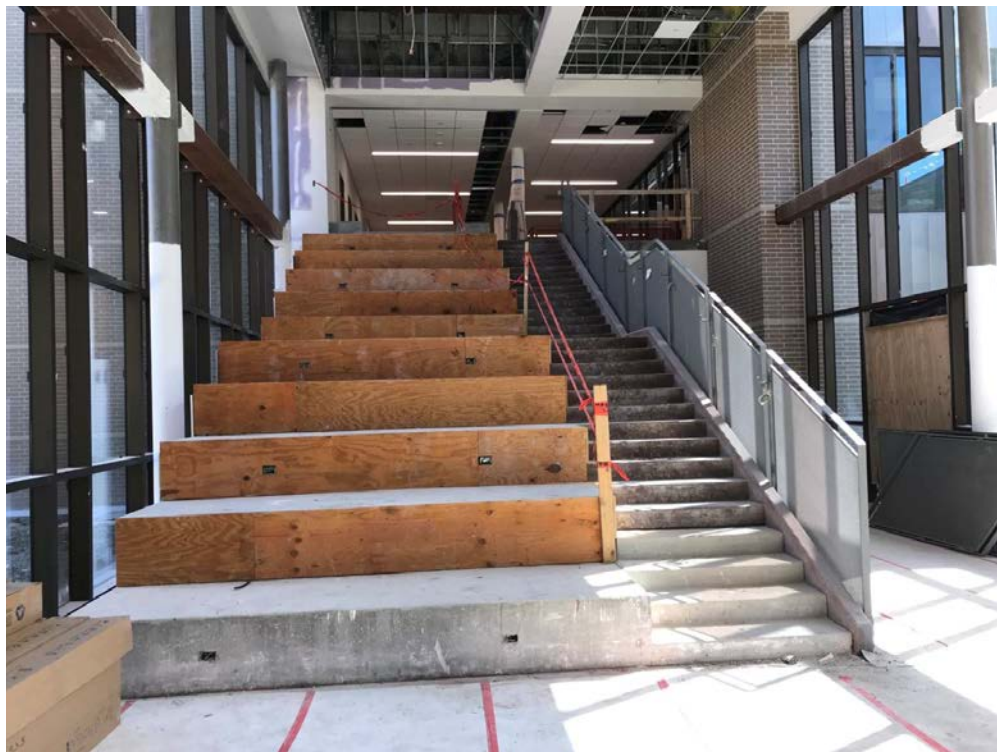
Auditorium Entry



Classroom Flex Area



Learning Stair



Auditorium Interior



Ceiling at Main Entry





Stantec

Stantec Architecture Inc.

910 Louisiana St Suite 2600, Houston TX 77002