



2017 BOND PROJECTS – BOARD UPDATE

Landrum MS Replacement

Spring Branch Independent School District

Stantec Project No. 214000653

April 30, 2021

1) PROJECT TEAM:

Owner:	Spring Branch ISD	Assoc. Supt. For Operations:	Travis Stanford
SBISD Project No.	67213	Project Manager:	Kris Drosche
Architect:	Stantec Architecture, Inc.	Partner-in-Charge:	Jennifer Henrikson
		Project Manager:	Gary Dunn
CM@Risk:	Durotech		

2) GENERAL SCOPE OF WORK:

Replacement of Landrum Middle School with new 1100 student campus on existing site. Scope includes demolition of existing campus, added drainage detention, construction of new building and associated site work.

Off-Site Transition:

Conceptual studies have revealed on site transition is feasible.

3) BOND PLAN PROJECT TIMELINE:

PROJECT ADVISORY TEAM	JANUARY 2019 – NOVEMBER 2019
CM@R SELECTION	MARCH 2019
CONCEPTUAL SITE STUDY	AUGUST 2018 – DECEMBER 2018
SCHEMATIC DESIGN	JANUARY 2019 – MARCH 2019
DESIGN DEVELOPMENT	MARCH 2019 – MAY 2019
CONSTRUCTION DOCUMENTS	MAY 2019 – AUGUST 2019
PERMIT RECEIVED	MARCH 30, 2020
BIDDING / BOARD APPROVAL	SEPTEMBER 2019 – NOVEMBER 2019
CONSTRUCTION PHASE	DECEMBER 2019 – OCTOBER 2021
OCCUPANCY	JUNE 2021 – AUGUST 2021

← Current Point

4) PROJECT STATUS OVERVIEW

Project is in Construction Phase.



5) PAST 2-4 WEEKS PROJECT HIGHLIGHTS / MILESTONES:

- Track formed and ready for surfacing
- Irrigation and forming of athletic field
- Multi Sport Court formed
- All exterior walls and glazing installed – BUILDING CLOSED IN
- Air Conditioning is operational
- Ceiling install continues throughout
- Interior Finishes continues throughout
- Interior Lighting continues throughout
- Campus Tours for Board of Trustees, Landrum family and select staff groups

6) NEXT 2-4 WEEKS PROJECT HIGHLIGHTS / MILESTONES:

- Complete Interior Finishes Area A-D
- Complete Sport Court
- Complete Track and Field Event surfaces
- Install Athletic Field Sod
- Continue finishes in Area E-F
- Final preparations for Move In and Demolition of old campus
- BEGIN PUNCH LIST WALK THRU
- Campus Tours for remaining Staff

7) PHOTOGRAPHS:



Canopy at Learning Courtyard Entry



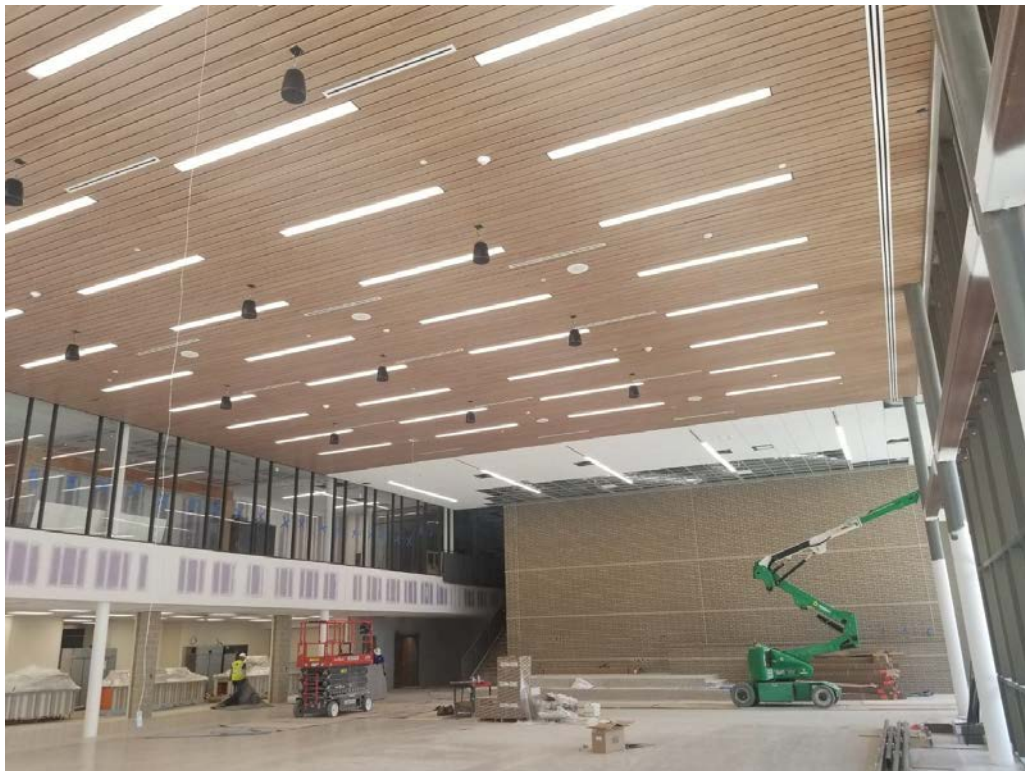
Landrum Reception Desk



Ceiling install in Library



Tile installation at Kitchen Serving Lines



Ceiling in Dining



Learning Stair



Main Corridor



Courtyard Landscaping



Auditorium Entry



Events Courtyard



Theatrical Rigging Insall at Auditorium