

Hunters Creek Elementary School

SBISD Board Winter Retreat – 12.06.19





DESIGN PROCESS

Hunters Creek Elementary School PAT Charge

The goal of the PAT is to ensure that parents, staff and community members have the opportunity to take part in the planning and design of the new school.

The PAT members will serve as communicators to and from the community during the schematic design and design development phases of the project and participate in discussions that will lead to recommendations. The PAT concludes its work once construction begins.

All recommendations must be in alignment with the District's Educational Specifications and Design and Construction Standards.



Hunters Creek Elementary School

PAT Charge (continued)

The PAT will **reach a proposed recommendation through consensus**.

Any concerns identified by the PAT members should immediately be brought to the attention of the SBISD Project Manager.

These **recommendations will be presented** by the project's architects:

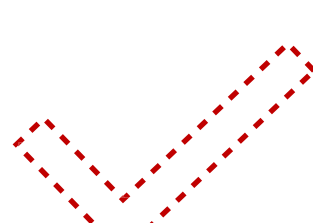
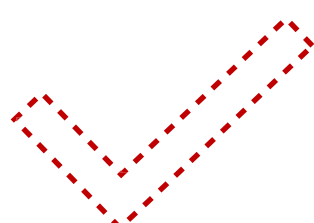
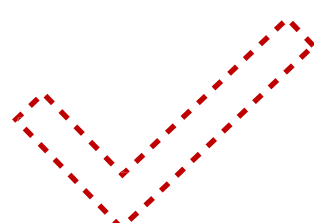
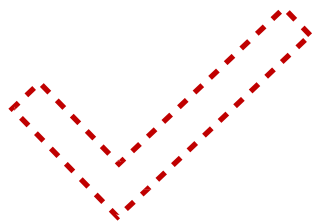
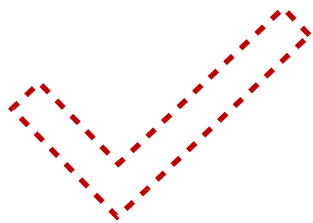
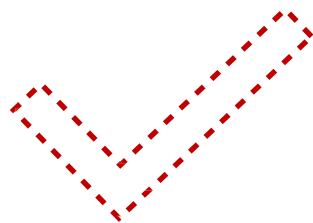
1. to the **Superintendent of Schools**, and based on approval from the Superintendent,
2. to the **Board of Trustees** for their approval.



The Board of Trustees may act upon the recommendations developed with PAT input by approving, amending, altering or not approving all or any part of the recommendations.

Hunters Creek PAT Engagement Process



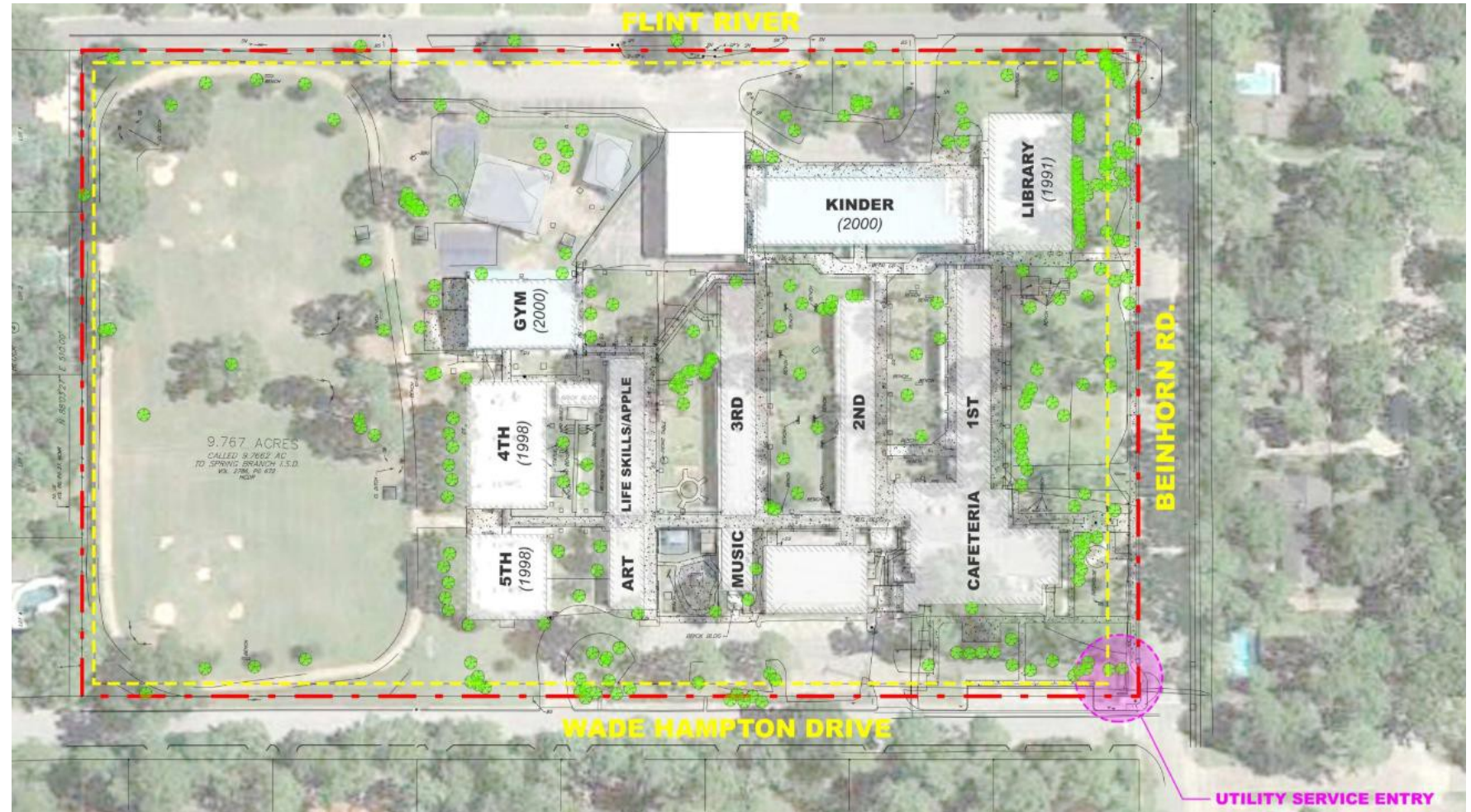


What makes HCES unique?

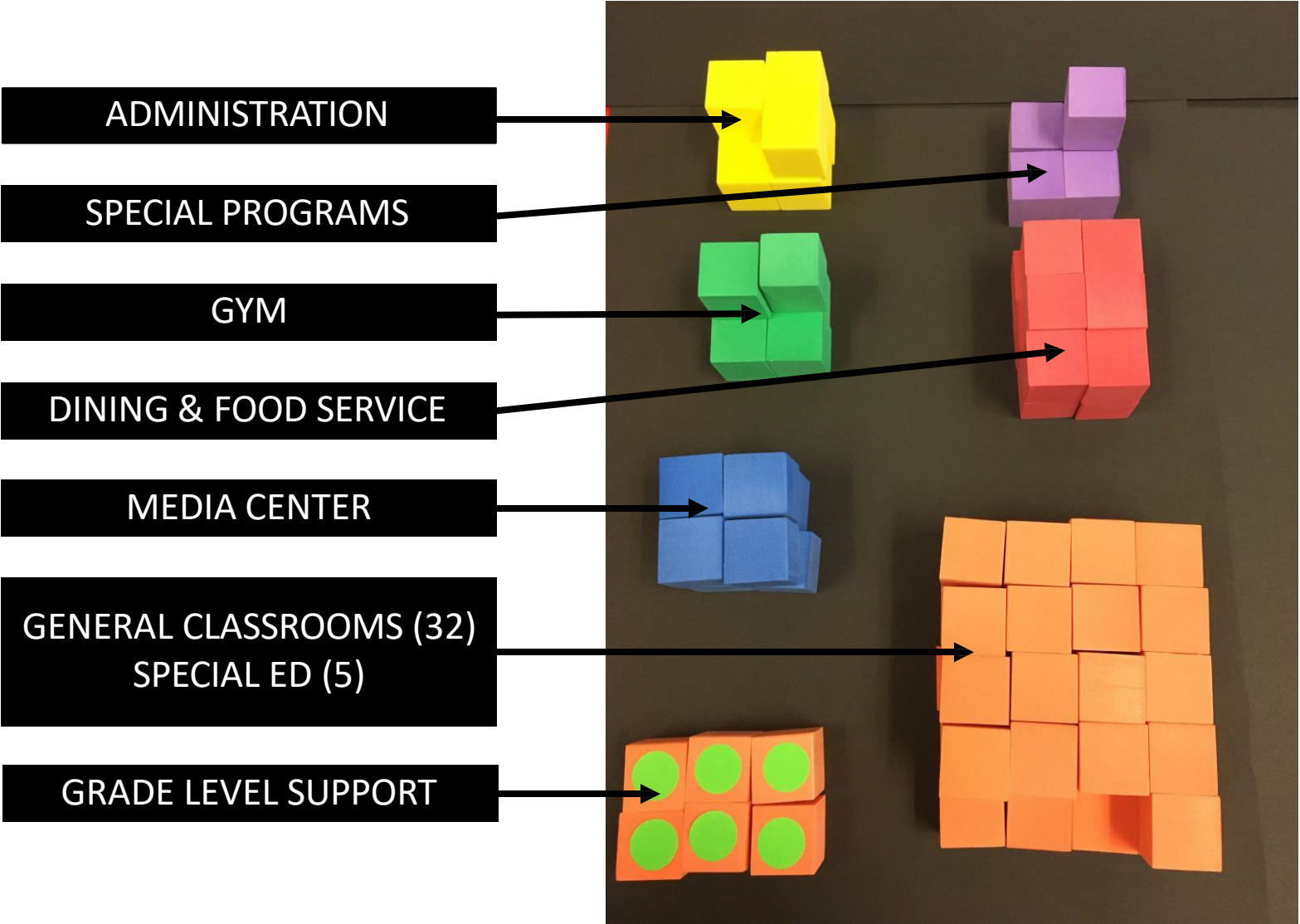
- Students/Children
- Community/Parental Involvement
- Staff/Administration
- Families
- High Expectations
- Supportive Environment
- Tough Mind Tender Heart
- Outdoors
- Culture
- Feel

EXISTING SITE CONDITIONS

- Property line setbacks (25' front, 10' sides & back)
- Height limitation (35' max)
- Parking Spaces (90 staff, 20 visitor, 5 service/delivery)
- Drop-off/Pick-up(canopy & queuing for students & bus)
- Outdoor Play (pavilion, track, fields, playgrounds)
- Service Yard (access to kitchen and central plant)
- Maintain as many existing trees as possible



PAT MEETING - THE CHARRETTE



PAT MEETING - THE CHARRETTE



FLOOR PLAN DEVELOPMENT

OPTION 1

Pros

- Courtyard
- Re-use of gym structure
- Possible afterhours use of Library

Cons

- Field/trail got smaller
- Parking far from main entrance
- South portion of site under utilized
- Classroom facing directly at drop-off areas



FLOOR PLAN DEVELOPMENT

OPTION 2

Pros

- Scale
- Centralize Library

Cons

- Most Expensive
- Small Courtyard
- Limited Exterior Views
- No all classroom have exterior windows
- Restrictive Parking



OPTION 3

Pros

- Scale
- Centralize Library

Cons

- Most Expensive
- Small Courtyard
- Limited Exterior Views
- No all classroom have exterior windows
- Restrictive Parking



OPTION 4

Pros

- Centralized Shared Areas (Library, Flex rooms, Arts & Science)
- Open Courtyard to Fields
- Kinder Playground integrated

Cons

- New Gymnasium
- Sp. Ed. detached from Admin.



OPTION 5

Pros

- Centralized Shared Areas (Library, Flex rooms, Arts & Science)
- Direct Courtyard Access
- Controlled used of Library (afterhours)
- Re-Use of Existing Gym
- Circulation through grade project areas

Cons

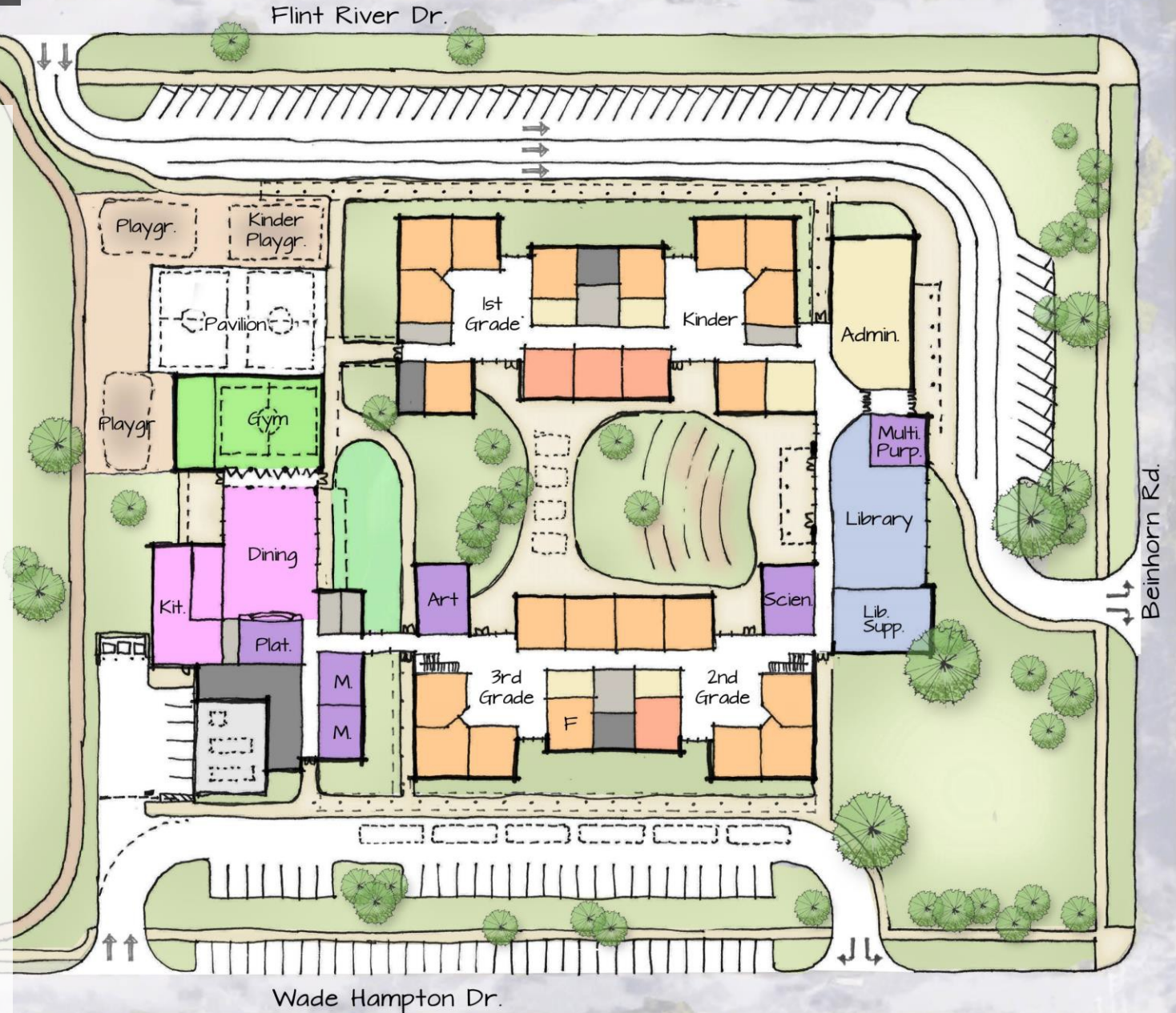
- Scale within Courtyard



OPTION 6 (Hybrid of 4 & 5)

Pros

- Scale
- Setback from street
- Parent drive discharge onto Beinhorn
- Maximize green space & preserve trees
- Provide visibility/connectivity
- Preserve existing play fields & trees
- Improve parking/circulation
- Connection from Courtyard to Play Fields
- Outdoor Dining Opportunities
- Expansion of gym during large programs/events



PAT CONSENSUS - EXTERIOR CONCEPT IMAGES



ADDITIONAL EXTERIOR CONCEPT IMAGES





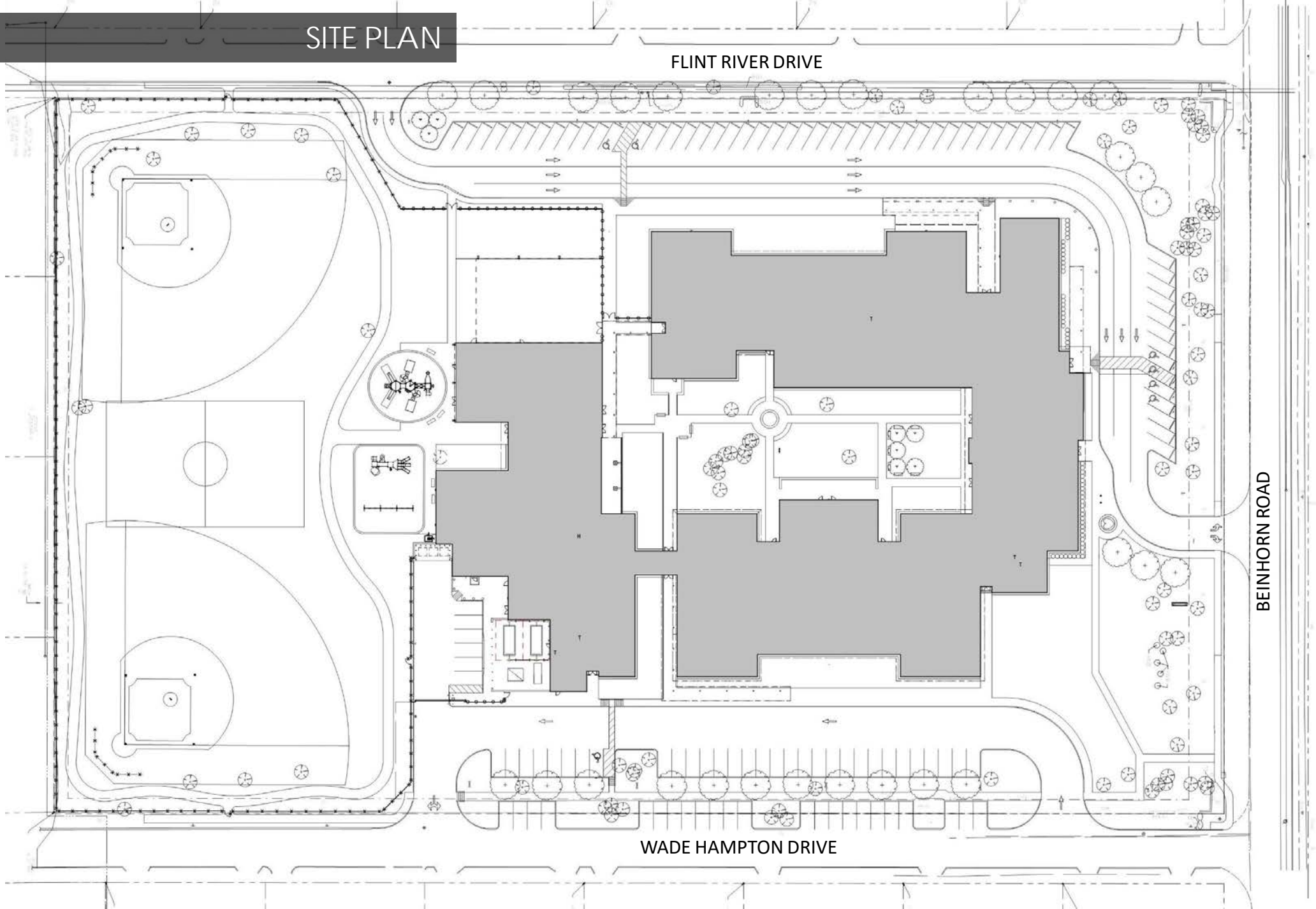
SITE PLAN

SITE PLAN

FLINT RIVER DRIVE

BEINHORN ROAD

WADE HAMPTON DRIVE





FLOOR PLANS

COMPOSITE FIRST FLOOR PLAN

Department Legend

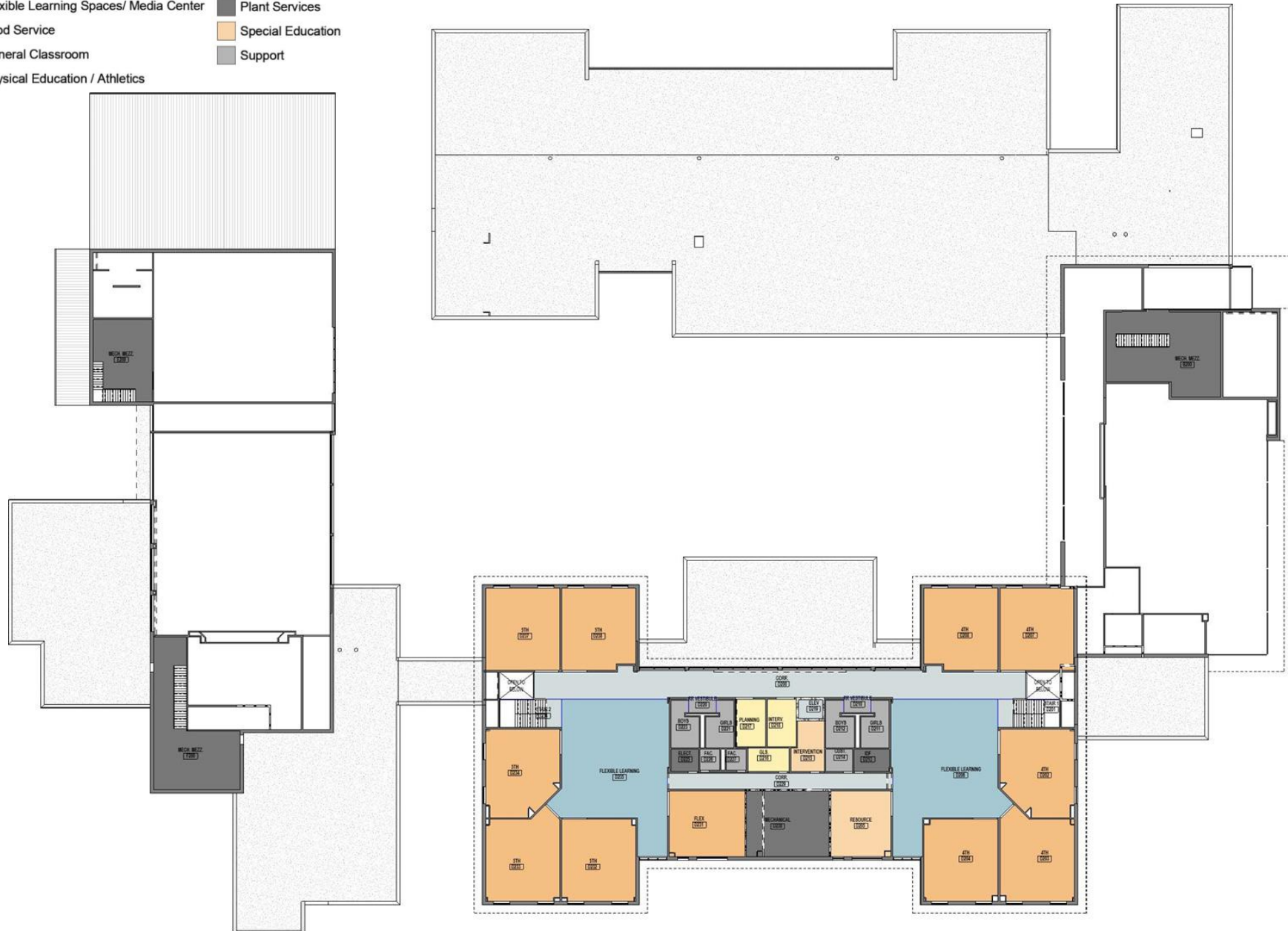
Administration	Flexible Learning Spaces/ Media Center	Plant Services
Circulation	Food Service	Special Education
Fine Arts	General Classroom	Support
	Physical Education / Athletics	



COMPOSITE SECOND FLOOR PLAN

Department Legend

- | | | |
|--|--|---|
|  Administration |  Food Service |  Special Education |
|  Circulation |  General Classroom |  Support |
|  Fine Arts |  Physical Education / Athletics | |





FRONT ENTRANCE

FRONT ENTRY: OPTION A & OPTION B



OPTION A



OPTION B

FRONT ENTRY: OPTION B SELECTED



EXTERIOR

FRONT ENTRY: OPTION B



FRONT ENTRY: OPTION B



FRONT ENTRY: OPTION B - LIBRARY



BUS DROP OFF: OPTION B



PARENT DROP OFF: OPTION B



COURTYARD

COURTYARD: PROPOSED PLAN



FACULTY PATIO

TOWN
SQUARE

OUTDOOR
DINING

ART/SCIENCE PATIO

TEACHING
THEATRE

COURTYARD: LIBRARY



COURTYARD: ART/SCIENCE PATIO



COURTYARD: CAFETERIA



COURTYARD: GATHERING SPACE





INTERIOR

PROPOSED LIBRARY ENTRANCE - PERSPECTIVE



PROPOSED LIBRARY - PERSPECTIVE



PROPOSED FLEXIBLE LEARNING - PERSPECTIVE



QUESTIONS?

THANK YOU!